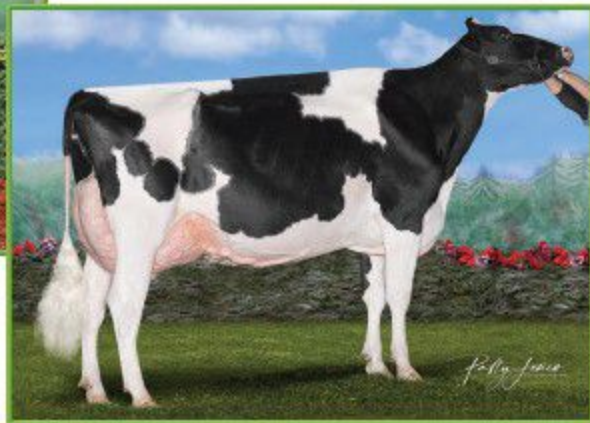


WALNUTLAWN MCCUTCHEM SUMMER-ET "EX-95 2E" 9"
 Nominated All-Canadian Mature Cow 2020
 (Dam of Catalog Number 13)



AVANT-GARDE DM SONGBIRD-ET "VG-89"
 HM All-Canadian Senior 3 Year Old 2021
 (Maternal Sister to Catalog Number 13)



STJOR JAGGER SNICKERS-ET

St. Johns River, LLC
 c/o Richard Denier
 P.O. Box 221753
 Carmel, CA 93922
 831.238.0102
 rjd.denier@gmail.com

Peak Jagger-ET

3205436591 *TR *TP *TC *TY *TV *TL *TD
 PTA +93M +52F +27P 81R 4/22
 PTA +3.76T +2.99UDC +2.19FLC 80R 4/22
 GTPI +2705

Walnutlawn McCutchen Summer-ET

CAN11120480 Excellent-95 EEEEE 2E MS:96 9*
 7-02 2x 365d 37,010 4.7 1735 3.3 1215
 1-10 2x 365d 27,002 4.6 1237 3.3 888
 3-03 2x 365d 29,643 3.6 1072 3.2 949*
 •1st Mature Cow Ontario Summer Show 2020
 •Nominated All-Canadian Mature Cow 2020
 •Norm. All-American & All-Canadian Sr. 3 Yr Old 2016
 •Res. Int. Champion Northeast Fall National 2016
 •Former #1 Type Cow in Canada
 Summer's sons:
 Walnutlawn Sidekick-ET PTAT +2.85
 Avant-Garde Unix Select-ET PTAT +3.09
 Avant-Garde-I KD Summerfest-ET PTAT +3.00
 Avant-Garde Subban-ET PTAT +2.60

840003240650405 • Born December 9, 2021
 99%RHA-I

GTPI +2405
 PTA +3.34T +2.76UDC +1.93FLC 78R 4/22
 A2/A2

Siemers Hunk-ET

3141495349 *TR *TP *TC *TY *TV *TL *TD
 PTA +128M +79F +33P 96R 4/22
 PTA +2.86T +2.59UDC +2.01FLC GTPI +2709
Cedarwal Jitters-ET
 CAN12852717 *TC *TY *TV *TL *TD
 GTPI +2663

De-Su BKM McCutchen 1174-ET

69990138 *TR *TP *TC *TY *TV *TL *TD
 PTA +246M +25F +11P 99R 4/22
 PTA +2.17T +1.41UDC +.98FLC GTPI +2212
Misty Springs Lavanguard Sue
 CAN9979603 VG-89-4Y-CAN 13*
 4-03 2x 365d 30,124 4.6 1380 3.2 968
 2-01 2x 365d 27,487 4.4 1197 3.3 906
 •Dam of 8 EX & 8 VG daughters
 •Dam of Walnutlawn Solomon-ET PTAT +2.58

Maternal sister to Snickers:

Avant-Garde DM Songbird-ET VG-89-4Y-CAN
 2-02 2x 365d 32,222 4.6 1495 3.7 1186
 •1st 4 Year Old Ontario Spring Discovery 2022
 •HM All-Canadian Sr. 3 Year Old 2021

3rd through 12th Dams:

Misty Springs FBI Suzanne-ET VG-87-2Y 4*
 2-02 2x 365d 26,138 4.6 1199 3.5 922
Willsona Freelance Sizzle-ET VG-86-2Y 10*
 2-02 3x 365d 25,490 3.9 1003 3.1 789
Gen-I-Beq Convincer Silver-ET VG-88-4Y 16*
 3-11 2x 330d 26,338 3.7 974 3.1 828
Glen Drummond Splendor VG-86-3Y-CAN 39*
 4-10 2x 314d 26,510 4.2 1124 3.2 840
Glen Drummond Aero Flower VG-88 18*
 2-03 2x 326d 25,622 4.0 1032 3.4 882
Glen Drummond Shower-ET EX-CAN 13*
 4-10 2x 365d 28,583 4.8 1380 3.6 1016
Glen Drummond S C Jo Beth EX-2E-CAN 7*
 Life: 6 lacts 141,637 4.2 5994 3.2 3593
Glen Drummond Matt Beth VG-85 4*
 11-10 2x 365d 25,038 3.7 935
 Life: 5 lacts 105,953 4.1 4295
Glen Drummond Marquis Beth VG-CAN
 4-08 2x 365d 15,964 5.7 754
 Life: 8 lacts 112,688 4.2 4766
Ferglynn Rag Apple Bertha VG-CAN 3*
 7-00 2X 365d 27,796 4.7 1303
 Life: 9 lacts 208,857 4.0 8344