



# ***\$NF Buster Sale***

***Online December 11<sup>th</sup>, 2021***

***Soft close begins at 12:00 Noon EST***

***[jerseyontario.hibid.com](http://jerseyontario.hibid.com)***

# ***\$NF Buster Sale***

## TERMS AND CONDITIONS OF SALE

### 1. How Do I Bid

All bidding will take place at **Hibid.com**, through **jerseyontario.hibid.com**. You simply need to join **Hibid.com** and have a method of payment on file to get approved to bid. If you have already been approved to bid from a previous Hibid.com auction there is no need to get approved again. It is best to go directly to <https://jerseyontario.hibid.com/> to register.

### 2. Bids are in Canadian Dollars

All bids in the Ontario Invitational Sale (OIS) On-line on-time auction and payments will be in Canadian dollars.

### 3. Auction Ends with a Soft Close

Online auctions will end one at a time in lot order starting at 12:00 noon EST, December 11<sup>th</sup>, 2021. End time will extend if a bid is placed within the last two minutes of the consignment auction.

### 4. Proxy Bidding

To place a proxy bid, type your maximum bid amount and click the bid button, your maximum bid is concealed and bids will be automatically placed only when another bidder places a bid. Bids will only increase by the minimum increments. In the event of a tie bid the winner will be the first bidder who placed the amount.

### 5. Terms of Sale

Hibid.com member who places the winning bid in an auction is in a binding contract, assumes ownership at the auction end time, and is required to make payment in full unless pre-approved terms have been established in writing. **No cattle will leave a seller's premise without payment in full. Trucking and required health testing for transport are the responsibility of the buyer.**

### 6. Payment

Ontario buyers may pay by cheque, direct payment or an e-transfer to "Jersey Ontario". **Buyers outside of Ontario** are required to make payment by credit card.

### 7. Trucking

Trucking is the responsibility of the buyer. Jersey Ontario can assist with coordination of trucking. **No cattle will leave the seller's premise until payment is made in full and funds have cleared.**

***For More Information or Assistance, please contact Jersey Ontario  
519-766-9980 or email: [ontario@jerseycanada.com](mailto:ontario@jerseycanada.com)***



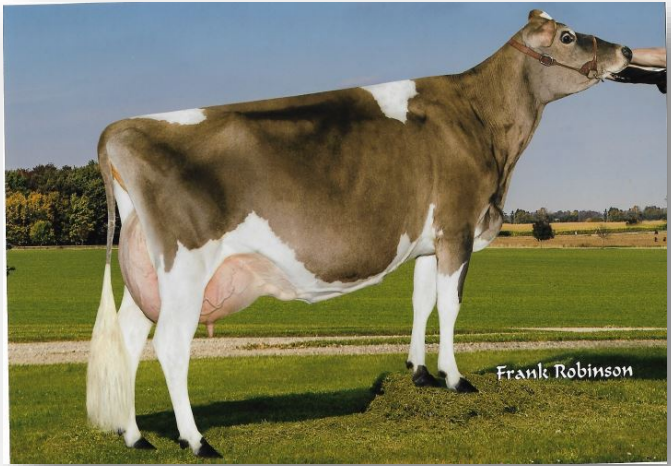
Lot #	Consignor Name	Animal Name	Age Class
1	Bri-Lin Jerseys	Bri-Lin Shoeshine Tango	Int. Milking Yearling
2	Spruce Briar	Spruce Briar Nuance Halana	Int. Milking Yearling
3	Weberlea Farms	Weberlea Respect Rider	Int. Milking Yearling
4	Spring Water Jerseys	Spring Water Irwin Swift	Int. Milking Yearling
5	Monoak Farms	Monoak Casino Splendor	Int. Milking Yearling
6	Wittekind Jerseys	Wittekind Hellcat Tessa	Milking Sr. Yearling
7	Belgia Farms	Swissbell MM Swan	Milking Sr. Yearling
8	Karnvilla Jerseys	Karnvilla Joyride Disney	Milking Sr. Yearling
9	Drentex Jerseys	Drentex Blkapple Glamour	Milking Sr. Yearling
10	Spruce Briar Farms	Spruce Briar Viral Grace	Milking Sr. Yearling
11	Earlmar Farms	Causeway Sharker Wendy	Summer 2-Year Old
12	Mari-Lane Jerseys	Mari-Lane Lemonhead Kreme	Summer 2-Year Old
13	Paullor Jerseys	Avonlea CF Hellcat Espresso	Summer 2-Year Old
14	Shady Glen Farms	Shady Glen Rufus Barr	Senior 2-Year Old
15	Paullor Jerseys	Sunstar Ellen Legacy	Senior 2-Year Old
16	Mari-Lane Jerseys	Mari-Lane Barcelona Daffodil	Senior 2-Year Old
17	Belgia Farms	Swissbell Puritan Vidal	Senior 2-Year Old
18	Enniskillen Jerseys	Enniskillen Andreas Daisy 531	Senior 2-Year Old
19	Aland Jerseys	JL Irwin Skylight	Senior 2-Year Old
20	Riverway Jersys	Riverway Tequila Radish	Senior 2-Year Old
21	AE Hoover Farms	AE Hoover Barcelona April	Junior 3-Year Old
22	Monoak Farms	Monoak Colton Selena	Senior 3-Year Old
23	AE Hoover Farms	AE Hoover Barcelona Agatha 380	Senior 3-Year Old
24	AE Hoover Farms	AE Hoover Joel Lisa	Senior 3-Year Old
25	Enniskillen Jerseys	Enniskillen Beautiful Di	Five-Year Old

**BRI-LIN SHOESHINE TANGO**  
**JECANF 13377725 - PUREBRED**

PA:(08/21) +40M, -3F,-0.05% +1P,+0.02% RPT.32%  
 CAN-ETA:(08/21) +7(PA) FC,27% RPT,90 RK, +1359(PA) LPI, +217 PRO\$  
 MR :97(PA), Inbr.Coeff. +5.40%, R-Value: +12%

*Fresh December 1<sup>st</sup>, 2021!*

**TATTOO:** RLJ 53H  
**BORN:** February 08, 2020  
**BREEDER:** Brian, Linda, Lucas, Jordan Raymer, Bright, ON  
**OWNER:** Brian, Linda, Lucas, Jordan Raymer, Bright, ON



*2<sup>nd</sup> Dam: BRI-LIN BOWTIE TINA ET - EX 90-2E (5-4) - 1\**

Sire :

**BRIDON SHOE SHINE**

JECANM 12185860  
 GPA:(08/21) -697M, -31F,+0.09% -27P,+0.02% RPT.70%  
 CAN-ETA:(08/21) +10(PA) FC,61% RPT,97 RK, +1175(PA) GLPI, -601 PRO\$  
 MR :98(PA), Inbr.Coeff. +4.38%, R-Value: +11%  
 5 prog class 2 VG, 3 GP, GP+100%



**3<sup>rd</sup> DAM: BRI-LIN C TOPS TRIXIE ET (RLJ 12F) EX 90 (6-11)6\***  
 9 LACT: 71234M, 3667F,5.15% 2960P,4.16% (222-210-238 +2M +12F +15P)  
 12 prog class 2 EX, 8 VG, 2 GP, GP+100%  
 Silver Award, AUGUST 1999 \* Lifetime Production Award, SEPTEMBER 2007

Dam:

**BRI-LIN CASINO TOPAZ - VG 88 (3-0)**

JECANF 12215955 Rump: 86, MS: 89, F&L: 88, DS: 87  
 1 11 305 6928 317 4.58 269 3.88(275 237 280)  
 2 11 266 7229 352 4.87 289 4.00(242 217 256)(Proj)  
 2 LACT: 13903M, 653F,4.70% 545P,3.92%  
 AVG. BCA:275M, 237F, 280P +41M +18F +39P  
 CAN-EBV:(08/21) +777M, +25F,-0.18% +30P,+0.02% RPT.59%  
 CAN-ETA:(08/21) +5 FC,46% RPT,77 RK, +1526 LPI, +1037 PRO\$  
 MR :96, Inbr.Coeff. +4.95%, R-Value: +13%

**3<sup>rd</sup> DAM 605185 BRI-LIN C TOPS TRIXIE ET (RLJ 12F) EX 90 (6-11)6\*, 1SA, 1LPA**

**4<sup>TH</sup> DAM 560480 STEMAR S JAY TRISHA (SMS 20Y) EX (4-7)**

**5<sup>TH</sup> DAM 511673 WILLOW DAWN TOOTS 14P (YFL 14P) SUP-EX (10-1)2\***

**TOWER VUE PRIME TEQUILA-ET**

JEUSAM 114816452  
 CAN-GEV:(08/21) -971M, -22F,+0.39% -28P,+0.14% RPT.99%  
 CAN-ETA:(08/21) +13 FC,97% RPT,99 RK, +1082 GLPI, -365 PRO\$  
 MR :92, Inbr.Coeff. +2.15%, R-Value: +9%

**BRIDON IATOLA POLISH ET - EX 95-5E (9-7) - 3\***

JECANF 9851829  
 5 4 305 11545 513 4.44 399 3.46(344 282 314)SA  
 6 5 305 11768 504 4.28 431 3.66(342 271 332)SA  
 8 4 305 10077 517 5.13 364 3.61(288 278 276)SA  
 7 LACT: 72870M, 3431F,4.71% 2501P,3.43%  
 AVG. BCA:280M, 242F, 249P +26M +10F +8P  
 5 prog class 1 EX, 2 VG, 2 GP, GP+100%  
 NOM. ALL ONTARIO SENIOR 2 YR OLD  
 1ST SENIOR 2 YR OLD, ONTARIO SPRING SHOW 2012  
 3RD FOUR YEAR OLD, BRANT-NORFOLK PARISH SHOW 2014  
 2ND FOUR YEAR OLD, STRATFORD CHAMPIONSHIP SHOW 2014  
 5TH 4 YEAR OLD, ROYAL AGRICULTURAL WINTER FAIR 2014

*5 Generations of VG & EX Dams!*

**ELLIOTTS REGENCY CASINO ET**

JE840M3125141657  
 CAN-GEV:(08/21) +942M, +38F,-0.13% +47P,+0.15% RPT.96%  
 CAN-ETA:(08/21) +5 FC,91% RPT,81 RK, +1883 GLPI, +1499 PRO\$  
 MR :103, Inbr.Coeff. +6.91%, R-Value: +16%

**BRI-LIN BOWTIE TINA ET - EX 90-2E (5-4) - 1\***

JECANF 11754564  
 3 1 305 7822 406 5.19 293 3.75(255 245 253)  
 4 2 305 7259 395 5.44 285 3.93(216 217 224)  
 5 3 305 8121 430 5.29 313 3.85(232 228 237)  
 4 LACT: 30699M, 1658F,5.40% 1180P,3.84%  
 AVG. BCA:235M, 235F, 237P +3M +17F +1P  
 4 prog class 2 VG, 2 GP, GP+100%

# SPRUCE BRIAR NUANCE HALANA JECANF 13503814 - PUREBRED

PA:(08/21) +215M, +30F,+0.26% +16P,+0.11% RPT.39%  
CAN-ETA:(08/21) +1(PA) FC,30% RPT,38 RK, +1657(PA) LPI, +1031 PRO\$  
MR :108(PA), Inbr.Coeff. +7.53%, R-Value: +15%

*Intermediate Milking*  
*Yearling*  
*Fresh November 10<sup>th</sup>!*



**BORN:** February 03, 2020  
**BREEDER:** Andrew & Anne Bromley & Tanner and Johanna Bromley, Westmeath, ON  
**OWNER:** Andrew & Anne Bromley & Tanner and Johanna Bromley, Westmeath, ON

## SIRE

### ST-LO NUANCE ET

JECANM 109541955  
CAN-GEBV:(08/21) +55M, +5F,+0.04% +2P,+0.01% RPT.88%  
CAN-ETA:(08/21) +4 FC,77% RPT,76 RK, +1658 GLPI, +639 PRO\$  
MR :113, Inbr.Coeff. +10.83%, R-Value: +16%  
57 prog class 23 VG, 26 GP, 8 G, GP+86%

## AHLEM BALIN-ET

JEUSAM 72520700  
CAN-GEBV:(08/21) -277M, -8F,+0.08% -16P,-0.07% RPT.97%  
CAN-ETA:(08/21) +1 FC,93% RPT,53 RK, +1604 GLPI, +189 PRO\$  
MR :113, Inbr.Coeff. +9.27%, R-Value: +17%

## *Production Pedigree!*

## DAM

### SPRUCE BRIAR CANADA ALANA - VG 85 (3-11)

JECANF 11633498 Rump: 83, MS: 85, F&L: 85, DS: 86  
2 3 305 6149 331 5.38 239 3.89(238 236 244)  
3 5 305 7561 433 5.73 301 3.98(264 274 276)SA  
4 9 305 7548 439 5.82 316 4.19(220 235 243)  
5 11 305 7922 495 6.25 336 4.24(218 254 243)  
6 11 285 6810 392 5.76 281 4.13(187 202 204)  
5 LACT: 38751M, 2284F, 5.89% 1613P, 4.16%  
AVG. BCA:225M, 240F, 242P +14M +50F +34P  
CAN-EBV:(08/21) +376M, +54F,+0.48% +30P,+0.22% RPT.66%  
CAN-ETA:(08/21) -1 FC,41% RPT,21 RK, +1615 LPI, +1341 PRO\$  
MR :102, Inbr.Coeff. +6.23%, R-Value: +14%  
2 prog class 1 GP, 1 G, GP+50%  
Silver Award, AUGUST 2017

3<sup>RD</sup> DAM 7775300 SPRUCE BRIAR GOODWIN TAMARA VG 87 (8-9)  
4<sup>TH</sup> DAM 10202286 SPRUCE BRIAR SATURN HONOUR (AWB 14H) GP 80 (2-6) 2\*  
5<sup>TH</sup> DAM 593219 SPRUCE BRIAR MARCUS EDNA (AWB 15D) GP 84 (2-5) SA  
6<sup>TH</sup> DAM 580893 SPRUCE BRIAR SILVER LYNN (ZLA 20B) GP 82 (2-5)  
7<sup>TH</sup> DAM 567610 SPRUCE BRIAR KNIGHT SONIA (ZLA 21Z) VG 88 (9-9)  
8<sup>TH</sup> DAM 538095 SPRUCE BRIAR SURVILLE EDNA 24U (ZLA 24U) VG 85 (3-7) 1\*  
9<sup>TH</sup> DAM 505436 SPRUCE BRIAR DANTES NORA 8N SUP-EX (10-6)  
10<sup>TH</sup> DAM 477079 SPRUCE BRIAR MASTER'S SONIA 7J VG 85 (2-7)  
11<sup>TH</sup> DAM 458905 BRAENEATH EQUITY SHEILA GP 83 (4-10)

### ST-LO SAMSON MIELLA - EX 90-3E (6-9)

JECANF 108145029  
3 6 305 8641 416 4.81 308 3.56(298 260 280)  
4 9 305 8834 411 4.65 331 3.75(265 225 263)  
5 9 304 8426 417 4.95 317 3.76(246 223 244)  
5 LACT: 44063M, 2127F, 4.83% 1651P, 3.75%  
AVG. BCA:254M, 219F, 247P +13M +4F +5P  
2 prog class 2 VG, GP+100%

## FDL MAID IN CANADA

JECANM 106359000  
CAN-GEBV:(08/21) +357M, +38F,+0.25% +26P,+0.17% RPT.88%  
CAN-ETA:(08/21) -5 FC,75% RPT,14 RK, +1486 GLPI, +921 PRO\$  
MR :99, Inbr.Coeff. +6.33%, R-Value: +14%

### SPRUCE BRIAR LEGACY YMARA - GP 81 (2-9)

JECANF 11102021  
3 1 305 5969 316 5.29 235 3.94(196 192 204)  
4 4 305 7077 338 4.78 270 3.82(220 192 221)  
5 4 305 8269 435 5.26 315 3.81(246 239 248)  
4 LACT: 29086M, 1513F, 5.20% 1135P, 3.90%

AVG. BCA:218M, 207F, 223P +16M +30F +23P  
1 prog class 1 VG, GP+100%

# WEBERLEA RESPECT RYDER JECANF 13597840 - PUREBRED

PA:(08/21) +708M, +51F,+0.11% +20P,-0.12% RPT.35%  
CAN-ETA:(08/21) +7(PA) FC,27% RPT,90 RK, +1711(PA) LPI, +1470 PRO\$  
MR :108(PA), Inbr.Coeff. +8.53%, R-Value: +16%

*Intermediate Milking Yearling  
Due January 5th, 2022  
to Sexed "Oliver-P"!*



**BORN:** January 22, 2020  
**BREEDER:** Jesse & Ellen Weber, St. Clements, ON 519-699-4978 Oscar  
**OWNER:** Jesse & Ellen Weber, St. Clements, ON 519-699-4978 Oscar

Sire :

## AHLEM KWYNN RESPECT ET

JEUSAM 67823687  
GMACE:(08/21) +899M, +74F,+0.22% +34P,-0.05% RPT.82%  
CAN-ETA:(08/21) +5(MACE) FC,65% RPT,81 RK, +1911(MACE) GLPI, +2224 PRO\$  
MR :111(MACE), Inbr.Coeff. +17.28%, R-Value: +17%  
59 prog class 11 VG, 38 GP, 10 G, GP+83%

## CDF KARBALA KWYNN

JE840M3005791893  
GMACE:(08/21) +811M, +48F,+0.05% +32P,+0.01% RPT.87%  
CAN-ETA:(08/21) +3(MACE) FC,78% RPT,70 RK, +1673(MACE) GLPI, +1646 PRO\$  
MR :105(MACE), Inbr.Coeff. +7.16%, R-Value: +16%



## AHLEM VOLCANO ROXIE 43070

JEUSAF 72721286

*5 Generations of VG & Ex  
Production Award Winning Dams  
Throughout this Pedigree*

Dam:

## WEBERLEA BARNABAS RIDDLE - GP 83 (2-2)

JECANF 12949418 Rump: 80, MS: 85, F&L: 81, DS: 82  
1 9 305 8836 404 4.57 300 3.40(359 311 323)GA  
1 LACT: 10060M, 466F,4.63% 347P,3.45%  
AVG. BCA:359M, 311F, 323P +51M +36F +19P  
CAN-EBV:(08/21) +518M, +27F,+0.01% +6P,-0.18% RPT.58%  
CAN-ETA:(08/21) +8 FC,44% RPT,94 RK, +1519 LPI, +760 PRO\$  
MR :104, Inbr.Coeff. +7.20%, R-Value: +16%  
Gold Award, DECEMBER 2020

## JARS OF CLAY BARNABAS

JEUSAM 67342492  
CAN-GEV:(08/21) +1270M, +46F,-0.24% +36P,-0.16% RPT.98%  
CAN-ETA:(08/21) +4 FC,96% RPT,76 RK, +1500 GLPI, +1498 PRO\$  
MR :100, Inbr.Coeff. +7.98%, R-Value: +17%

3<sup>RD</sup> DAM 7917522 WEBERLEA HORIZON ROSE EX 90 (8-6) 3\*, 4SA  
4<sup>TH</sup> DAM 8569403 SILVERDENE JEWELLER S ROSEBUD VG 85 (2-1) 2\*  
5<sup>TH</sup> DAM 9170885 SILVERDENE THUNDERS RITZY (OFT 2K) GP 83 (2-1)  
6<sup>TH</sup> DAM 582947 SILVERDENE CASPER'S ROSEBUD (OFT 90B) VG 86 (2-10)  
7<sup>TH</sup> DAM 558783 SILVERDENE CAPTAIN'S ROSETTA (OFT 51Y) SUP-EX 90 (10-5) 2\*

## WEBERLEA SULTAN RETA - VG 85 (4-0) - 2\*

JECANF 11188128  
4 9 305 9253 498 5.38 359 3.88(270 268 276)  
5 8 305 8575 489 5.70 345 4.02(242 256 257)  
6 9 291 9253 496 5.36 359 3.88(264 264 270)  
6 LACT: 47465M, 2663F,5.61% 1875P,3.95%  
AVG. BCA:249M, 259F, 259P -47M -11F -33P  
3 prog class 1 EX, 1 VG, 1 GP, GP+100%  
2 STAR BROOD COW, AUGUST 2021  
Silver Award, APRIL 2015

# SPRING WATER IRWIN SWIFT JECANF 13491339 - PUREBRED

PA:(08/21) +465M, +14F,-0.12% +11P,-0.08% RPT.41%  
CAN-ETA:(08/21) +6(PA) FC,35% RPT,85 RK, +1483(PA) LPI, +613 PRO\$  
MR :104(PA), Inbr.Coeff. +9.46%, R-Value: +18%

*Intermediate Milking Yearling  
Fresh December 2nd!  
Sells with her "Video" Heifer Calf!*

**BORN:** January 06, 2020  
**BREEDER:** Spring Water Jersey Ltd, West Montrose, ON  
**OWNER:** Spring Water Jersey Ltd, West Montrose, ON

Sire :

## ALL LYNNS VALENTINO IRWIN-ET

JEUSAM 117423084  
CAN-GEBV:(08/21) +866M, +21F,-0.30% +23P,-0.13% RPT.99%  
CAN-ETA:(08/21) +7 FC,97% RPT,93 RK, +1710 GLPI, +1182 PRO\$  
MR :107, Inbr.Coeff. +11.25%, R-Value: +20%  
434 prog class 51 EX, 165 VG, 187 GP, 29 G, 2 F, GP+93%



**6<sup>TH</sup> DAM: FRANKEN SATURN ROSE VG 88 (4-11) 5\*, 2SA, 1LPA**  
6 9 305 10741 463 4.31 377 3.51(298 241 277)SA  
1ST JUNIOR YEARLING, GOLDEN HORSESHOE 1999

Dam:

## SPRING WATER CAVALIA 71 - VG 85 (5-7)

JECANF 12367313 Rump: 85, MS: 85, F&L: 87, DS: 86  
1 11 305 6248 340 5.44 228 3.65(241 246 233)  
2 10 305 6920 354 5.12 262 3.79(233 220 232)  
4 0 305 7295 354 4.85 282 3.87(218 196 222)  
5 2 234 8616 478 5.55 320 3.71(247 254 242)(Proj)  
4 LACT: 28867M, 1521F,5.27% 1084P,3.76%  
AVG. BCA:231M, 221F, 229P -21M -7F -25P  
CAN-EBV:(08/21) +63M, +6F,+0.05% +0P,-0.03% RPT.66%  
CAN-ETA:(08/21) +4 FC,43% RPT,69 RK, +1243 LPI, -60 PRO\$  
MR :101, Inbr.Coeff. +11.32%, R-Value: +16%  
1 prog class 1 GP, GP+100%

## 3<sup>RD</sup> DAM 9341877 CAVA SENIOR ROSETTE VG 85 (3-2)

**4<sup>TH</sup> DAM 9341816 CAVA ROSANNE VG 85 (3-9) 3\*, 2SA, 3GA, 2PA, 1LPA**  
**5<sup>TH</sup> DAM 9341788 CAVA PARAMOUNT ROSA (CAVA 5M) VG 87 (3-1) 5\*, 5SA, 4GA, 2LPA**  
**6<sup>TH</sup> DAM 10031021 FRANKEN SATURN ROSE (ZGE 17H) VG 88 (4-11) 5\*, 2SA, 1LPA**  
**7<sup>TH</sup> DAM 602594 FRANKEN RENAISSANCE VIOLET (ZGE 4F) VG 87 (2-9)**  
**8<sup>TH</sup> DAM 562642 FRANKEN JUNO VIOLA (ZGE 8Z) EX (5-5)**  
**9<sup>TH</sup> DAM 541398 FRANKEN M L B RAY VIOLET 12W (ZGE 12W) VG 85 (2-0)**  
**10<sup>TH</sup> DAM 526252 FRANKEN TIMS TINA 9T (ZGE 9T) GP 80 (2-8)**  
**11<sup>TH</sup> DAM 506430 FRANKEN BR SPOT NORISSA 35N GP 82 (2-9)**  
**12<sup>TH</sup> DAM 474333 FRANKEN CLIMAX HELGA 23H VG 85 (3-6)**



## ALL LYNNS LOUIE VALENTINO-ET

JEUSAM 116279413  
CAN-GEBV:(08/21) +1495M, +28F,-0.60% +37P,-0.25% RPT.99%  
CAN-ETA:(08/21) +4 FC,98% RPT,76 RK, +1467 GLPI, +1627 PRO\$  
MR :103, Inbr.Coeff. +8.61%, R-Value: +20%

## JARS OF CLAY IATOLA 16710 2751 - VG 87 (2-8)

JEUSAF 67142751  
1 LACT: 9195M, 420F,4.57% 330P,3.59%  
1 prog class 1 VG, GP+100%

*9 Generations of VG & EX Dams  
Throughout this Production Award  
Winning Pedigree!*

## LENCREST CAVALIA -ET - GP 82 (5-9)

JECANM 104390550  
CAN-GEBV:(08/21) -94M, +13F,+0.24% -4P,-0.01% RPT.98%  
CAN-ETA:(08/21) +7 FC,95% RPT,93 RK, +1465 GLPI, +239 PRO\$  
MR :105, Inbr.Coeff. +11.55%, R-Value: +16%

## SPRING WATER ONTIME ROSETTE - GP 81 (2-4)

JECANF 11891918  
2 0 305 7057 323 4.58 262 3.71(272 232 267)  
3 1 305 8110 401 4.94 324 4.00(264 242 279)  
4 9 285 8193 419 5.11 326 3.98(246 229 259)  
3 LACT: 29471M, 1463F,4.96% 1187P,4.03%  
AVG. BCA:261M, 234F, 268P +22M +15F +29P  
1 prog class 1 VG, GP+100%

# MONOAK CASINO SPLENDOR

## JECANF 13257392 - PUREBRED - VG 85 (1-11)

Rump: 84, MS: 85, F&L: 87, DS: 85  
 PA:(08/21)+85M, +24F,+0.29% +12P,+0.12% RPT.38%  
 CAN-ETA:(08/21)+8(PA) FC,32% RPT,94 RK, +1647(PA) LPI, +879 PRO\$  
 MR :101(PA), Inbr.Coeff. +9.36%, R-Value: +15%

*Fresh October 20<sup>th</sup>, 2021*  
**1st test Nov.23: 26.5Kg 4.2%F 3.6%P**  
**SCC 20,000**  
**Currently Milking 30Kg/day &**  
**“Robot Ready”**



### TATTOO:

**BORN:** December 01, 2019  
**BREEDER:** Monoak Farms, Belmont, ON  
**OWNER:** Monoak Farms, Belmont, ON

### SIRE

#### ELLIOTTS REGENCY CASINO ET

JE840M3125141657  
 CAN-GEBV:(08/21)+942M, +38F,-0.13% +47P,+0.15% RPT.96%  
 CAN-ETA:(08/21)+5 FC,91% RPT,81 RK, +1883 GLPI, +1499 PRO\$  
 MR :103, Inbr.Coeff. +6.91%, R-Value: +16%  
 267 prog class 1 EX, 89 VG, 155 GP, 21 G, 1 F, GP+92%

### TJF VISIONARY REGENCY

JEUSAM 67248196  
 GMACE:(08/21)+1995M, +51F,-0.67% +76P,-0.03% RPT.91%  
 CAN-ETA:(08/21)+3(MACE) FC,82% RPT,70 RK, +1662(MACE) GLPI, +2330 PRO\$  
 MR :95(MACE), Inbr.Coeff. +7.59%, R-Value: +16%

### The Dam in her Working Clothes



**Dam: Monoak Colton Selena – VG 86 (3-**

### DAM

#### MONOAK COLTON SELENA - VG 86 (3-0)

JECANF 12863850 Rump: 88, MS: 85, F&L: 88, DS: 89  
 1 10 297 5640 333 5.90 233 4.13(221 245 240)  
 2 10 282 5747 344 5.99 244 4.25(193 214 216)  
 2 LACT: 11387M, 677F,5.95% 477P,4.19%  
 AVG. BCA:207M, 230F, 228P  
 CAN-EBV:(08/21)-773M, +10F,+0.70% -23P,+0.09% RPT.56%  
 CAN-ETA:(08/21)+10 FC,39% RPT,98 RK, +1426 LPI, +297 PRO\$  
 MR :99, Inbr.Coeff. +9.21%, R-Value: +14%  
 1 prog class 1 VG, GP+100%

- 3<sup>rd</sup> DAM 11172864 RICH VALLEY GG SELINA 214 (VTK 214) EX 92 (5-5)
- 4<sup>th</sup> DAM 7706228 RICH VALLEY VELOCITY SAVANNAH (VTK 118S) GP 83 (8-4)
- 5<sup>th</sup> DAM 10205970 CORNERSTONE FIRST PRIZE SARA (GMB 15J) EX 90 (4-9) 1\*, 1SA
- 6<sup>th</sup> DAM 598785 BOVI-LACT EXPERT SARA ET (DPS 1E) VG 85 (3-9)
- 7<sup>th</sup> DAM 490952 RICH VALLEY ADVANCE SARA 12L SUP-EX (11-6) 3\*
- 8<sup>th</sup> DAM 479479 RICH VALLEY A S M SELINA VG 85 (2-6)
- 9<sup>th</sup> DAM 438568 GARNETLEY ROSEBOY'S SHEILA SUP-EX 90 (10-2)
- 10<sup>th</sup> DAM 394057 KAHQUAH KARL'S SHEILA VG 89

### CHILLI PREMIER CINEMA ET - EX 93-2E (4-1)

JEUSAF 71577202  
 1 11 305 7587 369 4.86 284 3.74( NA NA NA)  
 2 11 305 9850 536 5.44 373 3.79( NA NA NA)  
 4 1 305 9623 540 5.61 375 3.90( NA NA NA)  
 3 LACT: 27060M, 1445F,5.34% 1032P,3.81%  
 2 prog class 1 EX, 1 VG, GP+100%

**9 Generations of VG & EX Dams**  
**Throughout this Pedigree!**

### CHILLI ACTION COLTON-ET

JEUSAM 66738335  
 CAN-GEBV:(08/21)-500M, +15F,+0.56% -8P,+0.15% RPT.98%  
 CAN-ETA:(08/21)+13 FC,95% RPT,99 RK, +1565 GLPI, +789 PRO\$  
 MR :96, Inbr.Coeff. +5.17%, R-Value: +15%

### RICH VALLEY GRANDIOUS SANGRIA - VG 85 (2-0)

JECANF 12498962  
 1 10 305 5955 325 5.46 206 3.46(238 244 217)  
 3 5 305 6126 348 5.68 266 4.34(214 220 244)  
 4 6 305 7843 518 6.60 323 4.12(248 298 269)  
 4 LACT: 22422M, 1366F,6.09% 914P,4.08%  
 AVG. BCA:233M, 254F, 243P  
 1 prog class 1 VG, GP+100%  
 2ND JUNIOR CALF, OXFORD SOUTHWESTERN JERSEY SHOW 2016  
 5TH JUNIOR YEARLING, OXFORD-SOUTHWESTERN PARISH SHOW 2017



## WITTEKIND HELLCAT TESSA

JECANF 13675939 - 93.8% pure

PA:(08/21) +1057M, +24F,-0.37% +30P,-0.13% RPT.33%  
CAN-ETA:(08/21) +3(PA) FC,26% RPT,59 RK, +1486(PA) LPI, +1154 PRO\$  
MR :101(PA), Inbr.Coeff. +7.65%, R-Value: +15%

*Fresh December 6<sup>th</sup>, 2021!*

*Sells with Heifer Calf by  
"Shan-Mar Archer Knock-Out"*

**BORN:** November 12, 2019  
**BREEDER:** Wittekind Jersey Farm, Delta, ON  
**OWNER:** Wittekind Jersey Farm, Delta, ON



Sire :

### UNIQUE HP HELLCAT

JECANM 12726323  
GPA:(08/21) +808M, +28F,-0.16% +31P,+0.00% RPT.72%  
CAN-ETA:(08/21) +8(PA) FC,65% RPT,94 RK, +1713(PA) GLPI, +1509 PRO\$  
MR :102(PA), Inbr.Coeff. +13.89%, R-Value: +17%  
45 prog class 5 VG, 36 GP, 4 G, GP+91%

### AHLEM TEXAS WILDCAT 22702-ET

JEUSAM 74067487  
CAN-GEV:(08/21) +1096M, +20F,-0.45% +46P,+0.06% RPT.96%  
CAN-ETA:(08/21) +7 FC,90% RPT,93 RK, +1770 GLPI, +1697 PRO\$  
MR :103, Inbr.Coeff. +8.68%, R-Value: +17%



*Dam: Wittekind Axel Tabby – VG 85 (3-3)*

Dam:

### WITTEKIND AXEL TABBY - VG 85 (3-3)

JECANF 13110684 Rump: 87, MS: 85, F&L: 83, DS: 86  
1 10 305 6660 287 4.31 225 3.38(261 211 232)  
3 0 276 8429 342 4.06 286 3.39(277 207 249)(Proj)  
2 LACT: 16235M, 685F,4.22% 553P,3.41%  
AVG. BCA:261M, 211F, 232P -14M -46F -36P  
CAN-EBV:(08/21) +1305M, +20F,-0.58% +29P,-0.25% RPT.59%  
CAN-ETA:(08/21) -2 FC,41% RPT,14 RK, +1259 LPI, +854 PRO\$  
MR :100, Inbr.Coeff. +6.76%, R-Value: +13%

### UNIQUE HP IRWIN HOCUS-ET - EX 92-4E (8-8) - 2\*

JEUSAF 118407621  
5 6 305 10936 677 6.19 466 4.26(340 387 382)  
6 10 305 11953 719 6.02 488 4.08(330 373 356)  
8 6 115 10044 559 5.57 401 3.99(309 323 326)(Proj)  
6 LACT: 59561M, 3624F,6.08% 2512P,4.22%  
AVG. BCA:273M, 307F, 299P +57M +104F +81P  
3 prog class 1 EX, 2 VG, GP+100%  
4TH SR THREE YEAR OLD, CALGARY DAIRY CLASSIC SHOW 2016  
2019 Double Hall of Fame Winner  
1st 5-Yr-Old, Red Deer Westerner Dairy Showcase 2018  
2 STAR BROOD COW, NOVEMBER 2019

*Production Pedigree!*

### SHOT OF NAT BARNABAS AXEL-ET

JEUSAM 119194298  
CAN-GEV:(08/21) +1329M, +47F,-0.26% +46P,-0.05% RPT.93%  
CAN-ETA:(08/21) -2 FC,85% RPT,30 RK, +1565 GLPI, +1553 PRO\$  
MR :102, Inbr.Coeff. +7.66%, R-Value: +16%

### WITTEKIND KYROS TABITHA - G 77 (3-2)

JECANF 12094833  
2 4 305 8999 455 5.06 317 3.52(323 303 302)SA  
3 5 305 9201 446 4.85 333 3.62(289 259 275)  
3 LACT: 22668M, 1129F,4.98% 813P,3.59%  
AVG. BCA:306M, 281F, 289P +21M +19F +17P  
2 prog class 1 VG, 1 G, GP+50%  
Silver Award, DECEMBER 2017

**SWISSBELL MM SWAN**  
**JECANF 13510876 - PUREBRED**

PA:(08/21) +612M, +18F,-0.15% +22P,+0.00% RPT.32%  
CAN-ETA:(08/21) +4(PA) FC,25% RPT,69 RK, +1533(PA) LPI, +964 PRO\$  
MR :102(PA), Inbr.Coeff. +5.59%, R-Value: +14%

*Milking Senior Yearling!*

*Fresh October 31<sup>st</sup>!*



**BORN:** October 27, 2019  
**BREEDER:** Walter & Marlies Kaehli, Grand Valley, ON  
**OWNER:** Han & Irma Brink, Grand Valley, ON

**Currently Milking: 31 Litres/day, 4.1%F, 3.3%P**  
**SCC: 13,000**

**SIRE**

**SILVERCAP FISHER MASTERMIND - VG 87 (2-3)**

JECANM 12785266  
GPA:(08/21) -303M, +18F,+0.45% +9P,+0.29% RPT.67%  
CAN-ETA:(08/21) +4(PA) FC,57% RPT,76 RK, +1353(PA) GLPI, +593 PRO\$  
MR :97(PA), Inbr.Coeff. +2.89%, R-Value: +12%

**HAWARDEN IMPULS PREMIER**

JEUSAM 67107510  
CAN-GEV:(08/21) +147M, +45F,+0.49% +26P,+0.28% RPT.99%  
CAN-ETA:(08/21) +7 FC,97% RPT,93 RK, +1874 GLPI, +1894 PRO\$  
MR :103, Inbr.Coeff. +0.32%, R-Value: +14%



**RIVER VALLEY TEQUILA MARMABY ET - EX 91 (4-11)**

JE840F3011049790  
2 6 217 4641 280 6.03 185 3.99( NA NA NA)  
3 6 305 8654 491 5.67 365 4.22(295 305 329)  
4 7 305 7330 388 5.29 316 4.31(236 227 268)  
4 LACT: 23806M, 1340F,5.63% 1000P,4.20%  
AVG. BCA:266M, 266F, 299P +13M +9F +26P  
1 prog class 1 G, GP+0%

*Production Pedigree!*

**DAM**

**SWISSBELL CHROME SPARROW - VG 85 (3-4)**

JECANF 12855302 Rump: 85, MS: 85, F&L: 85, DS: 88  
2 0 305 8352 333 3.99 284 3.40(326 243 293)  
3 1 305 8859 388 4.38 299 3.38(290 234 258)  
2 LACT: 17489M, 735F,4.20% 596P,3.41%  
AVG. BCA:308M, 239F, 276P +39M -7F +14P  
CAN-EBV:(08/21) +1526M, +18F,-0.74% +36P,-0.28% RPT.61%  
CAN-ETA:(08/21) +3 FC,43% RPT,59 RK, +1665 LPI, +1298 PRO\$  
MR :106, Inbr.Coeff. +7.74%, R-Value: +15%

**RIVER VALLEY CECE CHROME-ET**

JE840M3012423929  
CAN-GEV:(08/21) +1382M, +47F,-0.29% +42P,-0.13% RPT.97%  
CAN-ETA:(08/21) +6 FC,94% RPT,88 RK, +1959 GLPI, +1870 PRO\$  
MR :108, Inbr.Coeff. +8.28%, R-Value: +17%

- 3<sup>RD</sup> DAM 11528445 SWISSBELL HABIT SPICE GP 80 (2-5)
- 4<sup>TH</sup> DAM 7774658 SWISSBELL GILLER SPARKLE VG 87 (4-3)
- 5<sup>TH</sup> DAM 7438900 SWISSBELL CENTURIAN SKY GP 82 (2-3) 2SA, 1GA
- 6<sup>TH</sup> DAM 582995 LLOLYN ADVANCER VEDA 40B (PHK 40B) SUP-EX 90 (10-8)
- 7<sup>TH</sup> DAM 568220 LLOLYN GEMNI VEDA (PHK 40Z) EX (4-5)
- 8<sup>TH</sup> DAM 546590 LLOLYN J I S VEDA 39W (PHK 39W) GP 83 (2-2)
- 9<sup>TH</sup> DAM 492187 LLOLYN HORIZON VEDA 2 EX 92 (4-3)
- 10<sup>TH</sup> DAM 458167 LLOLYN M G VEDA 23E GP 80 (2-8)

**SWISSBELL RILEY SPARKLE492 - VG 85 (2-4)**

JECANF 12151312  
2 11 305 9675 447 4.62 371 3.83(344 288 347)GA  
4 0 305 10202 426 4.18 367 3.60(318 242 303)  
4 11 305 10256 442 4.31 366 3.57(306 240 288)  
5 LACT: 48629M, 2140F,4.40% 1769P,3.64%  
AVG. BCA:318M, 256F, 305P +40M +6F +32P  
2 prog class 2 VG, GP+100%  
Gold Award, NOVEMBER 2018  
Gold Award, DECEMBER 2017

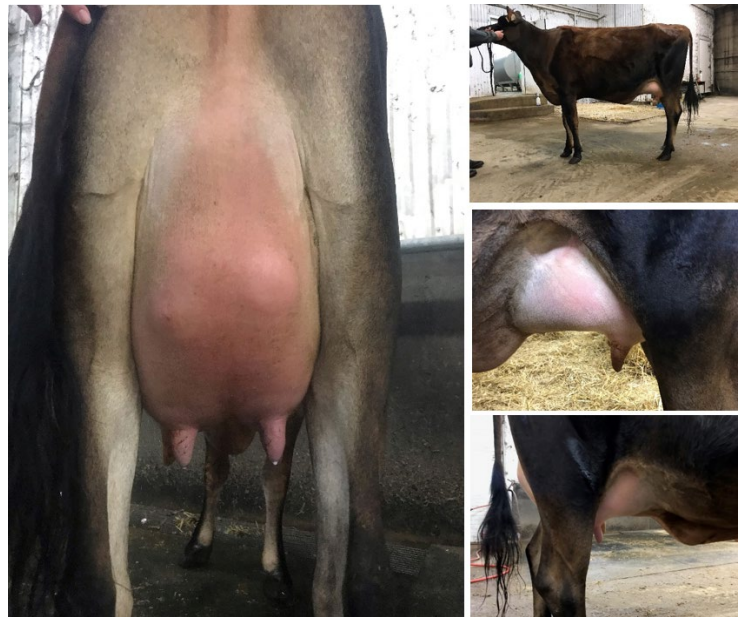
# KARNVILLA JOYRIDE DISNEY

## JECANF 13521879 - PUREBRED

PA:(08/21) -684M, +10F,+0.64% -9P,+0.25% RPT.37%  
 CAN-ETA:(08/21) +7(PA) FC,32% RPT,90 RK, +1298(PA) LPI, +105 PRO\$  
 MR :97(PA), Inbr.Coeff. +5.54%, R-Value: +14%

*Fresh November 28<sup>th</sup>!*

**BORN:** October 26, 2019  
**BREEDER:** Karnvilla Jerseys, Woodstock, ON  
**OWNER:** Karnvilla Jerseys, Woodstock, ON



### SIRE

#### RIVER VALLEY JOYRIDE ET

JE840M3126479085  
 CAN-GEV:(08/21) +112M, +29F,+0.31% +19P,+0.19% RPT.95%  
 CAN-ETA:(08/21) +11 FC,89% RPT,98 RK, +1560 GLPI, +1161 PRO\$  
 MR :96, Inbr.Coeff. +5.88%, R-Value: +16%  
 181 prog class 53 VG, 105 GP, 21 G, 2 F, GP+87%

### AHLEM TOPEKA RUFUS

JEUSAM 72520562  
 CAN-GEV:(08/21) +510M, +64F,+0.49% +36P,+0.22% RPT.90%  
 CAN-ETA:(08/21) +7 FC,78% RPT,93 RK, +1781 GLPI, +1983 PRO\$  
 MR :100, Inbr.Coeff. +6.50%, R-Value: +15%



### FERMAR PARAMOUNT JOY - EX 94-2E (7-3) - 14\*

JECANF 104419880  
 2 0 305 7170 356 4.97 290 4.04(288 268 309)GA  
 3 1 305 9707 506 5.21 396 4.08(345 329 370)PA  
 4 LACT: 39668M, 2066F,5.21% 1580P,3.98%  
 AVG. BCA:305M, 287F, 318P +59M +62F +66P  
 15 prog class 7 EX, 7 VG, 1 GP, GP+100%  
 1ST LIFETIME CHEESE PRODUCTION COW, WORLD DAIRY EXPO 2014  
 2ND JUNIOR 2 YR OLD, EXPO QUEBEC 2009  
 1ST JUNIOR 2 YR OLD, BBQ BELLECHASSE 2009  
 RESERVE ALL QUEBEC JUNIOR 2 YR OLD 2009  
 GRAND CHAMPION - EXPO BBQ BELLECHASSE 2014  
 HON MENTION ALL CANADIAN MATURE COW 2014

*7 Generations VG & EX  
 Throughout the Pedigree*

**3<sup>RD</sup> DAM: MAPLE LEAF MIAMI BEACH -ET VG 87 (3-8)**  
 3 8 305 7630 375 4.91 273 3.58(244 218 229)

### DAM

#### MAPLE LEAF SPIRIT OF ALOHA - GP 83 (2-9)

JECANF 12504512 Rump: 84, MS: 82, F&L: 83, DS: 84  
 2 5 264 4288 317 7.39 189 4.41(162 219 189)  
 1 LACT: 4288M, 317F,7.39% 189P,4.41%  
 AVG. BCA:162M, 219F, 189P  
 CAN-EBV:(08/21) -1480M, -10F,+0.97% -36P,+0.31% RPT.53%  
 CAN-ETA:(08/21) +2 FC,38% RPT,49 RK, +1038 LPI, -944 PRO\$  
 MR :98, Inbr.Coeff. +4.60%, R-Value: +12%

### PLEASANT NOOK WR TEQUILAS VENOM ET

JECANM 11950641  
 CAN-GEV:(08/21) -1930M, -30F,+1.03% -42P,+0.49% RPT.91%  
 CAN-ETA:(08/21) +6 FC,81% RPT,88 RK, +994 GLPI, -1018 PRO\$  
 MR :91, Inbr.Coeff. +4.16%, R-Value: +12%

- 3<sup>RD</sup> DAM 7862953 MAPLE LEAF MIAMI BEACH -ET VG 87 (3-8)**
- 4<sup>TH</sup> DAM 8434068 MAPLE LEAF MYSTERY -ET EX 91 (8-3) 9\***
- 5<sup>TH</sup> DAM 564782 PLEASANT NOOK ROYAL MARLENE (D8W 16Z) EX (4-4) 5\***
- 6<sup>TH</sup> DAM 543131 PLEASANT NOOK JUSTIN MABLE (D8W 4W)**
- 7<sup>TH</sup> DAM 504610 PLEASANT NOOK JODY'S MARTHA (D8W 26N) EX (6-1)**
- 8<sup>TH</sup> DAM 484553 PLEASANT NOOK M MARLENE EX 91 (3-2)**
- 9<sup>TH</sup> DAM 423258 MONTMAPLE POSING MABEL SUP-EX 90 (10-8)**

### MAPLE LEAF HAWAII FIVE-O - VG 88 (4-4)

JECANF 11138967  
 2 2 146 2270 113 4.98 74 3.26( 88 82 76)  
 3 2 291 6531 329 5.04 242 3.71(220 203 214)  
 4 2 305 6359 335 5.27 235 3.70(196 190 191)  
 3 LACT: 15783M, 823F,5.21% 581P,3.68%  
 AVG. BCA:168M, 158F, 160P -39M -19F -37P  
 2 prog class 1 VG, 1 GP, GP+100%

**DRENTEX BLKAPPLE GLAMOUR**  
**JECANF 13609592 - PUREBRED**

PA:(08/21) -558M, -18F,+0.15% -29P,-0.09% RPT.27%  
 CAN-ETA:(08/21) +6(PA) FC,18% RPT,85 RK, +1113(PA) LPI, -630 PRO\$  
 MR :98(PA), Inbr.Coeff. +7.94%, R-Value: +12%

*Fresh October 1<sup>st</sup>, 2021*



*2<sup>nd</sup> Dam: DRENTEX GOLD GLAMOUROUS - EX 93-3E (7-6)*

**BORN:** October 11, 2019  
**BREEDER:** Michael & Monique Bols, Russell, ON  
**OWNER:** Michael & Monique Bols, Russell, ON

Sire :  
**RAPID BAY BLACK APPLE**

JECANM 108937051  
 PA:(08/21) -320M, +0F,+0.25% -18P,-0.07% RPT.44%  
 CAN-ETA:(08/21) +4(PA) FC,38% RPT,76 RK, +1172(PA) LPI, -265 PRO\$  
 MR :99(PA), Inbr.Coeff. +7.00%, R-Value: +15%  
 62 prog class 36 VG, 24 GP, 2 G, GP+97%



**6<sup>th</sup> DAM 547356 ENNISKILLEN TITLE GROVE (JWG 272) SUP-EX 94(11-2) 6\***

Dam:  
**DRENTEX GUNMAN GLITTER - EX 94-2E (5-1)**

JECANF 12154952 Rump: 94, MS: 95, F&L: 90, DS: 96  
 2 0 305 6515 351 5.39 253 3.88(261 260 266)  
 3 1 305 6356 345 5.43 253 3.98(214 212 224)  
 4 1 305 7287 374 5.13 279 3.83(226 211 229)  
 3 LACT: 20848M, 1110F,5.32% 814P,3.90%  
 AVG. BCA:234M, 228F, 240P +18M +13F +9P  
 CAN-EBV:(08/21) -796M, -37F,+0.05% -39P,-0.12% RPT.62%  
 CAN-ETA:(08/21) +7 FC,36% RPT,90 RK, +1017 LPI, -1042 PRO\$  
 MR :97, Inbr.Coeff. +10.18%, R-Value: +9%

**3<sup>rd</sup> DAM 9633750 DRENTEX AMEDEO GOLDY ET SUP-EX 91 (12-1)**

**4<sup>th</sup> DAM 8454420 DRENTEX DUKE GENEVERE VG 88 (3-9) 3\***

**5<sup>th</sup> DAM 10011992 ENNISKILLEN MCT GROVE III ET (JWG 7G) G 77 (2-7)**

**6<sup>th</sup> DAM 547356 ENNISKILLEN TITLE GROVE (JWG 272) SUP-EX 94(11-2) 6\***

**7<sup>th</sup> DAM 486248 ENNISKILLEN GENERATOR GROVE SUP-EX (12-6) 1\***

**8<sup>th</sup> DAM 458279 PINE GROVE B D M FLASHIE EX 90 (4-7)**

**9<sup>th</sup> DAM 436908 PINE GROVE CLIMAX FLASH VG 86 (8-4)**

**STEINHAUERS IATOLA APPLEJACK**

JEUSAM 115488982  
 CAN-GEV:(08/21) +366M, +10F,-0.12% +11P,-0.04% RPT.92%  
 CAN-ETA:(08/21) +0 FC,81% RPT,44 RK, +1248 GLPI, +337 PRO\$  
 MR :98, Inbr.Coeff. +7.18%, R-Value: +17%

**RAPID BAY GETAWAY BELLE ET - EX 94-2E (7-3) - 1\***

JECANF 107536358  
 3 8 305 7693 472 6.14 278 3.61(259 290 246)  
 4 9 305 8143 485 5.96 305 3.75(260 282 256)  
 6 7 305 8637 538 6.23 309 3.58(260 301 245)  
 5 LACT: 47841M, 3018F,6.31% 1837P,3.84%  
 AVG. BCA:251M, 277F, 240P +34M +59F +20P  
 3 prog class 1 EX, 2 VG, GP+100%  
 17TH SENIOR 2 YEAR OLD, ROYAL AGRICULTURAL WINTER FAIR 2014  
 3RD FEMME 1 AN SENIOR SALON INTERNATIONAL LAITIER 2013  
 7TH SENIOR CALF, ROYAL WINTER FAIR 2012  
 11TH FOUR YEAR OLD, ROYAL AGRICULTURAL WINTER FAIR 2016  
 1ST SR THREE YEAR OLD, ROYAL AGRICULTURAL WINTER FAIR 2015

**RAPID BAY GUNMAN ET**

JECANM 107536364  
 PA:(08/21) -860M, -38F,+0.15% -38P,-0.03% RPT.34%  
 CAN-ETA:(08/21) +3(PA) FC,30% RPT,70 RK, +853(PA) LPI, -1154 PRO\$  
 MR :98(PA), Inbr.Coeff. +5.17%, R-Value: +8%

**DRENTEX GOLD GLAMOUROUS - EX 93-3E (7-6)**

JECANF 11186534  
 4 2 305 8466 406 4.80 316 3.73(273 237 268)  
 5 8 305 8543 418 4.89 328 3.84(241 219 245)  
 7 2 305 9413 456 4.84 347 3.69(282 252 273)  
 5 LACT: 46891M, 2338F,4.99% 1771P,3.78%  
 AVG. BCA:265M, 242F, 257P +48M +21F +31P  
 2 prog class 1 EX, 1 VG, GP+100%

NOMINATED ALL ONTARIO JUNIOR THREE YEAR OLD 2016  
 NOMINATED ALL ONTARIO JUNIOR TWO YEAR OLD 2015  
 NOMINATED ALL CANADIAN JUNIOR TWO YEAR OLD 2015  
 1st 5 Year Old & GR.CH.EASTERN ONTARIO WESTERN QUEBEC SHOW 2018  
 8TH JUNIOR THREE YEAR OLD, ROYAL AGRICULTURAL WINTER FAIR 2016  
 7TH JR TWO YEAR OLD, ROYAL AGRICULTURAL WINTER FAIR 2015  
 1st Mature Cow, EASTERN ONTARIO/WESTERN QUEBEC CHAMPIONSHIP SHOW 2019

# SPRUCE BRIAR VIRAL GRACE JECANF 13503806 - PUREBRED

PA:(08/21) +141M, +33F,+0.35% +11P,+0.07% RPT.40%  
CAN-ETA:(08/21) +5(PA) FC,33% RPT,77 RK, +1399(PA) LPI, +836 PRO\$  
MR :96(PA), Inbr.Coeff. +10.00%, R-Value: +14%

*Fresh October 24<sup>th</sup>!*



**BORN:** September 13, 2019  
**BREEDER:** Andrew & Anne Bromley & Tanner and Johanna Bromley, Westmeath, ON  
**OWNER:** Andrew & Anne Bromley & Tanner and Johanna Bromley, Westmeath, ON

## SIRE

### BUSHLEA PN VIRAL ET

JEAUSM 705410  
CAN-GEBV:(08/21) +365M, +60F,+0.54% +30P,+0.21% RPT.97%  
CAN-ETA:(08/21) +8 FC,91% RPT,94 RK, +1713 GLPI, +1985 PRO\$  
MR :93, Inbr.Coeff. +4.44%, R-Value: +15%  
232 prog class 1 EX, 87 VG, 108 GP, 36 G, GP+84%

## HAWARDEN IMPULS PREMIER

JEUSAM 67107510  
CAN-GEBV:(08/21) +147M, +45F,+0.49% +26P,+0.28% RPT.99%  
CAN-ETA:(08/21) +7 FC,97% RPT,93 RK, +1874 GLPI, +1894 PRO\$  
MR :103, Inbr.Coeff. +0.32%, R-Value: +14%

*7 Generations of VG & EX Dams  
Throughout this  
Production Pedigree!*

## ARETHUSA ON TIME VOGUE-ET - EX 94 (5-1) - 3\*

JEUSAF 117193004  
2 0 305 5402 353 6.53 240 4.44(225 274 264)  
4 9 305 8983 559 6.22 405 4.51(262 301 312)  
3 LACT: 28387M, 1808F, 6.37% 1306P, 4.60%  
AVG. BCA:268M, 316F, 314P +30M +83F +72P  
3 prog class 3 EX, GP+100%  
2013 ALL ONTARIO JR 3 YR OLD  
2012 Ontario Summer Show - Intermediate Champion  
2012 Ontario Summer Show - Hon. Mention Grand Champion  
1ST JUNIOR 2 YR OLD, ROYAL WINTER FAIR 2012  
HON MENTION INTERMEDIATE CHAMPION, ROYAL WINTER FAIR 2012

## DAM

### SPRUCE BRIAR MONEY DIXIE - EX 91 (5-2)

JECANF 12256674 Rump: 92, MS: 90, F&L: 90, DS: 93  
2 0 305 4859 263 5.41 180 3.70(195 195 189)  
3 0 283 5378 290 5.39 206 3.83(190 186 192)  
4 0 305 7325 419 5.72 270 3.69(245 254 239)  
4 11 71 7005 360 5.14 247 3.53(224 209 208)(Proj)  
4 LACT: 19672M, 1070F, 5.44% 731P, 3.72%  
AVG. BCA:210M, 212F, 207P +6M +18F +1P  
CAN-EBV:(08/21) -83M, +6F,+0.15% -9P,-0.07% RPT.63%  
CAN-ETA:(08/21) +1 FC,43% RPT,38 RK, +1032 LPI, -406 PRO\$  
MR :98, Inbr.Coeff. +7.76%, R-Value: +13%

## HOMETOWN ON THE MONEY - VG 89 (1-11)

JECANM 9558276  
CAN-GEBV:(08/21) +186M, -13F,-0.30% +0P,-0.09% RPT.98%  
CAN-ETA:(08/21) +1 FC,95% RPT,53 RK, +909 GLPI, -578 PRO\$  
MR :95, Inbr.Coeff. +5.56%, R-Value: +13%

- 3<sup>rd</sup> DAM 7775290 SPRUCE BRIAR FUSION TIKKI GP 83 (3-10)
- 4<sup>th</sup> DAM 8743660 SPRUCE BRIAR COUNCILLER NIXIE VG 85 (6-9)
- 5<sup>th</sup> DAM 595239 SPRUCE BRIAR MERIT DIXIE (AWB 18D) VG 85 (3-7) 2\*
- 6<sup>th</sup> DAM 567610 SPRUCE BRIAR KNIGHT SONIA (ZLA 21Z) VG 88 (9-9)
- 7<sup>th</sup> DAM 538095 SPRUCE BRIAR SURVILLE EDNA 24U (ZLA 24U) VG 85 (3-7) 1\*
- 8<sup>th</sup> DAM 505436 SPRUCE BRIAR DANTES NORA 8N SUP-EX (10-6)
- 9<sup>th</sup> DAM 477079 SPRUCE BRIAR MASTER'S SONIA 7J VG 85 (2-7)
- 10<sup>th</sup> DAM 458905 BRAENEATH EQUITY SHEILA GP 83 (4-10)

## SPRUCE BRIAR JACE AMELIA - GP 81 (2-6)

JECANF 11633503  
2 2 305 5240 255 4.87 188 3.59(212 190 200)  
2 LACT: 5669M, 284F, 5.01% 203P, 3.58%  
AVG. BCA:212M, 190F, 200P +13M +18F +4P  
1 prog class 1 EX, GP+100%

**CAUSEWAY SHARKER WENDY  
JECANF 13095363 - PUREBRED**

PA:(08/21) -38M, +6F,+0.11% +3P,+0.06% RPT.40%  
CAN-ETA:(08/21) +0(PA) FC,33% RPT,29 RK, +1061(PA) LPI, +5 PRO\$  
MR :97(PA), Inbr.Coeff. +7.01%, R-Value: +14%

*Summer 2-Year Old  
Fresh October 28<sup>th</sup>, 2021!*

**BORN:** August 26, 2019  
**BREEDER:** Causeway Farm Ltd, Bright, ON  
**OWNER:** Causeway Farm Ltd, Bright, ON



Sire :

**HERITAGE SHARKER ET**

JECANM 108716564  
CAN-GEBV:(08/21) -250M, +28F,+0.54% +7P,+0.24% RPT.96%  
CAN-ETA:(08/21) -1 FC,89% RPT,38 RK, +1079 GLPI, +281 PRO\$  
MR :98, Inbr.Coeff. +6.01%, R-Value: +14%  
182 prog class 1 EX, 25 VG, 113 GP, 41 G, 2 F, GP+76%

**SUNSET CANYON MASERATI-ET**

JEUSAM 117763717  
CAN-GEBV:(08/21) -210M, +58F,+0.91% +13P,+0.28% RPT.94%  
CAN-ETA:(08/21) -1 FC,87% RPT,38 RK, +1208 GLPI, +681 PRO\$  
MR :96, Inbr.Coeff. +5.43%, R-Value: +12%



**VERMALAR BRANSON SHANIE ET - VG 85 (3-4) - 3\***

JECANF 107352375  
4 9 305 8702 494 5.68 356 4.09(273 281 294)SA  
5 11 263 9261 521 5.63 378 4.08(261 273 280)(Proj)  
6 11 244 7080 419 5.92 286 4.04(197 218 210)  
5 LACT: 39786M, 2245F,5.64% 1608P,4.04%  
AVG. BCA:231M, 238F, 242P -15M +6F -11P  
3 prog class 2 VG, 1 GP, GP+100%  
3 STAR BROOD COW, DECEMBER 2020  
Silver Award, AUGUST 2017

Dam:

**CAUSEWAY I POD WINTER ET - VG 86 (3-0)**

JECANF 11435825 Rump: 84, MS: 85, F&L: 86, DS: 87  
1 11 305 5103 235 4.61 179 3.51(203 175 188)  
2 11 305 6912 290 4.20 243 3.52(234 181 217)  
4 2 305 8514 391 4.59 295 3.46(276 231 252)  
5 4 305 7220 336 4.65 262 3.63(227 193 218)  
6 4 299 7449 335 4.50 274 3.68(229 190 222)  
6 LACT: 38772M, 1750F,4.51% 1391P,3.59%  
AVG. BCA:234M, 194F, 219P +11M -5F +5P  
CAN-EBV:(08/21) +175M, -16F,-0.32% -2P,-0.12% RPT.65%  
CAN-ETA:(08/21) +1 FC,43% RPT,38 RK, +1029 LPI, -297 PRO\$  
MR :96, Inbr.Coeff. +6.75%, R-Value: +15%

**LENCREST I POD -ET - EX 90 (4-9)**

JECANM 104390545  
CAN-GEBV:(08/21) -300M, -6F,+0.13% -6P,+0.07% RPT.98%  
CAN-ETA:(08/21) -2 FC,97% RPT,30 RK, +989 GLPI, -268 PRO\$  
MR :93, Inbr.Coeff. +9.14%, R-Value: +17%

- 3<sup>RD</sup> DAM 7431948 WAYMAR CHAIRMAN WILONA (D9W 28P) SUP-EX 91 (15-10) 2\*, 2LPA
- 4<sup>TH</sup> DAM 10210473 WAYMAR NITRO WILMA (D9W 11K) GP 82 (2-5)
- 5<sup>TH</sup> DAM 602990 WAYMAR DYNAMO WYNONA (D9W 5F) GP 82 (2-9)
- 6<sup>TH</sup> DAM 578958 WAYMAR JUNO WILMA (D9W 23B) VG 85 (4-3)
- 7<sup>TH</sup> DAM 519949 WAYMAR PACEMASTER WENDY 29R VG 85 (6-1)

**CAUSEWAY COMERICA WENDY - EX 90-3E (9-5) - 2\***

JECANF 9575978  
4 6 305 7202 327 4.54 254 3.53(218 182 203)  
6 11 305 7269 314 4.32 258 3.55(209 167 195)  
9 3 305 7227 327 4.52 261 3.61(201 174 192)  
8 LACT: 54433M, 2435F,4.47% 1982P,3.64%  
AVG. BCA:206M, 170F, 196P -14M -20F -11P  
7 prog class 1 EX, 4 VG, 2 GP, GP+100%  
2 STAR BROOD COW, NOVEMBER 2018

**MARI-LANE LEMONHEAD KREME -TW**  
**JECANF 13494300 – PUREBRED – GP 82 (2-5)**

2 2 57 7204 425 5.90 264 3.66(281 306 272)(Proj)  
 1 LACT: 1453M, 80F,5.51% 51P,3.51%  
 GPA:(08/21) -284M, +29F,+0.59% +1P,+0.17% RPT.63%  
 CAN-ETA:(08/21) +2(PA) FC,53% RPT,49 RK, +1400(PA) GLPI, +534 PRO\$  
 MR :102(PA), Inbr.Coeff. +7.11%, R-Value: +15%

**Looking for Milk?**

**Fresh September 19, 2021**

**Tested Nov. 15 with 27 kgs, 5.8 BF, 3.5P, SCC 19**

**BORN:** July 01, 2019  
**BREEDER:** Marianne Cook, Stratford, ON  
**OWNER:** Marianne Cook, Stratford, ON



**SIRE**

**STEINHAUERS SAMSON LEMONHEAD**

JEUSAM 118662185  
 CAN-GEV:(08/21) +480M, +41F,+0.22% +22P,+0.05% RPT.92%  
 CAN-ETA:(08/21) +1 FC,83% RPT,53 RK, +1472 GLPI, +1322 PRO\$  
 MR :104, Inbr.Coeff. +7.25%, R-Value: +17%  
 95 prog class 3 EX, 33 VG, 48 GP, 11 G, GP+88%

**DP VALENTINO SAMSON**

JEUSAM 67106977  
 CAN-GEV:(08/21) +1417M, +45F,-0.35% +42P,-0.15% RPT.94%  
 CAN-ETA:(08/21) +2 FC,87% RPT,61 RK, +1470 GLPI, +1762 PRO\$  
 MR :105, Inbr.Coeff. +11.42%, R-Value: +20%



**2<sup>nd</sup> Dam: GOLDEN GETAWAY KILIMANJARO - EX 92-5E (8-7) - 2\***

**DAM**

**MARI-LANE BEAUTIFUL KILALA - VG 86 (3-3)**

JECANF 12425089 Rump: 87, MS: 86, F&L: 86, DS: 87  
 1 8 305 6122 354 5.78 244 3.99(257 281 271)SA  
 3 0 305 6466 383 5.92 276 4.27(234 254 263)  
 4 1 293 7347 425 5.78 309 4.21(243 256 269)  
 4 LACT: 24463M, 1438F,5.88% 1021P,4.17%  
 AVG. BCA:245M, 264F, 268P -3M +23F +16P  
 CAN-EBV:(08/21) -676M, +12F,+0.65% -6P,+0.29% RPT.65%  
 CAN-ETA:(08/21) +4 FC,42% RPT,69 RK, +1409 LPI, +99 PRO\$  
 MR :100, Inbr.Coeff. +5.84%, R-Value: +13%  
 Silver Award, JANUARY 2019

- 3<sup>RD</sup> DAM 8890186 GOLDEN VINDICATION KIERSTEN EX 91 (6-7)**
- 4<sup>TH</sup> DAM 10204593 GOLDEN JUNO KENO (BUR 9J) EX 91 (5-9) 2\***
- 5<sup>TH</sup> DAM 584527 GOLDEN GROVE KAREN (BUR 4C) GP 83 (2-1) 2\***
- 6<sup>TH</sup> DAM 549320 SHELLANE S G KATHY 10X (RAS 10X) VG 86 (3-1) 1\***
- 7<sup>TH</sup> DAM 483171 PLACID ACRES E M KATHARINE 4K (YJY 4K) GP 84 (5-0)**

**STEINHAUERS RENEGADE LEMONPIE-ET - VG 88 (3-5)**

JEUSAF 117255575  
 2 LACT: 13687M, 677F,4.95% 549P,4.01%

*Production backed by 5 Generations  
 VG & EX dams throughout the  
 pedigree!*

**COMESTAR JDF BEAUTIFULL ET - G 78 (5-3)**

JECANM 105752959  
 CAN-GEV:(08/21) -507M, +9F,+0.48% +0P,+0.27% RPT.98%  
 CAN-ETA:(08/21) +6 FC,95% RPT,88 RK, +1429 GLPI, +183 PRO\$  
 MR :103, Inbr.Coeff. +6.80%, R-Value: +16%

**GOLDEN GETAWAY KILIMANJARO - EX 92-5E (8-7) - 2\***

JECANF 11421579  
 3 10 305 7218 410 5.68 287 3.98(240 248 252)  
 6 1 305 7260 398 5.48 296 4.08(219 220 237)  
 7 2 305 7229 427 5.91 287 3.97(208 228 217)  
 7 LACT: 46455M, 2673F,5.75% 1837P,3.95%  
 AVG. BCA:211M, 224F, 219P -28M -4F -19P  
 5 prog class 1 EX, 2 VG, 2 GP, GP+100%  
 2 STAR BROOD COW, NOVEMBER 2019

# AVONLEA CF HELLCAT EXPRESSO

## JECANF 13478475 - PUREBRED

PA:(08/21) -244M, -6F,+0.12% -8P,+0.02% RPT.34%  
CAN-ETA:(08/21) +8(PA) FC,27% RPT,94 RK, +1360(PA) LPI, +292 PRO\$  
MR :101(PA), Inbr.Coeff. +5.67%, R-Value: +14%

*Summer 2-Year Old  
Fresh October 12<sup>th</sup>  
"Robot Ready"!*



**BORN:** June 11, 2019  
**BREEDER:** Avonlea Genetics & Cybil Fisher, Brighton, ON  
**OWNER:** Paul & Lorraine Franken, Clinton, ON

### SIRE

#### UNIQUE HP HELLCAT

JECANM 12726323  
GPA:(08/21) +808M, +28F,-0.16% +31P,+0.00% RPT.72%  
CAN-ETA:(08/21) +8(PA) FC,65% RPT,94 RK, +1713(PA) GLPI, +1509 PRO\$  
MR :102(PA), Inbr.Coeff. +13.89%, R-Value: +17%  
43 prog class 5 VG, 34 GP, 4 G, GP+91%

### AHLEM TEXAS WILDCAT 22702-ET

JEUSAM 74067487  
CAN-GEV:(08/21) +1096M, +20F,-0.45% +46P,+0.06% RPT.96%  
CAN-ETA:(08/21) +7 FC,90% RPT,93 RK, +1770 GLPI, +1697 PRO\$  
MR :103, Inbr.Coeff. +8.68%, R-Value: +17%

*6 Generations of VG & EX  
Production Award Winning Dam  
Throughout this Pedigree!*

### UNIQUE HP IRWIN HOCUS-ET - EX 92-4E (8-8) - 2\*

JEUSAF 118407621  
5 6 305 10936 677 6.19 466 4.26(340 387 382)  
6 10 305 11953 719 6.02 488 4.08(330 373 356)  
8 6 91 9531 473 4.96 358 3.76(293 273 291)(Proj)  
6 LACT: 58686M, 3568F,6.08% 2474P,4.22%  
AVG. BCA:273M, 307F, 299P +57M +104F +81P  
3 prog class 1 EX, 2 VG, GP+100%  
4TH SR THREE YEAR OLD, CALGARY DAIRY CLASSIC SHOW 2016  
2019 Double Hall of Fame Winner  
1st 5-Yr-Old, Red Deer Westerner Dairy Showcase 2018  
2 STAR BROOD COW, NOVEMBER 2019

### DAM

#### MAUGHLIN VELOCITY EVA - EX 91 (3-11)

JECANF 11509415 Rump: 86, MS: 94, F&L: 89, DS: 91  
1 9 305 5201 306 5.88 206 3.96(207 230 217)  
2 8 305 5132 263 5.12 196 3.82(176 166 178)  
3 9 305 7662 436 5.69 293 3.82(235 246 236)  
5 0 305 6956 361 5.19 266 3.82(201 193 203)  
5 LACT: 29017M, 1590F,5.48% 1111P,3.83%  
AVG. BCA:205M, 209F, 209P -16M -1F -14P  
CAN-EBV:(08/21) -1296M, -39F,+0.41% -47P,+0.05% RPT.65%  
CAN-ETA:(08/21) +8 FC,44% RPT,94 RK, +1041 LPI, -876 PRO\$  
MR :100, Inbr.Coeff. +7.81%, R-Value: +11%  
1 prog class 1 G, GP+0%

### ARETHUSA JADE VELOCITY-ET

JEUSAM 117243204  
CAN-GEV:(08/21) -1309M, -56F,+0.19% -61P,-0.14% RPT.97%  
CAN-ETA:(08/21) +9 FC,92% RPT,96 RK, +1043 GLPI, -1114 PRO\$  
MR :98, Inbr.Coeff. +7.07%, R-Value: +12%

3<sup>rd</sup> DAM 9280601 MAUGHLIN ETERNITY SUP-EX 91 (10-2) 6\*, 1LPA  
4<sup>th</sup> DAM 10030757 PLEASANT NOOK DC EVITA (D8W 15H) EX 91 (7-9) 5\*  
5<sup>th</sup> DAM 567387 PLEASANT NOOK JUNO EVE (D8W 32Z) VG 87 (10-10) 1SA, 1LPA  
6<sup>th</sup> DAM 540163 PLEASANT NOOK TOP EMILY (D8W 20U) VG 85 (4-5) 1SA  
7<sup>th</sup> DAM 522816 PLEASANT NOOK STARDUST ELEGANT (D8W 16S)  
8<sup>th</sup> DAM 499213 PLEASANT NOOK BRIGHT ELLIE GP 82 (2-3)  
9<sup>th</sup> DAM 487726 PLEASANT NOOK B D M ELISA  
10<sup>th</sup> DAM 460264 MARGO'S MAID ELIZABETH 4E VG 86 (5-3)

### MAUGHLIN J IMPERIAL ELEGANT - EX 93-6E (9-5) - 1\*

JECANF 7440949  
5 0 305 6656 380 5.71 298 4.48(192 202 226)  
6 0 305 6272 364 5.80 266 4.24(176 190 197)  
7 4 302 6296 338 5.37 254 4.03(174 177 186)  
8 LACT: 46883M, 2671F,5.70% 2008P,4.28%  
AVG. BCA:187M, 197F, 209P -34M -6F -17P  
2 prog class 2 EX, GP+100%  
1 STAR BROOD COW, NOVEMBER 2017



**SHADY GLEN RUFUS BARR**  
**JECANF 13268856 - PUREBRED**

GPA:(08/21) +167M, +30F,+0.28% +15P,+0.11% RPT.64%  
 CAN-ETA:(08/21) +3(PA) FC,54% RPT,59 RK, +1462(PA) GLPI, +619 PRO\$  
 MR :101(PA), Inbr.Coeff. +5.24%, R-Value: +14%

*Fresh October 15<sup>th</sup>!*

*Milking: 29litres/day 4.0%F, 3.4%P*

*SCC: 186*

**BORN:** January 12, 2019  
**BREEDER:** Kevin & Steve Jones, Midland, ON  
**OWNER:** Kevin & Steve Jones, Midland, ON



Sire :  
**AHLEM TOPEKA RUFUS**

JEUSAM 72520562  
 CAN-GEBV:(08/21) +510M, +64F,+0.49% +36P,+0.22% RPT.90%  
 CAN-ETA:(08/21) +7 FC,78% RPT,93 RK, +1781 GLPI, +1983 PRO\$  
 MR :100, Inbr.Coeff. +6.50%, R-Value: +15%  
 28 prog class 15 VG, 11 GP, 2 G, GP+93%

**HEARTLAND MERCHANT TOPEKA-ET**

JEUSAM 67332021  
 CAN-GEBV:(08/21) +656M, +61F,+0.34% +32P,+0.07% RPT.99%  
 CAN-ETA:(08/21) +4 FC,97% RPT,76 RK, +1444 GLPI, +1719 PRO\$  
 MR :96, Inbr.Coeff. +6.32%, R-Value: +15%



**AHLEM LEGAL RUTH 37900 - EX 93-3E (7-1)**

JEUSAF 70049374  
 3 10 305 10295 480 4.66 426 4.14( NA NA NA)  
 5 1 305 10295 519 5.04 416 4.04( NA NA NA)  
 6 5 285 10882 471 4.33 408 3.75( NA NA NA)  
 6 LACT: 56040M, 2658F,4.74% 2213P,3.95%

*High Production, Award  
 Winning Pedigree!*

Dam:  
**SHADY GLEN BE BRAVE - GP 82 (2-3)**

JECANF 12358021 Rump: 82, MS: 84, F&L: 80, DS: 82  
 1 9 305 7566 358 4.73 285 3.77(331 293 328)SA  
 3 4 297 9580 505 5.27 361 3.77(303 295 301)SA  
 4 4 305 10050 488 4.86 390 3.88(296 265 302)SA  
 5 6 262 12010 642 5.35 440 3.66(337 334 326)(Proj)  
 4 LACT: 42938M, 2203F,5.13% 1641P,3.82%  
 AVG. BCA:310M, 284F, 310P +36M +25F +31P  
 CAN-EBV:(08/21) +15M, -4F,-0.05% -5P,-0.07% RPT.66%  
 CAN-ETA:(08/21) +3 FC,44% RPT,59 RK, +1223 LPI, -318 PRO\$  
 MR :99, Inbr.Coeff. +6.75%, R-Value: +13%  
 Silver Awards: AUGUST 2018, JANUARY 2020, DECEMBER 2020  
 1<sup>ST</sup> 2-YEAR OLD & GRAND CHAMPION 2018 400 PARISH SHOW

**BRIDON EXCITATION - EX 90 (2-0)**

JECANM 8572453  
 CAN-GEBV:(08/21) -594M, -27F,+0.04% -27P,-0.05% RPT.98%  
 CAN-ETA:(08/21) +5 FC,97% RPT,81 RK, +1104 GLPI, -1048 PRO\$  
 MR :100, Inbr.Coeff. +2.93%, R-Value: +14%

**CHASENA MONEY BRIGHT - VG 86 (2-11)**

JECANF 11077857  
 3 7 305 7542 336 4.46 277 3.67(258 209 250)  
 4 8 305 8536 382 4.48 301 3.53(275 223 257)  
 5 9 305 9209 439 4.77 328 3.56(280 244 262)  
 7 LACT: 53525M, 2508F,4.69% 1966P,3.67%  
 AVG. BCA:247M, 212F, 238P -9M -32F -24P  
 1 prog class 1 GP, GP+100%

- 3<sup>rd</sup> DAM 8728490 CHASENA LASER BELLA GP 82 (2-8) 1SA, 1GA
- 4<sup>TH</sup> DAM 8728461 CHASENA BELLEVUE BELLE (XVD 11M) VG 85 (2-1)
- 5<sup>TH</sup> DAM 10206565 CHASENA JOEL BONITA (XVD 10J) EX 90 (9-11) 1\*, 1LPA
- 6<sup>TH</sup> DAM 597418 CHASENA MERIT BELLE (XVD 1E) VG 85 (2-4) 2SA
- 7<sup>TH</sup> DAM 583156 MEADOW LYNN J IMPERIAL BONITA (LHZ 3C) EX (4-11) 3SA
- 8<sup>TH</sup> DAM 554500 MEADOW LYNN S G BELLE 23X (LHZ 23X) GP 83 (3-3)
- 9<sup>TH</sup> DAM 518083 MEADOW LYNN TITILE OLLIE 19R GP 83 (2-4)
- 10<sup>TH</sup> DAM 476526 MEADOW LYNN B D M OLIVIA 1J VG 88 (3-0)
- 11<sup>TH</sup> DAM 453050 MEADOW LYNN ORA VG 85 (5-10) 1\*

**Added Information:**

*Maternal Sister: Shady Glen Marcin Bolt*

1 10 305 9636 428 4.44 348 3.61(402 334 382)PA  
 2 10 305 12770 540 4.23 459 3.59(447 348 425)PA  
 4 0 143 11063 515 4.66 419 3.79(363 308 364)(Proj)  
 3 LACT: 31012M, 1384F,4.46% 1121P,3.61%  
 AVG. BCA:425M, 341F, 404P +137M +75F +108P  
 PLATINUM AWARDS: JUNE 2020, MAY 2021

# SUNSTAR ELLEN LEGACY

## JECANF 13147635 - PUREBRED

PA:(08/21) -139M, +2F,+0.12% +1P,+0.10% RPT.39%  
CAN-ETA:(08/21) -3(PA) FC,32% RPT,9 RK, +1229(PA) LPI, -22 PRO\$  
MR :104(PA), Inbr.Coeff. +6.84%, R-Value: +14%

*Senior 2-Year Old*

*Fresh November 13<sup>th</sup>, 2021*

*Nov 30/21 test day: 19kg 5.3% / 4.3%F*

*SCC 52,000.*



**BORN:** December 30, 2018  
**BREEDER:** Hugh Partridge, Midhurst, ON 705-722-0173  
**OWNER:** Paul & Lorraine Franken, Clinton, ON

*DHI tested: Johnes Negative  
"Robot Ready"*

Sire :

### HOLLYLANE LILIBET'S LEGACY - VG 85 (3-2)

JECANM 9240969  
CAN-GEBV:(08/21) -391M, -2F,+0.25% +1P,+0.22% RPT.99%  
CAN-ETA:(08/21) -2 FC,99% RPT,30 RK, +1460 GLPI, +205 PRO\$  
MR :107, Inbr.Coeff. +3.84%, R-Value: +16%  
1962 prog class 86 EX, 511 VG, 942 GP, 406 G, 17 F, GP+78%

### ROCK ELLA PERIMITER ET - EX 90 (2-7)

JECANM 139475  
CAN-GEBV:(08/21) -31M, +11F,+0.17% +17P,+0.25% RPT.99%  
CAN-ETA:(08/21) -10 FC,97% RPT,3 RK, +1135 GLPI, +22 PRO\$  
MR :97, Inbr.Coeff. +3.07%, R-Value: +19%



### WILLOA LILIBET RENAISSANCE ET - VG 89 (2-8)

JECANF 10023771  
2 3 305 7541 328 4.35 280 3.71(282 229 277)SA  
1 LACT: 8491M, 374F,4.40% 326P,3.84%  
AVG. BCA:282M, 229F, 277P +3M -7F +6P  
1 prog class 1 EX, GP+100%  
ALL CANADIAN, SENIOR TWO YR. 2000  
1ST SENIOR TWO YEAR OLD, RAWF 2000  
RESERVE INTERMEDIATE CHAMPION, RAWF 2000  
4TH SENIOR TWO YEAR OLD, WDE 2000  
1ST INTERMEDIATE YEARLING, ONTARIO SPRING SHOW 1999  
1ST INTERMEDIATE YEARLING, WWD SHOW 1999  
NOMINATED ALL CANADIAN INTERMEDIATE CALF 1998

Dam:

### JX CLOVER FARM SACADEMY ELLIE 3902{6} - G 77 (2-3)

JEUSAF 67393902 Rump: 84, MS: 73, F&L: 79, DS: 82  
1 6 305 5062 287 5.67 195 3.85(235 252 238)  
3 1 305 6738 357 5.30 266 3.95(219 215 227)  
4 3 305 7692 459 5.97 291 3.78(231 254 231)  
3 LACT: 23930M, 1371F,5.73% 937P,3.92%  
AVG. BCA:228M, 240F, 232P +7M +26F +8P  
CAN-EBV:(08/21) +114M, +5F,+0.00% +2P,-0.02% RPT.57%  
CAN-ETA:(08/21) -4 FC,29% RPT,5 RK, +984 LPI, -301 PRO\$  
MR :101, Inbr.Coeff. +8.96%, R-Value: +13%

### JX CLOVER FARMS ACADEMY 2691{5}

JEUSAM 67392691  
PA:(08/21) +930M, +5F,-0.57% +16P,-0.26% RPT.37%  
CAN-ETA:(08/21) -1(PA) FC,29% RPT,38 RK, +1101(PA) LPI, +290 PRO\$  
MR :98(PA), Inbr.Coeff. +8.44%, R-Value: +14%

3<sup>rd</sup> DAM JEUSAF 67401638 CLOVER FARMS ECLIPES ELLIE 1638 VG 88 (4-5)

4<sup>th</sup> DAM JEUSAF 67058852 CLOVER FARMS JEVON ELLIE 852 VG 88 (2-10)

5<sup>th</sup> DAM JEUSAF 112940151 D&E TRIMMER ELLIE EX 90 (4-10)

6<sup>th</sup> DAM JEUSAF 110403212 D&E HENERY ELLIE -P VG 86 (3-5)

7<sup>th</sup> DAM JEUSAF3831700 D&E MALCOLM ELLA {6} VG 86 (3-3)

8<sup>th</sup> DAM JEUSAF3607037 D&E RADIO ELLA {5} G 75 (3)

9<sup>th</sup> DAM JEUSAF3416059 D & E TRIUMPH ELLA {4} G 77 (3-1)

10<sup>th</sup> DAM JEUSAF3257918 D&E EARLS ELLA {3} GP 80 (3-9)

### CLOVER FARMS PAUL ELLIE 2315 - GP 83 (3-11)

JEUSAF 67462315  
2 8 305 8118 395 4.87 298 3.67( NA NA NA)  
1 LACT: 8118M, 395F,4.87% 298P,3.67%  
1 prog class 1 G, GP+0%

**MARI-LANE BARCELONA DAFFODIL**  
**JECANF 13279347 - PUREBRED – VG 86 (3-1)**

Rump: 81, MS: 84, F&L: 80, DS: 81  
 2 0 279 6006 317 5.28 244 4.06(228 225 244)  
 1 LACT: 6006M, 317F, 5.28% 244P, 4.06%  
 AVG. BCA: 228M, 225F, 244P -22M -21F -13P  
 CAN-EBV:(08/21) -376M, -7F, +0.16% -2P, +0.17% RPT.54%  
 CAN-ETA:(08/21) +3 FC, 40% RPT, 59 RK, +1287 LPI, +40 PRO\$  
 MR :102, Inbr.Coeff. +4.29%, R-Value: +14%

*Fresh November 15, 2021!*

**BORN:** November 19, 2018 (Senior 2-Year Old)  
**BREEDER:** Marianne Cook, Stratford, ON  
**OWNER:** Marianne Cook, Stratford, ON



**SIRE**

**FDL BARCELONA**

JECANM 109427545  
 CAN-GEBV:(08/21) +775M, +48F, +0.09% +37P, +0.10% RPT.98%  
 CAN-ETA:(08/21) +4 FC, 94% RPT, 76 RK, +1688 GLPI, +1821 PRO\$  
 MR :105, Inbr.Coeff. +7.98%, R-Value: +17%



**4<sup>TH</sup> DAM: JASPAR T T'S DOMINIQUE SUP-EX 94 (10-9)**

9 LACT: 65157, 2887, 4.43, 2327, 3.57 (218-177-201 +32M +9F +7P)  
 5 prog class 3 VG, 2 GP, GP+100%  
 NOMINATED ALL CANADIAN FOUR-YEAR OLD 1992

**DAM**

**JASPAR ROCKFORD DAKOTA - EX 90-4E (8-8)**

JECANF 11619964 Rump: 92, MS: 91, F&L: 90, DS: 90

2 4 305 4632 213 4.60 175 3.78(166 142 167)  
 3 3 277 5483 233 4.25 210 3.83(181 140 184)  
 4 5 303 8032 365 4.54 297 3.70(237 198 232)  
 5 4 305 9008 404 4.48 348 3.86(257 213 262)  
 6 5 305 7583 361 4.76 293 3.86(212 188 215)  
 7 5 305 8429 391 4.64 339 4.02(235 205 249)  
 8 5 305 9155 393 4.29 354 3.87(256 209 262)

7 LACT: 53140M, 2403F, 4.52% 2050P, 3.86%  
 AVG. BCA: 221M, 185F, 224P -18M -41F -14P  
 CAN-EBV:(08/21) -1085M, -73F, -0.23% -39P, +0.06% RPT.65%  
 CAN-ETA:(08/21) +4 FC, 37% RPT, 69 RK, +842 LPI, -1778 PRO\$  
 MR :99, Inbr.Coeff. +8.33%, R-Value: +11%  
 2 prog class 1 VG, 1 GP, GP+100%

**3<sup>rd</sup> DAM 10203893 JASPAR RENAISSANCE DAISY -ET (HCJ 3J) GP 81 (2-3)**  
**4<sup>TH</sup> DAM 547464 JASPAR T T'S DOMINIQUE (HCJ 15W) SUP-EX 94 (10-9)**  
**5<sup>TH</sup> DAM 526613 HOMERIDGE GEMINI'S DREAM 8S (SIL 8S) GP 84 (2-5)**

**JARS OF CLAY BARNABAS**

JEU SAM 67342492

CAN-GEBV:(08/21) +1270M, +46F, -0.24% +36P, -0.16% RPT.98%  
 CAN-ETA:(08/21) +4 FC, 96% RPT, 76 RK, +1500 GLPI, +1498 PRO\$  
 MR :100, Inbr.Coeff. +7.98%, R-Value: +17%

**FDL PREMIER BELLE - VG 87 (3-7)**

JECANF 107824848

1 9 305 7096 390 5.50 292 4.11(292 302 317)  
 3 2 305 8657 487 5.63 359 4.15(308 316 336)  
 4 3 288 9260 539 5.82 387 4.18(305 323 337)  
 3 LACT: 27291M, 1567F, 5.74% 1142P, 4.18%  
 AVG. BCA: 302M, 314F, 330P +45M +79F +70P  
 2 prog class 1 VG, 1 GP, GP+100%

*Production*

*Longevity &*

*Type!*

**PAULLOR JADE ROCKFORD ET**

JECANM 10956303

GPA:(08/21) -697M, -39F, +0.00% -26P, +0.04% RPT.69%  
 CAN-ETA:(08/21) +7(PA) FC, 60% RPT, 93 RK, +1245(PA) GLPI, -566 PRO\$  
 MR :97(PA), Inbr.Coeff. +5.14%, R-Value: +13%

**JASPAR COMERICA DOREEN - VG 85 (6-5) - 1\***

JECANF 8826033

4 0 305 6928 336 4.85 275 3.97(227 201 239)  
 5 3 305 8028 386 4.81 299 3.72(247 217 243)  
 6 4 305 8006 404 5.05 314 3.92(224 210 233)  
 6 LACT: 40629M, 2020F, 4.97% 1606P, 3.95%  
 AVG. BCA: 205M, 186F, 212P +11M +13F +19P  
 2 prog class 1 EX, 1 GP, GP+100%  
 1 STAR BROOD COW, AUGUST 2021

## SWISSBELL PURITAN VIDAL JECANF 13131739 - PUREBRED - VG 86 (2-3)

Rump: 85, MS: 86, F&L: 85, DS: 88  
2 1 305 7270 367 5.05 262 3.60(272 257 259)  
1 LACT: 7292M, 368F, 5.05% 263P, 3.61%  
AVG. BCA: 272M, 257F, 259P +13M +20F +8P  
CAN-EBV:(08/21) +844M, +40F, -0.04% +26P, -0.07% RPT.52%  
CAN-ETA:(08/21) +4 FC, 40% RPT, 69 RK, +1585 LPI, +1580 PRO\$  
MR :102, Inbr.Coeff. +7.53%, R-Value: +16%

*Milky Senior 2-Year Old  
Fresh October 27<sup>th</sup>!*



**BORN:** September 30, 2018  
**BREEDER:** Walter & Marlies Kaehli, Grand Valley, ON  
**OWNER:** Han & Irma Brink, Grand Valley, ON

*Currently Milking: 31 Litres/day 3.8%F, 3.12%P  
SCC: 80,000*

### SIRE

#### BW PURITAN

JEUSAM 118823784  
CAN-GBV:(08/21) +877M, +62F, +0.20% +28P, -0.06% RPT.89%  
CAN-ETA:(08/21) +4 FC, 77% RPT, 76 RK, +1731 GLPI, +1986 PRO\$  
MR :101, Inbr.Coeff. +13.77%, R-Value: +15%  
46 prog class 11 VG, 29 GP, 6 G, GP+87%

### BW VERTEX-ET

JEUSAM 118017060  
GMACE:(08/21) +956M, +45F, -0.07% +31P, -0.09% RPT.86%  
CAN-ETA:(08/21) +6(MACE) FC, 78% RPT, 88 RK, +1369(MACE) GLPI, +1572 PRO\$  
MR :96(MACE), Inbr.Coeff. +6.77%, R-Value: +16%

### BW RENEGADE PEGGY IF107-ET - GP 73 (3-7)

JEUSAF 117940138  
2 LACT: 13646M, 752F, 5.51% 505P, 3.70%

*Production Packed Pedigree!  
10 Generations of VG & EX, Production  
Award Winning Dams!*

### DAM

#### SWISSBELL VAL VISTA - GP 81 (2-1)

JECANF 12514206 Rump: 83, MS: 82, F&L: 76, DS: 82  
1 11 305 8146 363 4.46 304 3.73(331 273 327)SA  
1 LACT: 8688M, 391F, 4.50% 323P, 3.72%  
AVG. BCA: 331M, 273F, 327P +41M +10F +37P  
CAN-EBV:(08/21) +796M, +14F, -0.33% +26P, -0.05% RPT.60%  
CAN-ETA:(08/21) +0 FC, 46% RPT, 29 RK, +1364 LPI, +1048 PRO\$  
MR :103, Inbr.Coeff. +9.06%, R-Value: +18%  
1 prog class 1 VG, GP+100%  
Silver Award, NOVEMBER 2019

### ALL LYNNS LOUIE VALENTINO-ET

JEUSAM 116279413  
CAN-GBV:(08/21) +1495M, +28F, -0.60% +37P, -0.25% RPT.99%  
CAN-ETA:(08/21) +4 FC, 98% RPT, 76 RK, +1467 GLPI, +1627 PRO\$  
MR :103, Inbr.Coeff. +8.61%, R-Value: +20%

### SWISSBELL LEGACY VISTA - VG 85 (4-11)

JECANF 10943272  
3 9 283 6342 337 5.31 243 3.83(194 190 196)  
4 8 264 7334 400 5.45 284 3.87(214 215 218)  
5 7 295 7787 458 5.88 311 3.99(228 245 239)  
5 LACT: 32623M, 1785F, 5.47% 1248P, 3.83%  
AVG. BCA: 208M, 210F, 209P -54M -26F -39P  
3 prog class 1 VG, 2 GP, GP+100%

3<sup>RD</sup> DAM 8942948 SWISSBELL SENIOR VIVA GP 80 (3-3) 3SA, 1GA  
4<sup>TH</sup> DAM 8704429 SWISSBELL PARAMOUNT VIRGILIA VG 85 (4-9) 3GA, 1SA  
5<sup>TH</sup> DAM 8420001 SWISSBELL LUTHER VIRTUE VG 85 (5-2) 3\*, 2SA  
6<sup>TH</sup> DAM 587516 SWISSBELL MERIT VANESSA (YXL 10C) VG 86 (3-7) 3GA, 1LPA  
7<sup>TH</sup> DAM 556124 SWISSBELL SILVER VIRTUE ET (YXL 54X) EX (6-5) 2\*, 2SA  
8<sup>TH</sup> DAM 491994 SWISSBELL F VIRGINIA 24L (YXL 24L) SUP-EX (10-2) 3\*,  
9<sup>TH</sup> DAM 468954 SWISSBELL ELLA VIRGINIA EX 91 (4-10)  
10<sup>TH</sup> DAM 408799 SWISSBELL VIRGINIA SUP-EX 90 (12-7)  
11<sup>TH</sup> DAM 336867 BELMONT JESTER VIRGINIA SUP-EX (10-1)2\*

# ENNISKILLEN ANDREAS DAISY 531

## JECANF 13283648 - PUREBRED

PA:(08/21) -522M, -53F,-0.34% -32P,-0.14% RPT.38%  
CAN-ETA:(08/21) +5(PA) FC,31% RPT,77 RK, +866(PA) LPI, -1231 PRO\$  
MR :97(PA), Inbr.Coeff. +5.93%, R-Value: +10%

*The complete package of style  
and production!*



**TATTOO:** 31F JWG  
**BORN:** September 08, 2018  
**BREEDER:** Enniskillen Jerseys, Enniskillen, ON  
**OWNER:** Enniskillen Jerseys, Enniskillen, ON

*Senior 2-Year Old  
Fresh October 15<sup>th</sup>, 2021*

### SIRE

#### SUNSET CANYON ANDREAS

JEUSAM 117597125  
CAN-GEV:(08/21) -1031M, -50F,+0.05% -38P,+0.03% RPT.91%  
CAN-ETA:(08/21) +8 FC,81% RPT,94 RK, +1039 GLPI, -1401 PRO\$  
MR :97, Inbr.Coeff. +3.52%, R-Value: +9%  
77 prog class 2 EX, 31 VG, 39 GP, 5 G, GP+94%

### HOLLYLANE R RESPONSE-ET

JEUSAM 660024  
USA:(04/14)-870M -24F 0.09% -28P 0.02% RPT:92  
PTAT(04/14)1.20 RPT:90



### SUNSET CANYON JADE ANNA - EX 94 (8-2)

JEUSAF 112592581  
5 LACT: 44500M, 2268F,5.10% 1653P,3.71%

*9 Excellent Dams  
throughout the pedigree!*

### Mat.Sister to 2<sup>nd</sup> Dam: Enniskillen Tequila R Daisy SUP-EX 94-5E (10-2) 2\*

7 LACT: 59932M, 3178F,5.30% 2393P,3.99% (255-246-264P +24 +41 +23)  
NOMINATED ALL CANADIAN FIVE YEAR OLD, 2016

### DAM

#### ENNISKILLEN REWARD DAISY 409 - GP 81 (3-1)

JECANF 12038727 Rump: 83, MS: 81, F&L: 77, DS: 86  
2 10 305 7284 282 3.87 262 3.60(261 184 247)  
4 0 293 7413 309 4.17 261 3.52(231 176 216)  
3 LACT: 19580M, 814F,4.16% 691P,3.53%  
AVG. BCA:246M, 180F, 232P +22M -36F -3P  
CAN-EBV:(08/21) -12M, -57F,-0.74% -25P,-0.31% RPT.62%  
CAN-ETA:(08/21) +2 FC,42% RPT,49 RK, +725 LPI, -1109 PRO\$  
MR :98, Inbr.Coeff. +4.20%, R-Value: +10%

#### 3<sup>rd</sup> DAM 8800621 ENNISKILLEN REMAKE DAISY 21P (21P) SUP-EX 90 (11-9) 2\*

#### 4<sup>TH</sup> DAM 10213631 ENNISKILLEN RESPECT DAISY (JWG 2L) SUP-EX 91 (11-8)

#### 5<sup>TH</sup> DAM 606446 ENNISKILLEN JUNO ASY (JWG 21F) SUP-EX 91 (12-9) 3\*

#### 6<sup>TH</sup> DAM 583707 ENNISKILLEN KNIGHT ASY (JWG 4C) GP 83 (3-3)

#### 7<sup>TH</sup> DAM 539633 ENNISKILLEN TITLE WARD ASY (JWG 21U) SUP-EX (10-5)

#### 8<sup>TH</sup> DAM 512198 ENNISKILLEN FORWARD FANTASY SUP-EX (10-2)

#### 9<sup>TH</sup> DAM 460670 ENNISKILLEN MILE FANTASY EX 91 (4-11)

#### 10<sup>TH</sup> DAM 440202 ENNISKILLEN MERIT FANTASY EX 90 (5-3) 1\*

### RAPID BAY REWARD ET

JECANM 104411800  
CAN-EBV:(08/21) -1380M, -84F,-0.19% -55P,-0.04% RPT.89%  
CAN-ETA:(08/21) +3 FC,76% RPT,70 RK, +496 LPI, -2086 PRO\$  
MR :99, Inbr.Coeff. +13.62%, R-Value: +7%

### ENNISKILLEN SC OF REM DAISY - EX 90-4E (8-10)

JECANF 9532449  
5 11 305 10065 426 4.23 362 3.60(295 230 281)SA  
7 3 305 11086 403 3.64 402 3.63(339 229 324)SA  
8 4 305 11833 483 4.08 403 3.41(342 261 308)SA  
7 LACT: 77894M, 3209F,4.12% 2837P,3.64%  
AVG. BCA:295M, 220F, 279P +78M +29F +52P  
3 prog class 1 EX, 1 VG, 1 GP, GP+100%  
3RD JUNIOR 3 YR OLD, ONTARIO SUMMER SHOW 2010  
Lifetime Production Award, AUGUST 2017  
Silver Award, DECEMBER 2016  
Silver Award, JULY 2015

**JL IRWIN SKYLIGHT (FEMALE)**  
**JECANF 8809899 - PUREBRED - VG 85 (2-7)**

Rump: 84, MS: 86, F&L: 84, DS: 85  
 PA:(08/21) +302M, -2F,-0.22% +8P,-0.03% RPT.42%  
 CAN-ETA:(08/21) +7 FC,44% RPT,90 RK, +1466(PA) LPI, +625 PRO\$  
 MR :101(PA), Inbr.Coeff. +7.15%, R-Value: +17%

***VG as a 2-Year Old  
 and Due January 20<sup>th</sup> to VIP!***



**TATTOO:** JLR 48F  
**BORN:** September 05, 2018  
**BREEDER:** Jordan & Lucas Raymer, Bright, ON  
**OWNER:** Alan & Julie Cunnington, Caledon, ON

**SIRE**  
**ALL LYNNS VALENTINO IRWIN-ET**

JEUSAM 117423084  
 CAN-GEV:(08/21) +866M, +21F,-0.30% +23P,-0.13% RPT.99%  
 CAN-ETA:(08/21) +7 FC,97% RPT,93 RK, +1710 GLPI, +1182 PRO\$looooo  
 MR :107, Inbr.Coeff. +11.25%, R-Value: +20%  
 431 prog class 50 EX, 164 VG, 186 GP, 29 G, 2 F, GP+93%

**ALL LYNNS LOUIE VALENTINO-ET**

JEUSAM 116279413  
 CAN-GEV:(08/21) +1495M, +28F,-0.60% +37P,-0.25% RPT.99%  
 CAN-ETA:(08/21) +4 FC,98% RPT,76 RK, +1467 GLPI, +1627 PRO\$  
 MR :103, Inbr.Coeff. +8.61%, R-Value: +20%



**JARS OF CLAY IATOLA 16710 2751 - VG 87 (2-8)**

JEUSAF 67142751  
 1 LACT: 9195M, 420F,4.57% 330P,3.59%  
 1 prog class 1 VG, GP+100%

***From the "Imperial Snow" Family  
 and backed by 8 generations  
 of VG & EX dams!***

**5<sup>TH</sup> DAM: BRI-LIN IMPERIAL SNOW VG 86 (4-9) 11\*, SA, LPA**  
 8 LACT: 62747, 3383,5.39 2602,4.15 (207-206-225 -12M +7F -2P)  
 18 prog class 9 EX, 6 VG, 3 GP, GP+100%

**DAM**  
**JL DRAGON'S STARBRIGHT - VG 87 (4-2)**

JECANF 8809888 Rump: 87, MS: 87, F&L: 87, DS: 88  
 1 8 305 5540 261 4.71 219 3.95(246 218 258)  
 2 10 295 6867 345 5.02 276 4.02(246 226 260)  
 3 10 305 6833 327 4.79 282 4.13(225 195 245)  
 4 10 305 7829 353 4.51 324 4.14(245 201 268)  
 5 11 49 8076 381 4.72 301 3.73(245 212 241)(Proj)  
 5 LACT: 29079M, 1382F,4.75% 1175P,4.04%  
 AVG. BCA:241M, 210F, 258P +3M -12F +15P  
 CAN-EBV:(08/21) -262M, -25F,-0.15% -6P,+0.08% RPT.67%  
 CAN-ETA:(08/21) +5 FC,45% RPT,77 RK, +1175 LPI, -167 PRO\$  
 MR :95, Inbr.Coeff. +5.60%, R-Value: +13%  
 2 prog class 2 VG, GP+100%

**GOLDEN TOPEKA DRAGON ET**

JECANM 11664219  
 CAN-GEV:(08/21) -382M, +5F,+0.35% -9P,+0.08% RPT.97%  
 CAN-ETA:(08/21) +5 FC,92% RPT,81 RK, +1305 GLPI, +176 PRO\$  
 MR :97, Inbr.Coeff. +6.00%, R-Value: +15%

**JL ACTION STACY - SUP-EX 90-5E (11-5) - 3\***

JECANF 8809874  
 6 0 305 8814 325 3.69 340 3.86(256 173 260)  
 7 3 305 9281 347 3.74 346 3.73(252 178 247)  
 9 5 305 8783 302 3.44 325 3.70(254 166 248)  
 9 LACT: 74743M, 2807F,3.76% 2829P,3.78%  
 AVG. BCA:241M, 168F, 239P +13M -45F +8P  
 7 prog class 3 EX, 3 VG, 1 GP, GP+100%  
 3 STAR BROOD COW, FEBRUARY 2020

**3<sup>RD</sup> DAM 8809869 JL HIRED GUN'S SIERRA (JLR 18T) EX 90 (8-6)**  
**4<sup>TH</sup> DAM 8809857 BRI-LIN REGAL SALMA -ET (JLR 6P) VG 87 (5-5)**  
**5<sup>TH</sup> DAM 569732 BRI-LIN IMPERIAL SNOW (RLJ 02Z) VG 86 (4-9)11\*, SA, LPA**  
**6<sup>TH</sup> DAM 519725 DIARWOOD SILVER SNOWBALL 5S (WJE 5S) VG 85 (3-5)**  
**7<sup>TH</sup> DAM 477616 DIARWOOD JULIE SPOT 3J VG 86 (3-8)**  
**8<sup>TH</sup> DAM 463837 DIARWOOD SHELTA'S BEAUTY VG 86 (2-8)**

# RIVERWAY TEQUILA RADISH JECANF 13176817 - PUREBRED - GP 84 (2-7)

Rump: 84, MS: 85, F&L: 84, DS: 83  
2 2 278 7460 411 5.51 292 3.91(275 283 284)  
1 LACT: 7460M, 411F, 5.51% 292P, 3.91%  
AVG. BCA:275M, 283F, 284P +2M +12F +4P  
CAN-EBV:(08/21) -134M, +24F, +0.43% +3P, +0.11% RPT.51%  
CAN-ETA:(08/21) +9 FC, 39% RPT, 97 RK, +1421 LPI, +836 PRO\$  
MR :95, Inbr.Coeff. +4.72%, R-Value: +11%

*Senior 2-Year Old*

*Fresh November 8, 2021*

*Tested 14 days fresh - 30kg 5.1F 3.7P.*

*Previous lactation SCC was 51,000*



**BORN:** September 01, 2018  
**BREEDER:** Riverway Farm, Elora, ON 519-846-1019 SHAWN/JENNIFER  
**OWNER:** Riverway Farm, Elora, ON 519-846-1019 SHAWN/JENNIFER

Sire :

## TOWER VUE PRIME TEQUILA-ET

JEUSAM 114816452  
CAN-GEBV:(08/21) -971M, -22F, +0.39% -28P, +0.14% RPT.99%  
CAN-ETA:(08/21) +13 FC, 97% RPT, 99 RK, +1082 GLPI, -365 PRO\$  
MR :92, Inbr.Coeff. +2.15%, R-Value: +9%  
807 prog class 131 EX, 408 VG, 224 GP, 42 G, 2 F, GP+95%

## GIL-BAR SPARKLER PRIMETIME

JEUSAM 663520  
PA:(08/21) -1579M, -58F, +0.38% -50P, +0.18% RPT.35%  
CAN-ETA:(08/21) -13(PA) FC, 8% RPT, 0 RK, +411(PA) LPI, -2660 PRO\$  
MR :102(PA), Inbr.Coeff. +2.26%, R-Value: +4%

## PLEASANT NOOK SAMBO TEAL - EX 94-6E (7-6)

JECANF 10202602  
6 LACT: 50746M, 2836F, 5.59% 1784P, 3.52%  
1 prog class 1 EX, GP+100%

*8 Generations of VG & EX Dams  
Throughout the Pedigree*

Dam:

## RIVERWAY DRAGON RADICAL - GP 83 (1-11)

JECANF 12696148 Rump: 85, MS: 82, F&L: 84, DS: 83  
1 10 258 5237 307 5.86 206 3.93(216 234 224)  
1 LACT: 5237M, 307F, 5.86% 206P, 3.93%  
AVG. BCA:216M, 234F, 224P -26M -9F -22P  
CAN-EBV:(08/21) -63M, +25F, +0.39% +3P, +0.07% RPT.57%  
CAN-ETA:(08/21) +4 FC, 40% RPT, 69 RK, +1434 LPI, +738 PRO\$  
MR :97, Inbr.Coeff. +5.11%, R-Value: +13%  
1 prog class 1 GP, GP+100%

## GOLDEN TOPEKA DRAGON ET

JECANM 11664219  
CAN-GEBV:(08/21) -382M, +5F, +0.35% -9P, +0.08% RPT.97%  
CAN-ETA:(08/21) +5 FC, 92% RPT, 81 RK, +1305 GLPI, +176 PRO\$  
MR :97, Inbr.Coeff. +6.00%, R-Value: +15%

## RIVERWAY REDPATH RADAR - VG 85 (2-11)

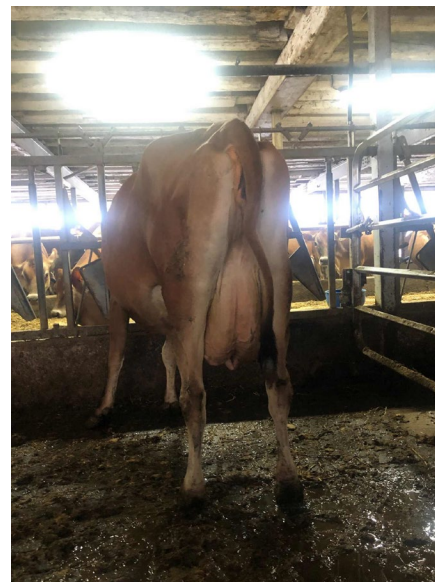
JECANF 11514161  
1 10 293 6044 323 5.34 220 3.64(237 238 226)  
2 10 305 7795 432 5.54 285 3.66(262 268 252)  
2 LACT: 13852M, 756F, 5.46% 506P, 3.65%  
AVG. BCA:250M, 253F, 239P +7M +30F +8P  
1 prog class 1 GP, GP+100%

3<sup>rd</sup> DAM 10966000 RIVERWAY IATOLA RADAR  
4<sup>TH</sup> DAM 8425495 RIVERWAY REMAKE RADAR VG 85 (3-10)  
5<sup>TH</sup> DAM 10201446 LLOLYN GENERAL RADAR 6J (PHK 6J) VG 85 (4-11)  
6<sup>TH</sup> DAM 603786 LLOLYN JUNO RADAR 10F (PHK 10F) VG 85 (2-5) 1SA  
7<sup>TH</sup> DAM 574261 LLOLYN S K RADAR 70A (PHK 70A) EX (4-9) 1SA  
8<sup>TH</sup> DAM 523750 LLOLYN GEMNI RADAR 13S (PHK 13S) EX (4-10)  
9<sup>TH</sup> DAM 500615 LLOLYN V S S RADAR VG 86 (2-7)  
10<sup>TH</sup> DAM 466012 LLOLYN M G RADAR 27F EX 91 (4-3)

**AE HOOVER BARCELONA APRIL -TW**  
**JECANF 12896062 - PUREBRED - GP 82 (2-6)**

Rump: 84, MS: 83, F&L: 82, DS: 81  
PA:(08/21) +434M, +22F,+0.00% +17P,+0.01% RPT.35%  
CAN-ETA:(08/21) +4 FC,42% RPT,69 RK, +1483(PA) LPI, +961 PRO\$  
MR :103(PA), Inbr.Coeff. +8.43%, R-Value: +16%

*Junior 3-Year Old*  
*Due January 5th, 2022 to sexed*  
*"Unique Webcam"*



**BORN:** April 02, 2018  
**BREEDER:** Abner Hoover, Millbank, ON  
**OWNER:** Abner Hoover, Millbank, ON

Sire :

**FDL BARCELONA**

JECANM 109427545  
CAN-GEBV:(08/21) +775M, +48F,+0.09% +37P,+0.10% RPT.98%  
CAN-ETA:(08/21) +4 FC,94% RPT,76 RK, +1688 GLPI, +1821 PRO\$  
MR :105, Inbr.Coeff. +7.98%, R-Value: +17%  
445 prog class 1 EX, 103 VG, 265 GP, 75 G, 1 F, GP+83%

**JARS OF CLAY BARNABAS**

JEUSAM 67342492  
CAN-GEBV:(08/21) +1270M, +46F,-0.24% +36P,-0.16% RPT.98%  
CAN-ETA:(08/21) +4 FC,96% RPT,76 RK, +1500 GLPI, +1498 PRO\$  
MR :100, Inbr.Coeff. +7.98%, R-Value: +17%

**FDL PREMIER BELLE - VG 87 (3-7)**

JECANF 107824848  
1 9 305 7096 390 5.50 292 4.11(292 302 317)  
3 2 305 8657 487 5.63 359 4.15(308 316 336)  
4 3 288 9260 539 5.82 387 4.18(305 323 337)  
3 LACT: 27291M, 1567F,5.74% 1142P,4.18%  
AVG. BCA:302M, 314F, 330P +45M +79F +70P  
2 prog class 1 VG, 1 GP, GP+100%

Dam:

**FLETCHDALE CAVAILA ANGELA**

JECANF 11548409  
1 LACT: 4855M, 224F,4.61% 165P,3.40%  
AVG. BCA:179M, 153F, 160P -29M -32F -46P  
PA:(08/21) +92M, -3F,-0.09% -2P,-0.07% RPT.42%  
CAN-ETA:(08/21) +3(PA) FC,34% RPT,59 RK, +1186(PA) LPI, -68 PRO\$  
MR :100(PA), Inbr.Coeff. +8.72%, R-Value: +14%  
1 prog class 1 GP, GP+100%

**LENCREST CAVALIA -ET - GP 82 (5-9)**

JECANM 104390550  
CAN-GEBV:(08/21) -94M, +13F,+0.24% -4P,-0.01% RPT.98%  
CAN-ETA:(08/21) +7 FC,95% RPT,93 RK, +1465 GLPI, +239 PRO\$  
MR :105, Inbr.Coeff. +11.55%, R-Value: +16%

- 3<sup>RD</sup> DAM 8957640 FLETCHDALE IMPULS TRACY GP 81 (3-4)
- 4<sup>TH</sup> DAM 8860397 FLETCHDALE SULTAN RUBY (97R) VG 86 (3-5)
- 5<sup>TH</sup> DAM 8365141 FLETCHDALE PERIMETER LILY GP 82 (2-5) 2\*
- 6<sup>TH</sup> DAM 10023592 FLETCHDALE VIS GRASSHOPPER (MZX 24G) VG 85 (3-0)
- 7<sup>TH</sup> DAM 556519 FLETCHDALE SILVER B LADY BUG (MZX 7Y) GP 81 (6-8) 3\*, 1LPA
- 8<sup>TH</sup> DAM 493387 FLETCHDALE FAITHFUL LADY (MZX 17L) SUP-EX (10-11) 2\*

9<sup>TH</sup> DAM 464413 VALLEYSTREAM B D M MARCY EX 90 (5-3)

**FLETCHDALE TALENT WILDROSE - VG 86 (3-9)**

JECANF 9812040  
2 1 305 6703 293 4.37 234 3.49(258 209 236)  
3 2 305 7295 320 4.39 259 3.55(236 190 221)  
4 2 305 5243 237 4.52 210 4.01(157 130 167)  
5 LACT: 35791M, 1643F,4.59% 1327P,3.71%  
AVG. BCA:212M, 179F, 206P -1M -9F -9P  
1 prog class 1 GP, GP+100%



**MONOAK COLTON SELENA**  
**JECANF 12863850 - PUREBRED - VG 86 (3-0)**

Rump: 88, MS: 85, F&L: 88, DS: 89  
 1 10 297 5640 333 5.90 233 4.13(221 245 240)  
 2 10 282 5747 344 5.99 244 4.25(193 214 216)  
 2 LACT: 11387M, 677F, 5.95% 477P, 4.19%  
 AVG. BCA: 207M, 230F, 228P  
 CAN-EBV:(08/21) -773M, +10F, +0.70% -23P, +0.09% RPT.56%  
 CAN-ETA:(08/21) +10 FC, 39% RPT, 98 RK, +1426 LPI, +297 PRO\$  
 MR :99, Inbr.Coeff. +9.21%, R-Value: +14%



*Fresh October 27, 2021!*

**BORN:** January 17, 2018  
**BREEDER:** Monoak Farms, Belmont, ON  
**OWNER:** Monoak Farms, Belmont, ON

**Test Nov.23<sup>rd</sup>: .7day robot aver.24Kg 6.7%F**  
**3.8%P. SCC 88,000**  
**Currently milking 30 Kg/day**

**SIRE**

**CHILLI ACTION COLTON-ET**

JEUSAM 66738335  
 CAN-GEBV:(08/21) -500M, +15F, +0.56% -8P, +0.15% RPT.98%  
 CAN-ETA:(08/21) +13 FC, 95% RPT, 99 RK, +1565 GLPI, +789 PRO\$  
 MR :96, Inbr.Coeff. +5.17%, R-Value: +15%  
 486 prog class 54 EX, 217 VG, 176 GP, 39 G, GP+92%



**Dam: Rich Valley Grandious Sangria -VG 85 (2-0)**

**DAM**

**RICH VALLEY GRANDIOUS SANGRIA - VG 85 (2-0)**

JECANF 12498962 Rump: 85, MS: 84, F&L: 87, DS: 86  
 1 10 305 5955 325 5.46 206 3.46(238 244 217)  
 3 5 305 6126 348 5.68 266 4.34(214 220 244)  
 4 6 305 7843 518 6.60 323 4.12(248 298 269)  
 4 LACT: 22422M, 1366F, 6.09% 914P, 4.08%  
 AVG. BCA: 233M, 254F, 243P  
 CAN-EBV:(08/21) -760M, +18F, +0.82% -23P, +0.09% RPT.57%  
 CAN-ETA:(08/21) +7 FC, 41% RPT, 90 RK, +1438 LPI, +84 PRO\$  
 MR :103, Inbr.Coeff. +7.89%, R-Value: +13%  
 1 prog class 1 VG, GP+100%  
 2ND JUNIOR CALF, OXFORD SOUTHWESTERN JERSEY SHOW 2016  
 5TH JUNIOR YEARLING, OXFORD-SOUTHWESTERN PARISH SHOW 2017

- 3<sup>RD</sup> DAM 7706228 RICH VALLEY VELOCITY SAVANNAH (VTK 118S) GP 83 (8-4)**
- 4<sup>TH</sup> DAM 10205970 CORNERSTONE FIRST PRIZE SARA (GMB 15J) EX 90 (4-9) 1\*, 1SA**
- 5<sup>TH</sup> DAM 598785 BOVI-LACT EXPERT SARA ET (DPS 1E) VG 85 (3-9)**
- 6<sup>TH</sup> DAM 490952 RICH VALLEY ADVANCE SARA 12L SUP-EX (11-6) 3\***
- 7<sup>TH</sup> DAM 479479 RICH VALLEY A S M SELINA VG 85 (2-6)**
- 8<sup>TH</sup> DAM 438568 GARNETLEY ROSEBOY'S SHEILA SUP-EX 90 (10-2)**
- 9<sup>TH</sup> DAM 394057 KAHQUAH KARL'S SHEILA VG 89**

**FOREST GLEN AVERY ACTION-ET**

JEUSAM 111023978  
 CAN-GEBV:(08/21) +288M, -13F, -0.37% +1P, -0.14% RPT.99%  
 CAN-ETA:(08/21) +4 FC, 97% RPT, 76 RK, +1191 GLPI, +112 PRO\$  
 MR :100, Inbr.Coeff. +3.46%, R-Value: +15%

**FAMILY HILL CONNECTION CHILLI-ET - EX 91 (3-7)**

JEUSAF 114535186  
 1 LACT: 7982M, 607F, 7.60% 315P, 3.95%  
 7 prog class 4 EX, 2 VG, 1 GP, GP+100%

*9 Generations of VG & EX Dams  
 Throughout this Pedigree!*

**RAPID BAY GRANDIOUS**

JECANM 105499925  
 CAN-GEBV:(08/21) -937M, +7F, +0.78% -24P, +0.17% RPT.96%  
 CAN-ETA:(08/21) +9 FC, 89% RPT, 96 RK, +1556 GLPI, +112 PRO\$  
 MR :105, Inbr.Coeff. +4.74%, R-Value: +14%

**RICH VALLEY GG SELINA 214 - EX 92-2E (5-5)**

JECANF 11172864  
 3 0 305 6399 371 5.80 241 3.77(210 225 208)  
 4 2 305 7686 404 5.26 290 3.77(232 224 230)  
 5 3 305 6957 375 5.39 281 4.04(199 198 213)  
 5 LACT: 38710M, 2088F, 5.39% 1525P, 3.94%  
 AVG. BCA: 206M, 204F, 206P -1M +17F +2P  
 1 prog class 1 VG, GP+100%  
 2nd, SENIOR TWO YEAR OLD - ONTARIO SPRING DISCOVERY SHOW 2014

# AE HOOVER BARCELONA AGATHA JECANF 12896052 - PUREBRED - GP 80 (2-2)

Rump: 83, MS: 78, F&L: 82, DS: 84  
PA:(08/21) +461M, +25F,+0.01% +25P,+0.09% RPT.33%  
CAN-ETA:(08/21) +1 FC,42% RPT,38 RK, +1407(PA) LPI, +928 PRO\$  
MR :101(PA), Inbr.Coeff. +7.74%, R-Value: +15%

*Senior 3-Year Old  
Fresh November 4<sup>th</sup>, 2021  
Milking 29 litres/day!*



**BORN:** October 16, 2017  
**BREEDER:** Abner Hoover, Millbank, ON  
**OWNER:** Abner Hoover, Millbank, ON

Sire :

## **FDL BARCELONA**

JECANM 109427545  
CAN-GEBV:(08/21) +775M, +48F,+0.09% +37P,+0.10% RPT.98%  
CAN-ETA:(08/21) +4 FC,94% RPT,76 RK, +1688 GLPI, +1821 PRO\$  
MR :105, Inbr.Coeff. +7.98%, R-Value: +17%  
445 prog class 1 EX, 103 VG, 265 GP, 75 G, 1 F, GP+83%

## **JARS OF CLAY BARNABAS**

JEUSAM 67342492  
CAN-GEBV:(08/21) +1270M, +46F,-0.24% +36P,-0.16% RPT.98%  
CAN-ETA:(08/21) +4 FC,96% RPT,76 RK, +1500 GLPI, +1498 PRO\$  
MR :100, Inbr.Coeff. +7.98%, R-Value: +17%

## **FDL PREMIER BELLE - VG 87 (3-7)**

JECANF 107824848  
1 9 305 7096 390 5.50 292 4.11(292 302 317)  
3 2 305 8657 487 5.63 359 4.15(308 316 336)  
4 3 288 9260 539 5.82 387 4.18(305 323 337)  
3 LACT: 27291M, 1567F,5.74% 1142P,4.18%  
AVG. BCA:302M, 314F, 330P +45M +79F +70P  
2 prog class 1 VG, 1 GP, GP+100%

Dam:

## **FLETCHDALE TYLER ANGELA**

JECANF 11548398  
2 LACT: 12790M, 610F,4.77% 516P,4.03%  
AVG. BCA:205M, 177F, 215P -8M -12F +3P  
PA:(08/21) +146M, +2F,-0.07% +13P,+0.09% RPT.35%  
CAN-ETA:(08/21) +1(PA) FC,33% RPT,38 RK, +1117(PA) LPI, +113 PRO\$  
MR :97(PA), Inbr.Coeff. +11.04%, R-Value: +13%  
3 prog class 3 GP, GP+100%

## **LENCREST TYLER -ET - EX 92 (7-1)**

JECANM 102944847  
CAN-GEBV:(08/21) -200M, -11F,-0.01% +4P,+0.14% RPT.98%  
CAN-ETA:(08/21) +3 FC,95% RPT,70 RK, +1033 GLPI, -72 PRO\$  
MR :96, Inbr.Coeff. +3.75%, R-Value: +13%

- 3<sup>RD</sup> DAM 8957640 FLETCHDALE IMPULS TRACY GP 81 (3-4)
- 4<sup>TH</sup> DAM 8860397 FLETCHDALE SULTAN RUBY (97R) VG 86 (3-5)
- 5<sup>TH</sup> DAM 8365141 FLETCHDALE PERIMETER LILY GP 82 (2-5) 2\*
- 6<sup>TH</sup> DAM 10023592 FLETCHDALE VIS GRASSHOPPER (MZX 24G) VG 85 (3-0)
- 7<sup>TH</sup> DAM 556519 FLETCHDALE SILVER B LADY BUG (MZX 7Y) GP 81 (6-8) 3\*, 1LPA
- 8<sup>TH</sup> DAM 493387 FLETCHDALE FAITHFUL LADY (MZX 17L) SUP-EX (10-11) 2\*
- 9<sup>TH</sup> DAM 464413 VALLEYSTREAM B D M MARCY EX 90 (5-3)

## **FLETCHDALE BLACKSTONE XACY - GP 82 (2-8)**

JECANF 10990358  
2 2 95 4921 267 5.43 181 3.68(183 185 177)(Proj)  
1 LACT: 1956M, 102F,5.21% 71P,3.63%

**AE HOOVER JOEL LISA**  
**JECANF 12896050 - PUREBRED - GP 80 (2-2)**

Rump: 84, MS: 78, F&L: 81, DS: 85  
PA:(08/21) -268M, -12F,+0.02% -3P,+0.09% RPT.35%  
CAN-ETA:(08/21) +5 FC,44% RPT,77 RK, +1120(PA) LPI, -186 PRO\$  
MR :95(PA), Inbr.Coeff. +6.72%, R-Value: +15%

*Fresh September 7<sup>th</sup>, 2021!*

*Milking: 28 litres/day*

*Bred November 29<sup>th</sup> to "Tekashi"*



**BORN:** September 30, 2017  
**BREEDER:** Abner Hoover, Millbank, ON  
**OWNER:** Abner Hoover, Millbank, ON

Sire :

**GUIMO JOEL ET - VG 85 (6-0)**

JECANM 106797223  
CAN-GEBV:(08/21) -514M, -20F,+0.10% -8P,+0.16% RPT.99%  
CAN-ETA:(08/21) +14 FC,98% RPT,99 RK, +1305 GLPI, -254 PRO\$  
MR :95, Inbr.Coeff. +4.08%, R-Value: +17%  
1415 prog class 95 EX, 602 VG, 594 GP, 121 G, 3 F, GP+91%

**TOLLENAARS IMPULS LEGAL 233-ET**

JEUSAM 61929249  
CAN-GEBV:(08/21) +773M, +18F,-0.28% +32P,+0.03% RPT.99%  
CAN-ETA:(08/21) +4 FC,97% RPT,76 RK, +1568 GLPI, +1321 PRO\$  
MR :101, Inbr.Coeff. +1.84%, R-Value: +15%



**FERMAR PARAMOUNT JOY - EX 94-2E (7-3) - 14\***

JECANF 104419880  
2 0 305 7170 356 4.97 290 4.04(288 268 309)GA  
3 1 305 9707 506 5.21 396 4.08(345 329 370)PA  
4 LACT: 39668M, 2066F, 5.21% 1580P, 3.98%  
AVG. BCA:305M, 287F, 318P +59M +62F +66P  
15 prog class 7 EX, 7 VG, 1 GP, GP+100%  
1ST LIFETIME CHEESE PRODUCTION COW, WORLD DAIRY EXPO 2014  
2ND JUNIOR 2 YR OLD, EXPO QUEBEC 2009  
1ST JUNIOR 2 YR OLD, BBQ BELLECHASSE 2009  
RESERVE ALL QUEBEC JUNIOR 2 YR OLD 2009  
GRAND CHAMPION - EXPO BBQ BELLECHASSE 2014  
HON MENTION ALL CANADIAN MATURE COW 2014

Dam:

**FLETCHDALE IPOD TINSEL-Z - GP 83 (2-4)**

JECANF 11548378 Rump: 86, MS: 83, F&L: 83, DS: 83  
3 LACT: 17721M, 945F, 5.33% 732P, 4.13%  
AVG. BCA:195M, 189F, 212P -2M +9F +10P  
PA:(08/21) -21M, -5F,-0.06% +1P,+0.02% RPT.42%  
CAN-ETA:(08/21) -4 FC,46% RPT,5 RK, +941(PA) LPI, -300 PRO\$  
MR :95(PA), Inbr.Coeff. +7.54%, R-Value: +14%  
2 prog class 2 GP, GP+100%

**LENCREST I POD -ET - EX 90 (4-9)**

JECANM 104390545  
CAN-GEBV:(08/21) -300M, -6F,+0.13% -6P,+0.07% RPT.98%  
CAN-ETA:(08/21) -2 FC,97% RPT,30 RK, +989 GLPI, -268 PRO\$  
MR :93, Inbr.Coeff. +9.14%, R-Value: +17%

**3<sup>rd</sup> DAM 8860381 FLETCHDALE NANGKITA'S PARIS VG 85 (4-10)**

**4<sup>TH</sup> DAM /8365145 FLETCHDALE PERIMETER LORI GP 81 (3-5) 1SA**

**5<sup>TH</sup> DAM 10004006 FLETCHDALE DYNAMO FLOPSY (MZ 27F) GP 81 (2-6)**

**6<sup>TH</sup> DAM 566780 VALLEYSTREAM JUNO JERRIE (PAI 29Z) VG 86 (4-7) 2\***

**7<sup>TH</sup> DAM 545501 VALLEYSTREAM JUSTIN JEANIE 39W (PAI 39W) GP 81 (1-11) 1SA**

**8<sup>TH</sup> DAM 526652 VALLEYSTREAM SILVER JEAN 31S VG 85 (2-0) 9\*, 1SA, 1GA, 1LPA**

**9<sup>TH</sup> DAM 456456 VALLEYSTREAM RICKY'S JEAN VG 89 (2-1) 2\***

**10<sup>TH</sup> DAM 437158 CEDAR CREEK REGENT'S ROSIE EX 90**

**FLETCHDALE BEACON TINSEL - GP 80 (3-7)**

JECANF 9812003  
2 3 305 7242 310 4.28 270 3.73(271 217 267)  
3 6 299 8822 372 4.22 322 3.65(301 231 290)SA  
4 5 305 7466 346 4.63 293 3.92(239 202 248)  
4 LACT: 29123M, 1295F, 4.45% 1109P, 3.81%  
AVG. BCA:270M, 217F, 268P +40M +22F +38P  
2 prog class 2 GP, GP+100%  
Silver Award, JUNE 2012

# ENNISKILLEN BEAUTIFUL DI JECANF 12462756 - PUREBRED - EX 90 (4-7)

Rump: 90, MS: 92, F&L: 86, DS: 89  
1 11 305 4963 258 5.20 201 4.05(195 190 207)  
3 1 305 6099 298 4.89 226 3.71(203 183 198)  
3 LACT: 14623M, 738F, 5.05% 566P, 3.87%  
AVG. BCA:199M, 187F, 203P -34M -25F -35P  
CAN-EBV:(08/21) -844M, -23F, +0.29% -29P, +0.03% RPT.58%  
CAN-ETA:(08/21) +6 FC, 48% RPT, 85 RK, +1141 LPI, -956 PRO\$  
MR :103, Inbr.Coeff. +6.93%, R-Value: +13%

6<sup>th</sup> Senior 3-Year Old, Ontario Summer Show 2019  
2<sup>nd</sup> Senior 2-Year Old, Ontario Summer Show 2018

**5-Year Old**  
**Fresh November 25<sup>th</sup>, 2021!**

**TATTOO:** JWG 14D  
**BORN:** January 28, 2016  
**BREEDER:** Enniskillen Jerseys, Enniskillen, ON  
**OWNER:** Enniskillen Jerseys, Enniskillen, ON

Sire :

## COMESTAR JDF BEAUTIFULL ET - G 78 (5-3)

JECANM 105752959  
CAN-GEV:(08/21) -507M, +9F, +0.48% +0P, +0.27% RPT.98%  
CAN-ETA:(08/21) +6 FC, 95% RPT, 88 RK, +1429 GLPI, +183 PRO\$  
MR :103, Inbr.Coeff. +6.80%, R-Value: +16%  
475 prog class 19 EX, 152 VG, 235 GP, 68 G, 1 F, GP+85%

**9 Generations of VG & EX  
Production Award Winning  
Dams!**

Dam:

## ENNISKILLEN COMERICA DI

JECANF 11610673  
1 LACT: 1905M, 108F, 5.67% 69P, 3.62%  
PA:(08/21) -797M, -25F, +0.23% -30P, +0.02% RPT.40%  
CAN-ETA:(08/21) +5(PA) FC, 36% RPT, 77 RK, +1009(PA) LPI, -1163 PRO\$  
MR :102(PA), Inbr.Coeff. +10.97%, R-Value: +11%  
1 prog class 1 EX, GP+100%

3<sup>rd</sup> DAM 10209616 ENNISKILLEN RESPECT DI (JWG 7K) SUP-EX 92 (15-0) 3\*, 2LPA  
4<sup>TH</sup> DAM 580266 ENNISKILLEN COMMANDO DI (JWG 13B) EX 90 (7-11) 1LPA  
5<sup>TH</sup> DAM 560834 ENNISKILLEN G S DI (JWG 20Y) EX 90 (8-8)  
6<sup>TH</sup> DAM 544427 ENNISKILLEN BELLRINGER DI (JWG 10W) VG 86 (3-9)  
7<sup>TH</sup> DAM 518536 ENNISKILLEN DISTINCT FANTASY EX (6-5)  
8<sup>TH</sup> DAM 474694 ENNISKILLEN DREAMER FANTASY 3H EX 91 (4-2) 1\*  
9<sup>TH</sup> DAM 440202 ENNISKILLEN MERIT FANTASY EX 90 (5-3) 1\*  
10<sup>TH</sup> DAM 417597 ENNISKILLEN FLASH FANTASY EX 91 1\*



## SC GOLDDUST PARAMOUNT IATOLA-ET

JEUSAM 112118277  
CAN-GEV:(08/21) +204M, +10F, +0.00% +8P, +0.01% RPT.99%  
CAN-ETA:(08/21) +5 FC, 98% RPT, 81 RK, +1503 GLPI, +700 PRO\$  
MR :103, Inbr.Coeff. +6.60%, R-Value: +20%

## LENCREST FPRIZE BELLE - VG 88 (3-1) - 5\*

JECANF 101959115  
2 7 305 9514 437 4.59 366 3.85(350 295 355)PA  
1 LACT: 11964M, 576F, 4.81% 479P, 4.00%  
AVG. BCA:350M, 295F, 355P +186M +144F +191P  
5 prog class 2 EX, 2 VG, 1 GP, GP+100%  
GRAND CHAMPION, EXPO DE CHICOUTIMI 2006  
5 STAR BROOD COW, MAY 2018  
Platinum Award, APRIL 2007

## BRIDON REMAKE COMERICA -ET - EX 90 (3-3)

JECANM 8422994  
CAN-GEV:(08/21) -1094M, -28F, +0.40% -42P, +0.00% RPT.99%  
CAN-ETA:(08/21) +10 FC, 98% RPT, 97 RK, +1039 GLPI, -1586 PRO\$  
MR :105, Inbr.Coeff. +4.92%, R-Value: +11%

## ENNISKILLEN RESSURECTION DI - VG 86 (2-6)

JECANF 7727849  
2 2 304 5379 274 5.09 225 4.18(217 204 239)  
2 LACT: 8504M, 415F, 4.88% 346P, 4.07%  
AVG. BCA:217M, 204F, 239P +15M +22F +27P  
1 prog class 1 VG, GP+100%  
2ND JUNIOR 2 YR OLD, QUINTE CHAMPIONSHIP SHOW 2008  
5TH JUNIOR YEARLING, ROYAL WINTER FAIR 2007