



March 26 & 27, 2021

**100% of Proceeds Benefiting
Children's Health Foundation of London**



CattleClub.com

Welcome everyone to the first Calves for a Cause! We are extremely excited to bring you this sale. For those who have followed Brooks' story through our social media pages, we hope that we have made it very clear how much the London's Children's Hospital means to our family and many other families. For those who are not familiar with our story, Brooks was born October 28th, 2019 and although the nurses worked to stabilize his breathing at birth, we thought he was perfectly healthy. Fifteen hours after he was born everything changed and he was rushed from Woodstock General Hospital to the NICU at the London Children's Hospital where they immediately began testing. We were very quickly surrounded by the best care team we could have asked for. Within days, Brooks had made many impressions and quickly had two of the best core nurses we could have imagined. After three weeks of endless testing which hadn't brought any answers, it was finally discovered that he had Hirschsprungs disease. This diagnosis and subsequent ileostomy surgery was suppose to be the end of our stay and our ticket home but God had other plans.



A few days after his ileostomy surgery his previously undiagnosed respiratory symptoms returned and seemed to worsen. At this time his genetics were sent to the United States for analysis and it was confirmed that Brooks had Congenital Central Hypoventilation Syndrome(CCHS) an incredibly rare disorder that affects the brains ability to measure CO2 levels. About 1300 people worldwide live with this disease which can also affect many or all autonomic functions of the body. Brooks then underwent tracheostomy surgery and as a result our 2.5 month stay in the NICU was over and began our stay in the Pediatric Critical Care Unit where they have the equipment to care for Brooks. The next five weeks were filled with us learning how to care for Brooks and preparing our life for him. Once again we quickly fell in love with his nurses and care team in the PCCU and were so thankful for the expertise of his lead respirologist who ensured Brooks had the best treatment plan possible.



Brooks has had many readmissions since his initial stay and each time he is inpatient he is showered with love from everyone in the unit. With our overwhelming gratitude for what the hospital has done for our family we decided we wanted to find away to give back, which has led us to the idea of Calves for a Cause!

A few quick THANK YOU'S:

First and foremost to the consigners, from day one every single consignor has been generous and supportive of our idea and for that we will be forever grateful.

Thank you to our sponsors and media outlets who have come alongside us to help promote our sale (Unique Design and Marketing, Cowsmopolitan, and Progressive Dairyman). A big thanks to Kim Rae at Unique Design and Marketing for putting together our videos! Without these resources we wouldn't be able to get the exposure our consignors deserve. A Special Thanks to Russell Gammon who has become a special friend to our family over the last couple of years. Russell was the first person we contacted about the sale and his encouragement and guidance pushed us to make the sale public.

A special thanks to Julie Ashton from Cowsmopolitan, who contacted us the day we made the sale public and has been in close contact with us ever since. Her enthusiasm for our sale and marketing/advertising expertise has been an invaluable asset.

Last but not least to Nick Sarbacker from CattleClub.com who has donated the use of his online sales platform to allow us to send every dollar possible to the Children's Hospital.

With all that being said, thank you to the buyers of the cattle in our sale! Thank you for your confidence and we wish you good luck with your purchases and hope the calves perform extremely well in their new homes!

Darryl & Sarah Markus & Family



We are Nathan and Kate Wade. We own and operate Hird's Jerseys. We are married and have 4 daughters. We have been truly blessed, but have had some scary moments that have been quite difficult. We have been lucky enough to have London's Children Hospital on our side.

When our second daughter Lexi was 6 weeks old, she had a fainting spell. Long story short, we ended up in London Hospital for 10 days. Through the many tests that our tiny baby endured, we found out that she had 5 holes in her heart. Through tears we listened as the doctors told us that the blood in her heart was pooling and not circulating probably. Her lungs were filling with fluid and she was in congested heart failure.

As you can imagine this was very difficult to hear, but it was not the end. They started her on medication and she needed a feeding tube. Through more testing we found out that she also had congenital scoliosis (but that's a whole other story). Over the next 10 days, there was many scary moments and a lot of information was given to us. It was so overwhelming!



The staff at the hospital always went out of our way to make sure that not only Lexi was doing well, but that we were as well. We were sleep deprived, exhausted and emotionally drained. With every step the staff was there to keep our baby as safe and healthy as possible. We came home from the hospital after the 10 days. Lexi was still on her feeding tube and we had many doctors appointments to follow, including to this day.

At the age of 3, she had a 12 hour surgery at Sick Kids Hospital in Toronto to correct her spine. She still wears a back brace to this day. Fast forward 10 years. Lexi is doing well! But then things take a turn for the worse. Lexi starts complaining about intense stomach pain. This goes on for months.

We have no idea what is going on, but with the doctors help in the Gastroenterology Department at the London Hospital we find out that she has Crohn's Disease. This came as a big blow to Lexi's life. She now has to go to the hospital every 5 weeks and get an infusion intravenous treatment done. This procedure takes about 5 hours every time so goes there. The nurses on the PMDU floor are amazing and they always seem happy to see us! There has been many ups and downs with her stomach issues that continue to this day, but once again the staff has been there to always help!

We are blessed to have this hospital close by to help Lexi through this new challenge in her life. Lexi will have health issues to manage her entire life, she is a strong girl and we are so proud of her! She is now a happy 12 year old who loves spending time with her family and dogs!

When we saw Darryl and Sarah posts about hosting a sale to support Children's Hospital we were 100% on-board . We've committed to consigning two of our best heifer calves on the farm to this worthy and very personal cause.

Nathan & Kate Wade & Family

Children's Health Foundation believes that children and their families in Western Ontario deserve the best possible care and the most possible hope when faced with a serious health issue.

That is why we are calling on caring people to help strengthen and transform the health care experience in our region. Your generosity will fund cutting-edge equipment, care-enhancing programs and ground-breaking paediatric research at Children's Hospital in London, TVCC and Children's Health Research Institute.

You can ensure better childhoods for kids facing challenges and serious health issues and hope, relief and support for those who love them.





Our son Benjamin was born February 17th 2020 in Woodstock Ontario. He was a happy and healthy little boy, and started off well. At 3 weeks of age during a routine checkup our family Doctor noticed that Ben had signs of slight breathing difficulties. He was monitored overnight at Stratford Hospital and sent home the next morning as he seemed to have improved and they were not concerned. The following day he seemed completely normal for the morning, but in the afternoon we were unable to wake him up for a feeding. As we tried to do our best to wake him we noticed he was only breathing for short periods at a time which soon resulted in his change in colour. We then rushed him to Woodstock General Hospital where he was stabilized and then transported to the Pediatric Critical Care Unit (PCCU) at London's Victoria Hospital. Thankfully the Doctors were able to stabilize Ben's breathing without having to intubate him. Although he did not test positive for any virus or bacteria it was still believed that he had an unknown type an infection.



Ben was home for a week before he was rushed back to London with similar symptoms as before. This time he tested positive for Rhinovirus. His periods of apnea were treated with high flow oxygen and he was sent home after a 4 day stay.

On Ben's third visit, Doctors assured us that he wasn't going to be leaving until a definite cause was found and corrected. While in the PCCU, Ben's care team witnessed the episodes of coughing, choking and colour change we had been seeing at home. Ben's heart rate and respiratory rate would spontaneously drop, causing his blood oxygen levels to drop. Sometimes these drops were minor and self-resolving, but other times Ben required supplemental oxygen and stimulation from his Nursing team. Over the coming weeks his Care Team sent him for testing in all

areas of the hospital to rule out anything that could be wrong neurologically or physically. Each time Ben passed his tests with flying colours; he was completely normal, yet these episodes persisted, sometimes 15-20 times per day.

His care team was puzzled, yet continued to systematically work through eliminating possible causes. One theory was that GERD (Gastroesophageal reflux disease) could be causing inflammation of his throat. This, coupled with the cold symptoms could be causing an issue with his Vagus nerve, which works to lower your heart rate. While in the PCCU we worked through a series of different Baby Formulas and tactics to try and reduce his reflux symptoms. Very slowly Ben showed some improvement on a combination of hypoallergenic formula and 2 oral drugs; one to reduce stomach acid production and one to increase stomach emptying. As Ben showed improvement he was moved upstairs to the General Pediatric Floor. In early May his Care Team decided that Ben's symptoms were manageable, and asked if we were comfortable to take him home.

We are happy to share that Benjamin has just turned 1! We will forever be grateful for the incredible team of Nurses, Doctors, and Specialists that cared for Ben during his time at the London Children's Hospital. It was a stressful few months travelling back and forth to London, all while having a farm, a job, and a 2 year old at home. But whenever we were away, we were always comforted by the fact that Ben was in the best hands possible in London.

When Darryl and Sarah asked us to be part of the sale, we jumped at the opportunity to give back to the Hospital that gave us so much. We hope that this sale will help you to invest in great cow families, while also contributing to continuously improving care for the kids at London Children's Hospital. A huge thank you to all the consignors and those who made the sale possible.

Mike & Emma Rutherford & Family



MARCH 26-27, 2021

**Auction Opens
March 26 @ Noon EST**

**Soft Close
March 27 @ 5pm EST**

Auction will start on Friday, March 26 on www.cattleclub.com at 12:00 pm (EST).
Buyers must be approved to bid with a form of payment prior to bidding.
Online auction will end in lot order starting at 5:00pm (EST) on Saturday, March 27.
End times will be extended if a bid is placed within the last two minutes of the auction.

SALE STAFF:

Darryl Markus ... Ingersoll, ON ... 519-421-6743
Sarah Markus ... Ingersoll, ON ... 519-320-8210
Julie Ashton, Catalog ... Marseilles, IL ... 815-766-0045
Russell Gammon ... Fergus, ON ... 226-751-3618
Ethan McMillen, Campbellford, ON ... 705-653-7445
Grant Armstrong ... Millbrook, ON ... 514-232-3909
Josh Karn ... Woodstock, ON ... 519-532-4705
Jordan Underhill ... Guelph, ON ... 519-760-0892



CattleClub.com

Shipping Policy

Transportation of purchased cattle or embryos is the responsibility of the buyer. Seller may assist the buyer in making transportation arrangements. No animals will be shipped until payment has been made and funds have cleared.

Refund Policy

All sales are final. Buyers are responsible for payment directly to the seller within 5 days of auction end. No animals, embryos, or products will

be shipped until payment has been made and funds have cleared.

How do I Bid?

All bidding will take place at CattleClub.com. You simply need join CattleClub.com and use your credit card to get approved to bid. If you have already been approved to bid from a previous CattleClub.com auction, there is no need to get approved again! Online auction lots will end in lot order end times will extend if a bid is placed within the last

minutes of the auction.

What is proxy bidding?

To place a proxy bid, type your maximum bid amount and click the bid button, your maximum bid is concealed and bids will be automatically placed ONLY when another bidder places another bid. Bids will only go up by the minimum bid increment. In the event of a tie bid, the first bidder who placed a proxy bid for that amount will be winning.



CDX-Roszell M&M

Sells as Lot 1



CDX-ROSZELL *M&M*

Consigned by:
Canadian Dairy Xpo
c/o Underhill Family
519-760-0892

HOCANF 13437356 B&W ET B: 17 Dec 2019
***POC *RDC A2/A2 // Bred 2-21-21 to Sexed Vogue Illustrator**
CAN-GPA DEC*20 78%REL GPA LPI 2732/74%
KG M 1632/96% F 21/57% %F-0.36 PRO\$
MR 97 P 37/86% %P-0.14 1362
CAN-GPA DEC*20 74%REL CONF 9/95%
MS 10 F&L 4 DS 3 RP 3



COOMBOONA ZIPIT MIRAND-PP

1993596 AUS *POS*RDC*CDF*CVF*BYF*BLF A2/A2
CAN-GPA DEC*20 80%REL GPA LPI 3114/75%
KG M 1431/80% F 50/67% %F-0.04 PRO\$
MR 99 P 36/53% %P-0.09 2085
CAN-GPA DEC*20 76%REL CONF 14/99%
MS 13 F&L 8 DS 7 RP 7

VOGUE LOYOLA RED MISTRESS

12187163 CAN R&W *PO VG-87-4Y-CAN
MS:86 (FA:6 RAH:8 RAW:7) F&L:87 DS:89 RP:89
2-00 2 356 13598 3.7 508 3.3 450
3-01 2 322 14154 4.0 570 3.3 463
AVG BCA: 268-288-275 (+35M +26F +36P)
Progeny: 0 EX, 0 VG, 1 GP, 100% GP
1 Dau ME: 13867M 564F 463P (BCA: 262-289-280)
·1st Senior Yearling, Niagara '18

ZIMMERVIEW WONKA LOYOLA-P

73926711 USA *PO *RDC A2/A2
GLPI 2697

MAPEL WOOD CGAIN MILEY P

12186888 CAN B&W *POC *RDC VG-87-3Y-CAN
MS:87 (FA:5 RAH:7 RAW:8) F&L:88 DS:87 RP:85
2-05 RX 365 16448 3.5 576 3.3 550
3-07 RX 365 16273 4.2 681 3.6 579
5-00 RX 357 19296 3.7 711 33 635
AVG BCA: 328-325-343 (+65 +42 +68)
Progeny: 0 EX, 1 VG, 3 GP 100%GP
4 Dau ME: 14926M 542F 464P (BCA: 282-278-281)
·2 Superior Lactations

3rd - 7th Dams:

Snowbiz Earnhardt Mimi PP GP-83-2Y 2*
2-04 2 365 10181 4.0 409 3.6 370
Venture Snow Muse P VG-86-2Y 5*
4-06 3 355 15952 4.5 717 3.4 536
West Port Arron Doon Mit P Red VG-85-2Y 3*
2-11 2 365 15522 4.9 766 3.3 508
West Port Arron Doon May P Red VG-86-6Y 2*
5-09 2 365 18038 4.0 722 3.3 592
Hickorymea Judge Maren P VG-85-4Y
5-11 2 365 13690 3.9 530 3.1 418
Hickorymea Leader Mel P-Red VG-86-5Y-USA
5-01 2 356 11549 3.6 412 2.8 329



Millen Aleah Naughty Diamond
From the Same Family as Lot 2
 3rd Senior Calf, ON County Show '19

Aleah Millen Naughtys Secret EX-93
From the Same Family as Lot 2



DELCREEK *Hope For Brooks*

HOCANF 13860362 B&W B: 14 Dec 2020

Consigned by:
 Peter Rylaarsdam
 613-724-8840



WALNUTLAWN SIDEKICK

12508113 CAN *CDF*CVF*RDF*BYF*BLF*DPF*CNF
 A2/A2 VG-85-2YR-CAN
 CAN-GPA DEC*20 92%REL GPA LPI 3265/86%
 KG M-451/7% F46/61% %F+0.57 PRO\$
 MR 106 P14/21% %P+0.24 1844
 CAN-GPA DEC*20 88%REL CONF 19/99%
 MS 16 F&L 12 DS 14 RP 8

DELCREEK INSPECT MY GADGET

11704154 CAN B&W VG-87-3Y-CAN
 MS:87 (FA:8 RAH:7 RAW:5) F&L:88 DS:87 RP:87
 2-03 2 365 11776 3.8 448 3.4 396
 3-06 2 341 13466 3.6 488 3.2 429
 4-07 2 359 13940 3.9 538 3.3 455
 6-03 2 328 1211 3.9 496 3.3 421
 LIFE: 4 LAC 52444 3.8 2001 3.3 1729
 AVG BCA: 242-244-248 (+24M +20F +28P)
 · 3rd Senior Yearling, East ON Champ '14
 · 3rd Senior Yearling, Carleton-Russell '14

BRAEDALE GOLDWYN

10705608 CAN
 GP-84-8Y-CAN GM'12 EXTRA'05 GLPI 2568

DELCREEK BLUEBERRY CRUMBLE

8479135 CAN B&W VG-87-3YR-CAN 9*
 MS:87 (FA:7 RAH:7 RAW:5) F&L:85 DS:88 RP:87
 2-05 2 365 11254 4.3 479 3.2 361
 3-07 2 346 12490 4.4 555 3.2 395
 4-07 2 365 14547 4.2 604 3.2 461
 5-11 2 365 13053 4.2 549 3.4 438
 7-01 2 365 13572 4.0 542 3.1 423
 LIFE: 5 LAC 68315 4.32 2897 3.2 2219
 AVG BCA: 233-261-232 (+24M +55F +23P)
 Progeny: 3 EX, 10 VG, 3 GP, 1 G 94%GP
 19 Dau ME: 12332M 476F 375P (BCA: 233-244-227)

MATERNAL SISTER TO GADGET:

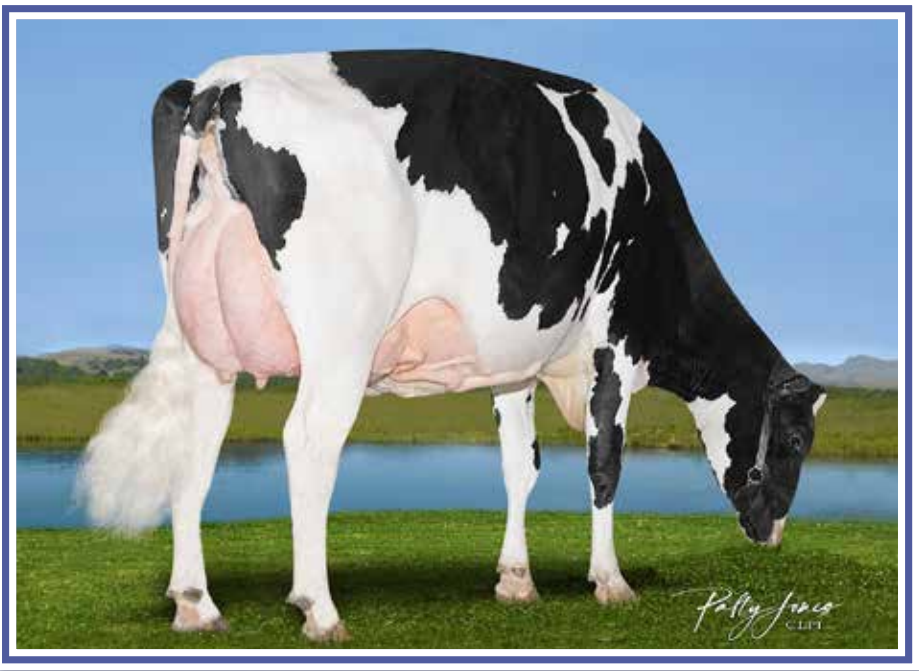
Delcreek Naughty By Night (VG-88-4Y 3*)
 Res. All-American & HM All-Canadian
 Intermediate Calf 2011

HER DAUGHTER:

Aleah Millen Naughtys Secret (EX-93-2E)
 Grand Champion, Autumn Opportunity '18
 Nom. All-Canadian Senior 2-Year-Old 2015

3rd - 4th Dams:

Delcreek Pepsi VG-88
 4-00 2 365 13108 4.1 538 3.1 409
 LIFE: 5 LAC 54803 4.0 2182 3.1 1705
Delcreek Phyllis VG-88 2*
 6-05 2 365 12971 4.2 542 3.1 407
 LIFE: 7 LAC 66891 4.2 2791 3.3 2186



Silvercap Sifter Teresa VG-87

Dam of Lot 3



Calbrett Shottle Teekah EX-93-4E 10*

Grandam of Lot 3



SILVERCAP MIRAND

Tawnya

HOCANF 13869605 B&W B: 01 Oct 2020
*POC

Consigned by:

Smithden Holsteins
519-788-1696
Silvercap Holsteins
905-541-9414



COOMBOONA ZIPIT MIRAND-PP

1993596 AUS *POS*RDC*CDF*CVF*BYF*BLF A2/A2
CAN-GPA DEC*20 80%REL GPA LPI 3114/75%
KG M 1431/80% F 50/67% %F-0.04 PRO\$
MR 99 P 36/53% %P-0.09 2085
CAN-GPA DEC*20 76%REL CONF 14/99%
MS 13 F&L 8 DS 7 RP 7

SILVERCAP SIFTER TERESA

12805143 CAN B&W *POR-VG-87-3Y-CAN
MS:87 (FA:6 RAH:7 RAW:7) F&L:88 DS:86 RP:88
2-00 2 292 9267 3.4 316 3.3 309
3-00 2 P133 10513 3.4 362 3.3 351
AVG BCA: 230-210-239 (-8M -34F -10P)

CALBRETT SIFTER P

11714965 CAN *POC *RDC
VG-85-2Y-CAN GLPI 2827

CALBRETT SHOTTLE TEEKAH

8630903 CAN B&W EX-93-4E-CAN 10*
MS:94 (FA:8 RAH:8 RAW:9) F&L:92 DS:94 RP:93
2-06 2 365 14518 4.1 593 3.2 458
3-09 2 365 17614 4.0 712 3.1 546
5-06 2 365 17499 3.7 651 3.2 555
7-06 2 365 16650 3.7 613 3.2 539
9-09 2 365 13273 4.0 534 3.3 443
11-09 2 365 15817 3.6 563 3.2 508
LIFE: 6 LAC 113943 3.9 4401 3.3 3733
AVG BCA: 286-297-284 (+44M +36F +35P)
Progeny: 8 EX, 5 VG, 2 GP, 100%GP
14 Dau ME: 13391M 497F 413P (BCA 253-255-250)
· 2 Superior Lactations
· Holstein Canada Cow of the Year Nominee 2019
· Reserve Grand Champion, Bruce-Grey '12
· 3rd 5-Year-Old, Oxford '13

3rd -11th Dams:

Helmcrest Champion Tabby EX-94-2E-CAN 3*
9-00 2 365 18131 4.8 864 3.2 580
LIFE: 4 LAC 73972 4.3 3169 3.3 2475
· All-West Mature Cow 2010
· All-West 5-Year-Old 2009
· Reserve All-Canadian Senior 3-Year-Old 2007
· Grand Champion, BC Spring Show 2010
Helmcrest Istar Tabatha EX-90-2E-CAN 2*
5-03 2 365 11478 3.6 412 3.2 365
Helmcrest Jed Maria EX-93-3E-GBR
5-07 2 305 11411 3.4 384 3.2 366
Helmcrest Broker Yvonne VG-87-CAN 3*
5-08 2 317 12528 4.2 522 3.4 427
LIFE: 7 LAC 81357 4.2 3407 3.4 2781
Helmcrest Starbuck Darlene GP-82-CAN
4-09 2 365 12501 3.9 482 3.6 445
Mountholm Faith EX-2E-CAN 3*
7-05 2 353 11773 3.4 395 3.3 383
LIFE: 6 LAC 61913 3.4 2104 3.2 1982
Mountholm Nellie VG-85-CAN 2*
8-09 2 345 6845 3.4 233 3.4 234
Mountholm Downy VG-85-CAN 2*
9-09 2 365 8415 3.7 309
Mountholm Sumax VG-CAN *



View-Home Uno Hope-ET EX-92
Grandam of Lot 4



CALMAC MAESTRO *Hopscotch*

Consigned by:
Calmac Holsteins
519-536-1536

HOCANF 13845828 ET A1/ A2B&W B: 02 Nov 2020
CAN-GPA DEC*20 79%REL GPA LPI 3108/75%
KG M 966/80% F 69/80% %F+0.29 PRO\$
MR 103 P 33/81% %P+0.01 2144
CAN-GPA DEC*20 75%REL CONF 9/95%
MS 7 F&L 6 DS 6 RP 5



PROGENESIS MAESTRO

12949010 CAN A1/A1
CAN-GPA DEC*20 83%REL GPA LPI 3452/78%
KG M 1568/84% F 104/98% %F+0.39 PRO\$
MR 105 P 71/94% %P+0.16 3081
CAN-GPA DEC*20 79%REL CONF 8/99%
MS 5 F&L 6 DS 7 RP 5

BGP DELTA HOPEFULLY-ET

143856142 USA B&W EX-90-4Y-CAN
MS:91 (FA:8 RAH:7 RAW:7) F&L:91 DS:90 RP:88
CAN-GPA DEC*20 84%REL GPA LPI 3122/80%
KG M 962/80% F 68/96% %F+0.28 PRO\$
MR 105 P 37/86% %P+0.04 2140
CAN-GPA DEC*20 80%REL CONF 9/95%
MS 8 F&L 6 DS 4 RP 6
1-11 RX 311 11566 4.2 482 3.2 374
2-10 RX 365 15712 4.2 660 3.4 531
4-03 RX P142 13248 4.6 611 3.3 436
LIFE: 3 LAC 36779 4.3 1572 3.3 1218
AVG BCA: 296-341-304 (+42M +61F +35P)
Progeny: 0 EX, 0 VG, 4 GP 100%GP
4 Dau ME: 14344M 562F 461P (BCA: 271-288-279)
* 2 Superior Lactations

MR MOGUL DELTA 1427-ET

72128216 USA
GLPI 3055

VIEW-HOME UNO HOPE-ET

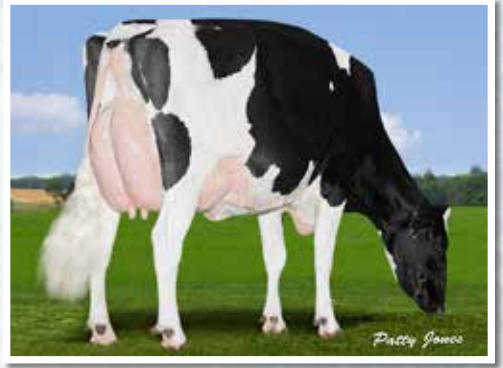
72364645 USA EX-92-CAN EX-92-4YR-USA 4*
MS:92 (FA:9 RAH:9 RAW:8) F&L:90 DS:93 RP:96
2-00 2 365 11707 4.7 548 3.7 430
3-10 3 365 17755 5.1 904 3.7 653
LIFE: 2 LAC 32061 5.0 1594 3.7 1195
AVG BCA: 304-422-348 (+12M +109F +48P)
Progeny: 1 EX, 3 VG, 6 GP 100%GP
11 Dau ME: 14714M 632F 502P (BCA: 278-324-304)

3rd - 8th Dams:

Pine-Tree 2149Robst 4846-ET VG-87 VG-MS DOM
2-04 3 365 14515 4.8 689 3.4 497
· Sons in AI including Monterey & Powerball-P
Pine-Tree Zenith Sheen VG-87 VG-MS DOM
1-11 3 305 11113 3.9 435 3.2 357
Pine-Tree Martha Sheen-ET VG-86 VG-MS DOM
1-11 3 365 14157 4.2 592 3.3 466
Pine-Tree Missy Martha-ET VG-86 VG-MS DOM
2-02 3 365 15753 3.6 574 3.3 515
Wesswood-HC Rudy Missy-ET 3E-92 GMD DOM
4-11 3 365 18543 4.1 755 3.4 628
· Global Cow of the Year 2014
· 18 sons & 107 grandsons in AI
Next Dams: EX-90 x VG-87 x VG-87 x VG-87



Hulsdale B Outlast Maui VG-87
 Dam of Lot 5



Hulsdale B Science Malaki P EX-91
 Grandam of Lot 5



HULSDALE ADAGIO *Maionni P*

HOCANF 13953515 B&W B: 30 Dec 2020

Consigned by:
 Hulsdale Farms
 905-505-6099
 Brad Hulsdale
 905-888-1093



STANTONS ADAGIO-P-ET

8403129016082 *POC *CVF*BYF*BLF*DPF*CNF
 A1/A2 VG-87-4YR-CAN
 CAN-GPA DEC*20 99%REL GPA LPI 3285/95%
 KG M 1245/73% F 53/69% %F+0.04 PRO\$
 MR 107 P 51/76% %P+0.07 2282
 CAN-GPA DEC*20 98%REL CONF 10/96%
 MS 7 F&L 10 DS 0 RP 11

HULSDALE B OUTLAST MAUI

13011113 CAN B&W VG-87-2Y-CAN
 MS:87 (FA:8 RAH:7 RAW:5) F&L:88 DS:87 RP:87
 CAN-GPA DEC*20 81%REL GPA LPI 2944/77%
 KG M 698/69% F 50/90% %F+0.24 PRO\$
 MR 108 P 26/72% %P+0.02 1780
 CAN-GPA DEC*20 77%REL CONF 5/72%
 MS 3 F&L 8 DS 1 RP 3
 1-09 2 320 10328 4.2 435 3.3 342
 AVG BCA: 261-299-267 (+20M +48F +22P)

PROGENESIS OUTLAST

12302901 CAN
 GLPI 3037

HULSDALE B SCIENCE MALAKI P

12227576 CAN B&W *POC EX-91-4YR-CAN
 MS:91 (FA:8 RAH:7 RAW:7) F&L:93 DS:91 RP:92
 1-10 2 365 11304 3.7 419 3.2 357
 3-01 RX 365 12220 4.0 494 3.2 386
 4-06 RX 365 16995 3.9 656 3.1 524
 LIFE: 3 LAC 42611 3.9 1661 3.2 1348
 AVG BCA: 266-274-257 (+43M +24F +29P)
 Progeny: 0 EX, 1 VG, 1 GP 100%GP
 2 Dau ME: 16990M 696F 532P (BCA: 321-357-322)
 - Dam of Macnutt PP @ Browndale

3rd - 7th Dams:

Hulsdale B Windbrook Mahalo EX-91-3E
 6-00 2 365 12356 3.3 402 3.2 400
 LIFE: 4 LAC 48868 3.5 1698 3.4 1641
Hulsdale B Denzel Maui VG-87 3*
 5-07 2 365 12786 3.6 465 3.5 453
 LIFE: 4 LAC 50416 3.8 1915 3.6 1814
Hulsdale B Goldwyn Makenzie VG-87
Donavon Lheros Mimi VG-85
 4-08 2 365 11308 3.8 426 3.3 378
Hulsdale B Windbrook Mahalo EX-91-3E



Harvdale Lauthority Peanut EX-95-3E

From the Same Family as Lots 6 & 7



JANEFIELD IMPRESSION

Priscilla

HOCANF 13739561 B&W B: 10 Feb 2020

Consigned by:
Dr. Tim Henshaw
705-737-5919



JANEFIELD IMPRESSION

Priceless

HOCANF 13392793 B&W B: 01 Oct 2019 // **Pregnant to Walnutlawn Sidekick**



SIRE OF LOTS 6 & 7:

MONUMENT IMPRESSION-ET

66382657 USA *CVF*RDF*BYF*BLF*DPE*CNF*XIF
A2/A2 EX-95-9YR-CAN ST*13
CAN-GPA DEC*20 99%REL GPA LPI 2863/99%
KG M 715/48% F 14/22% %F-0.11 PRO\$
MR 105 P13/20% %P-0.09 1333
CAN-GPA DEC*20 99%REL CONF 11/98%
MS 7 F&L 8 DS 9 RP 12

DAM OF LOT 6:

JANEFIELD BYWAY PATOS

12442243 CAN B&W VG-86-3Y-CAN
MS:87 (FA:7 RAH:8 RAW:6) F&L:85 DS:86 RP:83
2-01 2 320 9214 4.1 380 3.4 312
3-04 2 297 9237 4.2 385 3.2 299
AVG BCA: 206-232-215 (-13M -11F -3P)

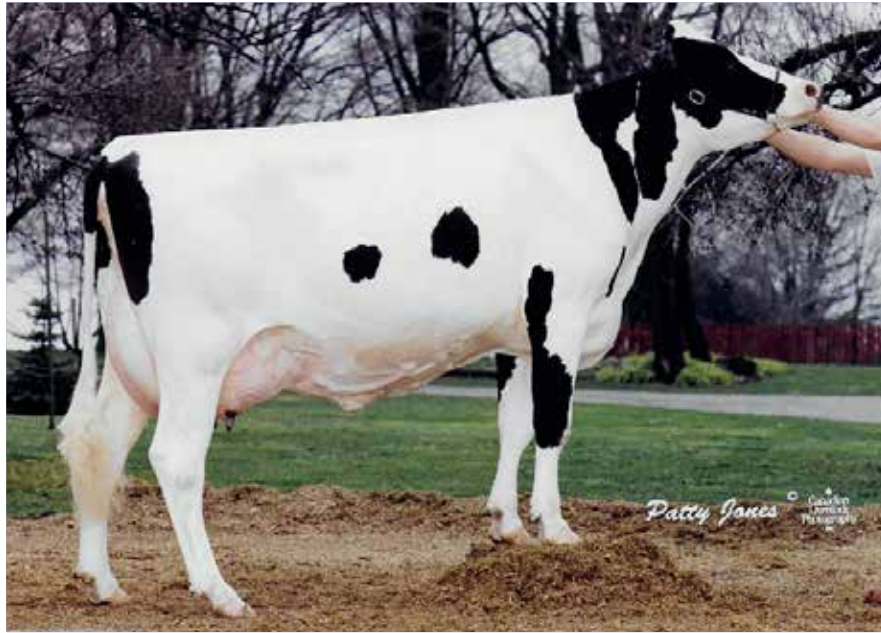
DAM OF LOT 7 & GRANDAM OF LOT 6:

JANEFIELD BAXTER PETRA

11558698 CAN B&W EX-91-2E-CAN
MS:91 (FA:7 RAH:8 RAW:6) F&L:91 DS:91 RP:91
2-05 2 365 9998 4.1 413 3.2 324
3-08 2 365 12647 3.9 494 3.2 409
5-00 2 365 12934 4.2 543 3.2 409
6-08 2 35 14139 3.7 523 3.0 427
LIFE: 4 LAC 53736 4.0 2156 3.2 1727
AVG BCA: 221-232-216 (-1M -21F -9P)
Progeny: 0 EX, 1 VG, 0 GP 100%GP
1 Dau ME: 10903M 450F 353P (BCA: 206-231-214)

Next Dams:

Janefield Typemaker Pearl VG-87 EX-MS
3-06 2 365 12187 4.2 509 3.2 386
LIFE: 5 LAC 48219 4.1 1954 3.3 1574
Janefield Princess EX-91
11-10 2 362 12447 3.8 468 3.4 422
LIFE: 7 LAC 85330 3.7 3130 3.4 2872
· 1st Mature Cow, Simcoe '07 & '08
· 1st 5-Year-Old, Simcoe '05
Velan Inspiration Paula VG-86 2*
LIFE: 7 LAC 41664 4.2 1735 3.6 1498
Velan Astro Arlene VG-85
Velan Reflection Pauline VG-86
LIFE: 10 LAC 60821 4.1 2472
Velan Triune Opal VG-85



Marbro Mason Terra EX 2*
5th Dam of Lot 8



ROUGH RIVER DELTA

Tinsley

HOCANF 12474882 B&W B: 26 Apr 2020
Bred 3-8-21 to Sexed Delta

Consigned by:
Rough River Holsteins
226-791-1365



MR MOGUL DELTA 1427-ET

72128216 USA B&W *CDF*CVF*RDF*BYF A1A2
CAN-GEV DEC*20 98%REL GLPI 3055/95%
KG M 1157/70% F 66/83% %F 0.18 PRO\$
MR 102 P 42/63% %P 0.02 2085
CAN-GEV DEC*20 96%REL CONF 8/92%
MS 8 F&L 6 DS 4 RP 1

MARBRO DEMPSEY TANDY

11854982 CAN B&W VG-87-6Y-CAN
MS:90 (FA:7 RAH:8 RAW:7) F&L:90 DS:85 RP:80
2-08 2 346 8348 3.9 328 3.4 287
3-09 2 365 10289 3.8 386 3.4 349
4-10 2 260 8025 3.7 296 3.2 257
5-10 2 323 10036 3.9 394 3.2 318
LIFE: 5 LAC 38345 3.9 1493 3.3 1261
AVG BCA: 183-186-188 (-29M -35F -20P)
Progeny: 0 EX, 0 VG, 2 GP, 100% GP

LIRR DREW DEMPSEY

61083609 USA *CDC
EX-93-11YR-USA EXTRA'11 GLPI 2789 CONF 12

MARBRO PROSPERITY THELMA

9783965 CAN B&W GP-82-2YR-CAN
MS:83 (FA:8 RAH:7 RAW:5) F&L:82 DS:82 RP:84
2-00 2 308 8589 3.0 261 3.1 264
3-00 2 302 8254 2.9 239 3.0 251
AVG BCA: 209-166-197 (-8M -49F -14P)
Progeny: 0 EX, 1 VG, 0 GP 100%GP
1 Dau ME: 9633M 363F 310P (BCA: 182-186-188)

3rd - 9th Dams:

Marbro Astronomical Tansy VG-87
Marbro Rudolph Talcolm VG-87
LIFE: 5 LAC 54967 3.6 2003 3.1 1689
Marbro Mason Terra EX 2*
LIFE: 4 LAC 47454 4.3 2021 3.4 1611
Marbro Raider Tierra VG-87 12*
LIFE: 6 LAC 87034 3.6 3106 3.1 2715
Marbro Tammy Dewdrop ET VG-85
Marbro Roxsy Drew EX 5*
LIFE: 8 LAC 71668 4.5 3227 1.4 968
Marbro Echo Dewdrop VG-86 2*
LIFE: 8 LAC 58334 4.7 2755



Ms Mitzi Shndy Meryl-Red-ET EX-91-2E
5th Dam of Lot 9



Consigned by:
Dairydale Farms Ltd.
519-535-7300

DAIRYDALE MIRAND *Ginger* - P

HOCANF 13734929 R&W B: 01 Sep 2020
***POC**



COOMBOONA ZIPIT MIRAND-PP

1993596 AUS *POS*RDC*CDF*CVF*BYF*BLF A2/A2
CAN-GPA DEC*20 80%REL GPA LPI 3114/75%
KG M 1431/80% F 50/67% %F-0.04 PRO\$
MR 99 P 36/53% %P-0.09 2085
CAN-GPA DEC*20 76%REL CONF 14/99%
MS 13 F&L 8 DS 7 RP 7

DAIRYDALE ALLEGRO MITTENS

12337464 CAN R&W *POR VG-87-4Y-CAN
MS:87 (FA:4 RAH:8 RAW:7) F&L:88 DS:89 RP:88
1-10 3 307 8499 3.5 295 2.9 247
2-08 3 276 10843 3.6 394 3.0 327
3-07 3 331 12824 3.7 476 3.3 421
4-09 3 P178 14709 4.0 590 3.0 442
LIFE: 4 LAC 41736 3.7 1543 3.0 1271
AVG BCA: 257-256-244 (-10M -36F -15P)

MARYCLERC ALLEGRO P

108380430 CAN *POC *RDC
GLPI 2651

DAIRYDALE CHIPPER MILLY

11890464 CAN R&W *POR
1-10 3 65 1669 3.8 64 2.8 47
Progeny: 0 EX, 1 VG, 0 GP 100%GP
1 Dau ME: 13603M 497F 403P (BCA: 257-255-244)

3rd - 9th Dams:

Rollingview B P Red Minny GP-80
Mrs Mryl Marmax Mazda-ET EX-90-6E 3*
11-08 2 18338 3.5 644 2.8 513
LIFE: 9 LAC 134844 3.5 4689 2.9 3968
Ms Mitzi Shndy Meryl-Red-ET EX-91-2E-USA
5-00 2 365 12478 4.3 537 3.9 482
LIFE: 4 LAC 54482 4.3 2320 3.7 2018
Ms Meyl Johnson Mitzi-Red VG-89 USA
4-06 2 365 13490 3.3 450 3.2 426
Ron-Nan Mile Meryl-Red EX-90 EX-MS USA
Ron-Nan Leader Mitzi-Red VG-89 EX-MS DOM
2-03 3 365 14257 3.8 546 3.5 506
Miss Ron-Nan Enhanc Molli-Red EX-90 GMD DOM
3-08 3 365 18997 4.9 924 3.5 659
C Romandale Count Monita-Red EX-93-3E-USA
LIFE: 6 LAC 47281 4.6 2165
Romandale Maximus Monita EX-CAN 2*
11-00 2 365 12438 4.3 540
LIFE: 8 LAC 75302 4.0 2982
Mellow Breeze Giselle EX-CAN
LIFE: 10 LAC 75375 3.9 2927
· *Nom. All-Canadian 4-Year-Old 1973*
Mellow-Breeze Marquis EX-CAN



Heather Holme Dundee Malibu EX-94-3E 11*
Dam of Lot 10



Heather Holme Goldwyn Mist EX-90-3E 2*
Full Sister to Lot 10
HM Grand Champion, Middlesex '14
2 Superior Lactations & over 80,000 Lifetime!



GOLDWYN EMBRYO x

Malibu

1 #1 Embryo

Consigned by:

Glen & Curtis McNeil
 519-525-2948



BRAEDALE GOLDWYN

10705608 CAN B&W *CDC*CVF*BYF*BLF
 GP-84-8Y-CAN GM'12 EXTRA'05
 CAN-GPA DEC*20 99%REL GPA LPI 2568/99%
 KG M-339/9% F 17/25% %F+0.27 PRO\$
 MR 103 P 3/10% %P+0.13 727
 CAN-GPA DEC*20 99%REL CONF 5/79%
 MS 4 F&L 6 DS 3 RP 0

HEATHER HOLME DUNDEE MALIBU

7976880 CAN B&W EX-94-3E-CAN 11*
 MS:94 (FA:9 RAH:8 RAW:6) F&L:93 DS:94 RP:93
 2-00 2 365 8967 3.9 354 3.5 312
 3-01 2 341 9268 3.5 322 3.7 341
 4-01 2 365 12012 3.7 449 3.5 419
 5-05 2 365 11935 3.7 437 3.2 386
 7-09 2 365 1220 4.4 536 3.3 400
 LIFE: 5 LAC 73020 4.0 2953 3.6 2604
 AVG BCA: 200-206-212 (-51M -76F -48P)
 Progeny: 4 EX, 10 VG, 2 GP 100%GP
 16 Dau ME: 13497M 566F 441P (BCA: 255-290-267)
 · *HM Grand Champion, Middlesex '12*
 · *1st 5-Year-Old, Middlesex '11*

REGANCREST DUNDEE-ET

127640114 CAN B&W
 EX-95-6YR-USA ST'04 GLPI 1745

HEATHER HOLME LEADER DESTINY

9174432 USA B&W VG-85-3Y-CAN 2*
 MS:86 (FA:6 RAH:8 RAW:7) F&L:83 DS:86 RP:85
 1-11 2 329 11053 3.3 360 3.3 366
 2-11 2 319 9206 3.7 338 3.7 338
 4-00 2 321 12872 3.5 453 3.3 424
 4-11 2 357 14717 2.9 422 3.4 502
 6-00 2 320 12628 3.3 418 3.4 43
 6-11 2 365 15577 3.4 523 3.3 513
 LIFE: 7 LAC 80852 3.3 2671 3.4 2712
 AVG BCA: 257-225-269 (+19M -22F +22P)
 Progeny: 1 EX, 1 VG, 0 GP, 100%GP
 14 Dau ME: 11697M 437F 372P (BCA: 221-224-225)

3rd - 7th Dams:

Heather Holme Star Donna EX-5E-CAN
 9-08 2 365 12436 3.9 483 3.3 410
 LIFE: 7 LAC 80137 3.8 3021 3.4 2713
Heather Holme Lindy Donna G-78-2Y-CAN
Heather Holme Warden Doris VG-87-CAN
 9-04 2 352 12587 3.4 430 3.2 408
 LIFE: 8 LAC 94973 3.5 3360 3.3 3139
Heather Holme Cit Debbie EX-CAN
 8-09 2 365 10764 3.8 413 3.0 323
 LIFE: 10 LAC 91194 4.0 3608
Heather Holme Edith GP-82-CAN 2*
 12-08 2 365 11901 4.6 547
 LIFE: 12 LAC 140033 4.4 6141



Avant-Garde Door Stellar-ET VG-87

Dam of Lot 11



Walnutlawn McCutchen Summer EX-95-2E

Grandam of Lot 11



UNIX EMBRYO x *Stellar*

1 #1 Sexed Embryo

Consigned by:

McIntosh Holsteins
519-535-8822

CROTEAU LESPERRON UNIX

107567492 CAN *CVF*RDF*BYF*BLF*DPF*CNF
EX-96-7YR-CAN ST'17
CAN-GPA DEC*20 99%REL GPA LPI 2943/98%
KG M 756/51% F 23/32% %F-0.05 PRO\$
MR 97 P 21/29% %P-0.04 1461
CAN-GPA DEC*20 99%REL CONF 12/99%
MS 12 F&L 9 DS 1 RP 7

AVANT-GARDE DOOR STELLAR-ET

840 3147399275 B&W VG-87-2Y-CAN
MS:87 (FA:9 RAH:8 RAW:8) F&L:85 DS:87 RP:85
CAN-GPA DEC*20 85%REL GPA LPI 2931/80%
KG M 524/11% F 47/85% %F+0.61 PRO\$
MR 107 P -1/24% %P+0.15 1319
CAN-GPA DEC*20 83%REL CONF 13/99%
MS 11 F&L 11 DS 10 RP 2

VAL-BISSON DOORMAN

107281711 CAN B&W A2A2
EX-90-5Y-CAN ST'16 GLPI 2948

WALNUTLAWN MCCUTCHEN SUMMER

11120480 CAN B&W EX-95-2E-USA 9* EEEEE
1-10 2 365 12248 4.6 561 3.3 403
3-03 2 365 13446 3.6 486 3.2 431
AVG BCA: 267-331-269 (+35M +76F +29P)
Progeny: 1 EX, 14 VG, 1 GP, 100%GP
15 Dau ME: 13603M 569F 443P (BCA: 257-292-268)

SUMMER!!

*Holstein Canada Cow of the Year Nominee 2020
Nominated All-Canadian Mature Cow 2020
Nominated All-American Sr. 3 Year Old 2016
Nominated All-Canadian Sr. 3 Year Old 2016
1st Mature Cow, Ontario Summer Show '20
Res. Int. Champion, Northeast Fall National '16
Former #1 Type Cow in Canada
15 EX or VG daughters to date
Progeny up to +3.26PTAT*

3rd - 13th Dams:

Misty Springs Lavanguard Sue VG-89-CAN 13*
4-03 2 365 13664 4.6 626 3.2 439
- Dam of 8 EX & 8 VG daughters
- Dam of Walnutlawn Solomon-ET PTA +2.59T
Misty Springs FBI Suzanne-ET VG-87-2Y 4*
2-02 2 365 11856 4.6 544 3.5 418
Willsona Freelance Sizzle-ET VG-86-2Y 10*
2-02 3 335 11562 3.9 455 3.1 358
Gen-I-Beq Convincer Silver VG-88 16*
3-11 3 330 11974 3.7 442 3.0 353
Glen Drummond Splendor VG-86 39*
4-10 2 314 12025 4.2 510 3.2 381
Glen Drummond Aero Flower VG-88 18*
Glen Drummond Shower EX-CAN 14*
Glen Drummond S C Jo Beth EX-CAN 2E 7*
Glen Drummond Matt Beth VG-85 4*
Glen Drummond Marquis Beth VG-CAN
Ferglynn Rag Apple Bertha VG-CAN 3*



Markridge Cmac Solomon Adelle VG-87

Dam of Lot 12



MARKRIDGE LUXOR *Aylana*

HOCANF 13790628 B&W B: 21 Dec 2020

Consigned by:

Markridge Holsteins
519-421-6743



BLONDIN LUXOR-RED

111239184 CAN R&W *CVF*BYF*BLF*DPF A1/A2
CAN-GPA DEC*20 80%REL GPA LPI 2578/75%
KG M-185/12% F-13/5% %F-0.07 PRO\$
MR 97 P 0/8% %P+0.04 406
CAN-GPA DEC*20 76%REL CONF 15/99%
MS 11 F&L 10 DS 12 RP 11

MARKRIDGE CMAC SOLOMON ADELLE

12134613 CAN B&W VG-87-2Y-CAN
MS:87 (FA:8 RAH:8 RAW:9) F&L:85 DS:88 RP:87
1-11 2 308 8617 4.6 398 3.4 289
2-11 2 271 9566 4.4 417 3.6 341
3-11 2 277 9400 5.0 467 3.7 351
5-00 2 P49 11733 4.9 579 33 386
LIFE: 4 LAC 29837 4.6 1387 3.5 1053
AVG BCA: 206-264-226 (-4M +32F +7P)
Progeny: 0 EX, 1 VG, 0 GP, 100%GP
1 Dau ME: 9792M 478F 347P (BCA: 185-245-210)
· *Junior Champion, Harting County Holstein Show*

WALNUTLAWN SOLOMON

11775998 CAN A2/A2
GLPI 2695 CONF 12

MARKRIDGE FEVER ARIEL

11435029 CAN B&W *RDC EX-90-3E-CAN
MS:90 (FA:7 RAH:8 RAW:7) F&L:91 DS:89 RP:91
1-11 2 294 9172 3.7 335 3.4 308
3-11 2 303 1223 3.4 414 3.2 393
5-11 2 365 16880 3.5 582 3.2 534
AVG BCA: 252-238-257 (+47M +28F +48P)
Progeny: 0 EX, 1 VG, 1 GP, 100% GP
2 Dau ME: 10691M 491F 365P (BCA: 202-252-221)
· *3rd Senior 2-Year-Old, Quinte Ex '15*

3rd - 4th Dams:

Markridge Perky SS Ashlyn

Veldale Rampage 305 GP-82-2Y-CAN

3-00 2 245 6389 4.3 272 3.4 220

13

1 FLUSH DONATED BY MCINTOSH EMBRYO TRANSFER

- * Includes the flush and freezing of all resulting embryos
- * Flush must be performed at ProVITRO IVF & ET Services at Fradon Donor Facility



PROVITRO
IVF & ET SERVICES

14

1 FLUSH DONATED BY KIRKTON BOVINE SERVICES

- * Includes the flush and freezing of all resulting embryos
- * Flush must be performed at ProVITRO IVF & ET Services at Fradon Donor Facility



PROVITRO
IVF & ET SERVICES



Rosalea Legacy Rozan EX-90-2E
 From the Same Family of Lot 15



MAKER GANGSTER *Robbery* - P

JECANF 13668389 B: 01 Sep 2020

Consigned by:
 Maker Farms Inc.
 519-503-8224



RAPID BAY REGION GANGSTER ET

105762712 CAN
 Region x Vandenberg Amedeo Gorgeous
 (EX-97-3E 15*)

Progeny: 3 EX, 19 VG, 15 GP, 3 G 93% GP

ROSALEA B BUYS A ROSE

12567969 CAN VG-87 (4-03)
 MS: 88 F&L:87 DS:86 RP:85
 2-01 2 305 6430 6.3 404 4.3 274
 3-02 2 288 5335 6.3 338 4.3 227
 4-01 2 164 5032 5.3 267 4.3 217
 LIFE: 3 LAC 14766 6.1 898 4.3 628
 AVG BCA: 220-254-247 (-4M +41F +27P)
 · Silver Award, Aug '19

ROSALEA VELOCITYS BAILEYS

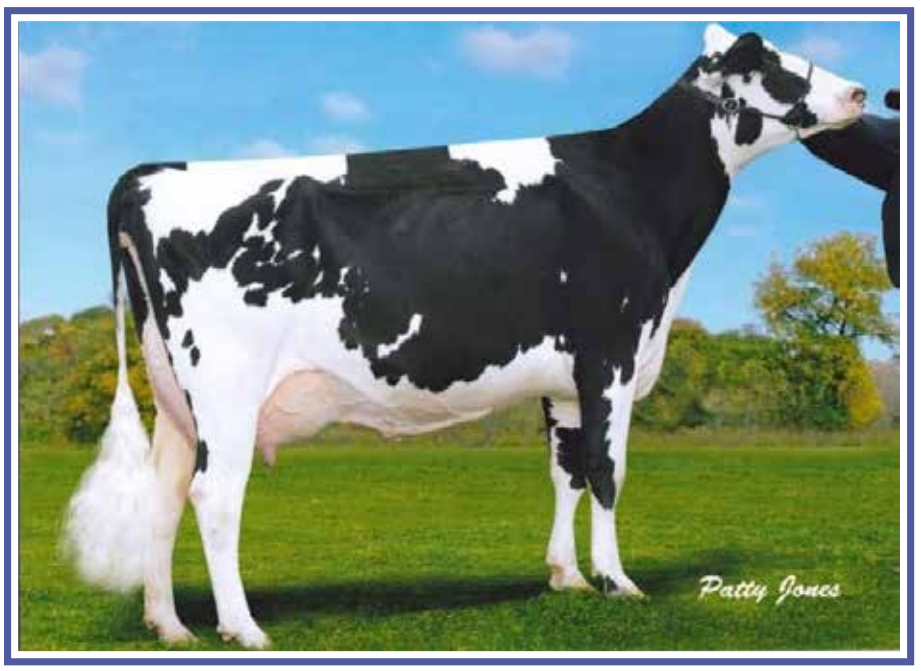
11650168 CAN
 EX-92 (4-02)

ROSALEA DONE BY ROZINA

11650175 CAN VG-87 (6-06)
 MS:88 F&L:85 DS:87 RP:88
 3-03 2 305 6656 5.8 383 4.1 275
 4-04 2 305 6051 6.0 364 4.2 254
 5-11 2 305 8315
 7-05 2 140 7453 5.9 436 4.0 299
 LIFE: 4 LAC 29957 36 1065 4.1 753
 AVG BCA: 221-229-234 (-5M +8F +11P)
 Progeny: 0 EX, 1 VG, 0 GP 100%GP

3rd - 8th Dams:

Rosalea Sends A Rose VG-88
 6-00 2 305 8712 4.9 427 3.7 318
 LIFE: 4 LAC 30498 4.8 1470 3.7 1137
Rosalea Imperial's Rozina VG-88 3*
 7-08 2 305 8306 4.6 385 3.7 310
 LIFE: 7 LAC 47240 4.5 2112 3.7 1732
Rosalea Rennie's Rose SUP-EX 90-2E
 5-06 2 305 8633 4.3 372 3.3 282
 LIFE: 8 LAC 61811 4.1 2533 3.5 2159
Rosalea Jude Top Rose EX-90
 4-07 2 305 7885 4.4 348 3.6 284
Rosalea Silver Top Rose 29W VG-86
 LIFE: 5 LAC 28471 5.1 1464 4.1 1159
Rosalea Meadow Silver Rose 18S GP-81 1*



Ronbeth Baxter Splendid EX-90-5E 2*
3rd Dam of Lot 16



Ronbeth Doorman Sultana VG-87
From the Same Family of Lot 16
Junior Champion, Autumn Opportunity '18
2X HM All-Ontario '17 & '18



RONBETH JACOBY *Shania*

HOCANF 13789381 B&W B: 12 Dec 2020

Consigned by:
Ronbeth Holsteins
705-696-2190



CYCLE DOORMAN JACOBY-ET

8403013614066 *CVF*RDF*BYF*BLF*DPF A2/A2
EX-90-3YR-USA
CAN-GPA DEC*20 99%REL GPA LPI 2646/96%
KG M-390/8% F-3/9% %F+0.11 PRO\$
MR 108 P-23/1% %P-0.08 563
CAN-GPA DEC*20 99%REL CONF 14/99%
MS 10 F&L 10 DS 6 RP 16

RONBETH LAUTRUST SOOKE

13055544 CAN B&W GP-83-3Y-CAN
MS:83 (FA:6 RAH:8 RAW:7) F&L:82 DS:85 RP:83
2-07 2 P71 8936 5.5 489 3.0 268
AVG BCA: 201-298-190

COMESTAR LAUTRUST

107359260 CAN
VG-87-6YR-CAN EXTRA'17 GLPI 3003

RONBETH DOORMAN SHANTELL

12318318 CAN B&W VG-85-3YR-CAN
MS:84 (FA:6 RAH:6 RAW:5) F&L:86 DS:86 RP:85
2-02 2 332 7761 3.7 289 3.2 246
3-03 2 365 10445 3.3 345 3.1 319
AVG BCA: 194-179-185 (-10M -41F -21P)
Progeny: 0 EX, 0 VG, 1 GP 100%GP
1 Dau ME: 10638 581F 314P (BCA: 201-298-190)

3rd - 11th Dams:

Ronbeth Baxter Splendid EX-90-5E 2*
6-01 2 365 13939 3.7 516 3.0 422
LIFE: 8 LAC 101269 3.7 3738 2.9 2978
· 2nd Production Cow, Peterborough Ex. '17
Ronbeth Alto Shelly EX-93-6E 3*
5-02 2 317 11009 4.5 497 3.3 366
LIFE: 8 LAC 78544 4.5 3554 3.4 2643
· Nom. All-Canadian 4-H Jr Calf 1999
· 1st Mature Cow, Peterborough '05 & '07
Ronbeth B C Sal VG-87 10*
7-06 2 365 11303 4.1 458 3.2 362
LIFE: 7 LAC 73981 4.0 2983 3.2 2397
Ronbeth Blackstar Sally
Ronbeth Renegade Sassy VG-85
4-05 2 320 10568 4.5 478 3.2 336
Ronbeth Missile Sadie VG-85 1*
7-09 2 343 11059 4.6 505 3.3 361
LIFE: 8 LAC 72787 4.7 3389 3.5 2532
· 2 Superior Lactations
Ronbeth Stylist Yolanda VG-87 1*
LIFE: 9 LAC 84080 4.3 3656 2.8 2318
Ronbeth Yuletide Bertha VG-86
Ronbeth Telstar Bertha EX-CAN 9*



Hanalee Damion Jazzdale EX-90-3E 1*
3rd Dam of Lot 17



HANALEE KING ROYAL *Jane*

HOCANF 13762382 B&W B: 21 Jul 2020

Consigned by:

Hank & Nancy-Lee
Hazeleger
519-535-0793



PLAIN-KNOLL KING ROYAL-ET

74564764 USA *CDF*CVF*RDF*BYF*BLF*DPF
A2/A2

CAN-GPA DEC*20 94%REL GPA LPI 3053/89%
KG M 401/32% F 63/81% %F+0.42 PRO\$
MR 99 P49/73% %P+0.29 1899
CAN-GPA DEC*20 91%REL CONF 7/89%
MS 10 F&L 5 DS 5 RP -8

HANALEE UNIX JODIE

13067743 CAN B&W GP-83-2Y-CAN
MS:84 (FA:5 RAH:6 RAW:7) F&L:82 DS:84 RP:81
1-11 2 P196 8686 5.3 462 3.4 291
AVG BCA: 233-332-243

CROTEAU LESPERRON UNIX

107567492 CAN
EX-96-7YR-CAN ST*17 GLPI 2943

HANALEE G CHIP JAZZ

12020143 CAN B&W VG-88-4Y-CAN
MS:88 (FA:5 RAH:6 RAW:8) F&L:85 DS:91 RP:85
2-00 2 315 9611 4.3 417 3.4 325
3-00 2 365 12550 4.6 576 3.4 421
4-04 2 365 14602 4.6 671 3.3 476
LIFE: 3 LAC 40126 4.6 1839 3.41357
AVG BCA: 248-294-253 (+8M +28F +8P)
Progeny: 0 EX, 0 VG, 1 GP 100%GP
1 Dau ME: 12332M 648F 401P (BCA: 233-332-243)

3rd - 9th Dams:

Hanalee Damion Jazzdale EX-90-3E 1*

7-05 2 365 14294 3.9 561 3.2 461
LIFE: 8 LAC 90602 3.7 3337 3.2 2889

Hanalee Champion Jazz EX-90-3E

4-03 2 349 13653 4.4 606 3.5 480
LIFE: 6 LAC 71167 4.7 3312 3.5 2465

Hanalee Durham Jasmine VG-86 7*

5-02 2 365 13941 4.3 600 3.2 440
LIFE: 4 LAC 53967 4.1 2208 3.2 1740

Startmore Jodie VG-86 4*

6-01 2 365 13128 4.2 553 3.5 4 5 3
LIFE: 5 LAC 60022 4.3 2602 3.5 2096

· 2 Superior Lactations

Startmore T Threat Tina EX-CAN 8*

6-03 2 365 13101 4.0 523 3.4 450
· 1 Superior Lactation

Jim-Mar-D Astronaut Gail EX-CAN 11*

LIFE: 7 LAC 68157 4.6 3112

· HM All-American 3-Year-Old 1975

Chappells Pat Pass EX-90-USA



Hanalee Lil Chick VG-85-2Y
Maternal Sister to 4th Dam of Lot 18



HANALEE BARDO *Chance*

HOCANF 13762397 B&W B: 25 Aug 2020

Consigned by:

Hank & Nancy-Lee
Hazeleger
519-535-0793



BENNER BARDO

11951553 CAN B&W *CVF*RDF*BYF*BLF*DPF*CNF
A2A2 EX-94-5YR-CAN
CAN-GPA DEC*20 97%REL GPA LPI 3327/92%
KG M 176/23% F 101/98% %F+0.83 PRO\$
MR 101 P 48/72% %P+0.34 2411
CAN-GPA DEC*20 92%REL CONF 10/96%
MS 6 F&L 9 DS 6 RP 9

HANALEE SOLOMON COIN

13067749 CAN B&W

WALNUTLAWN SOLOMON

11775998 CAN A2/A2
GLPI 2695 CONF 12

HANALEE MANUEL CHANCE

12020155 CAN B&W VG-85-2Y-CAN
MS:86 (FA:7 RAH:7 RAW:7) F&L:85 DS:83 RP:88
1-10 2 336 10292 3.7 381 3.3 344
2-11 2 305 11360 3.3 376 3.2 366
LIFE: 2 LAC 21652 3.5 757 3.3 710
AVG BCA: 263-246-266 (+20M -24F +18P)
Progeny: 0 EX, 0 VG, 1 GP 100%GP

3rd - 13th Dams:

Hanalee Brawler Chancy

Hanalee Boxer Cheduba VG-85 VG-MS
3-04 2 303 13575 3.8 513 3.1 420

Willsona Bolton Chelsea VG-86 VG-MS 21*
2-01 2 365 13939 4.1 565 3.5 483

- 1 Superior Lactation
- 5 EX & 17 VG daughters
- Maternal sister to Freelance Sizzle (VG-86 10*), dam of Shottle Silk & Shottle Satin

Gen-I-Beq Convincer Silver VG-88 16*
3-11 3 330 11974 3.7 442 3.0 353

Glen Drummond Splendor VG-86 39*
4-10 2 314 12025 4.2 510 3.2 381

Glen Drummond Aero Flower VG-88 18*

Glen Drummond Shower EX-CAN 14*

Glen Drummond S C Jo Beth EX-CAN 2E 7*

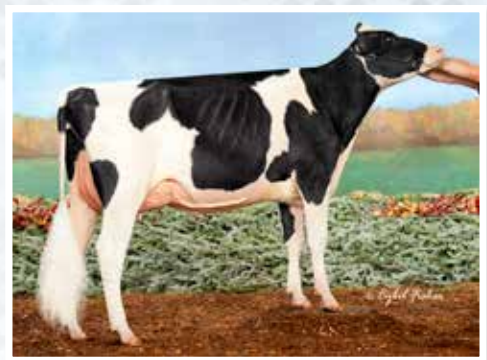
Glen Drummond Matt Beth VG-85 4*

Glen Drummond Marquis Beth VG-CAN

Ferglynn Rag Apple Bertha VG-CAN 3*



Weeks Dundee Anika EX-97-2E
3rd Dam of Lot 19



Milksource Gldndrm Asset-ET VG-86
Grandam of Lot 19



DREAM MAKER DEMPSEY *Anne*

HOCANF 13651401 B&W B: 18 Jul 2020

Consigned by:
Alex Dolson
519-856-2007

LIRR DREW DEMPSEY

61083609 USA B&W *CDC*CVF*RDF*BYF*BLF*DPF
EX-93-11YR-USA EXTRA'11
CAN-GPA DEC*20 99%REL GLPI 2789/99%
KG M -459/7% F 10/19% %F+0.24 PRO\$
MR 107 P 10/16% %P+0.22 1005
CAN-GPA DEC*20 99%REL CONF 12/99%
MS 8 F&L 11 DS 9 RP 7

WEEKSDALE DOORMAN AKIAKO

12709990 CAN B&W GP-83-1Y-CAN
MS:83 (FA:7 RAH:7 RAW:5) F&L:85 DS:83 RP:85
1-10 2 P215 6830 3.7 254 3.4 232
AVG BCA: 187187-197

VAL-BISSON DOORMAN

107281711 CAN B&W A2A2
EX-90-5Y-CAN ST'16 GLPI 2948

MILKSOURCE GLDNDRM ASSET-ET

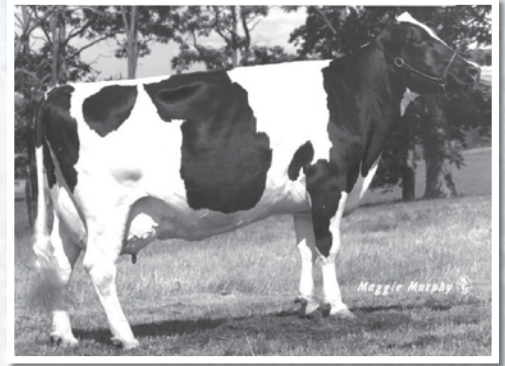
840 3138524481 B&W VG-86-2Y-CAN
MS:86 (FA:7 RAH:9 RAW:7) F&L:87 DS:84 RP:88
1-11 3 311 11304 3.9 436 3.2 395
· All-Canadian Senior Calf 2017
· All-American Senior Calf 2017
· Reserve Junior Champion, TD Classic '17
· Reserve Junior Champion, WDE '17
· Junior Champion, BC Spring Show 2018

ANIKA!!
HM All-Canadian Mature Cow 2018
HM All-American Mature Cow 2018
Reserve All-Canadian 5-Year-Old 2016
Reserve All-American 5-Year-Old 2016
Reserve All-Canadian 4-Year-Old 2015
Nom. All-American 4-Year-Old 2015
HM All-American Junior 2-Year-Old 2013
Nom. All-Canadian Junior 2-Year-Old 2013

3rd - 7th Dams:
Weeks Dundee Anika EX-97-2E-USA
3-11 2 296 12143 3.8 456 3.6 437
Whittier-Farms Gold Anna VG-85-USA 6*
8-04 2 365 15708 4.7 730 3.8 595
· 2 Superior Lactations
BKB Abby-ET EX-95-3E-USA DOM
4-03 2 365 16012 4.1 649 3.6 577
LIFE: 5 LAC 84210 4.0 3337 3.5 2976
Shoremar S Alicia EX-97-3E-USA 13*
8-11 2 362 17350 4.3 748 3.3 576
LIFE: 5 LAC 78823 4.2 3285 3.4 2657
· All-American Mature Cow 2003
· 3X All-Canadian & 2X All-American
Aitkenbrae Starbuck Ada EX-94-2E-USA DOM 4*
5-06 2 356 13633 3.5 473 3.5 476
LIFE: 6 LAC 62475 3.4 2154 3.4 2108
· All-American Senior 3-Year-Old '90



Brookview Tony Charity EX-97 DOM 13*
5th Dam of Lot 20



Hanover-Hill SWD Charity EX-94-2E DOM
4th Dam of Lot 20



PERENNIAL TSTORM *Cabernet*

HOCANF 13619167 B&W B: 17 Mar 2020

Consigned by:
Bryan Weldrick
519-777-8971



BLONDIN THUNDER STORM

110296922 CAN B&W *CDF*CVF*BYF*BLF*DPF
CAN-GPA DEC*20 83%REL GPA LPI 2719/80%
KG M 242/26% F-13/5% %F-0.21 PRO\$
MR 104 P 0/8% %P-0.06 610
CAN-GPA DEC*20 80%REL CONF 17/99%
MS 11 F&L 14 DS 12 RP 15

CADILAC MOGUL CARAMEL

11351954 CAN B&W EX-91-3E-CAN
MS:92 (FA:7 RAH:8 RAW:7) F&L:89 DS:93 RP:90
2-01 2 337 11866 3.6 429 3.0 358
3-02 2 341 14373 3.9 567 3.0 432
4-02 2 246 7423 5.0 372 4.1 302
5-01 2 313 11892 4.0 474 2.9 339
6-01 2 365 13937 4.1 565 3.0 424
7-03 2 P296 12645 3.4 433 2.9 364
LIFE: 6 LAC 72549 3.9 2849 3.1 2233
AVG BCA: 231-246-225 (-1M +11F -7P)
Progeny: 0 EX, 0 VG, 1 GP 100%GP

MOUNTFIELD SSI DCY MOGUL-ET

8403006972816 B&W *POF*CDF*CVF*RD A1A2
EX-93-7YR-USA EXTRA'15 GLPI 2989

CADILAC FC COUNTESSA

8984089 CAN B&W VG-85-3Y-CAN 2*
MS:86 (FA:5 RAH:9 RAW:5) F&L:83 DS:87 RP:86
1-11 2 365 838 4.5 381 3.3 280
3-02 2 330 9760 4.0 392 3.2 311
4-03 2 319 11005 4.4 489 3.2 350
5-03 2 306 10450 4.6 481 3.1 329
6-08 2 101 4192 4.7 196 2.9 122
LIFE: 5 LAC 43805 4.4 1939 3.2 1398
AVG BCA: 196-233-197 (-7M +26F -2P)
Progeny: 1 EX, 0 VG, 2 GP 100%GP
3 Dau ME: 12438M 480F 378P (BCA: 235-246-229)

3rd - 8th Dams:

Hanover-Hill Raider Char-ET EX-90-4E 5*

6-11 2 365 16398 4.0 650 3.3 545
LIFE: 7 LAC 105372 4.3 4553 3.3 3515

- 3 Superior Lactations

Hanover-Hill Swd Charity EX-94-2E DOM 3*

7-01 3 365 12610 4.0 506 3.4 427
LIFE: 4 LAC 53370 4.1 2189 3.4 1794

Brookview Tony Charity EX-97 DOM 13*

5-11 3 365 17714 3.6 642
LIFE: 5 LAC 73956 3.7 2737

- 4X Royal Grand Champion

- 3X World Dairy Expo Grand Champion

- All-Time All-American 4-Year-Old

- 5X All-Canadian

- 4X All-American

Leaderwood Elevation Charm VG-86-USA

Leaderwood L Charmer Dora VG-85 VG-MS
LIFE: 9 LAC 59326 4.4 2588

Leaderwood Ellbank Ideal Dee VG-85-USA



Pine-Tree Finley Minne-ET EX-91 DOM 10*
4th Dam of Lot 21



CASSON *Kangaroo* TANGO

HOCANF 13931809 B&W B: 30 Sep 2020

Consigned by:
Two-To-Tang Farms Inc.
226-802-1774



ST GEN D-LAMBDA ASHBY-ET

840 3132353099 B&W *CDF*CVF*BYF*BLF
*DPF*CNF A2A2
CAN-GPA DEC*20 82%REL GPA LPI 3493/77%
KG M 690/47% F 76/90% %F +0.45 PRO\$
MR 103 P 52/78% %P +0.24 2758
CAN-GPA DEC*20 78%REL CONF 16/99%
MS 15 F&L 12 DS 9 RP 8

LIBERTY-GEN JORDY POLKAROO

13250233 CAN B&W *RDC GP-84-2Y-CAN
MS:87 (FA:9 RAH:7 RAW:7) F&L:87 DS:84 RP:68
2-00 2 P118 9966 3.8 383 3.3 331
AVG BCA: 254-261-263

CYCLE MCGUCCI JORDY-RED

840 3131666411 R&W
GLPI 2680 CONF 17

LIBERTY-GEN AVALANCHE POLKAROO

12697387 CAN B&W VG-85-3Y-CAN
MS:87 (FA:8 RAH:7 RAW:6) F&L:85 DS:87 RP:75
1-11 2 305 9324 4.3 396 3.2 299
2-10 2 238 7770 4.1 322 3.4 265
LIFE: 2 LAC 17094 4.2 718 3.3 564
AVG BCA: 241-73-241 (+7M +36F +4P)
Progeny: 0 EX, 0 VG, 1 GP 100%GP
1 Dau ME: 13444M 509F 435P (BCA: 254-261-263)

3rd - 7th Dams:

Quality Doorman Poka Dot VG-85-CAN VG-MS
5-01 2 365 13998 4.3 602 3.3 462
LIFE: 5 LAC 50235 4.2 2133 3.3 1674
Pine-Tree Finley Minnie-ET EX-91-CAN DOM 10*
6-10 2 354 17493 4.0 699 3.1 535
- Dam of Pine-Tree Sid-ET
Wesswood-HC Rudy Missy-ET EX-92-3E GMD DOM
4-11 3 365 18543 4.1 755 3.4 628
Wesswood Elton Mimi EX-90 GMD DOM
3-05 2 365 16048 3.3 526 3.2 463
Wesswood Mandingo Ivy VG-87 VEEVV
6-05 2 365 16479 3.6 592 3.0 493
LIFE: 5 LAC 65346 3.4 2238 3.1 2001
Wesswood Astro Matt Esther VG-87 GMD DOM
6-08 2 365 14451 3.5 510 3.1 445
Wesswood Bell Claudette VG-87 GMD DOM
9-10 2 365 17604 3.6 627 2.9 517
LIFE 2 3634 127451 3.6 4535 3.1 3912



WINBEL MIRAND *Samara*

HOCANF 13793802 B&W B: 11 Sep 2020
*POC

Consigned by:
Winbel Holsteins
705-325-7491



COOMBOONA ZIPIT MIRAND-PP

1993596 AUS *POS*RDC*CDF*CVF*BYF*BLF A2/A2
CAN-GPA DEC*20 80%REL GPA LPI 3114/75%
KG M 1431/80% F 50/67% %F-0.04 PRO\$
MR 99 P 36/53% %P-0.09 2085
CAN-GPA DEC*20 76%REL CONF 14/99%
MS 13 F&L 8 DS 7 RP 7

GEN-MARK STMATI SANCHEZ

134422312 USA
EX-94-6YR-USA ST*12 GLPI 2049

WINBEL SPICE

11145227 CAN B&W EX-90-4E-CAN
MS:90 (FA:9 RAH:7 RAW:6) F&L:91 DS:89 RP:92
5-01 2 330 10799 4.0 435 3.1 331
6-02 2 296 10870 3.4 373 3.1 333
7-02 2 356 11797 3.5 416 3.0 356
8-04 2 365 12950 3.7 480 3.0 394
LIFE: 4 LAC 47087 3.7 1729 3.1 1437
AVG BCA: 208-206-201 (+15M +3F +6P)
Progeny: 1 EX, 0 VG, 0 GP 100%GP
1 Dau ME: 10215M 388F 314P (BCA: 193-199-190)

3rd - 9th Dams:

Marbro Astronomical Tansy VG-87

Marbro Rudolph Talcolm VG-87

LIFE: 5 LAC 54967 3.6 2003 3.1 1689

Marbro Mason Terra EX 2*

LIFE: 4 LAC 47454 4.3 2021 3.4 1611

Marbro Raider Tierra VG-87 12*

LIFE: 6 LAC 87034 3.6 3106 3.1 2715

Marbro Tammy Dewdrop ET VG-85

Marbro Roxsy Drew EX 5*

LIFE: 8 LAC 71668 4.5 3227 1.4 968

Marbro Echo Dewdrop VG-86 2*

LIFE: 8 LAC 58334 4.7 2755

WINBEL SANCHEZ SHACKLEBOLT

12244061 CAN B&W EX-90-4Y-CAN
MS:91 (FA:8 RAH:8 RAW:6) F&L:90 DS:91 RP:91
2-05 2 283 7683 3.9 299 3.2 243
3-04 2 350 9456 3.8 362 3.2 305
LIFE: 2 LAC 17139 3.9 661 3.2 548
AVG BCA: 194-200-191 (0M -4F -4P)



HANALEE DOORMAN *Heart*

HOCANF 13762387 B&W B: 31 Jul 2020

Consigned by:
Hank & Nancy-Lee
Hazeleger
519-535-0793



VAL-BISSON DOORMAN

107281711 CAN B&W *POF*CDF*CVF*RDF A2A2
EX-90-5YR-CAN ST*16
CAN-GPA DEC*20 99%REL GPA LPI 2948/99%
KG M -122/14% F 31/41% %F+0.32 PRO\$
MR 106 P29/42% %P+0.28 1400
CAN-GPA DEC*20 99%REL CONF 11/98%
MS 9 F&L 7 DS 11 RP 1

STANTONS APPLICABLE

12189029 CAN
VG-86-4YR-CAN GLPI 3351

HANALEE SEEVER HART

11160981 CAN B&W VG-88-3Y-CAN
MS:89 (FA:8 RAH:8 RAW:8) F&L:87 DS:88 RP:88
2-03 2 272 8630 3.3 285 3.2 277
3-04 2 299 11245 3.36 404 3.0 336
4-02 2 343 9776 3.5 339 3.4 328
5-07 2 313 9735 3.7 355 3.1 297
6-11 2 238 8432 3.6 305 3.1 261
AVG BCA: 202-192-200 (-44M -71F -49P)
Progeny: 0 EX, 1 VG, 0 GP 100%GP
1 Dau ME: 12703M 509F 410P (BCA: 240-261-248)

3rd - 11th Dams:

Hanalee Morty Heart GP-83

4-01 2 332 11938 3.4 401 3.2 378

Wil-Hart Man Aloha-ET VG-85 VG-MS 15*

8-02 2 365 17431 3.6 624 3.1 533

LIFE: 4 LAC 70483 3.7 2637 3.3 2334

- 4 EX & 16 VG daughters

Miss Blackstar Alcidia-ET EX-90 GMD DOM

2-05 2 365 13806 4.2 581 3.5 484

Conant-Acres Mark Anna VG-89 GMD DOM

2-01 2 365 11780 3.8 451 3.4 400

Ken-Ric Bell Adrian EX-92 GMD DOM

4-03 2 365 15753 3.5 558 3.4 533

Ken-Ric Elevation Andria EX-90-USA

LIFE: 7 LAC 52642 4.0 2080

Ken-Ric Matt Sky Ann VG-86-USA

Skyway Black E EX-90-2E-USA

Skyway Echo Pico VG-88-USA

HANALEE APPLICABLE HUE

13244443 CAN B&W



Fradon Encount Jodie EX-94 16*
3rd Dam of Lot 24



Fradon Armani Jordey EX-94
From the Same Family as Lot 24
Nom. All-Canadian 5-Year-Old 2019
Nom. All-American 5-Year-Old 2019



RANHAVEN *Jemma*

HOCANF 11254535 R&W B: 02 Sep 2019 // **PG to Sexed Mirand-PP due in September**

Consigned by:
Craig Ranter
519-424-9656

RIVERDOWN UNSTOPABULL

11801450 CAN R&W *CDF*CVF*BYF*BLF*DPF
CAN-GPA DEC*20 91%REL GMLPI 2731/84%
KG M -377/9% F -14/5% %F+0.00 PRO\$
MR 104 P-17/3% %P-0.05 883
CAN-GPA DEC*20 86%REL CONF 12/99%
MS 11 F&L 12 DS 4 RP 5

FRADON DOORMAN JELINA

12133878 CAN B&W *RDC VG-86-4Y-CAN
MS:87 (FA:8 RAH:8 RAW:6) F&L:87 DS:84 RP:85
2-01 RX 310 7417 4.7 349 3.5 261
3-00 RX 234 7013 4.0 282 3.4 240
AVG BCA: 169-196-182 (-91M -81F -79P)

VAL-BISSON DOORMAN

107281711 CAN B&W A2A2
EX-90-5Y-CAN ST*16 GLPI 2948

FRADON DESTRY JACEY

11025888 CAN B&W *RDC EX-91-3E-CAN
MS:91 (FA:8 RAH:7 RAW:7) F&L:93 DS:91 RP:89
5-07 2 324 11709 4.2 490 3.3 391
6-07 RX 305 12992 4.4 576 3.0 389
7-09 RX 365 13472 4.1 545 3.1 422
LIFE: 7 LAC 65328 4.1 2673 3.2 2079
AVG BCA: 207-229-208 (-5M +3F -5P)
Progeny: 3 EX, 1 VG, 1 GP 100%GP
5 Dau ME: 11591M 468F 373P (BCA: 219-240-226)

3rd - 9th Dams:

Fradon Encount Jodie EX-94-CAN 16*
5-08 2 365 13779 4.9 671 3.5 486
- All-American R&W Mature Cow 2008
- HM All-Canadian R&W Mature Cow 2008
Fradon Rudolph Jodie EX-2E-CAN 22*
4-03 2 365 15076 4.5 671 3.2 485
LIFE: 5 LAC 60306 3.9 2380 3.2 1953
- 1 Superior Lactation
- 11 EX & 12 VG daughters - 100%GP
Bridon Inspira Jodie EX-CAN 4*
3-05 2 299 8625 4.1 354 3.2 278
Bridon Threat Janice VG-86-CAN
5-04 2 365 9343 4.8 449 3.6 338
Bridon Empress Jody ET VG-85-CAN
5-03 2 365 9871 4.6 457 3.4 335
LIFE: 7 LAC 60299 4.1 2484 3.5 2093
Moeracres Rockette Jean VG-88-USA 3*
3-10 2 316 8369 3.9 326
Moeracres Audrey Joan EX-92-2E-USA



Knonaudale Minutemaid GP-83
Dam of Lot 25



Knonaudale Mudpie EX-94-2E
3rd Dam of Lot 25



Knonaudale Orangecrush EX-93 2*
Grandam of Lot 25



LILYKING UNIX *Fanta*

HOCANF 13597034 B&W B: 03 Mar 2020

Consigned by:
Lilyking Farm
613-484-7466

JASMINE!!
Holstein Canada Cow of the Year Nominee 2019
Reserve All-Canadian Production Cow 2017
All-Ontario Production Cow 2017
HM All-Ontario Mature Cow 2015
Grand Champion, Autumn Opportunity '17
Grand Champion, Northumberland '17
Grand Champion, Stormont '14
Reserve Grand Champion, Northumberland '13
Reserve Grand Champion, Quinte Ex. '13
1st Longtime Production, Ontario Summer '17
1st 5-Year-Old, Eastern ON Champ & Stormont '14

3rd - 9th Dams:
Knonaudale Mudpie EX-94-2E-USA
4-08 2 305 13662 4.6 625 3.3 449
· Reserve All-American Junior 3-Year-Old 2015
· HM All-Canadian Junior 3-Year-Old 2015
· Res. Intermediate Champion, Ontario Summer '15
Knonaudale Jasmine EX-96-4E-CAN 7*
8-02 2 365 15242 4.9 746 3.4 519
LIFE: 6 LAC 77382 4.5 3518 3.5 2747
Knonaudale Elsy EX-92-2E 7*
Knonaudale Anna VG-88-CAN EX-MS 4*
7-00 2 365 14000 4.3 603 3. 4478
LIFE: 5 LAC 72604 4.3 3126 3.6 2605
Knonaudale Toodie GP-83-2YR-CAN VG-MS 4*
3-09 2 339 13295 3.8 501 3.4 451
LIFE: 8 LAC 88229 3.7 3273 3.3 2944
Knonaudale Perpetua VG-87-CAN 6*
6-02 2 365 14551 3.9 564 3.3 474
LIFE: 5 LAC 61915 3.8 2378 3.4 2101
Knonaudale Liz VG-88-CAN 5*
LIFE: 6 LAC 57572 4.3 2478 3.5 1994

CROTEAU LESPERRON UNIX
107567492 CAN *CVF*RDF*BYF*BLF*DPF*CNF
EX-96-7YR-CAN ST'17
CAN-GPA DEC*20 99%REL GPA LPI 2943/98%
KG M 756/51% F 23/32% %F-0.05 PRO\$
MR 97 P 21/29% %P-0.04 1461
CAN-GPA DEC*20 99%REL CONF 12/99%
MS 12 F&L 9 DS 1 RP 7

KNONAUDALE MINUTEMAID
12456778 CAN B&W GP-84-3Y-CAN
MS:88 (FA:8 RAH:8 RAW:7) F&L:81 DS:86 RP:74
1-11 2 235 6858 6.0 412 3.8 261
2-10 2 P223 10982 5.3 582 3.7 403
AVG BCA: 218-325-252 (-75M +8F -57P)
· 1st Junior 2-Year-Old, Frontenac '19

VAL-BISSON DOORMAN
107281711 CAN B&W A2A2
EX-90-5Y-CAN ST'16 GLPI 2948
KNONAUDALE ORANGECRUSH
11669000 CAN B&W EX-93-5Y-USA 2*
2-01 2 290 10401 4.3 450 3.3 343
2-11 2 365 13431 4.7 626 3.3 463
4-07 2 365 12823 4.9 623 3.4 437
Progeny: 0 EX, 6 VG, 3 GP 100%GP
9 Dau ME: 12120M 536F 415P (229-275-251)
· Nom. All-Canadian Junior 3-Year-Old 2017
· Nom. All-American Junior 3-Year-Old 2017



Lilyking Doorman Agatha VG-87
Grandam of Lot 26



Trent Valley Goldchip Abra 6 EX-90 3*
3rd Dam of Lot 26



LILYKING KINGBOY *Abria*

HOCANF 13597037 B&W B: 04 Mar 2020

Consigned by:

Lilyking Farm
613-484-7466
Trekili Holsteins
613-329-2649
Bonnechere Holsteins
613-432-7755

MORNINGVIEW MCC KINGBOY-ET

72044077 USA *CDF*CVF*RDF*BYF*BLF*DPF
A2/A2 EX-92-4Y-USA ST '17
CAN-GPA DEC*20 99%REL GPA LPI 2959/98%
KG M 1356/77% F 32/42% %F-0.16 PRO\$
MR 102 P 41/61% %P-0.03 1633
CAN-GPA DEC*20 99%REL CONF 9/95%
MS 9 F&L 4 DS 6 RP 3

LILYKING MOGUL ABSOLUTION

12135601 CAN B&W VG-85-2Y-CAN
MS:85 (FA:9 RAH:8 RAW:4) F&L:84 DS:86 RP:86
1-11 3 334 12046 4.1 488 3.1 371
AVG BCA: 289-312-277 (-12M +19F -11P)

MOUNTFIELD SSI DCY MOGUL-ET

840 3006972816
EX-93-7Y-USA EXTRA'15 GLPI 2989

LILYKING DOORMAN AGATHA

12135568 CAN B&W A2A2 VG-87-2Y-CAN
MS:88 (FA:8 RAH:8 RAW:8) F&L:86 DS:89 RP:85
2-00 2 363 14255 4.4 625 3.3 475
AVG BCA: 318-371-323
Progeny: 0 EX, 1 VG, 0 GP 100%GP
1 Dau ME: 15296M 609F 458P (289-312-277)
· *HM Grand Champion, Frontenac '18*
· *1st Junior 2-Year-Old, Ontario Spring '18*
· *3rd Junior Yearling, Frontenac '17*

3rd - 10th Dams:

Trent Valley Goldchip Abra 6 EX-90-CAN 3*
4-11 2 365 15623 4.1 632 3.1 491
· *Topped the Trent Valley Dispersal at \$41,500*
· *All-Canadian 4-H Senior Calf 2015*
· *All-Ontario 4-H Senior Calf 2015*
· *Reserve All-Ontario Senior Calf 2015*
Kingsway Dundee Abra Codabra EX-90-USA 24*
2-02 2 365 10118 3.9 397 3.4 342
· *12 EX & 18 VG daughters (2 @ 95)*
· *All-Canadian Summer Yearling 2007*
· *All-Canadian 4-H Summer Yearling 2007*
Kingsway Terrason Allie EX-95-2E-CAN 8*
6-02 2 365 16915 4.6 785 3.4 574
LIFE: 4 LAC 63005 4.4 2762 3.5 2176
· *Holstein Canada Cow of the Year 2016*
· *Reserve All-Canadian Senior 3-Year-Old 2006*
· *Nom. All-Canadian 4-Year-Old 2007*
· *All-Ontario 2006 & 2007; HM All-Ontario 2009*
Kingsway Progress Ashley EX-CAN 7*
7-02 2 365 15822 3.3 526 3.0 477
LIFE: 5 LAC 70435 3.4 2391 3.0 2117
Nelcam Tab Astra EX-3E-CAN 6*
7-08 2 365 13423 3.7 501 3.2 429
LIFE: 7 LAC 78545 3.5 2788 3.2 2543
· *Reserve Grand Champion, Northumberland '96*
Nelcam Prestar Astra VG-88-CAN 3*
4-00 2 365 9777 3.4 333 3.3 322
Nelcam Count Alice EX-CAN
6-07 2 365 11655 3.4 397
Nelcam Leader Astra EX-CAN 2*



Fraeland Loyola Surprise VG-86-2Y
Dam of Lot 27



Snowbiz Brewmaster Swan VG-88 2*
Grandam of Lot 27
Former #1 GLPI Cow



FRAELAND ATOMIC *Spice* RED

Consigned by:
 Fraeland Farms
 519-820-2728

HOCANF 13443649 R&W B: 12 Mar 2020
 CAN-GPA DEC*20 77%REL GPA LPI 3057/73%
 KG M 1616/95% F 68/96% %F+0.05 PRO\$
 MR 105 P 50/95% %P-0.04 2107
 CAN-GPA DEC*20 73%REL CONF 9/95%
 MS 8 F&L 9 DS 3 RP 4

LARCREST ATOMIC-RED-ET

840 3149236420 *CVF*BYF*BLF*DPF*CNF A1/A2
 CAN-GPA DEC*20 80%REL GPA LPI 3217/76%
 KG M 1614/85% F 71/87% %F+0.07 PRO\$
 MR 104 P 56/83% %P+0.03 2476
 CAN-GPA DEC*20 75%REL CONF 11/98%
 MS 10 F&L 6 DS 5 RP 5

FRAELAND LOYOLA SURPRISE

12482054 CAN R&W VG-86-2Y-CAN
 MS:85 (FA:8 RAH:8 RAW:6) F&L:86 DS:87 RP:88
 1-10 2 365 14163 3.5 488 3.3 464
 4-00 RX P168 16314 3.2 527 3.1 497
 LIFE: 2 LAC 35425 3.5 1230 3.3 1164
 AVG BCA: (325-288-317) +71M +28F +61P)
 Progeny: 0 EX, 1 VG, 2 GP, 100%GP
 3 Dau ME: 14185M 550F 454P (BCA: 268-282-275)

ZIMMERVIEW WONKA LOYOLA-P

73926711 USA *PO *RDC A2/A2
 GLPI 2697

SNOWBIZ BREWMASTER SWAN

108250958 CAN B&W *RDC VG-88-5Y-CAN 2*
 MS:88 (FA:7 RAH:8 RAW:8) F&L:88 DS:87 RP:90
 2-03 2 365 14324 5.0 719 3.4 492
 5-05 RX 365 19122 3.8 718 3.2 618
 LIFE: 2 LAC 47123 4.4 2059 3.4 1625
 AVG BCA: 318-374-326 (+78M +121F +80P)
 Progeny: 0 EX, 5 VG, 1 GP 100%GP
 5 Dau ME: 15931M 614F 496P (BCA: 301-315-300)
 · 1 Superior Lactation
 · Former #1 GLPI Cow

3rd - 13th Dams:

Gen-I-Beq Snowman Spring VG-85-CAN 6*
 2-01 3 365 13034 3.3 432 3.2 411
Gen-I-Beq Bolton Secretly VG-87-CAN 4*
 2-01 2 365 13823 4.4 602 3.4 473
 · 1 Superior Lactation
 · Grandam of Snowbiz Sympatico Sofia, former
 #1 GTPI, GPA-LPI & RZG Red Heifer (4/14)
Gen-I-Beq Goldwyn Secret *RC VG-87-CAN 18*
 5-05 2 365 13868 4.5 630 3.4 471
 · 1 Superior Lactation
 · Global R&W Cow of the Year 2011
 · Red Impact Cow of the Year 2011
Gen-I-Beq Durham Sherry VG-87-CAN 8*
 5-02 2 365 18160 3.9 714 3.2 575
 · 1 Superior Lactation
Glen Drummond Splendor VG-86 39*
 4-10 2 314 12025 4.2 510 3.2 381
Glen Drummond Aero Flower VG-88 18*
Glen Drummond Shower EX-CAN 14*
Glen Drummond S C Jo Beth EX-CAN 2E 7*
Glen Drummond Matt Beth VG-85 4*
Glen Drummond Marquis Beth VG-CAN
Ferglynn Rag Apple Bertha VG-CAN 3*



Comestar Lautamai Man O Man VG-87 18*

Grandam of Lot 28



Comestar Lamadona Doorman EX-94-2E

Full Sister to Dam of Lot 28



MAPEL WOOD *Lipgloss*

HOCANF 11254540 B&W B: 19 Mar 2020

* RDC

Consigned by:

Craig Ranter
519-424-9656

RIVERDOWN UNSTOPABULL

11801450 CAN R&W *CDF*CVF*BYF*BLF*DPF
CAN-GPA DEC*20 91%REL GMLPI 2731/84%
KG M -377/9% F -14/5% %F+0.00 PRO\$
MR 104 P-17/3% %P-0.05 883
CAN-GPA DEC*20 86%REL CONF 12/99%
MS 11 F&L 12 DS 4 RP 5

MAPEL WOOD DOORMAN LEGEND

12900957 CAN B&W
· 2nd Intermediate Yearling, Ontario Spring '19

Full Sister:

COMESTAR LAMADONA DOORMAN EX-94-2E 12*

- Reserve All-American Junior 3-Year-Old 2016*
- HM All-Canadian Junior 3-Year-Old 2016*
- HM All-Canadian Junior 2-Year-Old 2015*
- HM All-Canadian 4-H Summer Yearling 2014*
- Nom. All-American Junior 2-Year-Old 2015*
- 21 Very Good daughters to date!*

VAL-BISSON DOORMAN

107281711 CAN B&W A2A2
EX-90-5Y-CAN ST'16 GLPI 2948

COMESTAR LAUTAMAI MAN O MAN

106676836 CAN B&W VG-87-2Y-CAN 18*
MS:87 (FA:7 RAH:9 RAW:8) F&L:87 DS:87 RP:87
2-01 2 365 18298 4.2 764 3.4 622
5-01 2 365 18117 3.9 707 3.4 617
LIFE: 2 LAC 54114 4.1 2224 3.7 2015
AVG BCA: 365-404-382 (+81M +89F +89P)
Progeny: 4 EX, 6 VG, 11 GP, 1 G 95%GP
23 Dau ME: 14926M 595F 512P (BCA: 282-305-310)
· Dam of Mapel Wood Kingboc Lacey (EX-94)
· Junior All-American Senior 3-Year-Old 2018

3rd - 9th Dams:

Comestar Lautama Goldwyn VG-88-CAN 22*
6-04 2 365 21193 4.6 983 3.3 690
· 2 Superior Lactations
· Several sons in AI

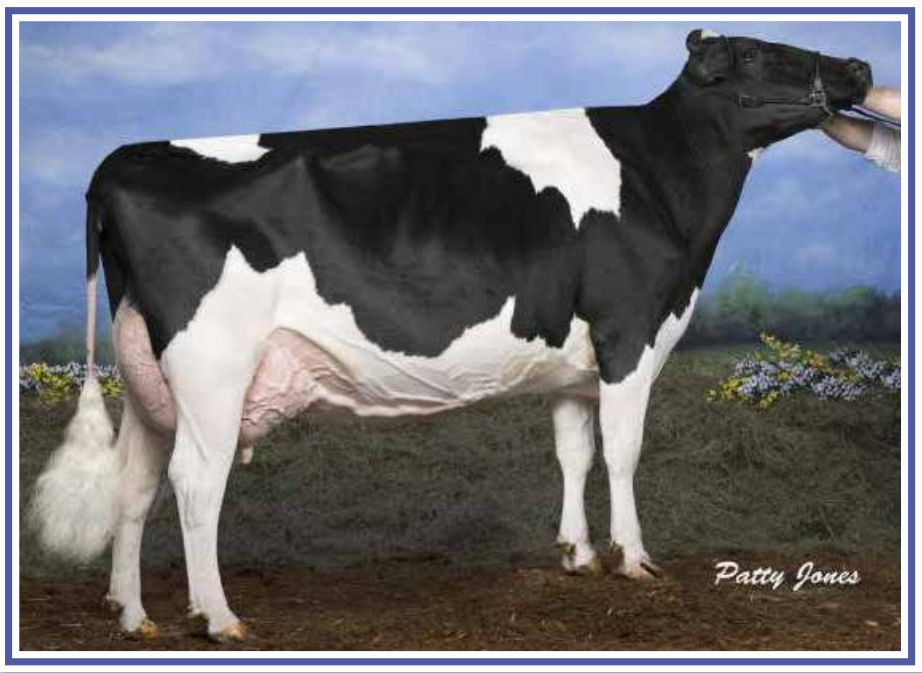
Comestar Lautamie Titanic VG-89-CAN 33*
4-05 2 365 21125 4.5 957 3.4 723
· Reserve All-Canadian Junior 2-Year-Old 2006
· All-Quebec Junior 2-Year-Old 2006
· 3rd 5-Year-Old, Quebec Spring Show '09

Comestar Lautelma Igniter VG-89-CAN 21*
4-02 2 365 22591 4.7 1063 3.5 784
2-01 2 365 16987 4.1 702 3.5 603
· Dam to the popular bull Comestar LAUTHORITY!
· Former #2 Index Cow in Canada

Comestar Lautelle Emerson VG-85-CAN 2*
2-02 2 365 13743 4.0 543 3.6 496
Comestar Lausan Black VG-87-CAN 23*
5-04 2 365 16801 4.3 720 3.6 598
LIFE: 3 LAC 49100 4.4 2148 3.8 1883
· Dam to Comestar STORMATIC!!

· 22 classified daughters in Canada: 100% GP
Comestar Laurie Sheik VG-88-CAN 23*
6-09 2 365 13546 4.5 303 3.4 461
· Cow of the Year 1995
· Nom. All-Canadian 4-Year-Old 1991
· HM All-Canadian Senior 2-Year-Old 1989
· HM All-American Senior 2-Year-Old 1989

Elysa Anthony Lea EX-CAN 15*
6-02 2 365 16225 3.9 634 2.9 476
· 3rd Mature Cow, Victoriaville '98



Devans Stormatic Lola VG-89 11*
3rd Dam of Lot 29



Stonebed Jacoby Izzy VG-88
Full Sister to Lot 29



KILLCROFT JACOBY *Izzy*

HOCANF 13734735 B&W B: 18 Apr 2020

Consigned by:
Killcroft Holsteins
519-462-2675

CYCLE DOORMAN JACOBY-ET

8403013614066 *CVF*RDF*BYF*BLF*DPF A2/A2
EX-90-3YR-USA
CAN-GPA DEC*20 99%REL GPA LPI 2646/96%
KG M-390/8% F-3/9% %F+0.11 PRO\$
MR 108 P-23/1% %P-0.08 563
CAN-GPA DEC*20 99%REL CONF 14/99%
MS 10 F&L 10 DS 6 RP 16

KILLCROFT BROKAW ISABELLE

11955335 CAN B&W VG-86-4Y-CAN
MS:86 (FA:9 RAH:6 RAW:4) F&L:85 DS:89 RP:82
2-06 2 365 12368 3.2 398 2.9 352
4-01 2 365 11304 3.2 366 2.9 330
5-07 2 297 9287 3.4 317 3.0 277
LIFE: 3 LAC 35830 3.33 1180 2.9 1049
AVG BCA: 206-216-222 (+18M -8F -1P)
Progeny: 0 EX, 1 VG, 0 GP 100%GP
1 Day ME: 11432M 437F 348P (BCA: 216-224-211)
· Nom. All-Ontario Senior Yearling 2016
· 1st Senior Yearling, Oxford '16
· 2nd Senior Yearling, Perth-Waterloo '16

MR ATWOOD BROKAW-ET

140602463 USA B&W A2A2
ST '15 GLPI 2549

CRANHOLME PLANET IMPALLA

11176491 CAN B&W VG-85-3Y-CAN
MS:86 (FA:7 RAH:6 RAW:3) F&L:86 DS:85 RP:85
2-01 2 314 9301 3.2 300 3.0 275
3-00 2 303 9601 3.5 332 3.1 300
4-00 2 365 10849 3.3 353 3.0 327
LIFE: 3 LAC 31832 3.3 1059 3.1 977
AVG BCA: 209-185-196 (+12M -8F +9P)
Progeny: 0 EX, 2 VG, 0 GP 100%GP
2 Dau ME: 10268M 359F 317P (BCA: 194-184-192)

3rd - 10th Dams:

Devans Stormatic Lola VG-89-CAN 11*

5-00 2 365 18846 3.8 711 3.0 568
LIFE: 2 LAC 47777 3.8 1839 3.2 1551

· 1 Superior Lactation

· HM All-Ontario 5-Year-Old 2009

Silky Mason Mansola EX-CAN

5-04 2 365 17744 3.6 645 3.3 579
LIFE: 4 LAC 57790 3.7 2139 3.3 1926

· 2 Superior Lactations

· HM All-Canadian 4-H Junior Calf 1999

· Nom. All-Canadian Intermediate Calf 1999

· Grand Champion, N. Niagara '01

Elkendale Cleitus Impala-ET VG-87-CAN 19* DOM

3-03 2 365 13354 4.1 548 3.4 457

· 1 Superior Lactation

Elkendale Valiant Inka EX-90-USA DOM

4-06 2 365 12066 4.5 538 3.3 400
LIFE: 5 LAC 52018 4.4 2282 3.4 1755

Elkendale Elevation Inky VG-87-USA

LIFE: 9 LAC 67917 4.1 2806 3.3 2255

Elkendale Admiral Ines VG-86-USA

LIFE: 7 LAC 59957 3.6 2146

Elkendale Ivanhoe Inez VG-87-USA

Elkendale Sela Isabel EX-90-USA



Hazelcrest Lheros Lulu Allison EX-92-3E 6*
4th Dam of Lot 30



RANHAVEN *Lyster*

HOCANF 11254541 B&W B: 11 May 2020

Consigned by:
Craig Ranter
519-424-9656

SIEMERS OCT APPLE-CRISP-ET

840 3134506808 *RDC*CDF*CVF*BYF*BLF*DPF
CAN-GPA DEC*20 94%REL GPA LPI 2879/88%
KG M 782/52% F 32/42% %F+0.02 PRO\$
MR 101 P13/20% %P-0.11 1369
CAN-GPA DEC*20 91%REL CONF 11/98%
MS 7 F&L 12 DS 6 RP 7

RANHAVEN LYNDSEY
11254529 CAN B&W

LIRR DREW DEMPSEY

61083609 USA B&W *CDC
EX-93-11Y-USA EXTRA'11 GLPI 2789

HAZELCREST JETT LULU ALMA

12092431 CAN B&W EX-90-2E-CAN
MS:91 (FA:8 RAH:7 RAW:7) F&L:89 DS:90 RP:93
2-08 RX 324 10404 4.7 490 3.6 375
3-08 RX 288 10953 4.5 491 3.8 420
4-06 RX 303 9069 4.9 441 3.6 327
5-05 RX P257 13471 4.1 551 3.6 491
LIFE: 4 LAC 42699 4.5 1904 3.7 1560
AVG BCA: 229-275-263 (-49M -15F -22P)

3rd - 10th Dams:

Hazelcrest Goldwyn Lulu Alana EX-90-2E-CAN
6-05 RX 365 14373 4.7 698 3.3 468
LIFE: 7 LAC 86880 3.8 3326 2.9 2555
Hazelcrest Lheros Lulu Allison EX-92-3E-CAN 6*
5-05 2 365 14802 4.5 663 3.3 493
LIFE: 5 LAC 64646 4.3 2777 3.3 2154
Hazelcrest R Lulu VG-87-CAN 4*
3-08 2 365 14071 4.4 618 3.4 482
LIFE: 9 LAC 109287 4.2 4620 3.3 3633
Hanoverhill I Lulu-Red EX-91-USA 4*
4-02 3 365 15232 3.7 566 3.3 496
Hanoverhill Sheik Lulu EX-94-3E GMD DOM 4*
9-03 2 365 17699 3.8 673 3.3 591
LIFE: 6 LAC 93608 3.9 3690 3.5 3263
Tora Triple Threat Lulu EX-96-USA GMD DOM 11*
LIFE: 7 LAC 60509 3.9 2352
- Res. All-Canadian Mature Cow 1981
- Nom. All-Canadian Mature Cow 1980
- HM All-American 3-Year-Old 1978
- Reserve Grand Champion, Royal '81
Ormsby Lougo Alta EX-90-2E-USA GMD
8-05 2 365 11136 3.7 408
Ormsby Alta Pride VG-85-USA
11-10 2 365 10359 3.4 352



Nipponia R D Lizabeth EX-96-3E

Dam of Lot 31



Kingsway Goldwyn Elvira EX-90

Maternal Sister to Lot 31

HM All-Ontario Senior 2-Year-Old 2018



WERRCROFT LAUTRUST

Limewire

HOCANF 110837287 B&W B: 01 Jun 2020

Consigned by:

Kingsway Farms
705-778-3389
Ferme Vinbert
450-778-4203

LIZABETH!!

*HM All-Canadian Longtime Production 206
HM All-Ontario Mature Cow 2016
HM Grand Champion, Ontario Summer '16
Grand Champion, Northumberland '12 & '14
Grand Champion, Ontario County '12 & '14*

COMESTAR LAUTRUST

107359260 CAN CVF**RDF**BYF*BLF*DPF*CNF A2A2
VG-87-6YR-CAN EXTRA'17
CAN-GPA DEC*20 99%REL GPA LPI 3003/96%
KG M 1288/75% F 71/87% %F +0.19 PRO\$
MR 101 P 60/87% %P +0.14 1882
CAN-GPA DEC*20 98%REL CONF 7/89%
MS 6 F&L 9 DS 0 RP 8

NIPPONIA R D LIZABETH

7782151 CAN B&W EX-96-3E-CAN 4*
MS:96 (FA:9 RAH:8 RAW:7) F&L:95 DS:96 RP:96
2-03 2 290 8256 3.1 252 3.1 253
3-05 2 313 11768 3.6 420 3.2 382
4-08 2 365 15803 3.5 558 3.1 493
6-06 2 365 17187 3.4 577 3.2 550
8-05 2 365 19102 4.0 767 3.2 603
LIFE: 5 LAC 77213 3.6 2778 3.2 2468
AVG BCA: 266-253-265 (+46M +21F +42P)
Progeny: 8 EX, 8 VG, 10 GP, 2 G 93%GP
29 Dau ME: 11379M 450F 367P (BCA: 215-231-222)
· 1 Superior Lactation

REGANCREST DUNDEE-ET

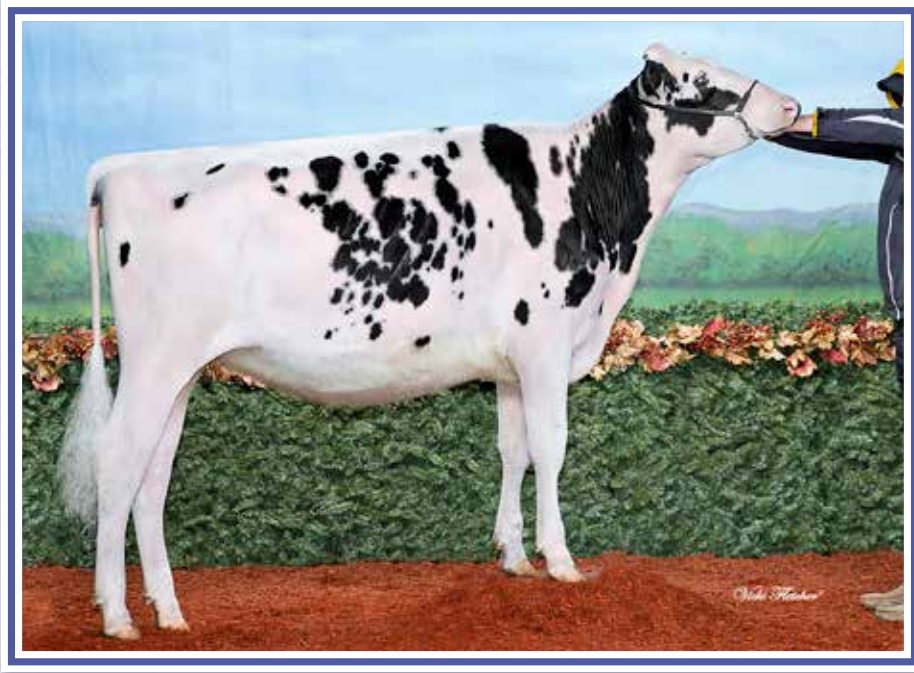
127640114 CAN B&W
EX-95-6YR-USA ST'04 GLPI 1745

ALTAGEN LEE LENA

9255033 CAN B&W EX-91-2E-CAN 4*
MS:89 (FA:6 RAH:8 RAW:7) F&L:92 DS:94 RP:93
2-08 2 283 8105 3.2 257 3.4 275
3-07 2 365 13131 3.4 451 3.2 415
5-03 2 365 20622 3.1 642 3.0 617
7-02 2 365 11765 2.8 334 3.0 353
LIFE: 4 LAC 61698 3.2 1965 3.1 1922
AVG BCA: 244-208-237 (+83M +52F +75P)
Progeny: 2 EX, 0 VG, 1 GP 100%GP
4 Dau ME: 12756M 495F 406P (BCA: 241-254-246)
· 1 Superior Lactation
· 1st 5-Year-Old, Ontario Summer '06
· 2nd Senior 3-Year-Old, Ontario Spring '04
· 2nd Senior 3-Year-Old, Dufferin & Wellington '04
· 3rd Senior 3-Year-Old, Autumn Opportunity '04

3rd - 6th Dams:

Acme Star Lily EX-2E-CAN EX-94-USA 8*
5-03 2 365 16247 3.7 607 3.2 520
LIFE: 5 LAC 76808 3.7 2809 3.2 2473
· 3X All-Canadian, 1X Reserve & 2X HM All-Canadian
· 2X All-American & 2X Reserve All-American
· Reserve All-Canadian Mature Cow 1999
· Grand Champion, Royal '97, 98 & '99
· Grand Champion, WDE '98
· Grand Champion, Calgary Spring '98
· Reserve Grand Champion, WDE '97
Acme Anthony Lil VG-88-CAN
LIFE: 6 LAC 57839 4.3 2508 3.7 2156
Kruisdale Sheik Lilly VG-85-CAN
5-06 2 345 9752 4.5 434 3.5 341
Kruisdale Mark Snowwhite VG-85-CAN 1*
5-06 2 359 9986 3.8 381



Kentville Lumineer Rosabel VG-87

Grandam of Lot 32



RENSIEM KILLCROFT *Rustler*

HOCANF 13734736 B&W B: 02 Jun 2020

Consigned by:

Killcrot Holsteins
519-462-2675
Frank Meisner
519-535-4150

MONUMENT IMPRESSION-ET

66382657 USA *CVF*RDF*BYF*BLF*DPF*CNF*XIF
A2/A2 EX-95-9YR-CAN ST*13
CAN-GPA DEC*20 99%REL GPA LPI 2863/99%
KG M 715/48% F 14/22% %F-0.11 PRO\$
MR 105 P13/20% %P-0.09 1333
CAN-GPA DEC*20 99%REL CONF 11/98%
MS 7 F&L 8 DS 9 RP 12

KILLCROFT RENSIEM ROSETTE

12770456 CAN B&W GP-84-2Y-CAN
MS:84 (FA:7 RAH:7 RAW:4) F&L:83 DS:87 RP:83
2-00 2 P253 7809 3.9 304 3.4 269
AVG BCA: 206-216-222

KH CINDERDOOR-ET

969096292 NLD B&W A2A2
GLPI 2409

KENTVILLE LUMINEER ROSABEL

12329772 CAN B&W VG-87-3Y-CAN
MS:87 (FA:8 RAH:6 RAW:6) F&L:88 DS:87 RP:85
1-11 2 308 6701 3.7 248 3.1 205
2-11 2 291 8008 3.7 296 3.1 250
4-00 2 P219 8732 3.9 339 3.2 277
LIFE: 3 LAC 21422 3.7 797 3.1 658
AVG BCA: 182-185-178 (-14M -12F -19P)
Progeny: 0 EX, 0 VG, 1 GP 100%GP
1 Dau ME: 10903M 421F 367P (BCA: 206-216-222)
· HM All-Canadian 4-H Summer Yearling 2017
· Res. All-Ontario 4-H Summer Yearling 2017
· HM All-Ontario Summer Yearling 2017
· Junior Champion, Junior All-Ontario Show '17
· 5th Summer Yearling, Royal '17

3rd - 12th Dams:

Kentville Attic Ratatouille EX-91-3E-CAN EX-MS
6-11 2 365 17480 4.7 829 3.2 566
LIFE: 5 LAC 66416 4.6 3037 3.4 2244

Kentville Raspberry Liqueur VG-87-CAN
4-05 2 352 14556 3.8 554 3.1 458
LIFE: 4 LAC 46725 4.0 1884 3.2 1496

Kentville Primetime Raspberry EX-91-2E-CAN EX-MS
5-04 2 335 17110 4.4 757 3.2 544
LIFE: 4 LAC 49452 4.2 2095 3.3 1626

· 1st Junior 3-Year-Old, Dufferin & Wellington '10

Hollywell Rosalee Jed EX-90-2E-CAN 2*
6-00 2 324 12638 4.3 541 3.2 399

Acme Star Rosie EX-CAN
5-09 2 365 10761 3.9 419 3.2 346
· Nom. All-Canadian Senior 3-Year-Old 1994

Acme Mattador Rosa EX-5E-CAN 2*
7-04 2 305 11179 3.7 417 3.2 356
LIFE: 7 LAC 65357 3.7 2419 3.3 2125

· Res. Grand Champion, Westerner Champ '91

Acme Toppa That VG-86-CAN VG-MS

Acme Rosa VG-85-CAN VG-MS

Acme Lady Ada EX-CAN 3*

· Nom. All-Canadian 2-Year-Old 1978

· Grand Champion, Alberta Spring Show '81

Escomb Ada Centurion EX-CAN 2*



Ronbeth Braxton Peony EX-92-4E
 Dam of Lot 33



Ronbeth Alexander Pearl EX-94-2E
 From the Same Family as Lot 33



RONBETH TATOO *Prisha*

HOCANF 13789354 B&W B: 04 Jun 2020

Consigned by:
 Ronbeth Holsteins
 705-696-2190

DUCKETT CRUSH TATOO-ET

840 3137052923 *CDF*CVF*RDF*BYF*BLF*DPF
 CAN-GPA DEC*20 81%REL GPA LPI 2723/79%
 KG M -215/12% F -23/3% %F-0.14 PRO\$
 MR 108 P 4/11% %PO.10 916
 CAN-GPA DEC*20 79%REL CONF 12/99%
 MS 10 F&L 8 DS 6 RP 9

RONBETH BRAXTON PEONY

11466190 CAN B&W EX-92-4E-CAN
 MS:91 (FA:8 RAH:8 RAW:6) F&L:91 DS:94 RP:92
 2-01 2 336 10975 4.1 445 3.0 324
 3-03 2 333 12722 3.8 486 2.9 365
 4-03 2 365 14701 4.4 641 3.1 451
 5-09 2 362 14668 4.0 585 2.8 417
 7-00 2 365 14512 4.2 611 2.7 396
 8-02 2 P250 10514 4.9 517 2.8 291
 LIFE: 6 LAC 80292 4.2 3367 2.9 2316
 BCA: 247-277-221 (+35M +38F +8P)
 · 1st Longtime Production, Peterborough Ex '19
 · 3rd Junior 3-Year-Old, Peterborough Ex '15
 · 3rd Junior 2-Year-Old, Peterborough Ex '14

REGANCREST S BRAXTON-ET

61898423 USA B&W
 EX-95-5Y-USA ST'13 GLPI 1657

RONBETH S S PANDORA

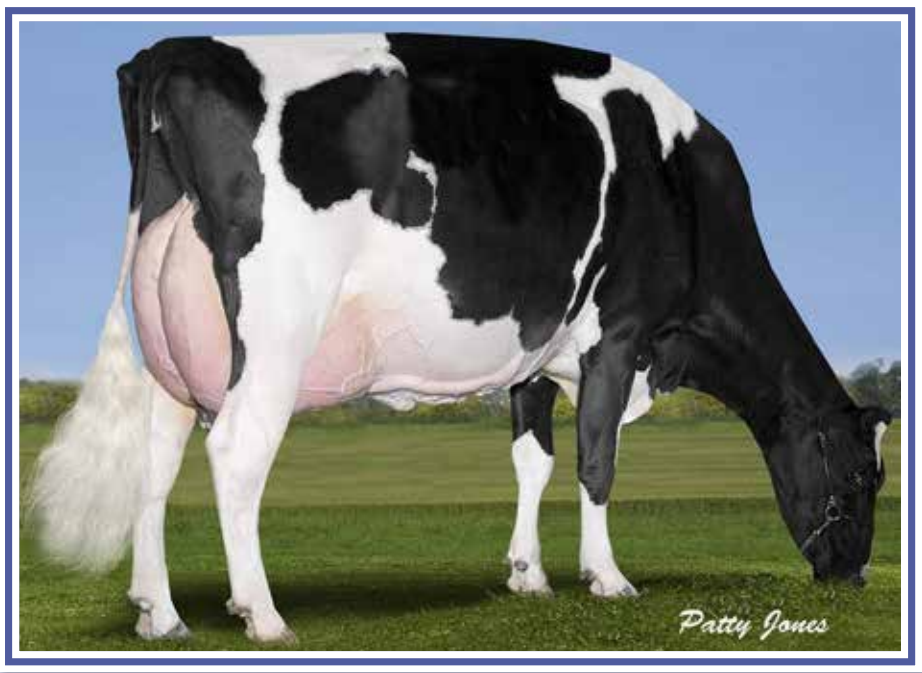
7612028 CAN B&W EX-90-3E-CAN
 MS:92 (FA:8 RAH:9 RAW:7) F&L:91 DS:88 RP:93
 2-04 2 316 10141 4.2 422 3.1 311
 3-05 2 324 9524 4.2 402 3.3 317
 4-06 2 351 15247 4.2 638 3.0 461
 5-07 2 365 14710 4.3 636 3.2 464
 6-10 2 162 6243 3.6 223 2.9 182
 LIFE: 5 LAC 56280 4.2 2346 3.1 1755
 BCA: 236-264-229 (+28M +44F +19P)
 Progeny: 1 EX, 0 VG, 0 GP 100%GP
 1 Dau ME: 13020M 540F 365P (246-277-221)

**RONBETH ALEXANDER PEARL
 EX-94-2E-USA**

Total Performance Winner, Central NY Show '19
 All-NY Senior 2-Year-Old 2013
 Res. Intermediate Champion, NY State Fair '13
 1st Senior 2-Year-Old, Maxville Spring '13
 3rd Senior 2-Year-Old, Eastern National '13
 Alexander x EX-91-6E Leduc x
 VT Paulette EX-6E 4*

3rd - 7th Dams:

Ronbeth Tahoe Pearl VG-87-CAN 3*
 4-07 2 323 11481 3.1 353 3.1 360
 LIFE: 6 LAC 51470 3.3 1696 3.0 1560
 · 2nd Intermediate Calf, Peterborough Ex '03
Ronbeth Stardust Polly EX-91-4E-CAN 1*
 4-06 2 340 12432 3.3 412 3.1 387
 LIFE: 6 LAC 62185 3.3 2048 3.1 1938
 · 2nd Summer Yearling, Northumberland '00
 · 2nd Summer Yearling, Peterborough '00
Ronbeth VT Paulette EX-6E-CAN 4*
 6-06 2 341 13369 3.3 436 3.1 411
 LIFE: 10 LAC 115448 3.4 3874 3.1 3560
Ronbeth Sheik Patrice EX-CAN 4*
 LIFE: 8 LAC 97443 4.5 4373 2.4 2348
 · Grand Champion, East-Central Champion '84 & '85
 · 1st 4-Year-Old, Peterborough '84
Ronbeth Unique Patsy VG-87-CAN 3*
 10-07 2 361 11626 4.3 504
 LIFE: 10 LAC 95916 4.5 4307
 · 3 Superior Lactations



Calbrett Goldwyn Layla EX-96-2E 20*

Grandam of Lot 34



Lylehaven Lila Z EX-94 25*

3rd Dam of Lot 34



UNIQUE UNSTOPABULL *Latte*

HOCANF 13813103 B&W B: 08 Jun 2020

* RDC

Consigned by:

Unique Holsteins
519-323-7128

RIVERDOWN UNSTOPABULL

11801450 CAN R&W *CDF*CVF*BYF*BLF*DPF
CAN-GPA DEC*20 91%REL GMLPI 2731/84%
KG M -377/9% F -14/5% %F+0.00 PRO\$
MR 104 P-17/3% %P-0.05 883
CAN-GPA DEC*20 86%REL CONF 12/99%
MS 11 F&L 12 DS 4 RP 5

CALBRETT ALEXANDER LIZA

11658891 CAN B&W EX-93-3E-CAN 2*
MS:95 (FA:8 RAH:8 RAW:8) F&L:92 DS:92 RP:91
2-05 2 299 8884 4.5 396 3.6 316
3-05 2 361 11655 4.7 543 3.8 438
4-07 2 205 8170 4.0 329 3.7 302
6-01 2 365 13548 4.4 599 3.7 500
7-05 2 P246 11028 4.5 498 3.7 403
LIFE: 5 LAC 53033 4.5 2368 3.7 1958
AVG BCA: 210-250-241 (-29M -20F -15P)
Progeny: 1 EX, 2 VG, 2 GP, 100%GP
4 Dau ME: 13073M 6001F 464P (BCA: 247-308-281)

GOLDEN-OAKS ST ALEXANDER-ET

61133837 CAN A2A2
EX-94-8Y-USA ST*12 GLPI 2241

CALBRETT GOLDWYN LAYLA-ET

7978112 CAN B&W EX-96-2E-CAN 20*
MS:95 (FA:9 RAH:7 RAW:9) F&L:96 DS:97 RP:96
2-08 2 365 12857 4.2 539 3.4 436
4-07 2 365 15268 3.8 583 3.4 515
6-04 2 365 19072 3.8 727 3.3 636
8-03 2 365 22176 4.5 1001 3.4 742
LIFE: 4 LAC 78585 4.2 3268 3.4 2703
AVG BCA: 309-342-326(+99M +140F +118P)
Progeny: 6 EX, 16 VG, 7 GP, 4 G 88%GP
35 Dau ME: 14079M 536F 463P (BCA: 266-275-280)

LAYLA!!

*All-American Production Cow 2015
Nom. All-Canadian Mature Cow 2015
Reserve All-Canadian Mature Cow 2013
All-Ontario Mature Cow 2013
HM All-Quebec Mature Cow 2013
Nom. All-Canadian 4-Year-Old 2011
HM Grand Champion, Victoriaville '15
HM Grand Champion, Quebec Spring '14 & '15
Grand Champion, Ontario Summer '13
Grand Champion, Victoriaville '13*

3rd - 6th Dams:

Lylehaven Lila Z EX-94-CAN 25*

4-05 2 365 22272 4.0 889 3.5 769
LIFE: 3 LAC 75385 3.9 2950 3.4 2586

- 5X All-Canadian Title or Nominee

Lylehaven Form Laura-ET EX-94-3E GMD DOM 8*

6-02 2 35 16107 4.2 673 3.1 494
LIFE: 5 LAC 88764 4.0 3507 3.1 2728

- HM All-American 4-Year-Old 2003

- Reserve All-Canadian Junior 3-Year-Old 2002

Thiersant Lili Starbuck-ET EX-94-5E-USA 6*

5-00 2 358 13694 4.6 629 3.2 444
LIFE: 8 LAC 108321 4.7 5120 3.4 3685

Ivyhall Astro Jet Ronie VG-86-CAN 1*

5-04 2 305 8379 4.2 349 3.3 278

- 1st 5-Year-Old, Sorel '93



Dandyland Sid Abigail

Maternal Sister to Lot 35

Nominated All-Ontario Summer Yearling 2018



DANDYLAND DOORMAN *Aurora*

HOCANF 13602689 B&W B: 19 Jun 2020

Consigned by:

Dandyland Farm
905-939-7174

VAL-BISSON DOORMAN

107281711 CAN B&W *POF*CDF*CVF*RDF A2A2
EX-90-5YR-CAN ST*16
CAN-GPA DEC*20 99%REL GPA LPI 2948/99%
KG M-122/14% F31/41% %F+0.32 PRO\$
MR 106 P29/42% %P+0.28 1400
CAN-GPA DEC*20 99%REL CONF 11/98%
MS 9 F&L 7 DS 11 RP 1

DANDYLAND AUSTINS AMBER

12056575 CAN B&W VG-85-3Y-CAN
MS:83 (FA:3 RAH:7 RAW:6) F&L:90 DS:88 RP:90
1-11 2 310 10142 3.8 388 3.3 339
2-11 2 320 13047 4.1 533 3.4 445
3-11 2 305 12191 3.9 480 3.4 409
4-11 2 300 12999 4.0 514 3.4 440
5-11 2 P237 10549 4.5 475 3.4 361
LIFE: 5 LAC 57217 4.0 2295 3.4 1929
AVG BCA: 257-280-273 (+25M +29F +31P)
Progeny: 0 EX, 1 VG, 1 GP 100%GP
2 Dau ME: 11432M 470F 390P (BCA: 216-241-236)

VELTHUIS SGC BETS R ON

11426866 CAN B&W
VG-86-3Y-CAN ST*16 GLPI 2767

DANDYLAND ANNABELLES AUSTIN

10892065 CAN B&W VG-88-4Y-CAN
MS:91 (FA:7 RAH:8 RAW:6) F&L:89 DS:87 RP:87
2-01 2 346 12054 4.2 512 3.4 411
3-03 2 317 12985 4.4 565 3.3 425
4-04 2 365 13745 4.2 579 3.2 477
5-08 2 117 5212 3.6 187 2.9 151
LIFE: 4 LAC 44935 4.2 1889 3.3 1464
AVG BCA: 268-306-271 (+38M +67F +45P)
Progeny: 0 EX, 1 VG, 0 GP 100%GP
1 Dau ME: 13603M 546F 449P (257-280-272)
· 1 Superior Lactation

3rd - 13th Dams:

Dandyland Arlies Annabelle EX-90-3E-CAN
7-03 2 298 13519 3.7 505 3.2 436
LIFE: 6 LAC 73105 4.1 2980 3.3 2384
Dandyland Outside Arlie EX-90-8E-CAN 5*
8-01 2 365 14799 4.1 601 3.0 445
LIFE: 10 LAC 133337 3.9 5162 3.0 4052
Dandyland Cherokee Alisa VG-85-CAN 5*
6-10 2 331 11519 3.6 417 3.4 397
LIFE: 9 LAC 88123 3.9 3393 3.4 2999
Dandyland Typemaker Addie VG-85-CAN
5-03 2 338 11357 3.2 367 3.0 346
Dandyland Moderator Angie VG-85-CAN
4-02 2 309 9329 3.0 282 2.9 271
Sunny Maple Christopher Agnes GP-82-CAN
LIFE: 9 LAC 61278 3.5 2135 3.2 1935
Quality Agnes C EX-CAN 1*
5-08 2 305 8287 3.9 321 3.5 294
Quality Unique Agnes VG-85-CAN
11-02 2 365 10490 4.7 495 3.4 361
LIFE: 8 LAC 62885 4.5 2822
G H G Citation Agnes VG-87-CAN 2*
9-01 2 365 11009 4.2 463
G H G Model Ranger Achilles Grace EX-CAN 4*
LIFE: 15 LAC 90249 3.9 3492
G H G Chico Doris Achilles VG-CAN 1*



Carldot Goldwyn Carlin EX-93
3rd Dam of Lot 36



Carldot Lee Carmen EX-90-4E 7*
4th Dam of Lot 36



CARLDOT DISCJOCKEY *Connie*

HOCANF 13708242 B&W B: 22 Jun 2020

Consigned by:
Carldot Farms
519-274-3084

CLAYNOOK DISCJOCKEY

840 3141428446 B&W *CDF*CDF*CVF*RDF*
BYF*BLF*DPF*CNF
CAN-GPA DEC*20 81%REL GPA LPI 3381/77%
KG M 1111/67% F 79/91% %F +0.32 PRO\$
MR 108 P 63/90% %P +0.21 2761
CAN-GPA DEC*20 78%REL CONF 10/96%
MS 14 F&L 3 DS 1 RP -2

CARLDOT CLASSIC CHERISHED

12583892 CAN B&W VG-85-3Y-CAN
MS:85 (FA:8 RAH:7 RAW:5) F&L:84 DS:84 RP:85
2-00 RX 306 9120 4.4 400 3.3 297
2-11 RX P234 12505 4.7 589 3.4 419
AVG BCA: 265-325-272 (-13M +8F -19)

OCONNORS CLASSIC

12111803 CAN B&WA2/A2
VG-85-3Y-CAN GLPI 2761

MTELGIN BAXTER CINNAMON

10885360 CAN B&W EX-92-2E-CAN 2*
MS:92 (FA:8 RAH:7 RAW:8) F&L:93 DS:91 RP:94
2-02 2 365 11465 4.8 555 3.4 394
3-04 2 365 12919 4.9 629 3.4 443
4-07 2 365 13518 5.2 706 3.3 447
6-01 RX 365 13229 5.0 656 3.4 449
LIFEL 4 LAC 54508 5.0 2741 3.4 1869
AVG BCA: 240-314-251 (+24M +78F +34P)
Progeny: 2 EX, 3 VG, 1 GP 100%GP
6 Dau ME: 12703M 597F 431P (BCA: 240-306-261)

3rd - 9th Dams:

Carldot Goldwyn Carlin EX-93-USA
4-05 2 365 15735 4.3 671 3.2 504
· 1st Aged Cow, NY State Fair Jr Show '14
· Grand Champion, Wisconsin State Fair '12
· 1st Senior 2-Year-Old, Wisconsin State Fair '10
· 1st Intermediate Yearling, Dufferin & Wellington '09
Carldot Lee Carman EX-90-4E 7*
6-10 2 365 12471 4.0 493 3.2 398
LIFE: 6 LAC 678117 4.1 2807 3.4 2324
Carldot Skychief Carla VG-86-CAN
3-03 2 307 11355 3.2 359 3.3 375
Carldot Prelude Lightning EX-4E 4*
5-10 2 365 11908 4.3 514 3.4 404
LIFE: 6 LAC 66098 4.3 2821 3.4 2261
Carldot Tony Lassie ET VG-86 9*
8-05 2 365 11593 3.6 418 3.1 364
LIFE: 5 LAC 49507 3.9 1952 3.2 1605
Walker-Farm C I F Madge EX-CAN 10*
8-00 2 357 10926 4.6 500
LIFE: 9 LAC 82519 4.4 3637
· Grand Champion, Elgin 1975
Walker-Farm Sears Margie VG-85-USA
LIFE: 8 LAC 51760 3.7 1927



Sunny-Valley Durham Electra EX-95 2*
3rd Dam of Lot 37



DUTCHOLM DOORMAN *Eclectic*

HOCANF 13791643 B&W B: 05 Jul 2020

Consigned by:
Milky Hills Farm Inc.
519-846-5430

VAL-BISSON DOORMAN

107281711 CAN B&W *POF*CDF*CVF*RDF A2A2
EX-90-5Y-CAN ST'16
CAN-GPA DEC*20 99%REL GPA LPI 2948/99%
KG M-122/14% F 31/41% %F+0.32 PRO\$
MR 106 P29/42% %P+0.28 1400
CAN-GPA DEC*20 99%REL CONF 11/98%
MS 9 F&L 7 DS 11 RP 1

DUTCHOLM UNIX ECCENTRIC
13176806 CAN B&W

CROTEAU LESPERRON UNIX

107567492 CAN
EX-96-7Y-CAN ST'17 GLPI 2943

DUPASQUIER CARISMA ELECTRIC

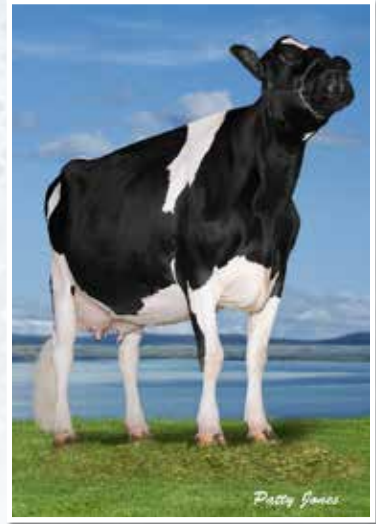
11386209 CAN B&W VG-85-5Y-CAN
MS:88 (FA:8 RAH:7 RAW:6) F&L:80 DS:87 RP:85
3-02 2 286 7833 4.4 343 3.4 263
4-01 2 306 8397 4.2 356 3.6 298
5-07 2 197 7504 3.8 285 3.4 254
LIFE: 3 LAC 23734 4.1 984 3.4 815
AVG BCA: 172-202-187 (-47M -29F -27P)

3rd - 7th Dams:

Sunny-Valley Durham Electra EX-95-USA 2*
3-03 2 365 19146 2.9 547 3.0 581
LIFE: 4 LAC 64161 3.7 2344 3.1 2011
· All-American Junior 3-Year-Old 2004
· Reserve All-American 5-Year-Old 2006
· Intermediate & Reserve Grand, WDE '04
Sunny-Valley Blackmark Erin EX-90-USA
3-03 2 365 15581 4.1 640 3.2 502
Sunny-Valley Airliner Ebony EX-90 GMD DOM
3-06 2 365 20176 5.0 1002 3.5 706
Sunny-Valley Black Ellen-ET EX-90-2E GMD DOM
6-03 2 365 17845 4.0 716 3.0 528
LIFE: 6 LAC 91178 3.9 3583 3.0 2764
Sunny-Valley Mark Elsie VG-87-USA
2-03 2 365 12773 3.6 455 2.8 361



Comestar Goldwyn Lilac VG-89 44*
3rd Dam of Lot 38



Lylehaven Lila Z EX-94 25*
4th Dam of Lot 38



WINDKNOLL BARDO *Lilac*

HOCANF 13599056 B&W B: 17 Jun 2020

Consigned by:
Windknoll Holsteins
519-846-2157

BENNER BARDO

11951553 CAN B&W *CVF*RDF*BYF*BLF*DPF*CNF
A2A2 EX-94-5YR-CAN
CAN-GPA DEC*20 97%REL GPA LPI 3327/92%
KG M 176/23% F 101/98% %F+0.83 PRO\$
MR 101 P 48/72% %P+0.34 2411
CAN-GPA DEC*20 92%REL CONF 10/96%
MS 6 F&L 9 DS 6 RP 9

EARLEN DOORMAN LILLIAN

12520785 CAN B&W EX-91-4Y-CAN
MS:91 (FA:7 RAH:7 RAW:8) F&L:86 DS:95 RP:95
1-11 RX 295 9027 2.8 256 3.1 283
3-04 RX 297 12279 3.9 482 3.4 413
4-03 RX P233 13509 3.2 426 3.5 471
LIFE: 3 LAC 32336 3.3 1076 3.3 1071
BCA: 259-211-270 (-3M -67F -9P)

VAL-BISSON DOORMAN

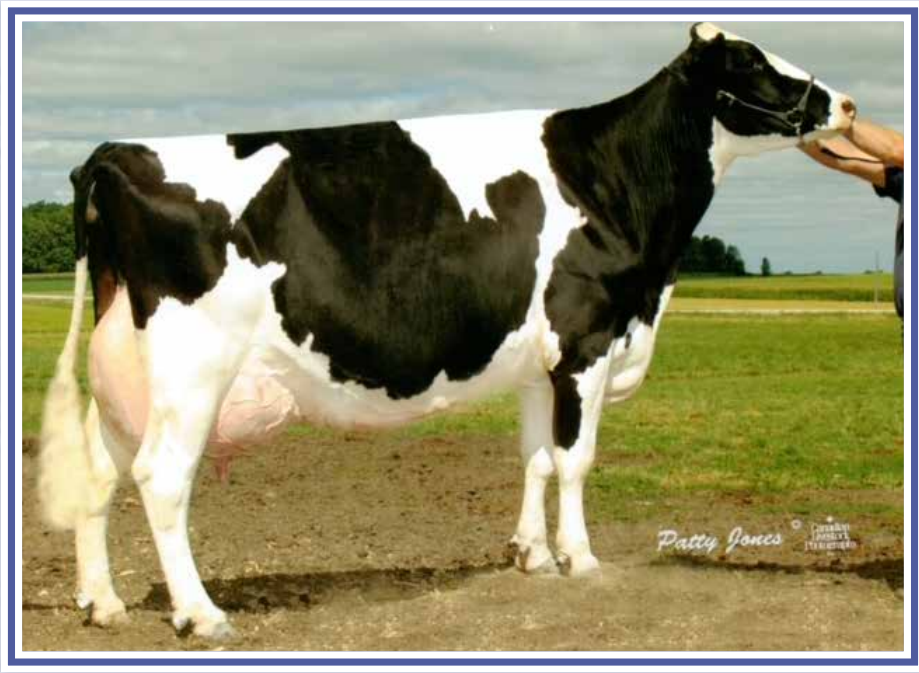
107281711 CAN B&W A2A2
EX-90-5Y-CAN ST*16 GLPI 2948

MAPEL WOOD SHOTTLE LACEY

106676836 CAN B&W VG-89-4Y-CAN 3*
MS:90 (FA:8 RAH:8 RAW:8) F&L:89 DS:94 RP:86
2-03 2 365 13356 3.5 467 3.2 424
4-06 2 365 17719 3.5 612 3.1 552
LIFE: 2 LAC 43873 3.5 1553 3.2 1418
AVG BCA: 292-272-283 (+63M +21F +47P)
Progeny: 2 EX, 3 VG, 4 GP, 2 G 82%GP
12 Dau ME: 13973M 534F 446P (BCA: 264-274-270)

3rd - 7th Dams:

Comestar Goldwyn Lilac VG-89-CAN 44*
4-06 2 365 22935 4.6 1048 3.4 790
· Cow of the Year Nominee 2012 & 2013
· Nom. All-Canadian Senior 2-Year-Old 2008
· All-Ontario Senior 2-Year-Old 2008
Lylehaven Lila Z EX-94-CAN 25*
4-05 2 365 22272 4.0 889 3.5 769
LIFE: 3 LAC 75385 3.9 2950 3.4 2586
· 5X All-Canadian Title or Nominee
Lylehaven Form Laura-ET EX-94-3E GMD DOM 8*
6-02 2 35 16107 4.2 673 3.1 494
LIFE: 5 LAC 88764 4.0 3507 3.1 2728
· HM All-American 4-Year-Old 2003
· Reserve All-Canadian Junior 3-Year-Old 2002
Thiersant Lili Starbuck-ET EX-94-5E-USA 6*
5-00 2 358 13694 4.6 629 3.2 444
LIFE: 8 LAC 108321 4.7 5120 3.4 3685
Ivyhall Astro Jet Ronie VG-86-CAN 1*
5-04 2 305 8379 4.2 349 3.3 278
· 1st 5-Year-Old, Sorel '93



Cedarpatch Wade Chocolate EX-90-4E 6*

3rd Dam of Lot 39



CEDARPATCH ALLIGATOR *Chaching*

HOCANF 13838016 B&W B: 28 Jul 2020

Consigned by:

Cedarpatch Holsteins
226-230-5262

STANTONS ALLIGATOR-ET

840 3128769279 *CVF*BYF*BLFA1/A2
CAN-GPA DEC*20 97%REL GPA LPI 3509/94%
KG M 1242/73% F 64/82% %F+0.14 PRO\$
MR 106 P 46/68% %P+0.04 2573
CAN-GPA DEC*20 95%REL CONF 17/99%
MS 15 F&L 13 DS 8 RP 9

CEDARPATCH MCCUTCHEN CHICA

12072657 CAN B&W EX-90-4Y-CAN
MS:91 (FA:9 RAH:6 RAW:7) F&L:91 DS:93 RP:83
2-02 2 351 10813 4.3 464 3.4 367
3-04 2 335 12389 4.3 535 3.4 420
4-05 2 275 11224 4.3 487 3.4 385
5-04 2 P205 11797 4.5 534 3.6 424
LIFE: 4 LAC 43040 4.3 1860 3.4 1469
AVG BCA: 242-281-258 (-21M +15F -8)
Progeny: 0 EX, 1 VG, 0 GP 100%GP
1 Dau ME: 12226M 558F 401P (BCA: 231-286-243)
-2nd Junior 2-Year-Old, Bruce-Grey '17

DE-SU BKM MCCUTCHEN 1174-ET

69990138 USA B&W
EX-93-4Y-USA ST '15

CEDARPATCH GOLDWYN CHRISTIE

9719008 CAN B&W EX-90-5E-CAN 1*
MS:92 (FA:9 RAH:8 RAW:3) F&L:87 DS:94 RP:86
3-03 2 335 12196 4.6 565 3.5 423
4-04 2 365 13516 4.6 625 3.4 461
6-08 2 325 12357 4.2 520 3.3 411
8-09 2 365 13571 4.0 548 3.4 467
LIFE: 7 LAC 85909 4.3 3.4 2927
AVG BCA: 227-263-243 (-5M +23F +11P)
Progeny: 2 EX, 1 VG, 0 GP, 100%GP
3 Dau ME: 13391M 538F 433P (BCA: 253-276-262)

3rd - 8th Dams:

Cedarpatch Wade Chocolate EX-90-4E-CAN 6*
4-10 2 365 12722 4.2 531 3.6 455
LIFE: 8 LAC 90472 4.2 3799 3.5 3177
Cedarpatch Pete Carolyn GP-83-2Y-CAN
4-02 2 330 10075 4.0 401 3.6 359
Burglee Ultimate Carisma VG-86-CAN 1*
6-02 2 358 8505 3.7 313 3.5 298
Burglee Stylist Carolin VG-86-CAN
7-04 2 365 10602 4.2 448 3.2 339
Burglee Sound Coral VG-85-CAN 2*
8-08 2 365 11932 3.5 423 3.0 360
LIFE: 6 LAC 60052 3.7 2209 3.2 1910
Burglee Citation Cora VG-85-CAN



Crovalley Goldchip Alexa EX-92

Maternal Sister to Dam of Lot 40



CROVALLEY DENVER *Alean*

HOCANF 13863212 B&W B: 02 Sep 2020

Consigned by:

Crovalley Holsteins
705-931-2697

BRENLAND DENVER

12074893 CAN *CDF*CVF*BYF*BLF A1/A2
CAN-GPA DEC*20 94%REL GPA LPI 2866/90%
KG M 954/60% F 54/71% %F0.15 PRO\$
MR 104 P 29/42% %P-0.03 1530
CAN-GPA DEC*20 91%REL CONF 8/92%
MS 8 F&L 5 DS 4 RP 5

CROVALLEY ALECK ALPACA

13258821 CAN B&W VG-85-2Y-CAN
MS:87 (FA:7 RAH:8 RAW:7) F&L:80 DS:88 RP:87
1-11 RX P176 12161 3.6 443 3.3 403
AVG BCA: 314-306-325

CROVALLEY DOORMAN ALECK

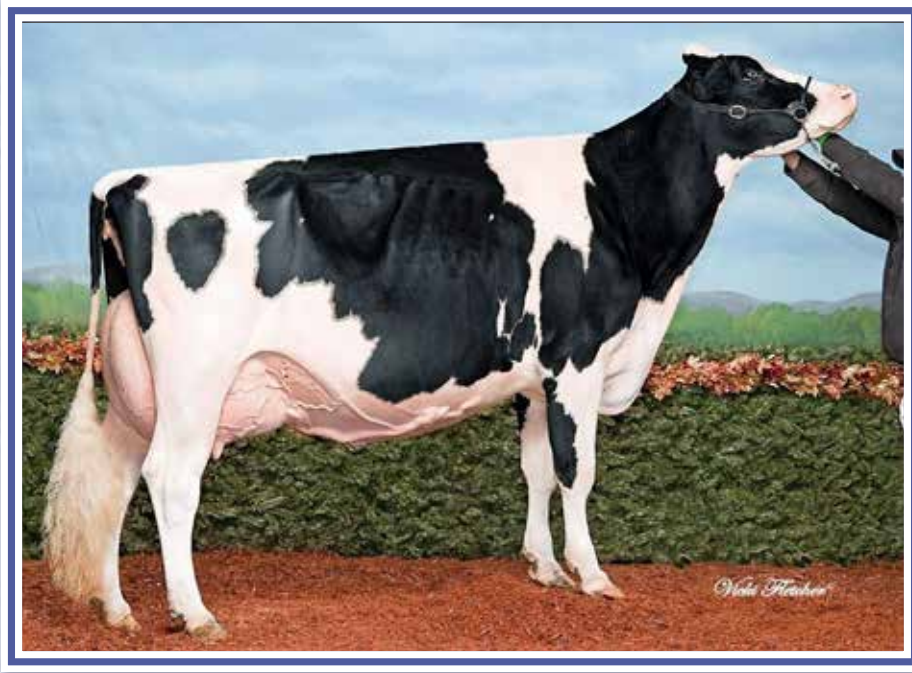
12465793 CAN B&W

CROVALLEY GOLDWYN ALEXANDRIA

10946555 CAN B&W EX-91-6E-CAN 3*
MS:90 (FA:7 RAH:8 RAW:6) F&L:91 DS:91 RP:91
2-00 2 310 9076 3.73383.1 282
2-11 2 285 8283 3.9 323 3.4 282
5-08 2 303 11555 3.6 413 3.2 371
6-11 RX 332 11402 3.6 413 3.3 377
8-02 RX 319 9775 4.0 387 3.6 350
9-04 RX 333 13689 3.9 529 3.2 441
LIFE: 9 LAC 81234 3.8 3116 3.3 2681
AVG BCA: 204-208-211 (-24M -42F -24P)
Progeny: 2 EX, 4 VG, 0 GP, 100%GP
6 Dau ME: 14291M 552F 469P (BCA: 270-283-284)

3rd - 6th Dams:

Crovalley Astonom Anne EX-90-2E-CAN 3*
4-11 2 365 14119 4.1 581 3.3 463
Crovalley Astre Amanda EX-CAN 4*
6-06 2 365 12056 4.1 490 3.2 386
LIFE: 7 LAC 76949 3.9 3037 3.2 2497
Crovalley Dynamic Ann EX-5E-CAN 6*
3-04 2 327 8012 4.1 325 3.6 286
- Res. Junior Champion, Lindsay & Peterborough '88
Crovalley Jetstar April VG-86-CAN
4-04 2 358 9664 4.1 396 3.4 327
LIFE: 7 LAC 52389 4.0 2112 3.4 1792



Richardo Dundee Dawnette EX-95-3E 4*
Grandam of Lot 41



HODGLYNN *Dazzling* SILVER

HOCANF 13742713 B&W B: 12 Sep 2020

Consigned by:

Hodglyn Holsteins
 519-395-4437
 Richard Kuntz
 519-881-0904

SEAGULL-BAY SILVER-ET

72156794 USA CDF*CVF*BYF*BLF*DPF A1/A2
 CAN-GPA DEC*20 99%REL GPA LPI 3217/98%
 KG M 1155/70% F 101/98% %F+0.49 PRO\$
 MR 99 P 57/84% %P+0.15 2593
 CAN-GPA DEC*20 99%REL CONF 8/92%
 MS 8 F&L 8 DS 2 RP 0

HODGLYNN GOLD DOTTY-ET

840 3130800006 B&W VG-87-3Y-CAN
 MS:87 (FA:7 RAH:8 RAW:8) F&L:86 DS:87 RP:89
 1-11 2 262 7431 3.5 262 3.2 238
 2-11 2 316 11689 3.8 446 3.2 374
 4-00 2 P153 11916 3.3 391 3.3 396
 LIFE: 3 LAC 25952 3.6 926 3.2 834
 AVG BCA: 232-220-234 (-14M -42F -19P)

BRAEDALE GOLDWYN

10705608 CAN
 GP-84-8Y-CAN GM'12 EXTRA'05 GLPI 2568

RICHARDO DUNDEE DAWNETTE

7614871 CAN B&W EX-95-3E-CAN 4*
 MS:95 (FA:7 RAH:8 RAW:8) F&L:95 DS:96 RP:92
 2-02 2 227 6755 4.2 282 3.2 216
 3-01 2 302 10859 3.9 425 3.2 350
 4-00 2 365 14244 4.3 613 3.2 455
 5-11 2 365 12810 3.7 479 3.3 419
 8-00 2 365 14541 4.0 575 3.2 458
 LIFE: 5 LAC 77530 4.2 3238 3.4 2667
 AVG BCA: 240-257-238 (+49M +57F +44P)
 Progeny: 2 EX, 7 VG, 0 GP 100%GP
 9 Dau ME: 12385M 511F 398P (BCA: 234-262-241)

DAWNETTE!!

HM All-Canadian 5-Year-Old 2010
 Reserve All-American 5-Year-Old 2010
 HM All-Canadian 4-Year-Old 2009
 Nom. All-American 4-Year-Old 2009
 HM All-Canadian Junior 3-Year-Old 2008
 Reserve All-American Junior 3-Year-Old 2008
 All-Ontario 2008 & 2009
 Grand Champion, Ontario Spring '12
 Grand Champion, Bruce-Grey '12
 Grand Champion, Ontario Summer '10
 HM Grand Champion, Quebec Spring '10

3rd - 6th Dams:

Richardo Gibson Dawn EX-91-2E-CAN 8*
 3-02 2 318 9354 3.1 294 3.2 296
Mclee B Star Dixie VG-87-CAN 1*
 4-02 2 365 11339 3.4 388 3.1 348
 LIFE: 7 LAC 72509 3.5 2515 3.1 2224
Mclee Tab Dorothy VG-86-CAN 3*
 5-09 2 357 10927 4.1 450 3.1 338
 LIFE: 5 LAC 47585 4.2 1975 3.2 1538
Mclee Excite Delite EX-3E-CAN
 8-00 2 365 10448 4.5 467 3.3 345
 LIFE: 6 LAC 54372 4.6 2500 3.4 1869



Quality Gibson Finsco EX-95-3E-23*
Grandam of Lot 42



Quality B C Frantisco EX-96-3E 31*
3rd Dam of Lot 42



QUALITY LUSTER *Farrak*

HOCANF 13765099 B&W B: 21 Sep 2020

Consigned by:
Quality Holsteins
905-851-3892

QUALITY LUSTER

13015835 CAN CVF*RDF*BYF*BLF*DPF*CNF A1/A2
CAN-GPA DEC*20 83%REL GPA LPI 2791/81%
KG M 414/33% F 23/32% %F+0.06 PRO\$
MR 100 P12/19% %P-0.01 1185
CAN-GPA DEC*20 81%REL CONF 11/98%
MS 11 F&L 3 DS 6 RP 6

QUALITY LAUTHORITY FARRAH

11657184 CAN B&W EX-90-3E-CAN
MS:91 (FA:7 RAH:7 RAW:8) F&L:90 DS:90 RP:87
2-07 2 330 11208 3.6 408 3.2 353
3-07 2 310 13294 3.9 516 3.0 401
4-08 2 320 14007 3.9 547 3.0 426
6-08 2 365 15894 4.0 629 3.1 484
7-11 2 P149 1449 3.6 525 3.0 441
LIFE: 5 LAC 62654 3.8 2406 3.0 1906
Progeny: 0 EX, 1 VG, 1 GP, 100%GP
1 Dau ME: 12914M 527F 410P (BCA: 244-270-248)
Maternal Sister:
Quality Goldwyn Flansco (EX-95-2E)
Canada's 1st 3rd Generation EX-95!

COMESTAR LAUTHORITY

103455217 CAN
EXTRA '10 GLPI 2501

QUALITY GIBSON FINSCO

9408176 CAN B&W EX-95-3E-CAN 23*
MS:94 (FA:7 RAH:9 RAW:9) F&L:95 DS:96 RP:97
2-03 2 323 9121 4.6 421 3.4 314
3-05 2 335 12239 6.0 736 3.2 395
4-06 2 306 10799 4.7 506 3.4 363
5-04 2 347 12261 4.9 602 3.7 448
7-06 2 315 14078 4.9 683 3.1 434
LIFE: 5 LAC 58498 5.0 2948 3.3 1954
Progeny: 12 EX, 12 VG, 5 GP, 1 G 97%GP
29 Dau ME: 12491M 517F 398P (BCA: 236-265-241)
· *HM All-Ontario 5-Year-Old 2008*
· *2nd 5-Year-Old, Ontario Spring Show '08*
· *2nd 5-Year-Old, Autumn Opportunity '08*
· *1st Junior 2-Year-Old, Halton-Peel '05*

3rd - 6th Dams:

Quality B C Frantisco EX-96-3E-CAN 31*
5-00 2 365 15841 5.1 808 3.2 513
LIFE: 5 LAC 81017 5.2 4248 3.6 2934
· *2 Superior Lactations*
· *Holstein Canada Cow of the Year 2005*
· *5X All-Canadian & 2X HM titles in milking form*
· *2X Royal Grand Champion*
Plushanski Francisco ET VG-86-CAN 7*
5-01 3 326 13515 4.7 635 3.4 462
· *2 Superior Lactations*
Plushanski Valiant Fran ET EX-90-USA DOM 35*
3-06 2 365 16747 4.1 687 3.1 516
· *7 EX & 29 VG daughters - 100%GP*
Plushanski Chief Faith EX-94-4E-USA GMD
9-01 2 305 15350 5.0 765
LIFE: 7 LAC 88792 4.5 4004



Vogue Lumineer Luster VG-89
 Dam of Lot 43



Belfast Doorman Lust VG-88 2*
 Grandam of Lot 43



ASPIRATION AXL *Lotus*

Consigned by:
 Lyndon Stewart
 519-400-0018

HOCANF 13681739 B&W B: 23 Sep 2020
A2/A2
 CAN-GPA DEC*20 79%REL GPA LPI 3082/75%
 KG M 199/42% F 47/85% %F+0.35 PRO\$
 MR 104 P 37/86% %P+0.26 1868
 CAN-GPA DEC*20 75%REL CONF 10/97%
 MS 9 F&L 10 DS 6 RP 1

PEAK AXL-ET

840 3145230125 CDF*CVF*RDF*BYF*BLF*DPF
 A2/A2
 CAN-GPA DEC*20 83%REL GPA LPI 3303/79%
 KG M 725/48% F 64/82% %F+0.32 PRO\$
 MR 103 P50/75% %P+0.22 2470
 CAN-GPA DEC*20 80%REL CONF 11/98%
 MS 12 F&L 10 DS 6 RP -2

VOGUE LUMINEER LUSTER

12187110 CAN B&W A2A2 VG-89-4Y-CAN
 MS:91 (FA:8 RAH:7 RAW:7) F&L:93 DS:92 RP:89
 1-11 2 322 10543 4.1 432 3.6 374
 2-11 RX 356 13777 4.0 545 3.6 496
 4-05 2x P167 13338 4.8 643 3.6 477
 LIFE: 3 LAC 32616 4.2 1384 3.5 1148
 AVG BCA: 267-305-297 (+35M +52F +52P)
 Progeny: 0 EX, 1 VG, 1 GP, 100%GP
 1 Dau ME: 12914M 527F 410P (BCA: 244-270-248)
 - Nom. All-Canadian 4-H Junior Calf 2016
 - Nom. All-Ontario 4-H Junior Yearling 2017
 - Nom. All-Ontario 4-H Junior Calf 2016

GENERATIONS LUMINEER

108502595 CAN
 VG-88-1Y-CAN GLPI 2865

BELFAST DOORMAN LUST

108731310 CAN B&W A2A2 VG-88-4Y-CAN 2*
 MS:89 (FA:7 RAH:7 RAW:7) F&L:88 DS:88 RP:83
 2-03 2 365 14763 4.5 657 3.4 505
 4-00 RX 365 15950 3.8 598 3.3 519
 LIFE: 2 LAC 35877 4.1 1467 3.4 1213
 AVG BCA: 302-341-314 (+75M +135F +82P)
 Progeny: 1 EX, 6 VG, 4 GP 100%GP
 9 Dau ME: 13391M 542F 459P (BCA: 253-278-278)
 - All-Ontario Junior 2-Year-Old 2016
 - Grand Champion, Brent-Wentworth '16
 - 6th Junior 2-Year-Old, Royal '16

3rd - 7th Dams:

Belfast Goldwyn Lasenza EX-95-2E-CAN 9*
 7-06 2 365 19349 4.0 766 3.3 638
 LIFE: 4 LAC 90755 4.0 3672 3.5 3189
 - All-Canadian Junior 2-Year-Old 2013
 - All-American Junior 2-Year-Old 2013
 - All-Canadian 4-H Summer Yearling 2012
 - Reserve All-Canadian Summer Yearling 2012
 - 6 All-Quebec/All-Ontario nominations/titles
 - 4X Grand Champion, Lotbiniere
Lylehaven Durham Lekysya-ET EX-92-CAN 5*
 6-06 2 365 15230 3.9 600 3.4 515
 LIFE: 3 LAC 61170 4.4 2675 3.7 2249
 - HM All-Canadian Senior 3-Year-Old 2011
 - HM All-Canadian Senior 2-Year-Old 2010
 - Reserve All-American Senior 2-Year-Old 2010
 - Nom. All-American Senior Calf 2008
 - 7 All-Quebec/All-Ontario nominations/titles
Lylehaven Leah-ET EX-91-2E-USA 2*
 6-08 2 365 21083 3.8 800 3.1 648
 LIFE: 3 LAC 66974 3.9 2587 3.3 2181
Thiersant Lili Starbuck-ET EX-94-5E-USA 6*
 5-00 2 358 13694 4.6 629 3.2 444
 LIFE: 8 LAC 108321 4.7 5120 3.4 3685
Ivyhall Astro Jet Ronie VG-86-CAN 1*
 5-04 2 305 8379 4.2 349 3.3 278
 - 1st 5-Year-Old, Sorel '93



Beckholm Goldwyn Latona EX-93

From the Same Family as Lot 44



THAMESDALE PHANTOM *Seabiscuit*

HOCANF 13594123 B&W B: 31 Oct 2020

Consigned by:

Bruce Johnson
519-659-8312
William Johnson
519-868-9457

OCD RAMBO SEABISCUIT-ET

840 3141428446 B&W *CDF*RDF*BLF*DPF A2/A2
CAN-GPA DEC*20 83%REL GPA LPI 3420/79%
KG M 583/41% F 92/97% %F +0.62 PRO\$
MR 104 P 51/76% %P +0.27 2743
CAN-GPA DEC*20 79%REL CONF 12/99%
MS 8 F&L 9 DS 7 RP 7

KILLCROFT BRADNICK LUNE

12345635 CAN B&W GP-80-2Y-CAN
MS:82 (FA:8 RAH:8 RAW:2) F&L:79 DS:76 RP:84
1-11 2 342 6342 3.9 247 3.3 211
2-11 2 365 7744 4.4 338 3.4 262
4-04 2 P114 7965 4.3 346 3.2 252
AVG BCA: 154-171-157 (-2M +7F +4P)

REGANCREST-GV S BRADNICK-ET

66625940 USA B&W A2/A2
VG-87-2YR-USA ST*14 GLPI 2295

KILLCROFT LAUTHORITY LA LUNE

11191728 CAN B&W VG-85-3Y-CAN
MS:87 (FA:7 RAH:8 RAW:6) F&L:85 DS:85 RP:77
1-11 2 359 7920 4.2 336 3.2 256
3-02 2 365 10317 4.4 454 3.2 334
4-08 2 351 10327 4.1 418 3.4 355
LIFE: 3 LAC 30763 4.3 1318 3.3 1030
AVG BCA: 242-268-261 (+4M +7F +16P)
Progeny: 0 EX, 0 VG, 1 GP 100%GP
1 Dau ME: 8151M 333F 259P (BCA: 154-171-157)

Beckholm Goldwyn Latona (EX-93-USA)

Nom. Junior All-American Aged Cow 2020
Grand Champion, Iowa State Junior Show '19
Nom. Junior All-American 4-Year-Old 2018
Goldwyn x VG-88 Denison x VG-86 Stormatic x
EX-4E 11* x Leadman Liza VG-89 16*

3rd - 8th Dams:

Killicroft Outside Lundi EX-91-5E-CAN

8-10 2 365 14776 3.4 502 3.1 453
LIFE: 8 LAC 112100 3.6 4057 3.1 3466

Killicroft Storm Luna VG-85-CAN

5-04 2 365 13876 3.6 499 3.1 435
LIFE: 4 LAC 54879 3.7 2016 3.2 1765

Killicroft Leadman Liza VG-89 16*

7-05 2 365 15736 3.5 555 3.0 475
LIFE: 5 LAC 105210 3.9 4088 3.3 3517

Tikvah Mark Lizzie VG-86 6*

5-08 2 365 18128 3.3 613 2.8 512
LIFE: 6 LAC 90367 3.6 3209 3.1 2789

· 2 Superior Lactations

Shady-Grove Chief Vickie EX-91-2E GMD DOM

LIFE: 6 LAC 57916 3.8 2180

Shady Grove Astro Vicki EX-90-2E DOM

LIFE: 6 LAC 48657 3.8 1829



Cherrie-Kreek Beulah-Red-ET EX-92 4*
4th Dam of Lot 45

Pamprd-Acres Ab Ivy-Red EX-94
From the Same Family as Lot 45
Nom. All-American R&W 4-Year-Old 2018



ARMCREST OVERWING *Beatrice*

HOCANF 12860665 B&W B: 01 Dec 2020

Consigned by:
Brian Armstrong
705-932-5462

SIEMERS OVERWING-ET

840 3134506795 *RDC*CVF*BYF*BLF*DPF*CNF
A2A2
CAN-GPA DEC*20 93%REL GPA LPI 2737/87%
KG M 194/24% F 48/64% %F +0.39 PRO\$
MR 100 P 11/17% %P +0.05 1200
CAN-GPA DEC*20 89%REL CONF 10/96%
MS 7 F&L 9 DS 7 RP 5

BERWEN SAGARD CAMILLE
12821965 CAN B&W *RDC

PARKHURST SAGARD

109127990 CAN B&W *RDC
GP-83-2Y-CAN GLPI 3013

BREEZE HILL DEFIANT CAMERO RED

11707654 CAN R&W VG-86-2Y-CAN
MS:86 (FA:8 RAH:7 RAW:7) F&L:85 DS:87 RP:87
2-01 2 365 12576 4.2 529 3.3 411
3-08 2 365 14844 3.5 520 3.2 470
AVG BCA: 270-274-266 (+0M +26F +0P)
Progeny: 0 EX, 0 VG, 1 GP 100%GP

3rd - 11th Dams:

Greenlea-Tim Real Bea-Red-ET VG-87-CAN 4*
7-11 2 365 17238 3.8 660 3.2 549
LIFE: 6 LAC 91146 3.9 3593 3.2 2934
Cherrie-Kreek Beulah-Red-ET EX-92-USA 4*
4-02 2 365 17631 3.5 618 3.4 596
· Reserve All-American R&W 4-Year-Old 2008
· Nom. All-American R&W Junior 2-Year-Old 2006
· Grand Champion, WDE R&W '08
Pinehurst-FL Britney-ET EX-90-USA EX-MS
4-11 2 365 13660 4.2 571 3.4 462
Pinehurst Burgandy-Red-ET EX-90-USA EX-MS
4-11 2 365 13661 4.2 571 3.4 462
· HM All-American R&W Senior Calf 1995
· Nom. All-American R&W 3-Year-Old 1998
Pinehurst Beaujolais-Red EX-94-3E USA
7-06 3 365 23011 3.5 807 2.8 645
LIFE: 4 LAC 100432 3.3 3310 3.0 3006
· All-American R&W 1991 & 1994
· 6X Winner at International R&W Show
· Grand Champion, Int'l R&W Show 1994
Pinehurst Fascination EX-90-USA
Pinehurst Pleasure EX-93-4E GMD
Pinehurst Precious EX-95-4E GMD
· All-American 5-Year-Old 1982
Res. All-American 1979, 1980 & 1981
Jan-Com Fond Matt Matilda EX-97-5E GMD
· Junior All-American Aged Cow 1977



Knonaudale Jasmine EX-96-4E 7*
3rd Dam of Lot 46



Kingsway Windbrook Jazz EX-95-2E
Maternal Sister to Grandam of Lot 46



RANHAVEN *Jazzy*

HOCANF 11254545 B&W B: 02 Dec 2020

Consigned by:
Craig Ranter
519-424-9656

BLONDIN THUNDER STORM

110296922 CAN B&W *CDF*CVF*BYF*BLF*DPF
CAN-GPA DEC*20 83%REL GPA LPI 2719/80%
KG M 242/26% F -13/5% %F-0.21 PRO\$
MR 104 P 0/8% %P-0.06 610
CAN-GPA DEC*20 80%REL CONF 17/99%
MS 11 F&L 14 DS 12 RP 15

KINGSWAY SOLOMON JANGLE
13279682 CAN B&W

WALNUTLAWN SOLOMON
11775998 CAN A2/A2
GLPI 2695 CONF 12

KINGSWAY EQUATION JESSABELL
12392419 CAN B&W VG-88-3Y-CAN
MS:87 (FA:7 RAH:7 RAW:6) F&L:88 DS:91 RP:88
1-11 2 274 6888 5.4 374 3.8 258
3-02 2 320 10430 5.9 615 3.8 391
LIFE: 2 LAC 1718 5.7 989 3.7 649
AVG BCA: 194-297-227 (-37M +22F -10P)

JASMINE!!

Holstein Canada Cow of the Year Nominee 2019
Reserve All-Canadian Production Cow 2017
All-Ontario Production Cow 2017
HM All-Ontario Mature Cow 2015
Grand Champion, Autumn Opportunity '17
Grand Champion, Northumberland '17
Grand Champion, Stormont '14
Reserve Grand Champion, Northumberland '13
Reserve Grand Champion, Quinte Ex. '13
1st Longtime Production, Ontario Summer '17
1st 5-Year-Old, Eastern ON Champ & Stormont '14

3rd - 8th Dams:

Knonaudale Jasmine EX-96-4E-CAN 7*
8-02 2 365 15242 4.9 746 3.4 519
LIFE: 6 LAC 77382 4.5 3518 3.5 2747
Knonaudale Elsy EX-92-2E 7*
3-09 2 365 15581 33 507 3.2 504
Knonaudale Anna VG-88-CAN EX-MS 4*
7-00 2 365 14000 4.3 603 3. 4478
LIFE: 5 LAC 72604 4.3 3126 3.6 2605
Knonaudale Toodie GP-83-2YR-CAN VG-MS 4*
3-09 2 339 13295 3.8 501 3.4 451
LIFE: 8 LAC 88229 3.7 3273 3.3 2944
Knonaudale Perpetua VG-87-CAN 6*
6-02 2 365 14551 3.9 564 3.3 474
LIFE: 5 LAC 61915 3.8 2378 3.4 2101
Knonaudale Liz VG-88-CAN 5*
5-02 2 365 11735 4.2 497 3.3 391
LIFE: 6 LAC 57572 4.3 2478 3.5 1994



Knonaudale Lite My Fire VG-87-2Y

Full Sister to Lot 47



Knonaudale Lululemon VG-88-2Y

Full Sister to Lot 47



KNONAUDALE *Lite The Way*

HOCANF 13943439 R&W B: 10 Dec 2020

Consigned by:

Knonaudale Farms Inc.
613-987-5474

CYCLE MCGUCCI JORDY-RED

840 3131666411 R&W *CDF*CVC*BYF*BLF*DPF
CAN-GPA DEC*20 92%REL GPA LPI 2680/86%
KG M -655/4% F 6/15% %F +0.28 PRO\$
MR 100 P -29/0% %P -0.07 590
CAN-GPA DEC*20 88%REL CONF 17/99%
MS 13 F&L 19 DS 8 RP 8

KNONAUDALE LOVING LIFE

12155323 CAN R&W VG-85-2Y-CAN
MS:86 (FA:7 RAH:7 RAW:8) F&L:80 DS:85 RP:85
2-00 2 365 10565 5.0 524 3.6 377
AVG BCA: 236-311-256 (+2M +40F +18P)
Progeny: 0 EX, 3 VG, 2 GP 100%GP
5 Dau ME: 11909M 495F 398P (BCA: 225-254-241)

MR APPLES ARMANI-ET

68571374 USA B&W *RDC*CDC
EX-90-4YR-USA ST'16 GLPI 2725

LINDENRIGHT SHAQUILLE LAVA

11179062 CAN R&W EX-90-4Y-CAN
MS:93 (FA:7 RAH:8 RAW:7) F&L:90 DS:89 RP:88
1-11 2 271 7381 4.7 348 3.3 241
2-10 2 365 12788 4.3 546 3.5 442
4-01 2 365 16724 3.9 656 34 574
5-07 2 365 14818 4.0 593 3.7 541
6-11 2 359 13512 4.3 578 3.4 458
8-01 2 365 15834 4.0 634 3.5 551
LIFE: 6 LAC 90787 4.2 3827 3.6 3223
AVG BCA: 242-268-261 (+4M +7F +16P)
Progeny: 0 EX, 3 VG, 1 GP 100%GP
3 Dau ME: 11432M 525F 408P (BCA: 216-269-247)
· 1 Superior Lactation

FULL SISTERS TO LITE THE WAY:

Knonaudale Lululemon (VG-88-2Y)
Res. All-Canadian R&W Yearling Heifer 2019
1st Winter Yearling, Royal R&W '19
Knonaudale Lite My Fire (VG-87-2Y)
Una. All-American R&W Winter Yearling 2019
Reserve Junior Champion, WDE R&W '19
Junior Champion, All-American R&W '18

3rd - 9th Dams:

Lindenright Burns Loyalty VG-87-CAN VG-MS
3-00 2 365 13674 3.9 533 3.6 91
LIFE: 5 LAC 57225 3.9 2239 3.5 2031
Lindenright Talent Licorice VG-85-CAN VG-MS
3-03 2 365 15165 3.8 581 3.5 530
LIFE: 4 LAC 46968 4.1 1929 3.5 1656
· 1 Superior Lactation
Lindenright Rudolph El Lauraly VG-87 7*
3-05 2 365 13532 3.6 481 3.5 471
LIFE: 4 LAC 47903 3.5 1680 34 1626
Dream&Do Eagle Liberty VG-85 13*
6-07 2 365 16647 3.6 592 3.4 562
LIFE: 5 LAC 63105 3.5 2228 3.5 2178
· 2 Superior Lactations
Dream&Do Beccas Image-ET EX-94-3E DOM
LIFE: 8 LAC 91260 3.7 3340 3.3 2974
Ray-Collins Bmaker Girl Willow EX-94-5E GMD DOM
LIFE: 11 LAC 123820 3.9 4855 3.2 3962
Ray-Collins Bootmaker Girl VG-87 GMD DOM
LIFE: 5 LAC 52037 3.7 1900



Savage-Leigh Gold Lona-ET EX-92
Grandam of Lot 48



Savage-Leigh Licorice-ET EX-92 3*
3rd Dam of Lot 48



HC14843631 KINGBOY

Lala Land

HOCANF 13924057 B&W B: 11 Dec 2020

Consigned by:

Valiant Dairy Genetics
519-532-1776

MORNINGVIEW MCC KINGBOY-ET

72044077 USA *CDF*CVF*RDF*BYF*BLF*DPF
A2/A2 EX-92-4Y-USA ST '17
CAN-GPA DEC*20 99%REL GPA LPI 2959/98%
KG M 1356/77% F 32/42% %F-0.16 PRO\$
MR 102 P 41/61% %P-0.03 1633
CAN-GPA DEC*20 99%REL CONF 9/95%
MS 9 F&L 4 DS 6 RP 3

SAVAGE-LEIGH ALEX LACEY-ET

840 3007810549 B&W VG-87 VVVV USA 3-01
3-05 2 305 11975 4.4 531 3.4 403
· All-American Winter Yearling 2014
· All-Maryland Winter Yearling 2014
· 1st & HM Junior Champion, WDE '14
· Supreme Junior Champion, Maryland State Fair '14
· 2nd Winter Calf, Eastern National '13

GOLDEN-OAKS ST ALEXANDER-ET

61133837 CAN A2A2
EX-94-8Y-USA ST'12 GLPI 2241

SAVAGE-LEIGH GOLD LONA-ET

840 3004778739 B&W EX-92-3Y-USA
2-05 2 354 14901 4.1 614 3.3 498
3-06 2 365 15554 3.8 591 3.1 438
5-03 2 305 14742 3.9 577 3.2 473
· Reserve Junior All-American 4-Year-Old 2013
· Reserve Senior Champion, Eastern National '13
· Supreme Champion, Premier Nat'l Jr Show '12

Full Sister:

SAVAGE-LEIGH GOLD LEONA-ET (EX-96 GMD DOM)

· Reserve All-American Production Cow 2012
· Nom. All-American Production Cow 2013 & 2014
· Nom. All-American & All-Canadian 5-Year-Old 2010
· HHM All-American Junior 2-Year-Old 2007

3rd - 9th Dams:

Savage-Leigh Licorice-ET EX-92 GMD DOM 3*
4-02 2 365 23233 4.3 988 3.3 768
· HM All-American 5-Year-Old 2006
· Dam of Nom. All-American Produce of Dam 2007
· Grand Champion, NY Spring Int'l '16
· Res. Grand Champion, NY Spring Int'l '15
Savage-Leigh Bellwood Linda EX-92 2E GMD 1*
2-10 2 365 18253 5.8 1065 3.6 650
· Nom. Global Cow of the Year 2005 & 2006
· Nom. All-American Junior 3-Year-Old 1999
Savage-Leigh Star Linda-ET VG-87 EX-MS GMD
2-02 2 365 14012 4.0 561 3.3 459
Savage-Leigh Glenview Linda EX-90 GMD
6-08 2 365 18969 4.6 878 3.0 566
LIFE: 5 LAC 68176 4.4 3011 3.2 2182
Savage-Leigh Lindas Chairman GP-84
5-10 2 365 13889 3.8 529 3.3 459
LIFE: 5 LAC 55135 3.9 2140 3.3 1820
Savage-Leigh Creek Lydia VG-88
Savage-Leigh Kate Linda VG-85



Brandt-View Doc Miami-ET
Dam of Lot 49

Cookview Goldwyn Monique EX-96-3E 2*
3rd Dam of Lot 49
Sold for \$490,000 in International Intrigue Sale



SPERO VALIANT TRPC

Miami Heat

Consigned by:
Valiant Dairy Genetics
519-532-1776
Spero Holsteins Ltd.
519-475-6253

HOCANF 13995399 B&W B: 29 Dec 2020
CAN-GPA DEC*20 78%REL GLPI 2989/74%
KG M 1083/84% F 50/87% %F+0.06 PRO\$
MR 99 P 46/93% %P+0.08 1656
CAN-GPA DEC*20 74%REL CONF 11/98%
MS 12 F&L 6 DS 9 RP 0

GTPI +2475 PTAT +2.96 +995M

PEAK TROPIC-ET

840 3145229820 B&W *CDF*CVF*RDF*BYF*BLF*DPF
CAN-GPA DEC*20 78%REL GLPI 3422/78%
KG M 1212/72% F 110/99% %F+0.55 PRO\$
MR 103 P 76/96% %P+0.29 3088
CAN-GPA DEC*20 79%REL CONF 10/96%
MS 8 F&L 9 DS 5 RP 0

BRANDT-VIEW DOC MIAMI-ET

840 3141609273 B&W *CDF*RDF*BLF*DPF
CAN-GPA DEC*20 82%REL GLPI 2799/78%
KG M 124/38% F 13/45% %F+0.08 PRO\$
MR 100 P 14/51% %P+0.09 936
CAN-GPA DEC*20 79%REL CONF 12/99%
MS 12 F&L 6 DS 10 RP 4

- Due in July and looks promising!

WOODCREST KING DOC

840 3132417775 A2A2
VG-88-1Y-USA GLPI 3126

MS DOORMAN MITZY-ET

73629582 USA B&W VG-88 VV+VE 2-04
CONF 10 / PTAT +2.12
1-11 3 311 11304 3.9 436 3.2 395

3rd - 7th Dams:

Cookview Goldwyn Monique EX-96-3E-USA 2*
6-03 2 305 33740 4.5 1514 3.2 1072
LIFE: 4 LAC 167676 4.9 8140 3.4 5638
- Nom. All-American Aged Cow 2015
- All-American 4-Year-Old 2013
- Reserve All-Canadian 4-Year-Old 2013
- All-American & All-Canadian Sr 3-Year-Old 2012
- Reserve Grand Champion, WDE & Royal '13
- Intermediate Champion, WDE & Royal '12
- Sold for \$490,000 in International Intrigue Sale
Cookview Igniter Monika GP-81-2Y-CAN
2-03 2 266 8146 3.7 305 3.1 252
Cookview Progress Melanie GP-81-3Y-CAN
3-11 2 365 13240 3.2 424 3.1 412
Starhaven Bailor Mavis VG-85-4YR-CAN
5-05 2 356 11686 3.5 412 3.3 389
Starhaven Clover May VG-85-3YR-CAN
6-10 2 312 10254 3.8 392 3.2 325
LIFE: 7 LAC 68218 3.7 2558 3.2 2182



KARNVIEW SIDEKICK *Dejavu*

HOCANF 13716030 B&W B: 02 Mar 2020

Consigned by:
Karnview Farms Inc.
519-536-1125

WALNUTLAWN SIDEKICK

12508113 CAN *CDF*CVF*RDF*BYF*BLF*DPF*CNF
A2/A2 VG-85-2YR-CAN
CAN-GPA DEC*20 92%REL GPA LPI 3265/86%
KG M -451/7% F 46/61% %F+0.57 PRO\$
MR 106 P14/21% %P+0.24 1844
CAN-GPA DEC*20 88%REL CONF 19/99%
MS 16 F&L 12 DS 14 RP 8

CHRISHAR ACROBAT DONNA

12866475 CAN B&W VG-86-2Y-CAN
MS:86 (FA:7 RAH:7 RAW:8) F&L:86 DS:85 RP:88
1-11 2 305 9914 4.2 414 3.4 335
AVG BCA: 242-272-255 (-6M +4F +1P)

MYSTIQUE ACROBAT

107993373 CAN
VG-86-1Y-CAN ST'17 GLPI 2768

CHRISHAR LHEROS DREW

11304786 CAN B&W EX-90-5Y-CAN
MS:90 (FA:8 RAH:8 RAW:6) F&L:89 DS:90 RP:93
2-05 2 298 8430 3.8 317 3.4 288
4-01 2 313 10010 3.8 382 3.3 331
5-02 2 272 9618 3.4 325 3.1 298
LIFE: 3 LAC 28058 3.6 1024 3.3 917
AVG BCA: 192-190-199 (-42M -49F -32P)
Progeny: 0 EX, 1 VG, 0 GP 100%GP
1 Dau ME: 12809M 530F 421P (242-272-255)

3rd - 4th Dams:

Chrisar Sept Drexel

Chrisar Integrity Dixie GP-83-2Y-CAN

7-06 2 329 12089 4.2 502 2.9 355
LIFE: 8 LAC 83697 4.1 3421 3.0 2500



WALNUTLAWN DISCJOCKEY *Brynn*

HOCANF 13747345 B&W B: 04 Jun 2020

Consigned by:
Walnutlawn Farms Ltd.
519-801-8506

CLAYNOOK DISCJOCKEY

840 3141428446 B&W *CDF*CDF*CVF*RDF*
BYF*BLF*DPF*CNF
CAN-GPA DEC*20 81%REL GPA LPI 3381/77%
KG M 1111/67% F 79/91% %F+0.32 PRO\$
MR 108 P 63/90% %P+0.21 2761
CAN-GPA DEC*20 78%REL CONF 10/96%
MS 14 F&L 3 DS 1 RP -2

WALNUTLAWN JACOBY BRYNNA

12508160 CAN B&W VG-86-2Y-CAN
MS:88 (FA:9 RAH:8 RAW:8) F&L:80 DS:86 RP:89
1-11 2 295 9074 4.1 368 3.4 309
AVG BCA: 243-265-259 (+9M +11F +17P)

CYCLE DOORMAN JACOBY-ET

8403013614066 B&W A2/A2
EX-90-3YR-USA GLPI 2646 CONF 14

WALNUTLAWN KNOWLEDGE BARBETTE

11120372 CAN B&W EX-91-3E-CAN
MS:91 (FA:8 RAH:7 RAW:7) F&L:91 DS:91 RP:93
2-05 2 321 9206 4.7 437 3.5 324
3-04 2 343 10498 4.6 488 3.7 387
4-07 2 345 11950 4.4 526 3.6 432
5-08 2 339 12818 4.8 614 3.6 464
6-10 2 365 12355 4.4 549 3.5 429
LIFE: 5 LAC 57166 4.6 2629 3.6 2049
AVG BCA: 216-267-243 (-26M +2F -5P)
Progeny: 0 EX, 2 VG, 0 GP 100%GP
2 Dau ME: 11009M 466F 375P (BCA: 208-239-227)

3rd - 7th Dams:

Walnutlawn Gibson Ballerina VG-87-CAN

5-08 2 361 11298 4.8 545 3.7 419
LIFE: 8 LAC 77761 4.7 3647 3.6 2797

Walnutlawn Raider Nina EX-2E-CAN

6-06 2 365 13631 5.3 721 3.8 512
LIFE: 5 LAC 60408 5.2 3165 3.8 2283

Walnutlawn Prelude Nicole GP-80-2Y-CAN

Walnutlawn Jethro Nicky VG-87-CAN
3-09 2 365 11069 3.9 433 3.4 378
LIFE: 5 LAC 40746 4.0 1629 3.4 1405

Walnutlawn Jewel Nan VG-85-CAN 1*

9-10 2 365 11931 4.0 480 3.3 396
LIFE: 7 LAC 75307 4.1 3052 3.4 2582



DUTCHOLM SIDEKICK *Murtle*

HOCANF 13791645 B&W B: 17 Jul 2020

Consigned by:
Milky Hills Farm Inc.
519-846-5430

WALNUTLAWN SIDEKICK

12508113 CAN *CDF*CVF*RDF*BYF*BLF*DPF*CNF
A2/A2 VG-85-2YR-CAN
CAN-GPA DEC*20 92%REL GPA LPI 3265/86%
KG M -451/7% F 46/61% %F+0.57 PRO\$
MR 106 P14/21% %P+0.24 1844
CAN-GPA DEC*20 88%REL CONF 19/99%
MS 16 F&L 12 DS 14 RP 8

STROEELE CONTROL MURTAGH

13086821 CAN B&W

JK EDER-I CONTROL

11278908 CAN
VG-88-5Y-CAN ST'16 GLPI 2858

STROEELE LAVANGUARD MURDOCK

11399434 CAN B&W EX-91-4Y-CAN
MS:92 (FA:7 RAH:7 RAW:8) F&L:91 DS:90 RP:90

3rd - 4th Dams:

Stroelee G Micky VG-85-CAN

Stroelee Blitz Moby EX-92-3E-CAN

5-04 2 318 14697 3.0 448 2.7 400
LIFE: 6 LAC 75500 3.2 2427 2.8 2124



VAN1469 SIDEKICK *Weston*

HOCANF 13662901 B&W B: 14 Sep 2020

Consigned by:
Nathan Vandekemp
613-649-2995

WALNUTLAWN SIDEKICK

12508113 CAN *CDF*CVF*RDF*BYF*BLF*DPF*CNF
A2/A2 VG-85-2YR-CAN
CAN-GPA DEC*20 92%REL GPA LPI 3265/86%
KG M -451/7% F 46/61% %F+0.57 PRO\$
MR 106 P14/21% %P+0.24 1844
CAN-GPA DEC*20 88%REL CONF 19/99%
MS 16 F&L 12 DS 14 RP 8

VAN1469 SHERIFF WENDY

13101211 CAN B&W VG-85-2Y-CAN
MS:84 (FA:8 RAH:8 RAW:6) F&L:85 DS:85 RP:87
2-02 2 P156 8232 3.6 292 2.9 238
AVG BCA: 204-193-184

PELLERAT SHERIFF

109024521 CAN
GLPI 2987

PRODUCER FEVER WILMA

12456230 CAN B&W GP-83-2Y-CAN
MS:81 (FA:6 RAH:6 RAW:5) F&L:85 DS:85 RP:87
1-09 2 353 7660 4.1 311 3.2 244
2-09 2 365 9821 4.0 392 3.2 312
AVG BCA: 195-208-191 (+39M +46F +35P)
Progeny: 0 EX, 1 VG, 0 GP 100%GP
1 Dau ME: 10797M 376F 304P (204-193-184)

3rd - 7th Dams:

Producer Burnside Winter VG-85-CAN

4-01 2 336 10558 3.7 387 3.3 346

Producer S Storm Winnie GP-83-2Y-CAN

3-02 2 321 10701 3.9 412 3.0 323

Producer Redman Woozy VG-85-CAN

7-01 2 309 10374 3.8 392 3.4 350

LIFE: 7 LAC 60477 3.9 2332 3.3 1991

Producer Jed Wonder VG-85-CAN 1*

6-02 2 307 10237 3.5 361 3.4 343

Producer Broker Joyce VG-87-CAN

5-07 2 325 8808 3.9 343 3.4 301



NEW GALMA DEMPSEY *Leanora*

HOCANF 13679509 B&W B: 28 Sep 2020

Consigned by:
New Galma Dairy
519-485-5681

LIRR DREW DEMPSEY

61083609 USA *CDC*CVF*RDF*BYF*BLF*DPF
EX-93-11Y-USA EXTRA*11
CAN-GPA DEC*20 99%REL GPA LPI 2789/99%
KG M -459/7% F 10/19% %F+0.24 PRO\$
MR 107 P 10/16% %P+0.22 1005
CAN-GPA DEC*20 99%REL CONF 12/99%
MS 8 F&L 11 DS 9 RP 7

NEW GALMA DOORMAN 1251

12737692 CAN B&W GP-84-2Y-CAN
MS:86 (FA:8 RAH:7 RAW:6) F&L:84 DS:81 RP:85
1-11 RX 272 6928 4.2 288 3.5 240
2-09 RX P127 12389 3.9 478 3.8 472
AVG BCA: 229-243-262 (-49M -39F -47P)

VAL-BISSON DOORMAN

107281711 CAN B&WA2A2
EX-90-5Y-CAN ST*16 GLPI 2948

NEW GALMA DAY LEANORA

11867336 CAN B&W VG-86-3Y-CAN
MS:87 (FA:8 RAH:9 RAW:5) F&L:87 DS:85 RP:88
2-00 RX 327 10667 4.1 438 3.3 348
4-01 RX 365 14033 4.4 616 3.7 516
AVG BCA: 244-271-262 (+7M +24F +19P)
Progeny: 0 EX, 1 VG, 1 GP 100%GP
2 Dau ME: 12068M 499F 435P (228-256-263)

3rd - 9th Dams:

New Galma Goldwyn Leanora EX-90-2E-CAN 1*
5-01 RX 365 16614 3.2 537 3.0 499
LIFE: 4 LAC 71970 3.5 2545 3.2 2276
Bridgewood Blitz Leila EX-90-3E-CAN 4*
3-06 2 365 16179 2.9 475 2.8 454
LIFE: 5 LAC 78401 3.3 2574 2.9 2236
- 1 Superior Lactation
Bridgewood Duplicate Leila EX-CAN 3*
5-05 2 308 10376 4.3 442 3.4 351
Bridgewood Chief Leila EX-CAN 5*
8-10 2 365 15305 4.5 687 3.5 539
LIFE: 6 LAC 72356 4.7 348 3.6 2582
- 3 Superior Lactations
Campbelldale Leila EX-CAN 6*
5-03 2 3665 11948 4.4 525 3.6 432
LIFE: 6 LAC 65980 4.3 2849 3.5 2292



MAPLEBROUGH SIDEKICK *Leanna*

HOCANF 13974327 B&W B: 09 Dec 20

Consigned by:
Maplebrough Holsteins
905-852-9177

WALNUTLAWN SIDEKICK

12508113 CAN *CDF*CVF*RDF*BYF*BLF*DPF*CNF
A2/A2 VG-85-2YR-CAN
CAN-GPA DEC*20 92%REL GPA LPI 3265/86%
KG M -451/7% F 46/61% %F+0.57 PRO\$
MR 106 P14/21% %P+0.24 1844
CAN-GPA DEC*20 88%REL CONF 19/99%
MS 16 F&L 12 DS 14 RP 8

MAPLEBROUGH UNIX LEONA

12822633 CAN B&W GP-83-2Y-CAN
MS:84 (FA:5 RAH:6 RAW:7) F&L:85 DS:82 RP:81
1-10 2 P80 11940 3.6 429 3.0 356
AVG BCA: 305-298-285

CROTEAU LESPERRON UNIX

107567492 CAN
EX-96-7YR-CAN ST*17 GLPI 2943

MAPLEBROUGH DOORMAN LENA

12117652 CAN B&W VG-86-2Y-CAN
MS:86 (FA:6 RAH:7 RAW:8) F&L:86 DS:86 RP:86
2-01 2 365 15899 3.7 582 3.2 510
3-06 2 311 143461 3.8 516 3.3 441
AVG BCA: 307-308-308 (+13M +2F +12P)
Progeny: 0 EX, 0 VG, 1 GP, 100%GP
1 Dau ME: 16143M 581F 471P (BCA: 305-298-285)
- 1 Superior Lactation

3rd - 8th Dams:

Maplebrough Fever Rosaleena EX-90-3E-CAN 1*
5-10 2 336 14978 3.9 582 3.3 489
LIFE: 7 LAC 86473 3.7 3223 3.2 2745
Maplebrough Outside Rosalie EX-90-3E-CAN
4-09 2 353 13717 4.2 570 3.2 443
LIFE: 6 LAC 61313 4.1 2517 3.1 1906
Maplebrough Inquirer Rosa EX-90-4E-CAN 3*
5-10 2 299 11932 3.2 378 3.2 383
LIFE: 7 LAC 64552 3.1 1989 3.3 2143
Maplebrough Aeroline Rosie GP-82-2Y-CAN
3-04 2 365 9313 3.7 347 3.4 317
Maplebrough Astre Rosa VG-88-CAN
4-02 2 365 11573 3.4 393 3.1 362
LIFE: 6 LAC 67228 3.4 2269 3.1 2077
Maplebrough Privilege Rose EX-2E-CAN
6-11 2 355 10702 3.5 376 2.9 315
LIFE: 8 LAC 66194 3.8 2517 3.1 2032



Westcoast Crown Asparagus P VG-87
 Dam of Lot 56



KHW Regiment Apple-Red EX-96-4E 34*
 3rd Dam of Lot 56



ALTITUDE EMBRYOS x *Asparagus P*

5 #1 Sexed Embryos

Consigned by:

Kingsway Farms
 705-778-3389
 Riverdown Holsteins
 613-821-3421

FARNEAR ALTITUDE-RED-ET

840 3128013348 R&W *CDF*CVF*BYF*BLF*DPF
 A1A2
 CAN-GPA DEC*20 81%REL GPA LPI 2930/77%
 KG M 6/17% F 29/39% %F+0.28 PRO\$
 MR 101 P 20/28% %P+0.18 1371
 CAN-GPA DEC*20 78%REL CONF 14/99%
 MS 13 F&L 8 DS 8 RP 4

WESTCOAST CROWN ASPARAGUS P

12503037 CAN R&W *POR VG-87-3Y-CAN
 MS:89 (FA:9 RAH:9 RAW:8) F&L:82 DS:90 RP:89
 1-11 3 323 8646 4.5 392 3.4 296
 3-04 RX 329 11923 4.7 556 3.5 416
 AVG BCA: 232-287-248 (+7M +18F +13P)
 Progeny: 0 EX, 1 VG, 0 GP 100%GP
 1 Dau ME: 13497M 579F 456P (BCA: 255-297-276)
 · 2nd Senior 3-Year-Old, Peterborough '19
 · 9th Senior 2-Year-Old, BC Spring '18

SANDY-VALLEY CROWN P-RED-ET

71181706 CAN
 GLPI 2573

MS APPLES ASSET-RED-ET

139330265 USA R&W EX-92-6Y-CAN 3*
 MS:91 (FA:7 RAH:9 RAW:5) F&L:93 DS:94 RP:90
 2-05 3 365 14021 3.7 513 3.3 461
 5-01 2 365 16886 4.2 701 3.3 564
 6-04 2 296 9142 4.6 425 4.1 379
 LIFE: 3 LAC 47675 4.1 1953 3.6 1704
 AVG BCA: 253-282-278 (-18M +27F +11P)
 Progeny: 1 EX, 8 VG, 3 GP, 100%GP
 14 Dau ME: 12597M 493F 416P (BCA: 238-253-252)
 · HM All-American R&W 5-Year-Old 2013
 · 3rd 5-Year-Old, WDE R&W '13

APPLE!!

Res. All-American R&W 125,000 Lb Cow 2014
 2013 HI Red Impact Cow of the Year
 Unanimous All-American R&W 125,000lb 2013
 Grand Champion, Grand Int'l R&W Show 2011
 All-American R&W Aged Cow 2011
 HI World Champion R&W Cow 2010
 Res. All-Canadian Senior Cow 2009
 Res. Grand Champion, Royal R&W 2009
 HHM All-American R&W Junior 3-Year-Old 2007
 Unanimous All-American Junior 2-Year-Old 2006
 All-American R&W Junior 2-Year-Old 2006

3rd - 9th Dams:

KHW Regiment Apple-Red-ET EX-96-4E DOM 34*
 9-01 2 365 16670 4.3 718 3.5 581
 LIFE: 6 LAC 109153 4.7 5169 3.7 4060
 · 46 classified daughters in Canada - 100%GP
Kamps-Hollow Altitude-ET EX-95-2E DOM 2*
 7-00 2 365 18003 4.7 839 3.5 628
 LIFE: 3 LAC 65525 4.3 2855 3.7 2399
 · Red Impact Cow of the Year 2009
Clover-Mist Alisa EX-93-3E-USA GMD DOM
 LIFE: 6 LAC 102726 4.7 4835 3.6 3696
Clover-Mist Augy Star EX-94-4E-USA DOM
 LIFE: 6 LAC 90847 4.8 4324 3.4 3086
D-R-A August EX-96-4E-USA DOM
 LIFE: 8 LAC 86274 4.4 3757 2.3 2021
D-R-A Ideal Precious Leader EX-90-2E-USA
 7-06 2 358 9113 3.9 357 3.4 306
D-R-A Princess Lad Leader EX-90-3E-USA
 9-05 2 305 8691 4.2 367



Bosdale Gold Luster EX-94 4*

From the Same Family as Lot 57

All-Canadian Junior 2-Year-Old 2014 / Reserve All-Canadian 4-Year-Old 2016



Lexis Allen Luella EX-92-5E

Maternal Sister to Grandam of Lot 57



DOORMAN EMBRYOS x

Lizzy

2 #1 Embryos

Consigned by:

Glenbert Holsteins
519-535-4230

VAL-BISSON DOORMAN

107281711 CAN B&W *POF*CDF*CVF*RDF A2A2
EX-90-5YR-CAN ST'16
CAN-GPA DEC*20 99%REL GPA LPI 2948/99%
KG M-122/14% F31/41% %F+0.32 PRO\$
MR 106 P29/42% %P+0.28 1400
CAN-GPA DEC*20 99%REL CONF 11/98%
MS 9 F&L 7 DS 11 RP 1

GLENVUE GOLD LIZZY

11654182 CAN B&W EX-92-4E-CAN
MS:94 (FA:8 RAH:8 RAW:7) F&L:92 DS:90 RP:92
2-05 2 274 8586 3.5 304 3.0 258
3-05 2 307 13368 3.4 457 3.1 409
4-07 2 306 12624 3.7 465 3.0 378
5-07 2 346 13584 3.7 497 3.0 411
6-09 2 316 13435 3.6 486 3.0 401
8-01 2 P109 16002 5.0 795 2.9 464
LIFE: 6 LAC 68117 3.7 2491 3.0 2034
AVG BCA: 259-269-245 (+25M +10F +13P)
Progeny: 2 EX, 0 VG, 0 GP 100%GP
2 Dau ME: 11856M 464F 355P (BCA: 224-238-215)

BRAEDALE GOLDWYN

10705608 CAN
GP-84-8Y-CAN GM'12 EXTRA'05 GLPI 2568

LEXIS DUNDEE LULU

7797340 CAN B&W EX-90-5E-CAN 5*
MS:91 (FA:8 RAH:8 RAW:7) F&L:90 DS:91 RP:90
3-08 2 338 13149 3.5 460 3.1 408
4-11 2 365 14421 3.4 496 3.1 453
6-03 2 365 14448 3.5 509 3.1 448
7-11 2 358 14523 3.5 514 3.0 436
9-01 2 344 15264 3.6 547 3.1 473
LIFE: 7 LAC 97688 3.5 3402 3.1 3016
AVG BCA: 245-228-236 (+44M +23F +35P)
Progeny: 2 EX, 2 VG, 2 GP, 100%GP
6 Dau ME: 12967M 470F 391P (BCA: 245-241-237)

3rd - 11th Dams:

Idee Larissa EX-2E-CAN 21*
6-05 2 365 15576 4.1 632 3.3 508
LIFE: 4 LAC 61780 4.0 2502 3.4 2108
· 5 EX & 19 VG daughters
· HM All-Atlantic Senior 3-Year-Old 2001
Ravenswell Lydia EX-92-USA DOM 19*
5-01 2 365 11149 4.6 510 3.4 375
Dam of Idee Lustre (EX-95-3E 10*)
· All-Canadian & Reserve All-American 5-Yr-Old 2002
· Grand Champion, Royal '02
Spring Farm Miss Lynn-ET VG-85-CAN-3YR
2-11 2 329 10131 4.0 403 3.6 368
Spring Farm Miss Connie VG-88-CAN 2*
8-00 2 305 9716 3.9 381
Spring Farm Miss Citation VG-87-CAN 3*
6-04 2 365 12576 3.8 478
LIFE: 11 LAC 97759 3.7 3607
Spring Farm Miss Pathfinder EX-CAN 8*
10-06 2 365 11947 3.5 419
LIFE: 12 LAC 10978 3.6 3998
Spring Farm Fond Pathfinder VG-CAN 5*
Evermot Pathfinder Ormsby VG-CAN 3*
Evermot Pabst Ormsby VG-CAN 3*



Crossbrook Magic Genie Darcy ET VG-86
Dam of Lot 58



Huronia Centurion Veronica EX-97-5E
4th Dam of Lot 58



BESLEA KINGSDALE VIP *Datsun* ET

JECANF 13452130 B: 03 Sep 2020

Consigned by:
 Beslea Farms Ltd &
 Kingsdale Jersey Farm
 519-217-4352

RIVER VALLEY VENUS V I P

8403126479167
 CAN-GEV: (12/20) -663M, -24F, +0.16%
 -23P, +0.03% RPT.85%
 CAN-ETA: (12/20) +12 FC, 75% RPT, 99 RK,
 +1311 GLPI, +64 PRO\$

CROSSBROOK MAGIC GENIE DARCY ET

67393252 USA VG-86 (2-01)
 MS:86 F&L:87 DS:88 RP:86

- Reserve All-Canadian Milking Yearling 2018
- All-Ontario Milking Yearling 2018
- 7th Milking Yearling, International Jersey Show '18
- 3rd Fall Yearling, Midwest Spring Show '18
- Junior Champion, WI State Fair '17

RIVER VALLEY MAGIC GENIE-ET

8403013097991
 GLPI 1887

CROSSBROOK HG DORATHY ET

67305126 USA VG-88 (3-10)
 1-10 2 282 5577 5.1 286 3.6 203
 2-10 1 305 9095 5.5 504 3.8 342

Full Sister:

CROSSBROOK HG DIXIE-ET (EX-93)

- HM All-Canadian Senior 3-Year-Old 2016
- Nom. ABA All-American Senior 3-Year-Old 2016
- All-Canadian Senior 2-Year-Old 2015
- ABA All-American Milking Yearling 2014
- Intermediate & Reserve Grand, Royal '15

3rd - 10th Dams:

- Arethusa Veronicas Dasher-ET** EX-95-4E-USA
- Nom. ABA All-American Aged Cow 2012
- Res. All-American Senior 2-Year-Old 2008
- Huronia Centurion Veronica** EX-97-5E-USA
- Canadian Jersey Cow of the Year 2011
- Supreme Champion, WDE '04 & '06
- All-American Aged Cow 2008
- National Grand Champion 2004
- All-Canadian Senior 2-Year-Old 2002
- Reserve All-Canadian Milking Yearling 2001
- Genesis Renaissance Vivianne** VG-87-CAN
- Genesis Juno Virginia** EX-91-4E-CAN
- Swissbell F Veronica** SUP-EX 4*
- Swissbell Ella Virginia** EX-91-CAN
- Swissbell Virginia** SUP-EX 90
- Belmont Jester Virginia** SUP-EX



JL latola Sophie EX-93-2E
 Maternal Sister to the Grandam of Lot 59



JL Colton Snowwhite VG-87
 From the Same Family as Lot 59
 Nom. All-Ontario Milking Yearling 2019



JL CASINO *Shelby*

JECANF 13377765 B: 06 Jun 2020

Consigned by:

Jordan & Lucas Raymer
 519-535-3067

ELLIOTS REGENCY CASINO ET

840 3125141657
 CAN-GEBV: (12/20)
 +581M, +20F;-0.14% +34P,+0.16% RPT.90%
 CAN-ETA:(12/20)
 +5 FC,81% RPT,81 RK, +1635 GLPI, +1169 PRO\$

JL VALSON SHAYLA

8809894 CAN VG-85 (3-03)
 MS: 85 F&L: 87 DS: 85 RP: 82
 1-10 2 305 5202 4.8 247 3.7 193
 2-10 2 235 6225 4.8 297 3.8 238
 AVG BCA: 217-193-212 (-23M -32F -33P)

DEERVIEW VALSON-ET

67242274 CAN

JL DRAGON'S STARBRIGHT

8809888 CAN VG-87 (4-02)
 MS: 87 F&L: 87 DS: 88 RP: 87
 1-08 2 305 5540 4.7 261 4.0 219
 2-10 2 295 6867 5.0 345 4.0 276
 3-10 2 305 6833 4.8 327 4.1 282
 4-10 2 125 7471 4.6 344 4.2 310
 LIFE: 4 LAC 23159 4.8 1102 4.4 935
 AVG BCA: 239-213-254
 Progeny: 0 EX, 1 VG, 0 GP 100%GP

**BRI-LIN REN'S SOFIE
 EX-90-CAN**

Jersey Canada Cow of the Year 2012
 Dam of Milo Vindication Season-ET (EX-94)
 All-Canadian Mature Cow 2012
 ABA All-American Mature Cow 2012
 ABA All-American 4-Year-Old 2010
 ABA Res. All-American Senior 3-Year-Old 2009

3rd - 9th Dams:

JL Action Stacy EX-90-4E-CAN 3*

7-03 2 305 9281 3.7 347 3.7 346
 LIFE: 8 LAC 70682 3.8 2654 3.8 2687

JL Hired Gun's Sierra EX-90-2E-CAN 2*

7-01 2 305 7767 4.5 348 3.7 286
 LIFE: 8 LAC 54463 4.6 2478 3.8 2069

- 2 Mature Cow, Oxford '14

Bri-Lin Regal Salma ET VG-87-CAN 1*

5-04 2 305 7218 4.9 351 3.7 269

Bri-Lin Imperial Snow VG-86-CAN 11*

6-06 2 305 8902 5.2 465 3.9 350
 LIFE: 8 LAC 62747 5.4 3382 4.2 2602

Diarwood Silver Snowball 5S VG-85-CAN

8-07 2 305 6417 6.3 402 4.6 294

Diarwood Julie Spot 3J VG-86-CAN

LIFE: 9 LAC 50,214 4.4 250 3.7 212

Diarwood Shelta's Beauty VG-86-CAN



Bri-Lin Valson Spritz EX-94-USA
From the Same Family of Lot 60
Grand Champion, World Dairy Expo 2019



Bri-Lin Colton Salsa VG-88
Maternal Sister to the 3rd Dam of Lot 60
HM Grand Champion, Stratford '19



BRI-LIN KALAHARI *Shakia*

JECANF 13377747 B: 05 Dec 2020

Consigned by:

Brian & Linda Raymer
 519-535-4100

FOREST GLEN KALAHARI

67650122 USA
 CAN-GEV: (12/20)
 +1242M, +69F, +0.07% +70P, +0.30% RPT.77%
 CAN-ETA: (12/20)
 +5(MACE) FC, 69% RPT, 81 RK, +2025(MACE) GLPI,
 +2601 PRO\$

BRI-LIN DOMINATE SHANNON

13377700 CAN

GOLDEN DOMINATE ET

12344082 CAN

BRI-LIN COUNCILLER SHADE

12215918 CAN GP-83 (2-06)
 MS: 83 F&L: 88 DS: 82 RP: 81
 2-01 2 305 4987 5.6 281 4.1 202
 AVG BCA: 205-213-220 (-39M -15F -27P)

BRI-LIN REN'S SOFIE
EX-90-CAN

Jersey Canada Cow of the Year 2012
Dam of Milo Vindication Season-ET (EX-94)
All-Canadian Mature Cow 2012
ABA All-American Mature Cow 2012
ABA All-American 4-Year-Old 2010
ABA Res. All-American Senior 3-Year-Old 2009

3rd - 9th Dams:

Bri-Lin Terpster Shadow GP-84-CAN

Bri-Lin Jade Saki ET VG-87-CAN

8-08 2 305 8167 5.4 443 4.1 334
 LIFE: 9 LAC 64102 5.4 3488 4.0 2536

Bri-Lin Ren Sophia VG-87-CAN 2*

7-04 2 305 7523 5.5 414 4.1 305

· 2nd Intermediate Calf, Oxford '98

· Maternal Sister to Bri-Lin Ren's Sofie (EX-90)

Bri-Lin Imperial Snow VG-86-CAN 11*

6-06 2 305 8902 5.2 465 3.9 350
 LIFE: 8 LAC 62747 5.4 3382 4.2 2602

Diarwood Silver Snowball 5S VG-85-CAN

8-07 2 305 6417 6.3 402 4.6 294

Diarwood Julie Spot 3J VG-86-CAN

LIFE: 9 LAC 50,214 4.4 250 3.7 212

Diarwood Shelta's Beauty VG-86-CAN



HIRD'S M *Victorious*

JECANF 13416007 B: 15 Mar 2020

Consigned by:
Nathan Wade
519-535-8073

KCJF HIRED MAGICIAN

840 3138865447
CAN-GEBV: (12/20)
-1142M, -42F, +0.26%, -39P, +0.08% RPT.65%
CAN-ETA: (12/20)
+10(PA) FC, 57% RPT, 97 RK, +1115(PA) GLPI,
-566 PRO\$

HIRD'S C VICTORIOUS

12062881 CAN VG-85 (4-03)
MS:85 F&L:85 DS:88 RP:86
2-11 2 305 6928 5.0 346 3.5 243
4-03 2 305 6677 5.2 344 3.7 244
5-06 2 281 6422 4.8 305 3.6 230
AVG BCA: 193-193-199 (-7M -10F -20P)

BRIDON REMAKE COMERICA-ET

8422994 CAN
EX-90 (3-03)

HIRD'S BLACKSTONE VICTORIOUS

11636607 CAN

3rd - 8th Dams:

Hird's Levon Victorious 14T GP-82-CAN

4-11 2 305 8471 5.9 498 4.5 379
· Gold & Silver Awards

Hird's Rep Victorious 9P

Hird's On Line Victorious 15M VG-87-CAN
6-04 2 305 8736 4.5 395 3.7 321
LIFE: 6 LAC 45203 4.6 2084 3.7 1686

Hird's CDJ Victorious 9K

3-03 2 305 7017 5.5 386 3.7 262

Hird's Imperial Victorious 16B EX-90-CAN

6-08 2 305 5912 4.9 291 4.1 241

· 2nd Mature Cow, Oxford '98

· 3rd 3-Year-Old, Oxford '96

Hird's Fag Victorious 16M VG-87-CAN

5-10 2 305 6049 4.8 293 4.0 240



HIRD'S BILLINGS *Alfie*

JECANF 13880827 B: 11 Jun 2020

Consigned by:
Nathan Wade
519-535-8073

SNAFU HOLBRIC BILLINGS

119166365 USA
CAN-GEBV: (12/20)
-763M, -17F, +0.33%, -13P, +0.23% RPT.88%
CAN-ETA: (12/20)
+8 FC, 75% RPT, 95 RK, +1008 GLPI, -648 PRO\$

HIRD'S ANDREAS ALFIE

12916970 CAN VG-85 (2-00)
MS:85 F&L:86 DS:85 RP:87
1-11 2 230 4350 4.5 195 3.8 167
AVG BCA: 184-154-185 (-44M -61F -46P)
· 2nd Summer Yearling, Oxford-Southwestern '19

SUNSET CANYON ANDREAS

117597125 USA

TANBARK VERBATIM ALFIE

12265574 CAN GP-82 (2-01)
MS:85 F&L:86 DS:85 RP:87
1-11 2 305 5686 4.7 269 3.6 207
AVG BCA: 241-212-230 (+23M +13F +14P)
Progeny: 0 EX, 1 VG, 0 GP, 1 G, 50%GP

3rd - 6th Dams:

Tanbark Premier Alfalfa VG-86-CAN

6-10 2 305 8912 5.0 442 4.0 353
LIFE: 6 LAC 53621 5.0 2701 4.0 2152

· 3rd Summer Yearling, Ontario Spring '13

· 8th Summer Yearling, Royal '13

Pleasant Nook Raptor Mirella EX-90-2E-CAN 2*

8-07 2 305 7338 5.2 383 3.8 282

· Silver Award 2009

Pleasant Nook D C Mystery SUP-EX-91-10E 5*

13-04 2 305 9481 4.5 423 3.9 373
LIFE: 14 LAC 121164 5.1 6155 3.9 4734

· Platinum Award 2002

· 3X Gold & 3X Silver Award

· 2X Grand & 2X Reserve Grand, Golden Horseshoe

Roselor B SV Mystery VG-87-CAN

2-01 2 297 5568 5.5 306 4.2 231

· Nom. All-Canadian Junior Yearling 1995

Index

- | | | |
|---|--------------------------------------|---|
| 13.....1 Flush By McIntosh Embryo Transfer | 32.....Rensiem Killcroft Rustler | 11.....Unix Embryo x Avant-Garde Door Stellar |
| 14.....1 Flush Kirkton Vet Services | 16.....Ronbeth Jacoby Shania | 53.....Van1469 Sidekick Weston |
| 56.....Altitude Embryos x Westcoast Crown Asparagus P | 33.....Ronbeth Tadoo Prisha | 51.....Walnutlawn Discjockey Brynn |
| 45.....Armcrest Overwing Beatrice | 8.....Roughriver Delta Tinsley | 31.....Werrcroft Lautraust Limewire |
| 43.....Aspiration Axl Lotus | 3.....Silvercap Mirand Tawnya | 22.....Winbel Mirand Samara |
| 58.....Beslea Kingsdale VIP Datsun | 49.....Spero Valiant Trpc Miami Heat | 38.....Windknoll Bardo Lilac |
| 60.....Bri-Lin Kalahari Shakia | 44.....Thamesdale Phantom Seabiscuit | |
| 4.....Calmac Maestro Hopscotch | 34.....Unique Unstopabull Latte | |
| 36.....Carldot Discjockey Connie | | |
| 21.....Casson Kangaroo Tango | | |
| 1.....CDX-Roszell M&M | | |
| 39.....Cedarpatch Alligator Chaching | | |
| 40.....Crovalley Denver Alcan | | |
| 9.....Dairydale Mirand Ginger P | | |
| 35.....Dandyland Doorman Aurora | | |
| 2.....Delcreek Hope For Brooks | | |
| 57.....Doorman Embryos x Glenvue Gold Lizzy | | |
| 19.....Dream Maker Dempsey Anne | | |
| 37.....Dutcholm Doorman Eclectic | | |
| 52.....Dutcholm Sidekick Murtle | | |
| 27.....Fraeland Atomic Spice Red | | |
| 10.....Goldwyn Embryo x Heather Holme Dundee Malibu | | |
| 18.....Hanalee Bardo Chance | | |
| 23.....Hanalee Doorman Heart | | |
| 17.....Hanalee King Royal Jane | | |
| 49.....HC14843631 Kingboy Lala Land | | |
| 62.....Hird's Billings Alfie | | |
| 61.....Hird's M Victorious | | |
| 41.....Hodglynn Dazzling Silver | | |
| 5.....Hulsdale Adagio Maionni P | | |
| 7.....Janefield Impression Priceless | | |
| 6.....Janefield Impression Priscilla | | |
| 59.....JL Casino Shelby | | |
| 50.....Karnview Sidekick Dejavu | | |
| 29.....Killcroft Jacoby Iggy | | |
| 47.....Knonaudale Lite The Way | | |
| 26.....Lilyking Kingboy Abria | | |
| 25.....Lilyking Unix Fanta | | |
| 15.....Maker Gangster Robbery | | |
| 28.....Mapel Wood Lipgloss | | |
| 55.....Maplebrough Sidekick Leanna | | |
| 12.....Markridge Denver Ariel | | |
| 54.....New Galma Dempsey Leanora | | |
| 20.....Perennial Tstorm Cabernet | | |
| 42.....Quality Luster Farrah | | |
| 46.....Ranhaven Jazzy | | |
| 24.....Ranhaven Jemma | | |
| 30.....Ranhaven Lyster | | |



Keeping the farm
going since 1893.

We understand that downtime on a farm is costly.

Our goal is to get your operation back up and running as quickly as possible with personal service that treats you like a neighbour, not a number.

Whether it's the family farm or a larger agricultural operation, we will provide an ideal insurance solution based on your individual coverage needs.

Contact us today, we look forward to hearing from you.



**Ayr Farmers
Mutual
Insurance Company**

1 800 265 8792
www.ayrmutual.com

HOME • FARM • AUTOMOBILE • COMMERCIAL



Frosted Flour Co.



CAKES · CUPCAKES · COOKIES

Port Hope, Ontario

www.FrostedFlourCo.ca

Follow them on Instagram

@frostedflourco



Take the right step towards
HAPPY HEALTHY COWS



 **ANKA**
Hoof Care

TRIM CHUTES

Anka the only all stainless chute for farms & professionals.

- 100% Stainless
- Quiet running
- Low maintenance
- Cow & trimmer comfort
- Efficient cow flow

Rippleview
Hoof Care

Training & Consulting

Jamie Sullivan • 204-771-8943 • rippleviewhoofcare.com

REDUCE COSTS.
MAXIMIZE PERFORMANCE.



ECOLAC
DAIRY PREMIXES



EcoLac® Dairy premixes have been developed to maximize cow health, milk production and feed intake all while reducing the cost of producing a liter of milk. EcoLac® brand premixes are the backbone of Grand Valley Fortifiers and Fortified Nutrition Ltd. dairy premix products and contain specially selected ingredients for higher absorption and improved animal performance.

Talk to your FNL or GVF Dairy Specialist or one of our Dairy Nutritionists today to learn more about the benefits of EcoLac® Dairy premixes.

Grand Valley Fortifiers
Nutrition Direct

**FORTIFIED
NUTRITION** LIMITED

AB/SK: 1-866-610-5770
MB: 1-866-626-3933
fortifiednutritionltd.com

Grand Valley
FORTIFIERS
FOR SOUND NUTRITION

1-877-625-4400
grandvalley.com



Advanced Animal Nutrition for Improved Human Health

Canadian Family Owned

