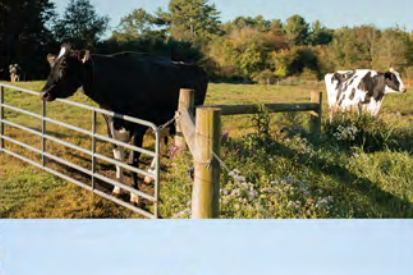


ARETHUSA

PEDIGREE & PRODUCTION SALE

MAY 13, 2020 • 11AM





Arethusa Farm

MAY 13, 2020 • 11AM

GPS: 556 SOUTH PLAINS RD LITCHFIELD CT 06759 OR CALL FOR DIRECTIONS

Sale Staff

CHRIS A. HILL
202-255-7907
Auctioneer (AU005197)

TIM ABBOTT
802-238-1142
Pedigrees

NICK RAGGI
443-762-8338
Ringman

DAVID J. LENTZ
717-329-9202
Ringman

MICHAEL HEATH
443-375-8048
Ringman

ABE LIGHT
315-651-7410
Ringman

BOB LANDIS
717-413-1232
Ringman

JEFF PEIFER
717-371-3003
Ringman

Fitting Crew

CHRIS CURTISS
518-378-2800

MADISON FISHER
717-422-1907

TIM SEIPT
610-984-7212

MATT OECSLE
419-605-2810



LIVE INTERNET BIDDING: WWW.COWBUYER.COM

Special note:

Due to health regulations at the state and national level and in an effort to keep everyone safe we will be conducting this sale via the internet. You are welcome to talk to any of our qualified sales staff, fitting crew or make an appointment to visit the farm yourself.

You may set up an appointment with Matt Senecal, Farm Manager, Arethusa Farms 401-714-7113 to view cattle. We will not be able to accommodate people at the sale on sale day. We ask you to contact any of our sales staff with bids or to be on the phone or join us online at cowbuyer. It will be a live auction on the internet with starting minimum bid of \$1000 (or less) on all lots.



Tim & Sharyn Abbott
2593 E. Sheldon Road
Enosburg, VT 05450
802-238-1142

Sale Manager



Chris & Jennifer Hill
8517 Orndorff Road
Thurmont, MD
202-255-7907 Cell
salesflash@comcast.net

ARETHUSA FARM



EO SIEMERS ASHLYNS ANGEL-ET EX-96 EEEEE 3E GMD
DAM OF LOTS 1 & 2

Maternal sisters to Lots 1-3
Arethusa Goldwyn Avenue-ET EX-93
Arethusa Fever Annette-ET EX-92
Arethusa Fever Angora-ET EX-92
Arethusa Doorman Avichii-ET EX-92
Arethusa Fever Anistyn-ET EX-92
Butz-Butler Durham Angel-ET EX-90

1

ARETHUSA MCUTCHEM AZALEA-ET

840003200653172 99%RHA-I
 Born: March 6, 2018 • Herd No. 200
 Fresh: March 4, 2020
 Milking: 74# 4.0F 2.9P SCC 47,000
 • Sells Open

2

ARETHUSA ANGELS ADELE-ET

72869735 Excellent-90 EX-MS 2E *RC *TL
 Born: June 15, 2013 • Herd No. 606
 5-09 2x 305d 33850 3.6 1216 3.1 1035
 3-02 2x 353d 29650 3.9 1170 3.2 934
 4-04 2x 303d 25580 3.8 973 3.1 789
 2-02 2x 297d 24120 3.9 939 3.0 726
 Life: 1258d 113200 3.8 4298 3.1 3484
 • Sells Dry
 Due: June 16, 2020 to Ri-Val-Re Rager Red-ET 7H012344

De-Su Bkm Mccutchen 1174-ET **And** **Khw Elm-Park Acme-ET**
 69990138 Excellent-93 EEEE *TR *TP *TC *TY *TV *TL
 PTA +326M +28F +13P 99R 4/20
 PTA -0.6PL 2.91SCS -2.2DPR 6.2%DCE
 PTA +2.22T +1.44UDC +1.22FLC 99R 4/20
 GTPI +2264G

EO Siemers Ashlyns Angel-ET
 60811262 Excellent-96 EEEEE 3E GMD
 4-03 2x 365d 41370 4.2 1749 3.1 1277
 9-10 2x 365d 39800 6.0 2383 3.0 1177
 6-07 2x 316d 39660 4.3 1686 3.1 1211
 7-06 2x 365d 39370 4.7 1852 2.9 1129
 2-04 2x 365d 31970 4.7 1498 3.3 1046
 Life: 2243d 225080 4.8 10836 3.1 6908
 • Res All-American Sr 2-Yr-Old Cow 2006

Comestar Stormatic-ET
 6947936C Excellent-CAN *CD *TV
 PTA -366T -42F -25P 99R 4/20
 PTA -.08T -.97UDC +1.43FLC GTPI +1462G

Tri-Day Ashlyn-ET
 17181481 Excellent-96 EEEEE 2E GMD DOM
 4-09 2x 365d 43090 4.8 2079 3.5 1503
 3-08 2x 348d 38570 4.3 1675 3.4 1129
 6-09 2x 294d 33330 4.7 1563 3.5 1183
 Life: 1374d 144770 4.6 6665 3.5 5135

Full Sister to Ashlyn
Tri-Day Adeem-ET EX-93
 • Four Times All-American Winner
 • Nom All-Time All-American Sr-2-Yr Old

Maternal sisters to Angel
Ernest-Anthony Aphrodite-ET EX-95 EEEEE 2E
EK-Oseana Ambrosia EX-95 EEEEE EX-MS 2E
Ernest-Anthony Alaina-ET EX-95
Kingsmill Ashlyns Audrey-ET EX-94
Kingsmill Ashlyns Amanda-ET EX-94
Kingsmill Ashlyns Aisha-ET EX-94
Kingsmill Ashlyns Ashore-ET EX-94
St-Jacob Stormatic Adel-ET EX-94
St-Jacob Destry Anya-ET EX-94

3rd & 4th Dams
Bendy-Brook Odyssey Favorite EX-92 EVEEE 2E DOM
 6-01 2x 337d 22670 3.4 770 3.1 706
 4-11 2x 317d 21410 3.4 721 3.1 658
 • Res All-American Produce of Dam 2001
Bendy-Brook Star Fonda VG-86 VG-MS
 3-11 2x 290d 23390 3.5 826 3.1 724
 5-09 2x 312d 22340 3.3 734 3.0 680



KINGSMILL ASHLYNS ANNISA-ET EX-92
MATERNAL SISTER TO DAM OF LOT 3

3

ARETHUSA GC AMAZON-ET

840003141281725
Born: October 30, 2016 • Herd No. 1725
2-09 2x 211d 14521 3.2 469 3.0 442 RIP
Fresh: August 12, 2019
Milking: 57# 4.5F 3.2P SCC 33,000

Due: July 30, 2020 to Blondin Zimmer Capture-ET
224H04507

Maternal sisters to Lots 1-3

- Arethusa Goldwyn Avenue-ET EX-93**
- Arethusa Fever Annette-ET EX-92**
- Arethusa Fever Angora-ET EX-92**
- Arethusa Doorman Avichii-ET EX-92**
- Arethusa Fever Anistyn-ET EX-92**
- Butz-Butler Durham Angel-ET EX-90**

Maternal sisters to Angel

- Ernest-Anthony Aphrodite-ET EX-95 EEEEE 2E**
- EK-Oseeana Ambrosia EX-95 EEEEE EX-MS 2E**
- Ernest-Anthony Alaina-ET EX-95**
- Kingsmill Ashlyns Audrey-ET EX-94**
- Kingsmill Ashlyns Amanda-ET EX-94**
- Kingsmill Ashlyns Aisha-ET EX-94**
- Kingsmill Ashlyns Ashore-ET EX-94**
- St-Jacob Stormatic Adel-ET EX-94**
- St-Jacob Destry Anya-ET EX-94**

Mr Chassity Gold Chip-ET

140145553 Excellent-95 *TR *TP *TY *TV *TL
PTA -667M -24F -40P 99R 4/20
PTA +.0PL 2.78SCS -1.6DPR 5.1%DCE
PTA +1.52T +1.28UDC +1.21FLC 99R 4/20
GTPI +1748G

EO Siemers Ashlyns Angel-ET

60811262 Excellent-96 EEEEE 3E GMD
4-03 2x 365d 41370 4.2 1749 3.1 1277
9-10 2x 365d 39800 6.0 2383 3.0 1177
6-07 2x 316d 39660 4.3 1686 3.1 1211
7-06 2x 365d 39370 4.7 1852 2.9 1129
2-04 2x 365d 31970 4.7 1498 3.3 1046
Life: 2243d 225080 4.8 10836 3.1 6908
• Res All-American Sr 2-Yr-Old Cow 2006

Comestar Stormatic-ET

6947936C Excellent-CAN *CD *TV
PTA -366T -42F -25P 99R 4/20
PTA -.08T -.97UDC +1.43FLC GTPI +1462G

Tri-Day Ashlyn-ET

17181481 Excellent-96 EEEEE 2E GMD DOM
4-09 2x 365d 43090 4.8 2079 3.5 1503
3-08 2x 348d 38570 4.3 1675 3.4 1129
6-09 2x 294d 33330 4.7 1563 3.5 1183
Life: 1374d 144770 4.6 6665 3.5 5135

Full Sister to Ashlyn

Tri-Day Adeen-ET EX-93

- Four Times All-American Winner
- Nom All-Time All-American Sr-2-Yr Old

3rd & 4th Dams

- Bendy-Brook Odyssey Favorite EX-92 EVEEEE 2E DOM**
- 6-01 2x 337d 22670 3.4 770 3.1 706
- 4-11 2x 317d 21410 3.4 721 3.1 658
- Res All-American Produce of Dam 2001
- Bendy-Brook Star Fonda VG-86 VG-MS**
- 3-11 2x 290d 23390 3.5 826 3.1 724
- 5-09 2x 312d 22340 3.3 734 3.0 680

ARETHUSA FARM



TRI-DAY ASHLYN-ET EX-96 EEEEE 2E GMD DOM
SAME FAMILY AS LOTS 1-27

4

ARETHUSA SID ANETIA

72323778 Excellent-91 EX-MS 2E
Born: November 17, 2012 • Herd No. 591
5-08 2x 365d 42410 3.7 1552 3.1 1319
3-07 2x 356d 40558 4.4 1787 3.0 1215
2-03 2x 365d 30077 4.1 1246 3.2 949
4-09 2x 276d 27656 3.7 1392 2.9 1106
Fresh: March 8, 2020

Pine-Tree Sid-ET

62175895 *TR *TP *TY *TL
PTA -827M -18F -23P 99R 4/20
PTA -4.0PL 3.02SCS -5.0DPR 8.2%DCE
PTA +1.47T +.93UDC -.86FLC 99R 4/20
GTPI +1550G

Angelas Jasper Angelic-ET

69369369 Excellent-90 VEVVE
2-11 2x 349d 23560 4.0 931 3.0 709
4-02 2x 238d 21380 4.2 896 2.9 617
1-11 2x 328d 18060 4.0 715 3.1 551

Wilcoxview Jasper-ET

128620869 *TV *TL *TD
PTA -1291M -13F -45P 99R 4/20
PTA +1.11T -.03UDC -.60FLC GTPI +1329G

Arethusa Durham Angela-ET

138808264 Excellent-91 EEEEE
3-09 2x 340d 25090 3.7 925 3.0 753
2-05 2x 305d 20580 4.2 860 3.5 712

Maternal sisters to Angel

Ernest-Anthony Aphrodite-ET EX-95 EEEEE 2E
EK-Oseeana Ambrosia EX-95 EEEEE EX-MS 2E
Ernest-Anthony Alaina-ET EX-95
Kingsmill Ashlyns Audrey-ET EX-94
Kingsmill Ashlyns Amanda-ET EX-94
Kingsmill Ashlyns Aisha-ET EX-94
Kingsmill Ashlyns Ashore-ET EX-94
St-Jacob Stormatic Adel-ET EX-94
St-Jacob Destry Anya-ET EX-94

3rd-6th Dams

EO Siemers Ashlyns Angel-ET EX-96 EEEEE 3E GMD
4-03 2x 365d 41370 4.2 1749 3.1 1277
Life: 2243d 225080 4.8 10836 3.1 6908
• Res All-American Sr 2-Yr-Old Cow 2006
Tri-Day Ashlyn-ET EX-96 EEEEE 2E GMD DOM
4-09 2x 365d 43090 4.8 2079 3.5 1503
Life: 1374d 144770 4.6 6665 3.5 5135
Bendy-Brook Odyssey Favorite EX-92 2E DOM
6-01 2x 337d 22670 3.4 770 3.1 706
4-11 2x 317d 21410 3.4 721 3.1 658
• Res All-American Produce of Dam 2001
Bendy-Brook Star Fonda VG-86 VG-MS
3-11 2x 290d 23390 3.5 826 3.1 724
5-09 2x 312d 22340 3.3 734 3.0 680

5

ARETHUSA SID APRICOT-ET

840003137803032
 Born: April 3, 2017 • Herd No. 763
 1-11 2x 308d 14380 3.2 460 3.2 453
 • Sells Dry

Due: June 16, 2020 to Woodcrest King Doc
 250HO12961

Pine-Tree Sid-ET

62175895 *TR *TP *TY *TL
 PTA -827M -18F -23P 99R 4/20
 PTA -4.0PL 3.02SCS -5.0DPR 8.2%DCE
 PTA +1.47T +.93UDC -.86FLC 99R 4/20
 GTPI +1550G

Arethusa Fever Angora-ET

71311369 Excellent-92 EX-MS 2E *TR *TC *TL
 5-03 2x 365d 53150 3.6 1933 3.1 1646
 3-09 2x 326d 34060 3.7 1273 2.9 993
 2-03 2x 365d 26520 4.8 1282 3.0 800
 Life: 1440d 160440 4.2 6809 3.0 4788

Maternal sister to Angora

Arethusa Affection-ETS EX-92 EX-MS

- All-American Milking Yearling 2009
- 1st Sr Milking Yearling WDE 2009
- 1st Sr Milking Yearling Eastern Fall Nat'l 2009
- 5th Sr 2-Yr-Old North-East Fall Nat'l 2010

6

ARETHUSA BLAKE AURORA

840003210910877 99%RHA-I
 Born: March 15, 2019 • Herd No. 822
 Sire: **Walnutlawn Blake-ET**
 Dam: **Arethusa Sid Apricot-ET** (Sells as Lot 5)

Crackholm Fever-ET

103631566C Excellent-93 *TR *TP *TY *TL
 PTA -477M +9F -13P 99R 4/20
 PTA +.57T -.04UDC +.03FLC GTPI +1980G

EO Siemers Ashlyns Angel-ET

60811262 Excellent-96 EEEEE 3E GMD
 4-03 2x 365d 41370 4.2 1749 3.1 1277
 9-10 2x 365d 39800 6.0 2383 3.0 1177
 6-07 2x 316d 39660 4.3 1686 3.1 1211
 7-06 2x 365d 39370 4.7 1852 2.9 1129
 2-04 2x 365d 31970 4.7 1498 3.3 1046
 Life: 2243d 225080 4.8 10836 3.1 6908



ARETHUSA SID ABBYSS
 FULL SISTER TO LOT 5

3rd-5th Dams

Tri-Day Ashlyn-ET EX-96 EEEEE 2E GMD DOM
 4-09 2x 365d 43090 4.8 2079 3.5 1503
 Life: 1374d 144770 4.6 6665 3.5 5135
Bendy-Brook Odyssey Favorite EX-92 2E DOM
 6-01 2x 337d 22670 3.4 770 3.1 706
 4-11 2x 317d 21410 3.4 721 3.1 658
 • Res All-American Produce of Dam 2001
Bendy-Brook Star Fonda VG-86 VG-MS
 3-11 2x 290d 23390 3.5 826 3.1 724
 5-09 2x 312d 22340 3.3 734 3.0 680

7

ARETHUSA SOLOMON AROMA

840003137803074 99%RHA-I
 Born: September 1, 2018 • Herd No. 805

Due: August 2, 2020 to Eclipse Atwoods Archrival-IMP-ET
 187HO01000

"Milking yearling prospect!"

Maternal sisters to Angel

- Ernest-Anthony Aphrodite-ET EX-95 EEEEE 2E**
- EK-Oseeana Ambrosia EX-95 EEEEE EX-MS 2E**
- Ernest-Anthony Alaina-ET EX-95**
- Kingsmill Ashlyns Audrey-ET EX-94**
- Kingsmill Ashlyns Amanda-ET EX-94**
- Kingsmill Ashlyns Aisha-ET EX-94**
- Kingsmill Ashlyns Ashore-ET EX-94**
- St-Jacob Stormatic Adel-ET EX-94**
- St-Jacob Destry Anya-ET EX-94**

Walnutlawn Solomon-ET

11775998C 99%RHA-I *TR *TP *TY *TV *TL
 PTA -425M -16F -7P 99R 4/20
 PTA -1.7PL 2.88SCS +.2DPR 8.1%DCE
 PTA +2.71T +1.71UDC +.58FLC 98R 4/20
 GTPI +1988G

Arethusa Bradnick Abbie

840003126029599 Very Good-87 VG-MS
 3-09 2x 320d 36754 3.0 1102 3.1 1129
 2-03 2x 365d 34249 3.2 1093 3.2 1084

Regancrest-GV S Bradnick-ET

66625940 Excellent-96 EEEE *TR *TP *TY *TV *TL
 PTA +475M -45F -3P 99R 4/20
 PTA +1.71T +1.79UDC +1.79FLC GTPI +1849G

Arethusa Angels Americana

70871939 Excellent-91 EX-MS
 4-06 2x 354d 43204 4.1 1753 3.2 1378
 3-04 2x 313d 33853 4.4 1499 3.1 1041
 2-04 2x 294d 21723 4.4 964 3.2 689

3rd-6th Dams

EO Siemers Ashlyns Angel-ET EX-96 EEEEE 3E GMD
 4-03 2x 365d 41370 4.2 1749 3.1 1277
 Life: 2243d 225080 4.8 10836 3.1 6908
 • Res All-American Sr 2-Yr-Old Cow 2006
Tri-Day Ashlyn-ET EX-96 EEEEE 2E GMD DOM
 4-09 2x 365d 43090 4.8 2079 3.5 1503
 Life: 1374d 144770 4.6 6665 3.5 5135
Bendy-Brook Odyssey Favorite EX-92 2E DOM
 6-01 2x 337d 22670 3.4 770 3.1 706
 4-11 2x 317d 21410 3.4 721 3.1 658
 • Res All-American Produce of Dam 2001
Bendy-Brook Star Fonda VG-86 VG-MS
 3-11 2x 290d 23390 3.5 826 3.1 724
 5-09 2x 312d 22340 3.3 734 3.0 680

ARETHUSA FARM



ARETHUSA FEVER ALMIRA EX-94 EEEEE
FULL SISTER TO LOT 8 & 2ND DAM OF LOT 9

Maternal sisters to Angel

Ernest-Anthony Aphrodite-ET EX-95 EEEEE 2E
EK-Oseeana Ambrosia EX-95 EEEEE EX-MS 2E
Ernest-Anthony Alaina-ET EX-95
Kingsmill Ashlyns Audrey-ET EX-94
Kingsmill Ashlyns Amanda-ET EX-94
Kingsmill Ashlyns Aisha-ET EX-94
Kingsmill Ashlyns Ashore-ET EX-94
St-Jacob Stormatic Adel-ET EX-94
St-Jacob Destry Anya-ET EX-94

8

ARETHUSA FEVER ALANNIS-ET

71471971 Excellent-91 EX-MS
 Born: September 28, 2011 • Herd No. 570
 4-00 2x 349d 41990 3.5 1451 2.9 1208
 7-01 2x 343d 41820 4.1 1717 3.0 1234
 5-01 2x 286d 38910 4.2 1638 2.8 1108
 6-01 2x 267d 37110 3.3 1240 2.9 1093
 2-08 2x 365d 35510 5.0 1770 2.9 1046
 1-09 2x 249d 12550 3.9 493 3.2 396
 8-02 2x 97d 12998 3.8 496 2.8 366 RIP
 Fresh: December 4, 2019
 Milking: 122# 4.0F 2.7P SCC 19,000
 Bred: April 2, 2020 to Brenland Denver 94H018518

9

ARETHUSA UNIX ALLIYAH

840003137803080
 Born: November 1, 2018 • Herd No. 811
 Sire: **Croteau Lesperron Unix-ET 777H003913**
 Dam: **Arethusa Fever Alannis-ET** (Sells as Lot 8)
 Due: December 2, 2020 to Luck-E Awesome (Sexed Semen)76H01603 or Milksourse Cheers 94H019074

Full sister to Alannis

Arethusa Fever Almira-ET EX-94 EEEEE *TL *TD

- 1st Aged Cow/HM Sr Champ MD State Fair 2018
- Unanimous All-American Sr. 2-Yr-Old 2014
- 1st Sr. 2-Yr-Old Int'l Holstein Show 2014
- 1st Sr. 2-Yr-Old Eastern Fall National 2014
- Res. All-American Milking Yearling 2013
- 2nd Milking Yearling Int'l Holstein Show 2013
- 4th generation of All-American Winners

Maternal sister to Alannis

Arethusa After All-ET EX-92 EX-MS

4-02 2x 365d 32532 3.5 1116 2.9 940

Crackholm Fever-ET

103631566C Excellent-93 *TR *TP *TY *TL
 PTA -477M +9F -13P 99R 4/20
 PTA +0.7PL 2.83SCS -0.3DPR 7.3%DCE
 PTA +.57T -.04UDC +.03FLC 99R 4/20
 GTPI +1980G

Arethusa Affection-ETS

139044997 Excellent-92 EX-MS
 2-10 2x 305d 27260 4.1 1120 2.9 783
 4-09 2x 310d 24830 4.6 1130 3.0 757
 5-10 2x 244d 22680 5.1 1168 2.9 656
 • All-American Milking Yearling 2009
 • 1st Sr Milking Yearling WDE 2009
 • 1st Sr Milking Yearling Eastern Fall Nat'l 2009
 • 5th Sr 2-Yr-Old North-East Fall Nat'l 2010

To-Mar D-Fortune-ET

129922003 Excellent-91 *TR *TV *TL
 PTA -2275M -60F -34P 99R 4/20
 PTA -.38T -.18UDC -.98FLC GTPI +1335G

EO Siemers Ashlyns Angel-ET

60811262 Excellent-96 EEEEE 3E GMD
 4-03 2x 365d 41370 4.2 1749 3.1 1277
 9-10 2x 365d 39800 6.0 2383 3.0 1177
 6-07 2x 316d 39660 4.3 1686 3.1 1211
 7-06 2x 365d 39370 4.7 1852 2.9 1129
 2-04 2x 365d 31970 4.7 1498 3.3 1046
 Life: 2243d 225080 4.8 10836 3.1 6908
 • Res All-American Sr 2-Yr-Old Cow 2006

3rd-5th Dams

Tri-Day Ashlyn-ET EX-96 EEEEE 2E GMD DOM

4-09 2x 365d 43090 4.8 2079 3.5 1503
 Life: 1374d 144770 4.6 6665 3.5 5135

Bendy-Brook Odyssey Favorite EX-92 2E DOM

6-01 2x 337d 22670 3.4 770 3.1 706
 4-11 2x 317d 21410 3.4 721 3.1 658

• Res All-American Produce of Dam 2001

Bendy-Brook Star Fonda VG-86 VG-MS

3-11 2x 290d 23390 3.5 826 3.1 724
 5-09 2x 312d 22340 3.3 734 3.0 680

PEDIGREE & PRODUCTION SALE



ARETHUSA AFFECTION-ETS EX-92 EX-MS
DAM OF LOTS 8 & 10
2ND DAM OF LOTS 9, 11 & 12



ARETHUSA BOSTON ALESSIA VG-88-CAN
MATERNAL SISTER TO LOTS 11 & 12

Maternal sister to Alana

Arethusa Fever Almira-ET EX-94 EEEEE *TL *TD

- 1st Aged Cow/HM Sr Champ MD State Fair 2018
- Unanimous All-American Sr. 2-Yr-Old 2014
- 1st Sr. 2-Yr-Old Int'l Holstein Show 2014
- 1st Sr. 2-Yr-Old Eastern Fall National 2014
- Res. All-American Milking Yearling 2013

10

ARETHUSA GOLDSUN ALANA-ET

840003013177379 Excellent-91 EVVEE
Born: October 16, 2013 • Herd No. 72
4-01 2x 325d 30460 4.0 1230 3.3 1004
2-05 2x 365d 28550 4.6 1323 3.3 934
5-02 2x 282d 26000 3.4 893 3.2 819
Fresh: December 8, 2019
Milking: 91 # 3.2F 3.0P SCC 123,000
Bred: April 2, 2020 to Brenland Denver
94H018518

11

ARETHUSA ARTISAN ALANA

840003210910906 99%RHA-I *RC
Born: December 8, 2019 • Herd No. 851
Sire: **Luck-E Artisan-Red-ET 7H014458**
Dam: **Arethusa Goldsun Alana-ET** (Sells as Lot 10)

12

ARETHUSA TATTOO ANGELINA

840003137803086 99%RHA-I
Born: January 1, 2019 • Herd No. 817
Sire: **Duckett Crush Tattoo-ET 7H013839**
Dam: **Arethusa Goldsun Alana-ET** (Sells as Lot 10)

"Will be serviced by sale day"

Toc-Farm Goldsun-ET

53990032335
PTA -1393M -62F -33P 99R 4/20
PTA -1.7PL 2.92SCS -3.3DPR 9.3%DCE
PTA +1.12T +1.15UDC -.66FLC 99R 4/20
GTPI +1416G

Arethusa Affection-ETS

139044997 Excellent-92 EX-MS
2-10 2x 305d 27260 4.1 1120 2.9 783
4-09 2x 310d 24830 4.6 1130 3.0 757
5-10 2x 244d 22680 5.1 1168 2.9 656
• All-American Milking Yearling 2009
• 1st Sr Milking Yearling WDE 2009
• 1st Sr Milking Yearling Eastern Fall Nat'l 2009
• 5th Sr 2-Yr-Old North-East Fall Nat'l 2010

To-Mar D-Fortune-ET

129922003 Excellent-91 *TR *TV *TL
PTA -2275M -60F -34P 99R 4/20
PTA -.38T -.18UDC -.98FLC GTPI +1335G

EO Siemers Ashlyns Angel-ET

60811262 Excellent-96 EEEEE 3E GMD
4-03 2x 365d 41370 4.2 1749 3.1 1277
9-10 2x 365d 39800 6.0 2383 3.0 1177
6-07 2x 316d 39660 4.3 1686 3.1 1211
7-06 2x 365d 39370 4.7 1852 2.9 1129
2-04 2x 365d 31970 4.7 1498 3.3 1046
Life: 2243d 225080 4.8 10836 3.1 6908
• Res All-American Sr 2-Yr-Old Cow 2006

3rd-5th Dams

Tri-Day Ashlyn-ET EX-96 EEEEE 2E GMD DOM
4-09 2x 365d 43090 4.8 2079 3.5 1503
Life: 1374d 144770 4.6 6665 3.5 5135
Bendy-Brook Odyssey Favorite EX-92 2E DOM
6-01 2x 337d 22670 3.4 770 3.1 706
4-11 2x 317d 21410 3.4 721 3.1 658
• Res All-American Produce of Dam 2001
Bendy-Brook Star Fonda VG-86 VG-MS
3-11 2x 290d 23390 3.5 826 3.1 724
5-09 2x 312d 22340 3.3 734 3.0 680

ARETHUSA FARM



ERNEST-ANTHONY ASTORIA-ET EX-94 EEEEE
DAM OF LOTS 13, 14 & 16
2ND DAM OF LOTS 15 & 17

13

ARETHUSA DOORMAN ALARM-ET

840003137803023 99%RHA-I Good Plus-80 @ 2-05
 Born: September 1, 2016 • Herd No. 754
 1-11 2x 365d 21460 5.0 1073 3.6 768
 3-02 2x 129d 11261 4.6 521 3.3 371 RIP
 Fresh: November 2, 2019
 Milking: 76# 5.5F 3.6P SCC 62,000
 Due: November 5, 2020 to Golden-Oaks Master-ET
 799H016

Full sisters to Aphrodite

EO Siemers Ashlyns Angel-ET EX-96 EEEEE 2E
 2-04 2x 511d 42535 4.6 1991 3.3 1397
 • Res All-American Sr 2-Yr-Old Cow 2006
EK-Oseeana Ambrosia EX-95 EEEEE EX-MS 2E
 6-04 2x 365d 44135 4.2 1852 3.2 1399
 • Reserve All-American 4-Year-Old 2007
 • Member All-American Produce of Dam 2009

Val-Bisson Doorman-ET

107281711C Excellent-90-CAN *TR *TP *TY *TL
 PTA -453M +14F +10P 99R 4/20
 PTA +.3PL 2.66SCS -2.0DPR 8.3%DCE
 PTA +2.59T +1.61UDC +1.04FLC 99R 4/20
 GTPI +2222G

Ernest-Anthony Astoria-ET

69175550 Excellent-94 EEEEE *TL
 4-05 2x 355d 34680 4.9 1694 3.1 1064
 2-10 2x 365d 28640 4.6 1316 3.1 897
 1-11 2x 274d 15550 4.6 710 3.0 464

Maternal sister to Astoria

Ernest-Anthony Acoustic-ET EX-95
Ernest-Anthony Accolade-ET EX-94
Ernest-Anthony Anastasia EX-92
Ernest-Anthony Aquarius EX-92
Ernest-Anthony Astonish-ET EX-91

Braedale Goldwyn

10705608C GP-CAN EXTRA'05 GM 12/11 *TV *TL
 PTA -756M -8F -14P 99R 4/20
 PTA +.97T +.53UDC +.83FLC GTPI +1848G

Ernest-Anthony Aphrodite-ET

134318321 Excellent-95 EEEEE 2E
 6-08 2x 365d 40370 4.0 1617 3.0 1207
 4-01 2x 340d 37960 5.8 2202 3.3 1269
 5-02 2x 365d 36790 4.1 1512 3.2 1179
 2-09 2x 338d 26760 4.0 1075 3.1 827
 Life: 1591d 154120 4.5 6972 3.2 4938
 • 2nd 4-Yr-Old Cow Eastern Fall/Nat 2007
 • 3rd Aged Cow North East Fall National 2009

3rd-5th Dams

Tri-Day Ashlyn-ET EX-96 2E GMD DOM
 4-09 2x 365d 43090 4.8 2079 3.5 1503
 Life: 1374d 144770 4.6 6665 3.5 5135
 • All-Time All-American 4-Yr-Old Cow
 • HHM All-Time All-American Sr 3-Yr-Old Cow
 • Voted All-World 2001 by Holstein International
 • All-American 4-Yr-Old Cow 2001
 • All Canadian 4-Yr-Old Cow 2001
 • Supreme Champion World Dairy Expo 2001
 • Grand Champion Royal Winter Fair 2001
 • All-American Sr 3-Yr-Old Cow 2000
 • Res All Canadian Sr 3-Yr-Old Cow 2000
Bendy-Brook Odyssey Favorite EX-92 2E DOM
 6-01 2x 337d 22670 3.4 770 3.1 706
 • Res All-American Produce of Dam 2001
Bendy-Brook Star Fonda VG-86 VG-MS
 3-11 2x 290d 23390 3.5 826 3.1 724



ARETHUSA AWESOME ASTRID VG-89
SAME FAMILY AS LOTS 14-17

14

ARETHUSA SID ASTRA-ET

840003126029547 Excellent-90 EEEVE
Born: January 11, 2014 • Herd No. 626
2-02 2x 365d 30289 4.0 1210 3.1 952
3-11 2x 365d 26965 3.5 1306 3.2 1188
5-03 2x 315d 36750 3.7 1366 3.1 1138
• Sells Dry
Due: May 30, 2020 to Val-Bisson Doorman-ET 200H006480

15

ARETHUSA CHILL AVERIE

840003210910879 99%RHA-I
Born: April 25, 2019 • Herd No. 824
Sire: **Crasdale Chill-ET 224H000004**
Dam: **Arethusa Sid Astra** (Lot 14)

Maternal sister to Averie

Arethusa Awesome Astrid VG-89

• 1st Jr 3-Yr-Old/HM Int Champ NE Spring Nat'l 2019

Braedale Goldwyn

10705608C GP-CAN EXTRA'05 GM 12/11 *TV *TL
PTA -756M -8F -14P 99R 4/20
PTA +.97T +.53UDC +.83FLC 99R GTPI +1848G

Ernest-Anthony Aphrodite-ET

134318321 Excellent-95 EEEEE 2E
6-08 2x 365d 40370 4.0 1617 3.0 1207
4-01 2x 340d 37960 5.8 2202 3.3 1269
5-02 2x 365d 36790 4.1 1512 3.2 1179
2-09 2x 338d 26760 4.0 1075 3.1 827
Life: 1591d 154120 4.5 6972 3.2 4938

• 2nd 4-Yr-Old Cow Eastern Fall/Nat 2007

• 3rd Aged Cow North East Fall National 2009

16

ARETHUSA SID AXIS-ET

840003141281723 Very Good-85 VG-MS @ 2-08
Born: January 19, 2017 • Herd No. 1723
2-01 2x 277d 15180 3.7 560 3.3 498
3-01 2x 17d 1253 4.0 50 3.4 43 RIP
Fresh: February 22, 2020
Milking: 91# 3.6F 3.0P SCC 71,000

17

ARETHUSA SOLOMON ADELINE

840003137803089 99%RHA-I
Born: March 1, 2019 • Herd No. 820
Sire: **Walnutlawn Solomon-ET 200H010146**
Dam: **Arethusa Sid Axis-ET** (Lot 16)

3rd-5th Dams

Tri-Day Ashlyn-ET EX-96 2E GMD DOM

4-09 2x 365d 43090 4.8 2079 3.5 1503

Life: 1374d 144770 4.6 6665 3.5 5135

- All-Time All-American 4-Yr-Old Cow
- HHM All-Time All-American Sr 3-Yr-Old Cow
- Voted All-World 2001 by Holstein International
- All-American 4-Yr-Old Cow 2001
- All Canadian 4-Yr-Old Cow 2001
- Supreme Champion World Dairy Expo 2001
- Grand Champion Royal Winter Fair 2001
- All-American Sr 3-Yr-Old Cow 2000
- Res All Canadian Sr 3-Yr-Old Cow 2000

Bendy-Brook Odyssey Favorite EX-92 2E DOM

6-01 2x 337d 22670 3.4 770 3.1 706

• Res All-American Produce of Dam 2001

Bendy-Brook Star Fonda VG-86 VG-MS

3-11 2x 290d 23390 3.5 826 3.1 724

Pine-Tree Sid-ET

62175895 *TR *TP *TY *TL
PTA -827M -18F -23P 99R 4/20
PTA -4.0PL 3.02SCS -5.0DPR 8.2%DCE
PTA +1.47T +.93UDC -.86FLC 99R 4/20
GTPI +1550G

Ernest-Anthony Astoria-ET

69175550 Excellent-94 EEEEE *TL
4-05 2x 355d 34680 4.9 1694 3.1 1064
2-10 2x 365d 28640 4.6 1316 3.1 897
1-11 2x 274d 15550 4.6 710 3.0 464

Maternal sisters to Astoria

Ernest-Anthony Acoustic-ET EX-95

Ernest-Anthony Accolade-ET EX-94

Ernest-Anthony Anastasia EX-92

Ernest-Anthony Aquarius EX-92

Ernest-Anthony Astonish-ET EX-91

ARETHUSA FARM



ARETHUSA SID ALTER-ET VG-85 VG-MS @ 2-01
DAM OF LOT 18

Full sisters to Aphrodite

- EO Siemers Ashlyns Angel-ET EX-96 EEEEE 2E**
2-04 2x 511d 42535 4.6 1991 3.3 1397
• *Res All-American Sr 2-Yr-Old Cow 2006*
- EK-Oseeana Ambrosia EX-95 EEEEE 2E**
6-04 2x 365d 44135 4.2 1852 3.2 1399
• *Reserve All-American 4-Year-Old 2007*
• *Member All-American Produce of Dam 2009*

3rd-7th Dams

- Ernest-Anthony Aphrodite-ET EX-95 2E**
6-08 2x 365d 40370 4.0 1617 3.0 1207
Life: 1591d 154120 4.5 6972 3.2 4938
• *2nd 4-Yr-Old Cow Eastern Fall/Nat 2007*
• *3rd Aged Cow North East Fall National 2009*
- Tri-Day Ashlyn-ET EX-96 2E GMD DOM**
4-09 2x 365d 43090 4.8 2079 3.5 1503
Life: 1374d 144770 4.6 6665 3.5 5135
• *All-Time All-American 4-Yr-Old Cow*
• *HHM All-Time All-American Sr 3-Yr-Old Cow*
• *Voted All-World 2001 by Holstein International*
• *All-American 4-Yr-Old Cow 2001*
• *All Canadian 4-Yr-Old Cow 2001*
• *Supreme Champion World Dairy Expo 2001*
• *Grand Champion Royal Winter Fair 2001*
• *All-American Sr 3-Yr-Old Cow 2000*
• *Res All Canadian Sr 3-Yr-Old Cow 2000*
- Bendy-Brook Odyssey Favorite EX-92 2E DOM**
6-01 2x 337d 22670 3.4 770 3.1 706
• *Res All-American Produce of Dam 2001*
- Bendy-Brook Star Fonda VG-86 VG-MS**
3-11 2x 290d 23390 3.5 826 3.1 724

18

ARETHUSA DIAMONDBACK ADINE

840003137803088 99%RHA-I
Born: January 28, 2019 • Herd No. 819

"Will be serviced by sale day"

Mr D Apple Diamondback

840003013721049 99%RHA-I EX-93 *RC *TP *TC *TV *TL
PTA -481M -27F -27P 99R 4/20
PTA -0.3PL 3.08SCS -2.3DPR 8.7%DCE
PTA +2.43T +2.01UDC +1.34FLC 99R 4/20
GTPI +1910G

Arethusa Sid Alter-ET

840003141281721 Very Good-85 VG-MS @ 2-01
2-00 2x 365d 18560 4.0 474 3.2 593

Pine-Tree Sid-ET

62175895 *TR *TP *TY *TL
PTA -827M -18F -23P 99R 4/20
PTA +1.47T +.93UDC -.86FLC GTPI +1550G

Ernest-Anthony Astoria-ET

69175550 Excellent-94 EEEEE *TL
4-05 2x 355d 34680 4.9 1694 3.1 1064
2-10 2x 365d 28640 4.6 1316 3.1 897
1-11 2x 274d 15550 4.6 710 3.0 464
• *HM Sr. Champion NY Spring Int'l 2014*

Maternal sister to Astoria

- Ernest-Anthony Acoustic-ET EX-95**
Ernest-Anthony Accolade-ET EX-94
Ernest-Anthony Anastasia EX-92
Ernest-Anthony Aquarius EX-92
Ernest-Anthony Astonish-ET EX-91

PEDIGREE & PRODUCTION SALE



ERNEST-ANTHONY APHRODITE-ET EX-95 EEEEE 2E
2ND DAM OF LOT 19



EK-OSEEANA AMBROSIA EX-95 EEEEE 2E
FULL SISTER TO 2ND DAM OF LOT 19



EO SIEMERS ASHLYNS ANGEL-ET EX-96 EEEEE 2E
FULL SISTER TO 2ND DAM OF LOT 19

19

Mr Atwood Brokaw-ET

140602463 Very Good-86 *TR *TP *TY *TV *TL
PTA -592M -1F -5P 99R 4/20
PTA -4.4PL 3.22SCS -2.0DPR 10.9%DCE
PTA +2.63T +1.51UDC +.68FLC 99R 4/20
GTPI +1871G

Ernest-Anthony Accolade-ET

69366806 Excellent-94 EEEEE 2E *TL
5-06 2x 347d 32820 4.8 1579 3.0 993
6-08 2x 365d 31280 5.4 1690 3.1 956
4-02 2x 331d 27630 6.1 1699 3.4 942
2-03 2x 353d 19860 4.5 894 3.2 633
Life: 1460d 114830 5.2 6023 3.2 3643

Maternal sister to Accolade

Ernest-Anthony Acoustic-ET EX-95
Ernest-Anthony Astoria-ET EX-94
Ernest-Anthony Anastasia EX-92
Ernest-Anthony Aquarius EX-92
Ernest-Anthony Astonish-ET EX-91

ARETHUSA BROKAW ANELLAH-ET

840003126029572 Excellent-93 EEEEE
Born: June 1, 2014 • Herd No. 651
5-00 2x 272d 28978 3.6 1056 3.3 942
4-01 2x 252d 25487 3.2 817 3.2 828
2-00 2x 334d 23012 3.8 875 3.3 769
3-01 2x 286d 18109 3.7 664 3.6 652
Fresh: June 12, 2019
Milking: 74# 3.9F 3.7P SCC 214,000

Due: December 15, 2020 to Mr Affection Analyst-Red-ET
7H015023

Braedale Goldwyn

10705608C GP-CAN EXTRA'05 GM 12/11 *TV *TL
PTA -756M -8F -14P 99R 4/20
PTA +.97T +.53UDC +.83FLC GTPI +1848G

Ernest-Anthony Aphrodite-ET

134318321 Excellent-95 EEEEE 2E
6-08 2x 365d 40370 4.0 1617 3.0 1207
4-01 2x 340d 37960 5.8 2202 3.3 1269
5-02 2x 365d 36790 4.1 1512 3.2 1179
2-09 2x 338d 26760 4.0 1075 3.1 827
Life: 1591d 154120 4.5 6972 3.2 4938

3rd-5th Dams

Tri-Day Ashlyn-ET EX-96 2E GMD DOM

4-09 2x 365d 43090 4.8 2079 3.5 1503
Life: 1374d 144770 4.6 6665 3.5 5135

- All-Time All-American 4-Yr-Old Cow
- HHM All-Time All-American Sr 3-Yr-Old Cow
- Voted All-World 2001 by Holstein International
- All-American 4-Yr-Old Cow 2001
- All Canadian 4-Yr-Old Cow 2001
- Supreme Champion World Dairy Expo 2001
- Grand Champion Royal Winter Fair 2001
- All-American Sr 3-Yr-Old Cow 2000
- Res All Canadian Sr 3-Yr-Old Cow 2000

Bendy-Brook Odyssey Favorite EX-92 2E DOM

6-01 2x 337d 22670 3.4 770 3.1 706

- Res All-American Produce of Dam 2001

Bendy-Brook Star Fonda VG-86 VG-MS

3-11 2x 290d 23390 3.5 826 3.1 724

ARETHUSA FARM



ERNEST ANTHONY ACOUSTIC EX-95 EEEEE 3E
DAM OF LOTS 20 & 21

20

ARETHUSA DOORMAN AMAZE

840003137803026 99%RHA-I VG-85 VG-MS @ 2-09

Born: December 2, 2016 • Herd No. 757

2-03 2x 320d 24191 3.6 872 3.1 756

• Sells Dry

Due: May 5, 2020 to Siemers Rozume-ET
799H000009

21

ARETHUSA CHILL ADIDAS

840003137803083 99%RHA-I

Born: December 10, 2018 • Herd No. 814

Bred: March 16, 2020 to Croteau Lesperron Unix
777H03919

*Full sister to Amaze & Maternal sister to Adidas
Arethusa Doorman Audible EX-91*

Val-Bisson Doorman-ET

107281711C Excellent-90-CAN *TR *TP *TY *TL

PTA -453M +14F +10P 99R 4/20

PTA +.3PL 2.66SCS -2.0DPR 8.3%DCE

PTA +2.59T +1.61UDC +1.04FLC 99R 4/20

GTPI +2222G

And

Crasdale Chill-ET

12260114C 99%RHA-I *TY *TV *TL

PTA -576M -15F -11P 80R 4/20

PTA +0.0PL 2.78SCS +0.2DPR 7.9%DCE

PTA +2.41T +1.94UDC +.72FLC 80R 4/20

GTPI +2063G

Ernest-Anthony Acoustic-ET

69366805 Excellent-95 EEEEE 3E

8-01 2x 341d 48350 3.8 1847 3.0 1443

6-00 2x 335d 44210 3.1 1387 2.9 1300

7-02 2x 248d 35060 3.2 1106 2.8 968

9-02 2x 299d 34590 4.0 1376 3.1 1064

5-02 2x 255d 27550 3.8 1050 3.0 817

4-02 2x 307d 26640 4.6 1215 3.3 866

3-02 2x 309d 23660 3.7 868 3.1 736

2-01 2x 315d 17180 3.5 608 3.1 534

Life: 2409d 257240 3.7 9457 3.0 7728

Maternal sister to Acoustic

Ernest-Anthony Astoria-ET EX-94

Ernest-Anthony Accolade-ET EX-94

Ernest-Anthony Anastasia EX-92

Ernest-Anthony Aquarius EX-92

Ernest-Anthony Astonish-ET EX-91

Braedale Goldwyn

10705608C GP-CAN EXTRA'05 GM 12/11 *TV *TL

PTA -756M -8F -14P 99R 4/20

PTA +.97T +.53UDC +.83FLC GTPI +1848G

Ernest-Anthony Aphrodite-ET

13431832I Excellent-95 EEEEE 2E

6-08 2x 365d 40370 4.0 1617 3.0 1207

4-01 2x 340d 37960 5.8 2202 3.3 1269

5-02 2x 365d 36790 4.1 1512 3.2 1179

2-09 2x 338d 26760 4.0 1075 3.1 827

Life: 1591d 154120 4.5 6972 3.2 4938

• 2nd 4-Yr-Old Cow Eastern Fall/Nat 2007

• 3rd Aged Cow North East Fall National 2009

3rd Dam

Tri-Day Ashlyn-ET EX-96 2E GMD DOM

4-09 2x 365d 43090 4.8 2079 3.5 1503

Life: 1374d 144770 4.6 6665 3.5 5135

• All-Time All-American 4-Yr-Old Cow

• HHM All-Time All-American Sr 3-Yr-Old Cow

• Voted All-World 2001 by Holstein International

• All-American 4-Yr-Old Cow 2001

• All Canadian 4-Yr-Old Cow 2001

• Supreme Champion World Dairy Expo 2001

• Grand Champion Royal Winter Fair 2001

• All-American Sr 3-Yr-Old Cow 2000

• Res All Canadian Sr 3-Yr-Old Cow 2000

4th Dam

Bendy-Brook Odyssey Favorite EX-92 2E DOM

6-01 2x 337d 22670 3.4 770 3.1 706

• Res All-American Produce of Dam 2001

5th Dam

Bendy-Brook Star Fonda VG-86 VG-MS

3-11 2x 290d 23390 3.5 826 3.1 724



ARETHUSA AFTER ALL-ET EX-92 EX-MS
MATERNAL SISTER TO DAM OF LOT 22

22

Regancrest-GV S Bradnick-ET

66625940 Excellent-96 EEEE *TR *TP *TY *TV *TL
 PTA +475M -45F -3P 99R 4/20
 PTA +1.2PL 3.19SCS -2.8DPR 6.2%DCE
 PTA +1.71T +1.79UDC +1.79FLC 99R 4/20
 GTPI +1849G

Arethusa Golden Affinity-ET

70687085 Very Good-87 EX-MS
 4-09 2x 365d 39880 3.6 1449 2.9 1166
 3-06 2x 365d 34080 4.7 1615 2.8 971
 2-05 2x 352d 26640 3.7 983 3.0 796
 Life: 1265d 108990 4.0 4403 2.9 3174

Maternal sister to Affinity

Arethusa Fever Almira-ET EX-94 EEEEE *TL *TD

- 1st Aged Cow/HM Sr Champ MD State Fair 2018
- Unanimous All-American Sr. 2-Yr-Old 2014
- 1st Sr. 2-Yr-Old Int'l Holstein Show 2014
- 1st Sr. 2-Yr-Old Eastern Fall National 2014
- Res. All-American Milking Yearling 2013
- 2nd Milking Yearling Int'l Holstein Show 2013
- 4th generation of All-American Winners

Arethusa After All-ET EX-92 EX-MS

4-02 2x 365d 32532 3.5 1116 2.9 940

ARETHUSA BRADNK ANNISTON-TW

840003126029626 Very Good-88 VG-MS
 Born: September 2, 2015 • Herd No. 705
 2-11 2x 348d 27828 3.7 1023 3.0 836
 1-11 2x 271d 22853 3.7 844 2.9 665
 4-04 2x 40d 5101 5.1 262 2.9 150 RIP
 Fresh: January 30, 2020
 Milking: 69# 2.9F 2.9P SCC 81,000
 Bred: March 26, 2020 to Croteau Lesperron Unix
 777H039013

Braedale Goldwyn

10705608C GP-CAN EXTRA'05 GM 12/11 *TV *TL
 PTA -756M -8F -14P 99R 4/20
 PTA +.97T +.53UDC +.83FLC GTPI +1848G

Arethusa Affection-ETS

139044997 Excellent-92 EX-MS
 2-10 2x 305d 27260 4.1 1120 2.9 783
 4-09 2x 310d 24830 4.6 1130 3.0 757
 5-10 2x 244d 22680 5.1 1168 2.9 656
 • All-American Milking Yearling 2009
 • 1st Sr Milking Yearling WDE 2009

3rd-6th Dams

EO Siemers Ashlyns Angel-ET EX-96 3E GMD

4-03 2x 365d 41370 4.2 1749 3.1 1277
 9-10 2x 365d 39800 6.0 2383 3.0 1177

- Res All-American Aged Cow 2010
- Res All-Canadian Mature Cow 2010
- Sr & Grand Champ Eastern National 2010
- Sup Champion PA All-American 2010
- Res All-American Sr 2-Yr-Old 2006
- Un All-American Winter Yearling 2005

Tri-Day Ashlyn-ET EX-96 EEEEE 2E GMD DOM 6*

4-09 2x 365d 43090 4.8 2079 3.5 1503
 Life: 1374d 144770 4.6 6665 3.5 5135

- All-American 4-Year-Old 2001
- All Canadian 4-Year-Old 2001
- Supreme Champion, World Dairy Expo 2001

Bendy-Brook Odyssey Favorite EX-92 2E DOM

6-01 2x 337d 22670 3.4 770 3.1 706

- Res All-American Produce of Dam 2001
- Nom Jr All-American Aged Cow 1995

Bendy-Brook Star Fonda VG-86 VG-MS

3-11 2x 290d 23390 3.5 826 3.1 724
 5-09 2x 312d 22340 3.3 734 3.0 680

ARETHUSA FARM



ERNEST ANTHONY ABIGAIL-ET EX-91 EX-MS 3E
3RD DAM OF LOT 23 & 4TH DAM OF LOT 24

23

ARETHUSA HEZTRY AESTHETIC

840003126029638 Excellent-90 EX-MS @ 3-04
Born: October 25, 2015 • Herd No. 717
3-01 2x 267d 27885 3.6 1010 3.2 891
1-10 2x 365d 26582 4.1 1077 3.2 852
3-11 2x 144d 14604 3.6 531 3.3 487 RIP
Fresh: October 18, 2019
Milking: 100# 4.2F 3.3P SCC 87,000

Due: September 22, 2020 to Riverdown Unstopabull-Red
799H04

St-Jacob Destry Heztry-ET

70074442 Excellent-91 *RC *CD *TY *TV *TL
PTA -748M -25F -8P 99R 4/20
PTA -0.4PL 3.09SCS +0.7DPR 9.0%DCE
PTA +1.12T +.65UDC +0.73FLC 98R 4/20
GTPI +1878G

Ernest-Anthony GS Abby

72279455 Excellent-94 EX-MS
3-02 2x 365d 45370 3.9 1772 2.9 1322
4-08 2x 241d 33680 3.8 1288 2.8 943
2-00 2x 305d 22760 4.0 921 3.1 705
Life: 1082d 115830 4.1 4731 3.0 3469

Toc-Farm Goldsun-ET

53990032335
PTA -1393M -62F -33P 99R 4/20
PTA +1.12T +1.15UDC -.66FLC GTPI +1416G

Ernest-Anthony Abigail-ET

68806234 Excellent-91 3E
7-05 2x 365d 44490 4.1 1809 2.9 1286
6-02 2x 365d 39530 3.9 1556 3.1 1217
4-07 2x 365d 34790 4.4 1543 2.8 991
3-02 2x 317d 23860 3.7 877 2.9 692
Life: 2160d 197230 4.3 8435 3.0 6012

24

ARETHUSA UNIX ASTONISH

840003137803084
Born: December 16, 2018 • Herd No. 815
Sire: **Croteau Lesperron Unix-ET**
Dam: **Arethusa Heztry Aesthetic** (Sells as Lot 23)

"Will be serviced by sale day"

3rd-6th Dams

EK-Oseeana Ambrosia-ET EX-95 3E GMD

6-04 2x 365d 44140 4.2 1852 3.2 1399
Life: 1855d 177700 4.7 8269 3.2 5761

- Reserve All-American 4-Year-Old 2007
- Member All-American Produce of Dam 2009

Tri-Day Ashlyn-ET EX-96 EEEEE 2E GMD DOM 6*

4-09 2x 365d 43090 4.8 2079 3.5 1503
Life: 1374d 144770 4.6 6665 3.5 5135

- All-American 4-Year-Old 2001

- All Canadian 4-Year-Old 2001

- Supreme Champion, World Dairy Expo 2001

Bendy-Brook Odyssey Favorite EX-92 2E DOM

6-01 2x 337d 22670 3.4 770 3.1 706

- Res All-American Produce of Dam 2001

- Nom Jr All-American Aged Cow 1995

Bendy-Brook Star Fonda VG-86 VG-MS

3-11 2x 290d 23390 3.5 826 3.1 724
5-09 2x 312d 22340 3.3 734 3.0 680

PEDIGREE & PRODUCTION SALE



ARETHUSA WIND AVOCADO-ET EX-95 EEEEE 2E
DAM OF LOT 25 & 2ND DAM OF LOT 26

25

ARETHUSA ABSOLUTE AWAKENING

840003126029616 Excellent-90 EX-MS *RC
Born: March 26, 2015 • Herd No. 695
3-07 2x 346d 32290 4.5 1459 3.5 1132
2-02 2x 365d 27080 4.5 1225 3.5 954
4-08 2x 97d 6821 5.8 394 3.0 202 RIP
Fresh: December 4, 2019
Milking: 52# 5.8F 4.2P SCC 54,000

Due: December 15, 2020 to Mr Affection Analyst-Red-ET
7H015023

Apples Absolute-Red-ET

139358472 Excellent-94 *CV *TC *TY *TL
PTA -2024M -17F -27P 99R 4/20
PTA -6.1PL 3.53SCS -5.1DPR 13.8%DCE
PTA +2.14T +2.62UDC +1.57FLC 99R 4/20
GTPI +1531G

Arethusa Wind Avocado-ET

71471970 Excellent-95 EEEEE 2E
7-00 2x 365d 43910 3.6 1561 3.0 1318
5-04 2x 365d 42250 4.0 1683 3.0 1266
3-06 2x 365d 37920 3.7 1416 3.3 1233
2-02 2x 357d 23070 4.3 1002 3.0 698
Life: 1832d 184150 3.8 7029 3.1 5751

- 3rd 150,000lb Cow Mid-West Spring Nat'l 2019
- 1st 5-Yr-Old/Sr Champ & Res Grand Champ District 5 Show 2017
- 3rd 5-Yr-Old Midwest Fall National 2017
- 5th Sr. 2-Yr-Old Northeast Fall National 2014

26

ARETHUSA UNSTOPBL AWAKENING

840003210910903 99%RHA-1 *RC
Born: December 4, 2019 • Herd No. 848
Sire: Riverdown Unstoppabull-Red 799H000004
Dam: Arethusa Absolute Awakening (Sells as Lot 25)

3rd Dam

EK-Oseeana Ambrosia-ET EX-95 EEEEE 3E GMD

6-04 2x 365d 44140 4.2 1852 3.2 1399
Life: 1855d 177700 4.7 8269 3.2 5761

- Reserve All-American 4-Yr-Old 2007
- Member All-American Produce of Dam 2009

4th Dam

Tri-Day Ashlyn-ET EX-96 EEEEE 2E GMD DOM

4-09 2x 365d 43090 4.8 2079 3.5 1503
Life: 1374d 144770 4.6 6665 3.5 5135

5th Dam

Bendy-Brook Odyssey Favorite EX-92 2E DOM

6-01 2x 337d 22670 3.4 770 3.1 706
4-11 2x 317d 21410 3.4 721 3.1 658

6th Dam

Bendy-Brook Star Fonda VG-86 VG-MS

3-11 2x 290d 23390 3.5 826 3.1 724
5-09 2x 312d 22340 3.3 734 3.0 680

Gillette Windbrook-ETS

7816429C Excellent-97-CAN *CD *TY *TV *TL
PTA -113M +16F +3P 99R 4/20
PTA +1.54T +0.63UDC +1.57FLC GTPI +1953G

Ernest-Anthony Amanda-ET

137598799 Very Good-88 EEEVV 2-11 *TV
2-07 2x 365d 32220 3.7 1178 3.2 1046
4-00 2x 329d 31780 4.6 1466 2.9 914

ARETHUSA FARM



ERNEST-ANTHONY APHRODITE-ET EX-95 EEEEE 2E
4TH DAM OF LOT 27



ARETHUSA ARCHRIVAL ALICIA VG-85 VG-MS
DAM OF LOT 28

27

ARETHUSA KINGBOY AMELIA

840003137803061 99%RHA-I
Born: April 15, 2018 • Herd No. 792
1-09 2x 30d 1652 3.9 65 3.1 51 RIP
Fresh: February 9, 2020
Milking: 74# 4.0F 2.8P SCC 27,000

Morningview Mcc Kingboy-ET

72044077 99%RHA-I EX-92 *TR *TP *TC *TY *TV *TL
PTA +887M +26F +25P 99R 4/20
PTA -0.5PL 2.80SCS +.8DPR 6.6%DCE
PTA +2.10T +1.53UDC +.45FLC 99R 4/20
GTPI +2395G

Arethusa Archrival Amy

840003137802996 Good Plus-82 @ 2-04
2-01 2x 312d 16241 4.8 772 3.1 509

Eclipse Atwoods Archrival-ET

1786521
PTA -786M -13F -28P 99R 4/20
PTA +2.75T +1.79UDC +1.16FLC GTPI +1692G

Arethusa Windbrook Abana-ET

2-03 2x 365d 29200 4.9 1424 3.1 905

3rd Dam

Ernest-Anthony Accolade-ET EX-94 EEEEE 2E
5-06 2x 347d 32820 4.8 1579 3.0 993
Life: 1460d 114830 5.2 6023 3.2 3643

4th Dam

Ernest-Anthony Aphrodite-ET EX-95 EEEEE 2E
6-08 2x 365d 40370 4.0 1617 3.0 1207
Life: 1591d 154120 4.5 6972 3.2 4938
• 2nd 4-Yr-Old Cow Eastern Fall/Nat 2007
• 3rd Aged Cow North East Fall National 2009

5th Dam

Tri-Day Ashlyn-ET EX-96 2E GMD DOM
4-09 2x 365d 43090 4.8 2079 3.5 1503
Life: 1374d 144770 4.6 6665 3.5 5135
• All-Time All-American 4-Yr-Old Cow
• HHM All-Time All-American Sr 3-Yr-Old Cow
• Voted All-World 2001 by Holstein International
• All-American 4-Yr-Old Cow 2001
• All Canadian 4-Yr-Old Cow 2001
• Supreme Champion World Dairy Expo 2001
• Grand Champion Royal Winter Fair 2001
• All-American Sr 3-Yr-Old Cow 2000
• Res All Canadian Sr 3-Yr-Old Cow 2000

6th Dam

Bendy-Brook Odyssey Favorite EX-92 2E DOM
6-01 2x 337d 22670 3.4 770 3.1 706
• Res All-American Produce of Dam 2001

7th Dam

Bendy-Brook Star Fonda VG-86 VG-MS
3-11 2x 290d 23390 3.5 826 3.1 724

PEDIGREE & PRODUCTION SALE

28

ARETHUSA AUSTIN ALMITA

840003137803063 99%RHA-I
Born: June 1, 2018 • Herd No. 794

Due: June 10, 2020 to Avant-Garde Subban-ET
250H014503

Arethusa Doorman Austin-ET

840003141281726 99%RHA-I *R *TL
PTA -409M +2F -10P 81R 12/19
PTA -.5PL 3.00SCS -1.5DPR 5.8%DCE
PTA +2.49T +.97UDC +1.39FLC 80R 12/19
GTPI +1661G

Arethusa Archrival Alicia

840003126029642 Very Good-85 VG-MS
2-05 2x 333d 17485 4.7 819 3.4 599
3-06 2x 223d 18495 4.2 778 3.3 608 RIP

2nd-7th Dams

Arethusa Goldwyn Annabelle EX-92 EX-MS 2E

4-07 2x 305d 29470 6.1 1808 3.1 913
3-06 2x 333d 29370 4.6 1346 3.2 926

Arethusa Aspen Arabella EX-94 EX-MS 3E

3-03 2x 352d 31800 4.9 1572 3.2 1024
Life: 1562d 119210 4.3 5136 3.3 3956

Ernest-Anthony Ariel-ET EX-94 2E EEEEE

6-02 2x 365d 44060 4.6 2022 3.2 1429
Life: 1588d 150310 4.2 6326 3.1 4617

C Woodruff Kerr Amy EX-95 3E EEEEE GMD

6-09 2x 305d 39890 3.8 1530 3.6 1417
Life: 2387d 213525 4.3 9077 3.4 7209

• *Nom. All-American Aged Cow 2001*

• *2nd 125,000 lb Cow Int'l Holstein Show 2001*

Woodruff Wil Anne VG-85-CAN

4-01 2x 365d 24063 3.8 924 2.9 699
Life: 8 Lact 146356 4.0 5841 3.1 4470

29

ARETHUSA DANIEL AUBREY

840003137803081
Born: November 4, 2018 • Herd No. 812

Due: December 6, 2020 to Mr Affection Analyst-Red-ET
7H015023

She-Ken Uno Daniel

72713018 *RC *TC *TY *TV *TL
PTA -693M +2F -6P 97R 4/20
PTA -0.1PL 3.16SCS -.7DPR 9.9%DCE
PTA +2.03T +2.98UDC +.87FLC 95R 4/20
GTPI +2113G

Arethusa Sid Amber

840003126029595 Very Good-87 EX-MS
4-01 2x 365d 42467 4.5 1897 3.2 1372
2-11 2x 351d 33289 3.9 1310 3.4 1136
1-10 2x 296d 22131 5.4 1187 3.3 723

2nd-7th Dams

Arethusa Goldwyn Ariana-ET EX-91 EX-MS

4-11 2x 278d 28320 3.7 1035 3.4 950
Life: 1189d 101610 4.1 4138 3.3 3346

Arethusa Allen Arianna-ET EX-93 EX-MS

4-09 2x 305d 39170 3.1 1218 2.9 1130
Life: 103110 3.5 3566 3.1 3219

Ernest-Anthony Ariel-ET EX-94 2E EEEEE

6-02 2x 365d 44060 4.6 2022 3.2 1429
Life: 1588d 150310 4.2 6326 3.1 4617

C Woodruff Kerr Amy EX-95 3E EEEEE GMD

6-09 2x 305d 39890 3.8 1530 3.6 1417
Life: 2387d 213525 4.3 9077 3.4 7209

• *Nom. All-American Aged Cow 2001*

• *2nd 125,000 lb Cow Int'l Holstein Show 2001*

Woodruff Wil Anne VG-85-CAN

4-01 2x 365d 24063 3.8 924 2.9 699
Life: 8 Lact 146356 4.0 5841 3.1 4470

30

ARETHUSA REDBURST AMARA

840003126029634 Very Good-85 *RC
Born: October 1, 2015 • Herd No. 713
2-10 2x 365d 34128 3.8 1299 3.2 1083
1-11 2x 278d 26983 3.9 1045 3.1 841
4-01 2x 108d 10785 3.7 402 3.0 322 RIP
Fresh: November 23, 2019
Milking: 91# 3.9F 3.0P SCC 22,000
Bred: April 7, 2020 to Avant-Garde Unix Select-ET
7H014920

Lookout P Redburst-Red-ET

106030980C *TV *TL *TY *TD
PTA -277M -13F +0P 99R 4/20
PTA +0.9PL 3.12SCS +3.8DPR 10.6%DCE
PTA +1.39T +1.35UDC +.94FLC 99R 4/20
GTPI +2153G

Arethusa Alexander Alva

72869732 Very Good-85 VG-MS
4-09 2x 305d 29610 4.0 1183 2.6 782
2-06 2x 203d 18240 3.8 687 2.8 517

2nd-6th Dams

Arethusa Goldwyn Aroma-ET VG-85 VG-MS

3-00 2x 300d 26330 3.4 908 3.0 797

Arethusa Allen Arianna-ET EX-93 EX-MS

4-09 2x 305d 39170 3.1 1218 2.9 1130
Life: 103110 3.5 3566 3.1 3219

Ernest-Anthony Ariel-ET EX-94 2E EEEEE

6-02 2x 365d 44060 4.6 2022 3.2 1429
Life: 1588d 150310 4.2 6326 3.1 4617

C Woodruff Kerr Amy EX-95 3E EEEEE GMD

6-09 2x 305d 39890 3.8 1530 3.6 1417
Life: 2387d 213525 4.3 9077 3.4 7209

• *Nom. All-American Aged Cow 2001*

• *2nd 125,000 lb Cow Int'l Holstein Show 2001*

Woodruff Wil Anne VG-85-CAN

4-01 2x 365d 24063 3.8 924 2.9 699
Life: 8 Lact 146356 4.0 5841 3.1 4470

ARETHUSA FARM

31

ARETHUSA CAPTURE ALORA

840003137803054 99%RHA-I
 Born: January 27, 2018 • Herd No. 785
 1-11 2x 60d 4239 4.6 197 3.2 136 RIP
 Fresh: January 10, 2020
 Milking: 96# 4.6F 3.1P SCC 23,000

Bred: April 9, 2020 to Riverdown Unstopabull-Red
 799H000004



ARETHUSA PERSEUS ALANA-ET EX-90
 FULL SISTER TO DAM OF LOT 31 & 32

Blondin Zimmer Capture-ET

109506266C 99%RHA-I *TY *TV *TL
 PTA -809M -14F -19P 80R 4/20
 PTA +0.5PL 2.71SCS +1.4DPR 8.0%DCE
 PTA +2.40T +2.29UDC +1.03FLC 83R 4/20
 GTPI +2098G

Arethusa Perseus Aldora-ET

840003126029565 Very Good-85 VG-MS *RC
 2-06 2x 365d 27058 5.6 1517 3.5 942
 4-09 2x 365d 23852 4.7 1112 3.5 833
 3-10 2x 268d 23516 4.6 1070 3.4 797
 Full sister to Aldora

Arethusa Perseus Alana-ET EX-90

Rainyridge Perseus

9808506C *RC *TY *TL
 PTA -1340M -6F -36P 98R 4/20
 PTA +.84T +.41UDC -.77FLC GTPI +1467G

Ernest-Anthony Allure-ET

69402283 Excellent-92 EX-MS
 3-08 2x 365d 35860 4.1 1462 3.2 1137
 2-04 2x 324d 21050 5.9 1233 3.0 621



ERNEST-ANTHONY ALLURE-ET EX-92 EX-MS
 2ND DAM OF LOT 31 & 32

32

ARETHUSA BOSTON ACCENT

840003137803009 Good Plus-81 @ 2-09
 Born: May 2, 2016 • Herd No. 740
 2-02 2x 292d 14115 4.5 631 3.5 490
 3-07 2x 83d 9037 4.3 393 3.1 283 RIP
 Fresh: December 18, 2019
 Milking: 87# 3.5F 3.2P SCC 152,000

Bred: April 2, 2020 to Blondin Zimmer Capture
 224H04507

Arethusa Boston-Red

73724487 *TL
 PTA -1079M -29F -14P 81R 4/20
 PTA +0.1PL 3.06SCS +1.2DPR 10.4%DCE
 PTA +1.71T +1.44UDC +1.14FLC 80R 4/20
 GTPI +1925G

Arethusa Perseus Alliyah-ET

840003126029558 Very Good-85 VG-MS *TL

Full sister to Aldora

Arethusa Perseus Alana-ET EX-90

Rainyridge Perseus

9808506C *RC *TY *TL
 PTA -1340M -6F -36P 98R 4/20
 PTA +.84T +.41UDC -.77FLC GTPI +1467G

Ernest-Anthony Allure-ET

69402283 Excellent-92 EX-MS
 3-08 2x 365d 35860 4.1 1462 3.2 1137
 2-04 2x 324d 21050 5.9 1233 3.0 621

3rd-11th Dam

Rotesown Durham Atara EX-94 EEEEE 2E

3-08 2x 365d 41210 4.0 1664 3.0 1253
 Life: 1627d 141550 4.0 5665 3.0 4310

Rotesown Encore Attie VG-85

2-05 2x 362d 28480 3.7 1067 2.9 838

Rotesown Jolt Athleen VG-86

2-11 2x 295d 22260 3.7 818 3.0 668

Rotesown Insp Athens VG-86 VG-MS

5-01 2x 365d 43550 3.3 1433 2.7 1159
 Life: 182010 3.4 6129 2.8 5130

Rotesown Bova Amy EX-94 4E GMD DOM

7-00 2x 365d 37180 2.9 1085 2.6 961
 Life: 241360 2.9 6996 2.6 6338

Future-Manor Ivan Molly Marizan VG-87

8-00 2x 365d 24690 3.0 3372 3.2 2565

Future-Manor Matt Milly Molly VG-85

5-01 2x 365d 17070 3.8 651

Future-Manor High Lucky Milly VG-88

5-04 2x 365d 25810 3.3 858

Life: 188360 3.3 6290

Iv-Lo Texal Centurion Lucky VG-85

Life: 155970 3.1 4875



ERNEST-ANTHONY ALEX ASIA-ET EX-90 EX-MS
DAM OF LOT 33

33

ARETHUSA GOLDSUN ASHIA

73450831 Excellent-94 EEEEE
Born: October 22, 2013 • Herd No. 617
4-00 2x 365d 50810 3.2 1612 2.8 1435
5-07 2x 281d 41912 3.1 1303 2.8 1162
1-10 2x 310d 25480 3.3 830 3.0 755
2-10 2x 319d 20970 3.8 788 2.8 591
Fresh: June 3, 2019
Milking: 98# 3.9F 3.1P SCC 38,000
Due: September 3, 2020 to Walnutlawn Solomon-ET
200H010146

Toc-Farm Goldsun-ET

53990032335
PTA -1393M -62F -33P 99R 4/20
PTA -1.7PL 2.92SCS -3.3DPR 9.3%DCE
PTA +1.12T +1.15UDC -.66FLC 99R 4/20
GTPI +1416G

Ernest-Anthony Alex Asia-ET

69402284 Excellent-90 EX-MS
2-11 2x 354d 34090 3.9 1336 2.7 916
1-10 2x 314d 20180 4.0 804 2.8 556

Golden-Oaks St Alexander-ET

61133837 Excellent-94 *TR *TY *TV *TL
PTA -252M +31F -14P 99R 4/20
PTA +.11T -.51UDC +.71FLC GTPI +1714G

Rotesown Durham Atara

133678251 Excellent-94 EEEEE 2E
3-08 2x 365d 41210 4.0 1664 3.0 1253
5-07 2x 365d 36450 3.9 1408 3.1 1115
2-07 2x 341d 25700 3.5 908 2.8 713
7-11 2x 332d 23550 3.8 895 2.9 690
Life: 1627d 141550 4.0 5665 3.0 4310

3rd-10th Dams

Rotesown Encore Attie VG-85
2-05 2x 362d 28480 3.7 1067 2.9 838
Rotesown Jolt Athleen VG-86
2-11 2x 295d 22260 3.7 818 3.0 668
Rotesown Insp Athens VG-86 VG-MS
5-01 2x 365d 43550 3.3 1433 2.7 1159
Life: 182010 3.4 6129 2.8 5130
Rotesown Bova Amy EX-94 4E GMD DOM
7-00 2x 365d 37180 2.9 1085 2.6 961
Life: 241360 2.9 6996 2.6 6338
Future-Manor Ivan Molly Marizan VG-87
8-00 2x 365d 24690 3.0 3372 3.2 2565
Future-Manor Matt Milly Molly VG-85
5-01 2x 365d 17070 3.8 651
Future-Manor High Lucky Milly VG-88
5-04 2x 365d 25810 3.3 858
Life: 188360 3.3 6290
Iv-Lo Texal Centurion Lucky VG-85
Life: 155970 3.1 4875

ARETHUSA FARM



CROVALLEY KNOWLEDGE AKIKA EX-94 EEEEE
DAM OF LOTS 34-36

34

ARETHUSA BRADY AMARYLLIS-ET

840003137803021 Very Good-87 VG-MS
Born: September 1, 2016 • Herd No. 752
1-11 2x 318d 17300 4.6 788 3.3 577
3-01 2x 161d 11945 3.9 469 3.2 379 RIP
Fresh: October 1, 2019
Milking: 80# 4.1F 3.2P SCC 25,000

Due: September 24, 2020 Val-Bisson Doorman
200H006480

Maternal sisters to Amaryllis
Crovalley Gold Akitkat EX-91-CAN
Arethusa GChip Aneko VG-88

Butz-Butler Atwood Brady-ET

140610404 Excellent-93 *TC *TY *TV *TL
PTA -692M -50F -46P 99R 4/20
PTA -.21PL 2.84SCS -4.3DPR 10.7%DCE
PTA +2.25T +1.95UDC +.64FLC 98R 4/20
GTPI +1472G

Crovalley Knowledge Akika

10946603C Excellent-94 EEEEE
5-05 2x 342d 34200 4.2 1428 2.1 1049
3-07 2x 365d 32470 4.9 1606 3.2 1029
Life: 1204d 101490 4.7 4756 3.3 3357
• 1st Sr 3-Yr-Old ON Summer Show 2014
• Nom. All-Canadian Sr 2-Yr-Old 2013
• HM All-Canadian Sr Yrlg 2012

Sicy Knowledge-ET

102459760C Very Good-87 *TY *TV
PTA -195M +23F +6P 99R 12/19
PTA +1.14T +1.23UDC +.46FLC GTPI +1551G

Crovalley Gibson Almond

7556011C Excellent-90-CAN 2E
4-05 2x 365d 28309 4.4 1252 3.6 1027
5-11 2x 365d 26208 4.4 1153 3.5 911
3-05 2x 332d 22299 4.6 1036 3.6 793
Life: 4 Lact 100336 4.5 4533 3.7 3695

3rd-6th Dams

Crovalley Milan Angel VG-85-CAN 2*

11-2 2x 352d 21733 4.6 1003 3.6 791
Life: 9 Lact 151143 4.1 6265 3.4 5126

Crovalley Star Angel VG-87-CAN 5*

5-09 2x 365d 24222 4.3 1047 3.5 842
Life: 8 Lact 148888 4.2 6215 3.3 4978

Crovalley Dynamic Ann EX-CAN 5E 6*

8-03 2x 329d 17463 4.4 769 3.4 597
Life: 7 Lact 108841 4.3 4683 3.4 3668

• Res Jr Champ Lindsay 1988

• Res Jr Champ Peterborough 1988

• 1st Spring Calf East-Central Champ 1988

Crovalley Jetstar April VG-86-CAN

4-04 2x 358d 21305 4.1 873 3.4 721
Life: 7 Lact 115497 4.0 4656 3.4 3951

35

ARETHUSA SOLOMON AYO-ET

840003137803045 99%RHA-I
 Born: September 7, 2017 • Herd No. 776
 1-09 2x 224d 12290 3.8 466 3.1 383
 • Sells Dry

Due: June 13, 2020 to Bredland Denver
 94HO18518

Maternal sisters to Ayo

Crovalley Gold Akitkat EX-91-CAN
Arethusa GChip Aneko VG-88
Arethusa Brady Amaryllis-ET VG-87

Walnutlawn Solomon-ET

11775998C 99%RHA-I *TR *TP *TY *TV *TL
 PTA -425M -16F -7P 99R 4/20
 PTA -1.7PL 2.88SCS +.2DPR 8.1%DCE
 PTA +2.71T +1.71UDC +.58FLC 98R 4/20
 GTPI +1988G

Crovalley Knowledge Akika

10946603C Excellent-94 EEEEE
 5-05 2x 342d 34200 4.2 1428 2.1 1049
 3-07 2x 365d 32470 4.9 1606 3.2 1029
 Life: 1204d 101490 4.7 4756 3.3 3357
 • *1st Sr 3-Yr-Old ON Summer Show 2014*
 • *Nom. All-Canadian Sr 2-Yr-Old 2013*
 • *HM All-Canadian Sr Yrlg 2012*

Sicy Knowledge-ET

102459760C Very Good-87 *TY *TV
 PTA -195M +23F +6P 99R 12/19
 PTA +1.14T +1.23UDC +.46FLC GTPI +1551G

Crovalley Gibson Almond

7556011C Excellent-90-CAN 2E
 4-05 2x 365d 28309 4.4 1252 3.6 1027
 5-11 2x 365d 26208 4.4 1153 3.5 911
 3-05 2x 332d 22299 4.6 1036 3.6 793
 Life: 4 Lact 100336 4.5 4533 3.7 3695

3rd-6th Dams

Crovalley Milan Angel VG-85-CAN 2*
 11-2 2x 352d 21733 4.6 1003 3.6 791
 Life: 9 Lact 151143 4.1 6265 3.4 5126
Crovalley Star Angel VG-87-CAN 5*
 5-09 2x 365d 24222 4.3 1047 3.5 842
 Life: 8 Lact 148888 4.2 6215 3.3 4978
Crovalley Dynamic Ann EX-CAN 5E 6*
 8-03 2x 329d 17463 4.4 769 3.4 597
 Life: 7 Lact 108841 4.3 4683 3.4 3668
 • *Res Jr Champ Lindsay 1988*
 • *Res Jr Champ Peterborough 1988*
 • *1st Spring Calf East-Central Champ 1988*
Crovalley Jetstar April VG-86-CAN
 4-04 2x 358d 21305 4.1 873 3.4 721
 Life: 7 Lact 115497 4.0 4656 3.4 3951

36

ARETHUSA SOLOMON AVOCADO-ET

840003200653185 99%RHA-I
 Born: December 1, 2018 • Herd No. 213

Due: December 2, 2020 to Mr Affection Analyst-Red-ET
 7HO15023

Maternal sisters to Avocado

Crovalley Gold Akitkat EX-91-CAN
Arethusa GChip Aneko VG-88
Arethusa Brady Amaryllis-ET VG-87

Walnutlawn Solomon-ET

11775998C 99%RHA-I *TR *TP *TY *TV *TL
 PTA -425M -16F -7P 99R 4/20
 PTA -1.7PL 2.88SCS +.2DPR 8.1%DCE
 PTA +2.71T +1.71UDC +.58FLC 98R 4/20
 GTPI +1988G

Crovalley Knowledge Akika

10946603C Excellent-94 EEEEE
 5-05 2x 342d 34200 4.2 1428 2.1 1049
 3-07 2x 365d 32470 4.9 1606 3.2 1029
 Life: 1204d 101490 4.7 4756 3.3 3357
 • *1st Sr 3-Yr-Old ON Summer Show 2014*
 • *Nom. All-Canadian Sr 2-Yr-Old 2013*
 • *HM All-Canadian Sr Yrlg 2012*

Sicy Knowledge-ET

102459760C Very Good-87 *TY *TV
 PTA -195M +23F +6P 99R 12/19
 PTA +1.14T +1.23UDC +.46FLC GTPI +1551G

Crovalley Gibson Almond

7556011C Excellent-90-CAN 2E
 4-05 2x 365d 28309 4.4 1252 3.6 1027
 5-11 2x 365d 26208 4.4 1153 3.5 911
 3-05 2x 332d 22299 4.6 1036 3.6 793
 Life: 4 Lact 100336 4.5 4533 3.7 3695

3rd-6th Dams

Crovalley Milan Angel VG-85-CAN 2*
 11-2 2x 352d 21733 4.6 1003 3.6 791
 Life: 9 Lact 151143 4.1 6265 3.4 5126
Crovalley Star Angel VG-87-CAN 5*
 5-09 2x 365d 24222 4.3 1047 3.5 842
 Life: 8 Lact 148888 4.2 6215 3.3 4978
Crovalley Dynamic Ann EX-CAN 5E 6*
 8-03 2x 329d 17463 4.4 769 3.4 597
 Life: 7 Lact 108841 4.3 4683 3.4 3668
 • *Res Jr Champ Lindsay 1988*
 • *Res Jr Champ Peterborough 1988*
 • *1st Spring Calf East-Central Champ 1988*
Crovalley Jetstar April VG-86-CAN
 4-04 2x 358d 21305 4.1 873 3.4 721
 Life: 7 Lact 115497 4.0 4656 3.4 3951

ARETHUSA FARM



EK-STJ GOLDWYN BELLA-ET EX-93 EEEEE
DAM OF LOT 37



RAINYRIDGE TALENT BARBARA EX-95 96-MS EEEEE
2ND DAM OF LOT 37

37

ARETHUSA BRADNICK BROOKE

840003126029600 Very Good-88 EX-MS
Born: December 1, 2014 • Herd No. 679
3-03 2x 365d 37199 3.3 1219 3.3 1210
4-08 2x 254d 22497 3.5 789 3.2 723 RIP
2-04 2x 272d 17524 3.5 610 3.4 603
Fresh: August 8, 2019
Milking: 68# 3.4F 3.5P SCC 66,000

Due: July 15, 2020 to Blondin Last Night
799H000010

Regancrest-GV S Bradnick-ET

66625940 Excellent-96 EEEE *TR *TP *TY *TV *TL
PTA +475M -45F -3P 99R 4/20
PTA +1.2PL 3.19SCS -2.8DPR 6.2%DCE
PTA +1.71T +1.79UDC +1.79FLC 99R 4/20
GTPI +1849G

EK-STJ Goldwyn Bella-ET

71311488 Excellent-93 EEEEE
4-04 2x 365d 48310 4.2 2020 3.4 1633
3-02 2x 365d 36430 3.7 1353 3.4 1245
1-11 2x 365d 26840 4.0 1075 3.3 898
Life: 1247d 125660 4.1 5147 3.4 4327

Braedale Goldwyn

10705608C GP-CAN EXTRA'05 GM 12/11 *TV *TL
PTA -756M -8F -14P 99R 4/20
PTA +.97T +.53UDC +.83FLC GTPI +1848G

Rainyridge Talent Barbara

7543170C Excellent-95 96-MS EEEEE *RC
3-04 2x 365d 34465 3.6 1257 3.3 1133
5-00 2x 305d 28650 3.8 1098 3.0 871
2-05 2x 298d 24720 4.1 1023 3.0 742
Life: 1266d 104815 3.9 4064 3.1 3259
• HM All-American Aged Cow 2011

- Res Grand Champ, NY Sprg/Internat'l 2011
- Unanimous All-American 5-Year-Old 2010
- Unanimous All-Canadian 5-Year-Old 2010
- Nom All-American Junior 3-Year-Old 2008
- Nom All-Canadian Jr 3-Yr-Old Cow 2008
- Sold for a record of \$210,000 at Kueffner Sale

3rd-5th Dams

RF Outside Breeze-ET EX-95 EEEEE 2E

5-03 2x 365d 37607 4.3 1623 3.3 1237
Life: 1896d 165379 4.6 7560 3.4 5659

- Grand Champion Southern Spring Show 2011

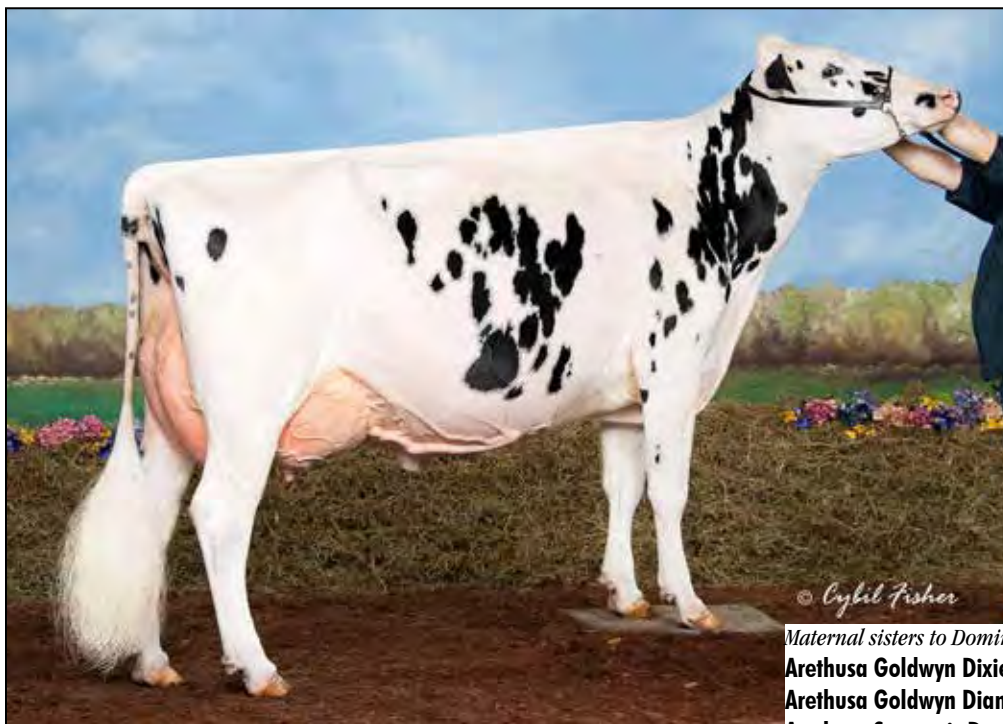
Rayverley Briana Milan-ET EX-2E-CAN 5*

6-03 2x 365d 27075 3.4 928 3.2 862

Rainyridge Tony Beauty EX-5E-CAN 9*

10-5 2x 365d 29081 3.5 1005 3.1 913
Life: 8 Lact 199869 3.3 6592 3.2 6455

- All-Canadian Mature Cow 1992-93-95-99
- All-American Aged Cow 1992-95-99
- Supreme Champion WDE 1995 & 1999
- Res Grand Champion Royal Winter Fair 1999
- All-American People's Choice Winner 1999
- Holstein International Cow of Year 1999
- Res Grand Champion Royal Winter Fair 1995
- Grand Champion Royal Winter Fair 1993
- Nom All-Canadian Mature Cow 1991
- HM All-Canadian 4-Year-Old 1989



ARETHUSA SANCHEZ DICE-ET EX-94 EEEEE 2E
DAM OF LOT 38

Maternal sisters to Domino

- Arethusa Goldwyn Dixie-ET EX-94 EEEEE 3E**
- Arethusa Goldwyn Diana-ET EX-94 96-MS**
- Arethusa Stormatic Devon-ET EX-93**
- Arethusa Goldwyn Dionne-ET EX-91**
- Arethusa Goldwyn Dillon-ET EX-91**
- Arethusa Goldwyn Donna-ET EX-90**

38

ARETHUSA UNSTPBUL DAWNET-ET

840003200653194 99%RHA-I *RC
Born: June 4, 2019 • Herd No. 222

DELILAH!

- All-American 125,000 Lb Cow 2005
- 1st 125,000 Lb Cow International Show 2005
- 1st & BU 125,000lb Cow WDE 2005
- NASCO Type & Production Winner WDE 2005
- HM All-American Aged Cow 2003
- Res Sr Champion Eastern Fall/Nat 2003
- 2nd 125,000 Lb Cow International Show 2003
- Res Grand Champion Eastern Sprg/Nat 2002
- Res All-American 5-Yr-Old Cow 2001
- 2nd 5-Yr-Old Cow International Show 2001
- Grand Champion Eastern Sprg/Nat 2001

Riverdown Unstopabull-Red

11801450C 99%RHA-NA *TY *TV *TL
PTA -148M +0F -7P 80R 4/20
PTA +1.3PL 2.89SCS +.7DPR 7.2%DCE
PTA +2.74T +2.56UDC +1.76FLC 79R 4/20
GTPI +2255G

Arethusa Sanchez Dice-ET

70402081 Excellent-94 EEEEE 2E *TR *TL
6-10 2x 365d 44413 3.4 1511 2.8 1258
4-07 2x 326d 37120 3.9 1465 2.8 1045
3-03 2x 360d 36980 4.3 1575 2.7 990
2-01 2x 345d 25760 3.6 933 2.9 741
8-11 2x 200d 25620 4.0 1016 2.6 668 RIP
Fresh: August 23, 2019

- 3rd 6-Yr-Old North East Spring Nat'l 2018
 - 1st 4-Yr-Old/Sr & Grand North East Fall Nat'l 2015
- Maternal sister to Dice

Arethusa Ambition Daisy-ET EX-94

Gen-Mark Stmatic Sanchez

134422312 Excellent-94 EEEE *TR *TP *TY *TV *TL
PTA +72M -39F -9P 99R 4/20
PTA +1.19T -.09UDC +.93FLC GTPI +1539G

Arethusa Shottle Domino-ET

138821047 Excellent-93 EEEEE
5-05 2x 333d 27720 4.0 1120 2.6 728
4-02 2x 301d 23590 4.3 1004 2.7 626
3-01 2x 307d 20760 4.0 829 2.9 597
2-00 2x 310d 17300 3.2 559 3.3 568

3rd Dam

Cherown Sy Delilah-TW EX-96 EEEEE 4E
5-09 2x 365d 42583 4.6 1968 3.2 1367
Life: 2377d 231249 4.0 9162 3.0 6890

4th Dam

Browndale Warden Cher VG-86-CAN 4*
7-01 2x 365d 24899 5.1 1268 3.2 785
Life: 1825d 107521 4.7 5004 3.3 3510

5th Dam

Browndale Ulti Cherity-ET VG-85 VG-MS-CAN 2*
3-04 2x 342d 23316 4.2 990
4-05 2x 324d 18106 4.6 829

6th Dam

Green Elms Echo Christina EX-CAN 18*
6-08 2x 365d 30313 4.1 1230
Life: 4 Lact 109763 4.0 4416

- All-Canadian Mature Cow 1972, 1973
- HM All-Canadian Mature Cow 1974
- Grand Champion Royal Winter Fair 1972

ARETHUSA FARM



ARETHUSA STORMATIC DEVON-ET EX-93 EEEEE
2ND DAM OF LOT 39



CHEROWN SY DELILAH-TW EX-96 EEEEE 4E
3RD DAM OF LOT 39

Maternal sisters to Devon

Arethusa Goldwyn Dixie-ET EX-94 EEEEE 3E

Arethusa Goldwyn Diana-ET EX-94 96-MS

Arethusa Goldwyn Dionne-ET EX-91

Arethusa Goldwyn Dillon-ET EX-91

Arethusa Goldwyn Donna-ET EX-90

39

ARETHUSA BOSTON DESIGN

840003137803011 Very Good-85 VG-MS @ 2-08

Born: June 3, 2016 • Herd No. 742

2-02 2x 358d 17472 3.9 689 3.4 592

3-04 2x 134d 12604 3.9 497 3.2 399 RIP

Fresh: October 28, 2019

Milking: 68# 4.1F 3.3P SCC 44,000

Due: October 4, 2020 to Walnutlawn Sidekick
777H010992

Arethusa Boston-Red

73724487 *TL

PTA -1079M -29F -14P 81R 4/20

PTA +0.1PL 3.06SCS +1.2DPR 10.4%DCE

PTA +1.71T +1.44UDC +1.14FLC 80R 4/20

GTPI +1925G

Arethusa Goldchip Dolce-ET

840003123885850 Excellent-90 EX-MS

3-07 2x 365d 32608 3.4 1098 3.1 1023

2-02 2x 365d 30282 4.1 1232 3.0 912

Mr Chassity Gold Chip-ET

140145553 Excellent-95 *TR *TP *TY *TV *TL

PTA -667M -24F -40P 99R 4/20

PTA +1.52T +1.28UDC +1.21FLC GTPI +1748G

Arethusa Stormatic Devon-ET

139260753 Excellent-93 EEEEE *TR *TL

5-02 2x 365d 33980 4.2 1415 3.1 1062

3-09 2x 365d 28000 4.1 1135 3.0 841

2-02 2x 318d 23850 4.4 1061 3.0 713

DELILAH!

• All-American 125,000 Lb Cow 2005

• 1st 125,000 Lb Cow International Show 2005

• 1st & BU 125,000lb Cow WDE 2005

• NASCO Type & Production Winner WDE 2005

• HM All-American Aged Cow 2003

• Res Sr Champion Eastern Fall/Nat 2003

• 2nd 125,000 Lb Cow International Show 2003

• Res Grand Champion Eastern Sprg/Nat 2002

• Res All-American 5-Yr-Old Cow 2001

• 2nd 5-Yr-Old Cow International Show 2001

• Grand Champion Eastern Sprg/Nat 2001

3rd Dam

Cherown Sy Delilah-TW EX-96 EEEEE 4E

5-09 2x 365d 42583 4.6 1968 3.2 1367

Life: 2377d 231249 4.0 9162 3.0 6890

4th Dam

Browndale Warden Cher VG-86-CAN 4*

7-01 2x 365d 24899 5.1 1268 3.2 785

Life: 1825d 107521 4.7 5004 3.3 3510

5th Dam

Browndale Ulti Cherity-ET VG-85 VG-MS-CAN 2*

3-04 2x 342d 23316 4.2 990

4-05 2x 324d 18106 4.6 829

6th Dam

Green Elms Echo Christina EX-CAN 18*

6-08 2x 365d 30313 4.1 1230

Life: 4 Lact 109763 4.0 4416

• All-Canadian Mature Cow 1972, 1973

• HM All-Canadian Mature Cow 1974

• Grand Champion Royal Winter Fair 1972



ARETHUSA GOLDWYN DIANA-ET EX-94 96-MS
MATERNAL SISTER TO 2ND DAM OF LOT 40

© Leah Fisher
Maternal sisters to Devon
Arethusa Goldwyn Dixie-ET EX-94 EEEEE 3E
Arethusa Goldwyn Diana-ET EX-94 96-MS
Arethusa Shottle Domino-ET EX-93
Arethusa Goldwyn Dionne-ET EX-91
Arethusa Goldwyn Dillon-ET EX-91
Arethusa Goldwyn Donna-ET EX-90

40

ARETHUSA CAPTURE DEENA

840003137803082 99%RHA-I
Born: December 2, 2018 • Herd No. 813

"Will be serviced by sale day"

DELILAH!

- All-American 125,000 Lb Cow 2005
- 1st 125,000 Lb Cow International Show 2005
- 1st & BU 125,000lb Cow WDE 2005
- NASCO Type & Production Winner WDE 2005
- HM All-American Aged Cow 2003
- Res Sr Champion Eastern Fall/Nat 2003
- 2nd 125,000 Lb Cow International Show 2003
- Res Grand Champion Eastern Sprg/Nat 2002
- Res All-American 5-Yr-Old Cow 2001
- 2nd 5-Yr-Old Cow International Show 2001
- Grand Champion Eastern Sprg/Nat 2001

Blondin Zimmer Capture-ET

109506266C 99%RHA-I *TY *TV *TL
PTA -809M -14F -19P 80R 4/20
PTA +0.5PL 2.71SCS +1.4DPR 8.0%DCE
PTA +2.40T +2.29UDC +1.03FLC 83R 4/20
GTPI +2098G

Arethusa Goldchip Dior-ET

840003123600810 Very Good-85 VG-MS
3-07 2x 350d 36783 3.2 1189 2.9 1073
4-08 2x 365d 34939 3.7 1301 2.9 1021
2-02 2x 365d 32282 4.4 1434 2.8 915

Mr Chassity Gold Chip-ET

140145553 Excellent-95 *TR *TP *TY *TV *TL
PTA -667M -24F -40P 99R 4/20
PTA +1.52T +1.28UDC +1.21FLC GTPI +1748G

Arethusa Stormatic Devon-ET

139260753 Excellent-93 EEEEE *TR *TL
5-02 2x 365d 33980 4.2 1415 3.1 1062
3-09 2x 365d 28000 4.1 1135 3.0 841
2-02 2x 318d 23850 4.4 1061 3.0 713

3rd Dam

Cherown Sy Delilah-TW EX-96 EEEEE 4E
5-09 2x 365d 42583 4.6 1968 3.2 1367
Life: 2377d 231249 4.0 9162 3.0 6890

4th Dam

Browndale Warden Cher VG-86-CAN 4*
7-01 2x 365d 24899 5.1 1268 3.2 785
Life: 1825d 107521 4.7 5004 3.3 3510

5th Dam

Browndale Uliti Cherity-ET VG-85 VG-MS-CAN 2*
3-04 2x 342d 23316 4.2 990
4-05 2x 324d 18106 4.6 829

6th Dam

Green Elms Echo Christina EX-CAN 18*
6-08 2x 365d 30313 4.1 1230
Life: 4 Lact 109763 4.0 4416

- All-Canadian Mature Cow 1972, 1973
- HM All-Canadian Mature Cow 1974
- Grand Champion Royal Winter Fair 1972

ARETHUSA FARM



ARETHUSA GC MIO-ET EX-93
MATERNAL SISTER TO LOTS 41



ARETHUSA GC MACKENNA-ET EX-92 EX-MS
MATERNAL SISTER TO LOTS 41

Maternal sisters to Marissa & Maisie

Arethusa Goldsun Molly EX-94

Arethusa GC Mio-ET EX-93

• 1st 5-Yr-Old NE Spring Nat'l 2019

Arethusa GC Mackenna-ET EX-92 EX-MS

• 1st Sr 2-Yr-Old Northeast Fall Nat'l 2017

• 2nd Milking Yrlg Northeast Fall Nat'l 2016

41

ARETHUSA ARMANI MAISIE-ET

840003125613869

Born: September 1, 2014 • Herd No. 91

3-01 2x 295d 26459 4.4 1164 3.6 955

1-09 2x 365d 25947 5.2 1344 3.5 897

4-01 2x 260d 24355 3.9 942 3.6 875

5-01 2x 155d 14418 4.0 582 3.4 497 RIP

Fresh: October 7, 2019

Milking: 74# 4.9F 3.5P SCC 15,000

Bred: April 9, 2020 to Brenland Denver
94H018518

Maternal sister to Maisie

Arethusa Goldsun Mango-ET EX-93

Mr Apples Armani-ET

68571374 Excellent-90 *RC *CD *TP *TY *TV *TL

PTA -1926M +12F -18P 99R 4/20

PTA +.95T +1.73UDC +1.54FLC GTPI +2050G

Arethusa Dundee Mallory-ET

136560096 Excellent-94 2E EEEEE 6-01

7-05 2x 347d 34000 3.9 1328 3.0 1003

4-10 2x 302d 30460 4.4 1341 3.3 992

5-10 2x 327d 30440 3.8 1142 3.0 899

2-03 2x 318d 20420 3.9 798 3.5 705

3-04 2x 329d 20880 3.6 747 3.4 717

Life: 1623d 136200 3.9 5356 3.1 4182

Full sister to Mallory

Arethusa Dundee Melissa-ET EX-93 GMD

Maternal sister to Mallory

Arethusa SS Melody-ET EX-93

Arethusa Aspen Mardigras-ET EX-93

Regancrest Dundee-ET

127640114 Excellent-95 *TY *TV *TL

PTA -1109M -59F -33P 99R 4/20

PTA +.42T +.75UDC -.28FLC GTPI +1326G

Hillcroft Leader Melanie

9014935C Excellent-96-CAN 3E EEEEE 2*

8-04 2x 365d 46890 4.7 2192 3.1 1471

5-00 2x 365d 42050 4.1 1705 3.0 1264

3-08 2x 365d 40350 4.5 1811 2.9 1176

2-06 2x 365d 25831 3.7 946 2.8 718

Life: 1827d 181951 4.3 7845 3.2 5815

Melanie

• Supreme Champion World Dairy Expo 2004

• Unanimous All-American Aged Cow 2004

• World Champion Holstein 2004

• All-American 5 Year Old 2003

• Unanimous All-American 4 Year Old 2002

• Unanimous All-Canadian 4 Year Old 2002

• Res. All-Canadian Jr 3 Year Old 2001

3rd-5th Dams

Hillcroft Skychief Michelle VG-89 1*

7-07 2x 360d 29434 3.8 1111 3.3 974

Life: 2066d 139512 3.9 5451 3.2 4488

Hillcroft Cascade Minie VG-88-CAN 2*

10-0 2x 365d 32458 3.2 1052 2.9 955

Life: 3392d 236707 3.3 7765 3.2 7558

Hillcroft Comm Maria VG-85-CAN

7-07 2x 291d 18774 3.7 690 3.3 624

Life: 8 Lact 135387 3.8 5104 3.4 4632

PEDIGREE & PRODUCTION SALE



ARETHUSA GOLDSUN MOLLY EX-94 EX-MS 2E
DAM OF LOT 42



42

ARETHUSA SOLOMON MAUI-ET

840003200653182 99%RHA-I
Born: September 12, 2018 • Herd No. 210

Due: November 17, 2020 to Walnutlawn Sidekick
777H010992

Melanie

- Supreme Champion World Dairy Expo 2004
- Unanimous All-American Aged Cow 2004
- World Champion Holstein 2004
- All-American 5 Year Old 2003
- Unanimous All-American 4 Year Old 2002
- Unanimous All-Canadian 4 Year Old 2002
- Res. All-Canadian Jr 3 Year Old 2001

Walnutlawn Solomon-ET

11775998C 99%RHA-I *TR *TP *TY *TV *TL
PTA -425M -16F -7P 99R 4/20
PTA -1.7PL 2.88SCS +.2DPR 8.1%DCE
PTA +2.71T +1.71UDC +.58FLC 98R 4/20
GTPI +1988G

Arethusa Goldsun Molly

72323775 Excellent-94 EX-MS 2E
3-03 2x 365d 36760 4.4 1610 3.2 1171
4-09 2x 310d 33440 3.7 1248 3.1 1052
5-09 2x 331d 31940 4.0 1285 3.1 1003
2-02 2x 361d 23110 4.5 1037 3.4 785
6-11 2x 171d 19526 4.3 836 3.0 583 RIP

Toc-Farm Goldsun-ET

53990032335
PTA -1393M -62F -33P 99R 4/20
PTA +1.12T +1.15UDC -.66FLC GTPI +1416G

Arethusa Dundee Mallory-ET

136560096 Excellent-94 2E EEEEE 6-01
7-05 2x 347d 34000 3.9 1328 3.0 1003
4-10 2x 302d 30460 4.4 1341 3.3 992
5-10 2x 327d 30440 3.8 1142 3.0 899
2-03 2x 318d 20420 3.9 798 3.5 705
3-04 2x 329d 20880 3.6 747 3.4 717
Life: 1623d 136200 3.9 5356 3.1 4182

Full sister to Mallory

Arethusa Dundee Melissa-ET EX-93 GMD

Maternal sister to Mallory

Arethusa SS Melody-ET EX-93

Arethusa Aspen Mardigras-ET EX-93

3rd Dam

Hillcroft Leader Melanie EX-96-CAN 3E EEEEE 2*

8-04 2x 365d 46890 4.7 2192 3.1 1471
Life: 1827d 181951 4.3 7845 3.2 5815

4th Dam

Hillcroft Skychief Michelle VG-89 1*

7-07 2x 360d 29434 3.8 1111 3.3 974
Life: 2066d 139512 3.9 5451 3.2 4488

5th Dam

Hillcroft Cascade Minie VG-88-CAN 2*

10-0 2x 365d 32458 3.2 1052 2.9 955
Life: 3392d 236707 3.3 7765 3.2 7558

6th Dam

Hillcroft Comm Maria VG-85-CAN

7-07 2x 291d 18774 3.7 690 3.3 624
Life: 8 Lact 135387 3.8 5104 3.4 4632

ARETHUSA FARM



ARETHUSA DUNDEE MELISSA-ET EX-93
FULL SISTER TO 2ND DAM OF LOT 43

43

ARETHUSA CRSHABULL MAGNOLIA

840003210910891 99%RHA-I

Born: September 21, 2019 • Herd No. 836

Melanie

- Supreme Champion World Dairy Expo 2004
- Unanimous All-American Aged Cow 2004
- World Champion Holstein 2004
- All-American 5 Year Old 2003
- Unanimous All-American 4 Year Old 2002
- Unanimous All-Canadian 4 Year Old 2002
- Res. All-Canadian Jr 3 Year Old 2001

Oh-River Crushabull-ET

840003135145001 99%RHA-I *TR *TP *TC *TY *TV *TL

PTA +392M +0F +12P 80R 4/20

PTA +.5PL 2.83SCS -1.8DPR 10.2%DCE

PTA +3.19T +2.61UDC +1.83FLC 79R 4/20

GTPI +2250G

Arethusa Goldsun Molly

72323775 Excellent-94 EX-MS 2E

3-03 2x 365d 36760 4.4 1610 3.2 1171

4-09 2x 310d 33440 3.7 1248 3.1 1052

5-09 2x 331d 31940 4.0 1285 3.1 1003

2-02 2x 361d 23110 4.5 1037 3.4 785

6-11 2x 171d 19526 4.3 836 3.0 583 RIP

Toc-Farm Goldsun-ET

53990032335

PTA -1393M -62F -33P 99R 4/20

PTA +1.12T +1.15UDC -.66FLC GTPI +1416G

Arethusa Dundee Mallory-ET

136560096 Excellent-94 2E EEEEE 6-01

7-05 2x 347d 34000 3.9 1328 3.0 1003

4-10 2x 302d 30460 4.4 1341 3.3 992

5-10 2x 327d 30440 3.8 1142 3.0 899

2-03 2x 318d 20420 3.9 798 3.5 705

3-04 2x 329d 20880 3.6 747 3.4 717

Life: 1623d 136200 3.9 5356 3.1 4182

Full sister to Mallory

Arethusa Dundee Melissa-ET EX-93 GMD

Maternal sister to Mallory

Arethusa SS Melody-ET EX-93

Arethusa Aspen MardiGras-ET EX-93

3rd Dam

Hillcroft Leader Melanie EX-96-CAN 3E EEEEE 2*

8-04 2x 365d 46890 4.7 2192 3.1 1471

Life: 1827d 181951 4.3 7845 3.2 5815

4th Dam

Hillcroft Skychief Michelle VG-89 1*

7-07 2x 360d 29434 3.8 1111 3.3 974

Life: 2066d 139512 3.9 5451 3.2 4488

5th Dam

Hillcroft Cascade Minie VG-88-CAN 2*

10-0 2x 365d 32458 3.2 1052 2.9 955

Life: 3392d 236707 3.3 7765 3.2 7558

6th Dam

Hillcroft Comm Maria VG-85-CAN

7-07 2x 291d 18774 3.7 690 3.3 624

Life: 8 Lact 135387 3.8 5104 3.4 4632

PEDIGREE & PRODUCTION SALE



ARETHUSA ATWOOD VANORA-ET EX-92 EX-MS
DAM OF LOT 44



HUNTSHAVEN C C VIVIAN EX-94 EX-MS 2E
SAME FAMILY AS LOTS 44-47

44

ARETHUSA BOSTON VICTORY

840003137803010 Very Good-87 VG-MS *RC

Born: June 2, 2016 • Herd No. 741

2-11 2x 261d 20380 3.8 779 3.1 634

2-00 2x 272d 17270 4.9 839 3.1 530

Fresh: April 3, 2020

Arethusa Boston-Red

73724487 *TL

PTA -1079M -29F -14P 81R 4/20

PTA +0.1PL 3.06SCS +1.2DPR 10.4%DCE

PTA +1.71T +1.44UDC +1.14FLC 80R 4/20

GTPI +1925G

Arethusa Atwood Vanora-ET

840003126029561 Excellent-92 EX-MS

2-02 2x 365d 27791 4.3 1189 3.0 826

4-00 2x 107d 17026 3.5 597 2.7 461 RIP

Maternal sister to Vanora

Arethusa GC Valesca-ET EX-93

Maple-Downs-I G W Atwood-ET

8956379C Excellent-90 *TR *TP *TY *TV *TL

PTA -389M +11F -10P 99R 4/20

PTA +2.98T +1.68UDC +2.21FLC GTPI +1914G

Arethusa Sanchez Viona-ET

70871937 Excellent-94 EEEEE 2E

4-10 2x 365d 40510 4.9 1986 2.9 1188

3-05 2x 365d 35930 3.9 1417 3.0 1079

6-05 2x 241d 35010 3.3 1152 2.9 1030

1-10 2x 365d 22130 3.5 780 3.0 658

Life: 1563d 152050 4.0 6044 3.0 4607

3rd Dam

Ernest-Anthony SC Vivian EX-96 EEEEE 4E

8-03 2x 365d 44310 4.6 2059 3.1 1361

Life: 2382d 216265 3.9 8474 3.1 6713

• All-American 125,000lb Cow 2007

• Sr Champ/Grand Champ Eastern States Expo 2007

• 1st 125,000lb Cow/BU/HM Sr Champ All-Am 2007

• 1st 125,000lb Cow/BU NY Spring Show 2007

• 1st Aged Cow New York Spring Show 2005

• 1st 5yr Old/BU/Res Sr Champ Mid-East Fall Nat'l 2004

4th Dam

Huntshaven C C Vivian EX-94 EX-MS 2E

6-02 2x 347d 34510 4.3 1493 3.3 1150

Life: 1355d 127263 4.1 5214 3.2 4072

• All-American Jr 3-Yr-Old 1997

• All-Canadian Jr 3-Yr-Old 1997

5th Dam

Huntshaven Starbuck Vivian VG-88-CAN

5-08 2x 311d 26451 3.5 928 3.2 841

Life: 1702d 125896 3.6 4558 3.1 3886

6th Dam

Huntshaven Stylist Vivian VG-85-CAN

4-10 2x 335d 23089 4.1 948 3.0 695

7th Dam

Huntshaven Lancer Vivian VG-87

6-03 2x 317d 23252 3.8 877 3.3 778

Life: 113111 3.8 4336 3.3 3761

ARETHUSA FARM



ARETHUSA SANCHEZ VIONA-ET EX-94 EEEEE 2E
2ND DAM OF LOT 47 & DAM OF LOTS 45 & 46

45

ARETHUSA BROKAW VESTAH-ET

840003123600952 Excellent-93 EEEEE
Born: March 9, 2014 • Herd No. 79
4-09 2x 313d 39336 3.3 1306 2.9 1135
3-05 2x 365d 36328 3.4 1250 2.9 1066
2-01 2x 365d 23957 3.4 823 3.1 741
5-08 2x 161d 14193 3.7 523 3.0 425 RIP
Fresh: November 9, 2019
Milking: 76# 5.1F 2.7P SCC 214,000
Bred: March 8, 2020 Blondin Zimmer Capture-ET
224H004507

Mr Atwood Brokaw-ET

140602463 Very Good-86 *TR *TP *TY *TV *TL
PTA -592M -1F -5P 99R 4/20
PTA -4.4PL 3.22SCS -2.0DPR 10.9%DCE
PTA +2.63T +1.51UDC +0.68FLC 99R 4/20
GTPI +1871G

And

Lirr Drew Dempsey

61083609 Excellent-93 *TR *CD *TP *TY *TV *TL
PTA -789M -6F -7P 99R 4/20
PTA -2.4PL 2.74SCS -1.8DPR 8.0%DCE
PTA +1.61T +.90UDC +1.10FLC 99R 4/20
GTPI +1896G

Arethusa Sanchez Viona-ET

70871937 Excellent-94 EEEEE 2E
4-10 2x 365d 40510 4.9 1986 2.9 1188
3-05 2x 365d 35930 3.9 1417 3.0 1079
6-05 2x 241d 35010 3.3 1152 2.9 1030
1-10 2x 365d 22130 3.5 780 3.0 658
Life: 1563d 152050 4.0 6044 3.0 4607

Maternal sister to Viona

Arethusa SS Valisa-ET EX-93

Gen-Mark Smatic Sanchez

134422312 Excellent-94 EEEE *TR *TP *TY *TV *TL *TD
PTA +72M -39F -9P 99R 4/20
PTA +1.19T -.09UDC +.93FLC GTPI +1539G

Ernest-Anthony SC Vivian

125524490 Excellent-96 EEEEE 4E
8-03 2x 365d 44310 4.6 2059 3.1 1361
5-11 2x 365d 43440 3.6 1551 3.0 1296
3-11 2x 365d 37300 3.5 1299 3.0 1107
8-03 2x 365d 44310 4.6 2059 3.1 1361
2-08 2x 365d 26855 3.9 1038 3.2 862
Life: 2382d 216265 3.9 8474 3.1 6713

46

ARETHUSA DEMPSEY VIMEO-ET

840003137803044
Born: September 1, 2017 • Herd No. 775
1-10 2x 238d 16216 4.1 664 3.1 501
Fresh: July 16, 2019
Milking: 76# 4.0F 3.0P SCC 66,000

Due: October 2, 2020 to Riverdown Unstopabull-Red
799H000004

3rd Dam

Huntshaven C C Vivian EX-94 EX-MS 2E
6-02 2x 347d 34510 4.3 1493 3.3 1150
Life: 1355d 127263 4.1 5214 3.2 4072
• All-American Jr 3-Yr-Old 1997
• All-Canadian Jr 3-Yr-Old 1997

4th Dam

Huntshaven Starbuck Vivian VG-88-CAN
5-08 2x 311d 26451 3.5 928 3.2 841
Life: 1702d 125896 3.6 4558 3.1 3886

5th Dam

Huntshaven Stylist Vivian VG-85-CAN
4-10 2x 335d 23089 4.1 948 3.0 695

6th Dam

Huntshaven Lancer Vivian VG-87
6-03 2x 317d 23252 3.8 877 3.3 778
Life: 113111 3.8 4336 3.3 3761



ERNEST-ANTHONY SC VIVAN EX-96 EEEEE 4E
3RD DAM OF LOT 47

47

ARETHUSA BEEMER VANYA

840003137803085 99%RHA-I
Born: December 19, 2018 • Herd No. 816

Due: November 20, 2020 to EDG Uno Helix 1408-ET
151H000689

Pol Butte Mc Beemer-ET

7525863C Excellent-92 *TP *TC *TY *TV *TL
PTA +434M +21F +12P 99R 12/19
PTA -2.5PL 3.16SCS -4.8DPR 5.4%DCE
PTA +3.15T +2.31UDC +1.69FLC 99R 12/19
GTPI +1768G

Arethusa Brokaw Vestah-ET

8400031236000952 Excellent-93 EEEEE
4-09 2x 313d 39336 3.3 1306 2.9 1135
3-05 2x 365d 36328 3.4 1250 2.9 1066
2-01 2x 365d 23957 3.4 823 3.1 741
5-08 2x 122d 11229 3.5 398 3.0 339 RIP
Fresh: November 9, 2019
• Sells as Lot 48

Mr Atwood Brokaw-ET

140602463 Very Good-86 *TR *TP *TY *TV *TL
PTA -592M -1F -5P 99R 4/20
PTA +2.63T +1.51UDC +0.68FLC GTPI +1871G

Arethusa Sanchez Viona-ET

70871937 Excellent-94 EEEEE 2E
4-10 2x 365d 40510 4.9 1986 2.9 1188
3-05 2x 365d 35930 3.9 1417 3.0 1079
6-05 2x 241d 35010 3.3 1152 2.9 1030
1-10 2x 365d 22130 3.5 780 3.0 658
Life: 1563d 152050 4.0 6044 3.0 4607

3rd Dam

Ernest-Anthony SC Vivian EX-96 EEEEE 4E

8-03 2x 365d 44310 4.6 2059 3.1 1361
Life: 2382d 216265 3.9 8474 3.1 6713
• All-American 125,000lb Cow 2007
• Sr Champ/Grand Champ Eastern States Expo 2007
• 1st 125,000lb Cow/BU/HM Sr Champ All-Am 2007
• 1st 125,000lb Cow/BU NY Spring Show 2007
• 1st Aged Cow New York Spring Show 2005
• 1st 5yr Old/BU/Res Sr Champ Mid-East Fall Nat'l 2004

4th Dam

Huntshaven C C Vivian EX-94 EX-MS 2E

6-02 2x 347d 34510 4.3 1493 3.3 1150
Life: 1355d 127263 4.1 5214 3.2 4072
• All-American Jr 3-Yr-Old 1997
• All-Canadian Jr 3-Yr-Old 1997

5th Dam

Huntshaven Starbuck Vivian VG-88-CAN

5-08 2x 311d 26451 3.5 928 3.2 841
Life: 1702d 125896 3.6 4558 3.1 3886

6th Dam

Huntshaven Stylist Vivian VG-85-CAN

4-10 2x 335d 23089 4.1 948 3.0 695

7th Dam

Huntshaven Lancer Vivian VG-87

6-03 2x 317d 23252 3.8 877 3.3 778
Life: 113111 3.8 4336 3.3 3761

ARETHUSA FARM



ARETHUSA ABSOLUTE ZAZA VG-88 EX-MS
SELLS AS LOT 48 & MATERNAL SISTER TO LOT 49

48

ARETHUSA ABSOLUTE ZAZA

73450836 Very Good-88 EX-MS *RC
Born: September 5, 2013 • Herd No. 612
2-11 2x 365d 31450 5.6 1750 3.3 1049
5-08 2x 282d 23815 6.1 566 4.1 381 RIP
4-03 2x 249d 23390 4.6 1071 3.2 747
1-11 2x 271d 19430 4.5 870 3.6 701
Fresh: June 2, 2019
Milking: 61# 5.9F 4.1P SCC 23,000 • Sells Dry
Due: September 8, 2020 to Walnutlawn Solomon-ET
200HO10146

Apples Absolute-Red-ET

139358472 Excellent-94 *CV *TC *TY *TL
PTA -2024M -17F -27P 99R 4/20
PTA -6.1PL 3.53SCS -5.1DPR 13.8%DCE
PTA +2.14T +2.62UDC +1.57FLC 99R 4/20
GTPI +1531G

Arethusa Sanchez Zinnia-ET

69189068 Excellent-94 EEEEE 3E
7-09 2x 365d 45160 4.0 1810 3.4 1555
6-02 2x 365d 36810 4.3 1571 3.4 1252
9-01 2x 365d 34230 3.8 1296 3.5 1193
5-00 2x 348d 32170 4.3 1379 3.5 1115
3-11 2x 338d 29430 3.9 1150 3.4 1003
3-00 2x 300d 21050 4.0 839 3.1 655
2-00 2x 270d 14410 4.0 580 3.2 466
Life: 2467d 221010 4.1 9114 3.4 7569

And

Walnutlawn Solomon-ET

11775998C 99%RHA-I *TR *TP *TY *TV *TL
PTA -425M -16F -7P 99R 4/20
PTA +2.71T +1.71UDC +.58FLC GTPI +1988G

Gen-Mark Stmatic Sanchez

134422312 Excellent-94 EEEE *TR *TP *TY *TV *TL *TD
PTA +72M -39F -9P 99R 4/20
PTA +1.19T -.09UDC +.93FLC GTPI +1539G

Santchi Leduc Victoria

8215167C Excellent-94 EEEEE 3E
6-02 2x 365d 42230 5.2 2175 3.3 1379
2nd CT Fat & 3rd CT Milk
3-08 2x 365d 36960 4.5 1664 3.4 1267
9-07 2x 338d 33400 3.9 1313 3.1 1044
2-02 2x 365d 27790 4.2 1165 3.2 879
Life: 1758d 155390 4.6 7116 3.3 5191
• HM All-American 4-Year-Old 2005
• Reserve All-American Sr 3-Yr-Old 2004
• Reserve All-American Sr 2-Yr-Old 2003

49

ARETHUSA SOLOMON ZOEY

840003137803079 99%RHA-I
Born: October 19, 2018 • Herd No. 810

Due: December 8, 2020 to Mr Affection Analyst-Red-ET
7HO15023

Maternal sister to Zinna

Arethusa Gold Valencia-ET EX-95 96-MS

• Nom All-American 4-Yr-Old 2010

Arethusa Dundee Voo Doo EX-93

Arethusa Goldwyn Olivia-ET EX-93

Arethusa Dundee Vegas EX-92

3rd-9th Dams

Santchi Mason Victorine EX-2E-CAN

7-08 2x 365d 27776 4.6 1268 3.5 977
Life: 5 Lact 122238 4.3 5260 3.7 4493

Lotus Leadman Victoria-ET VG-85-CAN

6-00 2x 305d 27968 3.8 1063 3.5 966
Life: 1938d 131440 4.0 5242 3.6 4733

Cranland Marie Nina Pete EX-90

3-06 2x 293d 20919 4.2 871 3.3 688

Cranland Nina Vera Valiant EX-90

Life: 5 Lacs 118499 3.9 4594 3.3 3419

Cranland Vera Lydia DT VG-86

4-08 2x 330d 20750 3.8 783

Cranland Lydia Penny Maple EX-92-5E GMD



SANTCHI LEDUC VICTORIA EX-94 3E
SAME FAMILY AS LOTS 47-54

50

ARETHUSA BRADY ZETTA

840003137803022 Very Good-87 VG-MS
Born: September 1, 2016 • Herd No. 753
2-00 2x 302d 16076 4.4 712 3.4 542
3-00 2x 186d 14074 3.6 505 3.1 443 RIP
Fresh: September 6, 2019
Milking: 61# 4.2F 3.4P SCC 35,000

Bred: March 8, 2020 to Avant-Garde Unix Select-ET
7H014920

Butz-Butler Atwood Brady-ET

140610404 Excellent-93 *TC *TY *TV *TL
PTA -692M -50F -46P 99R 4/20
PTA -2.1PL 2.84SCS -4.3DPR 10.7%DCE
PTA +2.25T +1.95UDC +.64FLC 98R 4/20
GTPI +1472G

Arethusa Absolute Zaza

73450836 Very Good-88 EX-MS *RC
2-11 2x 365d 31450 5.6 1750 3.3 1049
5-08 2x 282d 23815 6.1 566 4.1 381 RIP
4-03 2x 249d 23390 4.6 1071 3.2 747
1-11 2x 271d 19430 4.5 870 3.6 701

Apples Absolute-Red-ET

139358472 Excellent-94 *CV *TC *TY *TL
PTA -2024M -17F -27P 99R 4/20
PTA +2.14T +2.62UDC +1.57FLC GTPI +1531G

Arethusa Sanchez Zinnia-ET

69189068 Excellent-94 EEEEE 3E
7-09 2x 365d 45160 4.0 1810 3.4 1555
6-02 2x 365d 36810 4.3 1571 3.4 1252
9-01 2x 365d 34230 3.8 1296 3.5 1193
5-00 2x 348d 32170 4.3 1379 3.5 1115
3-11 2x 338d 29430 3.9 1150 3.4 1003
3-00 2x 300d 21050 4.0 839 3.1 655
2-00 2x 270d 14410 4.0 580 3.2 466
Life: 2467d 221010 4.1 9114 3.4 7569

3rd Dam

Santchi Leduc Victoria EX-94 EEEEE 3E
6-02 2x 365d 42230 5.2 2175 3.3 1379
2nd CT Fat & 3rd CT Milk
Life: 1758d 155390 4.6 7116 3.3 5191
• HM All-American 4-Year-Old 2005
• Reserve All-American Sr 3-Yr-Old 2004
• Reserve All-American Sr 2-Yr-Old 2003

4th Dam

Santchi Mason Victorine EX-2E-CAN
7-08 2x 365d 27776 4.6 1268 3.5 977
Life: 5 Lact 122238 4.3 5260 3.7 4493

5th-10th Dams

Lotus Leadman Victoria-ET VG-85-CAN
6-00 2x 305d 27968 3.8 1063 3.5 966
Life: 1938d 131440 4.0 5242 3.6 4733
Craneland Marie Nina Pete EX-90
3-06 2x 293d 20919 4.2 871 3.3 688
Craneland Nina Vera Valiant EX-90
Life: 5 Lacs 118499 3.9 4594 3.3 3419
Craneland Vera Lydia DT VG-86
4-08 2x 330d 20750 3.8 783
Craneland Lydia Penny Maple EX-92-5E GMD
Life: 9 Lacs 274010 3.6 9954
Gold Top Penny Bess Eric VG-85
5-06 2x 305d 21570 3.6 772

ARETHUSA FARM



ARETHUSA GOLD VALENCIA-ET EX-95 EEEEE 3E GMD
DAM OF LOT 51 & 2ND DAM OF LOT 52

51

ARETHUSA DOORMAN GLIMMER-ET

840003126029631 99%RHA-I

Born: September 8, 2015 • Herd No. 710

2-09 2x 344d 40653 3.4 1371 3.2 1282

1-09 2x 353d 28737 3.5 995 3.2 910

3-11 2x 195d 23970 3.5 842 2.9 704 RIP

Fresh: August 28, 2019

Milking: 113# 3.9F 3.4P SCC 13,000

Due: September 24, 2020 to Woodcrest King Doc 250H012961

52

ARETHUSA BEEMER GOLD

840003137803069 99%RHA-I

Born: July 4, 2018 • Herd No. 800

Sire: **Pol Butte Mc Beemer-ET**

Dam: **Arethusa Doorman Glimmer-ET**

Due: June 20, 2020 to Brenland Denver 94H018518

Val-Bisson Doorman-ET

107281711C Excellent-90-CAN *TR *TP *TY *TL

PTA -453M +14F +10P 99R 4/20

PTA +.3PL 2.66SCS -2.0DPR 8.3%DCE

PTA +2.59T +1.61UDC +1.04FLC 99R 4/20

GTPI +2222G

Arethusa Gold Valencia-ET

137592234 Excellent-95 EEEEE 3E GMD

8-04 2c 365d 43060 5.3 2301 3.0 1279

6-09 2x 365d 39880 4.5 1777 3.0 1197

4-02 2x 329d 34110 4.7 1599 3.0 1036

3-00 2x 365d 31720 3.8 1208 3.1 976

5-02 2c 350d 29760 4.9 1458 3.0 881

1-11 2x 334d 20030 3.8 765 3.2 645

Life: 2243d 210450 4.6 9583 3.1 6460

• 1st 4-Yr-Old N-E Fall Nat'l 2010

• 9th 4-Yr-Old Int'l Holstein Show 2010

• Mem. Nom. All-Am Best 3 Females 2009

• Mem. Nom. All-Am Produce of Dam 2009

• 1st Jr 3-Yr-Old/Best BO, BU/Res Int. Champ East Nat'l 2009

• 1st/Res Supreme Champ Expo Int'l Futurity 2009

Maternal sisters to Valencia

Arethusa Roy Virtuosa VG-88

Arethusa Dundee Voo Doo EX-92 93-MS

Arethusa Dundee Vegas EX-92

Braedale Goldwyn

10705608C GP-CAN EXTRA'05 GM 12/11 *TV *TL

PTA -756M -8F -14P 99R 4/20

PTA +.97T +.53UDC +.83FLC GTPI +1848G

Santchi Leduc Victoria

8215167C Excellent-94 EEEEE 3E

6-02 2x 365d 42230 5.2 2175 3.3 1379

2nd CT Fat & 3rd CT Milk

3-08 2x 365d 36960 4.5 1664 3.4 1267

9-07 2x 338d 33400 3.9 1313 3.1 1044

2-02 2x 365d 27790 4.2 1165 3.2 879

Life: 1758d 155390 4.6 7116 3.3 5191

• HM All-American 4-Year-Old 2005

• Reserve All-American Sr 3-Yr-Old 2004

• Reserve All-American Sr 2-Yr-Old 2003

3rd-9th Dams

Santchi Mason Victorine EX-2E-CAN

7-08 2x 365d 27776 4.6 1268 3.5 977

Life: 5 Lact 122238 4.3 5260 3.7 4493

Lotus Leadman Victoria-ET VG-85-CAN

6-00 2x 305d 27968 3.8 1063 3.5 966

Life: 1938d 131440 4.0 5242 3.6 4733

Craneland Marie Nina Pete EX-90

3-06 2x 293d 20919 4.2 871 3.3 688

Craneland Nina Vera Valiant EX-90

Life: 5 Lacs 118499 3.9 4594 3.3 3419

Craneland Vera Lydia DT VG-86

4-08 2x 330d 20750 3.8 783

Craneland Lydia Penny Maple EX-92-5E GMD

Life: 9 Lacs 274010 3.6 9954

Gold Top Penny Bess Eric VG-85

5-06 2x 305d 21570 3.6 772



ARETHUSA SANCHEZ VALISE-ET EX-94 EEEEE 2E
SELLS AS LOT 53

53

Gen-Mark Stmatic Sanchez

134422312 Excellent-94 EEEE *TR *TP *TV *TL *TD
PTA +72M -39F -9P 99R 4/20
PTA -.3.2PL 3.28SCS -3.9DPR 7.8%DCE
PTA +1.19T -.09UDC +.93FLC 99R 4/20
GTPI +1539G

Arethusa Gold Valencia-ET

137592234 Excellent-95 EEEEE 3E GMD
8-04 2c 365d 43060 5.3 2301 3.0 1279
6-09 2x 365d 39880 4.5 1777 3.0 1197
4-02 2x 329d 34110 4.7 1599 3.0 1036
3-00 2x 365d 31720 3.8 1208 3.1 976
5-02 2c 350d 29760 4.9 1458 3.0 881
1-11 2x 334d 20030 3.8 765 3.2 645
Life: 2243d 210450 4.6 9583 3.1 6460

- 1st 4-Yr-Old N-E Fall Nat'l 2010
- 9th 4-Yr-Old Int'l Holstein Show 2010
- Mem. Nom. All-Am Best 3 Females 2009
- Mem. Nom. All-Am Produce of Dam 2009
- 1st Jr 3-Yr-Old/Best BO, BU/Res Int. Champ East Nat'l 2009
- 1st/Res Supreme Champ Expo Int'l Futurity 2009

ARETHUSA SANCHEZ VALISE-ET

71311382 Excellent-94 EEEEE 2E
Born: September 4, 2011 • Herd No. 569
6-05 2x 365d 48860 3.1 1498 3.0 1457
5-05 2x 314d 44990 3.2 1419 2.9 1324
4-02 2x 333d 42180 3.1 1300 3.0 1259
3-01 2x 336d 33210 5.7 1898 2.9 977
7-10 2x 240d 32365 3.8 1245 3.0 964 RIP
2-00 2x 309d 20910 4.1 848 3.1 658
Fresh: July 14, 2019
Milking: 139# 4.2F 3.3P SCC 54,000
Bred: April 2, 2020 to EDG Uno Helix 1408-ET
151H000689

Braedale Goldwyn

10705608C GP-CAN EXTRA'05 GM 12/11 *TV *TL
PTA -756M -8F -14P 99R 4/20
PTA +.97T +.53UDC +.83FLC GTPI +1848G

Santchi Leduc Victoria

8215167C Excellent-94 EEEEE 3E
6-02 2x 365d 42230 5.2 2175 3.3 1379
2nd CT Fat & 3rd CT Milk
3-08 2x 365d 36960 4.5 1664 3.4 1267
9-07 2x 338d 33400 3.9 1313 3.1 1044
2-02 2x 365d 27790 4.2 1165 3.2 879
Life: 1758d 155390 4.6 7116 3.3 5191
• HM All-American 4-Year-Old 2005
• Reserve All-American Sr 3-Yr-Old 2004
• Reserve All-American Sr 2-Yr-Old 2003

3rd-9th Dams

Santchi Mason Victorine EX-2E-CAN

7-08 2x 365d 27776 4.6 1268 3.5 977
Life: 5 Lact 122238 4.3 5260 3.7 4493

Lotus Leadman Victoria-ET VG-85-CAN

6-00 2x 305d 27968 3.8 1063 3.5 966
Life: 1938d 131440 4.0 5242 3.6 4733

Craneland Marie Nina Pete EX-90

3-06 2x 293d 20919 4.2 871 3.3 688

Craneland Nina Vera Valiant EX-90

Life: 5 Lacs 118499 3.9 4594 3.3 3419

Craneland Vera Lydia DT VG-86

4-08 2x 330d 20750 3.8 783

Craneland Lydia Penny Maple EX-92-5E GMD

Life: 9 Lacs 274010 3.6 9954

Gold Top Penny Bess Eric VG-85

5-06 2x 305d 21570 3.6 772

ARETHUSA FARM



SANTCHI LEDUC VICTORIA EX-94 EEEEE 3E
3RD DAM OF LOT 54

54

ARETHUSA KINGBOY GISELE

840003137803058 99%RHA-I
Born: March 8, 2018 • Herd No. 789
Fresh: March 7, 2020

Morningview Mcc Kingboy-ET

72044077 99%RHA-I EX-92 *TR *TP *TC *TY *TV *TL
PTA +887M +26F +25P 99R 4/20
PTA -0.5PL 2.80SCS +.8DPR 6.6%DCE
PTA +2.10T +1.53UDC +.45FLC 99R 4/20
GTPI +2395G

Arethusa Doorman Glisten-ET

840003126029626 Very Good-88 VG-MS
3-05 2x 289d 31096 2.9 916 3.3 1014
2-06 2x 297d 22968 3.2 737 3.3 765

Val-Bisson Doorman-ET

107281711C Excellent-90-CAN *TR *TP *TY *TL
PTA -453M +14F +10P 99R 4/20
PTA +2.59T +1.61UDC +1.04FLC GTPI +2222G

Arethusa Gold Valencia-ET

137592234 Excellent-95 EEEEE 3E GMD
8-04 2c 365d 43060 5.3 2301 3.0 1279
6-09 2x 365d 39880 4.5 1777 3.0 1197
4-02 2x 329d 34110 4.7 1599 3.0 1036
3-00 2x 365d 31720 3.8 1208 3.1 976
5-02 2c 350d 29760 4.9 1458 3.0 881
1-11 2x 334d 20030 3.8 765 3.2 645
Life: 2243d 210450 4.6 9583 3.1 6460
• 1st 4-Yr-Old N-E Fall Nat'l 2010
• 9th 4-Yr-Old Int'l Holstein Show 2010
• Mem. Nom. All-Am Best 3 Females 2009
• Mem. Nom. All-Am Produce of Dam 2009
• 1st Jr 3-Yr-Old/Best BO, BU/Res Int. Champ East Nat'l 2009
• 1st/Res Supreme Champ Expo Int'l Futurity 2009

3rd-10th Dams

Santchi Leduc Victoria EX-94 EEEEE 3E
6-02 2x 365d 42230 5.2 2175 3.3 1379
2nd CT Fat & 3rd CT Milk

Life: 1758d 155390 4.6 7116 3.3 5191

- HM All-American 4-Year-Old 2005
- Reserve All-American Sr 3-Yr-Old 2004
- Reserve All-American Sr 2-Yr-Old 2003

Santchi Mason Victorine

EX-2E-CAN
7-08 2x 365d 27776 4.6 1268 3.5 977
Life: 5 Lact 122238 4.3 5260 3.7 4493

Lotus Leadman Victoria-ET VG-85-CAN
6-00 2x 305d 27968 3.8 1063 3.5 966
Life: 1938d 131440 4.0 5242 3.6 4733

Craneland Marie Nina Pete EX-90
3-06 2x 293d 20919 4.2 871 3.3 688

Craneland Nina Vera Valiant EX-90
Life: 5 Lacs 118499 3.9 4594 3.3 3419

Craneland Vera Lydia DT VG-86
4-08 2x 330d 20750 3.8 783

Craneland Lydia Penny Maple EX-92-5E GMD
Life: 9 Lacs 274010 3.6 9954

Gold Top Penny Bess Eric VG-85
5-06 2x 305d 21570 3.6 772

PEDIGREE & PRODUCTION SALE



EDG CLAIRE CLING-ET VG-85-CAN
2ND DAM OF LOT 55 & 56



PINE-SHELTER CLAIRE WOOD-ET VG-87-CAN
3RD DAM OF LOT 55 & 56



PINE-SHELTER CHEYENNE EX-95 3E DOM
5TH DAM OF LOT 55 & 56

55

WOODMANSEES KINGBOY COURAGE

840003137803070 99%RHA-I *RC *TC *TL
Born: July 29, 2018 • Herd No. 801

Due: August 2, 2020 to Croteau Lesperron Unix-ET
777H003913

56

WOODMANSEES KINGBOY CALYPSO-ET

840003210910890 99%RHA-I
Born: September 3, 2019 • Herd No. 835

Morningview Mcc Kingboy-ET

72044077 99%RHA-I EX-92 *TR *TP *TC *TY *TV *TL
PTA +887M +26F +25P 99R 4/20
PTA -0.5PL 2.80SCS +.8DPR 6.6%DCE
PTA +2.10T +1.53UDC +.45FLC 99R 4/20
GTPI +2395G

Ms Cling Doorman Clang-ET

840003137522972 99%RHA-I Good Plus-82
1-10 2x 346d 22410 4.6 1041 3.2 728
3-03 2x 99d 8657 4.2 364 3.3 287 RIP

Full brother of Clang

Maverick Crush 94H017998 GTPI +2037

Maternal sister to Clang

Ms Cling Doorman Clasp-ET EX-89

Ms Cling Solomon Cherish-ET VG-86

Val-Bisson Doorman-ET

107281711C Excellent-90-CAN *TR *TP *TY *TL
PTA -453M +14F +10P 99R 4/20
PTA +2.59T +1.61UDC +1.04FLC GTPI +2222G
EDG Claire Cling-ET
71494758 Very Good-85-CAN
2-00 2x 365d 28929 4.7 1369 3.5 1003

3rd Dam

Pine-Shelter Claire Wood-ET VG-87-CAN
2-05 2x 365d 32390 4.2 1346 3.0 975

4th Dam

Pine-Shelter Chelsy Sho-ET VG-86 DOM
2-00 3x 365d 32050 3.7 1174 3.2 1039

5th Dam

Pine-Shelter Cheyenne EX-95 3E DOM
4-08 3x 365d 40820 3.4 1376 3.2 1314
3-07 3x 350d 33131 3.4 1135 3.3 1096

- Grand Champ Int'l Holstien Show 2003
- Res All-American 4-Yr-Old 2004
- Res All-American 125,000lb Cow 2006
- 2003 People's Choice Winner

ARETHUSA FARM



ERNEST-ANTHONY THRILLER-ET EX-95 EEEEE 2E
2ND DAM OF LOT 57

57

ARETHUSA ON A TUESDAY

840003126029627 Very Good-85 VG-MS *RC
Born: September 2, 2015 • Herd No. 706
2-11 2x 332d 27935 3.3 909 3.5 967
1-10 2x 356d 26041 3.8 992 3.5 923
4-00 2x 161d 16849 4.6 767 3.2 535
Fresh: October 1, 2019

Due: December 15, 2020 to Avant-Garde Unix Select-ET
7H014920

Maternal sisters to Thrilling

Ernest-Anthony MS Theory-ET EX-95 EEEEE

- Member of HM All-American Produce of Dam 2016
- Member of Nom. All-Am Sr Best Three Females 2016
- 2nd 4-Yr-Old Eastern Fall Nat'l 2016
- 2nd Sr 2-Yr-Old Eastern Fall Nat'l 2014
- 5th Fall Yearling Eastern Fall Nat'l 2013

Same family as Lots 5-8

Ernest-Anthony Temptation

- 1st Spring Calf Int'l Jr Holstein Show 2019
- 5th Spring Calf Int'l Holstein Show 2019

Arethusa Prince-Red-ET

142186165
PTA -307M -3F +8P 41R 12/19
PTA +.6PL 2.93SCS -.5DPR 9.3%DCE
PTA +1.27T +.60UDC +.50FLC 42R 12/19
PTPI +1711

Ernest-Anthony Thrilling-ET

71311499 Excellent-92 EX-MS
4-11 2x 365d 56290 4.1 2301 3.1 1755
6-03 2x 286d 46580 3.6 1668 3.0 1398
3-11 2x 273d 34950 3.9 1349 3.2 1122
2-00 2x 322d 24630 3.4 839 3.3 803
Life: 1298d 167860 3.8 6401 3.1 5281

Braedale Goldwyn

10705608C GP-CAN EXTRA'05 GM 12/11 *TV *TL
PTA -756M -8F -14P 99R 4/20
PTA +.97T +.53UDC +.83FLC GTPi +1848G

Ernest-Anthony Thriller-ET

138172013 Excellent-95 EEEEE 2E
2-11 2x 365d 37310 4.7 1766 3.1 1171
7-11 2x 315d 30610 4.1 1261 3.0 932
Life: 1545d 139420 4.2 5888 3.1 4327
• HM All-American Produce of Dam 2016
• 1st Sr 3-Yr-Old, BU, Best Bred & Owned, Int Champ
& Grand Champ Eastern States 2010
• 1st Sr 3-Yr-Old NY Spring Show 2010

3rd Dam

Ernest-Anthony Tyra-ET EX-94 EEEEE GMD DOM

5-08 2x 365d 42179 4.5 1931 3.3 1432
Life: 1281d 119220 4.4 5258 3.6 4310
• Res All-Canadian Sr 3-Yr-Old Cow 2002
• 1st Bill Graham WDE Sweepstakes 2002

4th Dam

C Alanvale Inspiration Tina EX-95 2E GMD DOM

Life: 1503d 136010 4.5 6122 3.3 4555
• Res All-American Aged Cow 1995-1996
• Res Sr & Res Gr Ch International Show 1995
• All-Canadian Jr 3-Yr-Old Cow 1993
• Supreme Champion Eastern National 1993
• HM All-American Jr 2-Yr-Old Cow 1991

5th Dam

Alanvale Puget Anetia VG-85-CAN

Life: 11 Lact 203901 4.2 8503 3.5 5600



MS TRI-DEE RM ATWOOD TARA EX-93 EX-MS 2E
SELLS AS LOT 58

58

MS TRI-DEE RM ATWOOD TARA

141706656 Excellent-93 EX-MS 2E *TR *TL

Born: June 1, 2011 • Herd No. 52

6-10 2x 365d 48950 4.0 1960 2.9 1401

3-00 2x 365d 34530 4.2 1461 2.9 1001

4-01 2x 272d 24300 3.6 866 2.8 673

5-00 2x 237d 23810 3.8 914 2.7 643

2-00 2x 295d 19740 3.4 666 2.7 535

• Sells Dry & Open

• 4th 4-Yr-Old NE Fall Nat'l 2015

• 1st Jr 3-Yr-Old/Int Sr Champ NE Fall Nat'l 2014

Maple-Downs-I G W Atwood-ET

8956379C Excellent-90 *TR *TP *TY *TV *TL

PTA -389M +11F -10P 99R 4/20

PTA -2.5PL 3.13SCS -4.6DPR 12.3%DCE

PTA +2.98T +1.68UDC +2.21FLC 99R 4/20

GTPI +1914G

U-Of-D Stormatic 876-ET

62810868 Excellent-90 EX-MS

4-04 2x 365d 32540 3.3 1065 2.9 954

3-03 2x 321d 25680 2.4 627 3.1 800

2-01 2x 365d 24720 3.2 798 3.1 764

Comestar Stormatic-ET

6947936C Excellent-CAN *CD *TV

PTA -366T -42F -25P 99R 4/20

PTA -.08T -.97UDC +1.43FLC GTPI +1462G

U-Of-D Roy 696

60290851 Very Good-87 VG-MS

3-04 2x 305d 27380 3.6 982 3.0 809

2-05 2x 302d 25090 3.5 889 2.9 735

5-00 2x 313d 21170 3.7 773 2.8 592

ARETHUSA FARM

59

ARETHUSA ABSTRACT TRINITY

840003137803060 99%RHA-I

Born: April 3, 2018 • Herd No. 791

Fresh: April 1, 2020

KHW Silver Abstract-ET

840003128204853 99%RHA-I *CV *TC *TY *TL

PTA +7M +12F +2P 94R 4/20

PTA +1.0PL 2.83SCS -2.0DPR 6.1%DCE

PTA +2.31T +2.23UDC +1.71FLC 89R 4/20

GTPI +2218G

Ms Tri-Dee RM Atwood Tara

141706656 Excellent-93 EX-MS 2E *TR *TL

6-10 2x 365d 48950 4.0 1960 2.9 1401

3-00 2x 365d 34530 4.2 1461 2.9 1001

4-01 2x 272d 24300 3.6 866 2.8 673

5-00 2x 237d 23810 3.8 914 2.7 643

2-00 2x 295d 19740 3.4 666 2.7 535

8-06 2x 79d 11157 4.2 470 2.7 306 RIP

Milking: 117# 3.5F 2.5P SCC 373,000

• 4th 4-Yr-Old NE Fall Nat'l 2015

• 1st Jr 3-Yr-Old/Int Sr Champ NE Fall Nat'l 2014

3rd Dam

U-Of-D Roy 696 VG-87 VG-MS

3-04 2x 305d 27380 3.6 982 3.0 809

2-05 2x 302d 25090 3.5 889 2.9 735

Maple-Downs-I G W Atwood-ET

8956379C Excellent-90 *TR *TP *TY *TV *TL

PTA -389M +11F -10P 99R 4/20

PTA +2.98T +1.68UDC +2.21FLC GTPI +1914G

U-Of-D Stormatic 876-ET

62810868 Excellent-90 EX-MS

4-04 2x 365d 32540 3.3 1065 2.9 954

3-03 2x 321d 25680 2.4 627 3.1 800

2-01 2x 365d 24720 3.2 798 3.1 764

60

ARETHUSA KNGBOY TWILIGHT-ET

840003200653173 99%RHA-I

Born: March 6, 2018 • Herd No. 201

Fresh: March 5, 2020

Milking: 76# 4.3F 2.9P SCC 71,000

• Sells Open

Morningview Mcc Kingboy-ET

72044077 99%RHA-I EX-92 *TR *TP *TC *TY *TV *TL

PTA +887M +26F +25P 99R 4/20

PTA -0.5PL 2.80SCS +.8DPR 6.6%DCE

PTA +2.10T +1.53UDC +.45FLC 99R 4/20

GTPI +2395G

Ms Tri-Dee RM Atwood Tara

141706656 Excellent-93 EX-MS 2E *TR *TL

6-10 2x 365d 48950 4.0 1960 2.9 1401

3-00 2x 365d 34530 4.2 1461 2.9 1001

4-01 2x 272d 24300 3.6 866 2.8 673

5-00 2x 237d 23810 3.8 914 2.7 643

2-00 2x 295d 19740 3.4 666 2.7 535

8-06 2x 79d 11157 4.2 470 2.7 306 RIP

Milking: 117# 3.5F 2.5P SCC 373,000

• 4th 4-Yr-Old NE Fall Nat'l 2015

• 1st Jr 3-Yr-Old/Int Sr Champ NE Fall Nat'l 2014

3rd Dam

U-Of-D Roy 696 VG-87 VG-MS

3-04 2x 305d 27380 3.6 982 3.0 809

2-05 2x 302d 25090 3.5 889 2.9 735

Maple-Downs-I G W Atwood-ET

8956379C Excellent-90 *TR *TP *TY *TV *TL

PTA -389M +11F -10P 99R 4/20

PTA +2.98T +1.68UDC +2.21FLC GTPI +1914G

U-Of-D Stormatic 876-ET

62810868 Excellent-90 EX-MS

4-04 2x 365d 32540 3.3 1065 2.9 954

3-03 2x 321d 25680 2.4 627 3.1 800

2-01 2x 365d 24720 3.2 798 3.1 764

61

MS TARAS TIJUANA

840003141281727 Excellent-93 EX-MS *TR *TL

Born: June 1, 2014 • Herd No. 1727

19K GTPI +2097G

3-09 2x 365d 47560 3.6 1693 3.2 1525

2-09 2x 271d 27740 3.9 1081 3.3 914

5-02 2x 245d 34970 3.6 1248 3.0 1055

• Sells Dry

Due: July 21, 2020 to Blondin Zimmer Capture-ET

224H004507

Mel-Crest Altazaroz

138929709 *BR *TY *TV *TL

PTA +73M +53F +8P 99R 4/20

PTA +1.2PL 2.78SCS -2.6DPR 6.3%DCE

PTA -.10T +.80UDC +.53FLC 97R 4/20

GTPI +2240G

Ms Tri-Dee RM Atwood Tara

141706656 Excellent-93 EX-MS 2E *TR *TL

6-10 2x 365d 48950 4.0 1960 2.9 1401

3-00 2x 365d 34530 4.2 1461 2.9 1001

4-01 2x 272d 24300 3.6 866 2.8 673

5-00 2x 237d 23810 3.8 914 2.7 643

2-00 2x 295d 19740 3.4 666 2.7 535

8-06 2x 79d 11157 4.2 470 2.7 306 RIP

Milking: 117# 3.5F 2.5P SCC 373,000

• 4th 4-Yr-Old NE Fall Nat'l 2015

• 1st Jr 3-Yr-Old/Int Sr Champ NE Fall Nat'l 2014

62

ARETHUSA MCCUTCHEN TORI

840003137803055 99%RHA-I

Born: March 2, 2018 • Herd No. 786

Sire: **De-Su BKM Mccutchen 1174-ET**

Dam: **Ms Taras Tijuana** (Sells as Lot 64)

Fresh: March 16, 2020

2nd & 3rd Dams

U-Of-D Stormatic 876-ET EX-90 EX-MS

4-04 2x 365d 32540 3.3 1065 2.9 954

3-03 2x 321d 25680 2.4 627 3.1 800

U-Of-D Roy 696 VG-87 VG-MS

3-04 2x 305d 27380 3.6 982 3.0 809

2-05 2x 302d 25090 3.5 889 2.9 735



ARETHUSA GOLDWYN VALERIE EX-92
MATERNAL SISTER TO LOT 63 & 64

63

ARETHUSA GS VAN INFINITY-ET

72026669 Excellent-90 EX-MS
 Born: April 4, 2012 • Herd No. 49
 4-06 2x 365d 42370 3.7 1576 3.2 1365
 5-10 2x 327d 36490 3.5 1266 3.3 1199
 6-11 2x 305d 34410 3.1 1067 3.2 1097
 3-05 2x 340d 29990 3.2 968 3.3 975
 2-04 2x 305d 19960 3.5 692 3.3 664
 Life: 1694d 166900 3.4 5728 3.3 5441
 • Sells Dry
 Due: June 30, 2020 to Avant-Garde Subban-ET
 250H014503

Full sisters to Infinity

Arethusa GS Van Ingrid-ET EX-93 2E

Arethusa GS Van Iris-ET EX-90

Maternal sisters to Infinity

Arethusa Absolute Yvonne EX-92

Arethusa Goldwyn Valerie EX-92

Arethusa Goldwyn Evita-ET EX-90 EX-MS

- *Nom. All-American Sr Milking Yrlg 2010*
- *4th Sr Milking Yrlg International 2010*
- *1st Sr Milking Yrlg Eastern Fall Nat'l 2010*
- *2nd Fall Calf North-East Fall Nat'l 2009*

Sure-Can-Do Drake Vanessa EX-90

Toc-Farm Goldsun-ET

53990032335
 PTA -1393M -62F -33P 99R 4/20
 PTA -1.7PL 2.92SCS -3.3DPR 9.3%DCE
 PTA +1.12T +1.15UDC -.66FLC 99R 4/20
 GTPI +1416G

Sure-Can-Do Durham Vanity

131197093 Excellent-94 EX-MS 2E
 4-01 2x 365d 33320 3.8 1278 3.2 1055
 5-01 2x 365d 31480 4.0 1271 3.1 968
 2-05 2x 344d 24178 3.8 909 3.1 754
 • *HM All-American 4-Yr-Old 2005*
 • *3rd 4-Yr-Old Int'l Holstein Show 2005*

Regancrest Elton Durham-ET

2250783 Excellent-90 *TR *CV
 PTA -1133M -74F -25P 99R 4/20
 PTA +.74T +.26UDC +.97FLC GTPI +1488G

Sure-Can-Do Storm Vanessa

121665236 Excellent-90 EX-MS
 3-01 2x 365d 30160 4.0 1205 3.1 936

ARETHUSA FARM



ARETHUSA GOLDWYN EVITA EX-90 EX-MS
MATERNAL SISTER TO LOTS 64 & 65

64

ARETHUSA AMB VANESSA-ET

72279465 Excellent-93 EX-MS 2E
Born: March 16, 2016 • Herd No. 27
3-11 2x 365d 42900 4.3 1837 3.1 1334
5-05 2x 365d 37340 4.1 1529 3.2 1213
6-09 2x 295d 36560 3.7 1355 2.8 1041
2-11 2x 305d 24260 3.9 942 3.1 762
7-08 2x 98d 9506 4.0 379 3.3 316 RIP
Fresh: December 3, 2019

Bred: April 2, 2020 to Brenland Denver
94H018518

Maternal sisters to Vanessa

Arethusa GS Van Ingrid-ET EX-93 2E

Arethusa GS Van Iris-ET EX-90

Arethusa Absolute Yvonne EX-92

Arethusa Goldwyn Valerie EX-92

Arethusa Goldwyn Evita-ET EX-90 EX-MS

- *Nom. All-American Sr Milking Yrlg 2010*
- *4th Sr Milking Yrlg International 2010*
- *1st Sr Milking Yrlg Eastern Fall Nat'l 2010*
- *2nd Fall Calf North-East Fall Nat'l 2009*

Sure-Can-Do Drake Vanessa EX-90

Ernest-Anthony Ambition-ET

138013639
PTA -286M +38F +3P 96R 12/19
PTA -.6PL 3.03SCS -3.2DPR 7.6%DCE
PTA +1.76T +.07UDC +1.25FLC 94R 12/19
GTPI +1723G

Sure-Can-Do Durham Vanity

131197093 Excellent-94 EX-MS 2E
4-01 2x 365d 33320 3.8 1278 3.2 1055
5-01 2x 365d 31480 4.0 1271 3.1 968
2-05 2x 344d 24178 3.8 909 3.1 754
• *HM All-American 4-Yr-Old 2005*
• *3rd 4-Yr-Old Int'l Holstein Show 2005*

Regancrest Elton Durham-ET

2250783 Excellent-90 *TR *CV
PTA -1133M -74F -25P 99R 4/20
PTA +.74T +.26UDC +.97FLC GTPI +1488G

Sure-Can-Do Storm Vanessa

121665236 Excellent-90 EX-MS
3-01 2x 365d 30160 4.0 1205 3.1 936

PEDIGREE & PRODUCTION SALE



SURE-CAN-DO DURHAM VANITY EX-94 EX-MS 2E
DAM OF LOT 65
2ND DAM OF LOTS 66 & 67



ARETHUSA TARTAN INDIGO-TW
SELLS AS LOT 66

65

ARETHUSA GS VAN INGRID-ET

72026668 Excellent-93 EEVEE 2E
 Born: April 2, 2012 • Herd No. 48
 5-02 2x 359d 43530 3.0 1318 3.0 1320
 3-09 2x 365d 40130 4.1 1640 3.0 1192
 6-04 2x 359d 39320 2.7 1073 3.0 1190
 2-04 2x 365d 24420 4.5 1103 3.3 796
 7-06 2x 131d 26257 3.6 940 2.7 712 RIP
 Fresh: October 31, 2019
 Milking: 126# 4.0F 2.8P SCC 14,000
 Bred: March 1, 2020 to Woodcrest King Doc
 250H012961

Toc-Farm Goldsun-ET

53990032335
 PTA -1393M -62F -33P 99R 4/20
 PTA -1.7PL 2.92SCS -3.3DPR 9.3%DCE
 PTA +1.12T +1.15UDC -.66FLC 99R 4/20
 GTPI +1416G

Sure-Can-Do Durham Vanity

131197093 Excellent-94 EX-MS 2E
 4-01 2x 365d 33320 3.8 1278 3.2 1055
 5-01 2x 365d 31480 4.0 1271 3.1 968
 2-05 2x 344d 24178 3.8 909 3.1 754
 • HM All-American 4-Yr-Old 2005
 • 3rd 4-Yr-Old Int'l Holstein Show 2005

Regancrest Elton Durham-ET

2250783 Excellent-90 *TR *CV
 PTA -1133M -74F -25P 99R 4/20
 PTA +.74T +.26UDC +.97FLC GTPI +1488G

Sure-Can-Do Storm Vanessa

121665236 Excellent-90 EX-MS
 3-01 2x 365d 30160 4.0 1205 3.1 936

66

ARETHUSA TARTAN INDIGO-TW

840003137803037
 Born: June 16, 2017 • Herd No. 768
 2-03 2x 166d 13467 3.4 452 2.9 387 RIP
 Fresh: September 26, 2019
 Milking: 68# 3.9F 3.0P SCC 23,000
 Sire: **Ernest-Anthony Tartan** (Shottle X Tabitha EX-95)
 Dam: **Arethusa GS Van Ingrid-ET**
 Due: August 25, 2020 to Blondin Last Night 799H00010 Or
 Oh-River-Syc Crushabull-ET 777H011127

ARETHUSA TARTAN IVORY-TW

840003137803038
 Born: June 16, 2017 • Herd No. 769
 2-03 2x 160d 11427 3.7 422 2.9 337 RIP
 Fresh: October 2, 2019
 Milking: 61# 4.1F 3.1P SCC 132,000
 Sire: **Ernest-Anthony Tartan** (Shottle X Tabitha EX-95)
 Dam: **Arethusa GS Van Ingrid-ET**
 Due: September 2, 2020 to Milksource Cheers 94H019074

Full sister to Ingrid

Arethusa GS Van Iris-ET EX-90

Maternal sisters to Ingrid

Arethusa Goldwyn Evita-ET EX-90 EX-MS

- Nom. All-American Sr Milking Yrlg 2010
- 4th Sr Milking Yrlg International 2010
- 1st Sr Milking Yrlg Eastern Fall Nat'l 2010
- 2nd Fall Calf North-East Fall Nat'l 2009

Arethusa Absolute Yvonne EX-92

Sure-Can-Do Drake Vanessa EX-90

Arethusa GS Van Infinity-ET EX-90

67

ARETHUSA FARM

68

ARETHUSA DOC ISABEL

840003210910897 99%RHA-I
Born: October 31, 2019 • Herd No. 842

Woodcrest King Doc

840003132417775 99%RHA-I EX-90*TR*TP*TC*TY*TV*TL
PTA +1318M +60F +43P 92R 4/20
PTA +0.2PL 3.02SCS -0.1DPR 7.8%DCE
PTA +3.10T +2.23UDC +1.91FLC 87R 4/20
GTPI +2690G

Arethusa GS Van Ingrid-ET

72026668 Excellent-93 EEVEE 2E
5-02 2x 359d 43530 3.0 1318 3.0 1320
3-09 2x 365d 40130 4.1 1640 3.0 1192
6-04 2x 359d 39320 2.7 1073 3.0 1190
2-04 2x 365d 24420 4.5 1103 3.3 796
7-06 2x 131d 26257 3.6 940 2.7 712 RIP

2nd Dam

Sure-Can-Do Durham Vanity EX-94 EX-MS 2E

4-01 2x 365d 33320 3.8 1278 3.2 1055
5-01 2x 365d 31480 4.0 1271 3.1 968
• HM All-American 4-Yr-Old 2005
• 3rd 4-Yr-Old Int'l Holstein Show 2005

3rd Dam

Sure-Can-Do Storm Vanessa EX-90 EX-MS

3-01 2x 365d 30160 4.0 1205 3.1 936

69

ARETHUSA DOC IRIS-TW

840003137803075 99%RHA-I
Born: September 1, 2018 • Herd No. 806

Due: August 2, 2020 to Butz-Butler Atwood Brady-ET
76H00639

Woodcrest King Doc

840003132417775 99%RHA-I EX-90*TR*TP*TC*TY*TV*TL
PTA +1318M +60F +43P 92R 4/20
PTA +0.2PL 3.02SCS -0.1DPR 7.8%DCE
PTA +3.10T +2.23UDC +1.91FLC 87R 4/20
GTPI +2690G

Arethusa GS Van Ingrid-ET

72026668 Excellent-93 EEVEE 2E
5-02 2x 359d 43530 3.0 1318 3.0 1320
3-09 2x 365d 40130 4.1 1640 3.0 1192
6-04 2x 359d 39320 2.7 1073 3.0 1190
2-04 2x 365d 24420 4.5 1103 3.3 796
7-06 2x 131d 26257 3.6 940 2.7 712 RIP

2nd Dam

Sure-Can-Do Durham Vanity EX-94 EX-MS 2E

4-01 2x 365d 33320 3.8 1278 3.2 1055
5-01 2x 365d 31480 4.0 1271 3.1 968
• HM All-American 4-Yr-Old 2005
• 3rd 4-Yr-Old Int'l Holstein Show 2005

3rd Dam

Sure-Can-Do Storm Vanessa EX-90 EX-MS

3-01 2x 365d 30160 4.0 1205 3.1 936

70

ARETHUSA DOC IVY-TW

840003137803076 99%RHA-I
Born: September 1, 2018 • Herd No. 807

Due: August 2, 2020 to Mr Mogul Delta 203H01468
(Sexed Semen)

Woodcrest King Doc

840003132417775 99%RHA-I EX-90*TR*TP*TC*TY*TV*TL
PTA +1318M +60F +43P 92R 4/20
PTA +0.2PL 3.02SCS -0.1DPR 7.8%DCE
PTA +3.10T +2.23UDC +1.91FLC 87R 4/20
GTPI +2690G

Arethusa GS Van Ingrid-ET

72026668 Excellent-93 EEVEE 2E
5-02 2x 359d 43530 3.0 1318 3.0 1320
3-09 2x 365d 40130 4.1 1640 3.0 1192
6-04 2x 359d 39320 2.7 1073 3.0 1190
2-04 2x 365d 24420 4.5 1103 3.3 796
7-06 2x 131d 26257 3.6 940 2.7 712 RIP

2nd Dam

Sure-Can-Do Durham Vanity EX-94 EX-MS 2E

4-01 2x 365d 33320 3.8 1278 3.2 1055
5-01 2x 365d 31480 4.0 1271 3.1 968
• HM All-American 4-Yr-Old 2005
• 3rd 4-Yr-Old Int'l Holstein Show 2005

3rd Dam

Sure-Can-Do Storm Vanessa EX-90 EX-MS

3-01 2x 365d 30160 4.0 1205 3.1 936

PEDIGREE & PRODUCTION SALE



MURANDA S-MINT LULU-ET EX-91 EX-MS
2ND DAM OF LOTS 71 & 72

71

ARETHUSA AUSTIN LEAH

840003137803087 99%RHA-I
Born: January 3, 2019 • Herd No. 818

Due: November 17, 2020 to Walnutlawn Solomon-ET 200H010146

72

ARETHUSA AWESOME LEXXUS

840003210910907 *RC
Born: December 23, 2019 • Herd No. 852

Arethusa Doorman Austin-ET

840003141281726 99%RHA-I *TR *TL
PTA -409M +2F -10P 81R 12/19
PTA -.5PL 3.00SCS -1.5DPR 5.8%DCE
PTA +2.49T +.97UDC +1.39FLC 80R 12/19
GTPI +1661G

And

Luck-E Awesome-Red

72186769 *CV *TC *TY *TL
PTA -1964M -68F -63P 99R 4/20
PTA -2.1PL 3.18SCS -2.0DPR 11.9%DCE
PTA +2.08T +3.25UDC .88FLC 98R 4/20
GTPI +1385G

Arethusa Seaver Lexxus

840003137803015 Very Good-86 VG-MS
2-06 2x 249d 16110 4.5 726 3.4 545
3-06 2x 78d 7753 4.2 322 3.2 245 RIP

R-E-W Seaver-ET

137012381 *TR *TP *TY *TL
PTA -860M -50F -17P 99R 4/20
PTA +1.03T +.91UDC +.89FLC GTPI +1707G

Muranda S-Mint Lulu-ET

68662941 Excellent-91 EX-MS
4-05 2x 319d 34478 4.4 1501 3.1 1070
5-07 2x 308d 33876 3.8 1291 3.3 1125
3-03 2x 347d 29291 4.0 1181 3.2 939
2-01 2x 301d 19658 4.0 787 3.0 595

3rd Dam

Muranda Boliver Lady-ET EX-90 EX-MS DOM

3-07 2x 365d 39400 3.6 1427 3.2 1274
1-08 2x 365d 33290 4.1 1361 3.3 1098

4th Dam

Muranda BWM Larel-ET EX-95 2E GMD DOM

6-06 2x 365d 42200 3.9 1651 3.3 1392
Life: 1542d 131990 4.0 5244 3.4 4464

5th Dam

Beachlawn Blwood L Lilly-ET EX-93 2E GMD DOM

5-06 2x 365d 42710 3.8 1632 3.1 1331
Life: 1666d 125330 3.9 4930 3.4 4308

6th Dam

Beachlawn Bellwood Tammy-ET VG-86 GMD

2-00 2x 365d 37720 3.6 1369 3.3 1236
Life: 1260d 100430 3.7 3709 3.5 3521

7th Dam

Beachlawn Bell Pro Tammy-ET VG-89 DOM *TL

2-01 2x 365d 25970 4.1 1060 3.4 888

8th Dam

Beachlawn Bell Cleitus Pro EX-93 3E GMD DOM

4-11 2x 365d 32060 4.0 1286 3.4 1104
Life: 2627d 155400 4.6 7158 4.0 6207

9th Dam

Beachlawn Dutchoe Bell EX-92 2E GMD DOM

4-06 2x 365d 30350 4.0 1226 3.7 1112
Life: 2311d 132240 4.0 5324 3.7 4937

10th Dam

Beachlawn Dutchoe Elly VG-87

5-07 3x 305d 25300 3.3 829 3.2 798

ARETHUSA FARM



ROQUET JASMINE SANCHEZ-ET EX-95 EEEEE 2E
DAM OF LOT 73, 2ND DAM OF LOTS 74 & 75

73

ARETHUSA ATWOOD JAIDEN-ET

840003126029612 Excellent-92 EEEEE
Born: March 3, 2015 • Herd No. 691
3-05 2x 365d 46012 3.1 1441 3.4 1580
2-03 2x 330d 27707 3.7 1017 3.5 960
4-09 2x 93d 15983 4.1 657 3.2 505 RIP
Fresh: December 8, 2019
Milking: 178# 3.7F 3.1P SCC 19,000
Bred: April 2, 2020 to Avant-Garde-I Kd Summerfest-ET
94HO19370

74

ARETHUSA LEAP YEAR JULIET

840003137803077 99%RHA-I
Born: September 1, 2018 • Herd No. 808
Sire: **Vogue Leap Year-ET**
Dam: **Arethusa Atwood Jaiden-ET** (Sells as lot 77)
Due: June 20, 2020 to Avant-Garde Subban-ET
250HO14503

Maple-Downs-I G W Atwood-ET

8956379C Excellent-90 *TR *TP *TY *TV *TL
PTA -389M +11F -10P 99R 4/20
PTA -2.5PL 3.13SCS -4.6DPR 12.3%DCE
PTA +2.98T +1.68UDC +2.21FLC 99R 4/20
GTPI +1914G

Roquet Jasmine Sanchez-ET

106472331C Excellent-95 EEEEE 2E
4-01 2x 365d 41490 5.3 2189 3.0 1227
5-07 2x 365d 39820 3.8 1499 3.0 1208
Life: 1143d 122240 4.5 5492 3.1 3770
• 3rd 5-Yr-Old Royal 2015
• Nom All-Canadian Jr 3-Yr-Old 2013
• Res All-American Jr 2-Yr-Old 2012
• Res All-Canadian Jr 2-Yr-Old 2012

75

ARETHUSA SIDEKICK JAIDEN

840003210910905 99%RHA-I
Born: December 8, 2019 • Herd No. 850
Sire: **Walnutlawn Sidekick 777HO10992**
Dam: **Arethusa Atwood Jaiden-ET** (Sells as Lot 77)

Gen-Mark Stmatic Sanchez

134422312 Excellent-94 EEEE *TR *TP *TY *TV *TL
PTA +72M -39F -9P 99R 4/20
PTA +1.19T -.09UDC +.93FLC GTPI +1539G

Roquet Jordany Goldwyn

104298942C Excellent-90-CAN 3E
5-11 2x 365d 33772 4.1 1391 2.9 985
4-03 2x 365d 31901 3.9 1248 3.0 963
7-08 2x 365d 25547 4.3 1089 3.2 813
2-02 2x 345d 24678 3.8 944 3.0 730
3-03 2x 296d 23849 3.9 935 2.8 679
Life: 5 Lact 149370 4.0 6043 3.0 4541
• 2nd Sr. 2-Yr-Old Bassin De La Chaudiere 2009

3rd-8th Dams

Redbridge Integrity Joanne EX-93-CAN 3E
6-11 2x 365d 33929 3.9 1323 3.1 1056
Life: 6 Lact 151396 3.9 5955 3.2 4786
• 3rd Mature Cow Bassin De La Chaudiere 2007
Redbridge Prelude Jasmine EX-90-CAN 4E 6*
6-06 2x 365d 30657 3.6 1109 3.2 974
Life: 10 Lact 274021 3.9 10809 3.2 8821
Redbridge Tab Silver Shadow VG-88-CAN 7*
10-7 2x 341d 28208 3.8 1071 3.2 895
Life: 10 Lact 248943 3.7 9125 3.2 7989
• Grand Champion Woodstock Home 1993
• Res. Grand Champ Woodstock Home 1992
A Silver-Shade Sexy Kiss-ET VG-85
Life: 7 Lact 120281 4.5 5463 3.5 4239
Silver-Shade Astro Kismet EX-90 2E GMD DOM
Life: 8 Lact 135318 3.7 4947
Silver-Shade Donna Belle Sky VG-85
4-04 2x 369d 22661 3.9 880



ROQUET JASMINE SANCHEZ-ET EX-95 EEEEE 2E
DAM OF LOT 76

76

ARETHUSA SEAVER JEWEL

840003126029635 Very Good-88 EX-MS
Born: October 7, 2015 • Herd No. 714
2-10 2x 340d 19549 4.3 847 3.8 739
1-11 2x 288d 15741 4.6 731 3.7 589
4-00 2x 147d 13912 5.1 711 3.4 472 RIP
Fresh: October 15, 2019
Milking: 87# 5.1F 3.7P SCC 25,000

Bred: March 29, 2020 to Maple-Downs-I G W Atwood
7H010506

R-E-W Seaver-ET

137012381 *TR *TP *TY *TL
PTA -860M -50F -17P 99R 4/20
PTA -1.1PL 2.80SCS -.9DPR 9.9%DCE
PTA +1.03T +.91UDC +.89FLC 98R 4/20
GTPI +1707G

Roquet Jasmine Sanchez-ET

106472331C Excellent-95 EEEEE 2E
4-01 2x 365d 41490 5.3 2189 3.0 1227
5-07 2x 365d 39820 3.8 1499 3.0 1208
Life: 1143d 122240 4.5 5492 3.1 3770
• 3rd 5-Yr-Old Royal 2015
• Nom All-Canadian Jr 3-Yr-Old 2013
• Res All-American Jr 2-Yr-Old 2012
• Res All-Canadian Jr 2-Yr-Old 2012

Gen-Mark Stmatic Sanchez

134422312 Excellent-94 EEEE *TR *TP *TY *TV *TL
PTA +72M -39F -9P 99R 4/20
PTA +1.19T -.09UDC +.93FLC GTPI +1539G

Roquet Jordany Goldwyn

104298942C Excellent-90-CAN 3E
5-11 2x 365d 33772 4.1 1391 2.9 985
4-03 2x 365d 31901 3.9 1248 3.0 963
7-08 2x 365d 25547 4.3 1089 3.2 813
2-02 2x 345d 24678 3.8 944 3.0 730
3-03 2x 296d 23849 3.9 935 2.8 679
Life: 5 Lact 149370 4.0 6043 3.0 4541
• 2nd Sr. 2-Yr-Old Bassin De La Chaudiere 2009

3rd-8th Dams

Redbridge Integrity Joanne EX-93-CAN 3E

6-11 2x 365d 33929 3.9 1323 3.1 1056
Life: 6 Lact 151396 3.9 5955 3.2 4786

• 3rd Mature Cow Bassin De La Chaudiere 2007

Redbridge Prelude Jasmine EX-90-CAN 4E 6*

6-06 2x 365d 30657 3.6 1109 3.2 974
Life: 10 Lact 274021 3.9 10809 3.2 8821

Redbridge Tab Silver Shadow VG-88-CAN 7*

10-7 2x 341d 28208 3.8 1071 3.2 895
Life: 10 Lact 248943 3.7 9125 3.2 7989

• Grand Champion Woodstock Home 1993
• Res. Grand Champ Woodstock Home 1992

A Silver-Shade Sexy Kiss-ET VG-85

Life: 7 Lact 120281 4.5 5463 3.5 4239

Silver-Shade Astro Kismet EX-90 2E GMD DOM

Life: 8 Lact 135318 3.7 4947

Silver-Shade Donna Belle Sky VG-85

4-04 2x 369d 22661 3.9 880

ARETHUSA FARM

77

ARETHUSA DOORMAN RIHANNA

840003126029639 99%RHA-I Excellent-90 EX-MS

Born: October 29, 2015 • Herd No. 718

3-05 2x 343d 43257 3.7 1585 3.3 1424

2-04 2x 315d 19818 4.1 818 3.3 655

• Sells Dry

Due: June 16, 2020 to Maverick Crush 94H017998

Val-Bisson Doorman-ET

107281711C Excellent-90-CAN *TR *TP *TY *TL

PTA -453M +14F +10P 99R 4/20

PTA +.3PL 2.66SCS -2.0DPR 8.3%DCE

PTA +2.59T +1.61UDC +1.04FLC 99R 4/20

GTPI +2222G

Crovalley Gold Rapcity-ETS

11286919C Excellent-92 EX-MS

3-07 2x 365d 44820 3.2 1449 2.9 1320

2-02 2x 365d 25390 4.5 1155 3.1 788

Life: 1161d 128590 3.5 4558 3.0 3920

Braedale Goldwyn

10705608C GP-CAN EXTRA'05 GM 12/11 *TV *TL

PTA -756M -8F -14P 99R 4/20

PTA +.97T +.53UDC +.83FLC GTPI +1848G

Crovalley Mr Sam Ruby

7776756C Excellent-90-CAN 2E

4-11 2x 365d 30210 3.5 1052 3.0 906

2-04 2x 365d 28569 3.7 1063 3.1 884

3-10 2x 320d 26815 3.6 961 3.2 855

Life: 4 Lact 113696 3.6 4134 3.2 3582

ARETHUSA UNIX RAVEN

840003210910878 99%RHA-I

Born: April 2, 2019 • Herd No. 823

78

Croteau Lesperron Unix-ET

107567492C Excellent-90-CAN *TR *TP *TY *TV *TL

PTA +623M +33F +17P 98R 4/20

PTA +1.2PL 2.91SCS -.2DPR 7.4%DCE

PTA +2.37T +2.46UDC +.35FLC 97R 4/20

GTPI +2429G

Arethusa Doorman Rihanna

840003126029639 Excellent-90 EX-MS

3-05 2x 343d 43257 3.7 1585 3.3 1424

2-04 2x 315d 19818 4.1 818 3.3 655

Maternal sister to Ribanna

Crovalley Aftershock Rouille-ET EX-92

Val-Bisson Doorman-ET

107281711C Excellent-90-CAN *TR *TP *TY *TL

PTA -453M +14F +10P 99R 4/20

PTA +2.59T +1.61UDC +1.04FLC GTPI +2222G

Crovalley Gold Rapcity-ETS

11286919C Excellent-92 EX-MS

3-07 2x 365d 44820 3.2 1449 2.9 1320

2-02 2x 365d 25390 4.5 1155 3.1 788

Life: 1161d 128590 3.5 4558 3.0 3920

Full sister to Rapcity

Crovalley Gold Rackcity-ET EX-93-CAN 2E

Crovalley Lauthority Realm-ET EX-93-CAN

Crovalley Goldwyn Rhapsody VG-88-CAN

3rd Dam

Craigcrest Aeroline Roxanna VG-86-CAN 3*

2-06 2x 365d 30214 4.3 1305 3.2 974

4th Dam

Hanoverhill-I Raider Reana VG-87-CAN 2*

4-04 2x 365d 34901 4.1 1433 3.0 1047

Life: 3 Lact 85270 4.1 3457 3.2 2740

5th Dam

Miss Hanover-Hill-R T Roxe EX-95-JPN 4*

5-07 2x 365d 31856 3.9 1228 3.3 1049

Life: 3 Lact 78376 4.0 3133 3.4 2648

6th Dam

Hanover-Hill Sheik M Roxe ET VG-87-CAN GMD DOM

6-06 3x 365d 31929 4.3 1369 3.4 1093

Life: 4 Lact 116138 4.3 4996 2.8 3229

7th Dam

Mil-R-Mor Roxette EX-90 EEEV GMD DOM

Life: 2150d 121417 4.7 5725

8th Dam

C Glenridge Citation Roxy EX-97 4E GMD

Life: 3620d 209784 4.5 9471

'Queen of the Breed'

9th Dam

C Norton Court Model Vee EX-90

Life: 4183d 218629 3.9 8581

• All-American Produce of Dam 1977 - 1979

• Grand Champion Brandon Show 1969

10th Dam

Norton Court Reflection Val VG-85 5*

Life: 14 Lact 249583 3.7 9295

3rd-11th Dams

Crovalley Mr Sam Ruby EX-90-CAN 2E

4-11 2x 365d 30210 3.5 1052 3.0 906

Life: 4 Lact 113696 3.6 4134 3.2 3582

Craigcrest Aeroline Roxanna VG-86-CAN 3*

2-06 2x 365d 30214 4.3 1305 3.2 974

Hanoverhill-I Raider Reana VG-87-CAN 2*

4-04 2x 365d 34901 4.1 1433 3.0 1047

Life: 3 Lact 85270 4.1 3457 3.2 2740

Miss Hanover-Hill-R T Roxe EX-95-JPN 4*

5-07 2x 365d 31856 3.9 1228 3.3 1049

Life: 3 Lact 78376 4.0 3133 3.4 2648

Hanover-Hill Sheik M Roxe ET VG-87-CAN GMD DOM

6-06 3x 365d 31929 4.3 1369 3.4 1093

Life: 4 Lact 116138 4.3 4996 2.8 3229

Mil-R-Mor Roxette EX-90 EEEV GMD DOM

Life: 2150d 121417 4.7 5725

C Glenridge Citation Roxy EX-97 4E GMD

Life: 3620d 209784 4.5 9471

'Queen of the Breed'

C Norton Court Model Vee EX-90

Life: 4183d 218629 3.9 8581

• All-American Produce of Dam 1977 - 1979

• Grand Champion Brandon Show 1969

Norton Court Reflection Val VG-85 5*

Life: 14 Lact 249583 3.7 9295



JO-CLAR ADVENT PANSY-RED-ET EX-90 EX-MS 3E
DAM OF LOT 79

79

Arethusa Boston-Red

73724487 *TL
PTA -1079M -29F -14P 81R 4/20
PTA +0.1PL 3.06SCS +1.2DPR 10.4%DCE
PTA +1.71T +1.44UDC +1.14FLC 80R 4/20
GTPI +1925G

Jo-Clar Advent Pansy-Red-ET

138537070 Excellent-90 EX-MS 3E
6-11 2x 365d 39430 5.1 2012 3.0 1198
9-08 2x 293d 36540 3.3 1189 3.0 1111
8-08 2x 310d 35320 3.7 1317 3.2 1125
5-10 2x 305d 32610 3.7 1221 3.2 1032
4-05 2x 365d 30830 4.4 1351 3.1 952
1-11 2x 365d 22000 3.9 859 3.4 757
Life: 2212d 210930 4.1 8692 3.2 6746

Maternal sisters to Pansy

Jo-Clar Sept Storm Pearl-ET EX-92

Jo-Clar Sept Storm Polly-ET EX-92

ARETHUSA BOSTN PARSONIA-RED

840003137802992 Excellent-92 EX-MS
Born: January 7, 2016 • Herd No. 723
2-07 2x 280d 18897 4.3 809 3.6 680
3-06 2x 268d 25327 3.8 964 3.5 875 RIP
Fresh: July 25, 2019
Milking: 78# 4.0F 3.5P SCC 13,000

Due: July 13, 2020 to Lucky-E Awesome-Red
(Sexed Semen) 76H01603

KHW Kite Advent-Red-ET

133002953 Excellent-94 *TV *TL *TD
PTA -2024M -17F -27P 99R 4/20
PTA +2.14T +2.62UDC +1.57FLC GTPI +1531G

Any-Day Rubens Poppy-ET

131695890 Excellent-90 2E GMD DOM *RC *TV *TL
4-02 2x 365d 40261 4.6 1869 3.5 1412"
6-07 2x 305d 31993 4.0 1267 3.3 1056
2-03 2x 365d 29520 4.4 1308 3.6 1048
Life: 1712d 140030 4.5 6238 3.6 4999

Maternal sister to Poppy

Any-Day Durham Pansey-ET EX-93 EX-MS *CV

4-08 2x 365d 38930 3.5 1368 3.1 1109
• Numerous sons in AI • Locator List Cow

3rd Dam

Jo-Clar Jess Patsy EX-93 2E DOM

3-06 2x 277d 25720 5.0 1277 3.5 910
Life: 1497d 107460 4.7 5093 3.6 3890

• Res Jr All-American Sr 3-Yr-Old Cow 1998

4th Dam

Jo-Clar Lincoln Patches EX-90 EEEEV

7-08 2x 365d 32060 4.2 1361 3.5 1127
Life: 2224d 179640 4.2 7485 3.4 6141

5th Dam

Jo-Clar Inspiration Penelope EX-90 2E

5-09 2x 365d 27590 3.7 1026 3.4 937
Life: 1644d 123180 4.0 4902 3.4 4135

6th Dam

Jo-Clar Mattador Pixie EX-90 GMD DOM

6-11 2x 365d 36140 3.3 1191 2.8 1015
Life: 2872d 249150 3.2 8081 3.0 7575

7th Dam

Jo-Clar Bell Patsy VG-86 EX-MS

5-05 2x 316d 27670 3.9 1076 3.2 877

8th Dam

Jo-Clar Marvex Pauline VG-87

4-05 2x 301d 21690 4.1 889 3.3 720

ARETHUSA FARM



ARETHUSA VERONICAS COMET-ET EX-95
DAM OF LOT J1



ELLIOTTS BLACKSTON CHARLOTTE EX-94
MATERNAL SISTER TO LOT J1

Comet

- Nom ABA All-American Aged Cow 2013
- Unanimous All-American 5-Yr-Old 2011
- Member of Unanimous All-Amer Produce of Dam
- Member of Unanimous All-Amer Best 3 Females
- Grand Champ NYSS 2011
- Res ABA All-American 4-Yr-Old 2010
- All-Canadian 4-Yr-Old 2010
- Grand Champ Royal 2010
- Grand Champ Eastern States 2010
- All-Canadian Sr 3-Yr-Old 2009
- 1st Sr 3-Yr-Old/Res & Grand RAWF 2009
- Nom All-American Produce of Dam 2009

J1

ARETHUSA GENTRY CHAVONNE-ET

840003200653213
Born: December 5, 2019

Rapid Bay Indiana Gentry

105762718
USDA 4/20 93%R -1922M .08% -78F .00%P -70P

Arethusa Veronicas Comet-ET

114891985 Excellent-95%
4-06 2x 305d 19970 6.5 1292 3.6 710
7-05 2x 305d 19230 5.5 1063 3.2 623
3-07 2x 305d 18100 6.0 1077 3.6 652
6-01 2x 305d 17290 6.3 1087 3.5 599

Piedmont Nadine Furor

10030510 11JE671
CDCB 12/19 99%R -2278M .36% -45F .14% -57P
AJCA 12/19 GPTAT 99%R +15.8 GJPI 99%R -90

Huronion Centurion Veronica 20J

10206465 Excellent-97 4E
2-11 2x 305d 22605 5.1 1142 4.1 928
4-09 2x 305d 21352 5.6 1205 3.9 835
10-4 2x 305d 21270 5.0 1058 3.6 767
6-08 2x 305d 20819 5.5 1147 3.8 794
11-9 2x 305d 19020 5.4 1024 3.5 673
8-06 2x 305d 18810 5.8 1089 3.9 732
2-00 2x 305d 17625 5.5 977 4.1 715

- ABA All American Aged Cow 2008
- Grand Champion World Dairy Expo 2004-2006
- Res. Grand Champ World Dairy Expo 2002-2007
- National Grand Champ All American 2004
- Grand & Supr Champ PA All American 2005-2006
- Supreme Champion World Dairy Expo 2006

Maternal sister to J10

Elliotts Blackston Charlotte EX-94

- Res Grand Champ WDE 2017
- HM Grand Champ RAWF 2017
- ABA All-American 5-Yr-Old 2017
- Res Jersey Jug Futurity Winner All-Am 2015
- Nom All-Canadian Sr 2-Yr-Old 2014

Elliotts Cosmo Action-ET EX-93

3-04 2x 305d 23470 5.4 1260 3.6 839
• ABA All-American Sr 3-Yr-Old 2014
• 1st Sr 3-Yr-Old/ HM Int Champ WDE 2014
• 1st Sr 3-Yr-Old/Res Grand PA All-American 2014
• Nom ABA All-American Sr 2-Yr-Old 2013
• 3rd Sr 2-Yr-Old WDE 2013

Arethusa Comets Capri EX-93

Elliotts Gold Confetti EX-92

Elliotts Corona Action EX-91

- 3rd Sr 2-Yr-Old PA All-American 2013

Elliotts Faxon Comical EX-91

Elliotts Exciting Chamboard EX-90

3rd-8th Dams

Genesis Renaissance Vivianne VG-87 2*

5-00 2x 305d 12108 4.2 514 3.8 461

Genesis Juno Virginia 4E-91

Life: 107730 4.7 5062 3.9 4210

Swissbell F Veronica SUP EX 1

Life: 3612d 133058 4.3 5760 4.0 5293

Swissbell Ella Virginia SUP EX-90

Swissbell Virginia SUP EX-90

Life: 5006d 149770 5.8 8670

- Dam of 4 EX Daughters

Belmont Jester Virginia SUP EX



ARETHUSA RESPONSE VIVID-ET EX-96
DAM OF LOT J2 & J3

J2

Bushlea Faxon-ET

587022 200JE08141
USDA 4/20 88%R -812M +.10% -19F +.00%P -30P
AJCA 4/20 GPTAT 82%R -.10 GJPI 82%R -50

Arethusa Response Vivid-ET

116023067 Excellent-96%
6-00 2x 305d 22670 6.5 1482 3.5 790
7-04 2x 305d 21520 4.8 1023 3.7 788
4-01 2x 305d 20280 5.8 1175 3.6 729
9-04 2x 305d 20150 4.8 969 3.6 722
2-11 2x 305d 19180 5.4 1027 3.3 640
1-10 2x 305d 14940 6.4 958 3.6 536
• All-Canadian Mature Cow 2014
• ABA All-American Aged Cow 2014
• Supreme Champion Royal 2014
• ABA All-American 4-Yr-Old 2012
• Grand Champ WDE & Royal 2012
• ABA All-American Jr 3-Yr-Old 2011
• ABA Res All-American Jr 2-Yr-Old 2010

Full sisters to Vivid

Arethusa Response Vanity EX-93
Arethusa Response View-ET EX-92

ARETHUSA FAXON VIENNA-ET

118097075 Excellent-93%
Born: April 17, 2012 • Herd No. 129
5-11 2x 365d 30444 5.1 1529 3.6 1086
3-10 2x 181d 22850 4.3 979 3.5 809
2-11 2x 278d 18575 4.7 870 3.5 653
1-10 2x 313d 15214 6.9 1055 3.4 518
7-04 2x 186d 12893 4.8 623 3.5 456 RIP
Fresh: September 6, 2019
Milking: 57# 5.8F 3.7P SCC 33,000
Due: September 24, 2020 to SV Jade Hired Gun
94JE03720

Hollylane R Response-ET

660024
USDA 4/20 99%R -1940M +.08% -87F .08% -78P
AJCA 4/20 GPTAT 99%R +0.00 GJPI 99%R +0

Huronia Centurion Veronica 20J

10206465CAN Excellent-97 4E
2-11 2x 365d 25815 5.1 1272 4.1 1054
4-09 2x 365d 24568 5.7 1399 4.0 977
6-08 2x 365d 24442 5.6 1380 3.9 955
• ABA All American Aged Cow 2008
• Grand Champion World Dairy Expo 2004-2006
• Res. Grand Champ World Dairy Expo 2002-2007
• National Grand Champ All American 2004
• Grand & Supr Champ PA All American 2005-2006
• Supreme Champion World Dairy Expo 2006

Maternal sisters to Vienna

Arethusa HG Victoria-ET EX-94
• ABA All-American Jr 2-Yr-Old 2014
Arethusa Socrates Vibe-ET EX-93
Arethusa Impression Villeneuve EX-93
Arethusa Impression Ventisquero-ET EX-92
Arethusa Justice Vivianne EX-92
Arethusa Impression Veramonte-ET EX-91
Arethusa HG Vanguish EX-91
Arethusa Vita-ET EX-91
Arethusa Premier Ventosa VG-89
• 1st Sr 2-Yr-Old Harrisburg 2019
• Int & Grand Champion Harrisburg 2019
• 3rd Sr 2-Yr-Old WDE 2019

3rd-8th Dams

Genesis Renaissance Vivianne VG-87 2*
5-00 2x 305d 12108 4.2 514 3.8 461
Genesis Juno Virginia SUP EX-92 6E 4*
6-06 2x 305d 16539 4.7 772 3.8 628
Life: 7 Lacs 107730 4.7 5062 3.9 4210
Swissbell F Veronica SUP EX 1
13-5 2x 305d 13854 4.5 619 3.9 536
Life: 2612d 133058 4.3 5760 4.0 5293
Swissbell Eli Virginia SUP EX-90
5-03 2x 305d 11931 4.9 589
Swissbell Virginia SUP EX-90
7-06 2x 305d 13263 5.9 787
Life: 5006d 149770 5.8 8670
Dam of four EX daughters
Belmont Jester Virginia SUP EX
8-02 2x 305d 12059 5.6 679

ARETHUSA FARM



ARETHUSA PREMIER VENTOSA VG-89
MATERNAL SISTER TO LOTS J2 & J3

J3

Bridon Excitation

8572453

USDA 4/20 99%R -1116M .11% -61F .03%P -58P

AJCA 4/20 GPTAT 99%R +0.20 GJPI 99%R -125

Arethusa Response Vivid-ET

116023067 Excellent-96%

6-00 2x 305d 22670 6.5 1482 3.5 790

7-04 2x 305d 21520 4.8 1023 3.7 788

4-01 2x 305d 20280 5.8 1175 3.6 729

9-04 2x 305d 20150 4.8 969 3.6 722

2-11 2x 305d 19180 5.4 1027 3.3 640

1-10 2x 305d 14940 6.4 958 3.6 536

- All-Canadian Mature Cow 2014
- ABA All-American Aged Cow 2014
- Supreme Champion Royal 2014
- ABA All-American 4-Yr-Old 2012
- Grand Champ WDE & Royal 2012
- ABA All-American Jr 3-Yr-Old 2011
- ABA Res All-American Jr 2-Yr-Old 2010

Full sisters to Vivid

Arethusa Response Vanity EX-93

Arethusa Response View-ET EX-92

ARETHUSA EXCITATION VITA-ET

118744034 Excellent-91%

Born: September 14, 2013 • Herd No. 1680

2-06 2x 365d 17979 5.5 951 3.6 648

5-01 2x 293d 15712 5.0 785 3.7 584

4-01 2x 285d 15700 5.7 896 3.6 573

6-01 2x 137d 8406 5.7 475 3.4 287 RIP

Fresh: October 25, 2019

Milking: 48# 4.8F 3.9P SCC 93,000

Due: December 22, 2020 to Guimo Joel ET
200JE00384

Hollylane R Response-ET

660024

USDA 4/20 99%R -1940M +.08% -87F .08% -78P

AJCA 4/20 GPTAT 99%R +0.00 GJPI 99%R +0

Huronion Centurion Veronica 20J

10206465CAN Excellent-97 4E

2-11 2x 365d 25815 5.1 1272 4.1 1054

4-09 2x 365d 24568 5.7 1399 4.0 977

6-08 2x 365d 24442 5.6 1380 3.9 955

- ABA All American Aged Cow 2008
- Grand Champion World Dairy Expo 2004-2006
- Res. Grand Champ World Dairy Expo 2002-2007
- National Grand Champ All American 2004
- Grand & Supr Champ PA All American 2005-2006
- Supreme Champion World Dairy Expo 2006

Maternal sisters to Vita

Arethusa HG Victoria-ET EX-94

- ABA All-American Jr 2-Yr-Old 2014

Arethusa Socrates Vibe-ET EX-93

Arethusa Impression Villeneuve EX-93

Arethusa Faxon Vienna-ET EX-93

Arethusa Impression Ventisquero-ET EX-92

Arethusa Justice Vivianne EX-92

Arethusa Impression Veramonte-ET EX-91

Arethusa HG Vanguish EX-91

Arethusa Premier Ventosa VG-89

- 1st Sr 2-Yr-Old Harrisburg 2019

- Int & Grand Champion Harrisburg 2019

- 3rd Sr 2-Yr-Old WDE 2019

3rd-8th Dams

Genesis Renaissance Vivianne VG-87 2*

5-00 2x 305d 12108 4.2 514 3.8 461

Genesis Juno Virginia SUP EX-92 6E 4*

6-06 2x 305d 16539 4.7 772 3.8 628

Life: 7 Lacs 107730 4.7 5062 3.9 4210

Swissbell F Veronica SUP EX 1

13-5 2x 305d 13854 4.5 619 3.9 536

Life: 2612d 133058 4.3 5760 4.0 5293

Swissbell Ell Virginia SUP EX-90

5-03 2x 305d 11931 4.9 589

Swissbell Virginia SUP EX-90

7-06 2x 305d 13263 5.9 787

Life: 5006d 149770 5.8 8670

Dam of four EX daughters

Belmont Jester Virginia SUP EX

8-02 2x 305d 12059 5.6 679



ARETHUSA VINTAGE TEQUILA-ET EX-91
SELLS AS LOT J4

J4

ARETHUSA VINTAGE TEQUILA-ET

840003125964487 Excellent-91%
Born: September 4, 2015 • Herd No. 10239
3-08 2x 293d 20734 5.7 1172 3.9 815
2-06 2x 344d 17688 5.9 1045 4.2 750
Fresh: May 22, 2019
Milking: 67# 7.2F 4.5P SCC 19,000

Due: September 2, 2020 to Enniskillen Engineer 401
224JE02479

Tower Vue Prime Tequila-ET

114816452 76JE156
CDCB 4/20 99%R -2087M .22% -59F .09% -59P
AJCA 4/20 GPTAT 99%R +1.10 GJPI 99%R -208

Elliotts Vivid Deluxe

115230253 Excellent-95%
7-04 2x 305d 28800 6.2 1779 3.6 1029
4-08 2x 305d 19530 4.7 922 3.5 684
5-11 2x 305d 18920 4.8 914 3.7 702
2nd 5-Year-Old PA All-American 2011
HM Mention Senior Champion PA All-American 2011

Maternal sisters to Deluxe

Elliotts Justice Vinca-ET EX-94
Elliotts Minister Votive-ET EX-90

Elliotts Renaissance Deluxe

111177435
Elliotts Golden Vista-ET
113947982 Excellent-95%
3-04 2x 365d 22399 6.7 1502 4.2 939
• *1st 100,000lb. Cow International Jersey Show 2012*
• *ABA All-American 100,000lb. Cow 2012*
• *Member All-American Produce of Dam 2012*
• *1st Aged Cow Eastern States Expo 2012*

3rd Dam

Huronica Centurion Veronica 20J EX-97 4E
2-11 2x 365d 25815 5.1 1272 4.1 1054
4-09 2x 365d 24568 5.7 1399 4.0 977
• *ABA All American Aged Cow 2008*
• *Grand Champion World Dairy Expo 2004-2006*
• *Res. Grand Champ World Dairy Expo 2002-2007*
• *National Grand Champ All American 2004*
• *Grand & Supr Champ PA All American 2005-2006*
• *Supreme Champion World Dairy Expo 2006*

4th-9th Dams

Genesis Renaissance Vivianne VG-87 2*
5-00 2x 305d 12108 4.2 514 3.8 461
Genesis Juno Virginia SUP EX-92 6E 4*
6-06 2x 305d 16539 4.7 772 3.8 628
Life: 7 Lacs 107730 4.7 5062 3.9 4210
Swissbell F Veronica SUP EX 1
13-5 2x 305d 13854 4.5 619 3.9 536
Life: 2612d 133058 4.3 5760 4.0 5293
Swissbell Ell Virginia SUP EX-90
5-03 2x 305d 11931 4.9 589
Swissbell Virginia SUP EX-90
7-06 2x 305d 13263 5.9 787
Life: 5006d 149770 5.8 8670
Dam of four EX daughters
Belmont Jester Virginia SUP EX
8-02 2x 305d 12059 5.6 679

ARETHUSA FARM



RADLIFF PRICE ALICIA EX-95
DAM OF LOT J5

J5

RADLIFF EXCITATION ALANA-ET

840003125089301

Born: September 5, 2014 • Herd No. 1148

4-01 2x 350d 22828 5.1 1153 3.9 892

2-07 2x 362d 20149 6.0 1219 3.8 765

5-03 2x 90d 8215 5.1 423 3.5 287 RIP

Fresh: December 11, 2019

Milking: 81# 4.7F 3.6P SCC 29,000

Bred: April 18, 2020 to River Valley Venus V I P-ET
777JE10003

Bridon Excitation

8572453

USDA 4/20 99%R -1116M .11% -61F .03%P -58P

AJCA 4/20 GPTAT 99%R +0.20 GJPI 99%R -125

Radliff Price Alicia

114215765 Excellent-95%

3-05 2x 305d 20880 4.9 1014 3.6 760

- *Nat'l Grand & Supreme Champion NAILE 2010*
- *All American 5-Yr-Old 2010*
- *1st 5-Year-Old, BU & BBO All Am Jersey Show 2010*
- *1st 4-Yr-Old Grand & Sup Champ All-Am Show 2009*
- *Reserve Grand Champion WDE 2009*
- *All-American Sr. 3-Yr-Old 2008*
- *Int & Grand Champion All American 2008*
- *1st Sr. 3-Year-Old, BU, BB&O All American 2008*
- *Res. All-American Sr. 2-Year-Old 2007*
- *Nom. All American Fall Yearling in Milk 2006*

Radliff Jade Price

112915838

Bridon Ethan Almond

8423012C Excellent-91%

5-05 2x 305d 20260 5.3 1071 3.5 716

3-01 2x 289d 12380 5.3 653 3.8 468

4-00 2x 211d 10980 5.9 651 3.7 401

Maternal Sister to Almond

Radliff Res Raizel-ET EX-93

3rd Dam

Rozeview Dorie D Rachel EX-95

4-07 2x 305d 19470 4.2 818 3.6 704

4th Dam

Rozeview Master Robin VG-85

8-00 2x 305d 14639 4.5 661 3.9 584

5th Dam

Rozeview Jude Revin EX-90-CAN 2E

7-09 2x 305d 16964 4.6 849 3.7 628



ARETHUSA BRAIDEN NADIA EX-91
SELLS AS LOT BS1, DAM OF LOTS BS2-BS4

NORA!

- All-American Component Merit Cow 2007
 - Grand Champion Central National Show 2007
 - HM All-American Aged Cow 2006
 - HM All-American 5-Yr-Old Cow 2004
 - All-American Jr 3-Yr-Old Cow 2002
 - Grand Champion Western National 2002
 - 1st Jr 3-Yr-Old Cow Central National 2002
 - Nom All-American Jr 2-Yr-Old Cow 2001
 - 1st Jr 2-yr-Old Cow Western National 2001
 - Grand Champion Western National 2001
- Maternal sisters to Nikeisha

Jo-Dee Prelude Nancy E94 94-MS

4-00 2x 305d 27290 4.0 1120 3.4 963

- Nom All-American 4-Yr-Old Cow 2009
- Res All-American Jr 3-Yr-Old Cow 2008
- 1st Jr 3-Yr-Old Cow Western National 2008
- 2nd Jr 3-Yr-Old Cow & BU Central National 2008
- Res All-American Summer Yrlg Heifer 2006
- 1st Summer Yrlg Heifer Western National 2006

Jo-Dee Jade Nora Nillawafer EX-93 93-MS 2E

Jo-Dee Wonderment Nuclear ET EX-92 2E

• Nom All-American 5-Yr-Old 2015

• Nom All-American Sr 2-Yr-Old 2012

Jo-Dee Premium Nickelback ET EX-91 EX-MS

Jo-Dee Premium Nadia ET EX-91 91-MS

Jo-Dee Starbuck Nori ET EX-91 EX-MS

Jo-Dee Denmark Norabella ET EX-90 EX-MS

Valligrove No No Nanette ET EX-90 92-MS

Jo-Dee Starbuck Noticeable ET EX-90 EX-MS

Jo-Dee Starbuck Normandy ET EX-90 92-MS

Jo-Dee Denmark Nookie ET EX-90 EX-MS

Jo-Dee Wonderment Nuzzle ET EX-90

Jo-Dee Premium Nibbles ET EX-90

3rd Dam

Toulumne Ensign Noel E90-2E

3-05 2x 302d 31440 3.5 1090 3.4 1056

5-10 2x 365d 23000 3.7 854 3.0 698

- 1st Total Performance Western/Nat CA 2001

BS1

Blessing Tex Braiden ET

198435 Excellent-92

PPR -110 99%R PTAT +0.10 99%R 4/20

PTA -664M -47F -30P -262NMS 99%R (GEN)

PTA PL +1.8 SCS +2.87 DPR +0.6 SCE 7.1

Jo-Dee James Nikeisha ET

68119950

5/03 E91 E92 E91 E93 E91 E91 (4/15)

7-11 2x 339d 31890 4.0 1266 3.1 981

6-01 2x 305d 31640 4.2 1332 3.0 963

4-08 2x 305d 27250 5.3 1445 3.2 864

3-03 2x 304d 20980 4.1 868 3.2 674

• All-American Winter Yrlg 2011

• Jr Champ WDE 2011

• All-American Winter Calf 2010

• All-American Jr Best Three 2010

• 2 Time Jr Champ WDE 2010 & 2011

Full sister to Nikeisha

Jo-Dee James New York ET EX-90 EX-MS

ARETHUSA BRAIDEN NADIA

68152017

Born: March 14, 2013 • Herd No. 9004

5/10 E91 E92 E92 E90 E91 E90 (02/19)

4-01 2x 300d 26490 3.8 1010 3.3 863

5-05 2x 254d 19940 3.7 739 3.4 680

3-01 2x 267d 19300 4.2 812 3.2 618

2-01 2x 266d 15940 4.3 683 3.4 541

6-04 2x 213d 16583 4.2 691 3.4 566 RIP

Fresh: August 10, 2019

Milking: 61# 4.0F 3.5P SCC 162,000

• 2nd 4-Yr-Old Northeast Nat'l 2017

• 2nd Jr 3-Yr-Old Eastern States Expo 2016

• All-American Spring Yrlg 2014

• Res. Jr Champ WDE 2014

• 1st Spring Yrlg WDE 2014

Bred: April 7, 2020 to Hilltop Acres B Daredevil-ET

54BS00558

SCF Emory James

192909 Excellent-90

PPR -68 96%R PTAT -0.10 96%R 4/20

PTA -1213M -12F -28P -134NMS 96%R (GEN)

PTA PL -1.4 SCS +3.02 DPR +1.1

Valligrove Jetway Nora

891517

2E-E93 E 95 E94 E92 E91 E92 (02/07)

7-02 2x 365d 36260 3.6 1306 3.2 1162

5-00 2x 365d 32730 3.8 1257 3.2 1055

3-03 2x 353d 18340 4.1 758 3.2 590

Life: 2146d 166700 3.8 6371 3.3 5578

ARETHUSA FARM



JO-DEE JAMES NIKEISHA ET EX-91
2ND DAM OF LOT BS2

NORA!

- All-American Component Merit Cow 2007
- Grand Champion Central National Show 2007
- HM All-American Aged Cow 2006
- HM All-American 5-Yr-Old Cow 2004
- All-American Jr 3-Yr-Old Cow 2002
- Grand Champion Western National 2002
- 1st Jr 3-Yr-Old Cow Central National 2002
- Nom All-American Jr 2-Yr-Old Cow 2001
- 1st Jr 2-yr-Old Cow Western National 2001
- Grand Champion Western National 2001

Maternal sisters to Nikeisha

Jo-Dee Prelude Nancy E94 94-MS

4-00 2x 305d 27290 4.0 1120 3.4 963

- Nom All-American 4-Yr-Old Cow 2009
- Res All-American Jr 3-Yr-Old Cow 2008
- 1st Jr 3-Yr-Old Cow Western National 2008
- 2nd Jr 3-Yr-Old Cow & BU Central National 2008
- Res All-American Summer Yrlg Heifer 2006
- 1st Summer Yrlg Heifer Western National 2006

Jo-Dee Jade Nora Nillawafer EX-93 93-MS 2E

Jo-Dee Wonderment Nuclear ET EX-92 2E

- Nom All-American 5-Yr-Old 2015
- Nom All-American Sr 2-Yr-Old 2012

Jo-Dee Premium Nickelback ET EX-91 EX-MS

Jo-Dee Premium Nadia ET EX-91 91-MS

Jo-Dee Starbuck Nori ET EX-91 EX-MS

Jo-Dee Denmark Norabella ET EX-90 EX-MS

Valligrove No No Nanette ET EX-90 92-MS

Jo-Dee Starbuck Noticeable ET EX-90 EX-MS

Jo-Dee Starbuck Normandy ET EX-90 92-MS

Jo-Dee Denmark Nookie ET EX-90 EX-MS

Jo-Dee Wonderment Nuzzle ET EX-90

Jo-Dee Premium Nibbles ET EX-90

3rd Dam

Valligrove Jetway Nora 2E-E93

7-02 2x 365d 36260 3.6 1306 3.2 1162

Life: 2146d 166700 3.8 6371 3.3 5578

4th Dam

Toulumne Ensign Noel E90-2E

3-05 2x 302d 31440 3.5 1090 3.4 1056

5-10 2x 365d 23000 3.7 854 3.0 698

- 1st Total Performance Western/Nat CA 2001

BS2

ARETHUSA TANKBARK NIRVANA

68176648

Born: May 4, 2016 • Herd No. 10021

2-00 2x 365d 21954 4.6 1000 3.5 760

3-06 2x 99d 7752 4.0 310 3.2 251 RIP

Fresh: December 2, 2019

Milking: 74# 4.2F 3.3P SCC 35,000

Due: October 27, 2020 to La Rainbow Bfly Dynamite
14BS00393

Blessing Tex Braiden ET

198435 Excellent-92

PPR -110 99%R PTAT +0.10 99%R 4/20

PTA -664M -47F -30P -262NM\$ 99%R (GEN)

PTA PL +1.8 SCS +2.87 DPR +0.6 SCE 7.1

Jo-Dee James Nikeisha ET

68119950

5/03 E91 E92 E91 E93 E91 E91 (4/15)

7-11 2x 339d 31890 4.0 1266 3.1 981

6-01 2x 305d 31640 4.2 1332 3.0 963

4-08 2x 305d 27250 5.3 1445 3.2 864

3-03 2x 304d 20980 4.1 868 3.2 674

- All-American Winter Yrlg 2011

• Jr Champ WDE 2011

• All-American Winter Calf 2010

• All-American Jr Best Three 2010

• 2 Time Jr Champ WDE 2010 & 2011

Full sister to Nikeisha

Jo-Dee James New York ET EX-90 EX-MS

Pit-Crew Wonder Tanbark ET

68122966

PPR -30 98%R PTAT -0.30 98%R 4/20

PTA +572M +6F +15P -123NM\$ 98%R (GEN)

PTA PL -3.0 SCS +3.14 DPR -3.6 SCE 4.7

Arethusa Braiden Nadia

68152017

5/10 E91 E92 E92 E90 E91 E90 (02/19)

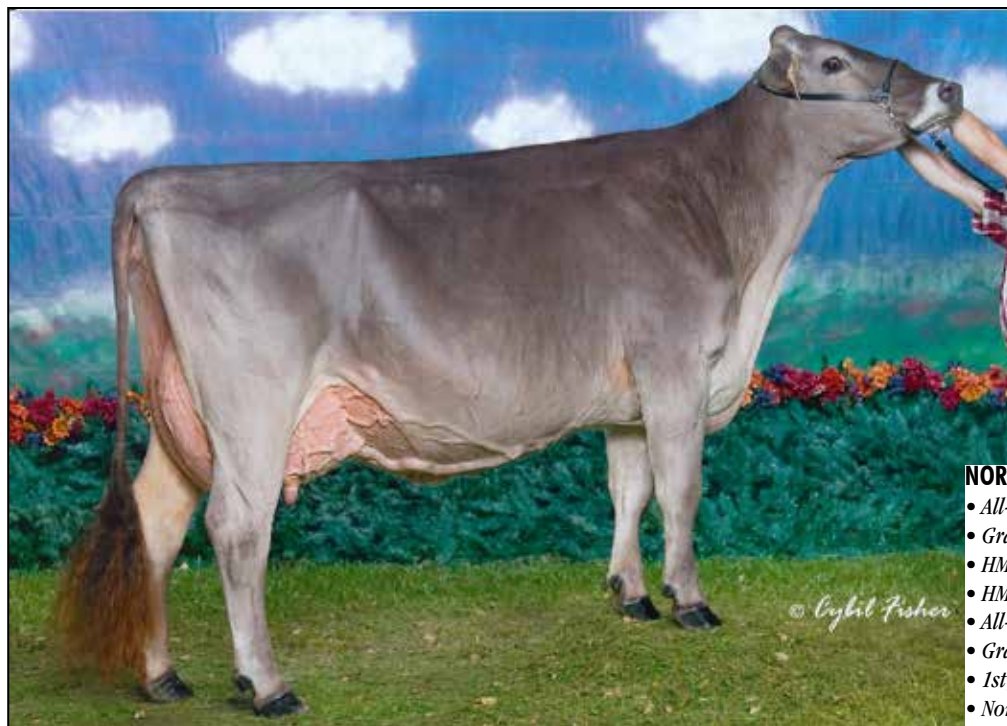
4-01 2x 300d 26490 3.8 1010 3.3 863

5-05 2x 254d 19940 3.7 739 3.4 680

3-01 2x 267d 19300 4.2 812 3.2 618

2-01 2x 266d 15940 4.3 683 3.4 541

- 2nd 4-Yr-Old Northeast Nat'l 2017
- 2nd Jr 3-Yr-Old Eastern States Expo 2016
- All-American Spring Yrlg 2014
- Res. Jr Champ WDE 2014
- 1st Spring Yrlg WDE 2014



VALLIGROVE JETWAY NORA EX-93 2E
3RD DAM OF LOT BS3

NORA!

- All-American Component Merit Cow 2007
- Grand Champion Central National Show 2007
- HM All-American Aged Cow 2006
- HM All-American 5-Yr-Old Cow 2004
- All-American Jr 3-Yr-Old Cow 2002
- Grand Champion Western National 2002
- 1st Jr 3-Yr-Old Cow Central National 2002
- Nom All-American Jr 2-Yr-Old Cow 2001
- 1st Jr 2-yr-Old Cow Western National 2001
- Grand Champion Western National 2001

Maternal sisters to Nikeisha

Jo-Dee Prelude Nancy E94 94-MS

4-00 2x 305d 27290 4.0 1120 3.4 963

- Nom All-American 4-Yr-Old Cow 2009
- Res All-American Jr 3-Yr-Old Cow 2008
- 1st Jr 3-Yr-Old Cow Western National 2008
- 2nd Jr 3-Yr-Old Cow & BU Central National 2008
- Res All-American Summer Yrlg Heifer 2006
- 1st Summer Yrlg Heifer Western National 2006

Jo-Dee Jade Nora Nillawafer EX-93 93-MS 2E

Jo-Dee Wonderment Nuclear ET EX-92 2E

• Nom All-American 5-Yr-Old 2015

• Nom All-American Sr 2-Yr-Old 2012

Jo-Dee Premium Nickelback ET EX-91 EX-MS

Jo-Dee Premium Nadia ET EX-91 91-MS

Jo-Dee Starbuck Nori ET EX-91 EX-MS

Jo-Dee Denmark Norabella ET EX-90 EX-MS

Valligrove No No Nanette ET EX-90 92-MS

Jo-Dee Starbuck Noticeable ET EX-90 EX-MS

Jo-Dee Starbuck Normandy ET EX-90 92-MS

Jo-Dee Denmark Nookie ET EX-90 EX-MS

Jo-Dee Wonderment Nuzzle ET EX-90

Jo-Dee Premium Nibbles ET EX-90

3rd Dam

Valligrove Jetway Nora 2E-E93

7-02 2x 365d 36260 3.6 1306 3.2 1162

Life: 2146d 166700 3.8 6371 3.3 5578

4th Dam

Toulumne Ensign Noel E90-2E

3-05 2x 302d 31440 3.5 1090 3.4 1056

5-10 2x 365d 23000 3.7 854 3.0 698

- 1st Total Performance Western/Nat CA 2001

BS3

ARETHUSA KINGPIN NOSTALGIA

68186922

Born: April 14, 2017 • Herd No. 24

2-02 2x 259d 11859 4.1 482 3.5 420 RIP

Milking: 38# 4.4F 3.8P SCC 71, 000

• Sells Dry

Due: May 19, 2020 Kalingen Calvin Glenwood ET

196BS54575

Blessing Tex Braiden ET

198435 Excellent-92

PPR -110 99%R PTAT +0.10 99%R 4/20

PTA -664M -47F -30P -262NM\$ 99%R (GEN)

PTA PL +1.8 SCS +2.87 DPR +0.6 SCE 7.1

Jo-Dee James Nikeisha ET

68119950

5/03 E91 E92 E91 E93 E91 E91 (4/15)

7-11 2x 339d 31890 4.0 1266 3.1 981

6-01 2x 305d 31640 4.2 1332 3.0 963

4-08 2x 305d 27250 5.3 1445 3.2 864

3-03 2x 304d 20980 4.1 868 3.2 674

• All-American Winter Yrlg 2011

• Jr Champ WDE 2011

• All-American Winter Calf 2010

• All-American Jr Best Three 2010

• 2 Time Jr Champ WDE 2010 & 2011

Full sister to Nikeisha

Jo-Dee James New York ET EX-90 EX-MS

Jo-Dee Trooper Kingpin

68127537

PPR -32 92%R PTAT +0.0 92%R 4/20

PTA -832M -7F -14P -110NM\$ 92%R (GEN)

PTA PL -1.8 SCS +2.94 DPR +1.8 SCE 5.9

Arethusa Braiden Nadia

68152017

5/10 E91 E92 E92 E90 E91 E90 (02/19)

4-01 2x 300d 26490 3.8 1010 3.3 863

5-05 2x 254d 19940 3.7 739 3.4 680

3-01 2x 267d 19300 4.2 812 3.2 618

2-01 2x 266d 15940 4.3 683 3.4 541

• 2nd 4-Yr-Old Northeast Nat'l 2017

• 2nd Jr 3-Yr-Old Eastern States Expo 2016

• All-American Spring Yrlg 2014

• Res. Jr Champ WDE 2014

• 1st Spring Yrlg WDE 2014

ARETHUSA FARM



ARETHUSA JONGLEUR NOVIA EX-90
SELLS AS LOT BS4

NORA!

- All-American Component Merit Cow 2007
- Grand Champion Central National Show 2007
- HM All-American Aged Cow 2006
- HM All-American 5-Yr-Old Cow 2004
- All-American Jr 3-Yr-Old Cow 2002
- Grand Champion Western National 2002
- 1st Jr 3-Yr-Old Cow Central National 2002
- Nom All-American Jr 2-Yr-Old Cow 2001
- 1st Jr 2-yr-Old Cow Western National 2001
- Grand Champion Western National 2001

Maternal sisters to Nikeisha

Jo-Dee Prelude Nancy E94 94-MS

4-00 2x 305d 27290 4.0 1120 3.4 963

- Nom All-American 4-Yr-Old Cow 2009
- Res All-American Jr 3-Yr-Old Cow 2008
- 1st Jr 3-Yr-Old Cow Western National 2008
- 2nd Jr 3-Yr-Old Cow & BU Central National 2008
- Res All-American Summer Yrlg Heifer 2006
- 1st Summer Yrlg Heifer Western National 2006

Jo-Dee Jade Nora Nillawafer EX-93 93-MS 2E

Jo-Dee Wonderment Nuclear ET EX-92 2E

- Nom All-American 5-Yr-Old 2015

- Nom All-American Sr 2-Yr-Old 2012

Jo-Dee Premium Nickelback ET EX-91 EX-MS

Jo-Dee Premium Nadia ET EX-91 91-MS

Jo-Dee Starbuck Nori ET EX-91 EX-MS

Jo-Dee Denmark Norabella ET EX-90 EX-MS

Valligrove No No Nanette ET EX-90 92-MS

Jo-Dee Starbuck Noticeable ET EX-90 EX-MS

Jo-Dee Starbuck Normandy ET EX-90 92-MS

Jo-Dee Denmark Nookie ET EX-90 EX-MS

Jo-Dee Wonderment Nuzzle ET EX-90

Jo-Dee Premium Nibbles ET EX-90

3rd Dam

Valligrove Jetway Nora 2E-E93

7-02 2x 365d 36260 3.6 1306 3.2 1162

Life: 2146d 166700 3.8 6371 3.3 5578

4th Dam

Toulumne Ensign Noel E90-2E

3-05 2x 302d 31440 3.5 1090 3.4 1056

5-10 2x 365d 23000 3.7 854 3.0 698

- 1st Total Performance Western/Nat CA 2001

BS4

ARETHUSA JONGLEUR NOVIA

68174008

3/09 E90 E91 E91 E90 V88 V89 (02/19)

Born: April 25, 2015 • Herd No. 17

3-03 2x 365d 22711 3.4 765 3.5 788

2-01 2x 248d 14866 3.8 571 3.4 503

4-07 2x 100d 9046 3.6 323 3.3 297 RIP

Fresh: December 1, 2019

Milking: 91# 3.8F 3.3P SCC 62,000

Bred: March 27, 2020 to Brown Heaven R Fast & Furious
54BS00568

Blessing Tex Braiden ET

198435 Excellent-92

PPR -110 99%R PTAT +0.10 99%R 4/20

PTA -664M -47F -30P -262NM\$ 99%R (GEN)

PTA PL +1.8 SCS +2.87 DPR +0.6 SCE 7.1

Jo-Dee James Nikeisha ET

68119950

5/03 E91 E92 E91 E93 E91 E91 (4/15)

7-11 2x 339d 31890 4.0 1266 3.1 981

6-01 2x 305d 31640 4.2 1332 3.0 963

4-08 2x 305d 27250 5.3 1445 3.2 864

3-03 2x 304d 20980 4.1 868 3.2 674

- All-American Winter Yrlg 2011

- Jr Champ WDE 2011

- All-American Winter Calf 2010

- All-American Jr Best Three 2010

- 2 Time Jr Champ WDE 2010 & 2011

Full sister to Nikeisha

Jo-Dee James New York ET EX-90 EX-MS

Jolahofs Polo Jongleur ET

120027093693

PPR -82 96%R PTAT +0.20 96%R 4/20

PTA -726M -50F -28P -236NM\$ 96%R (GEN)

PTA PL -0.4 SCS +3.30 DPR +4.5 SCE 6.0

Arethusa Braiden Nadia

68152017

5/10 E91 E92 E92 E90 E91 E90 (02/19)

4-01 2x 300d 26490 3.8 1010 3.3 863

5-05 2x 254d 19940 3.7 739 3.4 680

3-01 2x 267d 19300 4.2 812 3.2 618

2-01 2x 266d 15940 4.3 683 3.4 541

- 2nd 4-Yr-Old Northeast Nat'l 2017

- 2nd Jr 3-Yr-Old Eastern States Expo 2016

- All-American Spring Yrlg 2014

- Res. Jr Champ WDE 2014

- 1st Spring Yrlg WDE 2014



ARETHUSA SUPREME NOR EASTER ET EX-91 2E
DAM OF LOTS B55

BS5

Jo-Dee Nemo Richard ET

68155420
 PPR +41 98%R PTAT +0.50 98%R 4/20
 PTA +1141M +2F +15P +19NM\$ 98%R (MACE)
 PTA PL +0.6 SCS +3.00 DPR -0.7 SCE 6.2

Arethusa Supreme Nor-Easter ET

68138488
 6/01 2E-E91 E92 E95 E90 E90 E91 (12/17)
 5-10 2x 305d 37450 3.3 1237 3.3 1228
 3-10 2x 305d 29960 3.7 1099 3.3 978
 2-05 2x 305d 19430 4.8 927 3.4 653
 Life: 1523d 140080 3.9 5495 3.5 4880

ARETHUSA RICHARD NATALIE TWIN

68197900
 Born: September 2, 2017 • Herd No. 26
 1-11 2x 220d 10476 3.7 383 3.2 330 RIP
 Milking: 50# 4.2F 3.3P SCC 17,000
 Fresh: August 3, 2019

Due: September 2, 2020 to La Rainbow Bfly Dynamite
 14BS00393

Old Mill WDE Supreme ET

197920 Not Classified
 PPR +39 99%R PTAT +0.30 99%R 4./20
 PTA +39M +0F -1P +15NM\$ 99%R (MACE)
 PTA PL -0.4 SCS +3.02 DPR +0.4 SCE +9.0

Jo-Dee James Nikeisha ET

68119950
 5/03 E91 E92 E91 E93 E91 E91 (4/15)
 7-11 2x 339d 31890 4.0 1266 3.1 981
 6-01 2x 305d 31640 4.2 1332 3.0 963
 4-08 2x 305d 27250 5.3 1445 3.2 864
 3-03 2x 304d 20980 4.1 868 3.2 674

- All-American Winter Yrlg 2011
- Jr Champ WDE 2011
- All-American Winter Calf 2010
- All-American Jr Best Three 2010
- 2 Time Jr Champ WDE 2010 & 2011

Full sister to Nikeisha

Jo-Dee James New York ET EX-90 EX-MS

3rd Dam

Valligrove Jetway Nora 2E-E93

7-02 2x 365d 36260 3.6 1306 3.2 1162
 Life: 2146d 166700 3.8 6371 3.3 5578

4th Dam

Toulumne Ensign Noel E90-2E

3-05 2x 302d 31440 3.5 1090 3.4 1056
 5-10 2x 365d 23000 3.7 854 3.0 698

- 1st Total Performance Western/Nat CA 2001

ARETHUSA FARM



GOULAISE WONDERMENT ARTIC EX-91-2E
2ND DAM OF LOT BS6

BS6

ARETHUSA TB ANCHORAGE

68186920
Born: June 2, 2016 • Herd No. 22
2/08 V86 V87 V86 V85 V87 V85 (02/19)
2-03 2x 365d 22214 3.9 859 3.5 779
Fresh: March 30, 2020
• Sells Open

Pit-Crew Wonder Tanbark ET

68122966
PPR -30 98%R PTAT -0.30 98%R 4/20
PTA +572M +6F +15P -123NM\$ 98%R (GEN)
PTA PL -3.0 SCS +3.14 DPR -3.6 SCE 4.7

Arethusa Whiskey Alaska

840003124064370
4/10 V88 E90 V87 V88 V88 (02/19)
3-09 2x 365d 30022 4.0 1193 3.7 1098
2-02 2x 365d 23110 5.3 1228 3.6 831

Manis Glenn Whiskey ET

68133750
PPR +40 96%R PTAT +0.40 96%R 4/20
PTA +783M +1F +26P +14NM\$ 96%R (MACE)
PTA PL -1.5 SCS +3.21 DPR -2.2 SCE 6.2

Goulaise Wonderment Artic

107010689
2E-E91 E92 E91 E90 E90 E91 (02/19)
• All-Canadian Winter Calf 2012
• 1st Winter Calf Royal 2012

Livestock Mortality Insurance

PAULA BOVRE LIVESTOCK INSURANCE

W4226 St. Rd. 23 East, Fond du Lac, WI 54937
 Phone: 920.923.6991 Mobile: 920.960.0655
 email: grnorth81@gmail.com

APPLICATION FOR INSURANCE WITH AMERICAN LIVE STOCK INC.
 REMOVE AND HAND TO COMPANY REPRESENTATIVE



I/We _____

Of _____

Address _____ City _____ State _____ Zip Code _____

Telephone _____

hereby apply for insurance against loss by death resulting from disease or accidental injuries
 for the term of _____ on the following described animal or animals.

Lot	Name of Animal	Registration and/or Tattoo Number	Breed	Birthdate	Purchase Price	Amount of Insurance	Rate	Premium
			Sex		Purchase Date			

Dairy Cattle Rates

Calves	Annual	1 Month	3 Months	6 Months
2 weeks – 7 weeks of age	12.0%	4.8%	7.2%	8.0%
7 weeks – 3 months of age	10.0%	4.0%	6.0%	6.7%
Bulls				
Up to 6 years of age	6.0%	2.4%	3.6%	4.0%
7 years	7.0%	2.8%	4.2%	4.7%
8 years	8.0%	3.2%	4.8%	5.3%
Cows				
Up to 5 years of age	8.0%	3.2%	4.8%	5.3%
6 years	9.0%	3.6%	5.4%	6.0%
7 years	10.0%	4.0%	6.0%	6.7%

Minimum Policy Premium is \$150.00

Term must be a minimum of 60 days to cover any loss resulting from calving.

This is not a Binder until accepted by Insurance Company Representative



HOLSTEIN ASSOCIATION TERMS AND CONDITIONS FOR PUBLIC SALES

EFFECTIVE MARCH 2, 1996 - Amended October 1, 1997, June 28, 2000, June 23, 2002, and March 26, 2010

TERMS: The terms of the sale are cash unless arrangements are made prior to the sale or are printed in the sale catalog. Only when the above conditions are met will the buyer be entitled to the warranties listed below. In no case will animals be released unless settlement is made with the clerk of the sale.

RESPONSIBILITY: The seller, buyer, and manager of this sale are obligated to comply with the provisions of these terms and conditions.

EXPORT SALES: Buyer assumes all responsibility for health tests required by the importing country.

BIDS: The highest bidder is the buyer. Bidding parties or their agents are responsible for all bids placed. Every animal or lot presented for bidding is pledged to absolute sale. In case of dispute, the animal or lot will again be put up for advance bids, and if there is no advance bid, the animal or lot will be sold to the person the auctioneer accepted the last bid from. In case two or more claim the bid, the auctioneer will indicate the party whose bid he recognized. Other claimants will be given an opportunity to increase the bid and bidding will be restricted to the two or more claimants.

BY-BIDDING: Bidding directly or indirectly by the sole owner of any animal or lot is prohibited unless the intention to bid is disclosed specific to each animal in the catalog and announced when the animal enters the ring. Bidding by any member of a partnership, syndicate, or other entity having an ownership interest in an animal or lot is permitted.

TRANSFER OF OWNERSHIP: For all Registered HolsteinsSM, the transfer of ownership to the buyer will be recorded on the records of Holstein Association USA and a certificate of registration showing that transfer of ownership will be provided to the buyer free of charge. For embryos, the transfer of ownership to the buyer will be recorded on the records of Holstein Association USA free of charge to the buyer.

RISK: All animals located at sale site are at the purchaser's risk as soon as struck off, but will be cared for free of charge for a maximum of 24 hours following the end of the sale.

WARRANTIES:

- 1) Each consignor warrants clear title to the animal or lot, and the right to sell same.
- 2) To the best of the seller's knowledge, each animal is sound and healthy in every respect and embryos have been recovered, processed, frozen, transferred and graded in keeping with IETS recommendations unless otherwise noted in the catalog or announced from the auction stand. Every precaution will be taken to represent the physical condition of each lot exactly as is known. Examination of all purchases should be made immediately after the purchase and before the close of the sale, and if found not to be as represented, complaint must be reported to the sale management before the close of the sale. In the event no complaint is filed, it is understood that the buyer assumes full ownership in the case of animals at sale site together with all risks, after which no representations of the seller can be challenged through the sale management. Heifers that never calved are in no way guaranteed as to the condition of their udders following calving.

3) Breeding Warranty

The seller guarantees all animals to be breeders, but not beyond the purchase price, with the following understanding:

- a. Males - Should any bull after reaching the age of fourteen months fail to prove a breeder after being used for two months on cows or heifers known to be breeders, the matter shall be reported in writing to the seller within three months of the sale date. The report must include the animal's examination record, a written statement of treatment, and a statement of the animals' inability to breed,

by a licensed veterinarian. The seller has the option to refund the purchase price or make other settlement that is satisfactory to the buyer. In either case the rights of ownership of the animal return to the seller. The seller makes no guarantees with respect to the ability to freeze semen.

- b. Females - All females are guaranteed to be breeders with the exception of:
 1. Cows over 7 years of age when sold;
 2. Cows and/or heifers carrying a pregnancy that is the result of an embryo transfer.

Report of a non-breeder must occur in writing within 3 months of the date of sale or before the animal reaches 21 months of age and must be submitted to the seller. The report must include the animal's examination record, a written statement of treatment, and a statement of the animals' inability to breed, by a licensed veterinarian. The seller has the option to refund the purchase price or make other settlement that is satisfactory to the buyer. In either case the rights of ownership of the animal return to the seller.

Females bred when sold and pronounced in calf are presumed to be pregnant but pregnancy is not guaranteed unless so announced. The seller makes no warranty that pregnant cows will deliver calves or that they will carry calves full term.

- c. If, after the sale, embryos or oocytes are recovered from a female or an attempt is made to superovulate her, this negates the breeding warranty unless there is a separate written agreement between buyer and seller.

SHIPPING: Assistance will be given in arranging shipping of the animals after the sale. All costs, risks and responsibility will be borne by the purchaser.

PEDIGREE INFORMATION: All production, classification, type and production summaries are current. Only information recorded on Holstein Association USA pedigrees is used. Any production or classification records supplied by the seller or consignor will be properly identified as provided by owner. Records in progress are identified as such.

GENOMIC INFORMATION: If genomic information on the animal or embryo is available, it must be dated and disclosed at or before the time of sale.

EMBRYO TRANSFER: All registered animals that have resulted from embryo transfer are identified with one of the following suffixes in the name: ET, ETS (from split embryo), or ETN (from nuclear transfer). If unregistered, the appropriate technology will be identified. Donor dams are identified.

HEALTH WARRANTY: The seller will provide an official health certificate to the buyer for each animal showing the results of all health tests made in preparation for this sale as required by the state where the cattle reside. Other health tests completed for this sale will be disclosed.

ERRORS: The material in this catalog has been carefully edited. If any errors or omissions are discovered, they will be announced. Such announcements take precedence over that printed in this catalog.

ACCIDENT: The sale management, the consignors, and the owner of the grounds will not be responsible in any case for the condition of the grounds or the behavior of the animals and disclaim any liability in the event of personal accident or property loss.

LIMITATIONS OF WARRANTIES: Warranties contained herein, unless terminated earlier, will cease upon the resale of an animal.

Index

ARETHUSA ABSOLUTE AWAKENING	LOT 25	ARETHUSA KINGBOY GISELE	LOT 54
ARETHUSA ABSOLUTE ZAZA	LOT 48	ARETHUSA KNGBOY TWILIGHT-ET	LOT 60
ARETHUSA ABSTRACT TRINITY	LOT 59	ARETHUSA LEAP YEAR JULIET	LOT 74
ARETHUSA AMB VANESSA-ET	LOT 64	ARETHUSA MCCUTCHEN TORI	LOT 62
ARETHUSA ANGELS ADELE-ET	LOT 2	ARETHUSA MCUTCHEN AZALEA-ET	LOT 1
ARETHUSA ARMANI MAISIE-ET	LOT 41	ARETHUSA ON A TUESDAY	LOT 57
ARETHUSA ARTISAN ALANA	LOT 11	ARETHUSA REDBURST AMARA	LOT 30
ARETHUSA ATWOOD JAIDEN-ET	LOT 73	ARETHUSA SANCHEZ VALISE-ET	LOT 53
ARETHUSA AUSTIN ALMITA	LOT 28	ARETHUSA SEAVER JEWEL	LOT 76
ARETHUSA AUSTIN LEAH	LOT 71	ARETHUSA SID ANETIA	LOT 4
ARETHUSA AWESOME LEXXUS	LOT 72	ARETHUSA SID APRICOT-ET	LOT 5
ARETHUSA BEEMER GOLD	LOT 52	ARETHUSA SID ASTRA-ET	LOT 14
ARETHUSA BEEMER VANYA	LOT 47	ARETHUSA SID AXIS-ET	LOT 16
ARETHUSA BLAKE AURORA	LOT 6	ARETHUSA SIDEKICK JAIDEN	LOT 75
ARETHUSA BOSTN PARSONIA-RED	LOT 79	ARETHUSA SOLOMON ADELINE	LOT 17
ARETHUSA BOSTON ACCENT	LOT 32	ARETHUSA SOLOMON AROMA	LOT 7
ARETHUSA BOSTON DESIGN	LOT 39	ARETHUSA SOLOMON AVOCADO-ET	LOT 36
ARETHUSA BOSTON VICTORY	LOT 44	ARETHUSA SOLOMON AYO-ET	LOT 35
ARETHUSA BRADNICK BROOKE	LOT 37	ARETHUSA SOLOMON MAUI-ET	LOT 42
ARETHUSA BRADNK ANNISTON-TW	LOT 22	ARETHUSA SOLOMON ZOEY	LOT 49
ARETHUSA BRADY AMARYLLIS-ET	LOT 34	ARETHUSA TARTAN INDIGO-TW	LOT 66
ARETHUSA BRADY ZETTA	LOT 50	ARETHUSA TARTAN IVORY-TW	LOT 67
ARETHUSA BROKAW ANELLAH-ET	LOT 19	ARETHUSA TATTOO ANGELINA	LOT 12
ARETHUSA BROKAW VESTAH-ET	LOT 45	ARETHUSA UNIX ALLIYAH	LOT 9
ARETHUSA CAPTURE ALORA	LOT 31	ARETHUSA UNIX ASTONISH	LOT 24
ARETHUSA CAPTURE DEENA	LOT 40	ARETHUSA UNIX RAVEN	LOT 78
ARETHUSA CHILL ADIDAS	LOT 21	ARETHUSA UNSTOPBL AWAKENING	LOT 26
ARETHUSA CHILL AVERIE	LOT 15	ARETHUSA UNSTPBUL DAWN-ET	LOT 38
ARETHUSA CRSHABULL MAGNOLIA	LOT 43	MS TARAS TIJUANA	LOT 61
ARETHUSA DANIEL AUBREY	LOT 29	MS TRI-DEE RM ATWOOD TARA	LOT 58
ARETHUSA DEMPSEY VIMEO-ET	LOT 46	WOODMANSEES KINGBOY CALYPSO-ET	LOT 56
ARETHUSA DIAMONDBACK ADINE	LOT 18	WOODMANSEES KINGBOY COURAGE	LOT 55
ARETHUSA DOC IRIS-TW	LOT 69		
ARETHUSA DOC ISABEL	LOT 68	<u>JERSEYS</u>	
ARETHUSA DOC IVY-TW	LOT 70	ARETHUSA EXCITATION VITA-ET	LOT J3
ARETHUSA DOORMAN ALARM-ET	LOT 13	ARETHUSA FAXON VIENNA-ET	LOT J2
ARETHUSA DOORMAN AMAZE	LOT 20	ARETHUSA GENTRY CHAVONNE-ET	LOT J1
ARETHUSA DOORMAN GLIMMER-ET	LOT 51	ARETHUSA VINTAGE TEQUILA-ET	LOT J4
ARETHUSA DOORMAN RIHANNA	LOT 77	RATLIFF EXCITATION ALANA-ET	LOT J5
ARETHUSA FEVER ALANNIS-ET	LOT 8		
ARETHUSA GC AMAZON-ET	LOT 3	<u>BROWN SWISS</u>	
ARETHUSA GOLDSUN ALANA-ET	LOT 10	ARETHUSA BRAIDEN NADIA	LOT BS1
ARETHUSA GOLDSUN ASHIA	LOT 33	ARETHUSA JONGLEUR NOVIA	LOT BS4
ARETHUSA GS VAN INFINITY-ET	LOT 63	ARETHUSA KINGPIN NOSTALGIA	LOT BS3
ARETHUSA GS VAN INGRID-ET	LOT 65	ARETHUSA RICHARD NATALIE TWIN	LOT BS5
ARETHUSA HEZTRY AESTHETIC	LOT 23	ARETHUSA TANKBARK NIRVANA	LOT BS2
ARETHUSA KINGBOY AMELIA	LOT 27	ARETHUSA TB ANCHORAGE	LOT BS6

De-Lite Graphics
New Bloomfield, PA
717-979-5272

delitegraphics@centurylink.net