



# NEW Series: M7-2



Kubota Canada introduces the M7-2, a new generation of M7 Series Tractors built with special features to increase efficiency and productivity.

**3 models available**  
**M7-132 / M7-152 / M7-172**

**4 grades to suit your needs**  
**Standard / Deluxe/ Premium / Premium KVT**

## New configuration

Simplified controls easy to operate featuring a Closed Center Load Sensing (CCLS)

### Deluxe grade : The best of two worlds

Kubota has taken the simplicity of operation of the standard grade with select specifications from the premium grade and designed the all new M7-2 Deluxe available in both the existing M7-152 and M7-172 models.

Now farmers can have a tractor which is easy to operate and has features such as a Closed Center Load Sensing (CCLS) hydraulic system with 29 GPM flow and optional 110 inch bar axle to accomplish the most demanding jobs.



### 29 gal/min closed center hydraulic system with hydraulic trailer brake

29gal/min CCLS:

- Allows the operator to utilize implements that require high flow.

The hydraulic trailer brake:

- Improves safety when road towing.

### 3 mechanical rear remotes with built in flow control, 4<sup>th</sup> rear remote optional

- Simplified, intuitive controls allow easy operation.

### 40km/hr and new Powershift transmission, creep optional

- Allows the operator to quickly reach travel speed and provides a larger working range.

## Front Loader

Kubota is committed to improving the ease and efficiency of front loader operations.

Kubota's LM2605 advanced loader systems features:

- Kubota Z-Bar linkage mechanical self-leveling
- Single-lever hydraulic valve quick coupler
- Quick attachment and detachment
- Kubota shockless ride(KSR)
- Third Function Valve
- Euro Quick Coupler

**Mechanical control**  
Standard and Deluxe grade

**Electrical control**  
Premium and Premium KVT grade



## Improved engine performance and better fuel economy

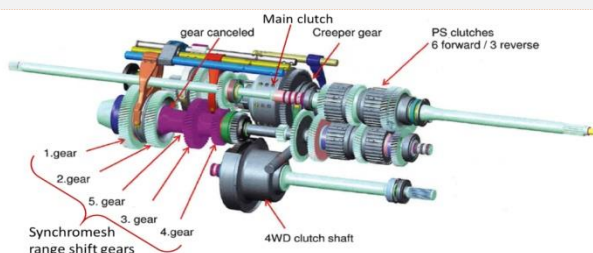
### DID YOU KNOW...?

Kubota has lowered the rated engine speed from 2200 rpm to 2100 rpm and lowered the maximum output speed from 2200 rpm to 1900 rpm. The result is improved performance and output in the engine speed range actually used for power take off and towing work. The lower engine speed also results in better fuel economy and reduced engine noise.

## New Powershift transmission for improved acceleration and performance

### Semi-Power shift F30/R15 (30 forward/ 15 reverse)

A new semi-powershift transmission provides an even greater range of forward gears letting you find the right gear for each job for maximum productivity. The number of main gears has been increased from 4 to 6 within working ranges of the transmission. An auto shifting function automatically evaluates the engine load, advances to the appropriate range gear and adjusts the engine output accordingly, resulting in improved acceleration performance under light loads.



6 Powershifts and 5 Speed synchronized electronically controlled ranges:

- 6 Powershift that provides a large working range resulting in less range shifting.
- Electric range shift is easy to operate and eliminates the need for clutching.

Enhanced auto-shift:

- Speed matching will advance the transmission to the next range, allows operator to quickly reach travel speed.



# NEW Series: M7-2

## Comfort matters

Kubota knows how important comfort is when working long days in the field. Operators of the M7-2 series will enjoy a spacious four post suspended cab with virtually unobstructed views. To further increase operator comfort, decibel levels have been reduced and our new deluxe seat with more cushioning and armrest have a wider range of adjustments and has been redesigned with your comfort in mind.

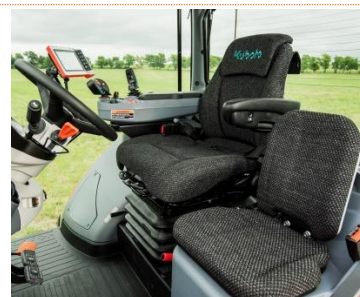
### Cabin

- Category 2 pressurized cab improves dust control and quieter cab
- Improved heating and cooling performance with increased airflow
  - These new cab features create a more comfortable environment for the operator



### New Operator's Seat

- Thicker/Wider/Deeper cushion with depth and tilt adjustments built into the seat base
- Constant swivel
- Increased legroom
- The features of the new seat improve operator comfort



### A/C Performance

The M7-2 Series' new pressurized cab features a high performance heating, ventilation and air conditioning system (HVAC) with 25% greater air flow that will quickly heat or cool the cabin and maintain desired temperature.



### Hydraulic flow control adjustment

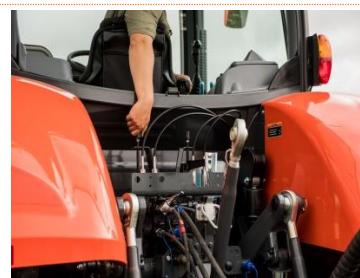
#### Standard and Deluxe grade only

No need to leave the cab to adjust the hydraulic flow rate.

The flow rate adjustment dial is now conveniently located within easy reach from inside the cab, saving you time — and improving productivity — when setting up the tractor for various types of work.

#### Premium grade only

The hydraulic flow is controlled through the monitor.



### Monitor Options and Enhancements for Premium Models

- Choice between 7" and 12" monitor
  - The new 7" monitor frees up space in the cab allowing for increased visibility, or if you are installing an additional precision farming monitor.
- Save up to 20 different headland management programs
  - Each program allows the operator to control multiple operations with the push of a single button.
- A new 7" touch screen LCD monitor is available for the Premium and Premium KVT grade.



To know more about the M7-2 Series, visit:

[Kubota.ca](http://Kubota.ca)

Follow-us on

[@KubotaCanada](https://www.facebook.com/KubotaCanada)

[@KubotaCanadaLtd](https://twitter.com/KubotaCanadaLtd)

[YouTube](https://www.youtube.com/KubotaCanada): Kubota Canada

[Instagram](https://www.instagram.com/KubotaCanada): @KubotaCanada

For more information or to schedule an interview, please contact:

Geneviève Cormier

Massy Forget Langlois Public Relations

514-842-2455, ext. 22

[gcormier@mflrp.ca](mailto:gcormier@mflrp.ca)