

Virginia Tech Showcase Sale

October 15th, 2016



**Blacksburg, VA
The Livestock Judging Pavilion
11:00 am**

Virginia Tech



*Showcase
Sale*



SATURDAY OCTOBER 15, 2016

11:00AM

THE JUDGING PAVILION
ON PLANTATION ROAD

BLACKSBURG, VA

Dairy Tour led by Dr. Bob James

Friday October 14th, 2016 – 3PM – Kentland Dairy Complex

Pre-Sale Social: Friday, October 14, 2016 – 6PM – Dairy Complex

Post Sale Social: Saturday, October 15, 2016 – 6:30PM – Bull & Bones

Sale Staff

Chris Hill, Auctioneer (AU005197) 202-255-7907

David J. Lentz 717-329-9202

Nick Raggi 443-762-8338

Cam Davis 410-984-0315

Dr. Knowlton, advisor 540-231-5287

Dr. Alex White, advisor 540-231-7444

Nicole Hardy 267-259-2942

Ryan Zimmerman 717-398-7365

Dylan Ellenburg 423-714-6654

Andrew Laffey 610-656-7451

Hannah Van Dyk 559-309-8448

Carly Shaw 301-988-4808

Cortney Hostetter 717-673-4571

Kathryn Wright 802-393-7471

Casi Fleshman 276-685-2752

Sandra Krone 215-421-9861

Hayley Huffard 571-385-7002

Stevie Mayton 336-684-4438

Cole Leonard 540-490-1061

Eli Carwile 434-6330

Internet bidding and live webcast available at www.cowbuyer.com



Directions to Sale Barn

From I-81: Take exit 118B towards Blacksburg/Virginia Tech. Stay on Route 460 and take the 2nd Prices Fork Road exit. Turn left at the first stop light onto Plantation Road. The Judging Pavilion is a half mile down the road on the right across from the Alphin-Stuart Livestock Arena.

*The Dairy Club of Virginia Tech has a tradition of excellence and has always prided itself on conducting top-notch activities. The Dairy Club is one of the most recognized clubs on campus and one of the elite chapters in the American Dairy Science Association-Student Affiliate Division. On Friday, April 25th, 2003, the club began a new chapter in its history hosting the inaugural **Showcase Sale at Virginia Tech**. The students' great planning and hard work, and the support of our alumni and friends have made this sale a tremendous success.*

*The success continues on October 15th, 2016 when we sell an exciting lineup of elite Holsteins in the **Eighth LIVE Showcase Sale**. The sale will be held at Judging Pavilion at 1 AM on Saturday the 15th. Come to Blacksburg early if you can, and view the consignments at the pre-sale social late Friday afternoon and tour our new dairy complex.*

As we prepare for the 13th Showcase Sale Series, we are thankful for the support that has been given to the club by so many to make this event a success. Enjoy the sale.

Advisors, Dairy Club of Virginia Tech

Dave Winston

Dr. Katharine Knowlton

Dr. Kristy Daniels

Dr. Gonzola Ferreira

Thank you to all club members, advisors, alumni, consignors, and industry supporters who have graciously supported this sale through consignments, donations, and hours of service to make this sale and every sale a success.

Nicole Hardy-Sale Chair

Carly Shaw-Clerking

Cortney Hostetter-Clerking

Hannah Van Dyk-Catalog

Casi Fleshman-People

Kathryn Wright-Facilities

Sandra Krone-Donations

Ryan Zimmerman-Selection

Hayley Huffard-Advertising

Stevie Mayton-Health

Dylan Ellenburg-Barn

Eli Carwile-Barn

Cole Leonard-Fitting

Andrew Laffey-Budget Chair

2016 Showcase Sale Leadspersons

Cortney Hostetter

Kathryn Wright

Kayla Umbel

Cole Leonard



**OCONNORS LADD LACEY-ET EX-90 EX-MS
DAM OF LOT 1**

1

MS AWESOME LIVIN THE DREAM

840003136496531 *RC
Born: March 3, 2016

TRIPLE-T, HEATH & ENTOURAGE
C/O NATHAN THOMAS
CABLE, OH 43009
937-747-2344

Luck-E Awesome-Red

72186769 *CV *TL *TY *TD
PTA -849M -7F -21P 79R 8/16
PTA -.7PL 3.19SCS -1.6DPR 10.2%DCE
PTA +3.09T +3.31UDC +1.54FLC 78R 8/16
GTPI +1653G

Oconnors Ladd Lacey-ET

11536034C Excellent-90 EX-MS *RC *TP
1-11 2x 361d 21580 4.3 929 3.4 742
• 1st Sr 3-Yr-Old Mid-East Summer Nat'l 2016
• 4th Sr 3-Yr-Old 2016 NY Spring Show

Apples Absolute-Red-ET

139358472 Excellent-94 *CV *TL *TY *TD
PTA -1578M +6F -12P 99R 8/16
PTA +2.77T +2.72UDC +2.24FLC GTPI +1534G

Luck-E Advent Asia-ET

63437444 *RC
6-02 2x 365d 40150 4.9 1984 3.1 1261
Life: 1282d 113730 5.1 5814 3.2 3645

Tiger-Lily Ladd P-Red-ET

69405976 Excellent-91 *PC *TV *TL *TY *TD
PTA -1362M -8F -9P 99R 8/16
PTA +2.21T +2.05UDC +1.09FLC GTPI +1953G

Comestar Goldwyn Lilac-ETS

103455285C Very Good-89-CAN
4-06 2x 365d 50607 4.6 2308 3.4 1739
Life: 1044d 106756 4.6 4863 3.5 3783
• Nom All-Canadian Sr 2-Yr-Old Cow 2008

3rd-6th Dams

Lylehaven Lila Z-ET EX-94-CAN 9* *TV
4-05 2x 365d 49100 4.0 1960 3.5 1695
Life: 3 Lacs 166194 3.9 6504 3.4 5701

- HM All-Canadian 5-Year-Old 2007
- HM All-Canadian 4-Year-Old 2006
- All-Canadian Junior 2-Year-Old 2004

Lylehaven Form Laura-ET EX-94 EEEEE 3E 6*
8-08 2x 365d 39320 3.9 1529 2.9 1144
Life: 2267d 195690 4.0 7731 2.9 5646

- HHM All-American 4-Year-Old 2003
- Res All-Canadian, Jr 3 Yr Old Cow 2002

Thiersant Lili Starbuck-ET EX-94 EEVEE 5E 2*
9-11 2x 365d 30910 4.5 1385 3.3 1023
Life: 3428d 238806 4.7 11291 3.2 7673

Ivyhall Astro Jet Ronie VG-86-6YR-CAN 1*
5-04 2x 305d 18472 4.2 769 3.1 578



FARNEAR-TBR-BH VICKIE-ET VG-87 EX-MS
2ND DAM OF LOT 2



VISION-GEN SH SHO A12037-ET VG-87 VG-MS
3RD DAM OF LOT 2

Maternal sisters to A12037

Vision-Gen SHF As D12158-ET EX-92 EX-MS
3-05 2x 305d 32550 4.1 1330 2.9 957

Maternal sisters to D12158-ET

Vision-Gen Sh Sho A12024-ET VG-85

• Sold for \$30,000 at Destination Hawaii Sale

Vision-Gen SHF As D12131-ET

• Sold for \$26,000 at Sprucehaven Select Sale

3rd Dam

Vision-Gen Sh Sho A12037-ET VG-87 VG-MS
2-02 2x 327d 28300 3.7 1045 3.2 915

• Sold for \$19,500 at Vision-Gen & Partners Sale
4th Dam

Ky-Blue GW Dana-ET EX-91 EX-MS

4-01 2x 185d 16880 4.5 766 3.0 509

Full sister to GW Dana

KY-Blue GW Debbie-ET EX-91

• All-American Summer Yearling 2009

• 2nd Summer Yearling WDE 2009

• 1st Summer Yearling Midwest Spring Nat'l 2009

5th-7th Dams

BVK Outside Diana-ET EX-92 EEEVE 2E DOM

5-01 2x 365d 31920 3.5 1129 3.2 1034

Life: 1544d 107400 3.5 3708 3.1 3348

Ms Kingstead Chief Adeen-ET EX-94 2E DOM

3-05 2x 310d 30180 4.0 1209 3.6 1077

Life: 1382d 100760 4.0 4010 3.6 3649

• Nom All-American Jr 3-Year-Old 2000

• Nom All-American 4-Year-Old 2001

• Member All-American Produce 2000 & 2001

C Aitkenbrae Starbuck Ada EX-94 EEEE 2E DOM

13-8 2x 365d 25150 3.0 764 3.4 843

Life: 6 Lact 137732 3.4 4749 3.4 4647

• All-American Produce of Dam 2000, 2001

• All-American 3-Year-Old 1990

2

ENDEAVOR GENOMIC HOLSTEINS LLC
C/O TODD WIDHOLM
CLIFTON, IL 60927
815-697-2700

S-S-I Montross Jedi-ET

840003123886035 99%RHA-I *TV *TL *TY *TD

PTA +2497M +84F +81P 77R 8/16

PTA +6.3PL 2.96SCS +1.8DPR 4.4%DCE

PTA +2.15T +1.44UDC +1.90FLC 75R 8/16

GTPI +2806G

IHG Flame Vickie 55679-ET

840003010354426 99%RHA-NA GP-84 VG-MS @ 2-04

77K GTPI +2509G +606M +63F +28P 77R 8/16

PTA +5.3PL 2.72SCS +2.3DPR 5.0%DCE

PTA +2.45T +2.12UDC +1.86FLC 74R 8/16

ENDCO JEDI VICKIE 76493-ET

840003137206068 99%RHA-I

Born: June 18, 2016

12K GTPI +2646 +1552M +74F +55P 39R 8/16

PTA +5.8PL 2.84SCS +2.1DPR 4.7%DCE

PTA +2.18T +1.60UDC +1.82FLC 70R 8/16

Bacon-Hill Montross-ET

71703339 Very Good-88 *TV *TL *TY *TD

PTA +2523M +86F +73P 86R 8/16

PTA +2.27T +1.68UDC +2.17FLC GTPI +2613G

S-S-I Suprsire Miri 8679-ET

840003011538078 99%RHA-I Very Good-88 DOM

Vieuxsaule Flame-ET

71699265 99%RHA-NA VG-87-CAN *TV *TL *TY

PTA -366M +64F +13P 89R 8/16

PTA +2.05T +1.67UDC +1.81FLC GTPI +2379G

Farnear-TBR-BH Vickie-ET

71290953 Very Good-87 EX-MS

77K GTPI +2504G +1433M +69F +46P +2.42T 8/16

2-02 3x 365d 38990 3.9 1532 3.1 1200

"Fresh again should be EX"



WHITAKER JASPER ASIA-ET EX-91 EX-MS 2E
DAM OF LOT 3

3

ENTOURAGE-LC
C/O KATHY STILES IAGER
GAITHERSBURG, MD 20882
301-963-6776

Heavenly Golden Dreams

642262 *TV *TL
PTA -716M +9F -14P 92R 8/16
PTA +.4PL 2.67SCS +.0DPR 7.0%DCE
PTA +2.74T +3.17UDC +2.44FLC 89R 8/16
GTPI +1971G

Whitaker Jasper Asia-ET

55160153 Excellent-91 EX-MS 2E
5-00 2x 267d 20310 3.7 758 2.9 580
3-09 2x 305d 20120 3.6 721 2.9 580
2-04 2x 244d 14630 3.6 520 3.0 443

ENTOURAGE-LC GD AMBROSIA-ET

840003137877846
Born: June 1, 2016

Braedale Goldwyn

10705608C GP-CAN EXTRA'05 GM 12/11 *TV *TL
PTA -358M +13F +1P 99R 8/16
PTA +1.79T +1.51UDC +1.49FLC GTPI +1880G

MD-Delight Durham Atlee-ET

131704103 Excellent-92 EEEEE DOM
3-11 2x 365d 38290 5.5 2091 3.3 1249
• All-American Sr 3-Yr-Old Cow 2005

Wilcoxview Jasper-ET

128620869 *TV *TL *TD
PTA -826M +10F -27P 99R 8/16
PTA +1.87T +1.09UDC -.03FLC GTPI +1368G

La-Foster Astro Adona-ET

136098924 Excellent-90
4-06 2x 365d 31180 3.1 969 2.8 877
2-05 2x 365d 28540 2.8 805 3.0 869

Maternal Sisters to Adona

- MS Atlees Goldwyn Ariel-ET** EX-92 EX-MS
• Res All-American Jr 2-Yr-Old 2009
- MS Atlees Shottle Aubry-ET** EX-92 DOM
- La-Foster Gibson Allure** EX-92 EEEEE
- MS Atlees Gold Abigail-ET** EX-91 DOM
- MS Atlees Gold Abigail-ET** EX-91 DOM
- Ms Atlees Roy Autumn-ET** EX-90
- All-American Fall Yearling in Milk 2008
- Jr Champion International Show 2007

3rd Dam

MD-Delight Durham Atlee-ET EX-92 GMD DOM
3-11 2x 365d 38290 5.5 2091 3.3 1249
2-08 2x 365d 32520 4.3 1400 3.1 1013

- All-American Sr 3-Yr-Old Cow 2005

Dam of **Aftershock, Atwood, Attic**

4th Dam

MD-Delight Strm Amberlee-ET VG-88 DOM
2-02 2x 365d 26170 3.7 969 3.2 836

5th & 6th Dams

Ms Kingstead Chief Adeen-ET EX-94 2E DOM

3-05 2x 310d 30180 4.0 1209 3.6 1077
Life: 1382d 100760 4.0 4010 3.6 3649

- Nom All-American Jr 3-Year-Old 2000
- Nom All-American 4-Year-Old 2001
- Member All-American Produce 2000 & 2001

C Aitkenbrae Starbuck Ada EX-94 2E DOM 4*

5-06 2x 356d 30055 3.5 1043 3.5 1049

Life: 6 Lact 137732 3.4 4749 3.4 4647

- All-American Produce of Dam 2000, 2001
- All-American 3-Year-Old 1990



DUBEAU DUNDEE HEZBOLLAH EX-92 EEEEE
DAM OF LOT 4

4

ST JACOBS ABC INC
DE FFOREST, WI 53532
802-527-9683

Gen-Com Gold Chain

3009999534
PTA -185M +8F -8P 79R 8/16
PTA -1.2PL 2.88SCS -1.1DPR 4.6%DCE
PTA +1.98T +1.65UDC +1.99FLC 77R 8/16
GTPI +1789G

Dubeau Dundee Hezbollah

104117050C Excellent-92 EEEEE @ 4-05
4-03 2x 365d 42050 4.4 1859 3.1 1299
2-03 2x 365d 27190 3.4 913 3.4 929
• Reserve All-American 4-Year-Old 2011
• HM Sr Champ International Holstein Show 2011
• Grand Champion, Midwest Spring Nat'l 2011
• 1st 4-Year-Old, Midwest Spring Nat'l 2011
• All-Amer & All-Can Sr 2-Year-Old 2009
• Int Champion, International Show 2009
• 1st Sr 2-Year-Old, International Show 2009
• All-Quebec Sr 2-Year-Old 2009
Dam of **94HO16187 Heztry *RC, 94HO16338**
Heath & 94HO16497 Hezton

ST-JACOB GCHAIN HIPHOP-ET

840003137522952 99%RHA-NA
Born: June 1, 2016

Mr Chassity Gold Chip-ET

140145553 Excellent-92 *TR *TV *TL *TY *TD
PTA -268M +0F -23P 99R 8/16
PTA +2.47T +2.48UDC +2.24FLC GTPI +1876G
Robrook Goldwyn Cameron
105794423 Excellent-95 EEEEE
4-03 2x 365d 38420 4.0 1551 3.3 1257
Life: 1205d 100280 4.1 4089 3.4 3427

Regancrest Dundee-ET

127640114 Excellent-95 *TV *TL *TY
PTA -659M -36F -17P 99R 8/16
PTA +1.17T +1.40UDC +.13FLC GTPI +1384G

Dubeau Lyne La Trent Huit B

100486776C Excellent-90
5-05 2x 365d 28582 4.3 1080 3.2 815
6-10 2x 365d 27773 4.3 1205 3.3 919
4-02 2x 365d 24980 4.4 1095 3.2 806
2-11 2x 365d 22193 4.6 1016 3.5 775
1-11 2x 327d 17559 4.7 817 3.4 597
Life: 1787d 121087 4.4 5363 3.3 4026

Maternal sisters to Hiphop

St-Jacob Durchan Haleiwa-ET EX-92
St-Jacob Goldwyn Haley-ET EX-92
• 4th Sr 3-Yr-Old North-East Fall Nat'l 2014
St-Jacob Goldwyn Hazie-ET EX-92
• Int & Grand Champ VT State Holstein Show 2014
St-Jacob Destry Harmony-ET EX-91
St-Jacob Destry Honey-ET EX-91
St-Jacob Goldwyn Helena-ETS EX-91
Hez Goldsun Hollis-ET EX-90
St-Jacob Sanchez Honolulu-ET EX-90
And 30 other sisters VG

3rd Dam

Dubeau JY Antoinette VG-87-CAN 1*
4-03 2x 321d 29111 3.9 1148 3.3 956
Life: 9 Lact 233712 4.1 9579 3.5 8157



COWTOWN DURHAM LUELLE-ET EX-94 EEEEE 2E
DAM OF LOT 5



ELLEETA SKYBUCK LUCY EX-95 EEEEE 3E
2ND DAM OF LOT 5

5

JONATHAN & ALICIA LAMB
OAKFIELD, NY 14125
585-704-2501

Oh-River-Syc Byway-ET

71310557C Very Good-85
PTA +947M +7F +20P 79R 8/16
PTA +1.0PL 2.95SCS -0.7DPR 5.8%DCE
PTA +3.84T +3.74UDC +1.97FLC 79R 8/16
GTPI +2157G

Cowtown Durham Luella-ET

63651103 Excellent-94 EEEEE 2E
6-07 3x 365d 34570 3.4 1182 3.2 1100
2-06 2x 365d 26850 3.7 981 3.3 880
5-06 2x 305d 25140 3.9 968 3.2 794
4-00 3x 305d 19660 3.5 685 3.3 650
Life: 1572d 119880 3.6 4320 3.3 3906

HEIFER CALF

Registration Pending
Born: June 2016

Sully Hart Meridian-ET

69951907
PTA +2218M +33F +53P 99R 8/16
PTA +3.21T +2.81UDC +1.01FLC GTPI +2475G

Sandy-Valley Atwd Barbie-ET

69250651 Very Good-87
2-04 3x 365d 32120 3.5 1118 3.1 1010

Regancrest Elton Durham-ET

2250783 Excellent-90 GM 8/01 *TR *CV *TL
PTA -697M -50F -9P 99R 8/16
PTA +1.52T +1.31UDC +1.33FLC GTPI +1523G

Elleeta Skybuck Lucy

10738372C Excellent-95 EEEVE 3E
6-11 2x 365d 30380 4.6 1397 3.1 940
4-08 2x 365d 27700 5.2 1443 3.4 944
3-02 2x 305d 23070 4.5 1045 3.6 839
Life: 1956d 146090 4.8 7056 3.3 4753

Lucy!

- 1st 125,000lb Cow North-East Nat'l 2010
- Grand & Sr Champ Int'l Show 2007
- All-American 6-Yr-Old 2007
- Res Grand Champ, North-E Fall National '07
- 1st Aged Cow, North-E Fall National '07
- HM All-American Five-Year-Old 2005
- 1st 5-Yr-Old & Res Sr Ch, Eastern Nat'l '05
- 1st 5-Yr-Old & Res Grand, VT State Show '05
- 1st 5-Yr-Old & Res Grand, NE Showcase '05
- 3rd Jr 3-Yr-Old, North-E Fall Nat'l '03

3rd Dam

Elleeta Supersire Leah VG-88-7YR-CAN
7-02 2x 365d 24727 4.3 1074 3.3 811
Life: 6 Lacs 131249 4.3 5668 3.3 4297

4th Dam

Elleeta Starbuck Lynda GP-83-2YR-CAN
2-02 2x 326d 13003 4.6 604 3.5 461

5th-8th Dams

Elleeta Threat Lisbee Excellent-93 EEEEE 2E *RC
5-02 2x 307d 18139 4.1 743 3.3 595
Life: 8 Lacs 121769 4.2 5071 3.3 4008

Blossom-Acres Sexation Lola VG-87-CAN
10-2 2x 365d 22421 3.9 875 3.3 736
Life: 9 Lacs 167894 3.6 6127 3.3 5514

Lolas Allhill Fury VG-85

7-09 2x 305d 28319 3.4 970 3.2 915
Life: 6 Lacs 121822 3.8 4623 3.3 3459

Allhill Lola Sir Winston EX-90



HARVUE DUNDEE-FOXY-ET EX-92 EEEEE 2E GMD
2ND DAM OF LOT 6 & 7

6

DUCKETT & HARDESTY
BERRYVILLE, VA 22611
540-955-3842

Eclipse Atwoods Archrival-ET

H01786521
PTA -33M +23F -1P 78R 8/16
PTA +.9PL 2.87SCS -2.4DPR 8.0%DCE
PTA +3.62T +2.70UDC +2.60FLC 77R 8/16
GTPI +1973G

Harvue-Duckett Fokie-ET

72367018 Very Good-85

Maternal Sister to Fokie

Harvue Goldwyn Foxy Lady-ET EX-93 EEEEE

Duckett-Harvue Atwod Flo-ET EX-92

HARVUE-DUCKETT ARCH FIFI

3133743571
Born: March 27, 2016

Maple-Downs-I G W Atwood-ET

8956379C Excellent-90 *TR *TV *TL *TY *TD
PTA -26M +30F +3P 99R 8/16
PTA +3.65T +2.58UDC +2.83FLC GTPI +1927G

Anya-ET

1402793646

KHW Elm-Park Acme-ET

61720218 Excellent-90 GM 4/11 *RC *TV *TL *TY *TD
PTA -412M +6F +6P 99R 8/16
PTA +1.55T +1.86UDC +.40FLC GTPI +1813G

Harvue Dundee Foxy-ET

64394973 Excellent-92 EEEEE 2E
4-08 2x 365d 43850 3.7 1626 2.9 1273
6-11 2x 352d 36770 3.6 1330 3.0 1096
2-06 2x 365d 29950 3.6 1065 2.8 840
Life: 1606d 149000 3.7 5545 3.0 4501

3rd Dam

Harvue Roy Frosty EX-97 EEEEE 3E

5-07 2x 365d 44710 5.0 2222 3.0 1332
Life: 2285 217250 4.8 10507 3.0 6447

4th Dam

Harvue Sam Heidi EX-93 EEEEE 3E DOM

5-07 2x 365d 34700 4.6 1586 3.2 1115
Life: 2480d 183870 4.5 8335 3.4 6312

5th Dam

Harvue Skybuck Harmony VG-88 EEVVV

2-00 2x 263d 17520 4.4 775 3.4 600
• 2nd Summer Yrlg Eastern National 1994

6th Dam

Harvue Melvin Hallie VG-86

4-08 2x 365d 33690 4.4 1490 3.2 1093
Life: 1234d 102120 4.2 4270 3.3 3355

7th Dam

Harvue Bell Harrison VG-86 GMD DOM

10-4 2x 365d 38040 3.4 1301 3.0 1124
Life: 3171d 264120 3.5 9273 3.1 8221

8th Dam

Harvue Libido Harrison VG-87

6-00 2x 365d 22360 3.8 843



HARVUE GOLDWYN FOXY LADY-ET EX-93
MATERNAL SISTER TO DAM OF LOT 6 & 7

7

ROBERT EMERSON II
MIDDLETOWN, DE 19709
302-378-2139

EDG Rubicon-ET

72128125 *TV *TL *TY *TD
PTA +1557M +99F +56P 99R 8/16
PTA +6.3PL 3.00SCS +1.2DPR 4.2%DCE
PTA +1.99T +1.48UDC +2.01FLC 79R 8/16
GTPI +2691G

Duckett-Harvue Atwd Flo-ET

70929524 Excellent-92 EEEEE
3-01 2x 305d 29180 3.9 1148 3.1 907
2-01 2x 305d 21560 4.3 923 3.2 688
• 3rd Summer Yrlg Eastern Fall National 2012

Maternal sister to Flo

Harvue Goldwyn Foxy Lady-ET EX-93 EEEEE

MS FLO RUBICON FANNIE-ET

840003128772978
Born: December 28, 2015

Mounfield SSI Dcy Mogul-ET

840003006972816 Excellent-91 *TR *TV *TL *TY
PTA +1292M +85F +40P 99R 8/16
PTA +2.46T +2.57UDC +2.62FLC GTPI +2514G
Sandy-Valley Robust Ruby-ET
69998487 Very Good-87 VG-MS
2-04 2x 305d 29450 3.2 950 3.1 916

Maple-Downs-I G W Atwood-ET

8956379C Excellent-90 *TR *TV *TL *TY *TD
PTA -26M +30F +3P 99R 8/16
PTA +3.65T +2.58UDC +2.83FLC GTPI +1927G

Harvue Dundee Foxy-ET

64394973 Excellent-92 EEEEE 2E
4-08 2x 365d 43850 3.7 1626 2.9 1273
6-11 2x 352d 36770 3.6 1330 3.0 1096
2-06 2x 365d 29950 3.6 1065 2.8 840
Life: 1606d 149000 3.7 5545 3.0 4501

3rd Dam

Harvue Roy Frosty EX-97 EEEEE 3E
5-07 2x 365d 44710 5.0 2222 3.0 1332
Life: 2285 217250 4.8 10507 3.0 6447

4th Dam

Harvue Sam Heidi EX-93 EEEEE 3E DOM
5-07 2x 365d 34700 4.6 1586 3.2 1115
Life: 2480d 183870 4.5 8335 3.4 6312

5th Dam

Harvue Skybuck Harmony VG-88 EEVVV
2-00 2x 263d 17520 4.4 775 3.4 600
• 2nd Summer Yrlg Eastern National 1994

6th Dam

Harvue Melvin Hallie VG-86
4-08 2x 365d 33690 4.4 1490 3.2 1093
Life: 1234d 102120 4.2 4270 3.3 3355

7th Dam

Harvue Bell Harrison VG-86 GMD DOM
10-4 2x 365d 38040 3.4 1301 3.0 1124
Life: 3171d 264120 3.5 9273 3.1 8221

8th Dam

Harvue Libido Harrison VG-87
6-00 2x 365d 22360 3.8 843



PENN-GATE RMARKER FERGGY-ET EX-93 EEEEE 2E *RC
DAM OF LOT 8

8

MATTHEW & JOHATHAN & ALICIA LAMB
OAKFIELD, NY 14125
585-704-2501

Mr Chassity Gold Chip-ET

140145553 Excellent-92 *TR *TV *TL *TY *TD
PTA -268M +0F -23P 99R 8/16
PTA +1.6PL 2.66SCS -.5DPR 3.4%DCE
PTA +2.47T +2.48UDC +2.24FLC 99R 8/16
GTPI +1876G

Penn-Gate Rmarker Ferggy-ET

136214034 Excellent-93 EEEEE 2E *RC
3-08 2x 365d 27080 3.7 1002 3.1 842
5-11 3x 365d 26780 4.2 1133 3.2 851
2-01 2x 321d 18050 3.6 653 3.2 576

Maternal sisters to Ferggy

Penn-Gate Storm Fleurel-ET EX-94 EX-MS 2E

Penn-Gate Storm Fluff-ET EX-93 2E

Penn-Gate Storm Fairy-ET EX-92 2E

Penn-Gate Storm Flirt EX-92

OAKFIELD-BRO GC FEDORA-ET

840003127422607
Born: March 1, 2016

Braedale Goldwyn

10705608C GP-CAN EXTRA'05 GM 12/11 *TV *TL
PTA -358M +13F +1P 99R 8/16
PTA +1.79T +1.51UDC +1.49FLC GTPI +1880G

Regancrest S Chassity-ET

62496899 Excellent-92 EEEVE DOM *TL *TY
3-10 2x 365d 42280 4.3 1798 2.5 1070
Life: 1071d 105520 4.2 4383 2.8 2959

Indianhead Red-Marker-ET

2284915 EX-CAN *RC *TV *TL
PTA -1806M -67F -73P 99R 8/16
PTA +.75T -.11UDC -.21FLC GTPI +849G

Penn-Gate Skychief Finesse

15790548 Excellent-95 EEEEE 3E DOM
9-00 2x 365d 36760 3.8 1386 3.3 1227
4-09 2x 365d 31290 4.9 1538 3.2 1014"
3-09 2x 352d 30500 4.3 1336 3.6 1119"
8-00 2x 305d 23600 5.6 1331 3.4 809
Life: 2245d 161510 4.5 7311 3.3 5285

Maternal sisters to Fedora

Oakfield-Bro AT Finance-ET EX-92

Oakfield-Bro AS Fire-Red-ET EX-92

Oakfield-Bro Fountain-Red-ET EX-90

Oakfield-Bro Gld Fantasy-ET EX-90

Oakfield-Bro Goldwyn 650-ET EX-90

Oakfield-Bro Son Fanatic-ET VG-87

4th Dam

Penn-Gate Elevation Flashie EX-94 5E GMD DOM

7-01 2x 365d 32410 4.3 1382 3.2 1025

Life: 3872d 260540 4.4 11435 3.3 7091

Donnandale Skychief-ET

391661C EX-CAN GM 2/01 *TL

PTA -263M -12F -10P 99R 4/14

PTA +1.11T +.85UDC -.69FLC GTPI +1339G

Penn-Gate Starbuck Finesse

14395376 Excellent-94 EEEEE 2E GMD DOM

9-00 2x 365d 36760 3.8 1386 3.3 1227

8-02 2x 305d 30040 3.8 1133 3.4 1010

3-03 2x 328d 27300 4.0 1090 3.5 942

2-02 2x 356d 23890 4.3 1029 3.5 835

Life: 2220d 166730 3.7 6252 3.5 5902



PENN-GATE STORM FLEUREL-ET EX-94 EX-MS 2E
MATERNAL SISTER TO DAM OF LOT 9

9

JULIANNE HCKENDREE SNYDER
 CHRISTIANSBURG, VA 24073
 540-382-1873

Mr Apples Armani-ET

68571374 Excellent-90 *RC *RV *TL *TY *TD
 PTA -1432M +32F -4P 98R 8/16
 PTA +1.9PL 2.83SCS +1.1DPR 5.6%DCE
 PTA +2.02T +1.97UDC +2.26FLC 96R 8/16
 GTPI +2056G

Penn-Gate Rmarker Ferggy-ET

136214034 Excellent-93 EEEEE 3E *RC
 3-08 2x 365d 27080 3.7 1002 3.1 842
 5-11 3x 365d 26780 4.2 1133 3.2 851
 2-01 2x 321d 18050 3.6 653 3.2 576

Maternal sisters to Ferggy

Penn-Gate Storm Fleurel-ET EX-94 EX-MS 2E

Penn-Gate Storm Fluff-ET EX-93 2E

Penn-Gate Storm Fairy-ET EX-92 2E

Penn-Gate Storm Flirt EX-92

OAKFIELD-BRO A FAIRY-RED-ET

840003127421823 *TL *TD
 Born: March 1, 2015
 12K GTPI +1783G

Bred: September 1, 2016 to Mr D Apple Diamondback

Maternal sisters to Fifi

Oakfield-Bro AT Finance-ET EX-92

Oakfield-Bro AS Fire-Red-ET EX-92

Oakfield-Bro Fountain-Red-ET EX-90

Oakfield-Bro Gld Fantasy-ET EX-90

Oakfield-Bro Goldwyn 650-ET EX-90

Oakfield-Bro Son Fanatic-ET VG-87

Braedale Goldwyn

10705608C GP-CAN EXTRA'05 GM 12/11 *TV *TL
 PTA -358M +13F +1P 99R 8/16
 PTA +1.79T +1.51UDC +1.49FLC GTPI +1880G

KHW Regiment Apple-Red-ET

135511521 Excellent-96 EEEEE 3E DOM *CV
 9-01 2x 365d 36750 4.3 1582 3.3 1211
 Life: 2898d 240640 4.7 11394 3.6 8559

Indianhead Red-Marker-ET

2284915 EX-CAN *RC *TV *TL
 PTA -1806M -67F -73P 99R 8/16
 PTA +.75T -.11UDC -.21FLC GTPI +849G

Penn-Gate Skychief Finesse

15790548 Excellent-95 EEEEE 3E DOM
 9-00 2x 365d 36760 3.8 1386 3.3 1227
 4-09 2x 365d 31290 4.9 1538 3.2 1014"
 3-09 2x 352d 30500 4.3 1336 3.6 1119"
 8-00 2x 305d 23600 5.6 1331 3.4 809
 Life: 2245d 161510 4.5 7311 3.3 5285

4th Dam

Penn-Gate Elevation Flashie EX-94 5E GMD DOM

7-01 2x 365d 32410 4.3 1382 3.2 1025

Life: 3872d 260540 4.4 11435 3.3 7091

Donnandale Skychief-ET

391661C EX-CAN GM 2/01 *TL

Penn-Gate Starbuck Finesse

14395376 Excellent-94 EEEEE 2E GMD DOM

9-00 2x 365d 36760 3.8 1386 3.3 1227

8-02 2x 305d 30040 3.8 1133 3.4 1010

3-03 2x 328d 27300 4.0 1090 3.5 942

2-02 2x 356d 23890 4.3 1029 3.5 835

Life: 2220d 166730 3.7 6252 3.5 5902



COOLEA FARMS SANCHEZ LIZA-ET EX-92 EX-MS
DAM OF LOT 10



LYLEHAVEN LILA Z-ET EX-94
3RD DAM OF LOT 10

10

IAGER BROTHERS
BOONSBORO, MD 21713
301-725-6751

Eclipse Atwoods Archrival-ET

H01786521
PTA -33M +23F -1P 78R 8/16
PTA +.9PL 2.87SCS -2.4DPR 8.0%DCE
PTA +3.62T +2.70UDC +2.60FLC 77R 8/16
GTPI +1973G

Coolea Farms Sanchez Liza-ET

11145920 Excellent-92 EX-MS
2-03 2x 365d 31421 3.9 1233 3.3 1006
3-07 2x 305d 30130 3.5 1052 3.0 904
• 1st Sr. 2-Yr-Old Illinois State Show 2013
• HM Intermediate Champ Illinois State Show 2013
• 1st Sr 2-Yr-Old Illinois State Fair 2013

MD-MAPLE-LAWN ARCH LILA-ET

840003127381782
Born: March 8, 2016

Maple-Downs-I G W Atwood-ET

8956379C Excellent-90 *TR *TV *TL *TY *TD
PTA -26M +30F +3P 99R 8/16
PTA +3.65T +2.58UDC +2.83FLC GTPI +1927G

Any-ET

1402793646

Gen-Mark Stmatic Sanchez

134422312 Excellent-94 EEEE *TR *TV *TL *TY *TD
PTA +515M -16F +8P 99R 8/16
PTA +2.04T +1.16UDC +1.84FLC GTPI +1632G

Calbrett Goldwyn Liza-ET

103974920 Very Good-88 @ 2 Yrs
2-04 2x 365d 32165 4.1 1327 3.3 1069
• 1st Jr. 2-Year-Old Autumn Opportunity '08
• Top Priced cow in Canada in 2008 at \$175,000

Full Sister to Goldwyn Liza

Calbrett Goldwyn Layla EX-96-CAN 95-MS

4-07 2x 365d 33660 3.8 1285 3.4 1135
• All-American Aged Cow 2015
• 3rd Aged Cow Royal 2015
• Reserve All-Canadian Mature Cow 2013
• Nominated All-American Aged Cow 2013
• 1st Mature Cow, Royal Winter Fair 2013
• Grand Champion, ON Summer Show 2013
• HM All-Canadian 4-Yr-Old 2011

Comestar Goldwyn Lilac VG-89 15*

• Dam of Sires: Lector, Lavaman & Larson
• All-Ontario Sr 2-Yr-Old 2008
• Nom All-Canadian Sr 2-Yr-Old 2008

3rd-6th Dams

Lylehaven Lila Z-ET EX-94-CAN 9* *TV

4-05 2x 365d 49100 4.0 1960 3.5 1695
Life: 3 Lacs 166194 3.9 6504 3.4 5701
• HM All-Canadian 5-Year-Old 2007
• HM All-Canadian 4-Year-Old 2006
• All-Canadian Junior 2-Year-Old 2004

Lylehaven Form Laura-ET EX-94 EEEEE 3E 6*

8-08 2x 365d 39320 3.9 1529 2.9 1144
Life: 2267d 195690 4.0 7731 2.9 5646
• HHM All-American 4-Year-Old 2003
• Res All-Canadian Jr 3 Yr Old Cow 2002

Thiersant Lili Starbuck-ET EX-94 EEEVE 5E 2*

9-11 2x 365d 30910 4.5 1385 3.3 1023
Life: 3428d 238806 4.7 11291 3.2 7673

Ivyhall Astro Jet Ronie VG-86-6YR-CAN 1*

5-04 2x 305d 18472 4.2 769 3.1 578



THIERSANT LILI STARBUCK-ET EX-94 EX-MS SE 1*
2ND DAM OF LOT 11

11

MATTHEW & JENNIFER HULL
ENOSBURG FALLS, VT 05450
802-933-4865

Sandy-Valley Chipper-P-ET

70358185 *RC *PO *TY *TD
PTA +677M -17F +23P 96R 8/16
PTA +4.7PL 2.91SCS +1.8DPR 6.3%DCE
PTA +.82T +1.88UDC -.01FLC 92R 8/16
GTPI +2003G

Lylehaven Braxton Lira-ET

70908249 Good Plus-82
3-01 2x 305d 19750 4.0 782 2.9 567

Full sister to Lira

Lylehaven Braxton Lydley-ET EX-91
Lylehaven Braxton Lexus-ET VG-86

LYLEHAVEN CHIPPER LUNA

72136884
Born: January 18, 2015

Due: March 27, 2017 to **View-Home Monterey-ET**

Sandy-Valley Colt P-Red-TW

68731810 *PC *TV *TL *TY *TD
PTA +238M -47F +5P 99R 8/16
PTA +.31T +.99UDC +.26FLC GTPI +1792G

Sandy-Valley Pla Cricket-ET

69250561 Excellent-92 EX-MS
3-09 2x 365d 42910 3.8 1639 3.0 1291
Life: 1457d 141690 3.9 5458 3.2 4524

Regancrest S Braxton-ET

61898423 Excellent-95 *TR *TV *RL *TY *TD
PTA +1012M -12F +2P 99R 8/16
PTA +2.59T +1.10UDC +1.47FLC GTPI +1451G

Thiersant Lili Starbuck-ET

6332629C Excellent-94 EEVEE 5E 1*
9-11 2x 365d 30910 4.5 1385 3.3 1023
5-00 2x 358d 30190 4.6 1387 3.2 978
8-00 2x 365d 29810 4.9 1453 3.4 1000
6-01 2x 365d 28540 4.6 1313 3.1 890
3-11 2x 338d 26376 4.5 1198 3.1 810
11-4 2x 365d 26320 4.8 1253 3.3 880
14-2 2x 365d 24770 4.7 1171 3.2 794
2-03 2x 365d 17170 5.0 852 3.4 580
Life: 3428d 238806 4.7 11291 3.2 7673

Maternal sisters to Lira

Lylehaven Lassie-ET EX-94

Lylehaven Form Laura-ET EX-94 EX-MS 3E GMD
Life: 195690 4.0 7731 3.1 6015

- Res All-Canadian Jr 3-Yr-Old 2002
- HM All-Ameican 4-Yr-Old 2002

Laura's daughter

Lylehave Lila Z EX-94-CAN 8*

4-05 365d 49101 4.0 1960 3.5 1695

- Sold for \$1.15M Triple Crown Sale 2005
- All-Canadian Jr 2-Yr-Old 2004 & Jr Yrlg 2003
- HM All-Canadian 4-Yr-Old 2006
- Nom All-Canadian Jr Calf 2002 & 5-Yr-Old 2007
- Nom All-American Jr. Yrlg 2003

3rd Dam

Ivyhall Astro Jet Ronie VG-86-6YR-CAN

5-04 2x 305d 18472 4.2 769 3.1 578
Life: 5 Lact 85330 4.2 3599 3.4 2872



LYLEHAVEN LASSIE-ET EX-94 EEEEE 4E
2ND DAM OF LOT 12



12

OAKFIELD CORNERS DAIRY
OAKFIELD, NY 14125
585-704-2501

Canyon-Breeze At Airlift-ET

62897620 Very Good-89 *TV *TL *TY *TD
PTA +868M +26F +3P 98R 8/16
PTA -.1PL 2.87SCS -1.4DPR 7.0%DCE
PTA +3.46T +1.91UDC +4.12FLC 98R 8/16
GTPI +2031G

Lylehaven Loryssa-ET

62724145 Excellent-90
4-06 3x 365d 27900 3.9 1097 3.2 891
2-06 3x 365d 21220 4.2 892 3.4 731

Maternal sister to Lizbit

Lylehaven Pronto Lorena-ET EX-92 EX-MS

3-05 2x 365d 37060 3.9 1461 3.2 1169
• Grand Champ SE PA Champ Show 2012
• 5th Sr 3-Yr-Old E Fall Nat Show 2012
• Res All-PA Sr 2-Yr-Old 2011
• 5th Sr 2-Yr-Old E Fall Nat Show 2011
• 5th Winter Calf E Fall Nat Show 2009

OCD AIRLIFT LASSO-ET

840003127422555
Born: December 1, 2015

Maple-Downs-I G W Atwood-ET

8956379C Excellent-90 *TR *TV *TL *TY *TD
PTA -26M +30F +3P 99R 8/16
PTA +3.65T +2.58UDC +2.83FLC GTPI +1927G

Canyon-Breeze S Auburn-ET

63175334 Excellent-90 EEEEE DOM
3-04 3x 365d 35090 3.8 1347 2.9 1024
2-00 3x 365d 33240 3.4 1146 2.8 918

Innwood Terrason

6581869 Excellent-96 *TV *TL
PTA -1289M -36F -35P 99R 8/16
PTA +1.21T +.70UDC +.67FLC GTPI +1210G

Lylehaven Lassie-ET

131314720 Excellent-94 EEEEE 4E
8-04 2x 365d 45720 5.0 2271 3.2 1442
1st VT Fat & 3rd VT Prot
5-09 2x 365d 39450 4.2 1671 3.2 1269
10-03 2x 365d 32980 4.4 1454 3.2 1056
11-06 2x 305d 32270 4.1 1321 3.1 1006
4-02 2x 365d 30530 4.6 1392 3.3 1014
3-00 2x 343d 25640 4.4 1127 3.4 867
2-01 2x 343d 21980 4.6 1003 3.4 750
Life: 3171d 280510 4.5 12669 3.3 9300

Lassie's Show Winnings!

- Nom All-American Aged Cow 2007
- 1st Aged Cow, Res Sr Champ & Res Grand E Fall National 2007
- 1st Jr 2-Yr-Old & Res Int. Champ NE Fall Nat'l 2003
- 1st Jr 2-Yr-Old E Fall National 2003
- 1st 125,000LB Cow NE Fall National 2008

Maternal Sister to Lassie

Lylehaven Form Laura-ET EX-94 EX-MS 3E GMD

Life: 195690 4.0 7731 3.1 6015

- Res All-Canadian Jr 3-Yr-Old 2002
- HM All-American 4-Yr-Old 2002

Laura's daughter

Lylehave Lila Z EX-94-CAN 8*

4-05 365d 49101 4.0 1960 3.5 1695

- Sold for \$1.15M Triple Crown Sale 2005
- All-Canadian Jr 2-Yr-Old 2004 & Jr Yrlg 2003
- HM All-Canadian 4-Yr-Old 2006
- Nom All-Canadian Jr Calf 2002 & 5-Yr-Old 2007
- Nom All-American Jr. Yrlg 2003

3rd Dam

Thiersant Lili Starbuck-ET EX-94 EEVEE 5E 1*

9-11 2x 365d 30910 4.5 1385 3.3 1023
Life: 3428d 238806 4.7 11291 3.2 7673

4th Dam

Ivyhall Astro Jet Ronie VG-86-6YR-CAN

5-04 2x 305d 18472 4.2 769 3.1 578



**LYLEHAVEN GWYN LAURA-ET EX-90 EX-MS
DAM OF LOT 13**

13

ROBERT SENSENIG
QUARRYVILLE, PA 17566
717-529-6973

FAY-DEL DMAN LEXUS-ET

73842720 99%RHA-I
Born: December 29, 2015

Maternal sisters to Laura

Lylehaven Lila Z EX-94 CAN 9*

4-05 2x 365d 49101 4.0 1960 3.5 1695
 • Sold for \$1.15 million @ The Triple Crown Sale 2012
 • All-Can Jr. 2-Yr-Old & All-Can Milking Yrlg
 • Res. Grand Champ Ontario Summer Show 2007
 • Res. Grand Champ Atlantic Spring Show 2007
 • Nominated All-Canadian 5-Year-Old 2007

Lylehaven Lexus-ET EX-92 EEEVV 2E

6-08 2x 365d 43510 4.0 1723 2.8 1219
 Life: 1368d 129450 3.9 5072 3.0 3835

Val-Bisson Doorman-ET

107281711C 99%RHA-I VG-87-CAN ST'16*TV *TL *TY
 PTA -25M +42F +25P 99R 8/16
 PTA +2.5PL 2.58SCS -0.6DPR 5.8%DCE
 PTA +3.54T +2.46UDC +2.23FLC 98R 8/16
 GTPI +2354G

Lylehaven Gwyn Laura-ET

66535404 Excellent-90 EVVEE
 4-04 2x 305d 27180 3.6 986 2.8 765
 2-03 2x 344d 27170 3.9 1055 3.0 816
 3-04 2x 317d 24180 4.1 994 3.0 732
 5-05 2x 279d 23310 3.6 832 2.8 654
 Life: 1336d 105750 3.8 4024 2.9 3095

De-Su 521 Bookem-ET

66636657 99%RHA-I Very Good-88 *TR *TV *TL *TY
 PTA +1311M +30F +48P 99R 8/16
 PTA +1.59T +1.10UDC +1.14FLC GTPI +2342G

Val-Bisson Shottle Imelda-ET

106173432 Very Good-89-CAN

Braedale Goldwyn

10705608C GP-CAN EXTRA'05 GM 12/11 *TV *TL
 PTA -358M +13F +1P 99R 8/16
 PTA +1.79T +1.51UDC +1.49FLC GTPI +1880G

Lylehaven Form Laura-ET

126786486 Excellent-94 EEEEE 3E 5*
 8-08 2x 365d 39320 3.9 1529 2.9 1144
 6-02 2x 365d 35510 4.2 1484 3.1 1088
 4-02 2x 365d 32650 3.8 1255 3.0 980
 Life: 2267d 195690 4.0 7731 2.9 5646
 • HHM All-American 4-Year-Old 2003
 • Res All-Canadian Jr 3 Yr Old Cow 2002

4th Dam

Ivyhall Astro Jet Ronie VG-86-6YR-CAN

5-04 2x 305d 18472 4.2 769 3.1 578
 Life: 5 Lact 85330 4.2 3599 3.4 2872

Shen-Val NV LM Formation-ET

2163822 Very Good-85 GM 2/01 *TV *TL

Thiersant Lili Starbuck-ET

6332629C Excellent-94 EEVEE 5E 1*
 9-11 2x 365d 30910 4.5 1385 3.3 1023
 5-00 2x 358d 30190 4.6 1387 3.2 978
 8-00 2x 365d 29810 4.9 1453 3.4 1000
 Life: 3428d 238806 4.7 11291 3.2 7673



LADYS-MANOR GR LACHELLE-ET VG-85 VG-MS
DAM OF LOT 14



GLEN-TOCTIN SUPER LAVENA-ET EX-90 EX-MS DOM
2ND DAM OF LOT 14

14

GLEN-TOCTIN FARM
JEFFERSON, MD 21755
301-662-6493

View-Home Monterey-ET

69087180 99%RHA-I *TV *TL *TY *TD
PTA +1012M +65F +43P 99R 8/16
PTA +5.4PL 2.94SCS +.4DPR 2.9%DCE
PTA +3.35T +3.03UDC +2.44FLC 79R 8/16
GTPI +2628G

Ladys-Manor GR Lachelle-ET

70875771 99%RHA-NA Very Good-85 VG-MS
GTPI +2163

GLEN-TOCTIN MONTEREY LACHEL

143790417 99%RHA-I *TR *TL *TD
Born: January 7, 2016

De-Su Bkm Mccutchen 1174-ET

69990138 99%RHA-I *TV *TL *TY *TD
PTA +961M +55F +34P 99R 8/16
PTA +3.23T +2.91UDC +2.72FLC GTPI +2468G

Pine-Tree 2149Robst 4846-ET

69804610 Very Good-86 VG-MS DOM
2-04 3x 365d 32000 4.8 1520 3.2 1036

Ladys-Manor Rd Grafeeti-ET

68988032 99%RHA-NA *RR *CD *TV *TL *TY *TD
PTA +238M +53F +20P 99R 8/16
PTA +1.08T +1.56UDC +1.31FLC GTPI +2203G

Glen-Toctin Super Lavena-ET

140738432 Excellent-90 EX-MS DOM
4-08 2x 365d 30980 4.1 1261 3.1 954
3-06 2x 305d 30230 3.9 1172 2.9 868
2-02 2x 365d 27310 3.8 1046 3.2 862

3rd Dam

Glen-Toctin Shottle Liva-ET EX-91 EEEEE DOM

3-00 2x 365d 41140 4.4 1810 3.3 1343
1-11 2x 365d 28370 4.4 1252 3.5 988

4th Dam

Glen-Toctin Aaron Lilit-ET EX-90 GMD DOM

2-05 2x 365d 30180 5.6 1684 3.4 1025
• Embryos exported worldwide

5th Dam

Unicorn Celsius Lei-ET VG-86 GMD DOM

2-00 2x 365d 27840 4.5 1240 3.6 1001

6th Dam

Unicorn Blackstar Lilly VG-87 VG-MS GMD DOM

2-00 2x 365d 29150 4.0 1157 3.3 974

7th Dam

Catoctin Melwood Loni-ET VG-87 GMD

2-00 2x 365d 26760 4.3 1162

8th Dam

Unicorn Lucky Lynn-ET VG-85 GMD

5-06 2x 365d 37580 3.5 1320

9th Dam

Unicorn Chairman Lynn EX-90 GMD

7-02 2x 365d 36990 3.8 1416



CLEAR-ECHO NOMINEE 3279-ET
DAM OF LOT 15

15

CLEAR-ECHO FARM LLC
C/O KEVIN PECK
SCHUYLerville, NY 12871
518-669-4468

Bacon-Hill Pety Modesty-ET

840003013654627 *TV *TL *TY *TD
PTA +1864M +98F +64P 76R 8/16
PTA +8.0PL 3.04SCS +2.1DPR 3.6%DCE
PTA +2.35T +2.33UDC +2.02FLC 75R 8/16
GTPI +2847G

Clear-Echo Nominee 3279-ET

72766937 99%RHA-I
13K GTPI +2536G +1170M +62F +42P 77R 8/16
PTA +638NM +.07%F +.02%P
PTA +4.2PL 2.82SCS +2.8DPR 6.3%DCE
PTA +1.97T +1.60UDC +2.71FLC 75R 8/16

CLEAR-ECHO MODESTY 3813-ET

840003129746218 99%RHA-I
Born: March 20, 2016
30K GTPI +2603G +1640M +77F +49P 73R 8/16
PTA +748NM +.06%F +.00%P
PTA +5.6PL 2.98SCS +1.9DPR 5.5%DCE
PTA +2.11T +1.82UDC +2.09FLC 71R 8/16

Siemers Mogul Pety

840003010660326 Very Good-88 *TV *TL *TY *TD
PTA +1146M +55F +42P 80R 8/16
PTA +2.60T +2.78UDC +2.00FLC GTPI +2476G

Bacon-Hill Suprs Moddesty-ET

840003010945893 Very Good-85 VG-MS DOM

De-Su Nominee-ET

70626023 99%RHA-I *TR *TV *TL *TY *TD
PTA +728M +37F +31P 92R 8/16
PTA +1.19T +1.25UDC +1.28FLC GTPI +2394G

OCD M Christina Aguilera-ET

840003009533299 99%RHA-NA VG-87 DOM
2-01 3x 365d 34240 4.3 1470 3.2 1100

3rd Dam

Vision-Gen SH FRD A12276-ET

4th Dam

Applois Jet Stream Alda-ET VG-85 DOM

2-02 2x 305d 20820 4.6 954 3.5 731

5th Dam

Morningview Otsd April-ET VG-87 EX-MS

2-03 2x 365d 36010 4.3 1560 3.6 1291

6th Dam

Morningview Gibbon Judy-ET VG-85 GMD DOM

2-04 2x 305d 25010 3.9 964 3.2 799

7th Dam

Morningview Converse Judy EX-93 GMD DOM

4-05 2x 365d 38100 4.1 1565 3.3 1269

8th Dam

Morningview Aerostar Jix-ET VG-87 EX-MS

5-06 2x 340d 32040 3.9 1249 3.4 1089

Life: 11030 3.7 41100 3.5 3880

9th Dam

Walnut-Knoll Judy-ET VG-87 GMD DOM

4-08 2x 357d 37210 4.0 1480 3.2 1187

10th Dam

Walnut-Knoll Rorae Jenny EX-91 2E GMD DOM

7-04 2x 365d 29830 4.1 1210 3.0 885

Life: 156590 4.0 6248 3.3 1696

11th Dam

Lynberry Gem VG-89

6-02 2x 365d 27700 4.1 1143



DOUBLE-EAGLE TANGO HULA-ET VG-85 VG-MS @ 2-06
DAM OF LOTS 16 & 17



COOKIECUTTER MOG HANKER-ET VG-88 EX-MS DOM
2ND DAM OF LOTS 16 & 17

16

ENDCO JEDI HULA 76292-ET

840003137205867 99%RHA-I
Born: June 6, 2016
12K GTPI +2658G +2277M +70F +74P 73R 8/16
PTA +719NM -.05%F +.02%P
PTA +3.5PL 2.89SCS +.6DPR 5.2%DCE
PTA +2.73T +1.66UDC +1.66FLC 71R 8/16

ENDEAVOR GENOMIC HOLSTEINS LLC
C/O TODD WIDHOLM
CLIFTON, IL 60927
815-697-2700

17

ENDCO COMANCHE HISTORY-ET

840003134893093 99%RHA-NA
Born: March 23, 2016
12K GTPI +2605G +1396M +88F +46P 73R 8/16
PTA +755NM +.13%F +.01%P
PTA +5.1PL 2.80SCS +1.1DPR 5.0%DCE
PTA +2.36T +1.63UDC +1.73FLC 71R 8/16

Full sister to History

Endco Comanche Hera-ET

• Sold for \$43,000 at National Convention Sale 2016

S-S-I Montross Jedi-ET

840003123886035 99%RHA-I *TV *TL *TY *TD
PTA +2497M +84F +81P 77R 8/16
PTA +6.3PL 2.96SCS +1.8DPR 4.4%DCE
PTA +2.15T +1.44UDC +1.90FLC 75R 8/16
GTPI +2806G

And

Seagull-Bay Comanche-ET

840003124720312 99%RHA-NA *TV *TL *TY *TD
PTA +1482M +100F +43P 75R 8/16
PTA +7.4PL 2.90SCS +1.9DPR 5.1%DCE
PTA +1.38T +.95UDC +1.64FLC 74R 8/16
GTPI +2602G

Double-Eagle Tango Hula-ET

840003012171428 Very Good-85 VG-MS @ 2-06
10K GTPI +2693G +1901M +71F +63P 77R 8/16
PTA +3.8PL 2.81SCS +.4DPR 5.7%DCE +716NM
PTA +3.58T +2.73UDC +2.02FLC 77R 8/16
2-04 2x 42d 3155 4.5 142 2.9 90 RIP

Mr Welcome Hill Tango-ET

70750485 *TV *TL *TY *TD
PTA +2327M +69F +59P 99R 8/16
PTA +1.83T +1.54UDC +1.34FLC GTPI +2530G

Cookiecutter Mog Hanker-ET

840003010693854 Very Good-88 EX-MS DOM
2-02 2x 365d 30760 4.2 1280 3.2 993

3rd Dam

Cookiecutter Mom Halo-ET VG-88 EX-MS

2-00 2x 365d 35410 5.2 1832 3.5 1241

4th Dam

Cookiecutter Gld Holler-ET VG-88 EX-MS DOM

2-03 2x 365d 40730 3.5 1410 3.3 1249

5th-10th Dams

Ms Kings-Rnsm Champ Haley-ET EX-90 GMD DOM

2-06 2x 365d 33190 4.7 1545 3.1 1045

3-11 2x 365d 43690 3.7 1625 3.1 1357

Regancrest-JDV Hanna-ET EX-90 EX-MS

4-07 2x 365d 45110 4.3 1922 3.2 1449

Long-Haven Rudolph Dee-ET EX-90 2E GMD DOM

Life: 166900 4.3 7099 3.5 5884

Regancrest Elton Disrael-ET VG-88 EX-MS DOM

2-04 2x 365d 33617 4.5 1499 3.5 1169

Snow-N Denises Dellia EX-95 2E GMD DOM

Life: 180240 3.9 7108 3.2 5723

Snow-N Dorys Denise EX-90 2E GMD-DOM

Life: 114010 3.6 4153 3.2 3649



COOKIECUTTER MOGUL HANDY-ET EX-92 EX-MS DOM
2ND DAM OF LOT 18

18

ENDEAVOR GENOMIC HOLSTEINS LLC
C/O TODD WIDHOLM
CLIFTON, IL 60927
815-697-2700

Webb-Vue Spark 2060-ET

72850448 *TV *TL *TD
PTA +2210M +74F +61P 79R 8/16
PTA +5.5PL 2.69SCS -.6DPR 4.6%DCE
PTA +2.03T +1.46UDC +.79FLC 78R 8/16
GTPI +2559G

Cookiecutter Handlouis-ET

840003014260293 99%RHA-I Good Plus-83 @ 2-06
9K GTPI +2521G +203M +67F +24P 76R 8/16
PTA +6.0PL 2.76SCS +2.7DPR 4.9%DCE
PTA +2.65T +2.53UDC +1.52FLC
2-02 2x 111d 7921 4.5 353 2.9 301 RIP

ENDCO SPARK HAND 349-ET

840003135087059 99%RHA-I
Born: December 29, 2015
30K GTPI +2544G +1024M +64F +40P 74R 8/16
PTA +709NM +.09%F +.03%P
PTA +6.3PL 2.73SCS +2.2DPR 4.6%DCE
PTA +1.96T +1.94UDC +1.17FLC 72R 8/16

Seagull-Bay Supersire-ET

69981349 Very Good-88 GM *TV *TL *TY *TD
PTA +2375M +114F +73P 99R 8/16
PTA +1.32T +.66UDC +.32FLC GTPI +2657G

Webb-Vue Gabor Mycala-ET

69334873 Very Good-87 GMD DOM
2-02 3x 351d 33670 4.8 1602 3.0 1026

Mr Numero Uno St-Louis-ET

840003008897845 99%RHA-I *TV *TL *TY *TD
PTA -71M +45F +15P 86R 8/16
PTA +2.19T +2.05UDC +1.16FLC GTPI +2405G

Cookiecutter Mogul Handy-ET

840003010693853 Excellent-92 EX-MS DOM
2-05 3x 313d 27790 4.5 1254 3.4 938

3rd Dam

Cookiecutter Mom Halo-ET VG-88 EX-MS

2-00 2x 365d 35410 5.2 1832 3.5 1241

4th Dam

Cookiecutter Gld Holler-ET VG-88 EX-MS DOM

2-03 2x 365d 40730 3.5 1410 3.3 1249

5th Dam

Ms Kings-Rnsm Champ Haley-ET EX-90 GMD DOM

2-06 2x 365d 33190 4.7 1545 3.1 1045

3-11 2x 365d 43690 3.7 1625 3.1 1357

6th Dam

Regancrest-JDV Hanna-ET EX-90 EX-MS

4-07 2x 365d 45110 4.3 1922 3.2 1449

7th Dam

Long-Haven Rudolph Dee-ET EX-90 2E GMD DOM

Life: 166900 4.3 7099 3.5 5884

8th Dam

Regancrest Elton Disrael-ET VG-88 EX-MS DOM

2-04 2x 365d 33617 4.5 1499 3.5 1169

9th Dam

Snow-N Denises Dellia EX-95 2E GMD DOM

Life: 180240 3.9 7108 3.2 5723

10th Dam

Snow-N Dorys Denise EX-90 2E GMD-DOM

Life: 114010 3.6 4153 3.2 3649



MS ROLL-N-VEW ALTHEA-RED-ET EX-91 EX-MS
DAM OF LOT 19



KHW REGIMENT APPLE-RED-ET EX-96 3E DOM
3RD DAM OF LOT 19

19

ROBERT & SARAH EMERSON, JT & NICK RAGGI
MIDDLETOWN, DE 19709
302-893-1540

Luck-E Awesome-Red

72186769 *CV *TV *TL *TY *TD
PTA -849M -7F -21P 79R 8/16
PTA -.7PL 3.19SCS -1.6DPR 10.2%DCE
PTA +3.09T +3.31UDC +1.54FLC 78R 8/16
GTPI +1653G

MS Roll-N-Vew Althea-Red-ET

72193370 Excellent-91 EX-MS *PC *TV *TL
2-00 2x 320d 24720 4.8 1193 3.2 789
3-02 2x 73d 7093 3.1 221 2.9 191 RIP
• 2nd Jr 3-Yr-Old WI R&W Champ Show 2016
• Nom All-American R&W Jr 2-Yr-Old 2015
• 1st Jr 2-Yr-Old Mid-West Fall National 2015
• Topped 2015 National R&W Sale

RAG-EM AMY-RED-ET

840003136684577 *PO
Born: June 2, 2016

Apples Absolute-Red-ET

139358472 Excellent-94 *CV *TL *TY *TD
PTA -1578M +6F -12P 99R 8/16
PTA +2.77T +2.72UDC +2.24FLC GTPI +1534G

Luck-E Advent Asia-ET

63437444 *RC
6-02 2x 365d 40150 4.9 1984 3.1 1261
Life: 1282d 113730 5.1 5814 3.2 3645

Lirr Special Effectp-Red-ET

70504985 *PO *TV *TL *TY *TD
PTA -917M +13F -8P 99R 8/16
PTA +.81T +2.08UDC +.70FLC GTPI +2027G

Ms Apples Alexis

140532308 Very Good-87 *RC
2-03 2x 365d 31010 4.9 1518 3.5 1090
Full sister to Alexis

Ms Apples Azalea-ET EX-91

• HHM All-American 4-Year-Old 2003
• Res All-Canadian Jr 3 Yr Old Cow 2002

Apple!

- 2013 HI Red Impact Cow of the Year
- Unanimous All-American R&W 125,000lb 2013
- Res. Sr & Res Grand Champ WDE R&W Show 2013
- Grand Champion, WDE R&W Show 2011
- All-American R&W Aged Cow 2011
- HI World Champion R&W Cow 2010
- Nom All-American Jr 3-Yr-Old 2009
- 1,000,000 Sale Topper Global Glamour 2008
- Unanimous All-American Jr 2-Yr-Old 2006
- All-American R&W Jr. 2-Yr-Old 2006
- All-American B&W Jr 2-Yr-Old 2006

3rd-9th Dams

KHW Regiment Apple-Red-ET EX-96 3E DOM

9-01 2x 365d 36750 4.3 1582 3.3 1211
Life: 2823d 235310 4.7 11112 3.6 8359

Kamps-Hollow Altitude-ET EX-95 2E DOM *RC

7-00 2x 365d 39690 4.7 1849 3.5 1385
Life: 1844d 144460 4.4 6295 3.7 5288

Clover-Mist Alisha-ET EX-93 3E GMD DOM *RC

8-07 2x 365d 36920 4.2 1553 3.4 1258
Life: 2999d 226470 4.7 10659 3.6 8149

Clover-Mist Augy Star-ET EX-94 4E DOM *RC

7-10 3x 365d 43140 5.0 2136 3.3 1421
Life: 2486d 206250 4.7 9793 3.5 7187

D-R-A August EX-96 4E DOM

8-05 2x 365d 27460 4.3 1187 3.2 871
Life: 3443d 190200 4.4 8281 3.3 4457

- Nominated All-American Aged Cow 1986
- All-Wisconsin Aged Cow 1987

D-R-A Ideal Precious Leader EX-90 2E

7-06 2x 358d 20090 3.9 787 3.4 675

D-R-A Princess Lad Leader EX-90 3E

9-05 2x 305d 19160 4.2 809



T-TRIPLE-T GOLD PRIZE EX-94 EX-MS 2E
DAM OF LOT 20



T-TRIPLE-T DUNDEE PAIGE EX-96 EEEEE 3E
2ND DAM OF LOT 20

20

ENTOURAGE-LC
C/O KATHY STILES IAGER
GAITHERSBURG, MD 20882
301-963-6776

Pine-Tree Sid

62175895 VG-86-CAN ST'10 *TV *TY
PTA -456M +5F -7P 99R 8/16
PTA -2.4PL 2.90SCS -4.2DPR 6.6%DCE
PTA +2.26T +2.00UDC +.08FLC 99R 8/16
GTPI +1598G

T-Triple-T Gold Prize

138776365 Excellent-94 EEEEE 2E
4-01 2x 365d 30330 4.3 1311 3.2 976
5-05 2x 365d 25150 4.6 1145 3.2 806
7-05 2x 306d 23750 4.7 1113 2.9 692
2-02 2x 305d 21340 3.9 824 3.1 661
Life: 1611d 116090 4.4 5063 3.2 3686

Full sister to Prize

T-Triple-T Platinum-ET EX-92

ENTOURAGE-LC PERSISTENT-ET

840003127699373
Born: September 2, 2015

Regancrest-Mr Drham Sam-ET

207184639 GM 8/06 *TR *TV *TL
PTA -482M +3F -10P 99R 8/16
PTA +.52T +.35UDC +.92FLC GTPI +1478G

Pine-Tree Finley Minnie-ET

61733050 Excellent-90 EX-MS DOM
4-09 2x 305d 26120 3.5 911 3.0 786

Braedale Goldwyn

10705608C GP-CAN EXTRA'05 GM 12/11 *TV *TL
PTA -358M +13F +1P 99R 8/16
PTA +1.79T +1.51UDC +1.49FLC GTPI +1880G

T-Triple-T Dundee Paige

136508805 Excellent-96 EEEEE 3E
7-09 2x 365d 33420 4.6 1551 3.0 1017
6-00 2x 365d 29020 4.4 1272 3.1 903
4-08 2x 305d 22050 4.3 958 3.0 655
2-06 2x 305d 19850 4.0 785 3.1 612
Life: 2129d 145510 4.5 6620 3.2 4701

- Nominated All-American 125,000lb Cow 2013
- 3rd 125,000lb International Holstein Show 2013
- Nom All-American Aged Cow 2011
- 4th Aged Cow, International Show 2011
- Grand Champ, Mid-E Summer Nat'l 2011

Maternal sisters to Persistent

T-Triple-T Durham Poppi EX-95

- Two Time All-American Nominee

Entourage-LC Petra Shock-ET VG-87 @ 2 Yrs

Entourage-LC Poppy Shock-ET VG-87 @ 2 Yrs

Prize!

- All-American 4-Yr-Old 2012
- Nominated All-American 5-Yr-Old 2013
- 3rd 5-Yr-Old International Holstein Show 2013
- 1st 4-Yr-Old International Holstein Show 2012
- 1st Sr 2-Yr-Old, Mid-E Summer Nat'l 2010
- Unanimous All-American Winter Yrlg 2009
- 2009 People's Choice Winner
- All-Canadian Winter Yearling 2009
- Junior Champion International Show 2009
- Junior Champion Royal Winter Fair 2009
- 1st Winter Yrlg NY Int'l Spring Show 2009
- 1st Winter Yrlg Mid-E Summer Nat'l 2009

3rd Dam

T-Triple-T Linjet Phoebe-ET EX-91 EX-MS 2E

5-06 2x 305d 29200 3.9 1136 2.8 817
Life: 1752d 132560 3.9 5193 2.9 3805

4th Dam

Hesters Mark Prudence EX-95 4E GMD DOM

7-06 3x 365d 49771 3.8 1885 2.8 1396
Life: 3183d 301342 3.4 10318 3.1 9290

- 1st 125,000 Lb Cow, Mid-E Sprg Nat'l '96

5th Dam

Chel-Brook Chairman Peach VG-87 EX-MS DOM

4-07 2x 305d 25790 3.4 874 2.9 744



LE-O-LA SUPERSON GOLDEN-ET VG-88 VG-MS
2ND DAM OF LOT 21



LE-O-LA ATWOOD GYPSY VG-87
3RD DAM OF LOT 21

21

ENDEAVOR GENOMIC HOLSTEINS LLC
C/O TODD WIDHOLM
CLIFTON, IL 60927
815-697-2700

Westenrade Altaspring

949033666 99%RHA-I *TV *TL *TY *TD
PTA +1471M +74F +52P 79R 8/16
PTA +3.6PL 2.99SCS +.9DPR 6.0%DCE
PTA +2.35T +2.78UDC +1.93FLC 76R 8/16
GTPI +2588G

Tramilda-N Sterling Goldie

840003014023034 *TV *TL *TY *TD
9K GTPI +2484G +2269M +57F +63P 77R 8/16
PTA +618NM -.09%F -.02%P
PTA +4.3PL 3.00SCS -.1DPR 4.2%DCE
PTA +2.61T +1.21UDC +1.18FLC 76R 8/16

ENDCO GOLDEN SPRING-ET

840003133641223 99%RHA-I
Born: February 13, 2016
12K GTPI +2616G +1833M +72F +61P 74R 8/16
PTA +705NM +.01%F +.02%P
PTA +4.3PL 2.93SCS +.4DPR 5.7%DCE
PTA +2.74T +2.37UDC +1.49FLC 72R 8/16

Mountfield SSI Dcy Mogul-ET

840003006972816 Excellent-91 *TR *TV *TL *TY
PTA +1292M +85F +40P 99R 8/16
PTA +2.46T +2.57UDC +2.62FLC GTPI +2514G

Westenrade Carrera

931730982 99%RHA-I *TL *TD

Sandy-Valley Sterling-ET

69701759 *TV *TL *TY *TD
PTA +2178M +60F +66P 99R 8/16
PTA +2.14T +1.08UDC +1.63FLC GTPI +2542G

Le-O-La Superson Golden-ET

69737317 Very Good-88 VG-MS
1-11 2x 365d 25170 4.0 1013 2.9 731

3rd Dam

Le-O-La Atwood Gypsy EX-92 EX-MS
4-00 2x 365d 37410 4.2 1566 3.2 1207
2-07 2x 365d 29390 4.0 1177 3.0 875

4th Dam

Kerndt Grumpy Throne Tap-ET 2E-92 EX-MS DOM
8-00 2x 365d 34210 3.8 1301 3.4 1156
Life: 2284d 174690 3.7 6513 3.5 6128

5th Dam

Kerndt Mattie Grumpy-ET EX-92 4E DOM
7-00 2x 365d 30420 4.0 1211 3.2 981
Life: 2876d 207060 4.1 8949 3.3 6770

6th Dam

Kerndt Mink Elton Maxie EX-90 GMD DOM
4-08 2x 365d 34400 3.7 1282 3.2 1106

7th Dam

Kerndt Mabelle Nick Mink-ET EX-90 EX-MS
4-08 2x 365d 36140 3.8 1373 3.0 1084
Life: 1697d 132320 4.2 5529 3.1 4080

8th Dam

Boulder Stewart Mabelle EX-90 DOM
4-05 2x 314d 26440 4.8 1274 3.5 918



LARCREST CABOODLE VG-86 VG-MS DOM
2ND DAM OF LOT 22

22

ENDEAVOR GENOMIC HOLSTEINS LLC
C/O TODD WIDHOLM
CLIFTON, IL 60927
815-697-2700

Cogent Supershot

755898903 *TV *TL *TY *TD
PTA +2142M +74F +69P 78R 8/16
PTA +6.8PL 2.75SCS +2.3DPR 4.4%DCE
PTA +.99T +.76UDC +.66FLC 77R 8/16
GTPI +2634G

Larcrest Colonia-ET

73679984 99%RHA-I *TL *TD
9K GTPI +2538G +467M +85F +48P 78R 8/16
PTA +740NM +.25%F +.12%P
PTA +5.1PL 2.70SCS +.2DPR 4.7%DCE
PTA +2.10T +1.48UDC +1.19FLC 76R 8/16

ENDCO SUPER COLONIA 9978-ET

840003125945500 99%RHA-I
Born: September 19, 2015
13K GTPI +2617G +1136M +81F +62P 74R 8/16
PTA +796NM +.14%F +.10%P
PTA +5.3PL 2.75SCS +1.0DPR 4.9%DCE
PTA +1.84T +1.30UDC +1.63FLC 72R 8/16

Seagull-Bay Supersire-ET

69981349 Very Good-88 GM *TV *TL *TY *TD
PTA +2375M +114F +73P 99R 8/16
PTA +1.32T +.66UDC +.32FLC GTPI +2657G

Rose Superclass

536745399

De-Su 11236 Balisto-ET

70625988 99%RHA-I *TV *TL *TY *TD
PTA +949M +74F +57P 95R 8/16
PTA +1.66T +.85UDC +1.21FLC GTPI +2430G

Larcrest Caboodle

57187020 Very Good-86 VG-MS DOM
2-06 2x 365d 39300 4.7 1859 3.2 1277

3rd Dam

Larcrest Coal-ET VG-86

3-04 2x 365d 27020 4.0 1093 3.3 905
2-04 2x 308d 21350 4.2 907 3.3 697

4th Dam

Larcrest Oside Champagne-TW EX-90 GMD DOM

2-03 2x 365d 29110 4.5 1322 3.7 1077

5th Dam

Larcrest Juror Chanel EX-93 3E GMD DOM

9-00 2x 365d 48460 4.0 1943 3.4 1648

6th Dam

Larcrest Lindy Chandra VG-85

2-05 2x 365d 20896 4.8 993 3.8 803

7th Dam

Larcrest Inspiration Carly VG-87

3-05 2x 305d 21800 4.5 973 3.3 802



EO SIEMERS ASHLYNS ANGEL-ET EX-96 EEEEE 2E
MATERNAL SISTER TO DAM OF LOT 23



ERNEST-ANTHONY APHRODITE-ET EX-95 EEEEE 2E
DAM OF LOT 23

23

THE WRIGHT FARM
ENOSBURG FALLS, VT 05450
802-933-4775

Toc-Farm Goldsun-ET

53990032335
PTA -1108M -49F -23P 99R 8/16
PTA +.3PL 2.85SCS -1.8DPR 7.0%DCE
PTA +1.73T +2.28UDC +.36FLC 99R 8/16
GTPI +1513G

Ernest-Anthony Aphrodite-ET

134318321 Excellent-95 EEEEE 2E
6-08 2x 365d 40370 4.0 1617 3.0 1207
4-01 2x 340d 37960 5.8 2202 3.3 1269
5-02 2x 365d 36790 4.1 1512 3.2 1179
2-09 2x 338d 26760 4.0 1075 3.1 827
Life: 1591d 154120 4.5 6972 3.2 4938
• 2nd 4-Yr-Old Cow Eastern Fall/Nat 2007
• 3rd Aged Cow North East Fall National 2009

ERNEST-ANTHONY GSN 1224-ET

840003131975076
Born: June 1, 2015

Braedale Goldwyn

10705608C GP-CAN EXTRA'05 GM 12/11 *TV *TL
PTA -358M +13F +1P 99R 8/16
PTA +1.79T +1.51UDC +1.49FLC GTPI +1880G

Toc-Farm Allen Amyly

53000628285

Comestar Stormatic

6947936 EX-CAN GM 2/07 *TV *TL
PTA +28M -19F -9P 99R 8/16
PTA +.74T -.24UDC +1.70FLC GTPI +1459G

Tri-Day Ashlyn-ET

17181481 Excellent-96 EEEEE 2E GMD DOM
4-09 2x 365d 43090 4.8 2079 3.5 1503
3-08 2x 348d 38570 4.3 1675 3.4 1129
6-09 2x 294d 33330 4.7 1563 3.5 1183
Life: 1374d 144770 4.6 6665 3.5 5135

Full Sister to Ashlyn

Tri-Day Adeen-ET EX-93

• Four Times All-American Winner
• Nom All-Time All-American Sr-2-Yr Old

Maternal sisters to Aphrodite

EO Siemers Ashlyns Angel-ET EX-96 EEEEE 2E
2-04 2x 511d 42535 4.6 1991 3.3 1397

• Res All-American Sr 2-Yr-Old Cow 2006

EK-Oseeana Ambrosia EX-95 EEEEE EX-MS 2E
6-04 2x 365d 44135 4.2 1852 3.2 1399

• Reserve All-American 4-Year-Old 2007

• Member All-American Produce of Dam 2009

Kingsmill Ashlyns Annisa-ET EX-92 EX-MS

• 2nd Sr 3-Yr-Old North-E Fall Nat 2013

• 1st Sr 3-Yr-Old, Int & Res Grand VT State Show 2013

• 4th Sr 2-Yr-Old International 2012

• 1st Sr 2-Yr-Old & Int Champ Mid-E Fall Nat 2012

• 1st Wnt Yrlg Mid-E Summer Nat 2011

• 2nd Winter Yrlg East Fall Nat 2011

4th Dam

Bendy-Brook Star Fonda VG-86 VG-MS
3-11 2x 290d 23390 3.5 826 3.1 724
5-09 2x 312d 22340 3.3 734 3.0 680

Marcrest Encore

2048702 Excellent-96 EEEE GM 2/99

Bendy-Brook Odyssey Favorite

13590311 Excellent-92 EEEEE 2E DOM
6-01 2x 337d 22670 3.4 770 3.1 706
4-11 2x 317d 21410 3.4 721 3.1 658
4-00 2x 287d 20090 3.5 703 2.9 586

• Res All-American Produce of Dam 2001

• Nom Jr All-American Aged Cow 1995



TRI-DAY ASHLYN-ET EX-96 EEEEE 2E GMD DOM
3RD DAM OF LOT 24

24

THE WRIGHT FARM
 ENOSBURG FALLS, VT 05450
 802-933-4775

Mr Ansly Addiction-P-Red-ET

72128091 *TY
 PTA -1244M +5F -6P 79R 8/16
 PTA +4.1PL 2.62SCS +2.0DPR 5.4%DCE
 PTA +2.14T +2.66UDC +0.86FLC 78R 8/16
 GTPI +2080G

Howrigan-STJ Ladd Ace-P-ET

142272770 *RC *PO

LOTTA HILL VALENTINE-P-RED

840003126364878 *PO
 Born: February 14, 2015

Tiger-Lily Ladd P-Red-ET

69405976 Excellent-91 *PC *TV *TL *TY *TD
 PTA -1362M -8F -9P 99R 8/16
 PTA +2.21T +2.05UDC +1.09FLC GTPI +1953G

MS Apples Ainsley-ET

69822262 Excellent-90 *RC *CV
 2-04 2x 277d 19050 4.5 855 3.2 605

Tiger-Lily Ladd P-Red-ET

69405976 Excellent-91 *PC *TV *TL *TY *TD
 PTA -1362M -8F -9P 99R 8/16
 PTA +2.21T +2.05UDC +1.09FLC GTPI +1953G

St-Jacob Aftershock Ava-ET

70280344 Very Good-88 VG-MS
 4-06 2x 323d 23574 3.9 922 3.0 713
 3-06 2x 293d 19797 4.0 786 3.2 626
 2-01 2x 305d 19991 3.6 711 3.2 631

Maternal sisters to Ava

EO Siemers Ashlyns Angel-ET EX-96 EEEEE 2E
 2-04 2x 511d 42535 4.6 1991 3.3 1397

• Res All-American Sr 2-Yr-Old Cow 2006

EK-Oseeana Ambrosia EX-95 EEEEE EX-MS 2E
 6-04 2x 365d 44135 4.2 1852 3.2 1399

• Reserve All-American 4-Year-Old 2007

• Member All-American Produce of Dam 2009

Ernest-Anthony Aphrodite-ET EX-95 EEEEE 2E
 6-08 2x 365d 40370 4.0 1617 3.0 1207

• 2nd 4-Yr-Old Cow Eastern Fall/Nat 2007

• 3rd Aged Cow North East Fall National 2009

3rd Dam

Tri-Day Ashlyn-ET EX-96 EEEEE 2E GMD DOM
 4-09 2x 365d 43090 4.8 2079 3.5 1503
 Life: 1374d 144770 4.6 6665 3.5 5135

4th Dam

Bendy-Brook Odyssey Favorite EX-92 2E DOM
 6-01 2x 337d 22670 3.4 770 3.1 706
 4-11 2x 317d 21410 3.4 721 3.1 658

• Res All-American Produce of Dam 2001

• Nom Jr All-American Aged Cow 1995

5th Dam

Bendy-Brook Star Fonda VG-86 VG-MS
 3-11 2x 290d 23390 3.5 826 3.1 724
 5-09 2x 312d 22340 3.3 734 3.0 680



WILSTAR-RS TLT LIMITED-RED EX-94 2E
DAM OF LOT 25

25

BREE & MALLORY RUSSELL
KNOB LICK, KY 42154
270-537-3352

Scientific B Defiant-ET

141123484 Very Good-87 *RC *TV *TL *TY *TD
PTA +377M -25F +1P 97R 8/16
PTA -1.8PL 3.17SCS -1.8DPR 6.7%DCE
PTA +3.80T +2.67UDC +2.68FLC 96R 8/16
GTPI +1759G

Wilstar-RS Tlt Limited-Red

62371079 Excellent-94 EX-MS 2E
3-07 2x 365d 37420 4.1 1519 3.3 1221
5-09 2x 365d 35360 3.8 1327 3.2 1118
1-11 2x 365d 24200 3.8 928 3.2 778
Life: 1391d 116170 3.9 4562 3.3 3776
• Res All-American R&W Aged Cow 2011
• Res Grand Champ WDE R&W Show 2011
• 1st Mature Cow/HM Gr Ch Can Nat'l R&W 2011
• Res All-Canadian R&W Sr Cow 2011
• Nom All-American R&W 4-Yr-Old 2009
• 1st 4-Yr-Old/Res Sr Champ WI Champ Show 2009

MILKSOURCE DRNT LACY-RED-ET

73200958
Born: September 9, 2014

Bred: Air-Osa-Mle Malone-Red-ET

Regancrest S Braxton-ET

61898423 Excellent-95 *TR *TV *RL *TY *TD
PTA +1012M -12F +2P 99R 8/16
PTA +2.59T +1.10UDC +1.47FLC GTPI +1451G

Scientific Gold Dior Rae-ET

138328405 Excellent-92 EEEEE DOM *RC *CV
4-02 2x 365d 31910 4.7 1495 3.3 1039
2-02 2x 365d 31900 4.7 1484 3.5 1112

Ladino Park Talent-Imp-ET

930377 *RC *TV *TL
PTA -557M -44F -9P 99R 8/16
PTA +.80T +9.90UDC +9.20FLC GTPI +2059G

Wilstar-Rs Kite Lover-Red

134370389 Excellent-91 EX-MS 2E
4-07 2x 365d 41700 3.9 1627 3.1 1297
3-03 2x 365d 32070 3.6 1170 3.1 999
2-03 2x 327d 26160 3.7 977 3.1 820
Life: 1258d 116740 3.9 4511 3.2 3703

Maternal sisters to Lot Lacy

Milksource Adv Lilac-Red-ET EX-94

3-00 2x 292d 26240 3.9 1034 3.3 872
• Res Grand Champ WDE Jr Show 2014

Milksource Cntr Lovely-Red EX-92

3-01 2x 365d 30360 4.0 1216 3.2 962
• Jr All-American R&W Jr 3-Yr-Old 2014

Milksource Barb Love-Red-ET VG-87

• 2nd Summer Yrlg WDE R&W Show 2015

Milksource Dft Lexus-Red-ET

• 2nd Spring Calf WDE R&W Show 2015

3rd Dam

Wilstar-Rs Rub Lazer-Red-TW EX-91 EX-MS 2E

4-02 2x 365d 40920 3.7 1532 3.1 1279
Life: 1550d 135190 3.7 4954 3.1 4249

4th Dam

WVA-Greystone M Lexus-ET EX-91 2E *RC

4-04 2x 365d 28490 3.1 890 3.0 842

5th Dam

Hanover-Hill Charlylu-Red VG-85

4-11 3x 365d 35320 4.1 1463 3.6 1280

6th Dam

Hanover-Hill-R Lulu-Red-ET EX-91 2E

3-05 3x 365d 26620 3.9 1033 3.5 920

7th-10th Dams

C Hanoverhill Sheik Lulu-ET EX-CAN *RC

9-03 2x 365d 39020 3.8 1484 3.3 1302
Life: 2849d 206396 3.9 8136 3.5 7196

Tora Triple Threat Lulu EX-96 GMD DOM 11*

3-04 2x 321d 22070 3.7 811

• Res All-Canadian Mature Cow 1981

Ormsby Lougo Alta EX-90 GMD

Ormsby Alta Pride VG-85



AMMON-PEACHEY SHAUNA-ET EX-91 DOM
3RD DAM OF LOT 26

26 A

INTENSE-COM HS 1059 334F-ET

840003130001774 99%RHA-I *TR *TL *TD
Born: March 28, 2016
12K GTPI +2573G +958M +68F +51P 74R 8/16
PTA +758NM +.12%F +.08%P
PTA +6.7PL 2.75SCS +2.5DPR 6.5%DCE
PTA +1.09T +1.40UDC +1.06FLC 72R 8/16

CHOICE OF LOTS 26A OR 26B

PATRICK COMYN & GREG CROUSE
MADISON, VA 22727
540-948-5238

B INTENSE-COM HS 1059 342F-ET

840003130001782 99%RHA-I *TR *TL *TD
Born: March 30, 2016
12K GTPI +2565G +1394M +61F +54P 73R 8/16
PTA +775NM +.03%F +.04%P
PTA +6.8PL 2.61SCS +1.5DPR 6.5%DCE
PTA +.93T +1.23UDC +1.52FLC 72R 8/16

S-S-I P-K Shtglss Hotshot

72190820 *TV *TL *TY *TD
PTA +1390M +66F +44P 79R 8/16
PTA +7.9PL 2.67SCS +3.1DPR 6.7%DCE
PTA +1.00T +.98UDC +1.29FLC 78R 8/16
GTPI +2554G

MS Favreautiere Mirror-ET

840003123886021 99%RHA-I *TL *TD
13K GTPI +2479G +1379M +60F +49P 77R 8/16
PTA +5.3PL 2.66SCS +.4DPR 4.8%DCE +696NM
PTA +1.20T +1.48UDC +1.33FLC 74R 8/16

Butz-Butler Shotglass-ET

70476870 Excellent-91 EEEE *TV *TL *TY *TD
PTA +1655M +56F +41P 98R 8/16
PTA +1.09T +1.25UDC +1.38FLC GTPI +2306G

S-S-I Twist Mojo 7326-ET

840003008328724 Good Plus-80 DOM
3-00 3x 305d 25890 4.1 1060 3.4 883

De-Su Nominee-ET

70626023 99%RHA-I *TR *TV *TL *TY *TD
PTA +728M +37F +31P 92R 8/16
PTA +1.19T +1.25UDC +1.28FLC GTPI +2394G

Seagull-Bay SH Miranda-ET

71618863C Very Good-87-CAN
1-11 2x 365d 31021 3.9 1217 3.2 1001

3rd Dam

Ammon-Peachey Shauna-ET EX-91 EX-MS GMD DOM
2-01 3x 365d 35120 4.1 1427 3.1 1079

"One of the most prolific brood cows for high genomics"

Dam of:

Supersire, Headliner, Shaw, Sargeant, Platinum, Diamond, & more

4th-10th Dams

Pine-Tree Martha Sheen-ET VG-86 VG-MS DOM 1*
1-11 3x 365d 31210 4.2 1305 3.1 968

Many Sons in AI

Pine-Tree Missy Martha-ET VG-86 DOM
3-05 3x 361d 32220 3.9 1242 3.4 1111

Wesswood-HC Rudy Missy-ET EX-92 3E GMD DOM
4-11 3x 365d 40880 4.1 1665 3.4 1385
Life: 1262d 119610 4.1 4885 3.4 4031

20+ Sons in AI

Wesswood Elton Mimi EX-90 EEEEE GMD DOM
3-05 2x 365d 35380 3.3 1160 3.2 1121

Wesswood Mandingo Ivy VG-87 VEEVV
6-05 2x 365d 36330 3.6 1305 3.0 1087
Life: 1835d 144060 3.4 4933 3.1 4412

Wesswood Astro Matt Esther VG-87 GMD DOM
6-08 2x 365d 31860 3.5 1125 3.1 982
Life: 1847d 140110 3.6 5029 3.2 4424

Wesswood Bell Claudette VG-87 GMD DOM
9-10 2x 365d 38810 3.6 1383 2.9 1140
Life: 3634d 280980 3.6 9997 3.1 8625



PYRAMID ASTRO ELEGANT EX-92 2E
3RD DAM OF LOT 27

27

MATTHEW & JENNIFER HULL
ENOSBURG FALLS, VT 05450
802-933-4865

Maple-Downs-I G W Atwood-ET

8956379C Excellent-90 *TR *TV *TL *TY *TD
PTA -26M +30F +3P 99R 8/16
PTA -.1PL 3.04SCS -3.0DPR 9.9%DCE
PTA +3.65T +2.58UDC +2.83FLC99R 8/16
GTPI +1927G

Pyramid Lucifer Eeyore

140956405 Excellent-91 EX-MS
4-03 2x 305d 23470 4.3 1010 3.3 766
2-00 2x 365d 22590 4.5 1021 3.5 785
3-02 2x 305d 21390 4.3 916 3.2 688

DALESTEAD ATWOOD EMILY

840003132197588
Born: December 8, 2015

Braedale Goldwyn

10705608C GP-CAN EXTRA'05 GM 12/11 *TV *TL
PTA -358M +13F +1P 99R 8/16
PTA +1.79T +1.51UDC +1.49FLC GTPI +1880G

MD-Delight Durham Atlee-ET

131704103 Excellent-92 EEEEE DOM
3-11 2x 365d 38290 5.5 2091 3.3 1249
• All-American Sr 3-Yr-Old Cow 2005

Lylehaven Lucifer

129513337 Excellent-93 *B/R *CV
PTA -1110M -29F -29P 98R 8/16
PTA +1.41T +1.03UDC +2.10FLC TPI +1120

Pyramid Advent Ella

138376444 Good Plus-82 *RC
2-02 2x 277d 20170 3.7 737 2.8 559
3.02 2x 305d 19010 3.5 672 2.8 538

3rd Dam

Pyramid Astro Elegant EX-92 EEEEE 2E
3-01 2x 365d 29070 5.4 1566 3.3 958
5-08 2x 253d 21930 4.1 905 3.0 661

HM All-American Winter Yrlg 2005

4th Dam

Buroco Juror Edith EX-94 EEEEE 4E
6-05 2x 365d 37340 4.1 1541 3.2 1201
Life: 2829d 236740 4.4 10377 3.1 7380

- Nom. Jr All-American 4-Yr-Old 2006
- Nom. Jr All-American Sr. 3-Yr-Old 2005
- HHM Jr All-American Jr. Yearling, 2003
- 2nd Aged Cow Northeast Fall National 2008
- Sr. & Grand Champ Northeast Fall Jr Show 2008
- Res. Sr/Res. Grand Champ VT Holstein Show 2005
- Res Jr Champion Northeast Fall National 2002

5th Dam

Larisac Stardust Eddie EX-90-2E-CAN 3*
6-04 2x 365d 28880 4.3 1248 3.0 862
Life: 9 Lacs 201842 4.2 8448 3.2 6380

- 1st Senior 2-Year-Old, Rimouski 2000
- 3rd Senior 2-Year-Old, QC Expo 2000



BUROCO JUROR EDITH EX-94 EEEEE 4E
4TH DAM OF LOT 27 & 2ND DAM OF LOT 28



PYRAMID DURHAM ETERNITY-ET VG-88 VG-MS
DAM OF LOT 28

28

ROBERT JOHNSON
DICKERSON, MD 20842
240-372-0740

Maple-Downs-I G W Atwood-ET

8956379C Excellent-90 *TR *TV *TL *TY *TD
PTA -26M +30F +3P 99R 8/16
PTA -.1PL 3.04SCS -3.0DPR 9.9%DCE
PTA +3.65T +2.58UDC +2.83FLC99R 8/16
GTPI +1927G

Pyramid Durham Eternity-ET

139849695 Very Good-88 VG-MS
2-11 2x 365d 28740 4.2 1204 3.4 965
5-09 2x 305d 22760 4.2 956 3.3 742
4-00 2x 305d 21930 3.7 822 3.3 715
1-11 2x 321d 20990 4.8 1018 3.5 728
Life: 1448d 100730 4.3 4294 3.3 3343
• *HHM Jr All-American Milking Yearling 2010*

ARTIE-JAY ATWOOD ELBA-ET

840003125541470
Born: December 11, 2014

Braedale Goldwyn

10705608C GP-CAN EXTRA'05 GM 12/11 *TV *TL
PTA -358M +13F +1P 99R 8/16
PTA +1.79T +1.51UDC +1.49FLC GTPI +1880G

MD-Delight Durham Atlee-ET

131704103 Excellent-92 EEEEE DOM
3-11 2x 365d 38290 5.5 2091 3.3 1249
• *All-American Sr 3-Yr-Old Cow 2005*

Regancrest Elton Durham-ET

2250783 Excellent-90 GM 8/01 *TR *CV *TL
PTA -697M -50F -9P 99R 8/16
PTA +1.52T +1.31UDC +1.33FLC GTPI +1523G

Buroco Juror Edith

8426013C Excellent-94 EEEEE 3E
6-05 2x 365d 37340 4.1 1541 3.2 1201
10-0 2x 365d 37000 4.3 1593 3.0 1098
8-02 2x 365d 36570 4.7 1708 3.3 1205
4-05 2x 305d 29050 4.1 1184 3.1 914
3-03 2x 359d 28410 4.1 1172 3.2 922
12-3 2x 322d 27726 4.4 1223 3.0 832 RIP
2-02 2x 345d 21460 4.3 921 3.4 721
Life: 3323d 273810 4.5 12211 3.1 8511

Maternal sisters to Eternity

Pyramid Astro Elegant EX-92 2E

3-01 2x 365d 29070 5.4 1566 3.3 958
• *Res Jr All-American Sr 2-Year-Old 2006*
• *Res Jr All-American Winter Yearling 2005*
• *Nom All-American Winter Yearling 2005*

EDITH!

- *Nom. Jr All-American 4-Yr-Old 2006*
- *Nom. Jr All-American Sr. 3-Yr-Old 2005*
- *HHM Jr All-American Jr. Yearling, 2003*
- *2nd Aged Cow Northeast Fall National 2008*
- *Sr. & Grand Champ Northeast Fall Jr Show 2008*
- *Res. Sr/Res. Grand Champ VT Holstein Show 2005*
- *Res Jr Champion Northeast Fall National 2002*

Ked Juror-ET

2124357 Good Plus-82 GM 2/01 *TV *TL *TD

Larisac Stardust Eddie

10636540C Excellent-90-2E-CAN 3*
6-04 2x 365d 28880 4.3 1248 3.0 862
Life: 9 Lacs 201842 4.2 8448 3.2 6380
• *1st Senior 2-Year-Old, Rimouski 2000*
• *3rd Senior 2-Year-Old, QC Expo 2000*



VT-POND-VIEW GOLDWYN SKY-ET VG-88 EX-MS
2ND DAM OF LOT 29

29

CARPSDALE FARMS LTD
ENOSBURG FALLS, VT 05450
802-933-2096

Maple-Downs-I G W Atwood-ET

8956379C Excellent-90 *TR *TV *TL *TY *TD
PTA -26M +30F +3P 99R 8/16
PTA -.1PL 3.04SCS -3.0DPR 9.9%DCE
PTA +3.65T +2.58UDC +2.83FLC99R 8/16
GTPI +1927G

CEE-Whit Shottle Skyla-ET

65489873 Very Good-87 VG-MS
5-03 2x 365d 26640 3.6 946 3.3 868
3-03 2x 303d 22970 3.4 786 3.1 721
4-03 2x 326d 21140 3.5 735 3.3 691
2-02 2x 331d 20200 3.7 745 3.2 644

CARPSDALE-J ATWOD SEKIA-TW

78020882
Born: October 25, 2015

Braedale Goldwyn

10705608C GP-CAN EXTRA'05 GM 12/11 *TV *TL
PTA -358M +13F +1P 99R 8/16
PTA +1.79T +1.51UDC +1.49FLC GTPI +1880G

MD-Delight Durham Atlee-ET

131704103 Excellent-92 EEEEE DOM
3-11 2x 365d 38290 5.5 2091 3.3 1249

• All-American Sr 3-Yr-Old Cow 2005

Picston Shottle-ET

GBR 598172 EX-95-GBR GM 12/11 *TV *TL
PTA +478M +26F +10P 99R 8/16
PTA +1.24T +.91UDC +.76FLC GTPI +1925G

VT-Pond-View Goldwyn Sky-ET

138525697 Very Good-88 EX-MS
2-00 2x 365d 22620 4.1 938 3.3 745

3rd Dam

Rummage SKB Strawberry-ET EX-94 EEEEE

5-05 2x 365d 29950 4.3 1284 3.2 951
4-00 2x 365d 27920 4.3 1195 3.3 920

4th Dam

Ronbeth Linjet Shannon EX-94 EEEEE 2E

3-02 2x 365d 25392 4.4 1112 3.2 815
5-06 2x 305d 24160 5.1 1224 2.7 660

5th Dam

Ronbeth A Star Sandra VG-85 VG-MS-CAN 1*

3-01 2x 365d 26354 3.8 1014 3.3 869
Life: 7 Lact 156681 4.0 6272 3.3 5161

6th Dam

Ronbeth Missile Sadie VG-85 VVVV 1*

7-09 2x 343d 24381 4.6 1113 3.3 796
Life: 8 Lact 160466 4.7 7471 3.5 5582

7th Dam

Ronbeth Stylist Yolanda VG-87 EX-MS 1*

7-05 2x 354d 24008 4.3 1025 3.3 785
Life: 9 Lact 185363 4.3 8060 3.4 5110

8th Dam

Ronbeth Yuletide Bertha VG-86 VVVV 3*

10-10 2x 365d 31720 3.6 1129
Life: 11 Lact 339738 3.8 13060

9th Dam

Ronbeth Telstar Bertha EX-CAN 9*

10-2 2x 365d 27432 3.6 1001
Life: 9 Lact 195224 3.7 7253

• Grand Champion East Central Champ. 1971



SPRINGWAY WS MELODY-ET EX-91 2E
3RD DAM OF LOT 30



SPRINGWAY RUDOLPH RHYME-ET EX-91 2E DOM
4TH DAM OF LOT 30

30

JOHN CARPENTER
ENOSBURG FALLS, VT 05450
802-933-2272

Maple-Downs-I G W Atwood-ET

8956379C Excellent-90 *TR *TV *TL *TY *TD
PTA -26M +30F +3P 99R 8/16
PTA -.1PL 3.04SCS -3.0DPR 9.9%DCE
PTA +3.65T +2.58UDC +2.83FLC99R 8/16
GTPI +1927G

Carpdsdale-J Shottle Mule

70668256 Very Good-85
3-04 2x 364d 25630 3.5 904 3.3 844
2-01 2x 365d 23700 3.7 887 3.2 770

CARPSDALE-J ATWOOD DONKEY

72879198 Very Good-85
Born: June 1, 2013
2-03 2x 342d 17840 4.2 744 3.1 552

- Sells Dry

Braedale Goldwyn

10705608C GP-CAN EXTRA'05 GM 12/11 *TV *TL
PTA -358M +13F +1P 99R 8/16
PTA +1.79T +1.51UDC +1.49FLC GTPI +1880G

MD-Delight Durham Ailee-ET

131704103 Excellent-92 EEEEE DOM
3-11 2x 365d 38290 5.5 2091 3.3 1249

- All-American Sr 3-Yr-Old Cow 2005

Picston Shottle-ET

GBR 598172 EX-95-GBR GM 12/11 *TV *TL
PTA +478M +26F +10P 99R 8/16
PTA +1.24T +.91UDC +.76FLC GTPI +1925G

Carpdsdale-J Talen Mitten

139749351 Very Good-86 VG-MS
2-01 2x 345d 20670 4.0 835 3.1 647

3rd Dam

Springway WS Melody-ET EX-91 2E

3-05 2x 365d 41590 4.0 1682 3.0 1256
Life: 1451d 114050 3.6 4085 3.0 3458

4th Dam

Springway Rudolph Rhyme-ET EX-91 2E DOM

3-05 2x 365d 30700 5.5 1694 3.0 920
Life: 1824d 111230 4.6 5160 3.3 3674

5th-12th Dams

Springway Bstar Roselle-ET EX-90 EEVVE

3-10 2x 365d 30190 4.6 1382 3.0 914
Life: 1763d 124260 4.4 5432 3.1 3824

Springway Valiant Rosemary-ET EX-90 2E DOM

5-05 2x 365d 31720 4.3 1357 2.9 916
Life: 3943d 262730 4.5 11737 3.0 7973

Dandy-Lea Lucinda EX-91 VEEE 3E GMD DOM

10-9 2x 365d 25900 3.7 957 2.9 742
Life: 2792d 166640 3.5 5882

Avesta Astra Lady Laura EX-90 VEEV 2E GMD

7-03 2x 332d 22150 4.0 887
Life: 2868d 145010 4.0 5792

Pretty Prairie Isaac Louise EX-91 EEEE GMD

5-09 2x 365d 27220 4.1 1129
Life: 2246d 136570 3.8 5165

Pretty Prairie Ideal Fran EX-90 VEEE GMD

10-0 2x 365d 27170 3.4 926
Life: 1919d 122840 3.3 4043

Pretty Prairie Rosafe Connie VG-85 VG-MS

3-06 2x 365d 15740 3.4 534

Pretty Prairie Colantha Burke VG-85

4-05 2x 311d 18118 3.6 648



CLEAR-ECHO LEXOR 2788-ET VG-86 VG-MS
DAM OF LOT 31

31

CLEAR-ECHO FARM LLC
C/O KEVIN PECK
SCHUYLerville, NY 12871
518-669-4468

EDG Rubicon-ET

72128125 *TV *TL *TY *TD
PTA +1557M +99F +56P 99R 8/16
PTA +6.3PL 3.00SCS +1.2DPR 4.2%DCE
PTA +1.99T +1.48UDC +2.01FLC 79R 8/16
GTPI +2691G

Clear-Echo Lexor 2788-ET

70737158 99%RHA-I Very Good-86 VG-MS
9K GTPI +2280G +1.36T +.87UDC +.73FLC 8/16
2-02 3x 365d 32040 4.4 1407 3.1 979

CLEAR-ECHO RUBICON 3738-ET

840003129746143 99%RHA-I
Born: January 1, 2016
30K GTPI +2551G +1328M +75F +50P 75R 8/16
PTA +719NM +.09%F +.03%P
PTA +4.9PL 2.83SCS +1.6DPR 4.7%DCE
PTA +1.99T +1.62UDC +1.15FLC 74R 8/16

Mountfield SSI Dcy Mogul-ET

840003006972816 Excellent-91 *TR *TV *TL *TY
PTA +1292M +85F +40P 99R 8/16
PTA +2.46T +2.57UDC +2.62FLC GTPI +2514G

Sandy-Valley Robust Ruby-ET

69998487 Very Good-87 VG-MS
2-04 2x 305d 29450 3.2 950 3.1 916

Generations Lexor-ET

11098658C Very Good-85
PTA +636M +66F +45P 98R 8/16
PTA +.75T +.09UDC +.28FLC GTPI +2173G

Clear-Echo Observer 2280-ET

68669880 Good Plus-84 *TR *TV *TY *TD
2-01 3x 365d 27890 3.6 1015 3.1 865
3-07 3x 311d 21980 3.6 793 3.1 679

3rd Dam

Clear-Echo 822 Ramo 1200-ETEX-94 3E DOM
4-04 3x 365d 39570 4.5 1782 3.0 1177
Life: 1976d 163600 4.1 6752 3.3 5340

4th Dam

Clear-Echo Hershl D-Rac 822 VG-87 DOM
4-05 3x 365d 40830 3.1 1273 2.8 1158
Life: 1641d 152450 3.1 4692 3.0 4630

5th Dam

Clear-Echo Decisn L-Rac 505 VG-86 GMD DOM
5-01 2x 365d 39390 3.9 1528 3.1 1232
Life: 1655d 144890 4.2 1601 3.4 4882

6th Dam

Clear-Echo Lily Rac 264-ET GP-84 DOM *CV
2-11 2x 365d 32980 4.3 1410 3.4 1137
Life: 1424d 110650 4.5 5013 3.5 3860

7th Dam

Clear-Echo Jab Racer 45-ET GP-82 GMD DOM
3-02 3x 365d 34120 4.0 1355 3.3 1127

8th-11th Dams

Clear-Echo Mascot Racer-ET GP-82
3-06 3x 320d 31190 4.0 1242 3.0 932
Life: 1553d 115380 4.3 4920 3.2 3694

Clear-Echo Troy Frivolous VG-86 GMD DOM
4-04 2x 365d 29860 4.3 1283 3.2 952
Life: 1490d 112040 4.1 4636 3.0 3408

Clear-Echo Apostle Inez EX-90
9-02 2x 307d 27450 4.0 1099 2.8 772

Kings-Ransom Glarus Ingrid VG-87
7-03 2x 305d 19780 3.8 744



CLEAR-ECHO 822 RAMO 1200-ET EX-94 3E DOM
3RD DAM OF LOTS 31 & 32

32

SILENT SYNDICATE
MADISON, VA 22727
540-948-5238

Seagull-Bay Supersire-ET

69981349 Very Good-88 GM *TV *TL *TY *TD
PTA +2375M +114F +73P 99R 8/16
PTA +5.7PL 2.84SCS -1.0DPR 4.0%DCE
PTA +1.32T +.66UDC +.32FLC 99R 8/16
GTPI +2657G

KFH Supersonic Silence-ET

71503208 Good Plus-82 99%RHA-I
9K GTPI +2200G +323M +33F +17P 78R 8/16
PTA +3.1PL 2.73SCS +2.7DPR 6.4%DCE
PTA +1.58T +1.59UDC +.44FLC 81R 8/16

SISYN SS 255 357F-ET

840003130001797 99%RHA-I *TR *TL *TD
Born: April 19, 2016
12K GTPI +2538G +1556M +81F +53P 77R 8/16
PTA +697NM +.08%F +.02%P
PTA +4.4PL 2.77SCS +.9DPR 5.3%DCE
PTA +2.01T +1.32UDC +.88FLC 77R 8/16

Roylane Socra Robust-ET

64966739 Very Good-88 VG-MS GM 8/15 *TR *TV *TL
PTA +976M +74F +44P 99R 8/16
PTA +.73T +.69UDC +1.05FLC GTPI +2476G

Ammon-Peachey Shauna-ET

66228178 Excellent-91 EX-MS GMD DOM
2-01 3x 365d 35120 4.1 1427 3.1 1079

Misty Springs Supersonic-ET

11113974C GM 8/15 *TR *TY
PTA +1140M +67F +39P 99R 8/16
PTA +1.28T +.85UDC -.52FLC GTPI +2345G

Clear-Echo Armstead 1779-ET

65417970 99%RHA-I Very Good-88 EX-MS
6-00 3x 365d 37000 4.3 1593 3.0 1098
1-11 3x 365d 30740 3.7 1135 3.0 929
Life: 3323d 273810 4.5 12211 3.1 8511

3rd Dam

Clear-Echo 822 Ramo 1200-ET EX-94 3E DOM
4-04 3x 365d 39570 4.5 1782 3.0 1177
Life: 1976d 163600 4.1 6752 3.3 5340

4th Dam

Clear-Echo Hershl D-Rac 822 VG-87 DOM
4-05 3x 365d 40830 3.1 1273 2.8 1158
Life: 1641d 152450 3.1 4692 3.0 4630

5th Dam

Clear-Echo Decisn L-Rac 505 VG-86 GMD DOM
5-01 2x 365d 39390 3.9 1528 3.1 1232
Life: 1655d 144890 4.2 1601 3.4 4882

6th Dam

Clear-Echo Lily Rac 264-ET GP-84 DOM *CV
2-11 2x 365d 32980 4.3 1410 3.4 1137
Life: 1424d 110650 4.5 5013 3.5 3860

7th Dam

Clear-Echo Jab Racer 45-ET GP-82 GMD DOM
3-02 3x 365d 34120 4.0 1355 3.3 1127

8th-11th Dams

Clear-Echo Mascot Racer-ET GP-82
3-06 3x 320d 31190 4.0 1242 3.0 932
Life: 1553d 115380 4.3 4920 3.2 3694

Clear-Echo Troy Frivolous VG-86 GMD DOM
4-04 2x 365d 29860 4.3 1283 3.2 952
Life: 1490d 112040 4.1 4636 3.0 3408

Clear-Echo Apostle Inez EX-90
9-02 2x 307d 27450 4.0 1099 2.8 772

Kings-Ransom Glarus Ingrid VG-87
7-03 2x 305d 19780 3.8 744



GOLDEN-OAKS PERK RAE-RED-ET EX-90 EX-MS
3RD DAM OF LOT 33

33

ARRON RAY TOMPKINS & MYLES BRANCH
ENNICE, NC 28623
336-363-4639

S-S-I Partyrock Profit-ET

840003014334961 99%RHA-I *TV *TL *TY *TD
PTA +1097M +64F +48P 78R 8/16
PTA +7.2PL 2.69SCS +2.2DPR 4.6%DCE
PTA +1.59T +1.72UDC +1.82FLC 75R 8/16
GTPI +2623G

Golden-Oaks Jasksta-Rose

840003013874021 99%RHA-I GP-83 @ 2-06 *RC *PO
10K GTPI +1936G

GLAD-RAY-K PROFIT POSE

840003129888950 99%RHA-I *PO
Born: March 2, 2016

S-S-I Maurice Partyrock-ET

840003009554583 Very Good-87 *TV *TL *TY *TD
PTA +363M +50F +25P 91R 8/16
PTA +1.19T +1.38UDC +1.58FLC GTPI +2343G

S-S-I Mogul Maho 8054-ET

840003009554577 99%RHA-I Very Good-88 EX-MS DOM
2-01 3x 305d 30440 3.5 1075 3.3 995

De-Su Altajackman-ET

70625846 99%RHA-I *TV *TL *TY *TD
PTA +838M +21F +37P 98R 8/16
PTA +1.27T +1.58UDC +1.60FLC GTPI +2266G

Golden-Oaks C Posie-Red-ET

70560464 Very Good-85 VG-MS
2-04 3x 360d 32280 3.1 996 3.2 1024

3rd Dam

Golden-Oaks Perk Rae-Red-ET EX-90 *PO

1-11 3x 365d 31030 3.7 1161 3.4 1041
4-07 3x 365d 29310 3.4 998 3.2 938

4th Dam

Scientific Beauty Rae-ET EX-90 *RC DOM

4-03 2x 365d 33710 4.7 1595 3.7 1243

5th Dam

Scientific Jubilant Rae-ET EX-90 EEEVV DOM

5-11 3x 365d 38880 4.1 1607 3.6 1402
Life: 4 Lact 117589 4.0 4707 3.6 4242

6th Dam

C Hanoverhill Tony Rae EX-96 3E GMD DOM

6-11 3x 365d 40220 4.1 1661 3.3 1331
Life: 2247d 166396 4.1 6904 3.4 5612

7th Dam

C Hanoverhill TT Roxette-ET EX-94 2E GMD

10-0 3x 365d 35040 4.3 1518 3.0 1063
Life: 2104d 164789 4.1 6760 3.1 3587

8th Dam

Mil-R-Mor Roxette EX-90 EEEV GMD DOM 30*

7-01 2x 365d 24530 4.7 1153
Life: 2150d 121417 4.7 5725

9th, 10th & 11th Dams

C Glenridge Citation Roxy EX-97 4E GMD

10-1 2x 365d 25280 4.2 1061
Life: 3620d 209784 4.5 9471

"Queen of the Breed"

C Norton Court Model Vee EX-90 *6 STAR

7-09 2x 357d 20362 3.9 793
Life: 4183d 218629 3.9 8581

• All-American Produce of Dam 1977 - 1979

Norton Court Reflection Val VG-85 *5 STAR

8-11 2x 332d 20631 3.7 765
Life: 14 Lact 249583 3.7 9295

34

BRENT & LAWANDA HOSTETTER
ANNVILLE, PA 17003
717-865-0982

Mr D Apple Diamondback

840003013721049 99%RHA-I *RC *RV *TL *TY *TD
PTA -332M +13F +11P 79R 8/16
PTA +.9PL 3.00SCS -1.5DPR 7.3%DCE
PTA +3.41T +2.50UDC +2.69FLC 78R 8/16
GTPI +2026G

Happy-Milkin G Cotton Candy

71021093 Good Plus-83- VG-MS
2-03 2x 305d 25460 3.5 887 3.0 758
• 2nd Jr 3-Yr-Old PA Fall Champ Show 2016
"Will be Excellent soon"

HEIFER CALF

840003129749842 (Pending)
Born: June 17, 2016

Val-Bisson Doorman-ET

107281711C 99%RHA-I VG-87-CAN ST'16*TV *TL *TY
PTA -25M +42F +25P 99R 8/16
PTA +3.54T +2.46UDC +2.23FLC GTPI +2354G

Ms Delicious Apple-Red-ET

139236776 Excellent-94 EEEEE 2E *TV *TD
7-02 2x 365d 46510 4.0 1844 3.1 1424
Life: 1427d 149130 3.9 5804 3.1 4675

Toc-Farm Goldsun-ET

53990032335
PTA -1108M -49F -23P 99R 8/16
PTA +1.73T +2.28UDC +.36FLC GTPI +1513G

MS Con-Hill Dundee Chandra

65625706 Excellent-90 EX-MS
5-00 2x 305d 28820 2.6 748 2.9 836
2-11 2x 302d 26330 2.8 743 3.0 800
6-01 2x 305d 24860 2.5 619 2.8 687

Regancrest Dundee-ET

127640114 Excellent-95 *TV *TL

Miss Con-Hill Eclipse Clip

63201765 Very Good-86 VG-MS
7-04 3x 305d 26150 3.3 853 2.9 770
5-02 2x 305d 28670 3.9 1116 2.8 801
6-03 2x 305d 26150 3.3 853 2.9 770
8-05 2x 305d 18950 3.5 667 3.0 565
Life: 1765d 141670 3.5 4888 2.8 4033

35

SUNNY-HILLVUE FARM
VALE, NC 28168
704-462-2703

Regancrest Reginald-ET

62496439 *TY *TD
PTA +61M +26F +11P 98R 8/16
PTA -2.3PL 3.06SCS -.3DPR 6.6%DCE
PTA +2.49T +2.23UDC +.97FLC 97R 8/16
GTPI +1957G

Sunny-Hillvue Atl Karina

72585124 Excellent-90

SUNNY-HILLVUE REG KARINA

840003126318031
Born: September 10, 2015

Braedale Goldwyn

10705608C GP-CAN EXTRA'05 GM 12/11 *TV *TL
PTA -358M +13F +1P 99R 8/16
PTA +1.79T +1.51UDC +1.49FLC GTPI +1880G

Regan-Joy Durham Regenia-ET

207184723 Excellent-92 EEEEE GMD D0m
3-05 2x 365d 37880 3.6 1374 3.3 1245
2-04 2x 365d 28260 4.1 1163 3.2 909

Maple-Downs-I G W Atlantic-ET

8956383C Very Good-88 *TR *TV *TL *TY *TD
PTA +323M -17F -1P 99R 8/16
PTA +1.93T +1.76UDC +1.33FLC GTPI +1789G

Ron-Rou Roy Kara

137682544 Good Plus-83 @ 3-05
2-10 2x 280d 16920 4.2 716 2.9 488
1-10 2x 271d 13970 3.4 478 3.1 432

3rd Dam

Ron-Rou Durham Kara-ET VG-87 VG-MS
3-00 2x 365d 28830 3.7 1062 3.2 932

Maternal sister to Kara

Ron-Rou Leduc Kayla-TW VG-89 EEVVE @ 2-05
2-02 2x 305d 26880 4.7 1268 3.2 860

• HM All-American Jr 2-Yr-Old Cow 2004

4th Dam

Silverridge Aeroline Libby VG-88
1-11 2x 365d 22936 3.8 878 3.4 780

5th Dam

Silverridge G B Linda VG-86-4YR-CAN
5-05 2x 365d 34750 4.1 1429 3.0 1043
Life: 6 Lact 187054 4.2 7793 3.3 6257

6th Dam

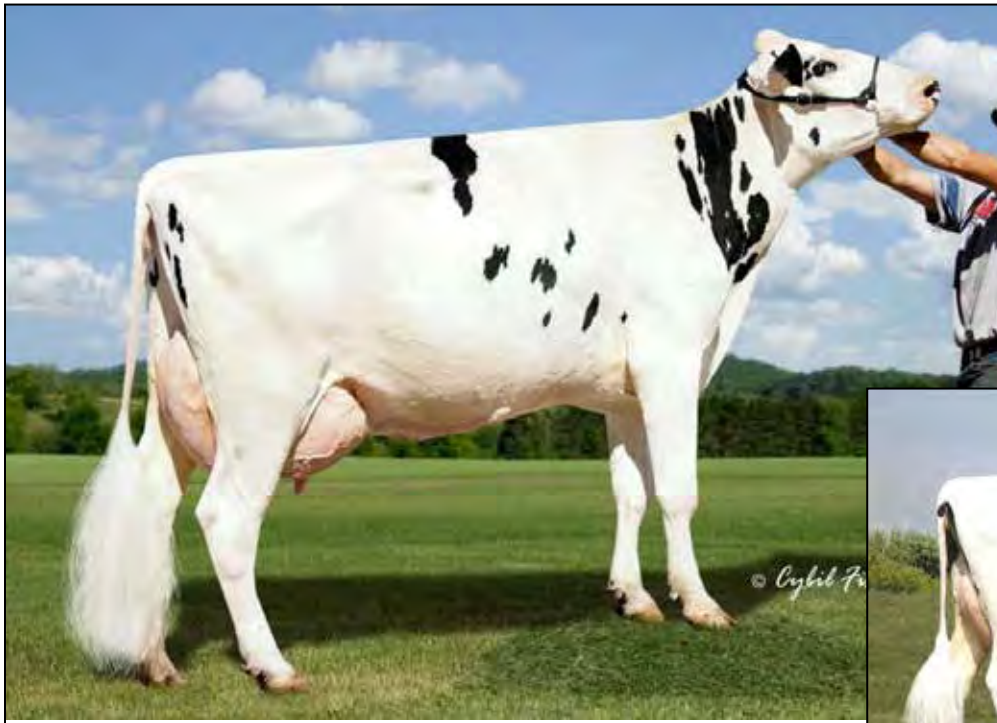
Silverridge Lindsay Tab VG-86-4YR-CAN
6-00 2x 365d 25785 4.1 1060 3.4 888
Life: 5 Lact 124944 3.9 4879 3.3 4184

7th Dam

Silverridge Leta Citation EX-CAN 2E
9-08 2x 365d 25651 3.8 981 3.4 860
Life: 9 Lact 180001 4.0 7158 3.4 6232

8th Dam

Indian Garden Ruth VG-85-CAN
7-02 2x 355d 24079 4.2 1001
Life: 6 Lact 100371 4.3 4341



LEASEWAY BAXTER EMBERS-ET EX-90
MATERNAL SISTER TO DAM OF LOT 36



BUDJON-JK CHAMPION ELENA-ET EX-90 EX-MS 2E
2ND DAM OF LOT 36

36

DEREK LEASE
UNION BRIDGE, MD 21791
410-775-0554

Luck-E Adonis-Red-ET
69989444 *TY *TD
PTA +734M +33F +2P 95R 8/16
PTA -.6PL 3.25SCS -1.7DPR 10.0%DCE
PTA +1.78T +1.45UDC +1.17FLC 92R 8/16
GTPI +1756G

Leaseway G W Atwood Ellcee
69206360 Excellent-90 EX-MS
4-06 2x 365d 25140 3.9 976 3.0 747
3-06 2x 331d 23530 3.9 907 3.0 713
2-04 2x 365d 22140 4.0 883 2.9 653

Maternal sisters to Ellcee

Leaseway Baxter Embers-ET EX-90
Leaseway Shottle Elyssa-ET EX-90
Leaseway Damion Emberlynn-ET EX-90

LEASEWAY ADONIS EDITH

840003137170154 *RC
Born: May 11, 2014

Willsbro Larson-ET
642862 *RC *TV *TL *TY
PTA +1077M +19F +32P 98R 8/16
PTA +1.85T +.68UDC +1.87FLC GTPI +1694G

Luck-E Advent Asia-ET
63437444 *RC
6-02 2x 365d 40150 4.9 1984 3.1 1261
Life: 1282d 113730 5.1 5814 3.2 3645

Maple-Downs-I G W Atwood-ET
8956379C Excellent-90 *TR *TV *TL *TY *TD
PTA -26M +30F +3P 99R 8/16
PTA +3.65T +2.58UDC +2.83FLC GTPI +1927G

Budjon-JK Champion Elena-ET
136892162 Excellent-90 EX-MS 2E
3-08 2x 365d 31870 3.8 1226 2.9 919
2-04 2x 365d 27980 3.6 1015 3.0 851
6-04 2x 328d 25070 3.5 880 2.8 700
5-01 2x 365d 22030 3.4 740 3.1 674
Life: 1654d 118090 3.6 4294 3.0 3523

3rd Dam

Budjon-JK Nobel Elly Mae EX-91 EX-MS
2-00 2x 365d 22300 3.8 849 3.2 723

4th Dam

Budjon-JK Linjet Eileen-ET EX-96 2E GMD DOM
5-06 2x 365d 44703 3.7 1647 3.3 1467
Life: 1481d 139720 3.6 5063 3.5 4821

- Res All-American Aged Cow 2005
- All-American 5 Yr Old Cow 2004

5th-9th Dams

Krull Broker Elegance EX-96 3E GMD DOM
5-07 2x 365d 40950 3.7 1522 3.3 1350
Life: 2356d 183710 3.7 6878 3.4 6267

- HM All-American Aged Cow 1999
- HM All-Canadian Mature Cow 1999
- 1st 125,000 Lb Cow International Show 2000
- 1st Produce International Show 2001-02-03-04

Krull Starbuck Excellency EX-90 GMD DOM
3-03 2x 365d 27140 3.5 937 3.4 930

Krull TT Excellency EX-90 VEEE DOM
3-02 2x 363d 24319 3.5 862 3.4 829
Life: 1733d 109780 3.7 4077 3.3 3605

Krull Boot Mark Excellency EX-92 2E GMD
6-06 2x 365d 27410 3.8 1040 3.1 868
Life: 3026d 201440 3.5 7105 3.0 4634

Krull Kingstead Excellency EX-92 4E GMD
12-4 2x 323d 21920 3.5 772
Life: 3364d 179790 3.6 6436



BUDJON-JK EMILYS EDAIR-ET EX-95 EEEEE 2E
MATERNAL SISTER TO DAM OF LOT 37

37

RIGGS & STILES, INC
 BERRYVILLE, VA 22611
 540-554-1175

KHW Elm-Park Acme-ET

61720218 Excellent-90 GM 4/11 *RC *TV *TL *TY *TD
 PTA -412M +6F +6P 99R 8/16
 PTA +1.7PL 3.27SCS -0.3DPR 7.3%DCE
 PTA +1.55T +1.86UDC +.40FLC 99R 8/16
 GTPI +1813G

Budjon-JK DD Europe-ET

138418555 Excellent-90
 3-01 2x 365d 26630 3.6 966 3.1 815
 4-04 2x 365d 26340 3.5 935 3.1 826
 2-01 2x 320d 22220 3.6 796 3.1 685

Maternal sister to Europe

Budjon-JK Emilys Edair-ET EX-95 2E

- Nominated All-American 4-Year-Old 2011
- 4th 4-Year-Old, International Show 2011
- Reserve All-American Jr 3-Year-Old 2010
- Reserve All-Canadian Jr 3-Year-Old 2010
- Supreme Champion Kingsmill Furturity 2010
- Completes 4 gens of All-American Nominees

TRI-KOEBEL ACME 4571-ET

840003137877834 (Pending)
 Born: June 1, 2016

Ladino Park Talent-Imp-ET

930377 *RC *TV *TL
 PTA -557M -44F -9P 99R 8/16
 PTA +.80T +9.90UDC +9.20FLC GTPI +2059G

Kamps-Hollow Altitude-ET

129136431 Excellent-95 EX-MS 2E DOM *RC *CV
 7-00 2x 365d 39690 4.7 1849 3.3 1310
 Life: 1844d 144460 4.4 6295 3.5 5015

Regancrest Dundee-ET

127640114 Excellent-95 *TV *TL *TY
 PTA -659M -36F -17P 99R 8/16
 PTA +1.17T +1.40UDC +.13FLC GTPI +1384G

Budjon-JK Storm Emily-ET

133351712 Excellent-92 EEEEE 2E DOM
 4-08 2x 365d 41090 3.7 1514 3.2 1329
 2-04 2x 365d 32730 3.7 1198 3.3 1071
 7-09 2x 284d 22380 3.4 767 3.2 713
 Life: 1143d 105520 3.6 3831 3.1 3269
 • Reserve All-American Sr 2-Year-Old 2005
 • 2nd Sr 2-Year-Old, International Show 2005
 • Int Champion, Midwest Spring Nat'l 2005

3rd Dam

Budjon-JK Linjet Eileen-ET EX-96 2E DOM

5-06 2x 365d 44703 3.7 1647 3.3 1467
 • Unanimous All-American Aged Cow 2005

4th Dam

Krull Broker Elegance EX-96 3E GMD DOM

Life: 2356d 183710 3.7 6878 3.4 6267

- HM All-American Aged Cow 1999 & 2000

5th Dam

Krull Starbuck Excellency EX-90 GMD DOM

3-03 2x 365d 27140 3.5 937 3.4 930

6th-8th Dams

Krull TT Excellency EX-90 VEEE DOM

Life: 1733d 109780 3.7 4077 3.3 3605

Krull Boot Mark Excellency EX-92 2E GMD

6-06 2x 365d 27410 3.8 1040 3.1 868

Life: 3026d 201440 3.5 7105

Krull Kingstead Excellency EX-92 4E GMD

Life: 3364d 179790 3.6 6436



KRULL ENCORE ELSIE-ET EX-94 2E
2ND DAM OF LOT 38

Maternal sisters to Esmeena

Mil-Lon SS Erica-ET EX-92 EEEEE *RC
4-08 2x 365d 45320 4.3 1928 3.0 1361
Budjon-JK Ex-Girlfriend-ET EX-91 EX-MS
2-03 2x 305d 24790 3.4 842 3.2 789
Budjon-JK Linjet Explicit-ET EX-90 EX-MS
2-05 2x 299d 21060 4.0 851 3.4 708
Budjon-JK Linjet Etta-ET EX-90
3-00 2x 365d 33880 3.6 1225 3.1 1052
Budjon-JK Linjet Ethel-ET EX-91 EX-MS
4-01 2x 365d 35712 4.1 1453 3.3 1172
Mil-Lon Elegant Elissa-ET EX-91 EEEEE *RC
5-04 2x 305d 34780 4.4 1517 3.1 1087
Krull Leduc Elsie EX-90
3-02 2x 365d 26660 3.4 913 3.2 854

38

RIGGS & STILES, INC & ENTOURAGE-LC
BERRYVILLE, VA 22611
540-554-1175

Braedale Goldwyn

10705608C GP-CAN EXTRA'05 GM 12/11 *TV *TL
PTA -358M +13F +1P 99R 8/16
PTA -.2PL 2.74SCS -.7DPR 6.1%DCE
PTA +1.79T +1.51UDC +1.49FLC 99R 8/16
GTPI +1880G

Budjon-JK Terson Esmeena-ET

136970428 Excellent-90
6-04 2x 365d 35260 3.7 1310 2.9 1028
4-07 2x 365d 27120 3.8 1038 3.0 826
3-06 2x 346d 23960 4.0 951 3.1 739
2-02 2x 365d 20330 4.0 821 3.3 679
Life: 1858d 134270 3.9 5244 3.1 4132

TRI-KOEBEL GOLDWYN ERIN-ET

840003135254327
Born: March 4, 2016

Shoremar James

5902195C Good Plus-81-CAN *TV *TL
PTA -.957M -9F -8P 99R 8/16
PTA -.36T -.37UDC -.55FLC GTPI +1253G

Braedale Baler Twine

6860888C VG-86-CAN 29* *TL
2-01 2x 365d 30906 4.9 1521 3.4 1052
Life: 1672d 133470 4.3 5798 3.6 4815

Innwood Terrason

6581869C Excellent-96-CAN
PTA -1289M -36F -35P 99R 8/16
PTA +1.21T +.70UDC +.67FLC GTPI +1210G

Krull Encore Elsie-ET

132549053 Excellent-94 EEEEE 2E
4-08 2x 365d 38740 3.8 1471 3.3 1284
7-06 2x 365d 34690 3.7 1283 3.4 1175
2-06 2x 365d 31516 3.6 1136 3.4 1073
Life: 1563d 133930 3.8 5043 3.5 4652
• Nom All-American Produce of Dam 2008
• Reserve All-WI 5-Year-Old 2007
• Grand Champion Midwest Fall/Nat 2006
• Res Grand Champ, Mideast Fall Nat'l 2006
• HM All-American Sr 2-Year-Old 2004

3rd Dam

Krull Elegant Rose-ET EX-93 2E GMD DOM
6-00 2x 365d 35770 4.0 1446 3.3 1167
Life: 2199d 139670 3.7 5174 3.4 4698
Krull Broker Elegance EX-96 3E GMD DOM
Life: 2356d 183710 3.7 6878 3.4 6267
• HM All-American Aged Cow 1999 & 2000
• HM All-Canadian Mature Cow 1999

4th Dam

Krull Starbuck Excellency EX-90 GMD DOM
3-03 2x 365d 27140 3.5 937 3.4 930
5th Dam
Krull TT Excellency EX-90 VEEE DOM
Life: 1733d 109780 3.7 4077 3.3 3605

6th Dam

Krull Boot Mark Excellency EX-92 2E GMD
6-06 2x 365d 27410 3.8 1040 3.1 868
Life: 3026d 201440 3.5 7105 3.0 4634

7th Dam

Krull Kingstead Excellency EX-92 4E GMD
12-4 2x 323d 21920 3.5 772
Life: 3364d 179790 3.6 6436



HICKORYMEA ODELIA-P-RED-ET EX-91 EX-MS
DAM OF LOT 39

39

WILLIAM GILBERT
KESWICK, VA 22947
434-989-2525

Aggravation Lawn Boy P-Red

133080890 Excellent-93 EEEE GM 8/08 *PO *RV *TL *TY
PTA -129M -20F +10P 99R 8/16
PTA +3.8PL 3.10SCS +1.4DPR 7.2%DCE
PTA +.06T +.56UDC +.02FLC 99R 8/16
GTPI +1752G

Hickorymea Odelia-P-Red-ET

139153086 Excellent-91 EX-MS 2E *PO
6-07 2x 365d 33850 3.2 1083 2.9 980
5-01 2x 365d 26760 3.6 953 3.0 806
2-03 2x 365d 23410 3.4 799 3.0 691
3-06 2x 365d 20010 3.6 722 3.1 617
Life: 1833d 127630 3.4 4398 3.0 3840
• 7 Generations of Polled

KULP-DALE L OVERLYNN-RED-ET

73260019
Born: September 1, 2015

Dudoc Bacculum-Red-ET

9104500C Very Good-87 *TV *TL
PTA -851M -51F -24P 99R 8/16
PTA -.05T +1.23UDC -.59FLC GTPI +1533G

Aggravation Briditte P-ET

130237903 Very Good-86 *B/R *PO
3-03 2x 365d 30370 3.7 1114 3.0 907
Life: 1916d 137110 3.8 5188 3.0 4102

KHW Kite Advent-Red-ET

133002953 Excellent-94 *TV *TL *TD
PTA -1205M -22F -28P 99R 8/16
PTA +1.70T +1.50UDC +1.18FLC GTPI +1585G

Hickorymea Para Ozone-P-ET

134387020 Very Good-88 EX-MS *RC *PO
3-05 2x 365d 28480 3.9 1103 3.0 844
2-01 2x 365d 23940 3.8 910 3.1 740
Maternal sister to Ozone
Hickorymea Shot Ovada-P-ET VG-86 VG-MS *PO
4-03 2x 365d 30630 3.8 1164 3.3 1000
• *Daughter of Ovada-P*
Hickorymea Manoman Opine-P EX-90
• *Sold for \$52,000 2012 National Convention Sale*

Maternal Sister to Odelia-P

Hickorymea Goldwyn Ought-P VG-86 *PO

Daughter of Ought-P

Hickorymea Signif Ohio-P-ET EX-90 *PO

• *Sold for \$62,000 at 2011 Pine-Tree Dairy Sale*

3rd Dam

Hickorymea Bwood Ossie-P-ET EX-91 GMD DOM

4-06 2x 365d 33710 3.8 1269 3.3 1106
Life: 2163d 149480 4.0 6027 3.5 5259

4th Dam

Hickorymea Elton Ovation P VG-89 GMD DOM

9-05 2x 365d 33840 3.7 1261 3.0 1023
Life: 2790d 217990 4.0 8632 3.3 7105

5th Dam

Hickorymea Lass Ovada P VG-86 EX-MS *PO

8-02 2x 365d 24870 3.8 935 3.2 796
Life: 2266d 140340 3.7 5142 3.3 4591

6th Dam

Hickorymea Hayday Olive VG-88 VEVV

6-03 2x 365d 28330 3.5 989 3.1 871

7th Dam

Beshore East Star Jem Holly VG-87

4-10 2x 305d 24510 3.7 916 3.0 741

40

JAMES & LAVAUN JANNEY
LEITCHFIELD, KY 42754
540-746-1777

Gillette Windhammer

8932157 Excellent-95 *BY *TV *TL
PTA +199M +41F +9P 98R 8/16
PTA -1.1PL 3.26SCS -4.0DPR 8.7%DCE
PTA +2.26T +1.96UDC +1.51FLC 97R 8/16
GTPI +1832G

Janney Phoenix Zane

70598722 Very Good-85 VG-MS

JANNEY WINDHAMMER ZINGY

840003013615168
Born: March 12, 2016

Sandy-Valley Bolton-ET

131823833 Excellent-90 GM 4/11 *BY *TV *TL
PTA +1340M +46F +33P 99R 8/16
PTA +1.42T +1.46UDC +1.05FLC GTPI +1911G

Gillette Blitz 2nd Wind

7352248 Very Good-88
2-02 3x 365d 39097 3.6 1422 3.0 1182

Windy-Knoll-View Phoenix-ET

62968892 Very Good-87 GM 8/11 *TV *TL
PTA -605M -2F -4P 99R 8/16
PTA +1.34T +1.23UDC +1.09FLC GTPI +1819G

Spgdale Blackbart Zandra

134954758 Excellent-90
6-06 2x 274d 25060 2.9 720 2.6 661
7-06 2x 315d 24150 2.8 673 2.8 675
5-07 2x 276d 23390 2.9 687 2.6 618
4-07 2x 294d 22370 2.6 579 2.6 586
2-04 2x 305d 21690 3.2 702 2.8 602
3-07 2x 306d 20440 2.6 538 2.8 573
Life: 1860d 141770 2.9 4063 2.7 3867

3rd Dam

Marrob Integrity Zubees VG-88
9-10 2x 343d 17950 3.3 595 2.89 523

4th Dam

Spring-Belle Chspke Mint GP-83

5th Dam

Spring-Belle Steady Mineral VG-87 VG-MS
3-11 2x 323d 28590 3.6 1022 3.2 901
Life: 1995d 144220 3.6 5236 3.1 4400

6th Dam

Spring-Belle Mars VG-88 VG-MS
5-08 2x 324d 24350 3.9 957 3.1 754
Life: 2705d 166280 3.6 5968 3.1 5086

7th Dam

Spring-Belle Apollo Mitten VG-87
5-09 2x 365d 22490 3.7 822 3.0 677

8th Dam

Spring-Belle Astro Mello VG-87 GMD DOM
7-03 2x 290d 19650 3.6 711 3.0 586
Life: 1786d 105980 3.6 3784 3.0 1153

9th Dam

Spring-Belle Mae Transmit GP-82
Life: 2440d 139970 3.5 4933 2.9 1035

10th Dam

Sarob Posch Prince Marietta EX-92 EEEE 2E GMD
7-10 2x 305d 22920 3.8 867
Life: 3325d 213080 3.9 8411

41

JAMES & LAVAUN JANNEY
LEITCHFIELD, KY 42754
540-746-1777

Gillette Windhammer

8932157 Excellent-95 *BY *TV *TL
PTA +199M +41F +9P 98R 8/16
PTA -1.1PL 3.26SCS -4.0DPR 8.7%DCE
PTA +2.26T +1.96UDC +1.51FLC 97R 8/16
GTPI +1832G

Janney Goldstar Zinnia

71469834

JANNEY WINDHAMMER ZEN

840003013615176
Born: April 8, 2016

Sandy-Valley Bolton-ET

131823833 Excellent-90 GM 4/11 *BY *TV *TL
PTA +1340M +46F +33P 99R 8/16
PTA +1.42T +1.46UDC +1.05FLC GTPI +1911G

Gillette Blitz 2nd Wind

7352248 Very Good-88
2-02 3x 365d 39097 3.6 1422 3.0 1182

Mr Cycle Goldstar-ET

70406255 Very Good-87 *TV *TL *TY *TD
PTA -591M -4F -10P 95R 8/16
PTA +1.30T +1.28UDC +1.29FLC GTPI +1715G

Janney Phoenix Zane

70598722 Very Good-85 VG-MS

3rd Dam

Spgdale Blackbart Zandra EX-90
6-06 2x 274d 25060 2.9 720 2.6 661
Life: 1860d 141770 2.9 4063 2.7 3867

4th Dam

Marrob Integrity Zubees VG-88
9-10 2x 343d 17950 3.3 595 2.89 523

5th Dam

Spring-Belle Chspke Mint GP-83

6th Dam

Spring-Belle Steady Mineral VG-87 VG-MS
3-11 2x 323d 28590 3.6 1022 3.2 901
Life: 1995d 144220 3.6 5236 3.1 4400

7th Dam

Spring-Belle Mars VG-88 VG-MS
5-08 2x 324d 24350 3.9 957 3.1 754
Life: 2705d 166280 3.6 5968 3.1 5086

8th Dam

Spring-Belle Apollo Mitten VG-87
5-09 2x 365d 22490 3.7 822 3.0 677

9th Dam

Spring-Belle Astro Mello VG-87 GMD DOM
7-03 2x 290d 19650 3.6 711 3.0 586
Life: 1786d 105980 3.6 3784 3.0 1153

10th Dam

Spring-Belle Mae Transmit GP-82
Life: 2440d 139970 3.5 4933 2.9 1035

11th Dam

Sarob Posch Prince Marietta EX-92 EEEE 2E GMD
7-10 2x 305d 22920 3.8 867
Life: 3325d 213080 3.9 8411

42

JAMES & LAVAUN JANNEY
LEITCHFIELD, KY 42754
540-746-1777

Canyon-Breeze At Airlift-ET

62897620 Very Good-89 *TV *TL *TY *TD
PTA +868M +26F +3P 98R 8/16
PTA -.1PL 2.87SCS -.14DPR 7.0%DCE
PTA +3.46T +1.91UDC +4.12FLC 98R 8/16
GTPI +2031G

Janney Altitude Krista

840003013615057 *RC

JANNEY AIRLIFT KARA

8400030136151673
Born: April 2, 2016

Maple-Downs-I G W Atwood-ET

8956379C Excellent-90 *TR *TV *TL *TY *TD
PTA -26M +30F +3P 99R 8/16
PTA +3.65T +2.58UDC +2.83FLC GTPI +1927G

Canyon-Breeze S Auburn-ET

63175334 Excellent-90 EEEEE DOM
3-04 3x 365d 35090 3.8 1347 2.9 1024
2-00 3x 365d 33240 3.4 1146 2.8 918

BBM CP Altitude-Red-ET

70684472 *TP *TV *TL *TY *TD
PTA -777M -5F -9P 92R 8/16
PTA +1.64T +2.20UDC +1.59FLC GTPI +1830G

Janney Lucius Katina

70598697 Very Good-86 VG-MS
3-04 2x 273d 22140 2.6 594 3.0 656

Gloryland Zenith Lucius-ET

140973666

Janney Lee Kristin

51716160 Excellent-90 EX-MS
3-04 2x 325d 26870 3.1 840 3.2 870
8-05 2x 286d 26010 2.6 688 3.0 769
4-05 2x 305d 24600 3.2 790 3.0 750
6-08 2x 279d 23730 2.9 693 2.9 681
5-09 2x 282d 22450 2.9 642 3.0 675
2-02 2x 305d 20270 2.7 546 3.3 679
Life: 1938d 151190 3.0 4464 3.1 4684

43

EASTERN KENTUCKY UNIVERSITY
C/O JUSTIN MCKINNEY
RICHMOND, KY 40475
859-622-1310

De-Su Bkm Mccutchen 1174-ET

69990138 99%RHA-I *TV *TL *TY *TD
PTA +961M +55F +34P 99R 8/16
PTA +2.8PL 2.84SCS -.3DPR 3.4%DCE
PTA +3.23T +2.91UDC +2.72FLC 99R 8/16
GTPI +2468G

Eastern G C Kit Kat 1306

72375663 Very Good-85 VG-MS
1-11 2x 365d 27960 3.6 995 2.9 813

EASTERN MCCUTCH KITKAT 1505

840003128501021 99%RHA-I
Born: January 26, 2015

Due: November 16, 2016 to De-Su Ferdinand 12489-ET
7H012611

De-Su 521 Bookem-ET

66636657 99%RHA-I Very Good-88 *TR *TV *TL *TY
PTA +1311M +30F +48P 99R 8/16
PTA +1.59T +1.10UDC +1.14FLC GTPI +2342G

Sully Shottle May-TW

138218285 Excellent-90 DOM
5-04 3x 365d 38970 3.5 1354 3.0 1152

Mr Chassity Gold Chip-ET

140145553 Excellent-92 *TR *TV *TL *TY *TD
PTA -268M +0F -23P 99R 8/16
PTA +2.47T +2.48UDC +2.24FLC GTPI +1876G

Eastern Instamatic Kit Kat

70306662 Very Good-86 VG-MS
2-09 2x 279d 24080 3.3 793 2.9 707
1-09 2x 287d 21440 3.2 688 2.8 606

3rd Dam

Lee-Lynne Rdy Kit Kat EX-90 EX-MS

1-11 2x 305d 25800 3.3 863 2.8 727
4-06 2x 362d 24670 3.7 907 2.9 720

44

EASTERN KENTUCKY UNIVERSITY
C/O JUSTIN MCKINNEY
RICHMOND, KY 40475
859-622-1310

Gen-Mark Stmatic Sanchez

134422312 Excellent-94 EEEE *TR *TV *TL *TY *TD
PTA +515M -16F +8P 99R 8/16
PTA -8PL 3.20SCS -3.5DPR 6.8%DCE
PTA +2.04T +1.16UDC +1.84FLC 99R 8/16
GTPI +1632G

Eastern Outbound Charm 1115

70306669 Very Good-87 VG-MS
3-08 2x 331d 28590 3.8 1087 3.1 874
1-07 2x 365d 21680 4.1 879 3.2 704
2-09 2x 254d 21300 3.8 801 3.0 649

EASTERN SANCHEZ CHARM 1513

840003128501027
Born: June 9, 2015

Due: April 2, 2016 to De-Su Ferdinand 12489-ET
7H012611

Comestar Stormatic

6947936 EX-CAN GM 2/07 *TV *TL
PTA +28M -19F -9P 99R 8/16
PTA +.74T -.24UDC +1.70FLC GTPI +1459G

Gen-Mark BW Mar Winnie-ET

131652910 Excellent-90 2E GMD
4-08 2x 365d 43690 3.6 1555 2.7 1172
Life: 1463d 132550 3.6 4737 2.9 3823

Schilldale Outbound-ET

134468987 Very Good-87 *TV *TL *TY
PTA +358M -8F -8P 99R 8/16
PTA +1.35T +1.15UDC +1.58FLC GTPI +1699G

Eastern Dolman Charm 721

65354205 Good-77
3-10 2x 365d 32190 3.2 1030 3.0 950
2-00 2x 365d 28310 3.3 934 2.8 793

45

NICOLE HARDY
PERKASIE, PA 18944
215-795-0161

Mr Apples Armani-ET

68571374 Excellent-90 *RC *RV *TL *TY *TD
PTA -1432M +32F -4P 98R 8/16
PTA +1.9PL 2.83SCS +1.1DPR 5.6%DCE
PTA +2.02T +1.97UDC +2.26FLC 96R 8/16
GTPI +2056G

H-JNB Mutant Frankie-Red

140807644

H-JNB ARMANI FROZEN

840003128668746 *RC
Born: December 14, 2015

Braedale Goldwyn

10705608C GP-CAN EXTRA'05 GM 12/11 *TV *TL
PTA -358M +13F +1P 99R 8/16
PTA +1.79T +1.51UDC +1.49FLC GTPI +1880G

KHW Regiment Apple-Red-ET

135511521 Excellent-96 EEEEE 3E DOM *CV
9-01 2x 365d 36750 4.3 1582 3.3 1211
Life: 2898d 240640 4.7 11394 3.6 8559

Islehaven Champions Mutant-ET

8360683C Very Good-85 *RC *TV *TL
PTA -1757M -14F -46P 98R 8/16
PTA -2.13T -3.35UDC -1.31FLC GTPI +1070G

H-JNB F3 Fiona

138321417
4-03 3x 305d 18900 2.5 477 2.7 513
3-02 3x 302d 18170 2.7 493 2.7 490
2-02 3x 273d 12210 3.0 368 3.0 362



BUROCO JUROR EDITH EX-94 EEEEE 4E
2ND DAM OF LOT 46

46

COLE LEONARD
SPOTTSWOOD, VA 24476
540-377-5750

Mr Apples Armani-ET

68571374 Excellent-90 *RC *RV *TL *TY *TD
PTA -1432M +32F -4P 98R 8/16
PTA +1.9PL 2.83SCS +1.1DPR 5.6%DCE
PTA +2.02T +1.97UDC +2.26FLC 96R 8/16
GTPI +2056G

Pyramid Destry Ebony

70280381 Very Good-86 VG-MS *TR
3-02 2x 305d 22580 4.0 902 3.1 694
2-02 2x 305d 19150 4.2 797 3.1 586

COLEBELLE ARMANI ELLIE

143729707
Born: March 5, 2015
12K GTPI +1689G
Due: February 24, 2017 to Mr Holtstuffs Hypnotic-ET
(Female) 94HO17973

Braedale Goldwyn

10705608C GP-CAN EXTRA'05 GM 12/11 *TV *TL
PTA -358M +13F +1P 99R 8/16
PTA +1.79T +1.51UDC +1.49FLC GTPI +1880G

KHW Regiment Apple-Red-ET

135511521 Excellent-96 EEEEE 3E DOM *CV
9-01 2x 365d 36750 4.3 1582 3.3 1211
Life: 2898d 240640 4.7 11394 3.6 8559

Scientific Destry-ET

138122625 Excellent-92 EX-MS *RC *TV *TL *TY
PTA -670M -20F +0P 99R 8/16
PTA +2.05T +2.15UDC +.57FLC GTPI +1951G

Buroco Juror Edith

8426013C Excellent-94 EEEEE 4E
6-05 2x 365d 37340 4.1 1541 3.2 1201
10-0 2x 365d 37000 4.3 1593 3.0 1098
8-02 2x 365d 36570 4.7 1708 3.3 1205
4-05 2x 305d 29050 4.1 1184 3.1 914
3-03 2x 359d 28410 4.1 1172 3.2 922
12-3 2x 322d 27726 4.4 1223 3.0 832 RIP
2-02 2x 345d 21460 4.3 921 3.4 721
Life: 3323d 273810 4.5 12211 3.1 8511

Maternal sisters to Ebony

Pyramid Astro Elegant EX-92 2E

3-01 2x 365d 29070 5.4 1566 3.3 958

- Res Jr All-American Sr 2-Year-Old 2006
- Res Jr All-American Winter Yearling 2005
- Nom All-American Winter Yearling 2005

Pyramid Durham Eternity-ET VG-88 VG-MS

2-11 2x 365d 28740 4.2 1204 3.4 965

4-00 2x 305d 21930 3.7 822 3.3 715

- HHM Jr All-American Milking Yearling 2010

EDITH!

- Nom. Jr All-American 4-Yr-Old 2006
- Nom. Jr All-American Sr. 3-Yr-Old 2005
- HHM Jr All-American Jr. Yearling, 2003
- 2nd Aged Cow Northeast Fall National 2008
- Sr. & Grand Champ Northeast Fall Jr Show 2008
- Res. Sr/Res. Grand Champ VT Holstein Show 2005
- Res Jr Champion Northeast Fall National 2002

Ked Juror-ET

2124357 Good Plus-82 GM 2/01 *TV *TL *TD

Larisac Stardust Eddie

10636540C Excellent-90-2E-CAN 3*

6-04 2x 365d 28880 4.3 1248 3.0 862

Life: 9 Lacs 201842 4.2 8448 3.2 6380

- 1st Senior 2-Year-Old, Rimouski 2000
- 3rd Senior 2-Year-Old, QC Expo 2000



PUTNAM-FARM DSTRY JASMYN-TW EX-91 EX-MS
DAM OF LOT 47

47

FAIRMONT FARM, INC
EAST MONTPELIER, VT 05651
802-223-3868

Eclipse Atwoods Archrival-ET

H01786521
PTA -33M +23F -1P 78R 8/16
PTA +.9PL 2.87SCS -2.4DPR 8.0%DCE
PTA +3.62T +2.70UDC +2.60FLC 77R 8/16
GTPI +1973G

Putnam-Farm Dstry Jasmyrn-TW

66996948 Excellent-91 EX-MS
2-01 2x 305d 20920 3.9 814 2.9 603
• 5th Summer Yearling WDE 2011
• 1st Summer Yearling North-East Fall Nat'l 2011

MS PUTMAN-FARM RVAL JANA-ET

840003132554797
Born: December 1, 2015

Maple-Downs-I G W Atwood-ET

8956379C Excellent-90 *TR *TV *TL *TY *TD
PTA -26M +30F +3P 99R 8/16
PTA +3.65T +2.58UDC +2.83FLC GTPI +1927G

Anya-ET

1402793646

Scientific Destrty-ET

138122625 Excellent-92 EX-MS *RC *TV *TL *TY
PTA -670M -20F +0P 99R 8/16
PTA +2.05T +2.15UDC +.57FLC GTPI +1951G

Wilsondale Outside Jaime-ET

140991163 Excellent-91 EEEEE
6-08 2x 305d 29600 2.9 855 2.7 788
8-00 2x 305d 25810 3.2 828 2.6 660

Maternal sisters to Jaime

Wilsondale Mr Sam Jemma-ET EX-93

Wilsondale Mr Sam Jana-ET EX-90

3rd Dam

Wilsondale Skychief Jade-ET VG-87 EX-MS

2-11 2x 365d 25645 3.3 848 3.3 842
1-10 2x 346d 19420 3.3 635 3.1 596

4th Dam

Wilsondale MPH Jasmine-ET EX-94 EEEEE 3E

5-03 2x 365d 32050 3.3 1070 3.2 1011
Life: 1947d 113610 3.5 3911 3.3 3700

5th Dam

Juniper Jackpot Jade-ET EX-93 EEEEE 4E

9-01 2x 365d 30870 3.3 1031 3.1 964
Life: 3369d 218060 3.4 7466 3.2 6897

• Maternal sister to Juniper Rotate Jed EX-92

6th Dam

Hurl-Four Tradition Jacky EX-90 EEVEE GMD DOM

5-10 2x 365d 37110 4.1 1506 3.4 1250

7th Dam

Nowerland Valiant Jacky EX-90 2E GMD DOM

5-05 2x 365d 29540 3.9 1152 3.2 937

8th Dam

Nowerland Jacky Elevation EX-92 2E GMD DOM

4-04 2x 365d 29260 4.2 1238 3.3 968
Life: 2053d 131040 4.1 5413 3.4 3708

9th Dam

Nowerland Astronaut Jacky VG-86 GMD DOM

3-00 2x 333d 20040 3.5 706
Life: 2738d 155740 3.5 5401



VT-POND-VIEW JASPR LASSA-ET EX-94
2ND DAM OF LOT 48



VT-POND-VIEW RUBENS LILYANA EX-95 EEEEE 4E
3RD DAM OF LOT 48

48

FAIRMONT FARM, INC
EAST MONTPELIER, VT 05651
802-223-3868

Val-Bisson Doorman-ET

107281711C 99%RHA-I VG-87-CAN ST'16*TV *TL *TY
PTA -25M +42F +25P 99R 8/16
PTA +2.5PL 2.58SCS -0.6DPR 5.8%DCE
PTA +3.54T +2.46UDC +2.23FLC 98R 8/16
GTPI +2354G

VT-Pond-View Atwood Lady-ET

141962513 Excellent-90 EX-MS *TR *TL *TD
3-02 2x 358d 26520 3.1 813 3.0 786
2-03 2x 312d 21770 3.6 791 2.9 641

FAIRMONT DOORMAN LILYMAY-ET

840003132555006 99%RHA-I
Born: March 4, 2016

De-Su 521 Bookem-ET

66636657 99%RHA-I Very Good-88 *TR *TV *TL *TY
PTA +1311M +30F +48P 99R 8/16
PTA +1.59T +1.10UDC +1.14FLC GTPI +2342G

Val-Bisson Shottle Imelda-ET

106173432 Very Good-89-CAN

Maple-Downs-I G W Atwood-ET

8956379C Excellent-90 *TR *TV *TL *TY *TD
PTA -26M +30F +3P 99R 8/16
PTA +3.65T +2.58UDC +2.83FLC GTPI +1927G

VT-Pond-View Jaspr Lassa-ET

140521328 Excellent-94 EEEEE
5-03 2x 365d 33770 5.4 1835 2.8 957
4-01 2x 365d 28430 5.5 1551 2.9 827
2-10 2x 365d 25650 4.1 1062 3.0 764

Maternal sisters to Lassa

VT-Pond-View Braxton Laurie EX-90

VT-Pond-View Shot Logan-ET EX-90

VT-Pond-View Advent Lana-ET EX-90 EX-MS 2E

3rd Dam

VT-Pond-View Rubens Lilyana EX-95 EEEEE 4E

11-11 2x 365d 34380 3.8 1311 3.0 1018

Life: 3409d 255670 4.2 10658 3.3 8357

- 1st 150,000lb Cow North East Fall Nat'l 2015
- Sr Champ VT Holstein Show 2014
- 2nd 125,000lb Cow North East Fall Nat'l 2014
- 2nd 125,000lb Cow North East Fall Nat'l 2010

4th Dam

Twin-Wind-TC Broker Lass-ET EX-95 EEEEE 4E

8-01 2x 365d 33390 4.5 1495 3.2 1073

Life: 3712d 253310 5.0 12659 3.6 9192

- Res Grand, North-E Fall National 2002
- 1st Jr 2-Year-Old, North-E Fall National 1996
- Nom All-American Produce of Dam 2010

5th Dam

C Grossville Ultimate Libby EX-92 EEEEE

5-06 2x 365d 27230 4.1 1103 3.1 834

- Nom All-American 4-Year-Old 1994
- All-American Spring Yearling 1991
- All-American Spring Calf 1990

6th Dam

Grossville Freddy Lynn VG-85-CAN

3-06 2x 299d 17046 3.9 668



WINDY-KNOLL-VIEW PROTEGE EX-90 EX-MS
DAM OF LOT 49



WINDY-KNOLL-VIEW PROMIS-ET EX-95 2E GMD DOM
2ND DAM OF LOT 49

49

RIGGS & STILES, INC
BERRYVILLE, VA 22611
540-554-1175

Pine-Tree Sid

62175895 VG-86-CAN ST'10 *TV *TY
PTA -456M +5F -7P 99R 8/16
PTA -2.4PL 2.90SCS -4.2DPR 6.6%DCE
PTA +2.26T +2.00UDC +.08FLC 99R 8/16
GTPI +1598G

Windy-Knoll-View Protege

63082909 Excellent-90 EX-MS
4-03 2x 365d 36100 4.0 1433 3.2 1150
2-04 2x 365d 29760 4.3 1266 3.3 985
Life: 1387d 117240 4.3 5052 3.4 3982

Maternal sister to Protege

Windy-Knoll-View Pledge-ET EX-95 2E GMD DOM

4-01 2x 365d 41190 3.8 1577 3.2 1315
Life: 1853d 162180 4.0 6497 3.2 5257

- Grand Champion Eastern Fall National 2011
- Res All-American 125,000 Lb Cow 2008
- Unanimous All-American 5-Yr-Old Cow 2007

OAKLAND-VIEW PRMIS 4635-ET

840003137877898
Born: June 21, 2016

Regancrest-Mr Drham Sam-ET

207184639 GM 8/06 *TR *TV *TL
PTA -482M +3F -10P 99R 8/16
PTA +.52T +.35UDC +.92FLC GTPI +1478G

Pine-Tree Finley Minnie-ET

61733050 Excellent-90 EX-MS DOM
4-09 2x 305d 26120 3.5 911 3.0 786

Braedale Goldwyn

10705608C GP-CAN EXTRA'05 GM 12/11 *TV *TL
PTA -358M +13F +1P 99R 8/16
PTA +1.79T +1.51UDC +1.49FLC GTPI +1880G

Windy-Knoll-View Promis-ET

18049401 Excellent-95 EEEEE 2E GMD DOM *TV *TL
4-08 2x 365d 44120 3.7 1633 3.4 1484
3-05 2x 365d 34670 3.8 1327 3.4 1171
Life: 1680d 143630 3.7 5339 3.5 4984

- Res All-American 5-Yr-Old Cow 2003
- Grand Champion Eastern National 2003

4th Dam

Windy-Knoll-View Creek Pauline VG-88 VEVE

4-09 2x 305d 18960 3.6 690 2.8 537

Startmore Rudolph-ET

5470579C EX-CAN GM 8/07 *TV *TL
12236230 Excellent-94 EEEVE 3E DOM
5-08 2x 365d 27970 4.5 1267 3.3 932
7-10 2x 365d 20680 4.6 947 3.3 691
4-02 2x 305d 20690 4.3 893 3.4 706
Life: 2298d 123650 4.7 5777 3.3 4077

- 1st Dry Aged Cow, Eastern National 1992
- Five-Time All-Pennsylvania Winner



MS ROLLEN-NS CAM LEXIE P-ET VG-85 VG-MS
DAM OF LOTS 50 & 51

50

RIGGS & STILES, INC & ENTOURAGE-LC
BERRYVILLE, VA 22611
540-554-1175

STILES MONTEREY 4188-ET

840003130389927 99%RHA-I *RC *TL *TD
Born: June 6, 2016
12K GTPI +2400G +176M +49F +22P 75R 8/16
PTA +575NM +.16%F +.06%P
PTA +5.3PL 2.90SCS +2.5DPR 4.2%DCE
PTA +2.06T +2.10UDC +1.75FLC 74R 8/16

Bred: to Bacon-Hill Pety Modesty-ET

View-Home Monterey-ET

69087180 99%RHA-I *TV *TL *TY *TD
PTA +1012M +65F +43P 79R 8/16
PTA +5.4PL 2.94SCS +.4DPR 2.9%DCE
PTA +3.35T +3.03UDC +2.44FLC 79R 8/16
GTPI +2628G

MS Rollen-NS Cam Lexie P-ET

71446355 Very Good-85 VG-MS *RC *PC
2-01 2x 305d 19160 4.9 932 3.3 633
3-07 3x 215d 18450 4.5 833 3.2 590

And

View-Home Powerball-P-ET

840003011789392 *PC *TV *TL *TY *TD
PTA +1166M +45F +55P 79R 8/16
PTA +3.7PL 3.00SCS +2.4DPR 4.6%DCE
PTA +1.77T +1.28UDC +.84FLC 79R 8/16
GTPI +2448G

Sheema Jeeves Cameron-ET

66747411 *TV *TL *TY *TD
PTA +158M +10F -4P 99R 8/16
PTA +1.15T +1.52UDC +1.52FLC GTPI +2063G

Tiger-Lily Dst Liz P-Red-ET

69405972 Very Good-86 VG-MS *PO
4-05 2x 365d 30940 3.9 1203 3.1 952
2-04 2x 365d 26880 3.8 1020 3.3 887

51

MS GOSHENS PWERBAL 4248-ET

840003130389987 *TR *PO *TL *TD
Born: August 7, 2015
40K GTPI +2322G +284M +32F +21P 76R 8/16
PTA +510NM +.08%F +.05%P
PTA +4.9PL 2.90SCS +4.5DPR 5.1%DCE
PTA +1.41T +1.71UDC +.85FLC 8/16

Bred: to Mr Ansly Addiction-P-Red-ET

3rd Dam

Tiger-Lily Lawnboy Lulu-Red VG-87 VG-MS

4-07 3x 365d 37720 4.5 1705 3.3 1226
2-01 3x 365d 24750 4.4 1084 3.5 857

4th Dam

Kings-Ransom Sept Lima-ET EX-91 EX-MS 2E

5-01 3x 365d 39260 4.8 1893 3.2 1242
Life: 2368d 206680 4.6 9576 3.1 6457

5th-7th Dams

Kings-Ransom Amel Lemon EX-93 2E GMD DOM

3-03 3x 375d 38470 4.0 1534 3.2 1232
Life: 1261d 112120 3.7 4172 3.2 3617

Kings-Ransom E Vision Lisa VG-85 GMD

5-11 3x 314d 31170 4.2 1319 3.3 1016
Life: 1413d 140350 3.9 5476 3.3 4562

Kings-Ransom Trifecta Lilac VG-88 VVVVE

7-01 3x 365d 33900 3.8 1302 3.3 1111
Life: 2711d 221270 3.5 7754 3.2 7058



SPOTS-PRIDE PRONTO GALAXY EX-93 EEEEE 2E DOM
2ND DAM OF LOT 52

52

ANDREA JOHNSON
DICKERSON, MD 28042
240-372-0740

Lincoln-Hill Shot Laser

62072898 Excellent-92 EEEE *TR *TV *TL *TY *TD
PTA +403M +43F +7P 99R 8/16
PTA -.5PL 3.22SCS +.6DPR 6.1%DCE
PTA +1.56T +1.18UDC +.44FLC 99R 8/16
GTPI +1926G

Spots-Pride GC Grand-ET

71506045 Very Good-85 VG-MS
2-03 2x 273d 17690 3.3 588 2.8 495

ARTIE-JAY SHOT GWEN

840003125541474
Born: December 29, 2014

Picston Shottle-ET

GBR 598172 EX-95-GBR GM 12/11 *TV *TL
PTA +478M +26F +10P 99R 8/16
PTA +1.24T +.91UDC +.76FLC GTPI +1925G

Lincoln-Hill Ito Nibbles

60542016 Very Good-88 GMD DOM
3-00 2x 305d 34190 3.6 1225 2.9 1006
Life: 986d 102260 3.8 3885 2.9 3006

Mr Chassity Gold Chip-ET

140145553 Excellent-92 *TR *TV *TL *TY *TD
PTA -268M +0F -23P 99R 8/16
PTA +2.47T +2.48UDC +2.24FLC GTPI +1876G

Spots-Pride Pronto Galaxy

136056924 Excellent-93 EEEEE 2E DOM
5-01 2x 365d 35490 3.2 1153 2.9 1028
3-10 2x 365d 32610 3.2 1033 2.8 900
2-03 2x 365d 31140 3.1 951 2.8 872
6-03 2x 277d 27450 3.7 1011 2.8 772
Life: 1481d 133970 3.3 4407 2.8 3796

Galaxy

- 1st Aged Cow Washington Co. District Show 2010 & 2011
- Grand Champ/Best BBO Washington Co. District Show 2009
- 1st Sr 2-Yr-Old Maryland Spring Show 2007
- Jr. All Maryland Fall Calf 2005
- 1st Jr. Fall Calf Maryland Spring Show 2005
- Res Jr Champion Jr. Show Maryland Spring Show 2005

Windy-Knoll-View Pronto-ET

132815961 Excellent-95 EEEE *TR *TV *TL *TY *TD
PTA +277M -1F -1P 99R 8/16
PTA +.80T +.19UDC +1.11FLC GTPI +1719G

Usnad Broker Adar

17313553 Excellent-92 EEEEE
7-05 2x 365d 31390 3.1 984 3.0 927
5-06 2x 365d 25150 3.6 914 3.2 795
1-11 2x 365d 25970 3.9 1020 3.2 843
3-04 2x 365d 24020 4.2 1000 3.3 802
8-09 2x 365d 23570 3.2 744 3.2 754
Life: 2532d 170600 3.7 6367 3.2 5514

53

COLE GOODHUE
FAIRFIELD, VT 05455
802-527-1230

Mr Apples Armani-ET

68571374 Excellent-90 *RC *RV *TL *TY *TD
PTA -1432M +32F -4P 98R 8/16
PTA +1.9PL 2.83SCS +1.1DPR 5.6%DCE
PTA +2.02T +1.97UDC +2.26FLC 96R 8/16
GTPI +2056G

Lotta-Hill Pico Lupie-Red

69921188
3-03 3x 303d 28540 3.3 943 3.1 896
4-05 3x 303d 21390 4.4 934 3.4 727
2-02 3x 305d 20400 4.3 870 3.3 674

LOTTA-HILL-C ARMANI SNOOPY

840003136784319 *RC
Born: April 30, 2016

Braedale Goldwyn

10705608C GP-CAN EXTRA'05 GM 12/11 *TV *TL
PTA -358M +13F +1P 99R 8/16
PTA +1.79T +1.51UDC +1.49FLC GTPI +1880G

KHW Regiment Apple-Red-ET

135511521 Excellent-96 EEEEE 3E DOM *CV
9-01 2x 365d 36750 4.3 1582 3.3 1211
Life: 2898d 240640 4.7 11394 3.6 8559

La Presentation Pico-Red-ET

102327659C Very Good-85 *TY
PTA +121M -10F -3P 99R 8/16
PTA -.3PL 2.79SCS -1.6DPR 11.1%DCE
PTA +1.35T +.25UDC +1.50FLC GTPI +1604G

Lotta-Hill Rampage 4060-Red

64269998
3-05 3x 301d 24370 3.5 846 3.1 752
2-05 2x 264d 12610 4.2 535 3.1 397

54

KRAIG SMITH
CATLETT, VA 20119
540-905-3720

Mr D Apple Diamondback

840003013721049 99%RHA-I *RC *RV *TL *TY *TD
PTA -332M +13F +11P 79R 8/16
PTA +.9PL 3.00SCS -1.5DPR 7.3%DCE
PTA +3.41T +2.50UDC +2.69FLC 78R 8/16
GTPI +2026G

Gracy Charger Advnt Sun-Red

69347861 Very Good-85

NOLANDIA DIMNDBK SUNKIS-RED

840003138636537 99%RHA-I
Born: June 15, 2016

Val-Bisson Doorman-ET

107281711C 99%RHA-I VG-87-CAN ST'16*TV *TL *TY
PTA -25M +42F +25P 99R 8/16
PTA +3.54T +2.46UDC +2.23FLC GTPI +2354G

Ms Delicious Apple-Red-ET

139236776 Excellent-94 EEEEE 2E *TV *TD
7-02 2x 365d 46510 4.0 1844 3.1 1424
Life: 1427d 149130 3.9 5804 3.1 4675

Hollandya Charger-Red-ET

68574425 Very Good-86 *TV *TL *TY *TD
PTA -535M -7F +4P 97R 8/16
PTA +1.45T +1.41UDC +.70FLC GTPI +1837G

Pine-Entrance Ad Shiloh-Red

63360117 Very Good-87 VG-MS
4-11 3x 365d 27530 3.4 923 3.0 834
2-00 3x 339d 27210 3.7 1017 3.1 837
3-00 3x 298d 23690 3.5 837 3.2 747
4-00 3x 294d 21190 3.7 790 3.1 658
Life: 1425d 105250 3.6 3749 3.1 3243

4th Dam

Spring-Fed Dgene Sprite-Red VG-86 VG-MS

3-01 3x 305d 19590 2.9 562 3.2 634
1-11 2x 358d 16270 3.7 604 3.4 565

5th Dam

Spring-Fed Json Sprinkle-TW VG-86 VG-MS

5-08 2x 331d 38390 2.8 1092 2.9 1121
Life: 1707d 140360 3.4 4823 3.0 4206

6th Dam

Lampport Spec-Red VG-87 EX-MS

6-00 2x 308d 21890 4.3 951 3.1 683
Life: 2662d 172890 4.2 7190 3.1 5446

KHW Kite Advent-Red-ET

133002953 Excellent-94 *TV *TL *TD

Spring-Fed Talnt Shasta-Red

137203468 Good Plus-83 DC
4-05 3x 297d 26140 3.6 950 3.1 801
5-05 3x 305d 25250 3.8 953 3.2 805
3-03 3x 365d 24760 3.5 856 3.2 789
2-04 3x 293d 21310 3.6 767 3.0 643
Life: 1594d 112450 3.7 4126 3.1 3541



LUCK-E GOLDWYN AALIYAH-ET EX-94 EEEEE 2E
MATERNAL SISTER TO LOTS A & B

A

5 #1 EMBRYOS

Direct Transfer
Sire: **Pine-Tree Sid**

THOMAS, SCHAAPMAN & PARKS
WARNER ROBINS, GA 31088
478-230-4108

B

5 #1 EMBRYOS

Direct Transfer
Sire: **Regancrest Elton Durham-ET**

Maternal sisters to Lot A & B

Luck-E Goldwyn Aaliyah-ET EX-94 EEEEE 2E

5-05 2x 305d 35590 4.7 1659 3.2 1129
Life: 1210d 105890 4.5 4738 3.4 3552
• Res Grand/Res Sr Champ Premier Nat'l Show 2015
• 2nd Aged Cow International Jr Show 2015
• Grand/Sr Champ PA Youth Fall Show 2015

Luck-E Braxton Apocalypse EX-92

Pine-Tree Sid

62175895 VG-86-CAN ST*10 *TV *TY
PTA -456M +5F -7P 99R 8/16
PTA -2.4PL 2.90SCS -4.2DPR 6.6%DCE
PTA +2.26T +2.00UDC +.08FLC 99R 8/16
GTPI +1598G

And

Regancrest Elton Durham-ET

2250783 Excellent-90 GM 8/01 *TR *CV *TL
PTA -697M -50F -9P 99R 8/16
PTA -1.2PL 2.99SCS +.0DPR 7.3%DCE
PTA +1.52T +1.31UDC +1.33FLC 99R 8/16
GTPI +1523G

Luck-E Outside Anxious

61893642 Excellent-94 EEEEE 3E
7-08 2x 365d 36660 4.8 1746 3.3 1211
3-02 2x 365d 26530 4.1 1087 3.1 811
5-04 2x 365d 35950 4.1 1486 3.2 1146
9-08 2x 365d 35860 4.3 1550 3.2 1151
2-01 2x 332d 22380 4.5 1001 3.1 699
Life: 2505d 202480 4.5 9061 3.3 6612

Comestar Outside-ET

6026421 Excellent-95 GM 1/08 *TV *TL
PTA -141M +14F -17P 99R 8/16
PTA +.36T +.00UDC +1.00FLC GTPI +1680G

Luck-E Blackice Artic

130894120 Excellent-90 EX-MS 2E
3-09 2x 365d 34670 4.4 1512 3.3 1140
2-03 2x 365d 31550 3.9 1242 3.2 1022
4-11 2x 365d 30910 4.7 1440 3.4 1061
Life: 1526d 122670 4.3 5299 3.4 4148

3rd Dam

Luck-E Charles Angel-ET EX-93 EX-MS 3E GMD DOM

7-09 2x 365d 43860 4.2 1827 3.5 1524
Life: 2376d 208510 4.4 9222 3.6 7562

4th Dam

Hart-Lyn Starbuck Ashley EX-94 EX-MS 2E GMD DOM

6-06 2x 365d 35720 4.2 1504 3.4 1200
Life: 1753d 124040 4.0 4994 3.4 4239

5th Dam

Kachina Valiant Act-ET VG-86 VG-MS

7-05 2x 365d 23450 4.4 1041 3.3 764
Life: 2103d 110050 4.6 5037 3.4 3742

6th Dam

Dodeb Matt Actress EX-93 EEEE 3E

3-00 3x 305d 27110 4.2 1131
Life: 2348d 141870 4.3 6058

7th Dam

Lamkinland B Matt Actress VG-85 VG-MS

5-04 3x 305d 20780 3.9 820



AUTUMN-RIDGE OTSD BAMBOO-ET EX-91 2E GMD DOM
FULL SISTER TO DAM OF LOTS C & D

C

5 #1 EMBRYOS

Direct Transfer
 Sire: **Walnutlawn Solomon**

VAN ERK DAIRY, LLC
 HAVILAND, OH 45851
 419-576-7176

Walnutlawn Solomon

11775998C 99%RHA-I *TV *TL *TY *TD
 PTA -13M +25F +9P 79R 8/16
 PTA -0.9PL 2.93SCS -0.3DPR 6.2%DCE
 PTA +3.80T +2.93UDC +2.26FLC 79R 8/16
 GTPI +2109G

Autumn-Ridge OT Bojengl-ET

134527446 Excellent-91 EX-MS 2E DOM
 2-01 3x 305d 25610 4.4 1126 3.3 840
 9-05 2x 305d 24580 3.9 965 3.0 748
 3-02 2x 305d 23400 4.5 1054 3.1 725

Full sisters to Bojengl

Autumn-Ridge Ot Bodacous-ET EX-93 3E DOM

4-10 2x 365d 36012 4.2 1502 3.2 1174

Autumn-Ridge Otsd Bamboo-ET EX-91 2E GMD DOM

3-09 2x 365d 39760 4.3 1712 3.4 1359

D

5 #1 EMBRYOS

Direct Transfer
 Sire: **Val-Bisson Doorman-ET**

Val-Bisson Doorman-ET

107281711C 99%RHA-I VG-87-CAN ST'16*TV *TL *TY
 PTA -25M +42F +25P 99R 8/16
 PTA +3.54T +2.46UDC +2.23FLC GTPI +2354G

Misty Springs Lavanguard Sue

9979603C

Comestar Outside-ET

6026421 Excellent-95 GM 1/08 *TV *TL
 PTA -141M +14F -17P 99R 8/16
 PTA +.36T +.00UDC +1.00FLC GTPI +1680G

Miss Autumn Rud Boomer-ET

124027262 Very Good-87 VG-MS DOM *TV
 3-07 2x 365d 29990 4.8 1431 3.4 1015
 2-04 2x 365d 23720 4.9 1171 3.7 874

3rd Dam

O-C-E-C Bellwood Baby-ET VG-85 GMD DOM

2-05 3x 314d 30720 4.3 1324 3.0 935

4th Dam

Spring-Born Cleitus Bess VG-86 VVVV GMD DOM

2-02 2x 365d 31260 4.9 1526 3.2 1012

5th Dam

Spring-Born Ned Bernadette VG-87 GMD DOM

3-04 2x 365d 37160 4.5 1654 3.2 1177

Life: 1854d 112590 4.4 4989 3.4 3810

6th Dam

Star-Bright-Vu Chairman Betty VG-88 VEVV

3-08 3x 365d 29580 3.0 895 3.0 894

Life: 2272d 138280 3.4 4688 3.0 4110

7th Dam

James-Hill Elevation Betsy EX-94 3E GMD DOM

8-02 3x 365d 47070 4.4 2055 2.6 1209

Life: 2607d 195538 3.6 6965 2.7 2261

• 2nd 4-Yr-Old Cow Central National 1981

8th Dam

James-Hill Paclamar Betty-Twin VG-86

4-00 2x 305d 15440 3.4 528

9th Dam

Morsons Astronaut Bess EX-90 EEEV

Life: 2456d 139600 3.6 4984

10th Dam

Bessie Piebe Carnation Bess VG-88

Life: 1850d 103210 3.6 3727

11th Dam

Bessie Raven Piebe VG-86

7-06 2x 305d 14110 3.4 474



CARPSDALE-J GLD ANNIVERSARY EX-91 EX-MS 2E
DAM OF LOT E

E

SIX #1 EMBRYOS

Direct Transfer

- Free Shipping

SCOTT RACHA, O-C-E-C EMBRYOS
HOLLAND PATENT, NY 13354
315-865-5826

De-Su Bkm Mccutchen 1174-ET

69990138 99%RHA-I *TV *TL *TY *TD
PTA +961M +55F +34P 99R 8/16
PTA +2.8PL 2.84SCS -.3DPR 3.4%DCE
PTA +3.23T +2.91UDC +2.72FLC 99R 8/16
GTPI +2468G

Carpsdale-J Gld Anniversary

137020265 Excellent-91 EX-MS 2E
4-08 2x 294d 30570 4.7 1426 3.1 938
6-06 2x 305d 30060 5.0 1489 3.0 905
3-02 2x 365d 29550 4.1 1216 3.1 914
5-07 2x 293d 26940 4.1 1118 3.1 824
2-01 2x 324d 25550 4.0 1033 3.0 771
Life: 1676d 142990 4.4 6332 3.1 4419

De-Su 521 Bookem-ET

66636657 99%RHA-I Very Good-88 *TR *TV *TL *TY
PTA +1311M +30F +48P 99R 8/16
PTA +1.59T +1.10UDC +1.14FLC GTPI +2342G

Sully Shottle May-TW

138218285 Excellent-90 DOM
5-04 3x 365d 38970 3.5 1354 3.0 1152

Braedale Goldwyn

10705608C GP-CAN EXTRA'05 GM 12/11 *TV *TL
PTA -358M +13F +1P 99R 8/16
PTA +1.79T +1.51UDC +1.49FLC GTPI +1880G

Carpsdale-J Amy Marie

129896324 Excellent-90
5-06 2x 365d 31110 3.7 1148 2.9 900
8-01 2x 365d 30110 4.3 1298 2.9 866
6-08 2x 365d 27740 3.9 1077 2.8 787
3-04 2x 348d 27040 3.4 923 3.0 815
2-04 2x 295d 15770 3.8 604 2.8 437

4th Dam

Clairbois Cat Johan EX-91 EX-MS 2E
3-08 2x 326d 27460 3.3 896 3.0 825
4-09 2x 300d 26460 3.7 976 3.0 800

Startmore Rudolph-ET

5470579CAN Very Good-85 *TV *TL GM 8/07

Carpsdale-J Skybuc Amy Sue

124538368 Very Good-88 VG-MS
4-01 2x 365d 22630 4.3 969 3.2 723
3-00 2x 357d 22160 3.9 856 3.1 697
2-00 2x 322d 16580 3.9 653 3.0 504



MS DUNDEE PETRA EX-94 EX-MS 2E
DAM OF LOT F

F

SCOTT RACHA, O-C-E-C EMBRYOS
HOLLAND PATENT, NY 13354
315-865-5826

Mr Chassity Gold Chip-ET

140145553 Excellent-92 *TR *TV *TL *TY *TD
PTA -268M +0F -23P 99R 8/16
PTA +1.6PL 2.66SCS -.5DPR 3.4%DCE
PTA +2.47T +2.48UDC +2.24FLC 99R 8/16
GTPI +1876G

MS Dundee Petra

139167171 Excellent-94 EX-MS 2E
4-05 2x 305d 30140 3.4 1033 2.9 882
5-06 2x 305d 25550 3.3 848 3.0 758
3-02 2x 305d 24690 3.3 816 2.8 701
2-03 2x 305d 20650 3.7 762 2.9 591
Life: 1631d 127610 3.5 4444 3.0 3778

SIX #1 EMBRYOS

Direct Transfer

- Free Shipping

Braedale Goldwyn

10705608C GP-CAN EXTRA'05 GM 12/11 *TV *TL
PTA -358M +13F +1P 99R 8/16
PTA +1.79T +1.51UDC +1.49FLC GTPI +1880G

Regancrest S Chassity-ET

62496899 Excellent-92 EEEVE DOM *TL *TY
3-10 2x 365d 42280 4.3 1798 2.5 1070
Life: 1071d 105520 4.2 4383 2.8 2959

Regancrest Dundee-ET

127640114 Excellent-95 *TV *TL *TY
PTA -659M -36F -17P 99R 8/16
PTA +1.17T +1.40UDC +.13FLC GTPI +1384G

MS Zach Lorenzo Pat

135031539 Excellent-90 2E
5-08 2x 365d 28890 3.9 1131 2.8 802
4-02 2x 365d 26760 3.9 1046 2.9 770
2-11 2x 365d 24370 3.9 953 2.9 718

Maternal sister to Lot F

Rach-Len Shottle Pebbles EX-90

3rd Dam

MS Zach M Chesapeake Patti EX-92 EEEEE 3E

6-04 2x 327d 26210 4.0 1040 2.9 753
Life: 3293d 226100 3.9 8891 3.0 6685

4th Dam

Zach-M Supreme Pansy EX-90 EX-MS

5-01 2x 365d 26350 4.5 1176 3.7 982
Life: 135890 4.4 5976 3.7 4992

5th Dam

Quietcove-Peg Pam-ET EX-93 EX-MS 3E

4-02 2x 326d 28000 3.5 974 3.3 910
Life: 190290 3.5 6718 3.2 6027

6th Dam

Eric-Dew Conductor Peggy EX-94 4E GMD DOM

9-03 2x 365d 37130 4.1 1517 3.2 1173
Life: 185600 4.1 7557 3.2 4204

7th Dam

Eric-Dew Archie Bell EX-90 GMD DOM

6-10 2x 352d 33310 3.5 1165
Life: 130800 3.5 4544



Southern States Christiansburg Service
885 Roanoke Street
Christiansburg, VA 24073
540-382-2984

Loans for
Farms, Homes & Land!



Farms & Estates • Homes • Land • Stables • Equipment



FARM CREDIT

800.919.FARM | FarmCreditofVirginias.com



NMLS#456965



BoVantage®



A NATURAL FEED ADDITIVE TO HELP YOUR HERD SUCCEED

BoVantage® feed fortifier is a synergistic blend of natural ingredients, organic acids, vitamins and complexed trace minerals. Field testing and use of BoVantage® Technology in lactating dairy cows has shown a number of beneficial effects such as enhanced milk production, improved milk components, and greater resistance to stress. BoVantage® for dairy, the more milk advantage.

For more information on BoVantage and our other great products, contact your local feed representative.

**Hagerstown, MD Mill
800-845-5413**

**Customer Service
866-647-1212**

WHEN DAIRY IS YOUR BUSINESS.

Kent Nutrition Group, Inc. | 1.866.647.1212 | kentfeeds.com

Nasco FARM & RANCH

World's Largest Selection of Livestock Supplies!

1.800.558.9595
eNasco.com/farmandranch

Photo Courtesy of World Dairy Expo and VIVID MEDIA 2010

Livestock Mortality Insurance

PAULA BOVRE LIVESTOCK INSURANCE

W4226 Hwy 23 East, Fond du Lac, WI 54937 PH: 920.923.6991 CELL: 920.960.0655 email: grnorth81@gmail.com



APPLICATION FOR INSURANCE WITH AMERICAN LIVESTOCK INSURANCE COMPANY

REMOVE AND HAND TO COMPANY REPRESENTATIVE

I/We _____

Of _____

Address State Zip Code Telephone

Hereby apply for insurance against loss by death resulting from disease or accidental injuries for the term of _____ on the following described animal or animals.

Lot	Name of Animal	Registration and/or Tattoo Number	Breed	Birthdate	Purchase Price	Amount of Insurance	Rate	Premium
			Sex		Purchase Date			

Dairy Cattle Rates

CALVES	Annual	1 Month	3 Months	6 Months	COWS	Annual	1 Month	3 Months	6 Months
2 weeks – 7 weeks of age	12.0%	4.8%	7.2%	8.0%	Up to 5 years of age	8.0%	3.2%	4.8%	5.3%
7 weeks – 3 months of age	10.0%	4.0%	6.0%	6.7%	6 years	9.0%	3.6%	5.4%	6.0%
BULLS					7 years	10.0%	4.0%	6.0%	6.7%
Up to 6 years of age	6.0%	2.4%	3.6%	4.0%	Minimum Policy Premium is \$150.00				
7 years	7.0%	2.8%	4.2%	4.7%	Term must be a minimum of 60 days to cover any loss resulting from calving.				
8 years	8.0%	3.2%	4.8%	5.3%					

This is not a Binder until accepted by Insurance Company Representative



HOLSTEIN ASSOCIATION TERMS AND CONDITIONS FOR PUBLIC SALES

EFFECTIVE MARCH 2, 1996 - Amended October 1, 1997, June 28, 2000, June 23, 2002, and March 26, 2010

TERMS: The terms of the sale are cash unless arrangements are made prior to the sale or are printed in the sale catalog. Only when the above conditions are met will the buyer be entitled to the warranties listed below. In no case will animals be released unless settlement is made with the clerk of the sale.

RESPONSIBILITY: The seller, buyer, and manager of this sale are obligated to comply with the provisions of these terms and conditions.

EXPORT SALES: Buyer assumes all responsibility for health tests required by the importing country.

BIDS: The highest bidder is the buyer. Bidding parties or their agents are responsible for all bids placed. Every animal or lot presented for bidding is pledged to absolute sale. In case of dispute, the animal or lot will again be put up for advance bids, and if there is no advance bid, the animal or lot will be sold to the person the auctioneer accepted the last bid from. In case two or more claim the bid, the auctioneer will indicate the party whose bid he recognized. Other claimants will be given an opportunity to increase the bid and bidding will be restricted to the two or more claimants.

BY-BIDDING: Bidding directly or indirectly by the sole owner of any animal or lot is prohibited unless the intention to bid is disclosed specific to each animal in the catalog and announced when the animal enters the ring. Bidding by any member of a partnership, syndicate, or other entity having an ownership interest in an animal or lot is permitted.

TRANSFER OF OWNERSHIP: For all Registered HolsteinsSM, the transfer of ownership to the buyer will be recorded on the records of Holstein Association USA and a certificate of registration showing that transfer of ownership will be provided to the buyer free of charge. For embryos, the transfer of ownership to the buyer will be recorded on the records of Holstein Association USA free of charge to the buyer.

RISK: All animals located at sale site are at the purchaser's risk as soon as struck off, but will be cared for free of charge for a maximum of 24 hours following the end of the sale.

WARRANTIES:

- 1) Each consignor warrants clear title to the animal or lot, and the right to sell same.
- 2) To the best of the seller's knowledge, each animal is sound and healthy in every respect and embryos have been recovered, processed, frozen, transferred and graded in keeping with IETS recommendations unless otherwise noted in the catalog or announced from the auction stand. Every precaution will be taken to represent the physical condition of each lot exactly as is known. Examination of all purchases should be made immediately after the purchase and before the close of the sale, and if found not to be as represented, complaint must be reported to the sale management before the close of the sale. In the event no complaint is filed, it is understood that the buyer assumes full ownership in the case of animals at sale site together with all risks, after which no representations of the seller can be challenged through the sale management. Heifers that never calved are in no way guaranteed as to the condition of their udders following calving.

3) Breeding Warranty

The seller guarantees all animals to be breeders, but not beyond the purchase price, with the following understanding:

- a. Males - Should any bull after reaching the age of fourteen months fail to prove a breeder after being used for two months on cows or heifers known to be breeders, the matter shall be reported in writing to the seller within three months of the sale date. The report must include the animal's examination record, a written statement of treatment, and a statement of the animals' inability to breed,

by a licensed veterinarian. The seller has the option to refund the purchase price or make other settlement that is satisfactory to the buyer. In either case the rights of ownership of the animal return to the seller. The seller makes no guarantees with respect to the ability to freeze semen.

- b. Females - All females are guaranteed to be breeders with the exception of:
 1. Cows over 7 years of age when sold;
 2. Cows and/or heifers carrying a pregnancy that is the result of an embryo transfer.

Report of a non-breeder must occur in writing within 3 months of the date of sale or before the animal reaches 21 months of age and must be submitted to the seller. The report must include the animal's examination record, a written statement of treatment, and a statement of the animals' inability to breed, by a licensed veterinarian. The seller has the option to refund the purchase price or make other settlement that is satisfactory to the buyer. In either case the rights of ownership of the animal return to the seller.

Females bred when sold and pronounced in calf are presumed to be pregnant but pregnancy is not guaranteed unless so announced. The seller makes no warranty that pregnant cows will deliver calves or that they will carry calves full term.

- c. If, after the sale, embryos or oocytes are recovered from a female or an attempt is made to superovulate her, this negates the breeding warranty unless there is a separate written agreement between buyer and seller.

SHIPPING: Assistance will be given in arranging shipping of the animals after the sale. All costs, risks and responsibility will be borne by the purchaser.

PEDIGREE INFORMATION: All production, classification, type and production summaries are current. Only information recorded on Holstein Association USA pedigrees is used. Any production or classification records supplied by the seller or consignor will be properly identified as provided by owner. Records in progress are identified as such.

GENOMIC INFORMATION: If genomic information on the animal or embryo is available, it must be dated and disclosed at or before the time of sale.

EMBRYO TRANSFER: All registered animals that have resulted from embryo transfer are identified with one of the following suffixes in the name: ET, ETS (from split embryo), or ETN (from nuclear transfer). If unregistered, the appropriate technology will be identified. Donor dams are identified.

HEALTH WARRANTY: The seller will provide an official health certificate to the buyer for each animal showing the results of all health tests made in preparation for this sale as required by the state where the cattle reside. Other health tests completed for this sale will be disclosed.

ERRORS: The material in this catalog has been carefully edited. If any errors or omissions are discovered, they will be announced. Such announcements take precedence over that printed in this catalog.

ACCIDENT: The sale management, the consignors, and the owner of the grounds will not be responsible in any case for the condition of the grounds or the behavior of the animals and disclaim any liability in the event of personal accident or property loss.

LIMITATIONS OF WARRANTIES: Warranties contained herein, unless terminated earlier, will cease upon the resale of an animal.

Index

Carpenter, John, Enosburg Falls, VT	Lot 30
Carpsdale Farms LTD, Enosburg Falls, VT	Lot 29
Clear-Echo Farm LLC, Schuylerville, NY	Lot 15, 31
Comyn & Crouse, Madison, VA	Lot 26A & 26B
Duckett & Hardesty, Berryville, VA	Lot 6
Eastern Kentucky University, Richmond, KY	Lot 43, 44
Emerson & Raggi, Middletown, DE	Lot 19
Emerson II, Robert, Middletown, DE	Lot 7
Endeavor Genomic Holsteins LLC, Munster, IN	Lot 2, 16, 17, 18
Entourage-LC, Gaithersburg, MD	Lot 3, 20, 21, 22
Fairmont Farm, Inc, East Montpelier, VT	Lot 47, 48
Gilbert, William, Keswick, VA	Lot 39
Glen-Toctin Farm, Jefferson, MD	Lot 14
Goodhue, Cole, Fairfield, VT	Lot 53
Hardy, Nicole, Perkasio, PA	Lot 45
Hostertter, Brent & Lawanda, Annville, PA	Lot 34
Hull, Matthew & Jennifer, Enosburg Falls, VT	Lot 11, 27
Iager Brothers, Boonsboro, MD	Lot 10
Janney, James & Lavaun, Leitchfield, KY	Lot 40, 41, 42
Johnson, Andrea, Dickerson, MD	Lot 52
Johnson, Robert, Dickerson, MD	Lot 28
Lamb, Jonathan & Alicia, Oakfield, NY	Lot 5, 8
Lease, Derek, Union Bridge, MD	Lot 36
Leonard, Cole, Spottswood, VA	Lot 46
Oakfield Corners Dairy, Oakfield, NY	Lot 12
Racha, Scott, Holland Patent, NY	Lot E, F
Riggs & Stiles & Entourage-LC, Berryville, VA	Lot 37, 38, 49, 50, 51
Russell, Bree & Mallory, Knob Lick, KY	Lot 25
Sensenig, Robert, Quarryville, PA	Lot 13
Silent Syndicate, Madison, VA	Lot 32
Smith, Kraig, Catlett, VA	Lot 54
Snyder, Julianne, Christiansburg, VA	Lot 9
St Jacobs ABC, Inc, De Fforest, WI	Lot 4
Sunny-Hillvue Farm, Vale, NC	Lot 35
The Wright Farm, Enosburg Falls, VT	Lot 23, 24
Thomas, Schaapman & Parks	Lot A, B
Tompkins & Branch, Ennice, NC	Lot 33
Triple-T, Heath & Entourage	Lot 1
Van Erk Dairy, LLC, Haviland, OH	Lot C, D

CATALOG DESIGN:

De-Lite Graphics

New Bloomfield, PA

717-979-5272

delitegraphics@centurylink.net