

CENTRAL ALBERTA HOLSTEIN CLUB



2016

# Embryo Tag Sale

Thursday Oct. 27 8:00am- Saturday Oct. 29 4:00PM

**SALE MANAGED BY: CENTRAL ALBERTA HOLSTEIN CLUB**

**Barn Boss:**

Markus & Amanda Hehli  
Mosnang Holsteins: (403) 783-0442

Rob Luymes: (403) 505-2763  
Willem van der Linde: (403) 302-1527  
Jan Van de Brake: (587) 377-3677

**Auctioneer:**

Andrew Wildeboer: (403) 348-9358

**Pedigrees:**

Dr. David Chalack  
RockyMountain Holsteins: (403) 585-2455

**Ringmen:**

Tom DeGroot: (604) 819-2879  
Lee Simanton: (403) 704-6692  
Lee Morey: (780) 206-5164  
Jacob Beyer: (403) 394-5315

**TERMS & CONDITIONS:**

Prices will be listed at the beginning of the sale, October 27th at 8 am.

Embryos will be for sale at the listed price. However if there are multiple interested parties in the first half day (Thursday Oct. 27 until noon) there will be a bid off strictly between the interested parties. After 12 noon on Thurs it will be a first come first serve basis.

The buyer will be responsible for transportation costs unless other arrangements have been made with the seller.

To buy or for more information come by the sale string or contact any member of the sales staff.



©Ella Wright

Alley Altaarmstead Collect VG-85  
Maternal Sister to Dam



LOT NO. 1E

Issued: 04 Oct 2016

**3 EMBRYOS**

Consigned by: ALLEY HOLSTEINS

4th-5th Maternal Dam  
REDTOWER LINDY CORONA GP-84-3YR-CAN  
RHEIN RON GLORY COLLEEN VG-85-5YR-CAN

CAN-PA Aug\*16 PA LPI 2520  
KG M 922 F 29 %F-0.07  
SCS 2.87 P 28 %P-0.01  
CAN-PA Aug\*16 CONF 11  
MS 10 F&L 8 DS 8 RP 2

**POL BUTTE MC BEEMER PB**

HOCANM7525863 ET  
CAN-GPA Aug\*16 80%Rel GPA LPI 2852/76%  
KG M 1116/74% F 47/75% %F 0.04 PRO\$  
SCS 2.85 P 35/69% %P-0.02 1448  
CAN-GPA Aug\*16 78%Rel CONF 17/99%  
MS 16 F&L 14 DS 14 RP 0

**ALLEY SHOTTLE COLANE PB**

HOCANF11099236 B:05 Dec 2010  
VG-85-3YR-CAN  
MS:87 (FA:7 RAH:8 RAW:7) F&L:83 DS:86 RP:88  
CAN-GEV Aug\*16 79%Rel GLPI 2188/76%  
KG M 727/76% F 10/44% %F-0.17 PRO\$  
SCS 2.88 P 21/72% %P-0.02 818  
CAN-GEV Aug\*16 76%Rel CONF 5/70%  
MS 3 F&L 1 DS 2 RP 3  
02-01 305 11167 392 3.5 357 3.2  
313 11453 402 3.5 367 3.2  
BCA 276 263 279  
03-01 279 11664 407 3.5 379 3.2  
BCA 252 239 256  
04-00 126 6769 260 3.8 204 3.0  
BCA 132 138 126  
3 LACT: 29886 1069 3.6 950 3.2 KG  
Avg BCA: M220(-26) F213(-35) P220(-28)  
Progeny Data: 0EX 1VG 0GP 0G 0F  
1 DAUS ME AVG: 15032 603 4.0 460 3.1  
AVG BCA: M284 F309 P278

**DE-SU BKM MCCUTCHEN 1174-ET PB**

HOUSAM69990138 \*CVF\*BYF\*BLF\*DPF ET  
EX-92-3YR-USA ST'15  
CAN-GEV Aug\*16 98%Rel GLPI 3065/93%  
KG M 986 F 61 %F 0.22 P 41 %P 0.08  
CAN-GEV Aug\*16 97%Rel CONF 15

**BUTZ-BUTLER GOLD BANNER-ET PB**

HOUSAF140145517 ET B:04 Aug 2009  
VG-88-2YR-CAN 1\*(0/7)  
02-06 305 13010 544 4.2 399 3.1  
365 15158 639 4.2 476 3.1  
BCA 306 346 298  
1 LACT: 22755 1001 4.4 773 3.4 KG

**PICSTON SHOTTLE-ET PB**

HOGBRM598172 \*CVF\*BYF\*BLF\*MFF ET  
EX-96-7YR-GBR GM'10 EXTRA'09  
CAN-GEV Aug\*16 99%Rel GLPI 2427/99%  
KG M 879 F 33 %F 0.01 P 24 %P-0.04  
CAN-GEV Aug\*16 99%Rel CONF 6

**ALLEY FORTUNE COLLECT PB**

HOCANF9699911 B:07 Dec 2007  
VG-88-4YR-CAN 1\*(6/0)  
02-00 292 9668 382 4.0 353 3.7  
BCA 239 256 271  
02-11 305 10689 436 4.1 396 3.7  
BCA 231 255 269  
04-05 140 5750 219 3.8 194 3.4  
3 LACT: 26639 1062 4.0 967 3.6 KG  
Avg BCA: M235(-4) F256(26) P270(32)  
Progeny Data: 0EX 2VG 0GP 0G 0F  
2 DAUS ME AVG: 12597 435 3.5 400 3.2  
AVG BCA: M238 F223 P242

**DE-SU 521 BOOKEM-ET PB**

HOUSAM66636657 \*CVF\*RDF\*BYF\*BLF\*DPF ET  
**SULLY SHOTTLE MAY-TW PB**  
HOUSAF138218285 MB B:27 Mar 2007  
EX-90-6YR-USA DOM 6\*(0/31)

**BRAEDALE GOLDWYN PB**

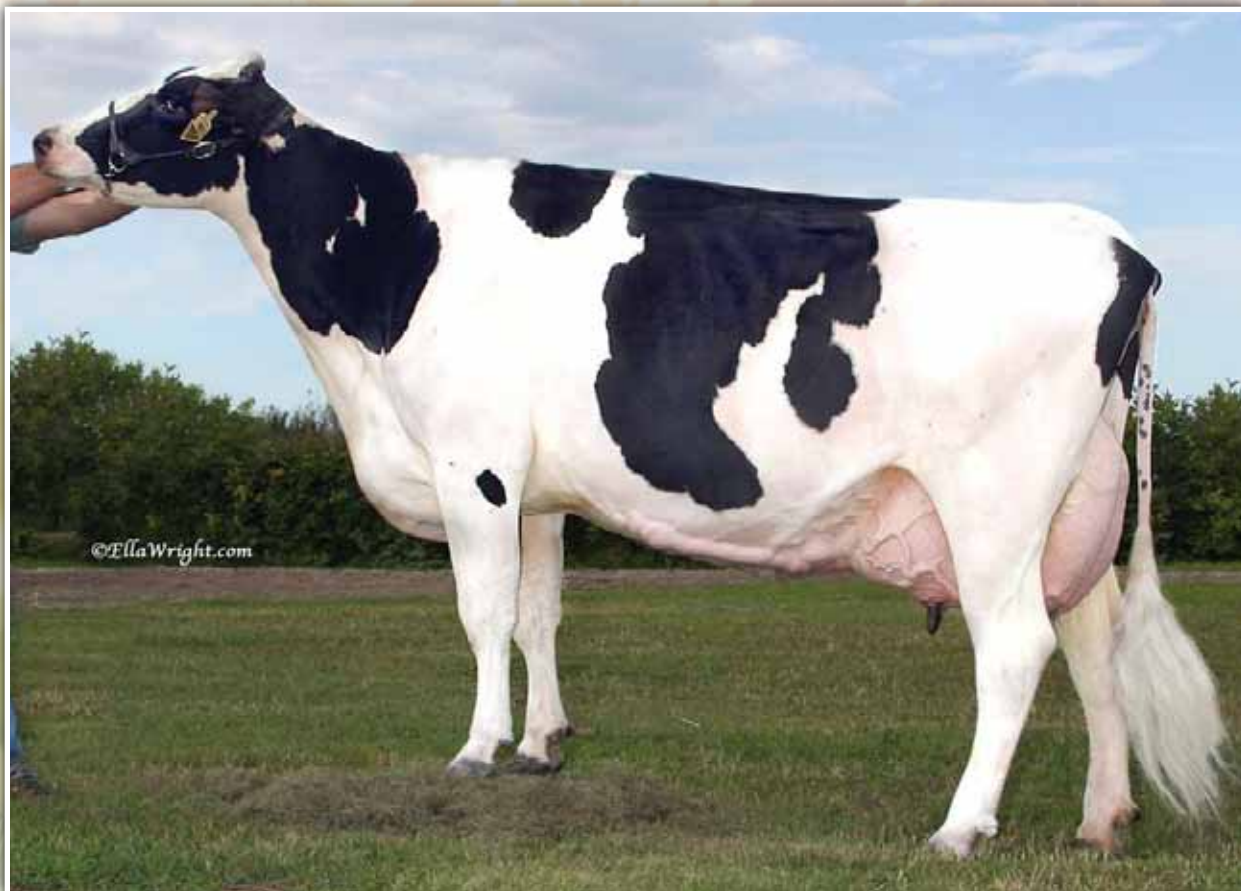
HOCANM10705608 \*CVF\*BYF\*BLF  
GP-84-8YR-CAN GM'12 EXTRA'05  
**REGANCREST BRASILIA-ET PB**  
HOUSAF62496866 ET B:02 Dec 2005  
EX-92-2E-USA DOM 11\*(6/52)

**CAROL PRELUDE MTOTO ET PB**

HOITAMVT1962A \*CVF\*BLF ET  
EX-91-8YR-ITA GM'12  
**CONDON AERO SHARON PB**  
HOCANF5373153 B:20 Jan 1991  
EX-91-6YR-GBR

**TO-MAR D-FORTUNE-ET PB**

HOUSAM129922003 \*CVF\*RDF\*BLF ET  
EX-91-6YR-USA ST'06  
**REDTOWER ASTRE COLLEEN PB**  
HOCANF7045069 B:22 Nov 1997  
VG-85-8YR-CAN 6\*(30/0)  
02-11 305 12427 405 3.3 396 3.2  
305 12427 405 3.3 396 3.2  
BCA 269 235 269  
9 LACT: 118480 3769 3.2 3747 3.2 KG  
Avg BCA: M240(12) F206(-11) P239(9)  
Progeny Data: 1EX 3VG 2GP 0G 0F  
6 DAUS ME AVG: 13338 443 3.3 410 3.1  
AVG BCA: M252 F227 P248



Kenbert Aaron May EX-92 2E 8\*  
4th Dam



LOT NO. 2E

Issued: 04 Oct 2016

**5 EMBRYOS**

Consigned by: ALLEY HOLSTEINS

4th-7th Maternal Dam

KENBERT AARON MAY EX-92-2E-CAN 8\*  
KENBERT CHARLES MILLY VG-87-3YR-CAN  
KENBERT LINCOLN MITZI GP-81-6YR-CAN 3\*  
KENBERT BREEZE MILLY GP-80-6YR-CAN 2\*

CAN-PA Aug\*16 PA LPI 2519  
KG M 699 F 15 %F-0.12  
SCS 3.05 P 33 %P 0.10  
CAN-PA Aug\*16 CONF 13  
MS 10 F&L 11 DS 12 RP 8

**LIRR DREW DEMPSEY PB**

HOUSAM61083609 \*CVF\*RDF\*BYF\*BLF\*DPF  
VG-86-4YR-USA EXTRA'11  
CAN-GEV Aug\*16 99%Rel GLPI 2898/99%  
KG M-73/17% F 32/56% %F 0.32 PRO\$  
SCS 2.58 P 26/55% %P 0.25 1468  
CAN-GEV Aug\*16 99%Rel CONF 17/99%  
MS 13 F&L 15 DS 12 RP 8  
Progeny Data: 7840 Daus: 86.00% GP+  
113EX 2549VG 4120GP 1037G 21F  
8146 DAUS ME AVG: 11855 470 4.0 384 3.2  
AVG BCA: M224 F241 P232

**KENBERT LARSON MARCIE PB**

HOCANF11288592 \*RDF B:04 Oct 2011  
EX-92-4YR-CAN  
MS:92 (FA:8 RAH:8 RAW:8) F&L:92 DS:94 RP:91  
CAN-GEV Aug\*16 79%Rel GLPI 2139/75%  
KG M 1471/96% F-3/26% %F-0.55 PRO\$  
SCS 3.52 P 40/93% %P-0.09 411  
CAN-GEV Aug\*16 76%Rel CONF 9/93%  
MS 6 F&L 7 DS 12 RP 7  
01-11 289 9386 318 3.4 306 3.3  
BCA 242 219 247  
02-10 305 12601 415 3.3 402 3.2  
322 13119 431 3.3 420 3.2  
BCA 294 258 289  
03-10 146 6898 271 3.9 208 3.0  
BCA 148 155 137  
3 LACT: 29403 1020 3.5 934 3.2 KG  
Avg BCA: M228(-27) F211(-48) P224(-32)

**BRAEDALE GOLDWYN PB**

HOCANM10705608 \*CVF\*BYF\*BLF  
GP-84-8YR-CAN GM'12 EXTRA'05  
CAN-GEV Aug\*16 99%Rel GLPI 2545/99%  
KG M 38 F 37 %F 0.34 P 18 %P 0.15  
CAN-GEV Aug\*16 99%Rel CONF 9  
**KERNDT SNEEZY DERRY DREW PB**  
HOUSAF207658039 B:07 Mar 2002  
VG-88-5YR-USA  
03-08 305 12415 464 3.7 395 3.2  
365 14130 540 3.8 460 3.3  
3 LACT: 51044 2008 3.9 1650 3.2 KG

**WILLSBRO LARSON-ET PB**

HOGBRM642862 \*RDC\*CVF\*BYF\*BLF ET  
CAN-GEV Aug\*16 99%Rel GLPI 2070/97%  
KG M 1454 F 37 %F-0.14 P 53 %P 0.04  
CAN-GEV Aug\*16 98%Rel CONF 4

**KENBERT DUPLEX MARNIE PB**

HOCANF9976956 B:27 Jan 2009  
EX-91-2E-CAN  
02-08 287 9497 400 4.2 315 3.3  
BCA 213 239 222  
03-07 305 11925 438 3.7 401 3.4  
BCA 260 255 267  
04-06 305 14602 502 3.4 479 3.3  
325 15253 528 3.5 502 3.3  
BCA 301 276 307  
05-11 305 14888 592 4.0 466 3.1  
BCA 275 297 277  
4 LACT: 51908 1973 3.8 1697 3.3 KG  
Avg BCA: M262(30) F267(30) P268(35)  
Progeny Data: 1EX OVG OGP OG OF  
1 DAUS ME AVG: 12068 410 3.4 370 3.1  
AVG BCA: M228 F210 P224

**SHOREMAR JAMES PB**

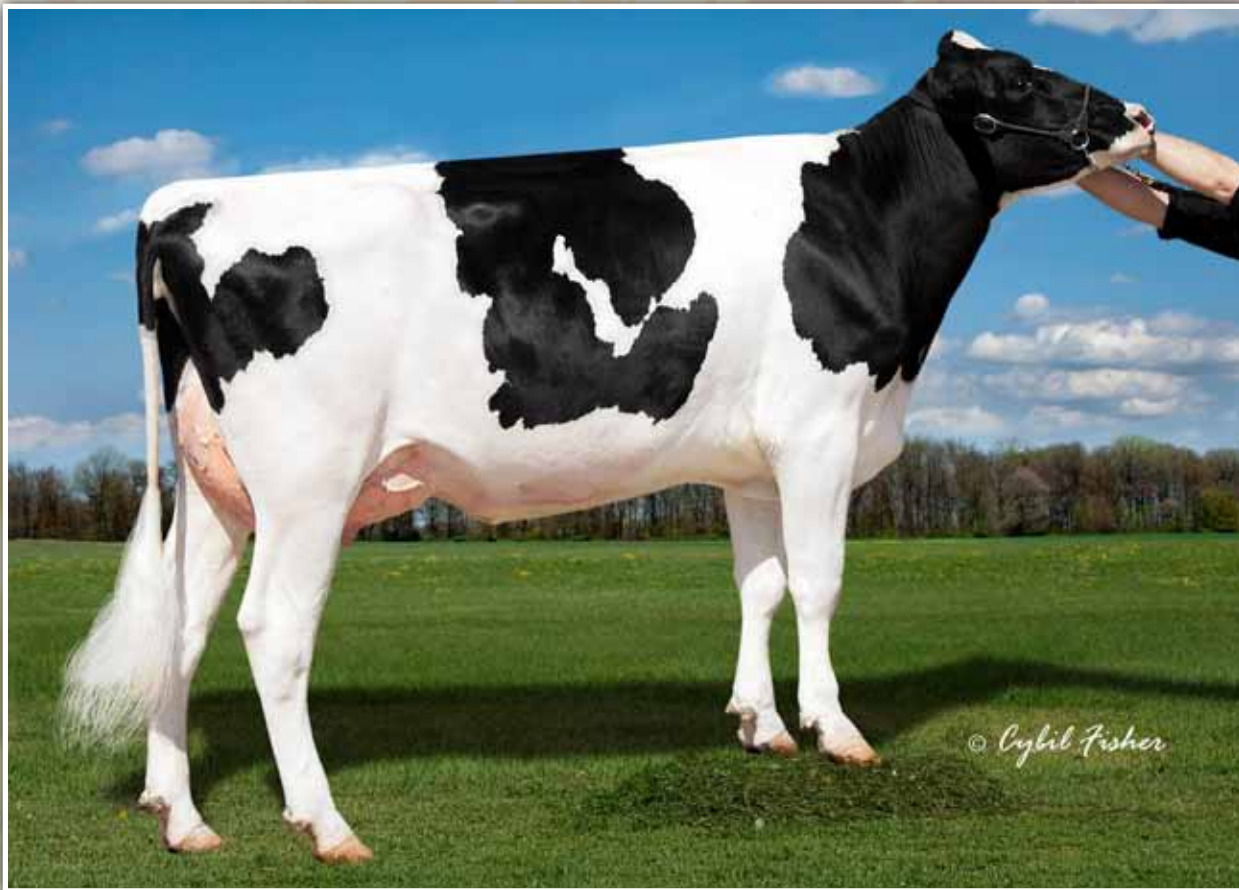
HOCANM5902195 \*CVF\*BLF  
GP-81-2YR-CAN EXTRA'98  
**BRAEDALE BALER TWINE PB**  
HOCANF6860888 \*BLF ETM B:08 Nov 1997  
VG-86-2YR-CAN 33\*(27/138)  
**REGANCREST EMORY DERRY-ET PB**  
HOUSAM2300873 \*CVF\*BLF ET  
EX-94-4YR-USA ST'05 GM  
**KERNDT MATTIE SNEEZY-ET PB**  
HOUSAF207128837 ET B:10 Feb 2000  
EX-90-5YR-USA

**DUDOC MR BURNS PB**

HOCANM100745543 \*RDC\*CVF\*BYF\*BLF ET  
VG-85-5YR-CAN EXTRA'09  
**ACECROFT GOLDWYN LILA Z ET PB**  
HOGBRF11244311 ET B:05 Nov 2006  
VG-87-2YR-GBR

**MESLAND DUPLEX-ET PB**

HOESPM9201683779 \*CVF\*BYF\*BLF ET  
EX-91-4YR-ESP ST'09  
**KENBERT DUNDEE MAIDEN PB**  
HOCANF7885606 ET B:02 Sep 2006  
VG-87-3YR-CAN  
03-05 305 12963 481 3.7 441 3.4  
354 14001 531 3.8 486 3.5  
BCA 273 276 294  
3 LACT: 29551 1043 3.5 1008 3.4 KG  
Avg BCA: M268(35) F267(37) P291(64)  
HM. ALL-WEST 2007  
3RD SR.CALF 2007 AB DAIRY CONGRESS  
Progeny Data: 1EX OVG OGP OG OF  
1 DAUS ME AVG: 13656 500 3.7 438 3.2  
AVG BCA: M258 F256 P265



## Sully Numero Uno Madge VG-85

Dam

Sister to Sully Hart Meridian

© Cybil Fisher



LOT NO. 3E

Issued: 04 Oct 2016

### 5 EMBRYOS

CAN-PA Aug\*16 PA LPI 3252  
 KG M 1565 F 76 %F 0.15  
 SCS 2.83 P 59 %P 0.08  
 CAN-PA Aug\*16 CONF 15  
 MS 15 F&L 11 DS 7 RP 5

### MAPEL WOOD LIGHT MY FIRE PB

HOCANM12111793 ET  
 CAN-GPA Aug\*16 73%Rel GPA LPI 3391/69%  
 KG M 1904/95% F 78/96% %F 0.05 PRO\$  
 SCS 2.81 P 65/96% %P 0.01 2467  
 CAN-GPA Aug\*16 70%Rel CONF 17/99%  
 MS 17 F&L 14 DS 8 RP 3

### SULLY NUMERO UNO MADGE-ET PB

HOUSAF142076132 ET B:19 Sep 2012  
 VG-85-2YR-CAN  
 MS:85 (FA:5 RAH:8 RAW:7) F&L:85 DS:84 RP:86  
 CAN-GEBV Aug\*16 82%Rel GLPI 3113/78%  
 KG M 1226/92% F 74/98% %F 0.25 PRO\$  
 SCS 2.85 P 52/98% %P 0.10 2192  
 CAN-GEBV Aug\*16 79%Rel CONF 12/98%  
 MS 12 F&L 7 DS 5 RP 7  
 02-03 305 11376 470 4.1 380 3.3  
 365 13121 552 4.2 445 3.4  
 BCA 274 307 290  
 1 LACT: 14986 640 4.3 521 3.5 KG  
 Avg BCA: M274(19) F307(59) P290(30)

Consigned by: CEDERWAL FARMS

### ZAHBULLS ALTA1STCLASS-ET PB

HOUSAM71441918 \*CVF\*BYF\*BLF\*DPF ET  
 CAN-GPA Aug\*16 79%Rel GPA LPI 3161/75%  
 KG M 815 F 79 %F 0.45 P 39 %P 0.11  
 CAN-GPA Aug\*16 76%Rel CONF 14

### SNOWBIZ MCCUTCHEN LOTTIE PB

HOCANF108502625 ET B:13 Jul 2013  
 VG-87-2YR-CAN  
 02-02 305 10854 416 3.8 345 3.2  
 329 11664 444 3.8 373 3.2  
 BCA 263 268 261  
 1 LACT: 11664 444 3.8 373 3.2 KG

### AMIGHETTI NUMERO UNO ET PB

HOITAM17990915143 \*CVF\*BYF\*BLF\*DPF ET  
 EX-90-3YR-HUN ST'15  
 CAN-GEBV Aug\*16 99%Rel GLPI 3013/97%  
 KG M-53 F 73 %F 0.70 P 18 %P 0.17  
 CAN-GEBV Aug\*16 98%Rel CONF 13

### SULLY PLANET MANITOBA-ET PB

HOUSAF139853931 ET B:16 Feb 2009  
 VG-85-6YR-CAN DOM 10\*(0/50)  
 02-03 305 13200 511 3.9 431 3.3  
 04-01 305 17599 625 3.6 554 3.1  
 365 19808 710 3.6 636 3.2  
 BCA 360 347 360  
 06-01 234 13231 420 3.2 396 3.0  
 3 LACT: 58051 2154 3.7 1919 3.3 KG  
 Avg BCA: M360(85) F347(57) P360(87)  
 1 Superior Lactations  
 Progeny Data: 1EX 9VG 9GP 0G 0F  
 21 DAUS ME AVG: 16408 634 3.9 519 3.2  
 AVG BCA: M310 F325 P314

4th-7th Maternal Dam

MS SULLY OMAN MUETZE-ET EX-90-4YR-USA  
 JOHNNAN MARSHALL MINT VG-85-2YR-USA  
 POLY-KOW DURHAM MINCY-ET VG-88-6YR-USA  
 POLY-KOW RUDOLPH MINK-ET VG-86-5YR-USA

### AMIGHETTI NUMERO UNO ET PB

HOITAM17990915143 \*CVF\*BYF\*BLF\*DPF ET  
 EX-90-3YR-HUN ST'15  
 ZAHBULLS DORCY GLAMOUR-ET PB  
 HOUSAF69551522 \*BYF ET B:12 Oct 2010  
 GP-83-2YR-USA

### DE-SU BKM MCCUTCHEN 1174-ET PB

HOUSAM69990138 \*CVF\*BYF\*BLF\*DPF ET  
 EX-92-3YR-USA ST'15  
 FREUREHAVEN FGS LUCY PB  
 HOCANF11398471 \*BYF ET B:01 Aug 2011  
 VG-86-2YR-CAN 2\*(0/11)

### LONG-LANGS OMAN OMAN-ET PB

HOUSAM135746776 \*CVF\*BYF\*BLF\*DPF ET  
 VG-85-4YR-USA EXTRA'12 GM'10  
 AMIGHETTI SHOTTLE AVE PB  
 HOITAF17990346074 ET B:01 Mar 2006  
 VG-89-ITA

### ENSENADA TABOO PLANET-ET PB

HOUSAM60597003 \*CVF\*RDF\*BYF\*BLF\*DPF ET  
 EX-90-4YR-USA EXTRA'12 GM'11

### SULLY SHOTTLE MAY-TW PB

HOUSAF138218285 MB B:27 Mar 2007  
 EX-90-6YR-USA DOM 6\*(0/31)  
 06-07 305 15753 618 3.9 541 3.4  
 365 18126 705 3.9 625 3.4  
 3 LACT: 55570 1969 3.5 1830 3.3 KG  
 Progeny Data: OEX 3VG 0GP 0G 0F  
 4 DAUS ME AVG: 16885 646 3.8 538 3.2  
 AVG BCA: M319 F331 P325



Neuday Goldwyn Erin EX-94 2E  
Dam

5 embryos from Future Flush x Mutually Agreed Sire



LOT NO. 4E

Issued: 04 Oct 2016

**NEUDAY GOLDWYN ERIN PB**

HOCANF7527253 B:23 Sep 2006  
\*RDF\*BLF\*DPF  
EX-94-2E-CAN  
MS:95 (FA:9 RAH:9 RAW:6) F&L:92 DS:95 RP:95  
CAN-GEV Aug\*16 82%Rel GLPI 2151/79%  
KG M-277/21% F 0/30% %F 0.10 PRO\$  
SCS 3.09 P-4/23% %P 0.05 315  
CAN-GEV Aug\*16 80%Rel CONF 7/84%  
MS 5 F&L 6 DS 6 RP 4  
Progeny Data: OEX 2VG 2GP 0G 0F  
4 DAUS ME AVG: 11115 435 3.9 346 3.1  
AVG BCA: M210 F223 P209

**BRAEDAILE GOLDWYN PB**

HOCANM10705608 \*CVF\*BYF\*BLF  
GP-84-8YR-CAN GM'12 EXTRA'05  
F&L:83 DS:84 RP:87  
CAN-GEV Aug\*16 99%Rel GLPI 2545/99%  
KG M 38/22% F 37/63% %F 0.34 PRO\$  
SCS 2.61 P 18/41% %P 0.15 1096  
CAN-GEV Aug\*16 99%Rel CONF 9/94%  
MS 8 F&L 9 DS 4 RP 1  
Progeny Data: 35736 Daus: 86.00% GP+  
2958EX 13629VG 14358GP 4513G 278F  
37333 DAUS ME AVG: 11474 455 4.0 369 3.2  
AVG BCA: M217 F233 P223

**NEUDAY LHEROS EMILY PB**

HOCANF8835359 B:02 Jun 2003  
EX-92-3E-CAN 5\*(9/17)  
MS:92 (FA:7 RAH:9 RAW:8) F&L:90 DS:95 RP:92  
CAN-EBV Aug\*16 77%Rel LPI 1996/61%  
KG M-233/23% F-2/28% %F 0.06 PRO\$  
SCS 3.34 P-7/19% %P 0.01 -29  
CAN-EBV Aug\*16 66%Rel CONF 9/93%  
MS 3 F&L 5 DS 14 RP 10  
02-03 305 9126 381 4.2 297 3.3  
BCA 223 249 227  
03-03 305 8990 371 4.1 304 3.4  
BCA 196 216 204  
04-04 305 10728 428 4.0 361 3.4  
BCA 208 222 220  
06-03 305 12318 521 4.2 393 3.2  
365 14221 605 4.3 459 3.2  
BCA 235 266 237  
5 LACT: 58299 2410 4.1 1963 3.4 KG  
Avg BCA: M206(14) F223(21) P212(18)  
Progeny Data: 1EX 7VG 4GP 0G 0F  
12 DAUS ME AVG: 12597 455 3.6 392 3.1  
AVG BCA: M238 F233 P237

02-07 305 7265 314 4.3 238 3.3  
BCA 173 201 179  
03-09 305 8395 335 4.0 287 3.4  
BCA 181 195 191  
04-11 305 8521 343 4.0 301 3.5  
BCA 173 185 191  
06-01 305 12667 525 4.1 410 3.2  
365 14540 610 4.2 476 3.3  
BCA 230 257 238  
4 LACT: 47100 2006 4.3 1614 3.4 KG  
Avg BCA: M189(-1) F210(15) P200(5)  
2ND MATURE COW 2013 SASKATOON EXPO

**SHOREMAR JAMES PB**

HOCANM5902195 \*CVF\*BLF  
GP-81-2YR-CAN EXTRA'98  
CAN-GEV Aug\*16 99%Rel GLPI 1478/99%  
KG M-873 F-6 %F 0.26 P-3 %P 0.23  
CAN-GEV Aug\*16 99%Rel CONF -2

**BRAEDAILE BALER TWINE PB**

HOCANF6860888 \*BLF ETM B:08 Nov 1997  
VG-86-2YR-CAN 33\*(27/138)  
02-01 305 12096 591 4.9 402 3.3  
365 14019 690 4.9 477 3.4  
BCA 299 397 314  
1 LACT: 27051 1359 5.0 1005 3.7 KG

**COMESTAR LHEROS PB**

HOCANM6663935 \*CVF\*RDF\*BYF\*BLF ET  
EX-97-11YR-CAN EXTRA'02  
CAN-GEV Aug\*16 99%Rel GLPI 1752/99%  
KG M-509 F-25 %F-0.07 P-12 %P 0.04  
CAN-GEV Aug\*16 99%Rel CONF 5

**NEUDAY GIBSON EMMY PB**

HOCANF8323112 B:03 Feb 2001  
VG-85-3YR-CAN  
02-03 305 8123 318 3.9 292 3.6  
351 9185 365 4.0 335 3.6  
BCA 205 216 232  
03-06 305 8474 353 4.2 296 3.5  
BCA 186 206 199  
2 LACT: 18012 734 4.1 645 3.6 KG  
Avg BCA: M196(-25) F211(1) P216(-13)  
Progeny Data: 1EX 0VG 0GP 0G 0F  
1 DAUS ME AVG: 11062 447 4.0 359 3.2  
AVG BCA: M209 F229 P217

Consigned By:

CHRIS-ADIE HOLSTEINS LTD  
Tel: 306-762-2241 Fax: 306-762-2241

4th-7th Maternal Dam

NEUDAY ASTRE EMILY VG-87-5YR-CAN 3\*  
NEUDAY A J EMILY GP-83-2YR-CAN  
LAROSE EMILY-RED EX-2E-CAN  
PINEBUSH P C GWENDOLYN GP-80-5YR-CAN

**MARK CJ GILBROOK GRAND ET PB**

HOCANM393207 \*BLF\*MFF ET  
EX-86-5YR-CAN EXTRA'93  
**STELBRO JENINE AEROSTAR PB**  
HOCANF5337384 \*BLF B:23 Feb 1991  
VG-85-4YR-CAN

**MAUGHLIN STORM PB**

HOCANM5457798 \*CVF\*BRC\*BLF ET  
EX-CAN EXTRA'96

**BRAEDAILE GYPSY GRAND PB**

HOCANF5912235 B:20 Sep 1993  
VG-88-5YR-CAN 37\*(0/185)

**SHOREMAR MASON PB**

HOCANM5279989 \*CVF\*BLF ET  
EX-CAN GM'12 EXTRA'95

**COMESTAR LAURA BLACK PB**

HOCANF5319783 ET B:22 Dec 1990  
VG-87-3YR-CAN 24\*(5/115)

**SILKY GIBSON PB**

HOCANM6215479 \*BYC\*CVF\*BLF ET  
EX-96-12YR-CAN ST'99

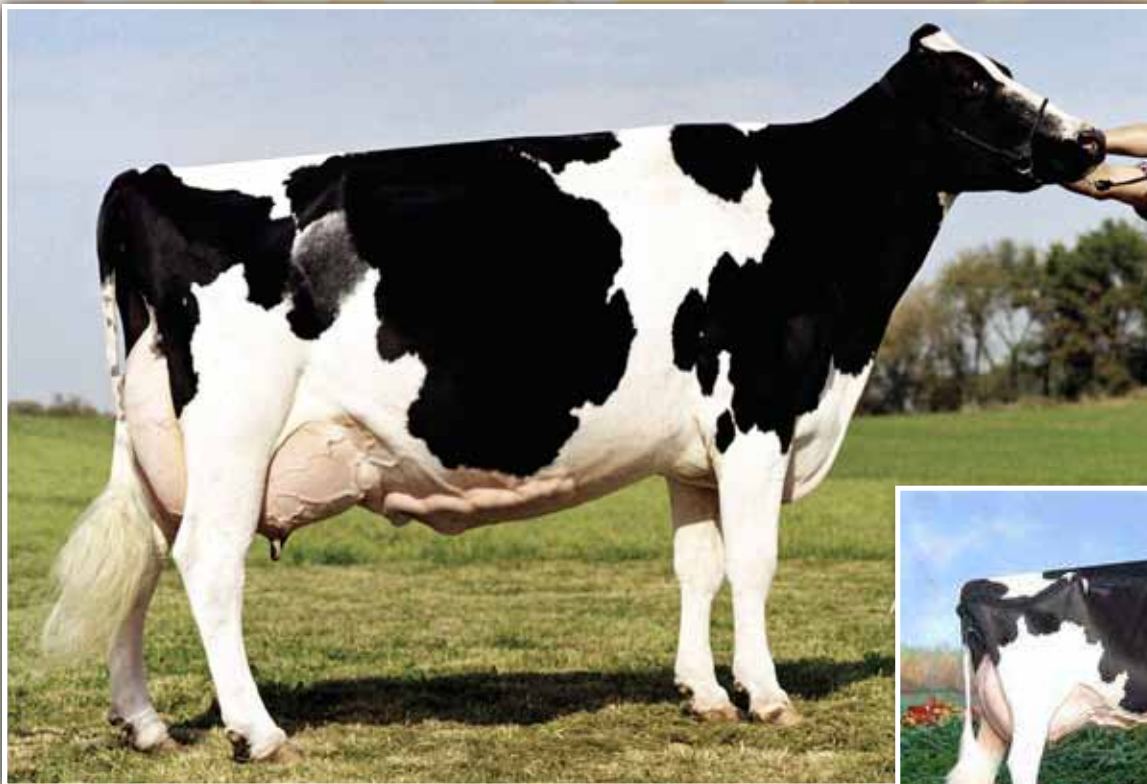
**NEUDAY FACTOR EMMA PB**

HOCANF6730334 B:22 Aug 1996  
VG-88-6YR-CAN 4\*(8/13)  
07-11 305 11902 466 3.9 392 3.3  
365 13560 532 3.9 449 3.3  
BCA 237 251 247

7 LACT: 83631 2861 3.4 2820 3.4 KG

Avg BCA: M222(10) F199(-6) P233(18)  
Progeny Data: 1EX 7VG 3GP 0G 0F

11 DAUS ME AVG: 10110 388 3.8 336 3.3  
AVG BCA: M191 F199 P203



Vandyk-K Integrity Paradise EX-96 2E DOM 3\*  
Full Sister to 3rd Dam



Vandyk-K Gold Phoenix EX-94 2E 1\*  
Dam



LOT NO. 5E

Issued: 04 Oct 2016

**4 EMBRYOS**

CAN-PA Aug\*16 PA LPI 2515  
 KG M 440 F 36 %F 0.18  
 SCS 2.86 P 18 %P 0.04  
 CAN-PA Aug\*16 CONF 13  
 MS 10 F&L 9 DS 11 RP 6

**WALNUTLAWN SOLOMON PB**

HOCANM11775998 \*CVF\*RF\*BYF\*BLF\*DPF\*CNF ET  
 CAN-GPA Aug\*16 80%Rel GPA LPI 2726/76%  
 KG M 56/22% F 34/59% %F 0.29 PRO\$  
 SCS 2.89 P 17/39% %P 0.14 1029  
 CAN-GPA Aug\*16 78%Rel CONF 18/99%  
 MS 16 F&L 12 DS 16 RP 8

**VANDYK-K GOLD PHOENIX-ET PB**

HOUSAF62137381 ET B:25 Dec 2005  
 EX-94-2E-USA 1\*(0/5)  
 MACE Aug\*16 66%Rel MLPI 2303/57%  
 KG M 823/80% F 37/81% %F 0.05 PRO\$  
 SCS 2.82 P 19/69% %P-0.07 864  
 MACE Aug\*16 69%Rel CONF 8/89%  
 MS 4 F&L 6 DS 6 RP 3  
 02-02 305 11921 510 4.3 372 3.1  
 03-02 305 15527 873 5.6 458 2.9  
 365 17699 946 5.3 536 3.0  
 2 LACT: 36737 1696 4.6 1151 3.1 KG  
 3RD 5-YR 2011 BC FALL HARVEST  
 Progeny Data: 0EX 2VG 2GP 0G 0F  
 6 DAUS ME AVG: 12703 476 3.7 394 3.1  
 AVG BCA: M240 F244 P238

Consigned by: REIMER HOLSTEINS  
 RAVENDALE HOLSTEINS

**VAL-BISSON DOORMAN PB**

HOCANM107281711 \*CVF\*BYF\*BLF\*DPF ET  
 VG-87-3YR-CAN ST'16  
 CAN-GEV Aug\*16 98%Rel GLPI 3046/93%  
 KG M 174 F 48 %F 0.39 P 40 %P 0.30  
 CAN-GEV Aug\*16 97%Rel CONF 18

**MISTY SPRINGS LAVANGUARD SUE PB**

HOCANF9979603 \*BYF ET B:16 Aug 2009  
 VG-89-4YR-CAN 6\*(0/30)  
 02-01 305 10998 478 4.3 355 3.2  
 365 12468 543 4.4 411 3.3  
 BCA 276 321 277  
 2 LACT: 32926 1509 4.6 1122 3.4 KG

**BRAEDALE GOLDWYN PB**

HOCANM10705608 \*CVF\*BYF\*BLF  
 GP-84-8YR-CAN GM'12 EXTRA'05  
 CAN-GEV Aug\*16 99%Rel GLPI 2545/99%  
 KG M 38 F 37 %F 0.34 P 18 %P 0.15  
 CAN-GEV Aug\*16 99%Rel CONF 9

**VANDYK-K MORTY POLISH-ET PB**

HOUSAF60579908 ET B:17 Jan 2004  
 EX-94-2E-USA  
 02-01 305 11499 435 3.8 352 3.1  
 03-07 305 11381 442 3.9 387 3.4  
 05-03 305 14515 552 3.8 463 3.2  
 365 17278 638 3.7 560 3.2  
 3 LACT: 50971 1875 3.7 1700 3.3 KG  
 Progeny Data: 0EX 1VG 0GP 1G 0F  
 2 DAUS ME AVG: 10586 398 3.8 341 3.2  
 AVG BCA: M200 F204 P206

**4th-6th Maternal Dam**

VANDYK-K BROKER PANSY-ET EX-90-7YR-USA 2\*  
 VANDYK-K MARK PATTY EX-94-2E-USA  
 VANDYK-K MELVIN PAPPY VG-88-5YR-USA

**DE-SU 521 BOOKEM-ET PB**

HOUSAM66636657 \*CVF\*RF\*BYF\*BLF\*DPF ET  
**VAL-BISSON SHOTTLE IMELDA PB**  
 HOCANF106173432 \*CVF\*BYF\*BLF\*DPF ET  
 EX-91-6YR-CAN 5\*(0/26)

**COMESTAR LAVANGUARD PB**

HOCANM103974966 \*CVF\*BYF\*BLF ET  
 GP-83-4YR-CAN ST'11  
**MISTY SPRINGS FBI SUZANNE PB**  
 HOCANF7866441 ET B:23 Jan 2006  
 VG-87-2YR-CAN 4\*(0/23)

**SHOREMAR JAMES PB**

HOCANM5902195 \*CVF\*BLF  
 GP-81-2YR-CAN EXTRA'98  
**BRAEDALE BALER TWINE PB**  
 HOCANF6860888 \*BLF ETM B:08 Nov 1997  
 VG-86-2YR-CAN 33\*(27/138)

**STOUDER MORTY-ET PB**

HOUSAM17349617 \*CVF\*BYF\*BLF ET  
 EX-CAN  
**VANDYK-K INTEGRITY PATRICIA PB**  
 HOUSAF125507453 B:02 Jun 1998  
 EX-92-3E-USA  
 04-00 305 17169 553 3.2 562 3.3  
 365 20226 661 3.3 672 3.3  
 4 LACT: 94125 3774 4.0 3271 3.5 KG



Springbend Goldwyn Denali EX-91 3E  
Dam



Springbend Aftershock Danica EX-92  
Maternal Sister to embryos



LOT NO. 6E

Issued: 04 Oct 2016

**5 EMBRYOS**

CAN-PA Aug\*16 PA LPI 2593  
 KG M-192 F 40 %F 0.48  
 SCS 2.79 P 9 %P 0.15  
 CAN-PA Aug\*16 CONF 13  
 MS 11 F&L 10 DS 11 RP 5

Consigned by: SPRINGBEND FARMS  
 ROCKLEDGE FARMS

4th-7th Maternal Dam  
 HOLTVALE DANICA VG-87-4YR-CAN 2\*  
 HOLTVALE DIELLA VG-85-3YR-CAN 2\*  
 HOLTVALE DIAMOND VG-85-4YR-CAN  
 HOLTVALE DEIDRE VG-86-3YR-CAN

**WALNUTLAWN SOLOMON PB**

HOCANM11775998 \*CVF\*RDY\*BYF\*BLF\*DPF\*CNF ET  
 CAN-GPA Aug\*16 80%Rel GPA LPI 2726/76%  
 KG M 56/22% F 34/59% %F 0.29 PRO\$  
 SCS 2.89 P 17/39% %P 0.14 1029  
 CAN-GPA Aug\*16 78%Rel CONF 18/99%  
 MS 16 F&L 12 DS 16 RP 8

**VAL-BISSON DOORMAN PB**

HOCANM107281711 \*CVF\*BYF\*BLF\*DPF ET  
 VG-87-3YR-CAN ST'16  
 CAN-GEV Aug\*16 98%Rel GLPI 3046/93%  
 KG M 174 F 48 %F 0.39 P 40 %P 0.30  
 CAN-GEV Aug\*16 97%Rel CONF 18

**DE-SU 521 BOOKEM-ET PB**

HOUSAM66636657 \*CVF\*RDY\*BYF\*BLF\*DPF ET  
**VAL-BISSON SHOTTLE IMELDA PB**  
 HOCANF106173432 \*CVF\*BYF\*BLF\*DPF ET  
 EX-91-6YR-CAN 5\*(0/26)

**MISTY SPRINGS LAVANGUARD SUE PB**

HOCANF9979603 \*BYF ET B:16 Aug 2009  
 VG-89-4YR-CAN 6\*(0/30)  
 02-01 305 10998 478 4.3 355 3.2  
 365 12468 543 4.4 411 3.3  
 BCA 276 321 277  
 2 LACT: 32926 1509 4.6 1122 3.4 KG

**COMESTAR LAVANGUARD PB**

HOCANM103974966 \*CVF\*BYF\*BLF ET  
 GP-83-4YR-CAN ST'11  
**MISTY SPRINGS FBI SUZANNE PB**  
 HOCANF7866441 ET B:23 Jan 2006  
 VG-87-2YR-CAN 4\*(0/23)

**SPRINGBEND GOLDWYN DENALI PB**

HOCANF9587624 B:25 Jan 2008  
 EX-91-3E-CAN  
 MS:93 (FA:7 RAH:9 RAW:7) F&L:91 DS:90 RP:92  
 CAN-GEV Aug\*16 81%Rel GLPI 2459/78%  
 KG M-439/14% F 46/88% %F 0.64 PRO\$  
 SCS 2.68 P 1/32% %P 0.16 905  
 CAN-GEV Aug\*16 79%Rel CONF 8/89%  
 MS 6 F&L 8 DS 6 RP 2  
 02-04 305 11109 492 4.4 360 3.2  
 BCA 276 330 281  
 03-07 305 12419 618 5.0 450 3.6  
 326 12834 641 5.0 468 3.7  
 BCA 263 347 294  
 04-07 305 13047 613 4.7 457 3.5  
 BCA 258 323 282  
 05-07 305 11884 599 5.0 437 3.7  
 BCA 228 307 265  
 5 LACT: 71621 3432 4.8 2542 3.5 KG  
 Avg BCA: M254(4) F319(74) P275(25)  
 2 Superior Lactations  
 Progeny Data: 0EX 1VG 1GP 1G 0F  
 3 DAUS ME AVG: 13021 519 4.0 418 3.2  
 AVG BCA: M246 F266 P253

**BRAEDALE GOLDWYN PB**

HOCANM10705608 \*CVF\*BYF\*BLF  
 GP-84-8YR-CAN GM'12 EXTRA'05  
 CAN-GEV Aug\*16 99%Rel GLPI 2545/99%  
 KG M 38 F 37 %F 0.34 P 18 %P 0.15  
 CAN-GEV Aug\*16 99%Rel CONF 9

**SHOREMAR JAMES PB**

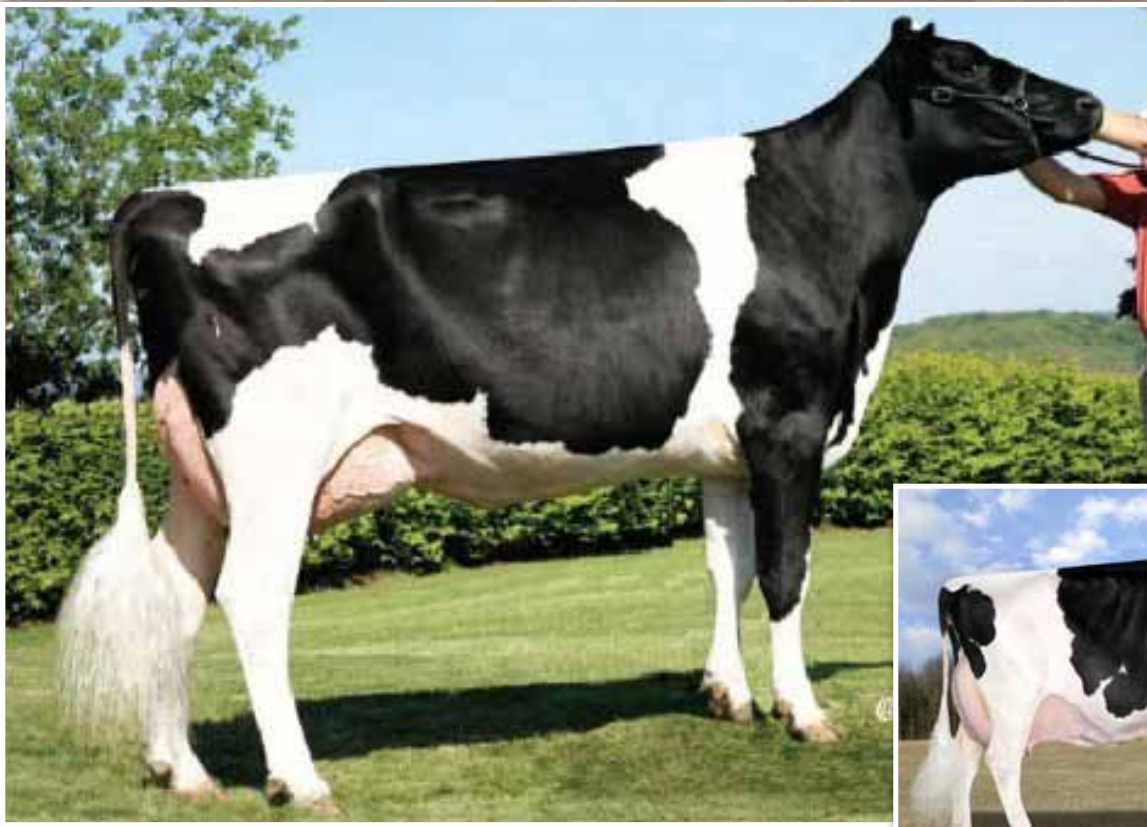
HOCANM5902195 \*CVF\*BLF  
 GP-81-2YR-CAN EXTRA'98  
**BRAEDALE BALER TWINE PB**  
 HOCANF6860888 \*BLF ETM B:08 Nov 1997  
 VG-86-2YR-CAN 33\*(27/138)

**SPRINGBEND OUTSIDE DINAH PB**

HOCANF9203059 ET B:26 Jan 2000  
 EX-91-6YR-CAN 12\*(19/41)  
 04-03 305 13738 598 4.4 435 3.2  
 348 14564 640 4.4 468 3.2  
 BCA 282 334 282  
 05-05 305 13155 567 4.3 416 3.2  
 BCA 266 308 263  
 06-06 305 13399 592 4.4 443 3.3  
 BCA 265 313 275  
 07-11 305 14229 640 4.5 458 3.2  
 BCA 260 320 271  
 6 LACT: 79581 3544 4.5 2626 3.3 KG  
 Avg BCA: M256(12) F305(61) P264(23)  
 2 Superior Lactations  
 Progeny Data: 2EX 9VG 2GP 1G 0F  
 14 DAUS ME AVG: 12650 537 4.2 418 3.3  
 AVG BCA: M239 F275 P253

**COMESTAR OUTSIDE PB**

HOCANM6026421 \*CVF\*BLF ET  
 EX-95-14YR-CAN GM'12 EXTRA'98  
**HOLTVALE DOUBLE DEE PB**  
 HOCANF6287199 B:23 Dec 1994  
 GP-83-4YR-CAN  
 04-00 305 10589 430 4.1 350 3.3  
 348 11384 470 4.1 383 3.4  
 BCA 207 229 216  
 3 LACT: 33495 1423 4.2 1132 3.4 KG  
 Avg BCA: M198(-15) F223(3) P207(-7)  
 Progeny Data: 1EX 0VG 1GP 0G 0F  
 2 DAUS ME AVG: 14450 570 3.9 443 3.1  
 AVG BCA: M273 F292 P268



Budjon-JK Gibson Enjoy EX-93  
Grand Dam



Budjon-JK Linjet Eileen EX-96 4E GMD DOM 4\*  
3rd Dam



LOT NO. 7E

Issued: 04 Oct 2016

**5 EMBRYOS**

CAN-PA Aug\*16 PA LPI 2763  
 KG M-158 F 40 %F 0.46  
 SCS 2.65 P 18 %P 0.23  
 CAN-PA Aug\*16 CONF 16  
 MS 14 F&L 12 DS 14 RP 4

Consigned by: KENBERT ACRES

4th-7th Maternal Dam  
 KRULL BROKER ELEGANCE EX-96-3E-USA 1\*  
 KRULL STARBUCK EXCELLENCY EX-90-4YR-USA  
 KRULL TT EXCELLENCY EX-90-4YR-USA  
 KRULL BOOT MARK EXCELLENCY EX-92-2E-USA

**VAL-BISSON DOORMAN PB**

HOCANM107281711 \*CVF\*BYF\*BLF\*DPF ET  
 VG-87-3YR-CAN ST'16  
 F&L:88 DS:87 RP:87  
 CAN-GEV Aug\*16 98%Rel GLPI 3046/93%  
 KG M 174/28% F 48/76% %F 0.39 PRO\$  
 SCS 2.44 P 40/76% %P 0.30 1548  
 CAN-GEV Aug\*16 97%Rel CONF 18/99%  
 MS 14 F&L 14 DS 18 RP 5  
 Progeny Data: 1301 Daus: 83.00% GP+  
 0EX 233VG 857GP 208G 3F  
 1142 DAUS ME AVG: 11972 492 4.1 397 3.3  
 AVG BCA: M226 F252 P240

**DE-SU 521 BOOKEM-ET PB**

HOUSAM66636657 \*CVF\*RDF\*BYF\*BLF\*DPF ET  
 CAN-GEV Aug\*16 98%Rel GLPI 2739/95%  
 KG M 986 F 36 %F 0.00 P 49 %P 0.15  
 CAN-GEV Aug\*16 96%Rel CONF 9

**VAL-BISSON SHOTTLE IMELDA PB**

HOCANF106173432 \*CVF\*BYF\*BLF\*DPF ET  
 EX-91-6YR-CAN 5\*(0/26)  
 04-03 305 15535 578 3.7 549 3.5  
 365 18373 703 3.8 660 3.6  
 BCA 304 307 343  
 2 LACT: 39418 1655 4.2 1486 3.8 KG

**ENSENADA TABOO PLANET-ET PB**

HOUSAM60597003 \*CVF\*RDF\*BYF\*BLF\*DPF ET  
 EX-90-4YR-USA EXTRA'12 GM'11

**CLEAR-ECHO 822 RAMO 1199-ET PB**

HOUSAF61765027 \*BLF ET B:17 Oct 2004

**PICSTON SHOTTLE-ET PB**

HOGBRM598172 \*CVF\*BYF\*BLF\*MFF ET  
 EX-96-7YR-GBR GM'10 EXTRA'09

**VAL-BISSON GOLDWYN MAYA PB**

HOCANF103857739 \*CVF\*BLF ET B:13 Feb 2006  
 VG-88-6YR-CAN 31\*(5/151)

**KENBERT ATWOOD ENJOY PB**

HOCANF11747291 ET B:01 Jun 2013  
 VG-87-3YR-CAN  
 MS:90 (FA:8 RAH:8 RAW:8) F&L:87 DS:85 RP:87  
 CAN-EBV Aug\*16 57%Rel LPI 2480/48%  
 KG M-490/13% F 32/75% %F 0.46 PRO\$  
 SCS 2.85 P-4/23% %P 0.10 641  
 CAN-EBV Aug\*16 49%Rel CONF 14/99%  
 MS 14 F&L 10 DS 10 RP 3  
 02-00 305 8814 404 4.6 290 3.3  
 BCA 233 287 240  
 03-00 P71 11989 496 4.1 391 3.3  
 PBCA 275 306 277  
 2 LACT: 12702 558 4.4 415 3.3 KG  
 Avg BCA: M254 F297 P259

**MAPLE-DOWNS-I G W ATWOOD PB**

HOCANM8956379 \*CVF\*RDF\*BYF\*BLF\*DPF ET  
 EX-90-4YR-USA ST'12  
 CAN-GEV Aug\*16 99%Rel GLPI 2793/98%  
 KG M 500 F 55 %F 0.34 P 24 %P 0.07  
 CAN-GEV Aug\*16 99%Rel CONF 15

**BUDJON-JK GIBSON ENJOY-ET PB**

HOUSAF135104754 ET B:01 Mar 2004  
 EX-93-5YR-USA  
 02-04 305 6854 308 4.5 241 3.5  
 04-00 305 8532 357 4.2 287 3.4  
 05-06 305 11122 480 4.3 376 3.4  
 365 12410 537 4.3 425 3.4  
 3 LACT: 33439 1461 4.4 1174 3.5 KG  
 Progeny Data: 0EX 6VG 5GP 0G 0F  
 9 DAUS ME AVG: 11327 478 4.2 359 3.2  
 AVG BCA: M214 F245 P217

**BRAEADALE GOLDWYN PB**

HOCANM10705608 \*CVF\*BYF\*BLF  
 GP-84-8YR-CAN GM'12 EXTRA'05

**MD-DELIGHT DURHAM ATLEE-ET PB**

HOUSAF131704103 ET B:11 Sep 2001  
 EX-92-4YR-USA GMD DOM 10\*(0/50)

**SILKY GIBSON PB**

HOCANM6215479 \*BYC\*CVF\*BLF ET  
 EX-96-12YR-CAN ST'99

**BUDJON-JK LINJET EILEEN-ET PB**

HOUSAF125791216 ET B:24 Oct 1998  
 EX-96-4E-USA GMD DOM 4\*(0/22)  
 05-06 305 17486 638 3.6 562 3.2  
 365 20276 747 3.7 665 3.3  
 5 LACT: 88020 3145 3.6 2957 3.4 KG  
 ALL-AMERICAN 2004  
 HM. ALL-CANADIAN 2002  
 1ST 5-YR 2004 WORLD DAIRY EXPO  
 3RD SR.3-YR 2002 ROYAL  
 Progeny Data: 4EX 3VG 1GP 0G 0F  
 8 DAUS ME AVG: 12915 472 3.7 395 3.1  
 AVG BCA: M244 F242 P239





KHW Regiment Apple-Red EX-96 3E DOM 13\*  
3rd Dam

4 Embryos- Mixed Flush Zimmerview Wonka Loyola & Progenesis Savage



LOT NO. 8E

Issued: 04 Oct 2016

**EMBRYO**

CAN-PA Aug\*16 PA LPI 2958  
KG M 1261 F 42 %F-0.06  
SCS 2.94 P 43 %P 0.02  
CAN-PA Aug\*16 CONF 15  
MS 13 F&L 15 DS 8 RP 4

**EMBRYO**

CAN-PA Aug\*16 PA LPI 3017  
KG M 1107 F 59 %F 0.16  
SCS 2.78 P 51 %P 0.14  
CAN-PA Aug\*16 CONF 12  
MS 11 F&L 11 DS 5 RP 4

4th-7th Maternal Dam

KAMPS-HOLLOW ALTITUDE-ET EX-95-2E-USA 2\*  
CLOVER-MIST ALISHA-ET EX-93-3E-USA  
CLOVER-MIST AUGY STAR-ET EX-94-4E-USA  
D-R-A AUGUST EX-96-4E-USA

Consigned by: BIENERT HOLSTEINS  
FERME LESPERRON

**ZIMMVIEW WONKA LOYOLA-P PB**

HOUSAM73926711 \*POC\*RDC\*CVF\*BYF\*BLF\*DPF  
CAN-GPA Aug\*16 73%Rel GPA LPI 3051/61  
KG M 2002/96% F 56/83% %F-0.20 PRO\$  
SCS 2.91 P 58/93% %P-0.07 1983  
CAN-GPA Aug\*16 69%Rel CONF 15/99%  
MS 14 F&L 12 DS 8 RP 3

**PROGENESIS SAVAGE PB**

HOCANM11935914 \*CDC\*RDC\*CVF\*BYF\*BLF\*DPF\*C  
CAN-GPA Aug\*16 73%Rel GPA LPI 3168/69%  
KG M 1694/92% F 90/98% %F 0.27 PRO\$  
SCS 2.60 P 73/98% %P 0.15 2523  
CAN-GPA Aug\*16 70%Rel CONF 9/94%  
MS 10 F&L 5 DS 2 RP 3

**INTENSE KINGBOY AMAZING PB**

HOCANF108899442 \*RDC ET B:02 Jan 2015  
CAN-GPA Aug\*16 73%Rel GPA LPI 2865/69%  
KG M 520/66% F 28/70% %F 0.07 PRO\$  
SCS 2.96 P 28/83% %P 0.10 1419  
CAN-GPA Aug\*16 70%Rel CONF 14/99%  
MS 11 F&L 17 DS 7 RP 4

**MORNINGVIEW MCC KINGBOY-ET PB**

HOUSAM72044077 \*CVF\*BYF\*BLF\*DPF ET  
CAN-GPA Aug\*16 80%Rel GPA LPI 3078/75%  
KG M 1591 F 55 %F-0.05 P 53 %P 0.00  
CAN-GPA Aug\*16 77%Rel CONF 13

**MS APPLES UNO APRIL-ET PB**

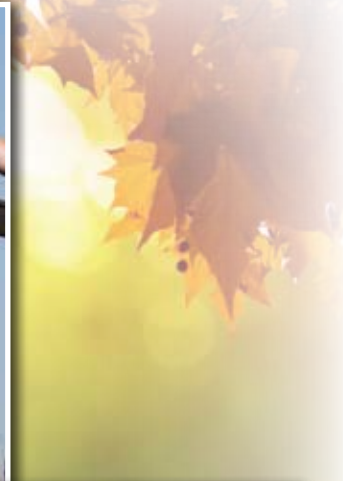
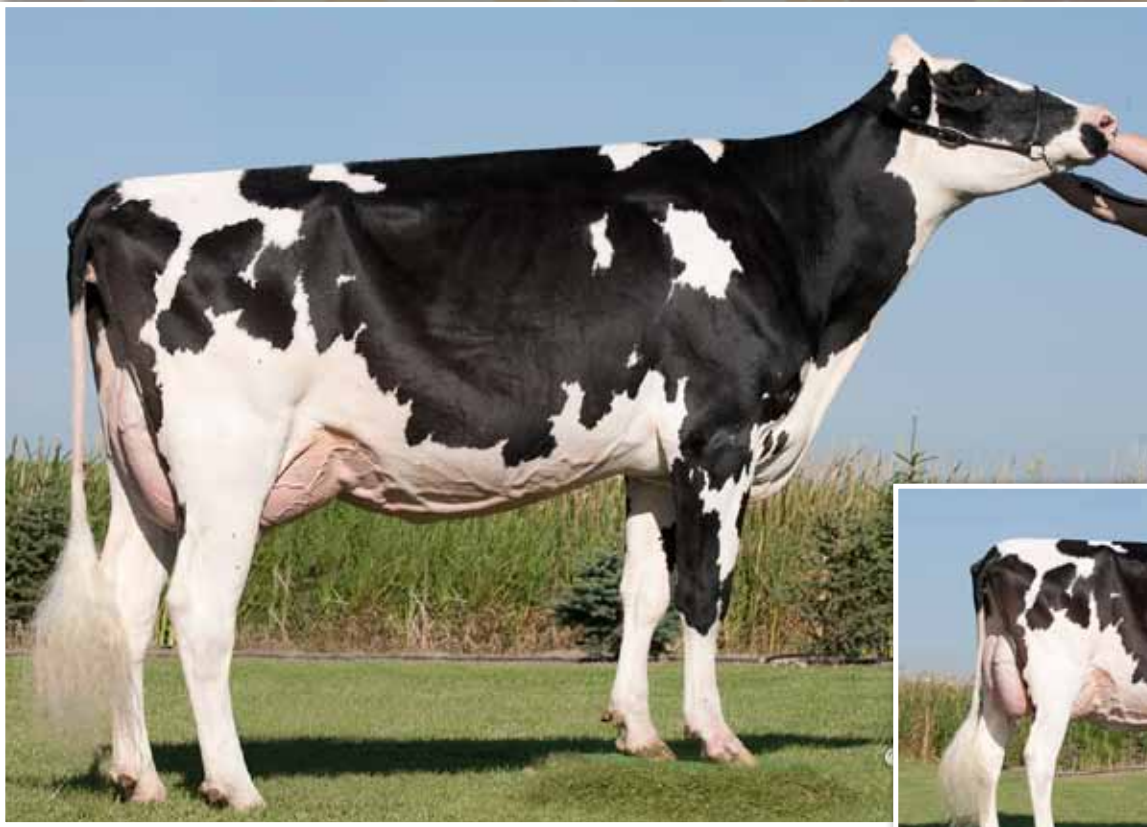
HOUSAF72227612 \*RDC\*CVF\*BLF\*DPF ET  
VG-85-2YR-CAN  
02-05 305 8604 365 4.2 308 3.6  
363 9782 423 4.3 357 3.7  
BCA 209 240 237  
1 LACT: 9782 423 4.3 357 3.6 KG  
Avg BCA: M209(4) F240(18) P237(26)

**DE-SU BKM MCCUTCHEN 1174-ET PB**

HOUSAM69990138 \*CVF\*BYF\*BLF\*DPF ET  
EX-92-3YR-USA ST'15  
MORNINGVIEW SUPER MEGAN-ET PB  
HOUSAF68654508 \*BYF ET B:03 Sep 2010

**AMIGHETTI NUMERO UNO ET PB**

HOITAM17990915143 \*CVF\*BYF\*BLF\*DPF ET  
EX-90-3YR-HUN ST'15  
KHW REGIMENT APPLE-RED-ET PB  
HOUSAF135511521 R&W \*CVC ET B:03 May 2004  
EX-96-3E-USA DOM 13\*(3/63)  
04-01 305 13699 654 4.8 504 3.7  
365 16216 763 4.7 596 3.7  
5 LACT: 94311 4492 4.8 3561 3.8 KG  
ALL-AMERICAN 2006  
ALL-AMERICAN R&W 2006  
GRAND 2011 WORLD DAIRY EXPO R&W  
RES. GRAND 2009 ROYAL R&W  
1ST MATURE COW 2011 WORLD DAIRY EXPO R&W  
1ST 5-YR 2009 ROYAL R&W  
Progeny Data: 4EX 12VG 1GP 0G 0F  
14 DAUS ME AVG: 12809 550 4.3 432 3.4  
AVG BCA: M242 F282 P261



Butz-Butler Gold Banner VG-88 1\*  
Dam of "Beemer"



LOT NO. 9E

Issued: 19 Oct 2016

**3 EMBRYOS**

CAN-PA Aug\*16 PA LPI 2753  
 KG M 374 F 36 %F 0.21  
 SCS 2.66 P 26 %P 0.14  
 CAN-PA Aug\*16 CONF 16  
 MS 14 F&L 11 DS 14 RP 6

Consigned by: VAN DEN POL DAIRY

4th-7th Maternal Dam  
 REGANCREST JUROR BRINA-ET EX-92-4YR-USA  
 REGANCREST AEROSTAR BERT-ET EX-90-5YR-USA  
 REGANCREST MARK CHAIRMAN BEA EX-91-2E-USA  
 REGANCREST BOARD CHAIRMAN BEA EX-90-6YR-USA

**VAL-BISSON DOORMAN PB**

HOCANM107281711 \*CVF\*BYF\*BLF\*DPF ET  
 VG-87-3YR-CAN ST'16  
 F&L:88 DS:87 RP:87  
 CAN-GEV Aug\*16 98%Rel GLPI 3046/93%  
 KG M 174/28% F 48/76% %F 0.39 PRO\$  
 SCS 2.44 P 40/76% %P 0.30 1548  
 CAN-GEV Aug\*16 97%Rel CONF 18/99%  
 MS 14 F&L 14 DS 18 RP 5  
 Progeny Data: 1385 Daus: 83.00% GP+  
 0EX 251VG 910GP 221G 3F  
 1142 DAUS ME AVG: 11972 492 4.1 397 3.3  
 AVG BCA: M226 F252 P240

**DE-SU 521 BOOKEM-ET PB**

HOUSAM66636657 \*CVF\*RDF\*BYF\*BLF\*DPF ET  
 CAN-GEV Aug\*16 98%Rel GLPI 2739/95%  
 KG M 986 F 36 %F 0.00 P 49 %P 0.15  
 CAN-GEV Aug\*16 96%Rel CONF 9

**VAL-BISSON SHOTTLE IMELDA PB**

HOCANF106173432 \*CVF\*BYF\*BLF\*DPF ET  
 EX-91-6YR-CAN 5\*(0/26)  
 04-03 305 15535 578 3.7 549 3.5  
 365 18373 703 3.8 660 3.6  
 BCA 304 307 343  
 3 LACT: 41750 1774 4.2 1557 3.7 KG

**ENSENADA TABOO PLANET-ET PB**

HOUSAM60597003 \*CVF\*RDF\*BYF\*BLF\*DPF ET  
 EX-90-4YR-USA EXTRA'12 GM'11

**CLEAR-ECHO 822 RAMO 1199-ET PB**

HOUSAF61765027 \*BLF ET B:17 Oct 2004  
 VG-86-2YR-USA DOM

**PICSTON SHOTTLE-ET PB**

HOGBRM598172 \*CVF\*BYF\*BLF\*MPF ET  
 EX-96-7YR-GBR GM'10 EXTRA'09

**VAL-BISSON GOLDWYN MAYA PB**

HOCANF103857739 \*CVF\*BLF ET B:13 Feb 2006  
 VG-88-6YR-CAN 31\*(5/151)

**BUTZ-BUTLER GOLD BANNER-ET PB**

HOUSAF140145517 ET B:04 Aug 2009  
 VG-88-2YR-CAN 1\*(0/7)  
 MS:89 (FA:8 RAH:9 RAW:8) F&L:87 DS:90 RP:87  
 CAN-GEV Aug\*16 85%Rel GLPI 2460/83%  
 KG M 573/69% F 24/65% %F 0.02 PRO\$  
 SCS 2.87 P 12/55% %P-0.07 944  
 CAN-GEV Aug\*16 83%Rel CONF 14/99%  
 MS 13 F&L 7 DS 9 RP 6  
 02-06 305 13010 544 4.2 399 3.1  
 365 15158 639 4.2 476 3.1  
 BCA 306 346 298  
 1 LACT: 22755 1001 4.4 773 3.4 KG  
 Avg BCA: M306(50) F346(73) P298(49)  
 1 Superior Lactations  
 Progeny Data: 0EX 3VG 4GP 1G 0F  
 9 DAUS ME AVG: 13921 521 3.7 435 3.1  
 AVG BCA: M263 F267 P263

**BRAEDALE GOLDWYN PB**

HOCANM10705608 \*CVF\*BYF\*BLF  
 GP-84-8YR-CAN GM'12 EXTRA'05  
 CAN-GEV Aug\*16 99%Rel GLPI 2545/99%  
 KG M 38 F 37 %F 0.34 P 18 %P 0.15  
 CAN-GEV Aug\*16 99%Rel CONF 9

**REGANCREST BRASILIA-ET PB**

HOUSAF62496866 ET B:02 Dec 2005  
 EX-92-2E-USA DOM 11\*(6/52)  
 02-03 305 12710 457 3.6 376 3.0  
 365 15050 538 3.6 449 3.0  
 05-03 305 13386 523 3.9 367 2.7  
 2 LACT: 39577 1492 3.8 1182 3.0 KG  
 Progeny Data: 1EX 16VG 4GP 0G 0F  
 22 DAUS ME AVG: 13921 517 3.7 425 3.1  
 AVG BCA: M263 F265 P257

**SHOREMAR JAMES PB**

HOCANM5902195 \*CVF\*BLF  
 GP-81-2YR-CAN EXTRA'98

**BRAEDALE BALER TWINE PB**

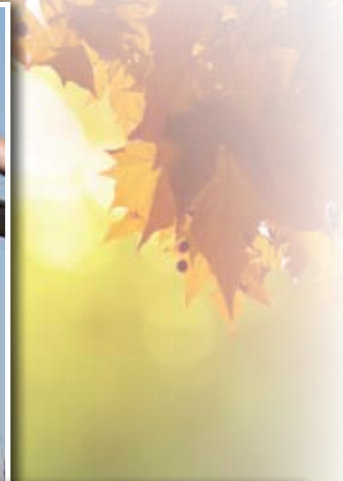
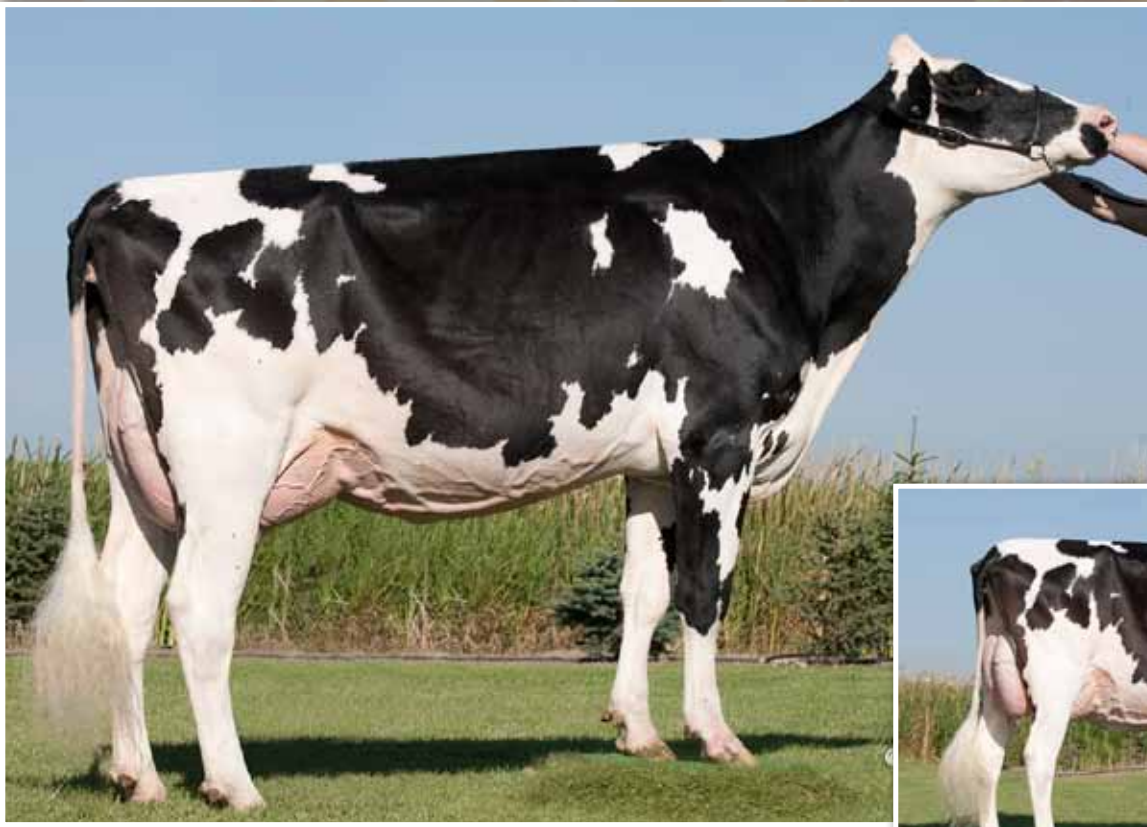
HOCANF6860888 \*BLF ETM B:08 Nov 1997  
 VG-86-2YR-CAN 33\*(27/138)

**PICSTON SHOTTLE-ET PB**

HOGBRM598172 \*CVF\*BYF\*BLF\*MPF ET  
 EX-96-7YR-GBR GM'10 EXTRA'09

**REGANCREST-PR BARBIE-ET PB**

HOUSAF60602011 \*CVF ET B:24 Jul 2001  
 EX-92-7YR-USA GMD DOM 6\*(0/33)  
 02-06 305 12120 478 3.9 401 3.3  
 365 14374 561 3.9 476 3.3  
 2 LACT: 32282 1221 3.8 1049 3.2 KG  
 NOM. ALL-AMERICAN 2004  
 Progeny Data: 1EX 2VG 0GP 0G 0F  
 3 DAUS ME AVG: 15350 677 4.4 495 3.2  
 AVG BCA: M290 F347 P299



Butz-Butler Gold Banner VG-88 1\*  
Dam of "Beemer"



LOT NO. 10E

Issued: 19 Oct 2016

**5 EMBRYOS**

CAN-PA Aug\*16 PA LPI 2705  
 KG M 432 F 28 %F 0.11  
 SCS 2.83 P 20 %P 0.06  
 CAN-PA Aug\*16 CONF 17  
 MS 15 F&L 12 DS 12 RP 6

**DYMENTHOLM MR APPLES AVALANCHE PB**  
 HOCANM11957107 \*RDC\*CVC\*BYF\*BLF MB  
 CAN-GPA Aug\*16 77%Rel GPA LPI 2949/73%  
 KG M 290/34% F 32/56% %F 0.21 PRO\$  
 SCS 2.78 P 28/59% %P 0.18 1447  
 CAN-GPA Aug\*16 75%Rel CONF 19/99%  
 MS 16 F&L 17 DS 14 RP 5

**BUTZ-BUTLER GOLD BANNER-ET PB**  
 HOUSAF140145517 ET B:04 Aug 2009  
 VG-88-2YR-CAN 1\*(0/7)  
 MS:89 (FA:8 RAH:9 RAW:8) F&L:87 DS:90 RP:87  
 CAN-GEV Aug\*16 85%Rel GLPI 2460/83%  
 KG M 573/69% F 24/65% %F 0.02 PRO\$  
 SCS 2.87 P 12/55% %P-0.07 944  
 CAN-GEV Aug\*16 83%Rel CONF 14/99%  
 MS 13 F&L 7 DS 9 RP 6  
 02-06 305 13010 544 4.2 399 3.1  
 365 15158 639 4.2 476 3.1  
 BCA 306 346 298  
 1 LACT: 22755 1001 4.4 773 3.4 KG  
 Avg BCA: M306(50) F346(73) P298(49)  
 1 Superior Lactations  
 Progeny Data: 0EX 3VG 4GP 1G 0F  
 9 DAUS ME AVG: 13921 521 3.7 435 3.1  
 AVG BCA: M263 F267 P263

Consigned by: VAN DEN POL DAIRY

**DE-SU BKM MCCUTCHEN 1174-ET PB**  
 HOUSAM69990138 \*CVF\*BYF\*BLF\*DPF ET  
 EX-92-3YR-USA ST'15  
 CAN-GEV Aug\*16 98%Rel GLPI 3065/93%  
 KG M 986 F 61 %F 0.22 P 41 %P 0.08  
 CAN-GEV Aug\*16 97%Rel CONF 15  
**KHW REGIMENT APPLE C-RED-ETN PB**  
 HOUSAF70244494 R&W \*CVC ETA B:27 Sep 2010  
 VG-89-3YR-CAN  
 03-07 305 14616 614 4.2 516 3.5  
 365 16760 705 4.2 604 3.6  
 BCA 313 357 346  
 2 LACT: 31684 1358 4.3 1209 3.8 KG

**BRAEDALE GOLDWYN PB**  
 HOCANM10705608 \*CVF\*BYF\*BLF  
 GP-84-8YR-CAN GM'12 EXTRA'05  
 CAN-GEV Aug\*16 99%Rel GLPI 2545/99%  
 KG M 38 F 37 %F 0.34 P 18 %P 0.15  
 CAN-GEV Aug\*16 99%Rel CONF 9  
**REGANCREST BRASILIA-ET PB**  
 HOUSAF62496866 ET B:02 Dec 2005  
 EX-92-2E-USA DOM 11\*(6/52)  
 02-03 305 12710 457 3.6 376 3.0  
 365 15050 538 3.6 449 3.0  
 05-03 305 13386 523 3.9 367 2.7  
 2 LACT: 39577 1492 3.8 1182 3.0 KG  
 Progeny Data: 1EX 16VG 4GP 0G 0F  
 22 DAUS ME AVG: 13921 517 3.7 425 3.1  
 AVG BCA: M263 F265 P257

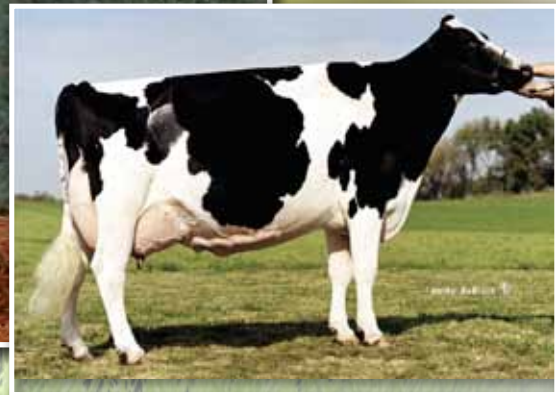
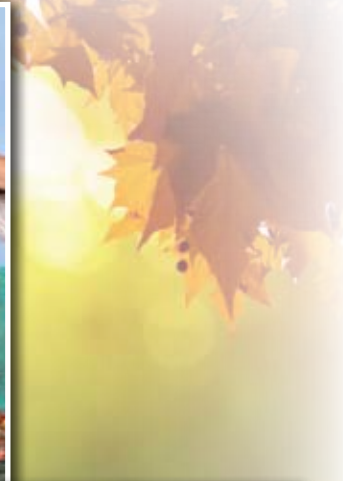
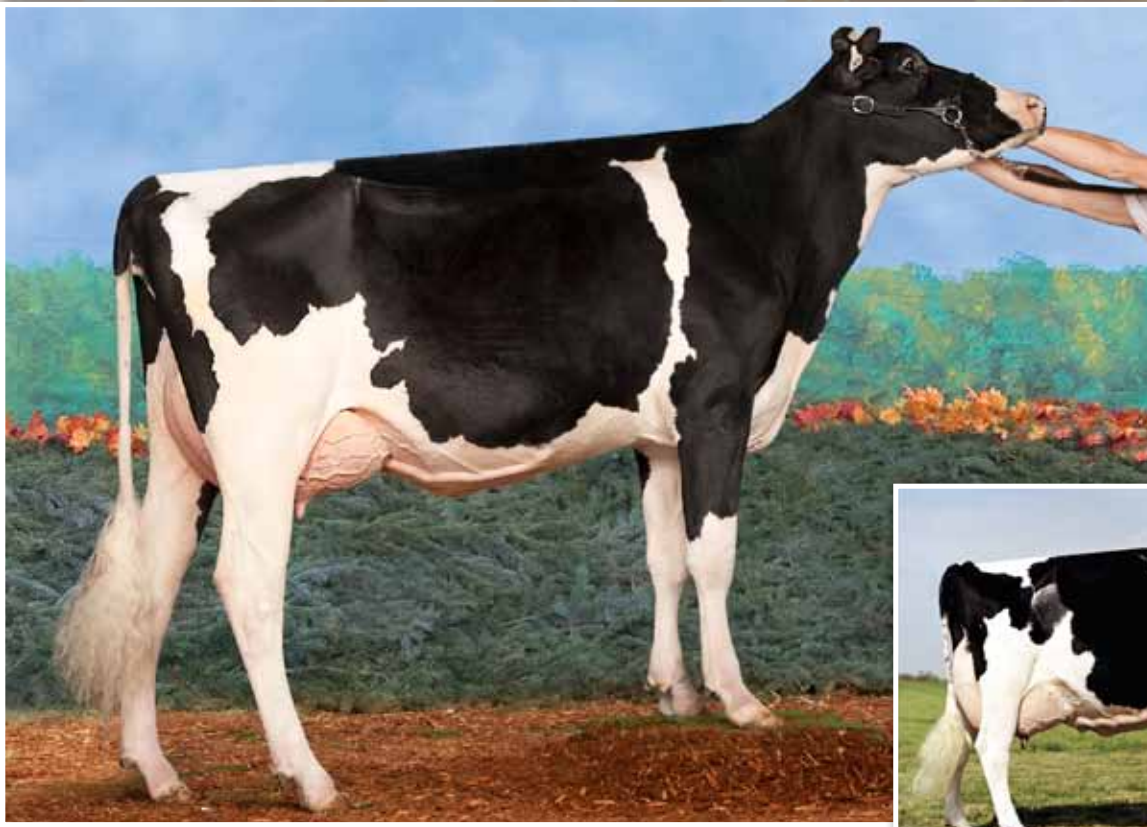
4th-7th Maternal Dam  
 REGANCREST JUROR BRINA-ET EX-92-4YR-USA  
 REGANCREST AEROSTAR BERT-ET EX-90-5YR-USA  
 REGANCREST MARK CHAIRMAN BEA EX-91-2E-USA  
 REGANCREST BOARD CHAIRMAN BEA EX-90-6YR-USA

**DE-SU 521 BOOKEM-ET PB**  
 HOUSAM66636657 \*CVF\*PDF\*BYF\*BLF\*DPF ET  
**SULLY SHOTTLE MAY-TW PB**  
 HOUSAF138218285 MB B:27 Mar 2007  
 EX-90-6YR-USA DOM 6\*(0/31)

**CARROUSEL REGIMENT-RED-ET PB**  
 HOUSAM128891296 R&W \*CVF\*BLF ET  
 VG-85-3YR-CAN  
**KAMPS-HOLLOW ALTITUDE-ET PB**  
 HOUSAF129136431 \*RDC\*CVC\*BLF ET  
 EX-95-2E-USA DOM 2\*(0/13)

**SHOREMAR JAMES PB**  
 HOCANM5902195 \*CVF\*BLF  
 GP-81-2YR-CAN EXTRA'98  
**BRAEDALE BALER TWINE PB**  
 HOCANF6860888 \*BLF ETM B:08 Nov 1997  
 VG-86-2YR-CAN 33\*(27/138)

**PICSTON SHOTTLE-ET PB**  
 HOGBRM598172 \*CVF\*BYF\*BLF\*MPFF ET  
 EX-96-7YR-GBR GM'10 EXTRA'09  
**REGANCREST-PR BARBIE-ET PB**  
 HOUSAF60602011 \*CVF ET B:24 Jul 2001  
 EX-92-7YR-USA GMD DOM 6\*(0/33)  
 02-06 305 12120 478 3.9 401 3.3  
 365 14374 561 3.9 476 3.3  
 2 LACT: 32282 1221 3.8 1049 3.2 KG  
 NOM. ALL-AMERICAN 2004  
 Progeny Data: 1EX 2VG 0GP 0G 0F  
 3 DAUS ME AVG: 15350 677 4.4 495 3.2  
 AVG BCA: M290 F347 P299



Morsan Goldwyn Paradise EX-90 2\*  
Dam



LOT NO. 11E

Issued: 19 Oct 2016

**5 EMBRYOS**

CAN-PA Aug\*16 PA LPI 2594  
 KG M 181 F 24 %F 0.17  
 SCS 2.74 P 10 %P 0.04  
 CAN-PA Aug\*16 CONF 16  
 MS 14 F&L 10 DS 12 RP 11

Consigned by: VAN DEN POL DAIRY

4th-6th Maternal Dam  
 VANDYK-K BROKER PANSY-ET EX-90-7YR-USA 2\*  
 VANDYK-K MARK PATTY EX-94-2E-USA  
 VANDYK-K MELVIN PAPPY VG-88-5YR-USA

**CYCLE DOORMAN JACOBY-ET PB**

HOB40M3013614066 \*POF\*CVF\*RD\*BYF\*BLF\*DPF  
 CAN-GPA Aug\*16 78%Rel GPA LPI 2791/73%  
 KG M 316/35% F 27/50% %F 0.15 PRO\$  
 SCS 2.58 P 11/28% %P 0.00 1313  
 CAN-GPA Aug\*16 75%Rel CONF 20/99%  
 MS 17 F&L 13 DS 13 RP 12

**VAL-BISSON DOORMAN PB**

HOCANM107281711 \*CVF\*BYF\*BLF\*DPF ET  
 VG-87-3YR-CAN ST'16  
 CAN-GEV Aug\*16 98%Rel GLPI 3046/93%  
 KG M 174 F 48 %F 0.39 P 40 %P 0.30  
 CAN-GEV Aug\*16 97%Rel CONF 18

**DE-SU 521 BOOKEM-ET PB**

HOUSAM66636657 \*CVF\*RD\*BYF\*BLF\*DPF ET  
 VAL-BISSON SHOTTLE IMELDA PB  
 HOCANF106173432 \*CVF\*BYF\*BLF\*DPF ET  
 EX-91-6YR-CAN 5\*(0/26)

**BRYERSQUART GCHIP JAIL-P-ET PB**

HOUSAF71402418 \*RDC B:17 May 2012  
 VG-88-3YR-USA  
 01-11 305 14325 559 3.9 447 3.1  
 341 14325 559 3.9 447 3.1  
 1 LACT: 14325 559 3.9 447 3.1 KG

**MR CHASSITY GOLD CHIP-ET PB**

HOUSAM140145553 \*CVF\*RD\*BYF\*BLF\*DPF ET  
 EX-94-6YR-USA ST'14  
 BRYERSQUART KING JAMIE-RED PB  
 HOUSAF68995613 B:08 Jul 2010  
 GP-83-3YR-USA

**MORSAN GOLDWYN PARADISE PB**

HOCANF9915560 ET B:16 Jun 2009  
 EX-90-5YR-CAN 2\*(5/5)  
 MS:89 (FA:7 RAH:8 RAW:6) F&L:90 DS:93 RP:92  
 CAN-EBV Aug\*16 68%Rel LPI 2396/53%  
 KG M 45/38% F 21/60% %F 0.18 PRO\$  
 SCS 2.89 P 8/47% %P 0.06 724  
 CAN-EBV Aug\*16 53%Rel CONF 12/98%  
 MS 10 F&L 7 DS 10 RP 9  
 02-01 305 9939 398 4.0 326 3.3  
 BCA 257 274 261  
 03-05 305 13101 494 3.8 444 3.4  
 365 14575 550 3.8 496 3.4  
 BCA 269 276 286  
 04-09 219 7028 227 3.2 193 2.7  
 BCA 139 122 122  
 3 LACT: 36215 1373 3.8 1186 3.3 KG  
 Avg BCA: M222(-32) F224(-28) P223(-29)  
 2ND 5-YR 2014 GREEN ACRES  
 Progeny Data: 1EX 1VG 0GP 0G 0F  
 2 DAUS ME AVG: 14767 547 3.7 445 3.0  
 AVG BCA: M279 F280 P269

**BRAEDALE GOLDWYN PB**

HOCANM10705608 \*CVF\*BYF\*BLF  
 GP-84-8YR-CAN GM'12 EXTRA'05  
 CAN-GEV Aug\*16 99%Rel GLPI 2545/99%  
 KG M 38 F 37 %F 0.34 P 18 %P 0.15  
 CAN-GEV Aug\*16 99%Rel CONF 9

**SHOREMAR JAMES PB**

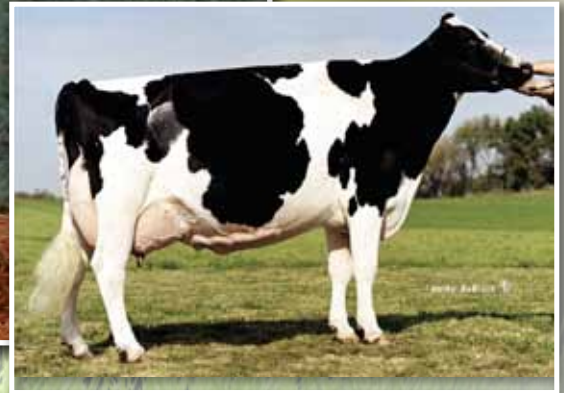
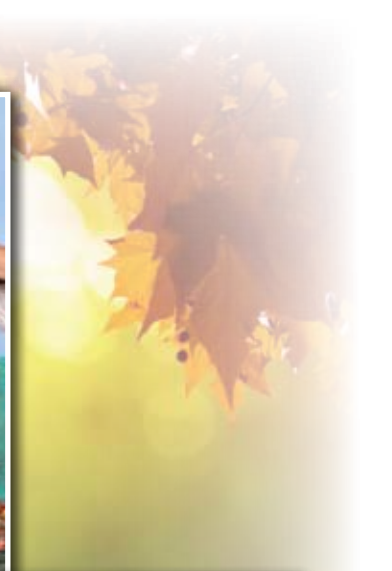
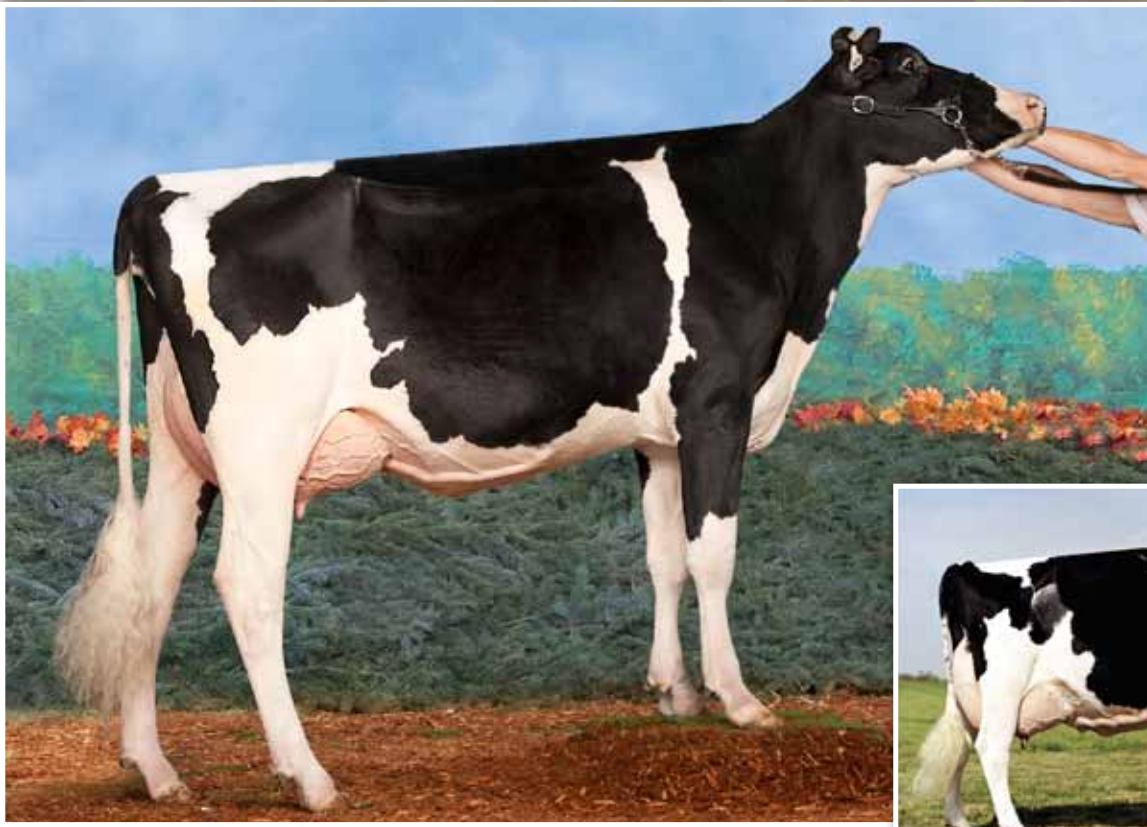
HOCANM5902195 \*CVF\*BLF  
 GP-81-2YR-CAN EXTRA'98  
 BRAEDALE BALER TWINE PB  
 HOCANF6860888 \*BLF ET B:08 Nov 1997  
 VG-86-2YR-CAN 33\*(27/138)

**MISS PARADISES PRESENCE-ET PB**

HOUSAF60579881 ET B:09 Dec 2002  
 VG-89-2YR-CAN 14\*(4/67)  
 02-05 305 9331 388 4.2 312 3.3  
 BCA 229 257 240  
 04-06 305 14402 672 4.7 476 3.3  
 365 16727 767 4.6 565 3.4  
 BCA 295 373 307  
 2 LACT: 32672 1458 4.5 1132 3.5 KG  
 Avg BCA: M262(28) F315(86) P274(38)  
 1 Superior Lactations  
 RES. ALL-CANADIAN 2005  
 HM. GRAND 2006 BC SPRING  
 2ND SR.2-YR 2005 ROYAL  
 HM. GRAND 2005 CENTRAL FRASER VALLEY  
 1ST SR.3-YR 2006 BC SPRING  
 Progeny Data: 3EX 13VG 5GP 0G 0F  
 19 DAUS ME AVG: 13233 529 4.0 418 3.2  
 AVG BCA: M250 F271 P253

**SILKY GIBSON PB**

HOCANM6215479 \*BYC\*CVF\*BLF ET  
 EX-96-12YR-CAN ST'99  
 VANDYK-K INTEGRITY PARADISE PB  
 HOUSAF17117235 B:15 Jun 1996  
 EX-96-2E-USA DOM 3\*(5/10)  
 05-10 305 14996 646 4.3 513 3.4  
 365 17953 758 4.2 621 3.5  
 3 LACT: 60519 2449 4.0 2189 3.6 KG  
 ALL-AMERICAN 2002,2000,1999  
 RES. ALL-CANADIAN 2000  
 GRAND 2000 WORLD DAIRY EXPO  
 GRAND 2002 WORLD DAIRY EXPO  
 1ST MATURE COW 2002 WORLD DAIRY EXPO  
 3RD 5-YR 2001 WORLD DAIRY EXPO  
 Progeny Data: 0EX 1VG 0GP 0G 0F  
 2 DAUS ME AVG: 13815 593 4.3 453 3.3  
 AVG BCA: M261 F304 P274



Morsan Goldwyn Paradise EX-90 2\*  
Dam



LOT NO. 12E

Issued: 19 Oct 2016

**5 EMBRYOS**

Consigned by: VAN DEN POL DAIRY

4th-6th Maternal Dam

VANDYK-K BROKER PANSY-ET EX-90-7YR-USA 2\*  
VANDYK-K MARK PATTY EX-94-2E-USA  
VANDYK-K MELVIN PAPPY VG-88-5YR-USA

CAN-PA Aug\*16 PA LPI 2673  
KG M 168 F 27 %F 0.20  
SCS 2.84 P 18 %P 0.13  
CAN-PA Aug\*16 CONF 16  
MS 13 F&L 12 DS 12 RP 7

**DYMENTHOLM MR APPLES AVALANCHE PB**  
HOCANM11957107 \*RDC\*CVC\*BYF\*BLF MB  
CAN-GPA Aug\*16 77%Rel GPA LPI 2949/73%  
KG M 290/34% F 32/56% %F 0.21 PRO\$  
SCS 2.78 P 28/59% %P 0.18 1447  
CAN-GPA Aug\*16 75%Rel CONF 19/99%  
MS 16 F&L 17 DS 14 RP 5

**DE-SU BKM MCCUTCHEN 1174-ET PB**  
HOUSAM69990138 \*CVF\*BYF\*BLF\*DPF ET  
EX-92-3YR-USA ST'15  
CAN-GEV Aug\*16 98%Rel GLPI 3065/93%  
KG M 986 F 61 %F 0.22 P 41 %P 0.08  
CAN-GEV Aug\*16 97%Rel CONF 15

**DE-SU 521 BOOKEM-ET PB**  
HOUSAM66636657 \*CVF\*RDF\*BYF\*BLF\*DPF ET  
**SULLY SHOTTLE MAY-TW PB**  
HOUSAF138218285 MB B:27 Mar 2007  
EX-90-6YR-USA DOM 6\*(0/31)

**KHW REGIMENT APPLE C-RED-ETN PB**  
HOUSAF70244494 R&W \*CVC ETA B:27 Sep 2010  
VG-89-3YR-CAN  
03-07 305 14616 614 4.2 516 3.5  
365 16760 705 4.2 604 3.6  
BCA 313 357 346  
2 LACT: 31684 1358 4.3 1209 3.8 KG

**CARROUSEL REGIMENT-RED-ET PB**  
HOUSAM128891296 R&W \*CVF\*BLF ET  
VG-85-3YR-CAN  
**KAMPS-HOLLOW ALTITUDE-ET PB**  
HOUSAF129136431 \*RDC\*CVC\*BLF ET  
EX-95-2E-USA DOM 2\*(0/13)

**MORSAN GOLDWYN PARADISE PB**  
HOCANF9915560 ET B:16 Jun 2009  
EX-90-5YR-CAN 2\*(5/5)  
MS:89 (FA:7 RAH:8 RAW:6) F&L:90 DS:93 RP:32  
CAN-EBV Aug\*16 68%Rel LPI 2396/53%  
KG M 45/38% F 21/60% %F 0.18 PRO\$  
SCS 2.89 P 8/47% %P 0.06 724  
CAN-EBV Aug\*16 53%Rel CONF 12/98%  
MS 10 F&L 7 DS 10 RP 9  
02-01 305 9939 398 4.0 326 3.3  
BCA 257 274 261  
03-05 305 13101 494 3.8 444 3.4  
365 14575 550 3.8 496 3.4  
BCA 269 276 286  
04-09 219 7028 227 3.2 193 2.7  
BCA 139 122 122  
3 LACT: 36215 1373 3.8 1186 3.3 KG  
Avg BCA: M222(-32) F224(-28) P223(-29)  
2ND 5-YR 2014 GREEN ACRES  
Progeny Data: 1EX 1VG 0GP 0G 0F  
2 DAUS ME AVG: 14767 547 3.7 445 3.0  
AVG BCA: M279 F280 P269

**BRAEDALE GOLDWYN PB**  
HOCANM10705608 \*CVF\*BYF\*BLF  
GP-84-8YR-CAN GM'12 EXTRA'05  
CAN-GEV Aug\*16 99%Rel GLPI 2545/99%  
KG M 38 F 37 %F 0.34 P 18 %P 0.15  
CAN-GEV Aug\*16 99%Rel CONF 9  
**MISS PARADISES PRESENCE-ET PB**  
HOUSAF60579881 ET B:09 Dec 2002  
VG-89-2YR-CAN 14\*(4/67)  
02-05 305 9331 388 4.2 312 3.3  
BCA 229 257 240  
04-06 305 14402 672 4.7 476 3.3  
365 16727 767 4.6 565 3.4  
BCA 295 373 307  
2 LACT: 32672 1458 4.5 1132 3.5 KG  
Avg BCA: M262(28) F315(86) P274(38)  
1 Superior Lactations  
RES. ALL-CANADIAN 2005  
HM. GRAND 2006 BC SPRING  
2ND SR.2-YR 2005 ROYAL  
HM. GRAND 2005 CENTRAL FRASER VALLEY  
1ST SR.3-YR 2006 BC SPRING  
Progeny Data: 3EX 13VG 5GP 0G 0F  
19 DAUS ME AVG: 13233 529 4.0 418 3.2  
AVG BCA: M250 F271 P253

**SHOREMAR JAMES PB**  
HOCANM5902195 \*CVF\*BLF  
GP-81-2YR-CAN EXTRA'98  
**BRAEDALE BALER TWINE PB**  
HOCANF6860888 \*BLF ETM B:08 Nov 1997  
VG-86-2YR-CAN 33\*(27/138)  
**SILKY GIBSON PB**  
HOCANM6215479 \*BYC\*CVF\*BLF ET  
EX-96-12YR-CAN ST'99  
**VANDYK-K INTEGRITY PARADISE PB**  
HOUSAF17117235 B:15 Jun 1996  
EX-96-2E-USA DOM 3\*(5/10)  
05-10 305 14996 646 4.3 513 3.4  
365 17953 758 4.2 621 3.5  
3 LACT: 60519 2449 4.0 2189 3.6 KG  
ALL-AMERICAN 2002,2000,1999  
RES. ALL-CANADIAN 2000  
GRAND 2000 WORLD DAIRY EXPO  
GRAND 2002 WORLD DAIRY EXPO  
1ST MATURE COW 2002 WORLD DAIRY EXPO  
3RD 5-YR 2001 WORLD DAIRY EXPO  
Progeny Data: 0EX 1VG 0GP 0G 0F  
2 DAUS ME AVG: 13815 593 4.3 453 3.3  
AVG BCA: M261 F304 P274



Stoneden Fools Gold Red VG-88 5\*  
Grand Dam



LOT NO. 13E

**5 EMBRYOS**

CAN-PA Aug\*15 PA LPI+2807  
 KG M+1169 F+46 %F+0.04  
 SCS 2.64 P+40 %P+0.02  
 CAN-PA Aug\*15 Conf+15  
 MS+13 F&L+9 DS+11 R+7

Consigned by: SHADYNOOK FARMS LTD.

4th-6th Maternal Dam  
 MARKTWIN CHARLES DIXIE EX-90-CAN  
 MARKTWIN YOLANDA-RED VG-86-3YR-CAN  
 MARKTWIN TT YVONNE VG-86-3YR-CAN

**STANTONS HIGH OCTANE PB**

HOCANM11696704 \*CVF\*BYF\*BLF\*DPF\*CNF ET  
 CAN-GPA Aug\*15 76%Rel GPA LPI+3141/72%  
 KG M+1875/96% F+58/89% %F-0.09 PRO\$  
 SCS 2.64 P+55/94% %P-0.05 +2170  
 CAN-GPA Aug\*15 74%Rel Conf+18  
 MS+17 F&L+10 DS+11 R+8

**DE-SU BKM MCCUTCHEN 1174-ET PB**

HOUSAM69990138 \*CVF\*BYF\*BLF\*DPF ET  
 EX-92-3YR-USA  
 CAN-GEV Aug\*15 87%Rel GLPI+3059/82%  
 KG M+1197 F+68 %F+0.26 P+46 %P+0.07  
 CAN-GEV Aug\*15 84%Rel Conf+15  
**MS CHASSITY OBS CLAIRE-ET PB**  
 HOUSAF141008075 ET  
 VG-87-2YR-CAN 3\* (0/16)  
 01-10 305 16924 630 3.7 486 2.9  
 365 19752 737 3.7 573 2.9  
 BCA 437 438 392  
 1 LACT: 24536 922 3.8 731 3.0 KG

**DE-SU 521 BOOKEM-ET PB**

HOUSAM66636657 \*CVF\*RDF\*BYF\*BLF\*DPF ET  
**SULLY SHOTTLE MAY-TW PB**  
 HOUSAF138218285 MB  
 EX-90-6YR-USA DOM 5\* (0/26)  
**DE-SU OBSERVER-ET PB**  
 HOUSAM65917481 \*CVF\*RDF\*BYF\*BLF\*DPF ET  
 VG-88-3YR-USA ST'14  
**REGANCREST S CHASSITY-ET PB**  
 HOUSAF62496899 \*BYF\*BLF ET  
 EX-92-4YR-USA DOM GMD 20\* (0/101)

NOW GP-83

**MORSAN DOORMAN FOOLS GOLD RED PB**

HOCANF11840709 R&W \*VRR\*BKC ET B:2013 Dec 18  
 CAN-GPA Aug\*15 71%Rel GPA LPI+2473/68%  
 KG M+462/64% F+33/78% %F+0.16 PRO\$  
 SCS 2.64 P+25/81% %P+0.09 +910  
 CAN-GPA Aug\*15 69%Rel Conf+12/98%  
 MS+9 F&L+8 DS+11 R+5

**VAL-BISSON DOORMAN PB**

HOCANM107281711 \*CVF\*BYF\*BLF\*DPF ET  
 VG-87-3YR-CAN  
 CAN-GPA Aug\*15 77%Rel GPA LPI+2995/73%  
 KG M+978 F+57 %F+0.21 P+53 %P+0.20  
 CAN-GPA Aug\*15 74%Rel Conf+15  
**STONEDEN FOOLS GOLD RED PB**  
 HOCANF7702715 R&W \*VRR\*BKC ET  
 VG-88-3YR-CAN 5\* (0/25)  
 02-04 305 14896 531 3.6 442 3.0  
 BCA 366 352 343  
 04-03 305 19918 786 3.9 568 2.9  
 365 23019 881 3.8 663 2.9  
 BCA 396 425 359  
 07-11 P296 14399 556 3.9 427 3.0  
 PBCA 260 275 250  
 3 LACT: 65006 2457 3.8 1944 3.0 KG  
 AVG BCA: M341(+81) F351(+81) P317(+59)  
 2 Superior Lactations  
 1ST INT.CALF 2007 TRI-COUNTY  
 Progeny Data: 0EX 8VG 3GP 3G 0F  
 12 DAUS ME AVG: 14537 572 3.9 446 3.1  
 AVG BCA: M275 F293 P269

**DE-SU 521 BOOKEM-ET PB**

HOUSAM66636657 \*CVF\*RDF\*BYF\*BLF\*DPF ET  
**VAL-BISSON SHOTTLE IMELDA PB**  
 HOCANF106173432 \*CVF\*BYF\*BLF\*DPF ET  
 VG-89-4YR-CAN 2\* (0/13)  
**BRAEDALE GOLDWYN PB**  
 HOCANM10705608 \*CVF\*BYF\*BLF  
 GP-84-8YR-CAN EXTRA'05 GM'12  
**MARKTWIN LEE DIANA PB**  
 HOCANF10576178 R&W \*VRR\*BKC  
 VG-85-3YR-CAN 2\* (2/8)  
 03-06 305 7768 289 3.7 231 3.0  
 365 8793 331 3.8 267 3.0  
 BCA 166 168 155  
 4 LACT: 27224 1042 3.8 820 3.0 KG  
 AVG BCA: M166(+0) F167(-8) P156(-7)  
 Progeny Data: 0EX 2VG 3GP 0G 0F  
 5 DAUS ME AVG: 12415 478 3.9 371 3.0  
 AVG BCA: M235 F245 P224



*Amities Goldwyn Lover EX-91 11\**  
7 Generation VG or EX from the Laurie Sheik family  
Grand Dam



*Amities Dorcy Lauthia VG-89*  
Res. Grand Champion IPE 2015  
Dam



LOT NO. 14E

**5 EMBRYOS**

CAN-PA Aug\*15 PA LPI+2834  
 KG M+1018 F+44 %F+0.08  
 SCS 2.77 P+39 %P+0.06  
 CAN-PA Aug\*15 Conf+15  
 MS+14 F&L+13 DS+9 R+2

Consigned by: SHADYNOOK FARMS LTD.

4th-7th Maternal Dam  
 OCONNORS TVF RUDOLPH LILLY VG-88-8YR-CAN 36\*  
 COMESTAR LAURA BLACK VG-87-3YR-CAN 24\*  
 COMESTAR LAURIE SHEIK ET VG-88-5YR-CAN 23\*  
 ELYSA ANTHONY LEA EX-CAN 15\*

**POL BUTTE MC BEEMER PB**

HOCANM7525863 ET  
 CAN-GPA Aug\*15 76%Rel GPA LPI+2899/72%  
 KG M+1342/86% F+54/87% %F+0.06 PRO\$  
 SCS 2.81 P+40/82% %P-0.03 +1609  
 CAN-GPA Aug\*15 73%Rel Conf+18  
 MS+16 F&L+12 DS+12 R+2

**DE-SU BKM MCCUTCHEN 1174-ET PB**

HOUSAM69990138 \*CVF\*BYF\*BLF\*DPF ET  
 EX-92-3YR-USA  
 CAN-GEV Aug\*15 87%Rel GLPI+3059/82%  
 KG M+1197 F+68 %F+0.26 P+46 %P+0.07  
 CAN-GEV Aug\*15 84%Rel Conf+15  
**BUTZ-BUTLER GOLD BANNER-ET PB**  
 HOUSAF140145517 ET  
 VG-88-2YR-CAN  
 02-06 305 13010 544 4.2 399 3.1  
 365 15158 639 4.2 476 3.1  
 BCA 306 346 298  
 1 LACT: 22755 1001 4.4 773 3.4 KG

**DE-SU 621 BOOKEM-ET PB**

HOUSAM66636657 \*CVF\*RDF\*BYF\*BLF\*DPF ET  
**SULLY SHOTLE MAY-TW PB**  
 HOUSAF138218285 MB  
 EX-90-6YR-USA DOM 5\* (0/26)  
**BRAEDALE GOLDWYN PB**  
 HOCANM10705608 \*CVF\*BYF\*BLF  
 GP-84-8YR-CAN EXTRA'05 GM'12  
**REGANCREST BRASILIA-ET PB**  
 HOUSAF62496866 ET  
 EX-92-2E-USA DOM 11\* (6/52)

**AMITIES DORCY LAUTHIA PB**

HOCANF106869158 \*BYC ET B:2010 Oct 09  
 VG-89-4YR-CAN  
 MS:91 (FA:9 RAH:9 RAW:5) F&L:86 DS:93 R:88  
 CAN-GEV Aug\*15 77%Rel GLPI+2768/73%  
 KG M+693/76% F+33/78% %F+0.09 PRO\$  
 SCS 2.72 P+37/93% %P+0.14 +1435  
 CAN-GEV Aug\*15 74%Rel Conf+12/98%  
 MS+11 F&L+13 DS+5 R+2  
 02-05 305 10468 410 3.9 361 3.4  
 365 12325 490 4.0 432 3.5  
 BCA 254 270 278  
 03-10 305 11057 424 3.8 396 3.6  
 BCA 229 234 254  
 2 LACT: 28425 1138 4.0 1025 3.6 KG  
 AVG BCA: M242(-9) F252(-21) P266(+7)  
 Progeny Data: 0EX OVG 1GP 1G OF  
 2 DAUS ME AVG: 10480 475 4.5 371 3.5  
 AVG BCA: M198 F243 P224

**COYNE-FARMS DORCY-ET PB**

HOUSAM139005002 \*BYC\*CVF\*BLF ET  
 CAN-GEV Aug\*15 95%Rel GLPI+2894/91%  
 KG M+1512 F+34 %F-0.19 P+44 %P-0.05  
 CAN-GEV Aug\*15 93%Rel Conf+11  
**AMITIES GOLDWYN LOVER PB**  
 HOCANF103404412 ET  
 EX-91-CAN 11\* (0/59)  
 02-04 305 10820 457 4.2 372 3.4  
 365 12445 526 4.2 433 3.5  
 BCA 269 307 291  
 05-02 305 10016 382 3.8 335 3.3  
 BCA 192 199 206  
 07-10 305 10326 340 3.3 341 3.3  
 BCA 189 168 201  
 3 LACT: 48038 1943 4.0 1719 3.6 KG  
 AVG BCA: M217(-7) F225(-4) P233(+1)  
 1 Superior Lactation  
 Progeny Data: 1EX 18VG 17GP 0G 1F  
 32 DAUS ME AVG: 12621 502 4.0 422 3.3  
 AVG BCA: M238 F257 P255

**SANDY-VALLEY BOLTON-ET PB**

HOUSAM131823833 \*BYC\*CVF\*BLF ET  
 EX-90-5YR-USA GM'10 EXTRA'10  
**COYNE-FARMS BRET DAFERS-ET PB**  
 HOUSAF61319723 \*CVC ET  
 EX-91-5YR-USA DOM  
**BRAEDALE GOLDWYN PB**  
 HOCANM10705608 \*CVF\*BYF\*BLF  
 GP-84-8YR-CAN EXTRA'05 GM'12  
**COMESTAR IGNITER LORIANA PB**  
 HOCANF101048700 ET  
 VG-86-4YR-CAN 13\* (10/56)  
 02-02 305 9895 418 4.2 343 3.5  
 365 11230 481 4.3 394 3.5  
 BCA 245 277 266  
 3 LACT: 36221 1593 4.4 1274 3.5 KG  
 AVG BCA: M224(-7) F257(+29) P241(+6)  
 Progeny Data: 4EX 12VG 13GP 3G OF  
 27 DAUS ME AVG: 12804 505 3.9 415 3.2  
 AVG BCA: M242 F259 P251