



Ms Butlerow Uno Liva2074-ET
Dam of Lot 47

Widholm Family Cattle
 c/o Todd Widholm
 2897 N 300 E Rd.
 Clifton, IL 60927
 815/228-0591

47 WFC Command Liva 9361-ET

Born 1/17/2015 Reg. 840 3125944883 100%RHA
 GTPI +2666

PTA +559M +85F +.24% +39P +.09% +5.9PL 2/2015
 PTA +756NM +2.2DPR 2.74SCS 6.8%DCE
 PTA +2.73T +2.41UDC +2.45FLC 2/2015

• **The #2 Commander in the World!**

Terms: Cash unless prior arrangements are made specifically with seller and sale management is advised of these special terms in advance of the sale.

LARCREST COMMANDER-ET
58591942 99%RHA TV TL TY TD
 77K GTPI +2606

PTA +1380M +76F +56P 76%R 12/2014
 PTA +707NM +.10%F +.06%P 100%US
 PTA +4.5PL 2.84SCS +2DPR 6.7%DCE
 PTA +2.88T +2.47UDC +2.35FLC 75%R 12/2014

MS BUTLERVW UNO LIVA2074-ET
72437621 99%RHA

77K GTPI +2242
 PTA +396NM +.22%F +.04%P
 PTA +4.1PL 2.73SCS +2.5DPR 6.7%DCE
 PTA +2.29T +2.52UDC +2.18FLC 76%R 12/2014

MOUNTFIELD SSI DCY MOGUL-ET
840 3006972816 TR TV TL TY TD

GTPI +2586
 PTA +2.84T +2.64UDC +3.39FLC 92%R 12/2014
LARCREST CALINDA-ET 70119330
99%RHA
 GTPI +2183

AMIGHETI NUMERO UNO-ET
7990915143ITA TV TL TY TD

GM GTPI +2357
 PTA +2.09T +2.05UDC +1.28FLC 90%R 12/2014
ROCKING-P BOWSER LUNA-ET
69381312 99%RHA
 VG-86 VVG+V 3-07 GTPI +2087
 PTA +401M +24F +23P 80%R 12/2014
 PTA +296NM +.04%F +.04%P
 PTA +1.4PL 3.03SCS +2DPR 6.5%DCE
 PTA +1.69T +2.24UDC +1.86FLC 81%R 12/2014
 2-05 3 365 35150 4.4 1536 3.5 1223

3rd Dam: ZBW-JP Shottle Lulu-ET
 (VG-87 VVV+V)

2-03 2 344 30088 4.1 1234 3.4 1023

4th Dam: SRF-ZBW TS Louanna-ET
 (EX-92 EEEVE)

2-000 2 365 30030 3.8 1133 3.3 992

5th Dam: Stone-Rise Durham Lizzy
 (3E-95 GMD DOM)

6-00 2 365 50470 3.4 1558 3.5 1774

LIFE 2213 229970 3.3 7675 3.4 7709

HHM All-American 125,000lb. Cow 2007

All-NY Aged Cow 2007

6th Dam: Stone-Rise Indy Leah
 (VG-88 VG-MS)

4-01 2 353 34590 3.5 1205 3.1 1088

LIFE 2016 198790 3.5 6919 3.1 6086

7th Dam: Stone-Rise Horton Lilith (GP-81)

3-01 2 346 26710 3.4 902 3.0 800

8th Dam: Stone-Rise Leadman Lex
 (VG-88 GMD DOM)

9-05 2 365 35590 4.1 1454 3.4 1193

9th Dam: Podonque Bell Ellie (GP-82)

5-06 2 365 28110 3.6 1003 3.1 881

10th Dam: Podonque Pete Aaggie Ella (VG-86)

3-06 2 331 18780 3.8 705 3.1 525

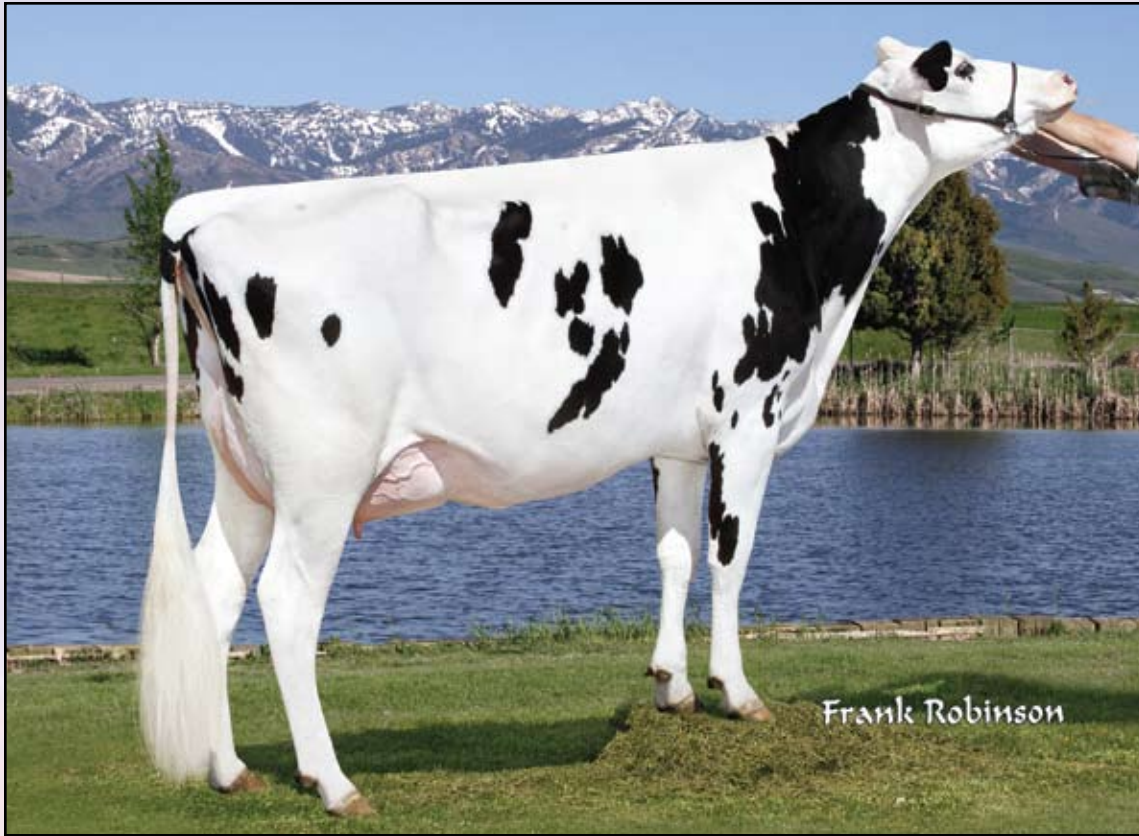
11th Dam: Podonque Comet Aaggie Rena
 (EX-90)

12th Dam: Podonque Bootmaker Aaggie Nora
 (EX-90 GMD)

13th Dam: Podonque X Aaggie Gloria-TW
 (VG-86)

14th Dam: Podonque Burke Aaggie Palma
 (VG-88)

15th Dam: P Medel Aaggie Lucille (EX-96)



Roorda Obsvr Majic 15272-ET (VG-86)
Full Sister to the 2nd Dam of Lot 48

48

WFC 1st McCari 9306-ET

Born 12/20/2014 Reg. 840 3125944828 100%RHA
 GTPI +2607

PTA +1659M +85F +.00% +55P +.02% +5.7PL
 PTA +709NM +.3DPR 2.89SCS 6.8%DCE
 PTA +3.00T +2.84UDC +1.83FLC 2/2015

Widholm Family Cattle
c/o Todd Widholm
 2897 N 300 E Rd.
 Clifton, IL 60927
 815/228-0591

• First Class Milk, Fat, Protein, and 3.0 Type!

Terms: Cash unless prior arrangements are made specifically with seller and sale management is advised of these special terms in advance of the sale.

ZAHBULLS ALTA1STCLASS-ET

71441918 TV TL TY TD

77K GTPI +2524

PTA +700M +58F +27P 76%R 12/2014

PTA +634NM +.13%F +.02%P 100%US

PTA +5.7PL 2.72SCS +1.8DPR 6.4%DCE

PTA +2.88T +3.26UDC +2.09FLC 76%R 12/2014

AMIGHETI NUMERO UNO-ET

7990915143ITA TV TL TY TD

GM GTPI +2257

ZAHBULLS DORCY GLAMOUR-ET

69551522 TY

GP-83 V+GGV DOM 2-10

2-01 2 365 25850 4.4 1146 3.3 850

SEAGULL-BAY SUPERSIRE-ET 69981349

TV TL TY TD

VG-87 VVVV 3-07 GTPI +2558

PTA +1936M +89F +62P 79%R 12/2014

ROORDA OB MCKENZIE 15267-ET

70338772

GTPI +2329

PTA +866M +38F +28P 78%R 12/2014

PTA +528NM +.02%F +.01%P

PTA +5.2PL 2.90SCS +1.8DPR 5.6%DCE

PTA +1.82T +2.37UDC +.40FLC 77%R 12/2014

• Full Sister to Roorda Obsvr Majic 15272-ET (VG-86), sold for \$55,000 in the 2011 Destination Vegas Sale

ROORDA SS MCCARI 15884-ET

71013758 TL TY TD

9K GTPI +2489

PTA +2039M +72F +60P 72%R 12/2014

PTA +699NM -.01%F -.01%P

PTA +4.9PL 2.99SCS +.2DPR 6.2%DCE

PTA +1.76T +1.55UDC +.61FLC 71%R 12/2014

• Due in April to Lottomax!

• EXTREME for Milk, Fat & Protein for her Age Group!!!!

3rd Dam: Roorda Shottle 6802-ET

(VG-85 V+VVV DOM 2Y)

2-00 3 365 32590 3.6 1180 3.1 1000

4th Dam: Seagull-Bay Manat Mirage-ET

(EX-90 VEVVE DOM)

3-06 3 365 35900 3.8 1364 3.4 1229

• Sold for \$20,000 in the Seagull Bay Dispersal

• 1 EX & 26 VG Daughters

5th Dam: Lynmead Cleitus Minnow-ET

(2E-91 EEEVV GMD DOM)

4-10 3 365 49550 3.7 1857 3.2 1592

7-00 3 365 47140 3.5 1637 3.1 1479

LIFE 2626 255910 3.7 9446 3.3 8481

6th Dam: CMV Belwood Mindy-ET

(VG-85 GMD DOM)

4-01 2 365 36341 3.6 1305 3.4 1239

7th Dam: Briarpatch-R Misty-ET

(VG-85 GMD DOM)

8th Dam: Rilara Mars Las Ravena

(EX-91 GMD DOM)

4-03 2 305 29030 4.6 1329

9th Dam: Rag Apple Locust-Grove Charm

(VG-86 GMD DOM)

5-02 2 26321 3.6 948