

Photo: Patty Jones



**Cookiecutter MOM *Hue-ET*  
VG-88 2Yr**

GLPI +3063 Conf. +13 | GTPI +2145  
Sold \$200,000 in the Sale of Stars 2012  
**2<sup>nd</sup> Dam**

**3A**

**5 #1 IVF SEXED DRACO  
EMBRYO LOT FROM EPIC HUE**

CAN-PA Aug\*14 PA LPI+3274  
KG M+1779 F+88 %F+0.21  
SCS 2.75 P+77 %P+0.18  
CAN-PA Aug\*14 Conf+14  
MS+12 F&L+6 DS+8 R+6

4th-9th Maternal Dam  
COOKIECUTTER GLD HOLLER-ET VG-88-2YR-USA  
MS KINGS-RNSM CHAMP HALEY-ET EX-90-4YR-USA  
REGANCREST-JDV HANNA-ET EX-90-5YR-USA  
LONG-HAVEN RUDOLPH DEE-ET EX-90-2E-USA  
SNOW-N DENISES DELLIA EX-95-2E-USA 5\*  
SNOW-N DORYS DENISE EX-90-2E-USA

PA TPI 2470

**MR COIN DRACO 15006-ET PB**  
HO840M3012574853 \*CVF\*BYF\*BLF\*DPF  
CAN-GPA Aug\*14 70%Rel GPA LPI+3345/67%  
KG M+2145/98% F+98/99% %F+0.18  
SCS 2.57 P+82/99% %P+0.12  
CAN-GPA Aug\*14 66%Rel Conf+11  
MS+14 F&L+0 DS+1 R+5

**FARNEAR-TBR-BH CASHCOIN-ET PB**  
HOUSAM70354884 \*CVF\*BYF\*BLF ET  
CAN-GPA Aug\*14 77%Rel GPA LPI+2941/73%  
KG M+1120 F+65 %F+0.25 P+48 %P+0.10  
CAN-GPA Aug\*14 73%Rel Conf+10

**MISS OCD ROBST DELICIOUS-ET PB**  
HO840F3006989479 ET  
VG-86-2YR-USA

**LOOKOUT PESCE EPIC HUE PB**  
HOCANF107766242 ET B:2012 Jun 03  
CAN-GPA Aug\*14 74%Rel GPA LPI+3202/69%  
KG M+2145/94% F+78/99% %F+0.24  
SCS 2.92 P+72/99% %P+0.23  
CAN-GPA Aug\*14 67%Rel Conf+16/99%  
MS+10 F&L+12 DS+14 R+7

**GENERATIONS EPIC PB**  
HOCANM11104016 \*CVF\*BYF\*BLF\*DPF ET  
EX-94-CAN  
GMACE Aug\*14 88%Rel GPA LPI+2744/80%  
KG M+1345 F+36 %F-0.14 P+49 %P+0.05  
CAN-GPA Aug\*14 74%Rel Conf+11

**COOKIECUTTER MOM HUE-ET PB**  
HO840F3007069685 \*CVF\*BYF\*BLF\*DPF ET  
VG-88-2YR-CAN  
02-04 305 11474 484 4.2 421 3.7  
365 13103 549 4.2 483 3.7  
BCA 285 321 324  
1 LACT: 16669 705 4.2 633 3.8 KG  
AVG BCA: M285 F321 P324  
Progeny Data: 0EX 0VG 0GP 1G 0F  
1 DAUS ME AVG: 12439 611 4.9 407 3.3  
AVG BCA: M235 F313 P246

GPA LPI 3202 Conf.+16 DGV 3386 Conf.+18	
GTPI 2327 \$621NM 2.2PL 0.4DPR	
1351M 81F 0.12%F 64P 0.09%P 2.84SCS	
GPTAT+3.2 2.05UDC 2.61FLC (08/14)	

**3B**

**5 #1 IVF SEXED DRACO  
EMBRYO LOT FROM EPIC HUE**

CAN-PA Aug\*14 PA LPI+3274  
KG M+1779 F+88 %F+0.21  
SCS 2.75 P+77 %P+0.18  
CAN-PA Aug\*14 Conf+14  
MS+12 F&L+6 DS+8 R+6



**Lookout Pesce Epic *Hue***

#1 GPA LPI Epic daughter in Canada (08/14)  
GPA LPI 3202 Conf.+16 | DGV 3386 Conf.+18  
GTPI 2327 GPTAT 3.20  
**Dam**

**COOKIECUTTER SHTHOLLERWOOD PB**  
HOUSAF65597532  
EX-92-2E-USA DOM  
02-04 305 11603 564 4.9 409 3.5  
365 13794 663 4.8 494 3.6  
2 LACT: 30427 1505 4.9 1079 3.5 KG  
Progeny Data: 0EX 2VG 0GP 0G 0F  
2 DAUS ME AVG: 15006 628 4.2 524 3.5  
AVG BCA: M284 F322 P317





**Welcome Mogul *Patt's***  
 GTPI 2551 | GPA LPI 3396 | DGV 3592  
**Dam**

Photo: Vicki Fletcher

**5A**

**LEJEUNE KINGBOY PIPPA**

HOCANF109211863 ET B:2014 Sep 11  
 CAN-GPA Nov\*14 GPA LPI+3482/65%  
 KG M+2241 F+97 %F+0.13  
 SCS 2.65 P+85 %P+0.11  
 CAN-GPA Nov\*14 64%Rel Conf+12  
 MS+11 F&L+10 DS+7 R+3

GPA LPI 3482 DGV 3550	
GTPI 2527 \$883NM 5.1PL 1.2DPR	
2319M 89F 0.01%F 79P 0.03%P 2.74SCS	
GPTAT+2.67 2.12UDC 2.13FLC (11/14)	

Consigned by:  
 LEJEUNE HOLSTEINS  
 Tel: 418-855-5317 Fax: 418-855-2610  
 ROCKYMOUNTAIN HOLSTEINS  
 Tel: 403-932-3793

4th-6th Maternal Dam  
 WELCOME OMAN PENELOPE-ET VG-85-2YR-USA  
 WELCOME AARON PENEL VG-87-3YR-USA  
 WELCOME MERRILL PERKY-ET VG-85-5YR-USA

**MORNINGVIEW MCC KINGBOY-ET PB**  
 HOUSAM72044077 \*CVF\*BYF\*BLF\*DPF ET  
 CAN-GPA Aug\*14 71%Rel GPA LPI+3272/67%  
 KG M+1835/96% F+72/97% %F+0.03  
 SCS 2.71 P+66/98% %P+0.05  
 CAN-GPA Aug\*14 66%Rel Conf+16  
 MS+15 F&L+8 DS+11 R+4

**DE-SU BKM MCCUTCHEN 1174-ET PB**  
 HOUSAM69990138 \*CVF\*BYF\*BLF\*DPF ET  
 VG-88-1YR-USA  
 CAN-GPA Aug\*14 76%Rel GPA LPI+3178/72%  
 KG M+1455 F+70 %F+0.15 P+60 %P+0.13  
 CAN-GPA Aug\*14 72%Rel Conf+15

**MORNINGVIEW SUPER MEGAN-ET PB**  
 HOUSAF68654508 \*BYF ET

**WELCOME MOGUL PATTS-ET PB**  
 HO840F3010945882 ET B:2012 Nov 09  
 CAN-GPA Aug\*14 70%Rel GPA LPI+3396/66%  
 KG M+1932/98% F+108/99% %F+0.34  
 SCS 2.54 P+80/99% %P+0.16  
 CAN-GPA Aug\*14 65%Rel Conf+8/92%  
 MS+8 F&L+11 DS+0 R+1

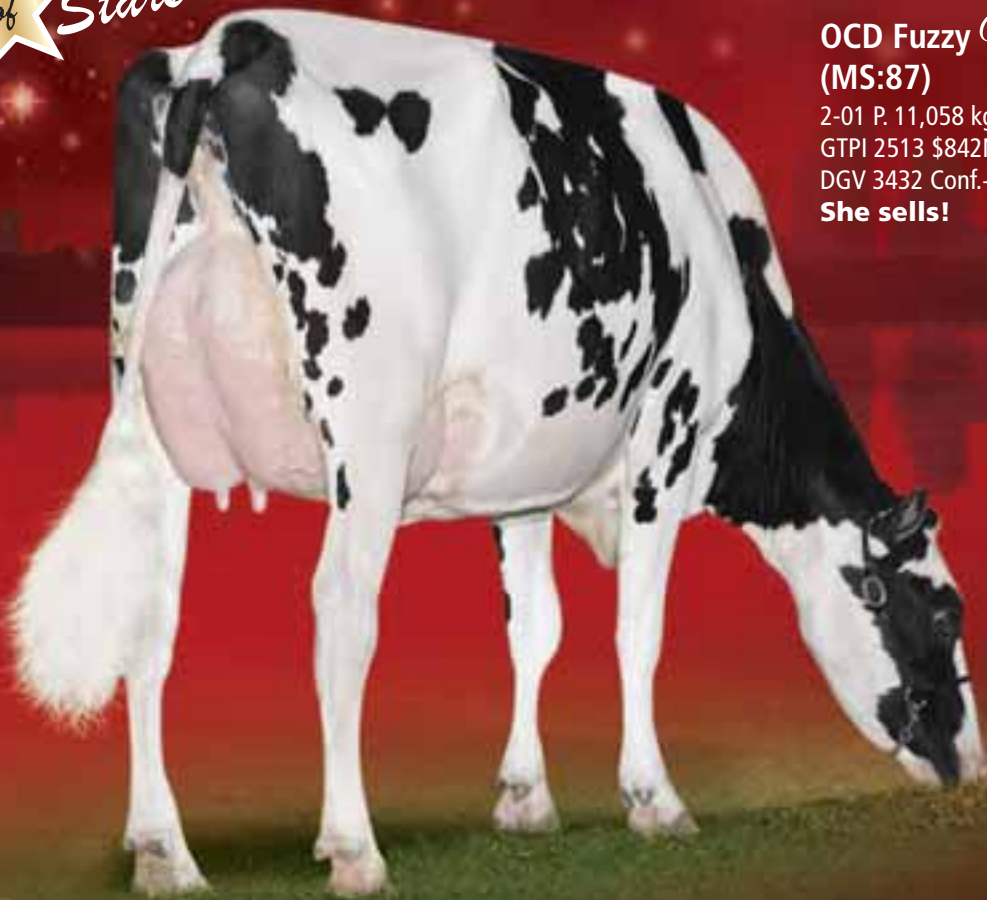
**MOUNTFIELD SSI DCY MOGUL-ET PB**  
 HO840M3006972816 \*CVF\*RDF\*BYF\*BLF\*DPF ET  
 CAN-GPA Aug\*14 76%Rel GPA LPI+3100/72%  
 KG M+1443 F+83 %F+0.28 P+55 %P+0.08  
 CAN-GPA Aug\*14 71%Rel Conf+11

**WELCOME BOOKEM PAISLEY-ET PB**  
 HO840F3007677709  
 VG-86-2YR-USA



**Welcome Bookem *Paisley*-ET**  
**VG-86 2Yr**  
**2<sup>nd</sup> Dam**

**WELCOME JOSE PANSEY-ET PB**  
 HO840F3001667117  
 VG-86-2YR-USA  
 02-03 305 9698 459 4.7 369 3.8  
 365 11109 538 4.8 431 3.9  
 1 LACT: 13617 688 5.1 540 4.0 KG



OCD Fuzzy Navel-ET VG 2Yr  
(MS:87)

2-01 P. 11,058 kg 4.2% 3.0% (286-319-266)  
GTPi 2513 \$842NM | GPA LPI 3292 Conf.+13  
DGV 3432 Conf.+14

She sells!

Photo: Patty Jones

6

OCD MOGUL FUZZY NAVEL-ET

HO840F3009533390 ET B:2012 Jul 02  
VG-85-2YR-CAN  
MS:87(FA:7 RAH:8 RAW:7) F&L:85 DS:83 R:85  
CAN-GPA Aug\*14 71%Rel GPA LPI+3292/68%  
KG M+1853/98% F+96/99% %P+0.26  
SCS 2.89 P+67/99% %P+0.06  
CAN-GPA Aug\*14 67%Rel Conf+13/99%  
MS+11 F&L+13 DS+6 R+2

GPA LPI 3292 Conf.+13 DGV 3432 Conf.+14	
GTPi 2513 \$842NM 5.1PL 1.1DPR	
1847M 95F 0.1%F 59P 0.01%P 2.85SCS	
GPTAT+3.38 2.92UDC 3.06FLC (08/14)	

4th-9th Maternal Dam  
MARKWELL OUTSIDE FINESSE-ET EX-90-6YR-USA 13\*  
MS MARKWELL RUDLP RARITY-ET VG-88-5YR-USA  
MARKWELL THOR RENEE-ET VG-87-3YR-CAN 7\*  
MARKWELL BSTAR E RAVEN-ET EX-95-3E-USA 5\*  
MARKWELL MARK ELITE EX-92-4E-USA 3\*  
ROCKALLI MARS EMILY EX-94-4E-USA

Consigned by:  
CHARACTER HOLSTEINS  
Tel: 519-270-3324

One of the highest GTPi cows in the World !!!

Fresh Aug. 22, 2014



6A

MOUNTFIELD SSI DCY MOGUL-ET PB

HO840M3006972816 \*CVF\*RDF\*BYF\*BLF\*DPF ET  
CAN-GPA Aug\*14 76%Rel GPA LPI+3100/72%  
KG M+1443/91% F+83/98% %P+0.28  
SCS 2.69 P+55/96% %P+0.08  
CAN-GPA Aug\*14 71%Rel Conf+11  
MS+13 F&L+9 DS+2 R+3  
Progeny Data: 4 Daus: 50% GP+  
0EX 0VG 2GP 2G 0F

OCD MAN-O-MAN FANTOM-ET PB

HO840F3006989186 ET B:2010 Sep 27  
EX-90-3YR-USA  
GMACE Aug\*14 74%Rel GMLPI+2951/71%  
KG M+1167/89% F+98/99% %P+0.52  
SCS 3.14 P+58/99% %P+0.19  
GMACE Aug\*14 71%Rel Conf+9/95%  
MS+5 F&L+9 DS+8 R+1  
01-10 305 11018 459 4.2 365 3.3  
1 LACT: 11018 459 4.2 365 3.3 KG

OCD-Man-O-Man Fantom-ET EX

1-10 11,018 4.2% 459 3.3% 365

Dam

LONG-LANGS OMAN OMAN-ET PB  
HOUSAM135746776 \*CVF\*BYF\*BLF ET  
VG-85-4YR-USA GM\*10 EXTRA\*12  
CAN-GEVB Aug\*14 99%Rel GLPI+2926/98%  
KG M+955 F+65 %F+0.31 P+71 %P+0.34  
CAN-GEVB Aug\*14 98%Rel Conf+8  
LARS-ACRES FELIC FORGIVE-ET PB  
HOUSAF65504015 ET  
EX-90-4YR-USA DOM  
02-01 285 7085 291 4.1 242 3.4  
03-01 305 12683 506 4.0 397 3.1  
04-00 305 12746 512 4.0 414 3.2  
365 14424 590 4.1 469 3.3  
3 LACT: 34895 1419 4.1 1134 3.2 KG

PROGENESIS  
CAMARO FLO

CANF12038932 B:2014 Jul 02  
CAN-GPA Aug\*14 GPA LPI +3335  
KG M+1653 F+73 %F+0.10 P+64 %P+0.08  
CAN-GPA Aug\*14 Conf+15  
MS+14 F&L+14 DS+5 R+2  
Sire: STANTONS CAMARO  
CANM11596115 VG-85-1YR-CAN  
Dam: OCD MOGUL FUZZY NAVEL-ET  
840F3009533390

#1 GPA LPI Camaro  
daughter in the World (08/14)

GPA LPI 3335 Conf.+15 DGV 3408 Conf.+16	
GTPi 2518 \$881NM 7.5PL 1.9DPR	
1486M 70F 0.06%F 51P 0.02%P 2.74SCS	
GPTAT+3.08 2.99UDC 2.83FLC (08/14)	

PICSTON SHOTTLE-ET PB  
HOGBRM598172 \*CVF\*BYF\*BLF\*MFF ET  
EX-96-7YR-GBR EXTRA\*09 GM\*10

MARKWELL DURHAM FELICE PB  
HOUSAF132824873 \*CVF  
EX-92-4YR-USA  
03-10 305 13132 507 3.9 421 3.2  
2 LACT: 31983 1190 3.7 1071 3.3 KG



Photo: Vicki Fletcher

8

**Larcrest *Cherish* -ET VG-85 2Yr**  
 GPA LPI 3127 | DGV 3143 | GTPI 2401  
 Fresh Mogul x Crimson x Cosmopolitan  
**She sells!**

**LARCREST CHERISH-ET**

VG-85-2YR-CAN  
 MS:85 (FA:8 RAH:7 RAW:5) F&L:85 DS:85 R:85  
 CAN-GPA Aug\*14 72%Rel GPA LPI+3127/69%  
 KG M+878/81% F+94/99% %F+0.59  
 SCS 2.61 P+53/98% %P+0.24  
 CAN-GPA Aug\*14 68%Rel Conf+10/97%  
 MS+9 F&L+9 DS+3 R+1

GPA LPI 3127 DGV 3143	
GTPI 2401 \$791NM 4.2PL 1.4DPR	
921M 88F 0.21%F 51P 0.09%P 2.64SCS	
GPTAT+2.72 2.2UDC 2.99FLC (08/14)	

Consigned by:  
 SYNDICAT ALPHAGEN  
 Tel: 819-664-9192 Fax: 819-595-1111

4th-6th Maternal Dam  
 LARCREST JUROR CHANEL EX-93-3E-USA  
 LARCREST LINDY CHANDRA VG-85-3YR-USA  
 LARCREST INSPIRATION CARLY VG-87-6YR-USA

**Fresh July 28, 2014**  
**Will be classified before the sale**  
**Daughters x Jetset at 2538 GTPI & Halogen at 2499 GTPI**

**MOUNTFIELD SSI DCY MOGUL-ET PB**  
 HO840M3006972816 \*CVF\*RDF\*BYF\*BLF\*DPF ET  
 CAN-GPA Aug\*14 76%Rel GPA LPI+3100/72%  
 KG M+1443/91% F+83/98% %F+0.28  
 SCS 2.69 P+55/96% %P+0.08  
 CAN-GPA Aug\*14 71%Rel Conf+11  
 MS+13 F&L+9 DS+2 R+3  
 Progeny Data: 2 Daus: 0% GP+  
 0EX 0VG 0GP 2G 0F

**COYNE-FARMS DORCY-ET PB**  
 HOUSAM139005002 \*BYC\*CVF\*BLF ET  
 GMACE Aug\*14 95%Rel GMLPI+2874/91%  
 KG M+1473 F+41 %F-0.14 P+45 %P-0.03  
 GMACE Aug\*14 88%Rel Conf+11

**MOUNTFIELD MARSH MAXINE-ET PB**  
 HOUSAF62784081 ET  
 VG-88-2YR-USA DOM  
 02-03 159 6496 277 4.3 218 3.4  
 1 LACT: 6496 277 4.3 218 3.4 KG

**LARCREST CRIMSON-ET PB**  
 HOUSAF53452457 \*BYF ET B:2007 Jun 27  
 EX-92-2E-USA DOM  
 GMACE Aug\*14 86%Rel GMLPI+3055/83%  
 KG M+794/78% F+89/99% %F+0.58  
 SCS 2.59 P+55/98% %P+0.28  
 GMACE Aug\*14 83%Rel Conf+12/99%  
 MS+8 F&L+8 DS+6 R+3  
 02-02 305 13975 673 4.8 524 3.7  
 05-02 305 18207 987 5.4 666 3.7  
 365 21042 1110 5.3 775 3.7  
 2 LACT: 54740 2697 4.9 2085 3.8 KG  
 Progeny Data: 0EX 1VG 1GP 0G 0F  
 1 DAUS ME AVG: 15773 679 4.3 518 3.3  
 AVG BCA: M298 F348 P313

**RAMOS PB**  
 HODEUM253642 \*BYC\*CVF\*BLF  
 CAN-GEBV Aug\*14 99%Rel GLPI+2386/99%  
 KG M+110 F+25 %F+0.21 P+17 %P+0.13  
 CAN-GEBV Aug\*14 99%Rel Conf+2

**LARCREST COSMOPOLITAN PB**  
 HOUSAF52475668  
 VG-87-3YR-USA DOM GMD 11\*(0/55)  
 02-04 305 12460 509 4.1 450 3.6  
 365 14030 572 4.1 508 3.6  
 1 LACT: 17341 727 4.2 625 3.6 KG  
 Progeny Data: 0EX 2VG 0GP 0G 0F  
 2 DAUS ME AVG: 17467 675 3.9 533 3.1  
 AVG BCA: M330 F346 P322



**Larcrest *Crimson* EX-92 2E**  
 Ramos from Cosmopolitan  
**Dam**

**LARCREST OSIDE CHAMPAGNE-TW PB**  
 HOUSAF51449617 MB  
 EX-90-8YR-USA GMD DOM  
 02-03 305 11245 499 4.4 386 3.4  
 365 13204 600 4.5 489 3.7  
 4 LACT: 48032 2287 4.8 1681 3.5 KG



Photo: Patty Jones


**Venture Mcutchen *Satin P***  
 GPA LPI 3062 Conf.+14 | DGV 3143 Conf.+15  
 GTPI 2239  
**Dam**

**48**

**KOOPYCREST CHAMP SAHARA PP**

HOCANF12152132 \*POS\*CVF\*RDF ET B:2014 Sep 29  
 CAN-GPA Nov\*14 GPA LPI+2899/63%  
 KG M+290 F+50 %F+0.39  
 SCS 2.59 P+26 %P+0.16  
 CAN-GPA Nov\*14 62%Rel Conf+16  
 MS+16 F&L+7 DS+7 R+0

**Homozygous Polled, CVF**

GTPI 2154 \$519NM 3.7PL 1.2DPR	
194M 42F 0.14%F 22P 0.06%P 2.67SCS	
GPAT+3.31 3.33UDC 1.68FLC (11/14)	

Consigned by:  
 SHAWN KOOPMANS  
 Tel: 613-961-9558

4th-8th Maternal Dam  
 HICKORYMEA-I I AD SWEET P RED GP-84-3YR-CAN 1\*  
 HICKORYMEA AIRLINER TASHA P EX-90-5YR-USA 1\*  
 HICKORYMEA GATOR TANYA P EX-91-2E-USA  
 HICKORYMEA HOUDINI TABBI EX-90-3E-USA  
 HICKORYMEA ART PENNY VG-85-5YR-USA

**ALL-RIEHL LADDS CHAMP-ET PB**

HOUSAM64010329 \*POC\*RDC\*CVC\*BYF\*BLF\*DPF ET  
 CAN-GPA Aug\*14 69%Rel GPA LPI+2825/66%  
 KG M+765/63% F+33/68% %F+0.06  
 SCS 2.54 P+43/89% %P+0.17  
 CAN-GPA Aug\*14 65%Rel Conf+14  
 MS+13 F&L+5 DS+5 R+7

**TIGER-LILY LADD P-RED-ET PB**

HOUSAM69405976 R&W \*POR\*BYF ET  
 CAN-GPA Aug\*14 74%Rel GPA LPI+2625/71%  
 KG M+117 F+31 %F+0.27 P+33 %P+0.28  
 CAN-GPA Aug\*14 70%Rel Conf+10

**TRULEA SUPER CHARITY7296-ET PB**  
 HOUSAF69777492

**VENTURE MCCUTCHEN SATIN P PB**

HOCANF11533378 \*POR ET B:2013 Feb 11  
 CAN-GPA Aug\*14 69%Rel GPA LPI+3062/66%  
 KG M+905/82% F+66/98% %F+0.31  
 SCS 2.75 P+41/94% %P+0.11  
 CAN-GPA Aug\*14 65%Rel Conf+14/99%  
 MS+13 F&L+12 DS+9 R+1

**DE-SU BKM MCCUTCHEN 1174-ET PB**

HOUSAM69990138 \*CVF\*BYF\*BLF\*DPF ET  
 VG-88-1YR-USA  
 CAN-GPA Aug\*14 76%Rel GPA LPI+3178/72%  
 KG M+1455 F+70 %F+0.15 P+60 %P+0.13  
 CAN-GPA Aug\*14 72%Rel Conf+15

**VENTURE SHOTTBOLT SATIN P PB**  
 HOCANF11306299 \*POR\*RDF ET



**Venture Shottbolt *Satin P***  
 Polled | GPA LPI 2605 DGV 2735  
**2<sup>nd</sup> Dam**

**VENTURE GOLDWYN SOUP P PB**

HOCANF10869906 \*POR\*RDC  
 GP-83-3YR-CAN  
 01-11 305 9997 470 4.7 352 3.5  
 365 11621 545 4.7 413 3.6  
 BCA 266 333 291  
 1 LACT: 13808 651 4.7 502 3.6 KG  
 AVG BCA: M266(+42) F333(+120) P291(+67)  
 1 Superior Lactation  
 2ND SR.CALF 2010 PRINCE EDWARD



Photo: John Erbsen

**Roylane Shot *Mindy* 2079-ET**  
**VG-86**

2-02 13,032 kg 4.4% 573 3.5% 462  
9 sons over 2300 GTPI  
**2<sup>nd</sup> Dam**

**57**

**S-S-I DAVINCI 7739 10400-ET**

HO840F3014259001 B:2014 Jan 02  
CAN-GPA Aug\*14 68%Rel GPA LPI+3404/65%  
KG M+2137/99% F+110/99% %F+0.29  
SCS 2.66 P+94/99% %P+0.24  
CAN-GPA Aug\*14 64%Rel Conf+8/92%  
MS+7 F&L+7 DS+2 R+2

GPA LPI 3404 2137M 94P	
DGV 3487 2381M 103P	
GTPI 2355 \$783NM 3PL 0.2DPR	
1893M 97F 0.1%F 77P 0.08%P 2.69SCS	
GPTAT+2.08 1.34UDC 1.9FLC (08/14)	

4th-10th Maternal Dam  
SEAGULL-BAY MANAT MIRAGE-ET EX-90-4YR-USA  
LYNMEAD CELSIUS MINNOW-ET EX-91-2E-USA  
CMV MELWOOD MINDY-ET VG-85-2YR-USA  
BRIARPATCH-R MISTY-ET VG-85-3YR-USA  
RILARA MARS LAS RAVENA EX-91-8YR-USA  
RILARA HAVEN CHARMING LAS VG-87-5YR-USA  
RAG APPLE LOCUST-GROVE CHARM VG-86-5YR-USA

Consigned by:  
SELECT SIREs  
Tel: 614 264-5980

**DE-SU MG DAVINCI 11288-ET PB**  
HOUSAM70626040 \*CVF\*BYF\*BLF\*DPF ET  
CAN-GPA Aug\*14 71%Rel GPA LPI+3396/67%  
KG M+1653/94% F+108/99% %F+0.45  
SCS 2.66 P+78/99% %P+0.23  
CAN-GPA Aug\*14 66%Rel Conf+12  
MS+12 F&L+8 DS+5 R+2

**MOUNTFIELD SSI DCY MOGUL-ET PB**  
HO840M3006972816 \*CVF\*RDF\*BYF\*BLF\*DPF ET  
CAN-GPA Aug\*14 76%Rel GPA LPI+3100/72%  
KG M+1443 F+83 %F+0.28 P+55 %P+0.08  
CAN-GPA Aug\*14 71%Rel Conf+11

**COYNE-FARMS DORCY-ET PB**  
HOUSAM139005002 \*BYC\*CVF\*BLF ET

**MOUNTFIELD MARSH MAXINE-ET PB**  
HOUSAF62784081 ET  
VG-88-2YR-USA DOM

**DE-SU WATSON PB**  
HOUSAM64700377 \*CVF\*RDF\*BYF\*BLF\*DPF  
VG-85-3YR-USA

**PINE-TREE MISSY MIRANDA-ET PB**  
HOUSAF61733095 ET  
VG-86-4YR-USA DOM

**S-S-I PEOTI MASH 7739-ET PB**  
HO840F3008897752 B:2011 Nov 10  
GP-83-2YR-USA  
1-11 343 12255 KG 578 4.7 423 3.5 INC.  
GMACE Aug\*14 73%Rel GPA LPI+3143/70%  
KG M+1713/97% F+93/99% %F+0.28  
SCS 2.83 P+78/99% %P+0.22  
CAN-GPA Aug\*14 69%Rel Conf+6/83%  
MS+7 F&L+4 DS-2 R-1

**WELCOME PEOTI-ET PB**  
HOUSAM69207565 \*CVF\*RDF\*BYF\*BLF\*DPF ET  
GMACE Aug\*14 85%Rel GMLPI+2920/80%  
KG M+1091 F+76 %F+0.33 P+73 %P+0.37  
GMACE Aug\*14 80%Rel Conf+6

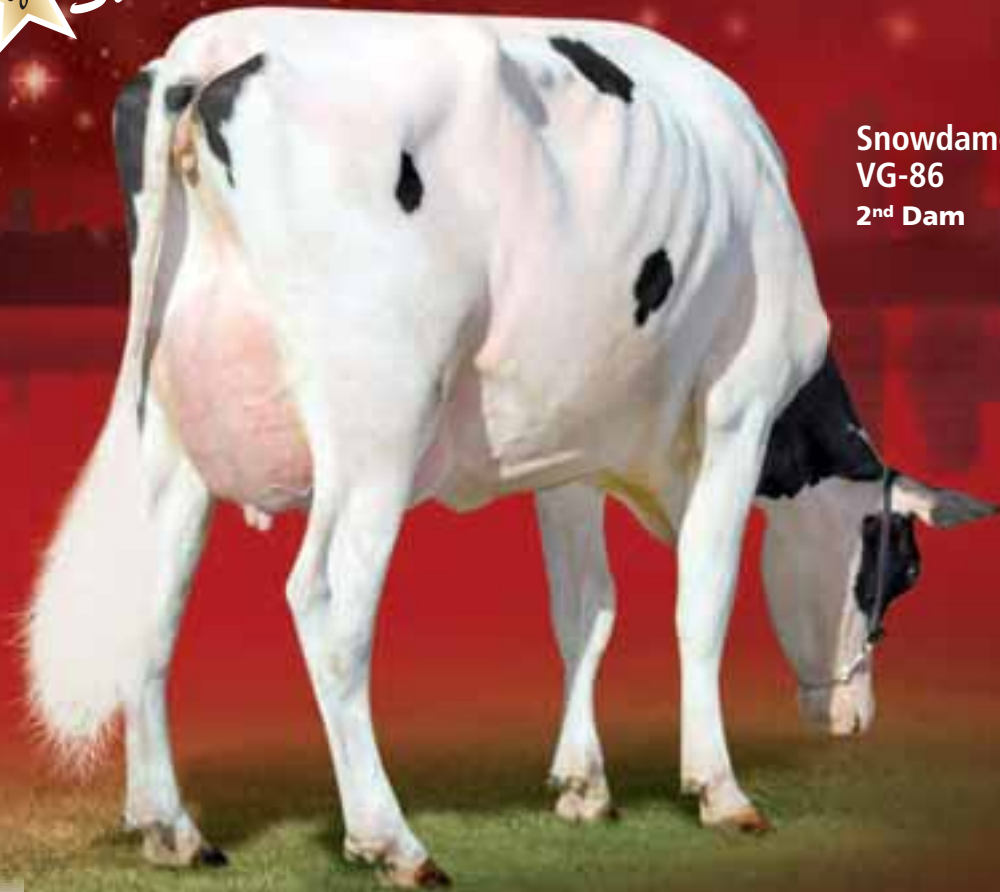
**LONG-LANGS OMAN OMAN-ET PB**  
HOUSAM135746776 \*CVF\*BYF\*BLF ET  
VG-85-4YR-USA GM\*10 EXTRA\*12

**WELCOME GOLDWYN PENYA PB**  
HOUSAF62577996  
VG-89-2YR-USA DOM GMD

**PICSTON SHOTTLE-ET PB**  
HOGBRM598172 \*CVF\*BYF\*BLF\*MFF ET  
EX-96-7YR-GBR EXTRA\*09 GM\*10

**ROYLANE SHOT MINDY 2079-ET PB**  
HOUSAF66782907 ET  
VG-86-3YR-USA  
02-02 305 13032 573 4.4 462 3.5  
03-07 77 3670 215 5.9 115 3.1  
2 LACT: 16702 788 4.7 577 3.5 KG

**SEAGULL-BAY OMAN MIRROR-ET PB**  
HOUSAF62115945 ET  
VG-86-3YR-USA DOM  
03-00 305 14656 635 4.3 521 3.6  
365 16525 728 4.4 591 3.6  
2 LACT: 32663 1426 4.4 1169 3.6 KG



Snowdame Planet *Lauren*  
VG-86  
2<sup>nd</sup> Dam

Photo: Jenny Thomas

58

**S-S-I MIDNGHT 2411 10458-ET**

HO840F3014334976 B:2014 Jan 26  
CAN-GPA Aug\*14 69%Rel GPA LPI+3229/65%  
KG M+2401/99% F+80/99% %F-0.08  
SCS 2.83 P+81/99% %P+0.02  
CAN-GPA Aug\*14 64%Rel Conf+11/98%  
MS+8 F&L+11 DS+7 R+9

GPA LPI 3229 2401M 81P DGV 3301 2618M 87P

GTPI 2374 \$774NM 5.2PL 0.5DPR

2351M 78F -0.03%F 72P 0%P 2.82SCS

GPTAT+2.51 1.64UDC 1.88FLC (08/14)

4th-9th Maternal Dam  
VANRIDGE OUTSIDE ELEVATOR EX-90-3E-CAN 4\*  
VANRIDGE PRELUDE ELLEN VG-85-4YR-CAN 3\*  
LADY BLACK EVA-ET VG-88-4YR-CAN 3\*  
HOWARD-HOME VALIANT EVA EX-94-2E-USA  
HOWARD-HOME ASTRONAUT EVA EX-92-4E-USA  
ELLA GRAY VIEW ANN EX-93-4E-USA

Consigned by:  
SELECT SIRES  
Tel: 614 264-5980

**S-S-I EPIC MIDNIGHT-ET PB**

HO840M3009554689 \*CVF\*BYF\*BLF\*DPF ET  
CAN-GPA Aug\*14 74%Rel GPA LPI+3172/70%  
KG M+1898/97% F+80/98% %F+0.08  
SCS 2.75 P+72/99% %P+0.09  
CAN-GPA Aug\*14 68%Rel Conf+8  
MS+7 F&L+8 DS+3 R+5

**GENERATIONS EPIC PB**

HOCANM11104016 \*CVF\*BYF\*BLF\*DPF ET  
EX-94-CAN  
GMACE Aug\*14 88%Rel GPA LPI+2744/80%  
KG M+1991 F+63 %F-0.14 P+49 %P+0.05  
CAN-GPA Aug\*14 74%Rel Conf+11  
ROYLANE SOCRA MIRA 1760-ET PB  
HOUSAF64966736 ET

**CHARLESDALE SUPERSTITION-ET PB**

HOUSAM62065919 \*CVF\*RDF\*BYF\*BLF\*DPF ET  
GM\*12  
TRAMILDA-N BAXTER EMILY-ET PB  
HOUSAF139232811 ET  
VG-85-2YR-CAN 2\*(0/12)  
VELVET-VIEW-KJ SOCRATES-ET PB  
HOUSAM133126053 \*CVF\*RDF\*BLF\*DPF ET  
EX-94-5YR-USA GM\*10

**SEAGULL-BAY OMAN MIRROR-ET PB**

HOUSAF62115945 ET  
VG-86-3YR-USA DOM

**HAPPYDANNY SNOW STORM-ET PB**

HOUSAF70840483 ET B:2011 Sep 04  
VG-85-2YR-CAN  
MS:86(FA:8 RAH:8 RAW:7) F&L:85 DS:87 R:81  
CAN-GEBV Aug\*14 74%Rel GLPI+2999/71%  
KG M+2081/99% F+64/98% %F-0.08  
SCS 2.85 P+67/99% %P-0.01  
CAN-GEBV Aug\*14 70%Rel Conf+12/99%  
MS+10 F&L+12 DS+8 R+8  
02-02 305 14059 522 3.7 441 3.1  
312 14352 533 3.7 451 3.1  
BCA 337 337 332  
1 LACT: 14352 533 3.7 451 3.1 KG  
AVG BCA: M337(+59) F337(+37) P332(+57)  
1 Superior Lactation

**FLEVO GENETICS SNOWMAN PB**

HONLDM388965513 \*CVF\*BLF  
EXTRA\*14  
CAN-GEBV Aug\*14 97%Rel GLPI+2969/93%  
KG M+1991 F+63 %F+0.01 P+62 %P-0.03  
CAN-GEBV Aug\*14 95%Rel Conf+14  
SNOWDAME PLANET LAUREN PB  
HOCANF10896140 ET  
VG-86-3YR-USA  
Progeny Data: 0EX 1VG 0GP 0G 0F  
1 DAUS ME AVG: 17837 658 3.7 549 3.1  
AVG BCA: M337 F337 P332

**O-BEE MANFRED JUSTICE-ET PB**

HOUSAM122358313 \*CVF\*RDF\*BLF\*DPF ET  
EX-94-7YR-USA SP\*07 GM  
BROEKS MBM ELSA PB  
HONLDF381135900 ET  
EX-90-5YR-NLD 4\*(15/8)  
ENSENADA TABOO PLANET-ET PB  
HOUSAM60597003 \*CVF\*RDF\*BYF\*BLF\*DPF ET  
EX-90-4YR-USA GM\*11 EXTRA\*12

**SNOWDAME GOLDWYN ELEXUS PB**

HOCANF7874707 ET  
EX-90-CAN  
03-04 305 13054 502 3.8 426 3.3  
310 13245 509 3.8 433 3.3  
BCA 293 302 294  
3 LACT: 39678 1591 4.0 1319 3.3 KG  
AVG BCA: M274(+58) F290(+65) P277(+66)  
2 Superior Lactations  
Progeny Data: 0EX 3VG 8GP 0G 0F  
9 DAUS ME AVG: 11164 426 3.8 354 3.2  
AVG BCA: M211 F218 P214



**Alphagen Jolicap Epic *Dalia***  
**VG-86 2Yr (MS:87)**  
 GPA LPI 2919 | DGV 3021 | GTPI 2257  
**She sells!**

Photo: Marc Boisvert

**59**

**ALPHAGEN JOLICAP EPIC DALIA**

VG-86-2YR-CAN  
 MS:87 (FA:6 RAH:8 RAW:8) F&L:84 DS:86 R:86  
 CAN-GPA Aug\*14 73%Rel GPA LPI+2919/69%  
 KG M+1250/91% F+38/86% %F-0.09  
 SCS 2.71 P+56/98% %P+0.13  
 CAN-GPA Aug\*14 66%Rel Conf+13/99%  
 MS+10 F&L+10 DS+8 R+7

GPA LPI 2919 DGV 3021	
GTPI 2257 \$661NM 5.1PL 1.5DPR	
1370M 41F -0.03%F 51P 0.03%P 2.61SCS	
GPTAT+2.64 1.97UDC 2.28FLC (08/14)	

4th-7th Maternal Dam  
 RONELEE RUDOLPH DIMPLE EX-93-2E-USA  
 SELECT MARK DOLLY EX-95-4E-USA  
 SELECT SOUTHWIND DINAH EX-91-2E-USA  
 SELECT MARS TONY DIANA VG-86-4YR-USA

Consigned by:  
 FERME PARILE INC  
 Tel: 418-259-7564 Fax: 418-259-7564  
 FERME LEPACHA INC  
 Tel: 819-665-6660

**Fresh Sept. 24, 2014**  
**Will be classified before the sale.**

**GENERATIONS EPIC PB**

HOCANM11104016 \*CVF\*BYF\*BLF\*DPF ET  
 EX-94-CAN  
 F&L:93 DS:95 R:95  
 GMACE Aug\*14 88%Rel GPA LPI+2744/80%  
 KG M+1345/87% F+36/72% %F-0.14  
 SCS 2.91 P+49/93% %P+0.05  
 CAN-GPA Aug\*14 74%Rel Conf+11  
 MS+9 F&L+8 DS+7 R+7  
 Progeny Data: 122 Daus: 83% GP+  
 OEX 18VG 83GP 21G 0F

**CHARLESDALE SUPERSTITION-ET PB**  
 HOUSAM62065919 \*CVF\*RDF\*BYF\*BLF\*DPF ET  
 GM\*12  
 CAN-GEV Aug\*14 99%Rel GLPI+2573/97%  
 KG M+1829 F+14 %F-0.47 P+57 %P-0.03  
 CAN-GEV Aug\*14 97%Rel Conf+6  
**TRAMILDA-N BAXTER EMILY-ET PB**  
 HOUSAF139232811 ET  
 VG-85-2YR-CAN 2\*(0/12)  
 02-05 282 14037 584 4.2 481 3.4  
 BCA 344 381 367  
 1 LACT: 14037 584 4.2 481 3.4 KG

**ROCKYMOUNTAIN MANOMAN DIMPLE PB**

HOCANF10945230 ET B:2010 May 24  
 VG-86-2YR-CAN VG-87-2YR-USA  
 MS:87(FA:5 RAH:9 RAW:7) F&L:83 DS:86 R:87  
 CAN-GEV Aug\*14 77%Rel GLPI+2873/74%  
 KG M+634/71% F+46/92% %F+0.24  
 SCS 2.83 P+50/97% %P+0.27  
 CAN-GEV Aug\*14 74%Rel Conf+12/99%  
 MS+11 F&L+9 DS+6 R+5  
 02-00 285 8891 311 3.5 318 3.6  
 03-05 P303 11910 528 4.4 410 3.4  
 PBCA 245 292 265  
 2 LACT: 20739 837 4.0 726 3.5 KG  
 AVG BCA: M245 F292 P265  
 Progeny Data: 0EX 0VG 1GP 0G 0F  
 1 DAUS ME AVG: 10533 435 4.1 359 3.4  
 AVG BCA: M199 F223 P217

**LONG-LANGS OMAN OMAN-ET PB**  
 HOUSAM135746776 \*CVF\*BYF\*BLF ET  
 VG-85-4YR-USA GM\*10 EXTRA\*12  
 CAN-GEV Aug\*14 99%Rel GLPI+2926/98%  
 KG M+955 F+65 %F+0.31 P+71 %P+0.34  
 CAN-GEV Aug\*14 98%Rel Conf+8  
**RONELEE GOLDWYN DINAH-ET PB**  
 HOUSAF139413599 ET  
 VG-86-2YR-CAN  
 02-01 124 4064 156 3.8 126 3.1  
 1 LACT: 4064 156 3.8 126 3.1 KG  
 Progeny Data: 0EX 4VG 1GP 0G 0F  
 5 DAUS ME AVG: 12218 488 4.0 406 3.3  
 AVG BCA: M231 F250 P245



**RockyMountain Manoman *Dimple***  
**VG-87 2Yr**  
 7<sup>th</sup> gen. VG or EX from the Dabble & Domain family  
**Dam**

**RONELEE OUTSIDE DABBLE-ET PB**  
 HOUSAF134644585 \*CVF\*BYF\*BLF ET  
 EX-91-2E-USA DOM GMD 2\*(0/11)  
 05-03 305 17259 625 3.6 540 3.1  
 365 20199 731 3.6 634 3.1  
 3 LACT: 84247 3066 3.6 2706 3.2 KG  
 Progeny Data: 0EX 5VG 0GP 0G 0F  
 4 DAUS ME AVG: 14282 514 3.6 430 3.0  
 AVG BCA: M270 F263 P260





Mountfield Marsh *Maxime*  
2<sup>nd</sup> Dam

Photo: Jonh Erbsen

61

**MOUNTFIELD JBR MO-ET**

HOUSAF73664317 \*BLF\*DPF B:2014 Jul 29  
CAN-PA Aug\*14 36%Rel PA LPI+3117/34%  
KG M+1770/97% F+94/99% %F+0.28  
SCS 2.67 P+60/99% %P+0.02  
CAN-PA Aug\*14 34%Rel Conf+9/95%  
MS+9 F&L+6 DS+3 R-1

4th-8th Maternal Dam  
WESSWOOD-HC RUDY MISSY-ET EX-92-3E-USA  
WESSWOOD ELTON MIMI EX-90-5YR-USA  
WESSWOOD MANDINGO IVY VG-87-6YR-USA  
WESSWOOD ASTRO MATT ESTER VG-87-6YR-USA  
WESSWOOD BELL CLAUDETTE VG-87-USA

Consigned by:  
MOUNTFIELD FARMS  
Tel: 615-673-4470

GTPi 2459 \$906NM 6.3PL 2.3DPR	
1950M 96F 0.18%F 57P 0.09%P 2.59SCS	
GPTAT+2.06 1.70UDC 1.89FLC (08/14)	

**COYNE-FARMS JABIR-ET PB**

HOUSAM70801850 \*CVF\*BYF\*BLF\*DPF ET  
CAN-GPA Aug\*14 73%Rel GPA LPI+3249/69%  
KG M+1783/96% F+101/99% %F+0.33  
SCS 2.70 P+64/98% %P+0.06  
CAN-GPA Aug\*14 68%Rel Conf+8  
MS+7 F&L+9 DS+2 R-6

**MARBRI FACEBOOK PB**

HOCANM10847042 \*CVF\*RDF\*BYF\*BLF\*DPF ET  
EX-90-CAN  
GMACE Aug\*14 89%Rel GMLPI+3469/82%  
KG M+2256 F+124 %F+0.36 P+85 %P+0.12  
GMACE Aug\*14 81%Rel Conf+11  
**COYNE-FARMS FREDDIE JILL-ET PB**  
HOUSAF68677598 ET  
VG-85-2YR-USA  
02-00 305 13363 435 3.3 380 2.8  
365 15359 510 3.3 446 2.9  
1 LACT: 20131 676 3.4 603 3.0 KG

**MOUNTFIELD PT MATRONE-ET PB**

HOUSAF71259520 B:2012 Apr 17  
CAN-GPA Aug\*14 71%Rel GPA LPI+2977/67%  
KG M+1759/97% F+87/99% %F+0.22  
SCS 2.64 P+55/98% %P-0.02  
CAN-GPA Aug\*14 66%Rel Conf+10/97%  
MS+11 F&L+3 DS+4 R+4

**WELCOME SUPER PETRONE-ET PB**

HOUSAM69207641 \*CVF\*RDF\*BLF\*DPF ET  
CAN-GPA Aug\*14 77%Rel GPA LPI+2696/74%  
KG M+1223 F+54 %F+0.12 P+38 %P-0.02  
CAN-GPA Aug\*14 73%Rel Conf+6

**MOUNTFIELD MARSH MAXINE-ET PB**

HOUSAF62784081 ET  
VG-88-2YR-USA DOM  
02-03 159 6496 277 4.3 218 3.4  
1 LACT: 6496 277 4.3 218 3.4 KG



Pine-Tree Missy *Miranda*-ET VG-86  
3-08 365 16,125 kg 4.9% 784 3.9% 631  
3<sup>rd</sup> Dam

**PINE-TREE MISSY MIRANDA-ET PB**  
HOUSAF61733095 ET  
VG-86-4YR-USA DOM  
03-08 305 14052 695 4.9 545 3.9  
365 16125 785 4.9 178 1.1  
3 LACT: 55743 2511 4.5 2138 3.8 KG  
Progeny Data: 0EX 2VG 0GP 0G 0F  
2 DAUS ME AVG: 11803 518 4.4 414 3.5  
AVG BCA: M223 F266 P250



Photo: Beth Herges

**Mor-Yet Shottle Faith-ET EX**  
 4-05 13,912 kg 4.1% 568 3.4% 471  
**3<sup>rd</sup> Dam**

**70A**

**JEANLU BOMBERO FAITHFUL**

HOCANF109120752 ET B:2014 Sep 02  
 CAN-GPA Nov\*14 GPA LPI+3117/62%  
 KG M+1831 F+90 %F+0.23  
 SCS 2.47 P+58 %P-0.01  
 CAN-GPA Nov\*14 61%Rel Conf+10  
 MS+11 F&L+4 DS+2 R+6

GPA LPI 3117 DGV 3174	
GTPI 2480 \$910NM 6.8PL 0.7DPR	
2015M 92F 0.06%F 54P -0.02%P 2.48SCS	
GPTAT+2.74 2.80UDC 1.29FLC (11/14)	

**RICHMOND-FD EL BOMBERO-ET PB**  
 HOUSAM71637328 \*CVF\*RDF\*BYF\*BLF\*DPF\*CNF ET  
 VG-86-1YR-CAN  
 F&L:86 DS:87 R:86  
 CAN-GPA Aug\*14 70%Rel GPA LPI+3141/67%  
 KG M+1796/96% F+88/99% %F+0.23  
 SCS 2.61 P+61/98% %P+0.03  
 CAN-GPA Aug\*14 66%Rel Conf+12  
 MS+10 F&L+8 DS+6 R+4

**JEANLU MOGUL FANY PB**  
 HOCANF108042345 ET B:2013 Jan 02  
 CAN-GPA Aug\*14 69%Rel GPA LPI+2969/66%  
 KG M+1594/96% F+64/98% %F+0.06  
 SCS 2.55 P+47/96% %P-0.04  
 CAN-GPA Aug\*14 65%Rel Conf+11/98%  
 MS+14 F&L+7 DS+0 R+5

**Sells as Choice**

Consigned by:  
 FERME J.P. POULIN & FILS  
 Tel: 418-225-7753 Fax: 418-228-1225

4th-9th Maternal Dam  
 GBM ALLEN FABULOUS-ET EX-91-2E-USA  
 GBM DURHAM BC ANNABELL EX-90-3YR-USA  
 GBM CHARLES JANELLE EX-93-2E-USA  
 GBM VAL BLACKSTAR JEAN-ET EX-94-3E-USA  
 SYLVAN-DELL M C JANICE EX-91-USA 2E DOM  
 SYLVAN-DELL ATLAS JILL EX-90-USA 2E

**Full Brother at Semex with 2534 GTPI!**

**AMIGHETTI NUMERO UNO ET PB**  
 HOITAM17990915143 \*CVF\*BYF\*BLF\*DPF ET  
 EX-90-3YR-HUN  
 CAN-GPA Aug\*14 76%Rel GPA LPI+2968/73%  
 KG M+500 F+67 %F+0.48 P+34 %P+0.16  
 CAN-GPA Aug\*14 73%Rel Conf+12  
**RICHMOND-FD S BARBARA-ET PB**  
 HOUSAF69305043 \*BYF ET  
 VG-87-2YR-USA  
 02-04 233  
 1 LACT: 9870 385 3.9 276 2.8 KG

**MOUNTFIELD SSI DCY MOGUL-ET PB**  
 HO840M3006972816 \*CVF\*RDF\*BYF\*BLF\*DPF ET  
 CAN-GPA Aug\*14 76%Rel GPA LPI+3100/72%  
 KG M+1443 F+83 %F+0.28 P+55 %P+0.08  
 CAN-GPA Aug\*14 71%Rel Conf+11

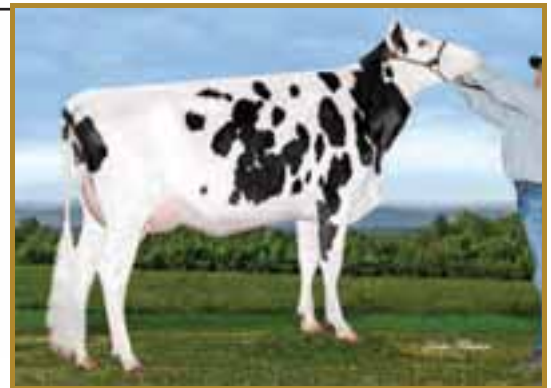
**SPEEK-NJ OBSERV FANDANGO-ET PB**  
 HOUSAF70219287 \*BRC ET  
 VG-86-2YR-CAN  
 02-01 305 11074 440 4.0 351 3.2  
 365 12774 512 4.0 410 3.2  
 BCA 284 306 283  
 1 LACT: 14958 605 4.0 485 3.2 KG  
 AVG BCA: M284(+53) F306(+61) P283(+46)

**70B**

**JEANLU BOMBERO FRENCHIE**

HOCANF109120747 ET B:2014 Sep 02  
 CAN-GPA Nov\*14 GPA LPI+3107/63%  
 KG M+1579 F+71 %F+0.14  
 SCS 2.47 P+51 %P+0.01  
 CAN-GPA Nov\*14 62%Rel Conf+11  
 MS+13 F&L+8 DS+3 R+4

GPA LPI 3107 DGV 3125	
GTPI 2459 \$863NM 6.9PL 1.8DPR	
1544M 69F 0.04%F 44P -0.01%P 2.44SCS	
GPTAT+2.85 2.05UDC 2.89FLC (11/14)	



**Speek-NJ Observ Fandango-ET**  
**VG-86 2Yr (MS:87)**  
**2<sup>nd</sup> Dam**

**MOR-YET SHOTTLE FAITH-ET PB**  
 HOUSAF64845075 \*BRC ET  
 EX-90-4YR-USA  
 01-11 305 12220 517 4.2 391 3.2  
 1 LACT: 21569 800 3.7 680 3.2 KG  
 Progeny Data: 0EX 1VG 0GP 0G 0F  
 1 DAUS ME AVG: 15032 597 4.0 468 3.1  
 AVG BCA: M284 F306 P283



**Misty Springs Larkin Red Bliss**  
2-03 365 18,112 kg 3.9% 3.4% (361-366-379)  
2<sup>e</sup> mère/2<sup>nd</sup> Dam

Photo: Marc Boisvert

**87**

**DUDOC EL BOMBERO BOBO**

HOCANF109148603 \*RDC\*BLF\*DPF ET B:2014 Aug 03  
CAN-GPA Oct\*14 GPA LPI+3360/62%  
KG M+1660 F+88 %F+0.27  
SCS 2.57 P+66 %P+0.12  
CAN-GPA Oct\*14 61%Rel Conf+13  
MS+13 F&L+12 DS+4 R+5

GPA LPI 3360 Conf.+13 DGV 3479 Conf.+14

GTP1 2558 \$926NM 6.7PL 0.8DPR   
1729M 89F 0.1%F 62P 0.04%P 2.55SCS  
GPTAT+3.20 2.75UDC 2.75FLC (10/14)

#2 RC in the World (10/14)

Consigned by:  
FERME DU DOC  
Tel: 418-455-1873 Fax: 418-926-2112

4th-10th Maternal Dam  
MISTY SPRINGS SHOTTLE BRENDA VG-85-2YR-CAN 2\*  
WEST PORT TALENT BURGETTE RED VG-86-3YR-CAN 6\*  
WEST PORT RUBENS BRILLIANT RED VG-88-5YR-CAN 13\*  
ALDONHILL BRILLANCE RED VG-88-7YR-CAN 9\*  
LYNLAND BLACKSTAR ANN VG-87-4YR-CAN 3\*  
MONTGROVE HY MAN ALICE VG-87-3YR-CAN 10\*  
SPRINGBRAE HY-MAN DOT EX-CAN

**RICHMOND-FD EL BOMBERO-ET PB**  
HOUSAM71637328 \*CVF\*RDF\*BYF\*BLF\*DPF\*CNF ET  
VG-86-1YR-CAN  
F&L:86 DS:87 R:86  
CAN-GPA Aug\*14 70%Rel GPA LPI+3141/67%  
KG M+1796/96% F+88/99% %F+0.23  
SCS 2.61 P+61/98% %P+0.03  
CAN-GPA Aug\*14 66%Rel Conf+12  
MS+10 F&L+8 DS+6 R+4

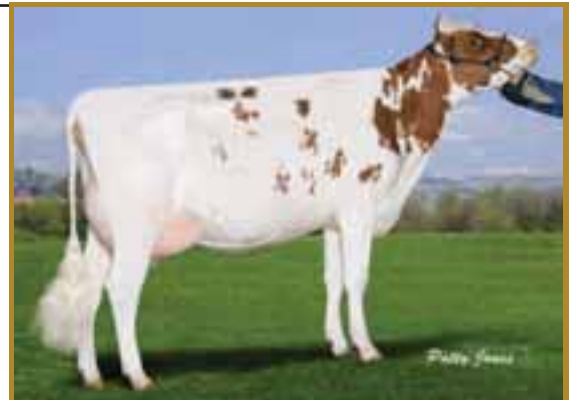
**AMIGHETTI NUMERO UNO ET PB**  
HOITAM17990915143 \*CVF\*BYF\*BLF\*DPF ET  
EX-90-3YR-HUN  
CAN-GPA Aug\*14 76%Rel GPA LPI+2968/73%  
KG M+500 F+67 %F+0.48 P+34 %P+0.16  
CAN-GPA Aug\*14 73%Rel Conf+12  
**RICHMOND-FD S BARBARA-ET PB**  
HOUSAF69305043 \*BYF ET  
VG-87-2YR-USA  
02-04 233  
1 LACT: 9870 385 3.9 276 2.8 KG

**DUDOC MOGUL BLESSURE PB**  
HOCANF107182986 \*RDC B:2012 Nov 16  
CAN-GPA Aug\*14 67%Rel GPA LPI+3069/64%  
KG M+1344/93% F+58/97% %F+0.09  
SCS 2.77 P+56/98% %P+0.11  
CAN-GPA Aug\*14 63%Rel Conf+11/98%  
MS+11 F&L+14 DS+3 R+7

**MOUNTFIELD SSI DCY MOGUL-ET PB**  
HO840M3006972816 \*CVF\*RDF\*BYF\*BLF\*DPF ET  
CAN-GPA Aug\*14 76%Rel GPA LPI+3100/72%  
KG M+1443 F+83 %F+0.28 P+55 %P+0.08  
CAN-GPA Aug\*14 71%Rel Conf+11

Due March 2015

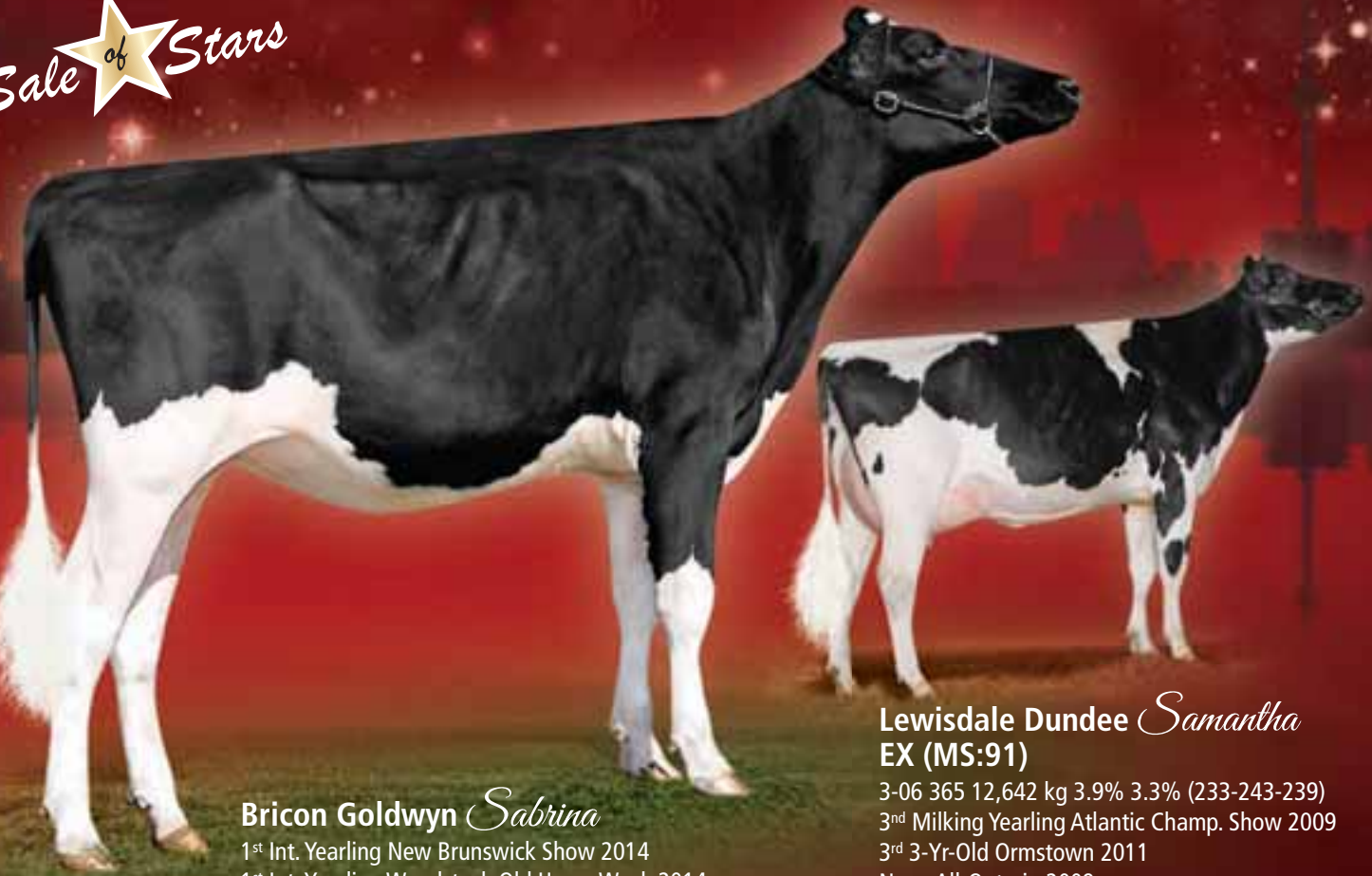
**MISTY SPRINGS LARKIN RED BLISS PB**  
HOCANF11113983 R&W ET  
GP-84-2YR-CAN  
02-03 305 15290 579 3.8 512 3.3  
365 18112 699 3.9 613 3.4  
BCA 361 366 379  
03-11 P 80 6197 282 4.6 218 3.5  
2 LACT: 24626 962 3.9 843 3.4 KG  
AVG BCA: M361(+112) F366(+102) P379(+123)  
1 Superior Lactation  
Progeny Data: 0EX 0VG 0GP 1G 0F



**Misty Springs Altivo Best VG-86 2Yr 1\***  
3<sup>e</sup> mère/3<sup>rd</sup> Dam

**MISTY SPRINGS ALTIVO BEST PB**  
HOCANF9670552 R&W ET  
VG-86-2YR-CAN 1\*(3/2)  
02-00 305 9816 417 4.2 372 3.8  
365 11473 493 4.3 444 3.9  
BCA 242 280 286  
1 LACT: 15034 671 4.5 600 4.0 KG  
AVG BCA: M242(+26) F280(+56) P286(+61)  
Progeny Data: 0EX 1VG 1GP 0G 0F  
2 DAUS ME AVG: 13850 567 4.1 500 3.6  
AVG BCA: M262 F291 P302

Photos: Sabrina©Vicki Fletcher; Samantha©Patty Jones



**Bricon Goldwyn Sabrina**  
 1<sup>st</sup> Int. Yearling New Brunswick Show 2014  
 1<sup>st</sup> Int. Yearling Woodstock Old Home Week 2014  
**She sells!**

**Lewisdale Dundee Samantha**  
**EX (MS:91)**  
 3-06 365 12,642 kg 3.9% 3.3% (233-243-239)  
 3<sup>rd</sup> Milking Yearling Atlantic Champ. Show 2009  
 3<sup>rd</sup> 3-Yr-Old Ormstown 2011  
 Nom. All-Ontario 2009  
**Dam**

88

**BRICON GOLDWYN SABRINA**

HOCANM11672823 ET B:2012 Dec 02  
 CAN-PA Aug\*14 43%Rel PA LPI+2499/40%  
 KG M+349/56% F+42/90% %F+0.28  
 SCS 2.77 P+23/77% %P+0.10  
 CAN-PA Aug\*14 40%Rel Conf+11/98%  
 MS+10 F&L+8 DS+6 R+6

1ST INT. YEARLING NEW BRUNSWICK SHOW 2014  
 1ST INT. YEARLING WOODSTOCK OLD HOME WEEK 2014

Consigned by:  
 CHERRY CREST HOLSTEINS  
 Tel: 613-528-4331 Fax: 613-528-4006  
 BRIAN W. CONNOR  
 Tel: 506-463-2409 Fax: 506-463-0009

**Intermediate Yearling**  
**Bred May 29, 2014 to Uno, Due Mar. 7, 2015**  
**Her Full Sister Nom. All-Ont Jr 4H 2013**

**BRAEDALE GOLDWYN PB**

HOCANM10705608 \*CVF\*BYF\*BLF  
 GP-84-8YR-CAN EXTRA'05 GM\*12  
 F&L:83 DS:84 R:87  
 CAN-GEBV Aug\*14 99%Rel GLPI+2607/99%  
 KG M+218/35% F+44/80% %F+0.34  
 SCS 2.54 P+24/62% %P+0.16  
 CAN-GEBV Aug\*14 99%Rel Conf+11/97%  
 MS+10 F&L+11 DS+6 R+1  
 Progeny Data: 34127 Daus: 86% GP+  
 2208EX 12959VG 14205GP 4478G 277F  
 35426 DAUS ME AVG: 11445 453 4.0 368 3.2  
 AVG BCA: M216 F232 P222

**SHOREMAR JAMES PB**

HOCANM5902195 \*CVF\*BLF  
 GP-81-2YR-CAN EXTRA'98  
 CAN-GEBV Aug\*14 99%Rel GLPI+1478/99%  
 KG M-756 F-2 %F+0.25 P+1 %P+0.23  
 CAN-GEBV Aug\*14 99%Rel Conf+0

**BRAEDALE BALER TWINE PB**

HOCANF6860888 \*BLF ETM  
 VG-86-2YR-CAN 33\*(27/138)  
 02-01 305 12096 591 4.9 402 3.3  
 365 14019 690 4.9 477 3.4  
 BCA 299 397 314  
 1 LACT: 27051 1359 5.0 1005 3.7 KG

**LEWISDALE DUNDEE SAMANTHA PB**

HOCANF7907972 ET B:2007 Sep 03  
 EX-90-CAN  
 MS:91(FA:8 RAH:8 RAW:6) F&L:88 DS:90 R:90  
 CAN-EBV Aug\*14 71%Rel LPI+2379/59%  
 KG M+479/63% F+40/88% %F+0.22  
 SCS 3.01 P+21/74% %P+0.05  
 CAN-EBV Aug\*14 60%Rel Conf+10/97%  
 MS+9 F&L+6 DS+6 R+10  
 02-00 305 9012 354 3.9 295 3.3  
 BCA 229 241 234  
 03-06 305 11076 423 3.8 359 3.2  
 365 12642 489 3.9 420 3.3  
 BCA 233 243 239  
 06-00 305 10551 409 3.9 341 3.2  
 BCA 202 209 205  
 3 LACT: 40359 1614 4.0 1360 3.4 KG  
 AVG BCA: M221(+18) F231(+16) P226(+22)  
 NOM. ALL-ONTARIO MILKING 1-YR 2009  
 2ND MILKING 1-YR 2009 ATLANTIC CHAMP.  
 3RD 3-YR 2011 ORMSTOWN  
 Progeny Data: 0EX 0VG 4GP 0G 0F  
 3 DAUS ME AVG: 10771 519 4.8 384 3.6  
 AVG BCA: M204 F266 P232

**REGANCREST DUNDEE-ET PB**

HOUSAM127640114 \*CVF\*BYF\*BLF ET  
 EX-95-6YR-USA ST'04  
 CAN-GEBV Aug\*14 99%Rel GLPI+1777/99%  
 KG M-112 F-25 %F-0.20 P+3 %P+0.05  
 CAN-GEBV Aug\*14 99%Rel Conf+6

**STADACONA OUTSIDE ABEL PB**

HOCANF8077661  
 VG-88-4YR-CAN 33\*(15/150)  
 02-02 305 9521 316 3.3 289 3.0  
 BCA 238 214 228  
 03-03 305 14753 696 4.7 432 2.9  
 365 16601 769 4.6 496 3.0  
 BCA 317 407 292  
 04-06 305 13117 555 4.2 383 2.9  
 BCA 272 308 247  
 3 LACT: 48588 2017 4.2 1480 3.0 KG  
 AVG BCA: M276(+73) F310(+97) P256(+52)  
 1 Superior Lactation  
 HM. ALL-ATLANTIC INT. 1-YR 2001  
 1ST INT. CALF 2000 DRUMMOND  
 Progeny Data: 11EX 24VG 3GP 0G 0F  
 38 DAUS ME AVG: 13023 506 3.9 396 3.0  
 AVG BCA: M246 F259 P240



**Eastside Lewisdale Gold Missy**  
**EX-95 11\***  
**Supreme Champion WDE & Royal 2011**  
**Mat. Sister to the Dam**

**STADACONA PROGRESS ANIBEL PB**

HOCANF8002479  
 VG-85-3YR-CAN 2\*(10/0)  
 04-03 305 15314 522 3.4 480 3.1  
 365 17321 595 3.4 548 3.2  
 BCA 295 272 293  
 8 LACT: 120719 4098 3.4 3770 3.1 KG  
 AVG BCA: M264(+40) F241(+18) P256(+27)  
 1 Super3, 3 Superior Lactations  
 Progeny Data: 0EX 1VG 1GP 1G 0F  
 3 DAUS ME AVG: 13981 555 4.0 418 3.0  
 AVG BCA: M264 F284 P253

Photo: Carl Saucier



Laitxpert *Extra* Goldwyn  
VG-87 2Yr

2<sup>nd</sup> Sr. 3-Yr-Old &  
Res. Int. Champ. Supreme Dairy Show 2014  
2<sup>nd</sup> Sr. 3-Yr-Old &  
Res. Int. Champ. Jr Show WDE 2014  
**She Sells!**

89

**LAITXPERT EXTRA GOLDWYN**

HOCANF106756376 ET B:2010 Dec 27  
VG-87-2YR-USA  
MACE Aug\*14 36%Rel MLPI+2005/34%  
KG M+133/44% F+12/52% %F+0.07  
SCS 2.82 P+8/50% %P+0.04  
MACE Aug\*14 35%Rel Conf+2/47%  
MS+4 F&L+2 DS+4 R+0

02-01 305 10941 403 3.7 347 3.2  
355 12583 457 3.6 402 3.2  
1 LACT: 12583 457 3.6 402 3.2 KG  
1ST INT. 1-YR 2012 ON SPRING DISCOVERY  
2ND INT. CALF 2011 LINDSAY EX.

Consigned by:  
Ferme Blondin  
Tel.: 514-239-5435  
Ferme Jacobs  
Tel.: 418-285-2674

4th & 5th Maternal Dam  
NORHURST AEROSTAR TUPELO VG-86-4YR-CAN 1\*  
NORHURST DESIGNER TOOTS VG-85-4YR-CAN

**BRAEDALE GOLDWYN PB**

HOCANM10705608 \*CVF\*BYF\*BLF  
GP-84-8YR-CAN EXTRA'05 GM'12  
F&L:83 DS:84 R:87  
CAN-GEV Aug\*14 99%Rel GLPI+2607/99%  
KG M+218/35% F+44/80% %F+0.34  
SCS 2.54 P+24/62% %P+0.16  
CAN-GEV Aug\*14 99%Rel Conf+11/97%  
MS+10 F&L+11 DS+6 R+1  
Progeny Data: 34141 Daus: 86% GP+  
2216EX 12973VG 14195GP 4480G 277F  
35426 DAUS ME AVG: 11445 453 4.0 368 3.2  
AVG BCA: M216 F232 P222

**SHOREMAR JAMES PB**

HOCANM5902195 \*CVF\*BLF  
GP-81-2YR-CAN EXTRA'98  
CAN-GEV Aug\*14 99%Rel GLPI+1478/99%  
KG M-756 F-2 %F+0.25 P+1 %P+0.23  
CAN-GEV Aug\*14 99%Rel Conf+0

**BRAEDALE BALER TWINE PB**

HOCANF6860888 \*BLF ETM  
VG-86-2YR-CAN 33\*(27/138)  
02-01 305 12096 591 4.9 402 3.3  
365 14019 690 4.9 477 3.4  
BCA 299 397 314  
1 LACT: 27051 1359 5.0 1005 3.7 KG

**A MARK CJ GILBROOK GRAND ET PB**

HOCANM393207 \*BLF\*MFF ET  
VG-86-5YR-CAN EXTRA'93  
**STELBRO JENINE AEROSTAR PB**  
HOCANF5337384 \*BLF  
VG-85-4YR-CAN

**MAUGHLIN STORM PB**

HOCANM5457798 \*CVF\*BRC\*BLF ET  
EX-CAN EXTRA'96

**BRAEDALE GYPSY GRAND PB**

HOCANF5912235  
VG-88-5YR-CAN 37\*(0/185)

**TEM-NORTH DAMIEN TIFFY PB**

HOCANF8641248 B:2003 Mar 14  
VG-85-2YR-CAN  
MS:86(FA:7 RAH:8 RAW:5) F&L:81 DS:87 R:83  
CAN-EBV Aug\*14 63%Rel LPI+1644/48%  
KG M-513/14% F-8/23% %F+0.11  
SCS 3.24 P-8/21% %P+0.08  
CAN-EBV Aug\*14 48%Rel Conf+3/57%  
MS+3 F&L-2 DS+5 R+3  
02-00 305 7562 275 3.6 250 3.3  
365 9023 336 3.7 306 3.4  
BCA 198 195 205  
04-02 103 4658 198 4.3 146 3.1  
2 LACT: 21822 897 4.1 782 3.6 KG  
AVG BCA: M198 F195 P205  
2ND JR. 2-YR 2005 TEMISCAMINGUE  
Progeny Data: 0EX 1VG 3GP 0G 0F  
4 DAUS ME AVG: 8548 334 3.9 267 3.1  
AVG BCA: M162 F171 P162

**TEM-NORTH JOLT DAMIEN PB**

HOCANM10794272  
CAN-PA Aug\*14 42%Rel PA LPI+1411/37%  
KG M-1068 F-4 %F+0.37 P-22 %P+0.14  
CAN-PA Aug\*14 36%Rel Conf-3

**TEM-NORTH LEDUC TAFFY PB**

HOCANF10784327  
VG-85-4YR-CAN  
01-11 305 7799 263 3.4 232 3.0  
365 9058 314 3.5 275 3.0  
BCA 204 187 190  
03-09 305 9518 331 3.5 282 3.0  
BCA 195 184 183  
04-10 305 9084 317 3.5 279 3.1  
BCA 174 165 171  
06-00 305 8982 298 3.3 271 3.0  
BCA 170 154 165  
4 LACT: 38537 1341 3.5 1180 3.1 KG  
AVG BCA: M186(+21) F173(+3) P177(+16)  
Progeny Data: 0EX 2VG 1GP 0G 0F  
3 DAUS ME AVG: 8936 314 3.5 275 3.1  
AVG BCA: M169 F161 P167

**SECOND-LOOK JOLT PB**

HOUSAM2149849 \*CVF\*BLF  
EX-90-7YR-USA EXTRA'99 GM

**NORHURST PATROLLER DEBBIE PB**

HOCANF5635362  
VG-86-5YR-CAN 1\*(6/0)

**LYSTEL LEDUC PB**

HOCANM6193092 \*CVF\*BLF ET  
EX-CAN ST'99

**NORHURST BOLDMAN TUPELO PB**

HOCANF10565873  
VG-87-6YR-CAN  
03-01 305 8820 346 3.9 295 3.3  
365 10171 410 4.0 350 3.4  
BCA 193 206 203  
5 LACT: 47674 1821 3.8 1601 3.4 KG  
AVG BCA: M190(+9) F192(+5) P198(+15)  
Progeny Data: 0EX 1VG 0GP 0G 0F  
1 DAUS ME AVG: 9832 337 3.4 293 3.0  
AVG BCA: M186 F173 P177

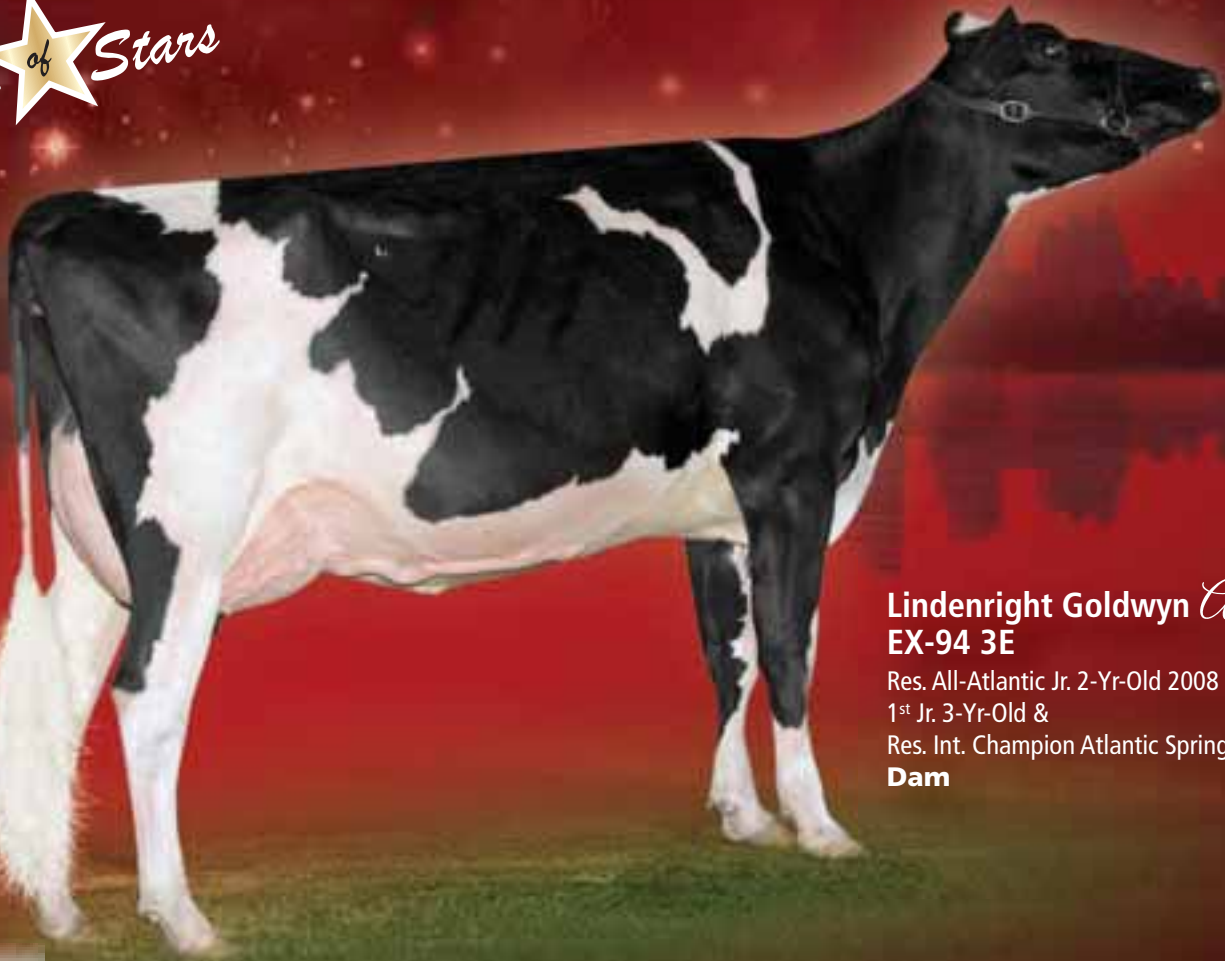


Photo: Vicki Fletcher

**Lindenright Goldwyn Adore**  
**EX-94 3E**

Res. All-Atlantic Jr. 2-Yr-Old 2008  
1<sup>st</sup> Jr. 3-Yr-Old &  
Res. Int. Champion Atlantic Spring 2009  
**Dam**

**90**

**TOLAMIKA SID ADORABLE**

HOCANF107763303 ET B:2012 Sep 05  
CAN-PA Aug\*14 43%Rel PA LPI+2209/39%  
KG M-21/36% F+10/49% %F+0.11  
SCS 2.75 P+12/58% %P+0.11  
CAN-PA Aug\*14 39%Rel Conf+11/98%  
MS+12 F&L+4 DS+8 R+6

**3<sup>rd</sup> Milking Yearling**  
**Supreme Dairy Show 2014**  
**Ready for the Royal!**

Consigned by:  
TY-D HOLSTEINS  
Tel: 418-284-9972 Fax: 418-285-4087

4th-7th Maternal Dam  
DREAM&DO EAGLE LIBERTY VG-85-5YR-CAN 13\*  
DREAM&DO BECCAS IMAGE-ET EX-94-3E-USA  
RAY-COLLINS BMAKER GIRL WILLOW EX-94-5E-USA  
RAY-COLLINS BOOTMAKER GIRL VG-87-6YR-USA

**PINE-TREE SID-ET PB**

HOUSAM62175895 \*CVF\*BYF\*BLF\*DPF ET  
VG-86-2YR-CAN ST\*10  
F&L:84 DS:87 R:92  
CAN-GEBV Aug\*14 99%Rel GLPI+2146/98%  
KG M+51/26% F+16/45% %F+0.13  
SCS 2.94 P+7/30% %P+0.04  
CAN-GEBV Aug\*14 99%Rel Conf+14/99%  
MS+15 F&L+2 DS+11 R+8  
Progeny Data: 3809 Daus: 84% GP+  
3EX 774VG 2420GP 599G 13F  
3244 DAUS ME AVG: 11569 456 3.9 367 3.2  
AVG BCA: M219 F234 P222

**REGANCREST-MR DRHAM SAM-ET PB**

HOUSAM207184639 \*CVF\*RDF\*BLF ET  
GM ST\*08  
CAN-GEBV Aug\*14 99%Rel GLPI+1916/99%  
KG M-199 F+17 %F+0.23 P+0 %P+0.05  
CAN-GEBV Aug\*14 99%Rel Conf+7  
**PINE-TREE FINLEY MINNIE-ET PB**  
HOUSAF61733050 ET  
EX-91-CAN EX-90-6YR-USA DOM 4\*(0/21)  
06-10 305 15501 618 4.0 471 3.0  
354 17493 699 4.0 535 3.1  
BCA 279 303 274  
3 LACT: 46991 1681 3.6 1507 3.2 KG

**REGANCREST ELTON DURHAM-ET PB**

HOUSAM2250783 \*CVC\*RDF\*BLF ET  
EX-90-7YR-USA GM  
**SHER-EST EMORY SWANNY PB**  
HOUSAF17037800 \*CVF  
EX-90-2E-USA DOM 2\*(0/10)  
**OPSA FINLEY-ET PB**  
HOUSAM120780521 \*CVF\*BYF\*BLF ET  
GM  
**WESSWOOD-HC RUDY MISSY-ET PB**  
HOUSAF122797679 \*CVF ET  
EX-92-3E-USA DOM GMD

**LINDENRIGHT GOLDWYN ADORE PB**

HOCANF7777964 ET B:2006 Mar 03  
EX-94-3E-CAN  
MS:94(FA:9 RAH:7 RAW:7) F&L:95 DS:95 R:91  
CAN-EBV Aug\*14 71%Rel LPI+2318/58%  
KG M-93/32% F+4/40% %F+0.08  
SCS 2.55 P+17/67% %P+0.17  
CAN-EBV Aug\*14 56%Rel Conf+9/95%  
MS+10 F&L+7 DS+5 R+4  
05-01 305 13422 549 4.1 434 3.2  
BCA 263 292 271  
07-05 305 14561 544 3.7 490 3.4  
355 16163 603 3.7 548 3.4  
BCA 288 289 306  
4 LACT: 52164 1988 3.8 1750 3.4 KG  
AVG BCA: M250(+2) F257(+0) P263(+1)  
1 Superior Lactation  
RES. ALL-ATLANTIC JR.2-YR 2008  
NOM. ALL-QUEBEC JR.3-YR 2009  
INT.CHAMP 2008 ATLANTIC CHAMP.  
RES.INT. 2009 ATLANTIC SPRING  
1ST JR.3-YR 2009 ATLANTIC SPRING  
1ST JR.2-YR 2008 ATLANTIC CHAMP.  
Progeny Data: 0EX 2VG 0GP 0G 0F  
1 DAUS ME AVG: 10939 447 4.1 379 3.5  
AVG BCA: M207 F229 P229

**BRAEDALE GOLDWYN PB**

HOCANM10705608 \*CVF\*BYF\*BLF  
GP-84-8YR-CAN EXTRA\*05 GM\*12  
CAN-GEBV Aug\*14 99%Rel GLPI+2607/99%  
KG M+218 F+44 %F+0.34 P+24 %P+0.16  
CAN-GEBV Aug\*14 99%Rel Conf+11  
**LINDENRIGHT LEADER CL LUCILLE PB**  
HOCANF7053311 ET  
EX-90-4E-CAN 8\*(8/34)  
03-04 305 12976 451 3.5 432 3.3  
BCA 270 252 281  
05-10 305 13706 440 3.2 433 3.2  
BCA 265 232 267  
07-03 305 13630 527 3.9 440 3.2  
BCA 259 269 265  
08-09 305 15338 612 4.0 474 3.1  
BCA 290 317 291  
10-10 305 16174 633 3.9 525 3.2  
365 18375 705 3.8 598 3.3  
BCA 324 350 339  
7 LACT: 113125 4049 3.6 3723 3.3 KG  
AVG BCA: M267(+42) F261(+34) P277(+45)  
2 Superior Lactations  
Progeny Data: 4EX 6VG 2GP 0G 0F  
12 DAUS ME AVG: 12125 439 3.6 394 3.2  
AVG BCA: M229 F225 P239

**SHOREMAR JAMES PB**

HOCANM5902195 \*CVF\*BLF  
GP-81-2YR-CAN EXTRA\*98  
**BRAEDALE BALER TWINE PB**  
HOCANF6860888 \*BLF ETM  
VG-86-2YR-CAN 33\*(27/138)  
**COMESTAR LEADER PB**  
HOCANM5319769 \*CVF\*BLF ET  
EX-CAN EXTRA\*96 GM  
**LINDENRIGHT CONQUEST LIDY PB**  
HOCANF5484831 \*BLF  
VG-86-5YR-CAN 11\*(2/53)  
07-09 305 14320 520 3.6 457 3.2  
365 15575 562 3.6 499 3.2  
BCA 273 267 275  
7 LACT: 102146 3534 3.5 3393 3.3 KG  
AVG BCA: M245(+30) F229(+10) P253(+30)  
1 Superior Lactation  
Progeny Data: 1EX 11VG 11GP 4G 0F  
25 DAUS ME AVG: 12042 423 3.5 391 3.2  
AVG BCA: M228 F217 P236