

*pictured far left ...*  
**HURONIA CENTURION**  
**VERONICA 20J, EX-97**  
 — 3RD DAM

*pictured left ...*  
**AVONLEA IATOLA**  
**VICTORIA, VG-89** —  
 MATERNAL SISTER  
 TO CONSIGNMENT

**91b**

**AVONLEA COMERICA VELVET<sup>ET</sup>**

**91c**

**AVONLEA COMERICA VOGUE<sup>ET</sup>**

**AVONLEA COMERICA VELVET<sup>ET</sup>**

11356862 Born: June 2, 2011 Tat: 472Y

- Sells fresh June 18, 2013
- CLASS CATEGORY: JUNIOR TWO-YEAR-OLD

Consigned by ...

**AVONLEA GENETICS INC**  
 BRIGHTON, ON | 613-475-2627

**AVONLEA COMERICA VOGUE<sup>ET</sup>**

11356861 Born: June 1, 2011 Tat: 471Y

- First Test: 20D 23.3kg 6.3%F 3.7%P SCC: 109,000
- Sells fresh May 24, 2013
- CLASS CATEGORY: JUNIOR TWO-YEAR-OLD



**Bridon Remake Comerica<sup>ET</sup>**

8422994 Excellent-90  
 CAN-GEBV: (4/13) -569M +2F +0.46% -20P +0.03% RPT.99%  
 CAN-ETA: (4/13) +8 FC 97% RPT 96 RK +937 GLPI  
 SCS: +2.82 Inbr.Coeff. +4.93% R-Value: +15%  
 780 prog class: 46EX 300VG 339GP 88G 7F GP +88%

**Paullyn Duaiseoir Virginia<sup>ET</sup>**

7634956 **VERY GOOD-88 (4-5)**  
 2-00 302 5946 246 4.1% 227 3.8% (225 175 227)  
 3-02 305 8299 403 4.9% 339 4.1% (273 244 295)  
 4-03 305 9219 403 4.4% 366 4.0% (277 223 290) SA  
 3 Lact: 24476M 1109F 4.5% 983P 4.0%  
 Rump: 89 MS: 88 F&L: 88 DS: 90  
 AVG BCA: (4/13) +258M +214F +271P +38M +4F +46P  
 CAN-EBV: (4/13) +45M -16F -0.29% +6P +0.09% RPT.76%  
 CAN-ETA: (4/13) +4 FC 48% RPT 76 RK +1084 LPI  
 SCS: +3.02 Inbr.Coeff. +4.80% R-Value: +12%  
 2 prog class: 2VG GP+100%

**Rock Ella Remake<sup>ET</sup>**

139233 Excellent

**Jaspar Renaissance's Evening**

599920 Excellent-91 3E 20\*  
 6-11 305 10445 625 6.0% 398 3.8% (313 345 313) PA  
 5 Lact: 54022M 3210F 5.9% 2163P 4.0%  
 • All-Canadian 1999, 1998 & 1997

**Shamrock Duaiseoir**

10029254

**Bridon Jade Virginia**

8423009 **VERY GOOD-89**  
 1-11 305 4417 262 5.9% 179 4.1% (179 197 192)  
 2-11 305 5925 362 6.1% 246 4.2% (211 234 230)  
 4-07 305 7844 435 5.6% 309 3.9% (236 240 245)  
 6-00 305 7496 475 6.3% 309 4.1% (227 262 247) SA  
 7-00 305 7554 434 5.8% 325 4.3% (226 240 256)  
 8-00 305 6906 398 5.8% 301 4.4% (207 222 237)  
 9-11 305 6512 367 5.6% 273 4.2% (199 212 220)  
 11-01 185 6186 322 5.2% 243 3.9% (185 183 191) proj  
 8 Lact: 61971M 3655F 5.9% 2618P 4.2%  
 AVG BCA: (4/13) +212M +230F +232P +13M +40F +31P  
 • 4th Milking Yearling, 2003 RAWF  
 • HM All-Canadian Milking Yearling 2003  
 • Nominated All-Canadian 4-H Calf 2002

**MATERNAL SISTERS TO CONSIGNMENT ...**

**Grayridge Comerica Vivacious, EX-92 (UK)**

- 3-02 305 9269 531 5.7% 337 3.6%
- 1st SR 2 & Grand Champion, 2010 Great Yorkshire

**C-Avonlea Jackkife Vavoom, VG-88**

- All-Canadian Junior Calf 2009

**Avonlea Iatola Victoria, VG-89**

- 2-00 305 5842 287 4.9% 210 3.6%
- ABA All-American Junior 2-Year-Old 2012
- 1st JR 2 & HM Intermediate Champion, 2012 WDE
- 4th Junior 2-Year-Old, 2012 All American
- 1st Junior 2-Year-Old, 2012 IL State Fair

**3<sup>RD</sup> DAM ... Huronia Centurion Veronica 20J, EX-97**

- 2-11 265 11710 577 4.9% 478 4.1%
- Dam of 27 EX and 15 VG daughters to date
- Grand Champion, 2004 - 2005 - 2006 WDE

**4<sup>TH</sup> DAM ... Genesis Renaissance Vivianne, VG-87 7\***

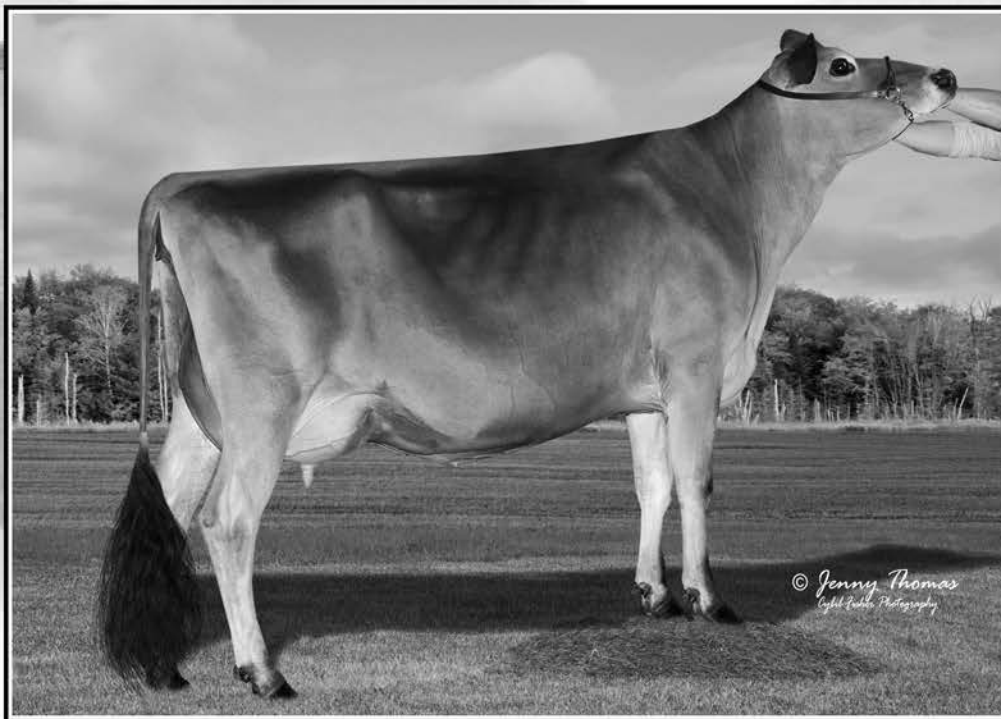
**5<sup>TH</sup> DAM ... Genesis Juno Virginia, SUP EX-92 6E 4\***

**6<sup>TH</sup> DAM ... Swissbell F Veronica 39M, SUP EX 1 4\***

**7<sup>TH</sup> DAM ... Swissbell Ella Virginia, EX-91**

**8<sup>TH</sup> DAM ... Swissbell Virginia, SUP EX-90**

**9<sup>TH</sup> DAM ... Belmont Jester Virginia, SUP EX**



SELECT MENTHOR SARA, EX-91 — DAM

**115**

## BILLINGS MINER SAGA

### BILLINGS MINER SAGA

3012564175 Born: April 3, 2013 Tat: 118  
 PA: (4/13) -816M -6F -18P 99CMS\$ 77NMS\$ 54FMS\$  
 2.8PL 1.4DPR 3.07SCS  
 PA TYPE: 1.1 JPI 19%R 3

Consigned by ...

BILLINGS FARM & MUSEUM  
 WOODSTOCK, VT | 802-291-0544

• CLASS CATEGORY: JUNIOR CALF



\$

### Billings Jade Miner

116133670  
 PA: (4/13) -432M +11F -8P 253CMS\$ 234NMS\$ 216FMS\$  
 4.4PL 1.4DPR 2.94SCS  
 PA TYPE: 1.3 JPI 39%R 51

### Select Mentor Sara

106196640 EXCELLENT-91 (3-7)  
 2-04 305 6046 285 4.7% 229 3.8%  
 PPA: (5/13) -2682M -67F -59P  
 YIELD DEVIATION: (5/13) -2906M -85F -61P  
 USDA PTA: (4/13) 1RECS 40%R 8%ILE  
 -1135M -19F -27P -55CMS\$ -80NMS\$ -108FMS\$  
 1.1PL 1.4DPR 3.20SCS

AJCA: (4/13) PTAT 32%R 0.9 JPI 36%R -44

- 1st Senior 2-Year-Old, 2012 Eastern States Expo
- Nominated ABA All-American Fall Yearling 2011
- 1st Fall Yearling, 2011 Eastern States Expo
- 3rd Fall Yearling, 2011 WDE

### Giprat Belles Jade <sup>ET</sup>

10008436 Excellent-92

### Billings Legion Mini Me

113770906 Excellent-95  
 7-00 305 9585 505 5.3% 346 3.6%  
 • Nominated ABA All-American 100,000 lb 2012

### Select-Scott Jade Mentor <sup>ET</sup>

104904414

### Peninsula Minister Sato 161S

9538081 VERY GOOD-87 (4-8)  
 2-11 305 6273 347 5.5% 235 3.8% (223 224 220)  
 4-05 305 7624 408 5.4% 284 3.7% (227 224 222)  
 5-11 254 7364 420 5.7% 286 3.9% (223 233 229) proj  
 3 Lact: 25442M 1449F 5.7% 994P 3.9%  
 Rump: 88 MS: 85 F&L: 89 DS: 92  
 AVG BCA: (4/13) +225M +224F +221P +14M +33F +10P  
 CAN-EBV: (4/13) -248M +11F +0.39% -7P -0.03% RPT.73%  
 CAN-ETA: (4/13) +10 FC 40% RPT 99 RK +1235 LPI  
 SCS: +3.04 Inbr.Coeff. +4.90% R-Value: +13%  
 1 prog class: 1GP GP+100%

3<sup>RD</sup> DAM ... Peninsula Sultan Freda, EX-92

4<sup>TH</sup> DAM ... Peninsula H R Freda, EX-90

5<sup>TH</sup> DAM ... Peninsula MC Tops Fancy, EX-91

6<sup>TH</sup> DAM ... Peninsula Juno Precious, VG-86

7<sup>TH</sup> DAM ... Peninsula B S Poppy, EX

**MAKER A SUCCESSFUL CHOICE**

11238345 Born: April 29, 2011 Tag: 65

PA: (4/13) -125M +7F +0.18% -3P +0.03% RPT.38%  
 CAN-ETA: (4/13) +5(PA) FC 28% RPT 85 RK +1059(PA) LPI  
 SCS: +2.89(PA) Inbr.Coeff. +4.79% R-Value: +14%  
 Projected to BCA: 226 204 200 with 4.7%F 3.5%P

• Fresh May 13, 2013

Consigned by ...

MAKER FARMS INC  
 ROCKWOOD, ON

• CLASS CATEGORY: JUNIOR TWO-YEAR-OLD



\$

**Buttercrest Success ET**

115517525

CAN-GEV: (4/13) +684M +48F +0.19% +33P +0.11% RPT.88%  
 CAN-ETA: (4/13) +3 FC 74% RPT 67 RK +1498 GLPI  
 SCS: +2.80 Inbr.Coeff. +11.52% R-Value: +15%  
 58 prog class: 15VG 32GP 11G GP+81%

**Maker Shyster Cherry**

9665243 VERY GOOD-88 (3-5)

2-00 305 5408 267 4.9% 191 3.5% (217 201 203)

3-01 305 5962 304 5.1% 222 3.7% (212 197 207)

2 Lact: 11500M 580F 5.0% 418P 3.6%

Rump: 86 MS: 88 F&amp;L: 88 DS: 89

AVG BCA: (4/13) +215M +199F +205P +3M +6F -9P

CAN-EBV: (4/13) -935M -35F +0.17% -38P -0.04% RPT.62%

CAN-ETA: (4/13) +7 FC 38% RPT 96 RK +620 LPI

SCS: +2.98 Inbr.Coeff. +7.20% R-Value: +12%

**SC Gold Dust Paramount latola ET**

112118277

**Buttercrest Rocket Snap**

112011486 Excellent-91

3-01 305 8968 531 5.9% 352 3.9%

**WF Amadeo Shyster**

114957478 Excellent-91

**Potwell Nevada's Chickita 3T**

9535083 VERY GOOD-87 (3-4)

2-01 251 3508 189 5.4% 136 3.9% (139 139 141)

4 Lact: 9406M 509F 5.4% 352P 3.7%

Rump: 86 MS: 86 F&amp;L: 89 DS: 88

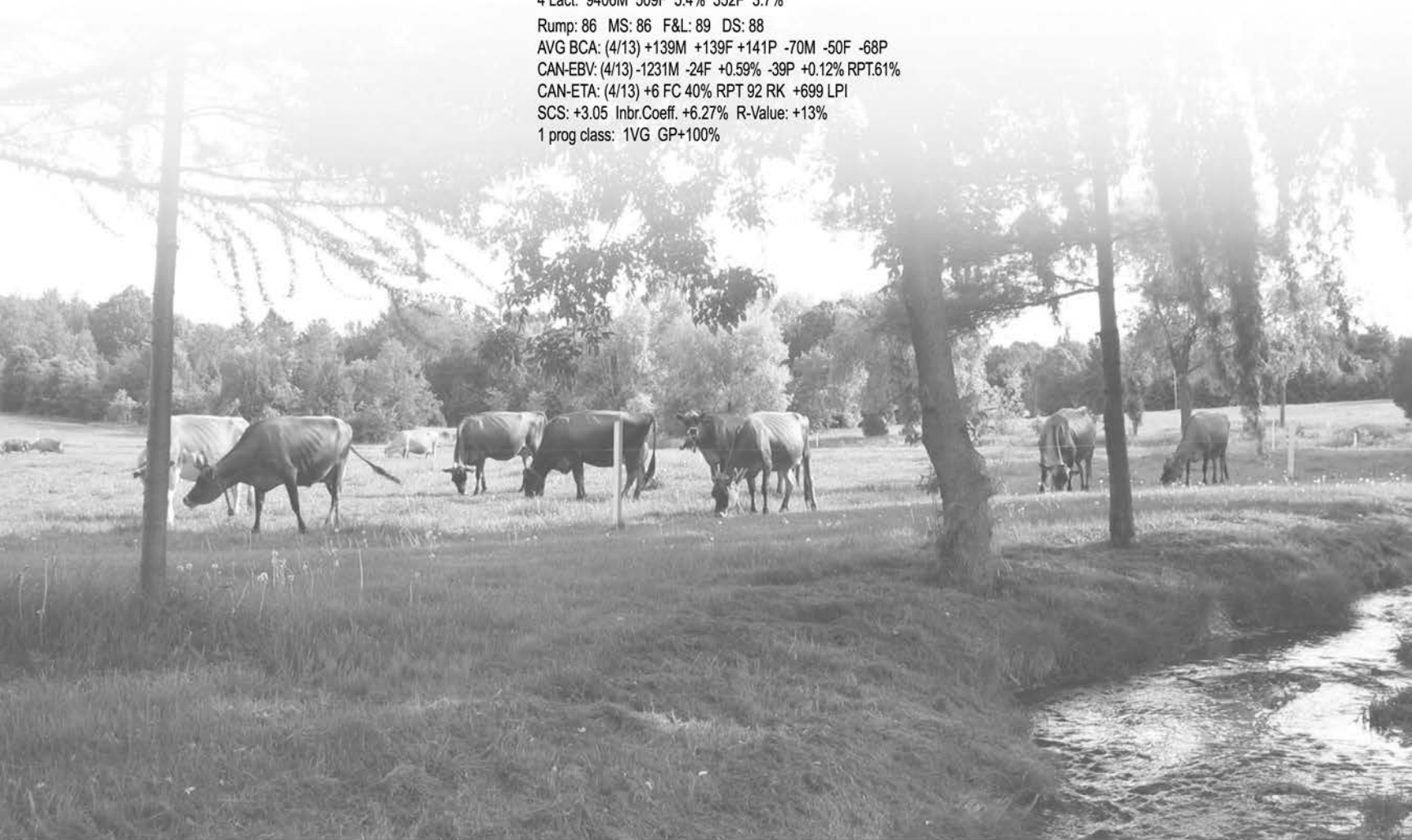
AVG BCA: (4/13) +139M +139F +141P -70M -50F -68P

CAN-EBV: (4/13) -1231M -24F +0.59% -39P +0.12% RPT.61%

CAN-ETA: (4/13) +6 FC 40% RPT 92 RK +699 LPI

SCS: +3.05 Inbr.Coeff. +6.27% R-Value: +13%

1 prog class: 1VG GP+100%

3<sup>RD</sup> DAM ... Rosalea Jam's Bonita, VG-874<sup>TH</sup> DAM ... Rosalea Legend Fan Blossom, EX-91 2E 1\*5<sup>TH</sup> DAM ... Rosalea Imperial Fan Blossom, VG-866<sup>TH</sup> DAM ... Rosalea S B Fan Blossom 35X, VG-897<sup>TH</sup> DAM ... Rosalea S B Blossom 12T, VG-888<sup>TH</sup> DAM ... Rosalea Doris Blossom 2, VG-859<sup>TH</sup> DAM ... Rosalea Advancer Blossom 2 1\*



DUNCAN CHIEF ROSY, VG-88 — GRANDAM

**117**

## ROCK ELLA BW SHYSTER ROSE

### ROCK ELLA BW SHYSTER ROSE

**EXCELLENT-90** at 4-9

9807835 Born: September 7, 2008 Tat: MBO 14U

Rump: 90 MS: 91 F&L: 87 DS: 90

CAN-EBV: (4/13) -72652M -41F -0.06% -22P +0.10% RPT.58%

CAN-ETA: (4/13) +3(PA) FC 20% RPT 65 RK +727(PA) LPI

SCS: +3.01 Inbr.Coeff. +6.804.88% R-Value: +12%

- 3-05 305 6636 320 4.8% 272 4.1% (213 189 231)
- 4-06 305 7563 627 8.3% 283 3.7% (229 348 226) proj
- Last Test: 33.6L SCC: 58,000
- Bred June 19, 2013 to Arethusa Jade Velocity

Consigned by ...

PAUL & LORRAINE FRANKEN  
CLINTON, ON | 519-482-5008

- CLASS CATEGORY: FOUR-YEAR-OLD



\$

### WF Amadeo Shyster

114957478 Excellent-91

MACE: (4/13) -882M -50F -0.11% -29P +0.08% RPT.73%

CAN-ETA: (4/13) +5(MACE) FC 53% RPT 81 RK +643(MACE) LPI

SCS: +3.00(MACE) Inbr.Coeff. +5.19% R-Value: +12%

125 prog class: 7EX 43VG 60GP 15G GP +88%

### Rock Ella BW Rose

10217175 **GOOD PLUS-83 (5-2)**

3-07 305 5724 279 4.9% 224 3.9% (188 168 195)

4-10 305 5306 257 4.8% 218 4.1% (169 149 183)

8-02 305 4764 243 5.1% 185 3.9% (132 128 135)

3 Lact: 17893M 903F 5.1% 721P 4.0%

Rump: 91 MS: 83 F&L: 84 DS: 82

AVG BCA: (4/13) +163M +148F +171P -50M -48F -39P

CAN-EBV: (4/13) -785M -41F -0.03% -25P +0.08% RPT.65%

CAN-ETA: (4/13) +1(PA) FC 25% RPT 39 RK +620704(PA) LPI

SCS: +2.93 Inbr.Coeff. +8.68% R-Value: +12%

1 prog class: 1EX GP+100%

### Piedmont Grove Amedeo

139523 Excellent-93

### Hermitage Counciller Sheba

10210999 Excellent-96 6E

5-03 305 10023 496 5.0% 375 3.7%

6 Lact: 54154M 2509F 4.6% 2000P 3.7%

- 2nd Aged Cow & Reserve Grand Champion, 2008 WDE

3<sup>RD</sup> DAM ... Silver J Rosebud, VG-80

4<sup>TH</sup> DAM ... Beau Rose Etta, EX-93

### Giprat Belle's By Whom <sup>ET</sup>

10203358

### Duncan Chief Rosy

594402 **VERY GOOD-88 (2-11)**

1-11 305 5535 256 4.6% 213 3.9% (227 195 231)

4-00 305 6992 332 4.8% 263 3.8% (229 199 229)

6-03 281 6628 297 4.5% 256 3.9% (200 164 203)

4 Lact: 22243M 1047F 4.7% 865P 3.9%

1 prog class: 1GP GP+100%

- Nominated All-Canadian Summer Yearling 1994