



**ILLINI**

*Golden  
Opportunity*  
**SALE**

**Saturday, April 21, 2018 ♦ 10:30am  
Boone County Fairgrounds ♦ Belvidere, Illinois**

# ILLINI

## Golden Opportunity

Saturday, April 21, 2018 ♦ 10:30am

Boone County Fairgrounds ♦ 8791 IL Route 76 ♦ Belvidere, Illinois

# SALE

### *Sale Staff*

Nate Janssen, Co-Chair 847-224-7859  
Brian Wesemann, Co-Chair 414-803-7142  
Larry Kleiner, Pedigrees 217-827-3468  
Brian Olbrich 815-482-7426  
John Erbsen 815-275-4990  
Gary Janssen 847-224-7857  
Jason Oertel 618-779-9060  
Tim Ewing, Holstein USA 417-753-7254

### *Cattle Preparation*

Kyle Aves 779-207-0865

### *Leadspeople*

Illinois Holstein Association Juniors

*Hotel Accomodations* 7 miles to fairgrounds

Holiday Inn Rockford ♦ 815-398-2200

7550 E. State St., Rockford, IL

Sleep Inn ♦ 815-398-5900

725 Clark Dr., Rockford, IL

### *Auctioneer*



Scott Courtney

Courtney Sales, LLC

563-380-1318 courtneysalesllc@gmail.com

### *Cattle Preview*

Friday, April 20, 2018 ♦ 6:30pm

Dinner sponsored by:

## Prairie State



## Sunshine Genetics, Inc.

Embryo Technologies

### *Online Bidding*



*Sale Updates:* [www.IllinoisHolsteins.com](http://www.IllinoisHolsteins.com) ♦ [www.Facebook.com/IllinoisHolsteins](http://www.Facebook.com/IllinoisHolsteins)

### *Sale Hosted by:*

**ILLINOIS HOLSTEIN ASSOCIATION**

Ed Smith, President

Steve Irwin, Vice-President

Sarah Lenkaitis, Secretary

Carol Jones, Treasurer

116 W. 10th St., Gridley, IL 61744

Phone: 815-934-5551 ♦ Email: [skipcarolj@gmail.com](mailto:skipcarolj@gmail.com)

Catalog by: Stephanie Hammerly ♦ [briardesigns@gmail.com](mailto:briardesigns@gmail.com) ♦ 608-732-2757

*Thank you to our sale sponsors!*

# ILLINI *Golden Opportunity* SALE



**Luck-E Advent Kandie-Red-ET EX-95-2E**  
Dam of Lot 1



## *Luck-E Jordy Kayla-Red-ET*

Matt L. Engel  
15N638 Walker Rd.  
Hampshire, IL 60140  
847-347-5561  
mattlucke@yahoo.com

*Potential 11th Generation VG-EX!*  
3144856752 99% RHA TC TL TD

**Born: October 21, 2017**

**CYCLE MCGUCCI JORDY-RED**  
3131666411 99% RHA CV TC TY TL TD  
GTPI +1938  
PTA -133M +27F -2P 79%R 4/2018  
PTA +62NM +.12%F +.01%P  
PTA -1.3PL 2.91SCS -2.9DPR 6.9%DCE  
PTA +3.62T +2.67UDC +2.92FLC 78%R 4/2018

**LUCK-E ADVENT KANDIE-RED-ET**  
64844990 100% RHA  
EX-95-2E EEEEE 6-06  
5-04 2 365 40,340 4.7 1877 3.4 1378  
3-09 2 365 31,400 4.9 1540 3.5 1114  
2-08 2 341 18,290 5.6 1019 3.5 646  
*2014 Red & White Cow of the Year*  
*Unanimous All-American R&W 5-Yr-Old 2014*  
*Senior Champion, Best Udder of Show &*  
*Reserve Grand Champion R&W WDE 2014*

**MR APPLES MCGUCCI-ET-RC**  
72353438 TY TL TD

**BRYERSQUART GCHIP JAIL-P-ET-RC**  
71402418 PO  
EX-90

**KHW KITE ADVENT-RED-ET**  
133002953 TV TL TD  
EX-94

**LUCK-E RUBENS KAYLIE-ET-RC**  
133343744  
EX-92 EEEEE GMD 10-05  
4-05 2 365 43,520 5.7 2466 3.5 1515  
*5th National Fat & 2nd IL Fat*  
2-04 2 352 27,760 5.2 1443 3.5 963  
3-05 2 267 22,330 4.3 966 3.5 777  
LIFE 140,350 4.9 6894 3.4 4784

**3rd Dam: Luck-E Royal Klassy**

EX-94-3E GMD  
8-05 2 365 41,710 4.1 1711 2.7 1143  
*Res. Jr. All-American Sr. 3-Yr-Old 1997*  
*HHM Jr. All-American 5-Yr-Old 1999*

**4th Dam: Luck-E Command Karlyn**

EX-94-2E  
4-08 2 365 28,690 3.8 1086 3.2 913

**5th Dam: Luck-E Mars Karlie-TW**

EX-90-3E  
8-01 2 365 34,350 3.5 1219 2.6 908  
LIFE 171,260 3.4 5791 2.7 4708

**6th Dam: Sun-Made Glendell Karmin-ET**

VG-87  
4-05 2 340 28,870 2.8 807 2.6 740

**7th Dam: Hiatt Kay**

EX-90 DOM  
3-09 2 313 17,680 3.9 682

**8th Dam: Bayless Fury Kay**

EX-92-2E GMD DOM  
4-11 2 365 21,380 3.6 780

**9th Dam: Daisy Killybracken Spruceland**  
VG-88

8-01 2 365 21,630 3.4 746

**10th Dam: Duke Daisy Spruceland**

VG-87



# ILLINI *Golden Opportunity* SALE



**Golden-Oaks Atwd Charla-ET EX-93 GMD**  
2nd Dam of Lot 2



**Golden-Oaks Champ Rae-ET EX-93-3E**  
3rd Dam of Lot 2



## *Golden-Oaks Call Charmen-ET*

Golden Oaks Farm  
PO Box 37  
Wauconda, IL 60084-0037  
847-224-7861  
eheinzmann@crown-chicago.com

*Potential 11th Generation EX!*  
**3143012794 99% RHA**

GTPI +2253  
PTA +190M +27F +11P 76%R 4/2018  
PTA +363NMS +.07%F +.02%P  
PTA +3.3PL 2.78SCS -.1DPR 4.6%DCE  
PTA +3.72T +3.32UDC +2.09FLC 75%R 4/2018

**Born: December 13, 2017**

**OCD 1STCLASS CALLEN-ET**  
**3125170885 100% RHA TR TP TY TV TL TD**  
GTPI +2242  
PTA +336M +25F +7P 80%R 4/2018  
PTA +401NM +.05%F -.01%P  
PTA +4.3PL 2.78SCS +0.9DPR 4.3%DCE  
PTA +3.06T +3.05UDC +1.69FLC 79%R 4/2018

**ZAHBULLS ALTA1STCLASS-ET**  
**71441918 TR TP TC TY TV TL TD**  
**EDG CLAIREWOOD MAY 2081-ET**  
**72437628**  
VG-88

**GOLDEN-OAKS MCC CHARLINA-ET**  
**3013874171 99% RHA**  
EX-90 EEE+E 3-07  
2-03 3 365 28,250 5.2 1457 3.6 1027

**DE-SU BKM MCCUTCHEN 1174-ET**  
**69990138 TR TP TC TY TV TL TD**  
EX-93 GM  
**GOLDEN-OAKS ATWD CHARLA-ET**  
**69823095**  
EX-93 EEEEE 5-03  
4-07 3 365 39,980 4.5 1802 3.7 1490  
3-06 3 344 39,140 4.2 1647 3.5 1369  
2-01 3 365 33,000 4.2 1392 3.6 1177  
LIFE 1184 120,790 4.4 5261 3.6 4390

**3rd Dam: Golden-Oaks Champ Rae-ET EX-93-3E**  
6-04 3 365 41,590 4.1 1714 3.0 1240  
LIFE 1455 134,060 4.4 5884 3.2 4269  
**4th Dam: Scientific Beauty Rae-ET**  
EX-90 DOM  
4-03 2 365 33,710 4.7 1595 3.5 1179  
**5th Dam: Scientific Jubilant Rae-ET**  
EX-90 DOM  
5-11 3 365 38,880 4.1 1608 3.6 1403  
**6th Dam: Hanoverhill Tony Rae**  
EX-96-3E GMD DOM 5\*  
6-11 2 365 40,220 4.1 1661 3.3 1331  
LIFE 2247 166,396 4.1 6904 3.4 5612  
*HM All-American Jr. 3-Yr-Old 1988*  
*Nom. All-American 5-Yr-Old 1991*  
**7th Dam: C Hanoverhill TT Roxette-ET**  
EX-94-2E GMD DOM  
10-00 3 365 35,040 4.3 1519 3.0 1063  
**8th Dam: Mil-R-Mor Roxette**  
EX-90 GMD DOM 30\*  
7-01 2 365 24,530 4.7 1153  
**9th Dam: C Glenridge Citation Roxy**  
EX-97-4E GMD  
10-01 2 365 25,280 4.2 1061  
LIFE 3620 209,784 4.5 9471  
*Queen of the Breed I & II*  
**10th Dam: C Norton Court Model Vee**  
EX-90 6\*  
LIFE 4183 218,629 3.9 8581  
*All-American Produce of Dam 1977, 1978 & 1979*  
**11th Dam: Norton Court Reflection Vale**  
VG-85 5\*  
LIFE 14 lac 249,583 3.7 9295

# ILLINI *Golden Opportunity* SALE



**Kings-Ransom Mogul Cleo-ET EX-94**  
Dam of Lot 3



**Golden-Oaks Champ Rae-ET EX-93-3E**  
3rd Dam of Lot 3



## 5 #1 Sexed IVF Undenied Embryos

*Potential 11th Generation EX!*

*Embryos located at Trans Ova in Maryland*

*Dam is fresh again and looks great!*

Johnathan King  
311 King Rd.  
Schuylerville, NY 12871  
518-695-9245  
jkingkrf@gmail.com

**OUR-FAVORITE UNDENIED-ET**

**3125220760 99% RHA TR TP**  
GTPI +2185  
PTA +305M +45F +14P 79%R 4/2018  
PTA +255NM +.12%F +.02%P  
PTA +0.6PL 2.96SCS -0.9DPR 5.0%DCE  
PTA +4.24T +2.32UDC +2.03FLC 79%R 4/2018

**KINGS-RANSOM MOGUL CLEO-ET**

**71140550 100% RHA**  
EX-94 EEEEE 4-10  
4-05 3 365 39,770 4.1 1618 3.2 1263  
3-06 3 290 33,440 4.7 1562 3.2 1074  
2-01 3 365 25,690 4.9 1247 3.5 891  
LIFE 1067 102,120 4.5 4581 3.3 3345

*Full Sister to:*

**Kings-Ransom MG Cleavage-ET EX-95 max score**

**WALNUTLAWN SOLOMON-ET**

**CAN 11775998 TR TV TL TY TD**  
**OUR-FAVORITE UNLIMITED**  
**141851721**  
EX-92

**MOUNTFIELD SSI DCY MOGUL-ET**

**3006972816 TR TP TC TY TV TL TD**  
EX-93 GM  
**GOLDEN-OAKS GWYN CLASSY-ET**  
**69215009**  
EX-92 EEEVE 5-01  
3-05 3 305 31,580 4.1 1284 3.2 1002  
2-04 3 344 29,400 2.8 832 3.1 913  
4-09 2 152 15,750 3.9 619 2.9 456

**3rd Dam: Golden-Oaks Champ Rae-ET EX-93-3E**

6-04 3 365 41,590 4.1 1714 3.0 1240  
LIFE 1455 134,060 4.4 5884 3.2 4269

**4th Dam: Scientific Beauty Rae-ET**

EX-90 DOM  
4-03 2 365 33,710 4.7 1595 3.5 1179

**5th Dam: Scientific Jubilant Rae-ET**

EX-90 DOM  
5-11 3 365 38,880 4.1 1608 3.6 1403

**6th Dam: Hanoverhill Tony Rae**

EX-96-3E GMD DOM 5\*  
6-11 2 365 40,220 4.1 1661 3.3 1331  
LIFE 2247 166,396 4.1 6904 3.4 5612

*HM All-American Jr. 3-Yr-Old 1988*

*Nom. All-American 5-Yr-Old 1991*

**7th Dam: C Hanoverhill TT Roxette-ET**

EX-94-2E GMD DOM  
10-00 3 365 35,040 4.3 1519 3.0 1063

**8th Dam: Mil-R-Mor Roxette**

EX-90 GMD DOM 30\*  
7-01 2 365 24,530 4.7 1153

**9th Dam: C Glenridge Citation Roxy**

EX-97-4E GMD  
10-01 2 365 25,280 4.2 1061  
LIFE 3620 209,784 4.5 9471

*Queen of the Breed I & II*

**10th Dam: C Norton Court Model Vee**

EX-90 6\*  
LIFE 4183 218,629 3.9 8581

*All-American Produce of Dam 1977, 1978 & 1979*

**11th Dam: Norton Court Reflection Vale**

VG-85 5\*  
LIFE 14 lac 249,583 3.7 9295



# ILLINI *Golden Opportunity* SALE



**KHW Regiment Apple-Red-ET EX-96-3E DOM**  
Dam of Lot 4



**Kamps-Hollow Altitude-ET-RC EX-95-2E DOM**  
2nd Dam of Lot 4



## *Apples-PTS Armella-Red-ET\*PC*

Apple Partners, LLC  
John Erbsen  
10974 Benson Rd.  
Lanark, IL 61046  
815-275-4990  
johnerb@aeroinc.net

*Potential 8th Generation EX!*

**Born: September 14, 2017**

**3147207031 100% RHA PC CD TV TL TD**  
GTPI +2021  
PTA -1454M +13F -5P 80%R 4/2018  
PTA +233NM\$ +.26%F +.15%P  
PTA +2.3PL 2.70SCS +0.5DPR 7.0%DCE  
PTA +2.10T +2.67UDC +1.51FLC 80%R 4/2018

**MR ANSLY ADDICTION-P-RED-ET**  
**72128091 100% RHA CD TY TV TL TD**  
GTPI +2043  
PTA -1581M +4F -7P 98%R 4/2018  
PTA +303NM +.25%F +.16%P  
PTA +4.5PL 2.55SCS +2.3DPR 5.2%DCE  
PTA +1.54T +2.23UDC +0.49FLC 97%R 4/2018

**TIGER-LILY LADD P-RED-ET**  
**69405976 PC CD TY TV TL TD**  
EX-91  
**MS APPLES AINSLEY-ET-RC**  
**69822262 CV**  
EX-90

**KHW REGIMENT APPLE-RED-ET**  
**135511521 100% RHA CV TL TD**  
EX-96-4E EEEEE DOM 13-07  
9-01 2 365 36,750 4.3 1582 3.3 1211  
4-01 2 365 35,750 4.7 1682 3.5 1247  
7-00 2 365 33,280 5.0 1654 3.4 1128  
10-11 2 365 31,780 4.5 1440 3.3 1062  
5-03 2 365 30,810 5.0 1527 3.7 1154  
2-02 2 365 28,930 4.5 1297 3.4 979  
LIFE 2898 240,640 4.7 11394 3.6 8559  
*Holstein Int'l Red Impact Cow of the Year 2013*  
*Res. Grand Champ Grand Int'l R&W Show 2013*  
*Grand Champion Grand Int'l R&W Show 2011*  
*All-American R&W Aged Cow 2011*  
*Holstein Int'l World Champion R&W Cow 2010*  
*Nom. All-American R&W 5-Yr-Old 2009*  
*Res. Grand Champ Royal Winter R&W 2009*  
*HHM All-American Jr. 3-Yr-Old 2007*  
*Unanimous All-American Jr. 2-Yr-Old 2006*  
*All-American R&W Jr. 2-Yr-Old 2006*

**CARROUSEL REGIMENT-RED-ET**  
**128891296 TV TL**

**KAMPS-HOLLOW ALTITUDE-ET-RC**  
**129136431 CV TL**  
EX-95-2E EEEEE DOM 7-09  
7-00 2 365 39,690 4.7 1849 3.3 1310  
4-03 2 365 30,430 4.2 1267 3.1 956  
2-00 2 365 28,830 3.8 1097 3.5 1013  
LIFE 1844 144,460 4.4 6295 3.5 5015

**3rd Dam: Clover-Mist Alisha-ET-RC**  
EX-93-3E GMD DOM  
8-07 2 365 36,920 4.2 1553 3.2 1188  
LIFE 2999 226,470 4.7 10,659 3.4 7720  
**4th Dam: Clover-Mist Augy Star-ET \*RC**  
EX-94-4E DOM  
7-10 3 365 43,140 5.0 2136 3.3 1421  
LIFE 2486 206,250 4.7 9793 3.5 7187  
**5th Dam: D-R-A August**  
EX-96-4E DOM  
8-05 3 365 27,460 4.3 1187 3.2 871  
LIFE 3443 190,200 4.4 8281 3.3 4457  
*Nominated All-American Aged Cow 1986*  
*All-Wisconsin Aged Cow 1987*  
**6th Dam: D-R-A Ideal Precious Leader**  
EX-90-2E  
7-06 2 358 20,090 3.9 787 3.2 637  
LIFE 2456 133,250 4.0 5308  
**7th Dam: D-R-A Princess Lad Leader**  
EX-90-3E  
9-05 2 305 19,160 4.2 809

# ILLINI *Golden Opportunity* SALE



**KHW Regiment Apple-Red-ET EX-96-3E DOM**  
2nd Dam of Lots 5, 6, 7 & 8



**Kamps-Hollow Altitude-ET-RC EX-95-2E DOM**  
3rd Dam of Lots 5, 6, 7 & 8



## *Gahms Apple An Aliyah-ET-RC*

Daryld Gahm  
101 S. Jackson St.  
Mount Carroll, IL 61053  
815-291-4099  
dgahm1@hotmail.com

**144388666 100% RHA RC TC TL TD**  
PTPI +2356  
PTA +242M +64F +24P 41%R 4/2018  
PTA +2.9PL 2.96SCS -0.3DPR 5.6%DCE  
PTA +2.39T +2.83UDC +2.34FLC 40%R 4/2018

**Born: September 3, 2017**

*Full Sister to Lot 6*  
*Maternal Sister to Lots 7 & 8*

**BACON-HILL PETY MODESTY-ET**  
**3013654627 100% RHA TR TP TC TY TV**  
**TL TD**  
VG-86 GTPI +2748  
PTA +1612M +90F +55P 84%R 4/2018  
PTA +927NM +.10%F +.02%P  
PTA +6.7PL 3.06SCS +1.3DPR 3.0%DCE  
PTA +1.93T +2.64UDC +2.05FLC 79%R 4/2018

**SIEMERS MOGUL PETY**  
**3010660326 TR TC TY TV TL TD**  
EX-90  
**BACON-HILL SUPRS MODESTY-ET**  
**3010945893**  
VG-85 DOM

**MS APPLE ANABEL-ET-RC**  
**3131999883 100% RHA CV TL TD**  
GTPI +1965  
PTA -1129M +37F -7P 80%R 4/2018  
PTA +123NM +.31%F +.11%P  
PTA -0.9PL 2.86SCS -1.9DPR 8.2%DCE  
PTA +2.85T +3.02UDC +2.62FLC 79%R 4/2018  
*Potential to score VG as a 2-Yr-Old!*

**BLONDIN INTEGRAL-ET-RC**  
**CAN 108109390 TP TY TV TL TD**  
**KHW REGIMENT APPLE-RED-ET**  
**135511521 CV TL TD**  
EX-96-4E EEEEE DOM 13-07  
9-01 2 365 36,750 4.3 1582 3.3 1211  
LIFE 2898 240,640 4.7 11394 3.6 8559  
*Holstein Int'l Red Impact Cow of the Year 2013*  
*Res. Grand Champ Grand Int'l R&W Show 2013*  
*Grand Champion Grand Int'l R&W Show 2011*  
*All-American R&W Aged Cow 2011*  
*Holstein Int'l World Champion R&W Cow 2010*  
*Nom. All-American R&W 5-Yr-Old 2009*  
*Res. Grand Champ Royal Winter R&W 2009*  
*HHM All-American Jr. 3-Yr-Old 2007*  
*Unanimous All-American Jr. 2-Yr-Old 2006*  
*All-American R&W Jr. 2-Yr-Old 2006*

**3rd Dam: Kamps-Hollow Altitude-ET-RC**  
EX-95-2E DOM  
7-00 2 365 39,690 4.7 1849 3.3 1310  
LIFE 1844 144,460 4.4 6295 3.5 5015  
**4th Dam: Clover-Mist Alisha-ET-RC**  
EX-93-3E GMD DOM  
8-07 2 365 36,920 4.2 1553 3.2 1188  
LIFE 2999 226,470 4.7 10,659 3.4 7720  
**5th Dam: Clover-Mist Augy Star-ET \*RC**  
EX-94-4E DOM  
7-10 3 365 43,140 5.0 2136 3.3 1421  
LIFE 2486 206,250 4.7 9793 3.5 7187  
**6th Dam: D-R-A August**  
EX-96-4E DOM  
8-05 3 365 27,460 4.3 1187 3.2 871  
LIFE 3443 190,200 4.4 8281 3.3 4457  
*Nominated All-American Aged Cow 1986*  
*All-Wisconsin Aged Cow 1987*  
**7th Dam: D-R-A Ideal Precious Leader**  
EX-90-2E  
7-06 2 358 20,090 3.9 787 3.2 637  
LIFE 2456 133,250 4.0 5308  
**8th Dam: D-R-A Princess Lad Leader**  
EX-90-3E  
9-05 2 305 19,160 4.2 809



# ILLINI *Golden Opportunity* SALE



Consignor of Lots 6, 7 & 8:  
Daryld Gahm  
101 S. Jackson St.  
Mount Carroll, IL 61053  
815-291-4099  
dgahm1@hotmail.com

## *Gahms Apple An Alisha-ET*

**144327300 100% RHA TR TC TL TD**  
GTPI +2328  
PTA +155M +76F +21P 76%R 4/2018  
PTA +523NMS +.26%F +.06%P  
PTA +2.5PL 2.97SCS -1.1DPR 6.1%DCE  
PTA +2.30T +2.57UDC +2.31FLC 74%R 4/2018

**Born: September 9, 2017**

*Full Sister to Lot 5  
Maternal Sister to Lots 7 & 8*

### **BACON-HILL PETY MODESTY-ET** **3013654627 100% RHA TR TP TC TY TV TL TD**

VG-86 GTPI +2748  
PTA +1612M +90F +55P 84%R 4/2018  
PTA +927NM +.10%F +.02%P  
PTA +6.7PL 3.06SCS +1.3DPR 3.0%DCE  
PTA +1.93T +2.64UDC +2.05FLC 79%R 4/2018

### **MS APPLE ANABEL-ET-RC** **3131999883 100% RHA CV TL TD**

GTPI +1965  
PTA -1129M +37F -7P 80%R 4/2018  
PTA +123NM +.31%F +.11%P  
PTA -0.9PL 2.86SCS -1.9DPR 8.2%DCE  
PTA +2.85T +3.02UDC +2.62FLC 79%R 4/2018  
*Potential to score VG as a 2-Yr-Old!*

### **SIEMERS MOGUL PETY** **3010660326 TR TC TY TV TL TD** EX-90

**BACON-HILL SUPRS MODESTY-ET**  
**3010945893**  
VG-85 DOM

### **BLONDIN INTEGRAL-ET-RC** **CAN 108109390 TP TY TV TL TD**

**KHW REGIMENT APPLE-RED-ET**  
**135511521 CV TL TD**  
EX-96-4E EEEEE DOM 13-07  
9-01 2 365 36,750 4.3 1582 3.3 1211  
LIFE 2898 240,640 4.7 11394 3.6 8559  
*See Lot 5 for extended pedigree*



## *Gahms Apple An Ali-ET-RC*

**144376135 99% RHA RC TC TL TD**  
GTPI +2156  
PTA +717M +45F +32P 77%R 4/2018  
PTA +358NMS +.07%F +.04%P  
PTA +1.7PL 2.92SCS -1.1DPR 6.4%DCE  
PTA +2.07T +1.77UDC +1.79FLC 74%R 4/2018

**Born: December 2, 2017**

*Full Sister to Lot 8  
Maternal Sister to Lots 5 & 6*



## *Gahms Apple An Amy-ET*

**144376667 99% RHA TR TC TL TD**  
GTPI +2280  
PTA +706M +57F +28P 77%R 4/2018  
PTA +437NMS +.11%F +.02%P  
PTA +2.4PL 2.87SCS -0.5DPR 6.1%DCE  
PTA +2.44T +2.35UDC +1.78FLC 74%R 4/2018

**Born: December 1, 2017**

*Full Sister to Lot 7  
Maternal Sister to Lots 5 & 6*

### **S-S-I MONTROSS JEDI-ET** **3123886035 99% RHA TR TP TC TY TV TL TD**

EX-91 GTPI +2716  
PTA +2480M +70F +82P 91%R 4/2018  
PTA +825NM -.08%F +.02%P  
PTA +6.5PL 2.85SCS +1.6DPR 5.1%DCE  
PTA +2.02T +1.71UDC +1.33FLC 80%R 4/2018

### **MS APPLE ANABEL-ET-RC** **3131999883 100% RHA CV TL TD**

GTPI +1965  
PTA -1129M +37F -7P 80%R 4/2018  
PTA +123NM +.31%F +.11%P  
PTA -0.9PL 2.86SCS -1.9DPR 8.2%DCE  
PTA +2.85T +3.02UDC +2.62FLC 79%R 4/2018  
*Potential to score VG as a 2-Yr-Old!*

### **BACON-HILL MONTROSS-ET** **71703339 TR TP TC TY TV TL TD** EX-92 GM

**S-S-I SUPRSIRE MIRI 8679-ET**  
**3011538078 TR TP TL TD**  
VG-89 DOM

### **BLONDIN INTEGRAL-ET-RC** **CAN 108109390 TP TY TV TL TD**

**KHW REGIMENT APPLE-RED-ET**  
**135511521 CV TL TD**  
EX-96-4E EEEEE DOM 13-07  
9-01 2 365 36,750 4.3 1582 3.3 1211  
LIFE 2898 240,640 4.7 11394 3.6 8559  
*See Lot 5 for extended pedigree*



# ILLINI *Golden Opportunity* SALE



**Miss Gold Autumn-Red EX-90**  
Dam of Lot 9



**KHW Regiment Apple-Red-ET EX-96-3E DOM**  
3rd Dam of Lot 9



Holbric Holsteins  
1318 Rt. 23  
Harvard, IL 60033  
815-482-7426  
holbricholsteins@hotmail.com

## *Holbric Dickey Ava-ET-RC*

**Born: January 19, 2016**  
**Fresh: March 2, 2018**  
*Potential 10th Generation EX!*  
**3137154086 100% RHA RC TL TD**

**3rd Dam: KHW Regiment Apple-Red-ET EX-96-3E DOM**  
9-01 2 365 36,750 4.3 1582 3.3 1211  
LIFE 2898 240,640 4.7 11394 3.6 8559  
*Holstein Int'l Red Impact Cow of the Year 2013*  
*Res. Grand Champ Grand Int'l R&W Show 2013*  
*Grand Champion Grand Int'l R&W Show 2011*  
*All-American R&W Aged Cow 2011*  
*Holstein Int'l World Champion R&W Cow 2010*  
*Nom. All-American R&W 5-Yr-Old 2009*  
*Res. Grand Champ Royal Winter R&W 2009*  
*HHM All-American Jr. 3-Yr-Old 2007*  
*Unanimous All-American Jr. 2-Yr-Old 2006*  
*All-American R&W Jr. 2-Yr-Old 2006*  
**4th Dam: Kamps-Hollow Altitude-ET-RC EX-95-2E DOM**  
7-00 2 365 39,690 4.7 1849 3.3 1310  
LIFE 1844 144,460 4.4 6295 3.5 5015  
**5th Dam: Clover-Mist Alisha-ET-RC EX-93-3E GMD DOM**  
8-07 2 365 36,920 4.2 1553 3.2 1188  
LIFE 2999 226,470 4.7 10,659 3.4 7720  
**6th Dam: Clover-Mist Augy Star-ET \*RC EX-94-4E DOM**  
7-10 3 365 43,140 5.0 2136 3.3 1421  
LIFE 2486 206,250 4.7 9793 3.5 7187  
**7th Dam: D-R-A August EX-96-4E DOM**  
8-05 3 365 27,460 4.3 1187 3.2 871  
LIFE 3443 190,200 4.4 8281 3.3 4457  
*Nominated All-American Aged Cow 1986*  
*All-Wisconsin Aged Cow 1987*  
**8th Dam: D-R-A Ideal Precious Leader EX-90-2E**  
7-06 2 358 20,090 3.9 787 3.2 637  
LIFE 2456 133,250 4.0 5308  
**9th Dam: D-R-A Princess Lad Leader EX-90-3E**  
9-05 2 305 19,160 4.2 809



## *Red Leverage Heifer Calf*

**Born: March 2, 2018**

**ERNLO GOLD LYNN DICKEY**  
**65860693 100% RHA TR TY TV TL TD**  
EX-94 GTPI +1630  
PTA -454M +16F +5P 99%R 4/2018  
PTA -134NM +.12%F +.07%P  
PTA -4.4PL 2.91SCS -3.4DPR 6.0%DCE  
PTA +2.13T +0.90UDC +0.31FLC 98%R 4/2018

**BRAEDALE GOLDWYN**  
**CAN 10705608 CD TY TV TL**  
GP-84 GM  
**ERNLO SHEENA LYNN-ET**  
**137676635**  
EX-91-2E DOM

**MISS GOLD AUTUMN-RED**  
**70605601 100% RHA TL TD**  
EX-90 EEEEEV 6-11  
5-10 2 365 26,850 3.3 898 3.4 917  
3-10 2 365 23,340 3.9 905 3.5 814  
LIFE 1638 104,350 3.6 3736 3.4 3555

**MD-VALLEYVUE GOLD CHRIS-ET-RC**  
**137302783 TY TV TL TD**  
EX-92  
**MISS APPLE PIE-RED-ET**  
**139199240**  
EX-91 EEEEEV 3-10  
2-04 2 365 26,580 3.6 961 3.1 835  
3-08 2 305 23,690 3.5 829 3.5 818

# ILLINI *Golden Opportunity* SALE



**Colganados D Avianca-Red-ET EX-92**  
Full Sister to Dam of Lot 10

# 10

## *Colganados-F Deft 1924-ET*

Colganados Genetics, LLC,  
C Felipe Rey & Mario Lopez  
1635 W. Cortland St.  
Chicago, IL 60622  
608-770-5778  
info@colganadosgenetics.com

*Potential 9th Generation VG-EX!*  
3146638239 100% RHA

**Born: September 21, 2017**

**SCIENTIFIC B DEFIANT-ET-RC**  
141123484 100% RHA TP TC TY TV TL TD  
GTP1+1649  
PTA +511M -29F +5P 99%R 4/2018  
PTA -158NM -.17%F -.04%P  
PTA -1.0PL 3.14SCS -2.9DPR 5.9%DCE  
PTA +3.47T +2.46UDC +1.57FLC 98%R 4/2018

**COLGANADOS DESTRY AMARTI-ET-RC**  
3012559760 100% RHA CV TL TD  
VG-85 V+VVV 4-06  
2-08 3 208 8,530 4.7 403 3.5 301

*Full Sister to:*

**Colganados D Avianca-Red-ET EX-92 (pictured)**  
6th 4-Yr-Old Int'l R&W Show 2017  
8th Jr. 2-Yr-Old Int'l R&W Show 2015  
Res. All-American R&W Summer Yrlg 2014

**REGANCREST S BRAXTON-ET**  
61898423 TR TY TV TL TD  
EX-95  
**SCIENTIFIC GOLD DIOR RAE-ET-RC**  
138328405 CV  
EX-92 DOM

**SCIENTIFIC DESTRY-ET-RC**  
138122625 CD TY TV TL  
EX-92  
**KHW REGMNT APPLE A1-RED-ETN**  
70244495 CV TL TD  
VG-87 VEVVV 2-09  
2-04 2 314 20,130 4.8 975 3.7 737

**3rd Dam: Kamps-Hollow Altitude-ET-RC**  
EX-95-2E DOM  
7-00 2 365 39,690 4.7 1849 3.3 1310  
LIFE 1844 144,460 4.4 6295 3.5 5015  
**4th Dam: Clover-Mist Alisha-ET-RC**  
EX-93-3E GMD DOM  
8-07 2 365 36,920 4.2 1553 3.2 1188  
LIFE 2999 226,470 4.7 10,659 3.4 7720  
**5th Dam: Clover-Mist Augy Star-ET \*RC**  
EX-94-4E DOM  
7-10 3 365 43,140 5.0 2136 3.3 1421  
LIFE 2486 206,250 4.7 9793 3.5 7187  
**6th Dam: D-R-A August**  
EX-96-4E DOM  
8-05 3 365 27,460 4.3 1187 3.2 871  
LIFE 3443 190,200 4.4 8281 3.3 4457  
*Nominated All-American Aged Cow 1986*  
*All-Wisconsin Aged Cow 1987*  
**7th Dam: D-R-A Ideal Precious Leader**  
EX-90-2E  
7-06 2 358 20,090 3.9 787 3.2 637  
LIFE 2456 133,250 4.0 5308  
**8th Dam: D-R-A Princess Lad Leader**  
EX-90-3E  
9-05 2 305 19,160 4.2 809



# ILLINI *Golden Opportunity* SALE



**Golden-Oaks Line Em Up-ET VG-87-2Y**  
Dam of Lot 11



**Gloryland-I Goldwyn Locket-ET EX-94-2E**  
2nd Dam of Lot 11



## *Golden-Oaks TopoftheLine-ET*

Golden Oaks Farm  
PO Box 37  
Wauconda, IL 60084-0037  
847-224-7861  
cheinzmann@crowns-chicago.com

### Potential 12th Generation VG-EX!

**3143012725 99% RHA TR CD TP TL TD**  
GTPI +2310  
PTA +1028M +28F +27P 78%R 4/2018  
PTA +379NMS -.04%F -.02%P  
PTA +2.9PL 2.68SCS -.02DPR 4.7%DCE  
PTA +3.72T +3.04UDC +1.74FLC 77%R 4/2018

Born: October 14, 2017

**MORNINGVIEW MCC KINGBOY-ET**  
**72044077 99% RHA TR TP TC TY TV TL TD**  
GTPI +2453  
PTA +1213M +47F +40P 99%R 4/2018  
PTA +521NM +.01%F +.01%P  
PTA +3.1PL 2.69SCS +1.0DPR 3.8%DCE  
PTA +3.21T +2.63UDC +1.25FLC 99%R 4/2018

**DE-SU BKM MCCUTCHEN 1174-ET**  
**69990138 TR TP TC TY TV TL TD**  
EX-93 GM  
**MORNINGVIEW SUPER MEGAN-ET**  
**68654508 TY**  
EX-91 DOM

**3rd Dam: Gloryland Lakota Rae-ET**  
VG-88 DOM  
2-03 2 365 22,850 3.8 857 3.3 751  
**4th Dam: Gloryland Lana Rae**  
EX-94-2E DOM  
5-06 2 365 29,011 4.0 1159 3.4 993  
**5th Dam: Scientific Liza Rae-ET**  
EX-90  
4-09 2 365 26,710 2.9 768 3.1 827  
**6th Dam: Hanoverhill Tony Rae**  
EX-96-3E GMD DOM 5\*  
6-11 2 365 40,220 4.1 1661 3.3 1331  
LIFE 2247 166,396 4.1 6904 3.4 5612  
*HM All-American Jr. 3-Yr-Old 1988*  
*Nom. All-American 5-Yr-Old 1991*  
**7th Dam: C Hanoverhill TT Roxette-ET**  
EX-94-2E GMD DOM  
10-00 3 365 35,040 4.3 1519 3.0 1063  
**8th Dam: Mil-R-Mor Roxette**  
EX-90 GMD DOM 30\*  
7-01 2 365 24,530 4.7 1153  
**9th Dam: C Glenridge Citation Roxy**  
EX-97-4E GMD  
10-01 2 365 25,280 4.2 1061  
LIFE 3620 209,784 4.5 9471  
*Queen of the Breed I & II*  
**10th Dam: C Norton Court Model Vee**  
EX-90 6\*  
LIFE 4183 218,629 3.9 8581  
*All-American Produce of Dam 1977, 1978 & 1979*  
**11th Dam: Norton Court Reflection Vale**  
VG-85 5\*  
LIFE 14 lac 249,583 3.7 9295

**GOLDEN-OAKS LINE EM UP-ET**  
**3132672255 99% RHA**  
VG-87 VVVVV 2-06 GTPI +2234  
PTA +426M +24F +20P 79%R 4/2018  
PTA +330NM +.03%F +.03%P  
PTA +2.9PL 2.50SCS -1.3DPR 4.8%DCE  
PTA +3.70T +2.68UDC +2.28FLC 79%R 4/2018  
*Nom. All-American Fall Yrlg 2017*  
*4th Fall Yrlg World Dairy Expo 2017*

**VAL-BISSON DOORMAN-ET**  
**CAN 107281711 TR TP TY TV TL TD**  
EX-90  
**GLORYLAND-I GOLDWYN LOCKET-ET**  
**CLORY 9988715**  
EX-94-2E EEEEE 7-00  
4-11 3 365 37,310 5.0 1855 3.4 1264  
3-07 3 365 36,640 4.3 1581 3.4 1240  
6-06 3 349 35,800 4.4 1590 3.5 1242  
1-11 2 365 25,011 4.9 1221 3.4 851  
LIFE 137,901 4.6 6400 3.4 4719

Full Sister to:  
**Walkerbrae Doorman Locket-ET EX-92**  
*Nominated All-American Jr. 3-Year-Old 2016*  
*Nominated All-Canadian Jr. 3-Yr-Old 2016*

# ILLINI *Golden Opportunity* SALE



**Oakfield Door Raindrop-ET**  
Maternal Sister to Lot 12



**Craigcrest Rubies Rachele-ET EX-94**  
Dam of Lot 12

**12**

## *Oakfield Solom Romantic-ET*

Jonathan & Alicia Lamb  
6880 Albion Rd.  
Oakfield, NY 14125  
585-704-2501  
jllacc@rochester.rr.com

3134445038 99% RHA

Born: September 1, 2017

*Maternal Sister by Doorman (pictured)*  
**Oakfield Door Raindrop-ET**  
*HHM All-New York Winter Calf 2017*  
*Jr. All-New York Winter Calf 2017*

**WALNUTLAWN SOLOMON-ET**  
CAN 11775998 TR TP TY TV TL TD  
GTPI+2047  
PTA+101M +21F +12P 91%R 4/2018  
PTA+138NM +.06%F +.03%P  
PTA -0.6PL 2.88SCS -0.5DPR 6.5%DCE  
PTA +3.70T +2.48UDC +1.75FLC 86%R 4/2018

**VAL-BISSON DOORMAN-ET**  
CAN 107281711 TR TP TY TV TL TD  
EX-90  
**MISTY SPRINGS LAVANGUARD SUE**  
CAN 9979603  
VG-89

**CRAIGCREST RUBIES RACHELLE-ET**  
CAN 11732999 TR TL TD  
EX-94 EEEEE 4-11  
2-11 3 330 24,320 4.0 972 3.3 796  
3-10 2 305 24,270 4.1 990 3.3 812  
2-01 3 331 20,990 4.0 848 3.2 675  
*HM All-American Jr. 3-Yr-Old 2016*  
*Unanimous All-New York Jr. 3-Yr-Old 2016*  
*Res. All-New York Jr. 2-Yr-Old 2015*

**BRAEDALE GOLDWYN**  
CAN 10705608 CD TY TV TL  
GP-84 GM  
**MONTDALE DUNDEE RUBIE-TW**  
CAN 8502119  
EX-93  
4-08 2 329 27,691 4.1 1135 3.1 868  
2-05 2 365 27,608 4.0 1102 3.3 898  
5-07 2 365 27,063 3.9 1053 3.1 844

**3rd Dam: K A S Carlton Ruby**  
EX-91-5E 9\*  
6-03 2 365 30,593 4.0 1232 2.9 887  
LIFE 8 lact 188,074 3.7 6986 2.8 5266  
**4th Dam: K A S Status Quo Closure**  
EX-90 3\*  
9-10 2 309 19,178 3.8 721 2.7 518  
LIFE 14 lact 222,638 4.2 9416 3.0 6679

*Full Sister to:*  
**Craigcrest Rubies Gold Rejoice EX-94**  
*All-American & All-Canadian Sr. 2-Yr-Old 2011*



# ILLINI *Golden Opportunity* SALE



**Danville-ML Margaux-ET EX-94**  
Dam of Lot 13

**13**

## *OCD Goldwyn Marcy-ET*

Nate Janssen & Brian Wesemann  
1936 Chippewa Dr.  
Wheaton, IL 60189  
847-224-7859  
natejanssen@yahoo.com

*Potential 9th Generation EX!*  
**3134444766 100% RHA**  
*1st Fall Calf IL State Fair 2017*

**Born: September 5, 2016**

**Due: September 1, 2018 to 7HO13730**  
**Our-Favorite Undenied-ET +4.24T**  
**ultrasounded heifer**

**BRAEDALE GOLDWYN**  
**CAN 10705608 100% RHA CD TY TV TL**  
GTPI+1858  
PTA -334M +13F +2P 99%R 4/2018  
PTA +117NM +.10%F +.05%P  
PTA -0.1PL 2.75SCS -0.9DPR 6.1%DCE  
PTA +1.72T +1.44UDC +1.35FLC 99%R 4/2018

**DANVILLE-ML MARGAUX-ET**  
**136346933 100% RHA TV**  
EX-94 EEEEE 5-11  
3-07 2 365 31,500 4.1 1277 3.2 1012  
5-00 2 365 30,560 3.6 1093 3.1 951  
2-07 3 282 25,390 3.7 928 3.0 766

**SHOREMAR JAMES**  
**CAN 5902195 TV TL**  
GP-81 GM  
**BRAEDALE BALER TWINE-ETS**  
**CAN 6860888 TL**  
VG-86

**REGANCREST ELTON DURHAM-ET**  
**2250783 TR CV TL**  
EX-90 GM  
**MAYERLANE-DK MY MARIA-ET**  
**124416149**  
EX-92-2E EEE+E GMD 8-03  
3-05 3 365 40,070 3.9 1548 2.9 1156  
7-04 3 365 37,230 3.9 1446 2.7 1001  
4-07 3 305 35,030 3.8 1340 2.6 927  
2-02 3 365 32,020 3.8 1222 2.9 936  
10-07 3 221 17,080 3.9 7331 2.8 5357  
LIFE 2067 189,590 3.9 7331 2.8 5357

**3rd Dam: Golden-Oaks Mark Marion-ET**  
EX-92-2E GMD DOM  
5-09 3 365 46,420 4.0 1838 2.9 1352  
LIFE 3282 299,230 3.7 10951 3.0 9023  
**4th Dam: Ogden Hanover Sex Prudence-ET**  
EX-91 DOM  
3-02 2 365 23,980 4.6 1108 3.5 830  
**5th Dam: Dreamstreet Rorae Pocohontis**  
EX-93-2E GMD DOM  
5-10 2 365 28,290 4.0 1132 3.1 890  
**6th Dam: Sher-Mar Highmark Hiawatha**  
EX-94-4E GMD DOM  
6-10 2 365 37,470 5.0 1869 1.8 685  
LIFE 2496 156,568 4.0 6260 3.0 857  
**7th Dam: Sher-Mar Lee Mitzi**  
EX-91-4E GMD DOM  
7-11 2 365 41,390 4.2 1731  
LIFE 2683 200,450 3.6 7290  
**8th Dam: Sher-Mar Mingo Mimi**  
EX-90-2E  
11-11 2 365 28,430 4.0 1146  
LIFE 2738 161,990 3.9 6284  
**9th Dam: Sher-Mar Misty Jo**  
VG-85  
4-06 2 304 15,980 4.0 636

# ILLINI *Golden Opportunity* SALE



**Comestar Larion Goldwyn-ET EX-92**  
Dam of Lot 14

**14**

## *Sun-Made Larions Savanna-ET*

Dr. Chris Keim  
N765 Waubunsee Trl. Unit 1  
Fort Atkinson, WI 53538  
414-573-8682  
chris@sunshinegenetics.com

3125327755 99% RHA TC TL TD

Born: September 9, 2017

**WALNUTLAWN SOLOMON-ET**  
CAN 11775998 TR TP TY TV TL TD  
GTPI+2047  
PTA +101M +21F +12P 91%R 4/2018  
PTA +138NM +.06%F +.03%P  
PTA -0.6PL 2.88SCS -0.5DPR 6.5%DCE  
PTA +3.70T +2.48UDC +1.75FLC 86%R 4/2018

**VAL-BISSON DOORMAN-ET**  
CAN 107281711 TR TP TY TV TL TD  
EX-90  
**MISTY SPRINGS LAVANGUARD SUE**  
CAN 9979603  
VG-89

**COMESTAR LARION GOLDWYN-ET**  
CAN 107869959 100% RHA TL TD  
EX-92 EEEVEE 4-03  
3-08 2 365 33,600 3.7 1228 3.2 1089  
2-05 2 305 28,520 3.9 1124 3.2 903  
*Unanimous All-American Fall Yrlg 2014*  
*All-Canadian Sr. Yrlg 2014*  
*Ready to calve again and looks good!*

**BRAEDALE GOLDWYN**  
CAN 10705608 CD TY TV TL  
GP-84 GM  
**LYLEHAVEN ROY LARI**  
64890721  
VG-88  
4-06 2 365 45,748 4.0 1847 2.8 1289  
3-01 2 365 36,995 3.4 1261 2.8 1026  
1-11 2 357 26,929 3.7 985 2.8 767  
LIFE 1354 129,807 3.8 4969 2.9 3746

**3rd Dam: Lylehaven Damion Lynx-ET**  
EX-94  
4-04 3 365 37,750 5.1 1921 3.0 1137  
**4th Dam: Thiersant Lili Starbuck-ET**  
EX-94-5E  
9-11 2 365 30,910 4.5 1385 3.1 965  
**5th Dam: Ivyhall Astro Jet Ronie**  
VG-86  
5-04 2 305 18,472 4.2 769 3.1 578



# ILLINI *Golden Opportunity* SALE



**Holbric Destry Analiese-RC EX-94-2E**  
Dam of Lot 15



**Holbric Genuine Antoinette EX-94-3E**  
2nd Dam of Lot 15

**15**

## *Holbric Ammo Ava-Red-ET*

Oertel Farms, Inc.  
Jason Oertel  
32633 Delhi Rd.  
Brighton, IL 62012  
618-779-9060  
jtoertel@sbcglobal.net

*Potential 10th Generation VG-EX!*  
3132219792 99% RHA

**Born: December 8, 2017**

**MR LEANINGHOUSE AMMO-P-RC**  
**74146951 99% RHA PC TC TY TV TL TD**  
GTPI +2168  
PTA +728M +33F +25P 79%R 4/2018  
PTA +272NM +.02%F +.01%P  
PTA +0.8PL 2.88SCS -1.2DPR 4.3%DCE  
PTA +3.15T +2.82UDC +1.72FLC 79%R 4/2018

**HOLBRIC DESTRY ANALIESE-RC**  
**69319237 TL TD**  
EX-94-2E EE+EE 6-07  
3-01 2 363 33,660 4.0 1361 3.4 1158  
4-02 2 365 33,270 3.9 1286 3.4 1137  
5-11 2 305 29,330 3.9 1134 3.1 921  
2-01 2 339 25,020 4.0 1004 3.4 849  
LIFE 1595 132,270 4.0 5304 3.4 4517  
*Nom. Junior All-American Jr. 3-Yr-Old 2013*  
*2nd World Dairy Expo Futurity 2013*  
*Nom. Junior All-American Jr. 2-Yr-Old 2012*  
*HHM All-American Jr. Best 3 Females 2011*

**MORNINGVIEW MCC KINGBOY-ET**  
**72044077 TR TP TC TY TV TL TD**  
EX-92  
**MS ROLL-N-VIEW ALTHEA-RED-ET**  
**72193370 PC TV TL TD**  
EX-91

**SCIENTIFIC DESTRY-ET-RC**  
**138122625 TV TL TY**  
EX-92  
**HOLBRIC GENUINE ANTOINETTE**  
**64702853**  
EX-94-2E EEEVE 6-03  
6-01 2 365 38,040 3.9 1493 3.1 1181  
4-09 2 365 37,040 4.7 1750 3.3 1240  
3-02 2 305 28,940 4.6 1332 3.1 894  
2-02 2 343 23,550 4.3 1005 3.1 722  
LIFE 1993 158,630 4.5 7196 3.3 5265

**3rd Dam: Holbric Admiration-RC**  
VG-88  
2-10 2 365 32,620 4.2 1385 3.5 1137  
LIFE 141,350 4.1 5850 3.4 4812  
**4th Dam: Holbric Linjet Admire-ET**  
VG-86  
2-02 2 305 22,020 3.9 855 3.2 701  
**5th Dam: Holbric Broker Adrian**  
VG-87 DOM  
4-03 2 365 27,270 4.3 1165 3.2 870  
LIFE 102,030 4.1 4225 3.1 3171  
*Res. All-Illinois Jr. 2-Yr-Old 1996*  
**6th Dam: Hart-Two-Hart Mark Angella**  
EX-94-2E GMD DOM  
4-02 3 365 42,030 3.5 1487 3.0 1259  
*Junior All-American 4-Yr-Old 1993*  
*Grand Champion WDE Junior Show 1992*  
*Res. Junior All-American Sr. 3-Yr-Old 1992*  
**7th Dam: Hart-Two-Hart S-W-D Angella-ET**  
VG-86  
5-08 2 305 21,660 4.2 916 3.3 720  
**8th Dam: Larimore Elevation Amanda**  
EX-90 DOM  
11-05 2 365 33,030 4.0 1315 3.2 1073  
LIFE 213,950 3.9 8292  
**9th Dam: Larimore Brent Missi Mandy**  
VG-86  
6-07 2 305 24,600 4.0 982  
LIFE 111,690 3.8 4199

# ILLINI *Golden Opportunity* SALE



**T-Spruce Josette-ET VG-85-3Y +2746GTPI**  
Dam of Lot 16

# 16

## Peak Isette Eldrdo 80767-ET

PEAK Genetics  
Scott Culbertson, Sale Manager  
N8350 High Rd.  
Watertown, WI 53094  
507-923-1881  
scott.culbertson@altagenetics.com

**3145229930 99% RHA**

**Born: October 25, 2017**

GTPI +2697  
PTA +1868M +108F +73P 75%R 4/2018  
PTA +888NMS +.13%F +.06%P  
PTA +5.4PL 2.96SCS +0.2DPR 4.0%DCE  
PTA +1.33T +1.07UDC +0.54FLC 75%R 4/2018

### DG ALBERO ELDORADO

**NLD 736800220 100% RHA TY TV TL**  
GTPI +2599  
PTA +2173M +86F +73P 79%R 4/2018  
PTA +773NM +.02%F +.02%P  
PTA +4.5PL 2.96SCS -0.3DPR 4.2%DCE  
PTA +1.80T +1.52UDC +1.19FLC 78%R 4/2018

### BACON-HILL MONTROSS-ET

**71703339 TR TP TC TY TV TL TD**  
EX-92 GM  
**ALL NURE SUPERSIRE ELEONOR-ET**  
**ITA 33990320525**

### T-SPRUCE JOSETTE-ET

**74118157 99% RHA TR TP TC TY TV TL TD**  
VG-85 +VV++ 3-00 GTPI +2746  
PTA +1935M +79F +74P 81%R 4/2018  
PTA +891NM +.02%F +.05%P  
PTA +6.8PL 2.73SCS +0.6DPR 3.5%DCE  
PTA +1.90T +1.73UDC +1.05FLC 82%R 4/2018  
2-03 2 269 19,948 3.6 733 3.5 703 inc.

### UEKER SUPERSIRE JOSUPER-ET

**70726929 TC TY TV TL TD**  
GM  
**EDG RILEY GALAXY 2364-ET**  
**72437911 TY**  
VG-85 VV++V DOM 2-11  
3-07 3 305 47,690 3.5 1678 3.1 1482  
2-03 3 305 36,720 3.7 1355 3.3 1199  
LIFE 101,120 3.6 3685 3.3 3313

### 3rd Dam: Co-Vista Robust Riley

EX-90 GMD DOM  
2-01 2 305 27,530 3.9 1069 3.3 920

### 4th Dam: Ms Pride Gold Invite

**5th Dam: Regancrest Shottle Ii-ET**  
VG-88 DOM  
3-08 2 364 32,390 3.6 1150 2.9 931  
LIFE 101,250 3.5 3567 3.0 2997

### 6th Dam: Regancrest Ito Isa

VG-86 GMD  
2-00 2 365 31,510 3.6 1143 3.3 1051

### 7th Dam: Regancrest Emory Dorissa-ET

VG-86 GMD DOM  
6-05 2 365 40,890 3.8 1545 3.2 1313  
LIFE 158,030 3.9 6129 3.4 5312

### 8th Dam: Snow-N Denises Dellia

EX-95-2E GMD DOM  
7-06 2 365 35,610 4.0 1431 3.1 1103  
LIFE 113,640 4.0 4555 3.4 3822

### 9th Dam: Snow-N Dorys Denise

EX-90-2E GMD DOM  
5-09 2 365 33,350 3.8 1256 3.1 1038  
LIFE 114,010 3.6 4153 3.2 3649



# ILLINI *Golden Opportunity* SALE



**No-Fla Expo-ET +2783GTPI**  
Dam of Lot 17

**17**

## *Peak Expo Eldrdo 80669-ET*

PEAK Genetics  
Scott Culbertson, Sale Manager  
N8350 High Rd.  
Watertown, WI 53094  
507-923-1881  
scott.culbertson@altagenetics.com

**3145229832 100% RHA TR TP TC TL TD**  
GTPI +2788  
PTA +2209M +96F +77P 75%R 4/2018  
PTA +964NMS +.05%F +.04%P  
PTA +7.7PL 3.00SCS +1.4DPR 3.8%DCE  
PTA +1.61T +1.61UDC +1.41FLC 73%R 4/2018

**Born: September 5, 2017**

**DG ALBERO ELDORADO**  
**NLD 736800220 100% RHA TY TV TL**  
GTPI +2599  
PTA +2173M +86F +73P 79%R 4/2018  
PTA +773NM +.02%F +.02%P  
PTA +4.5PL 2.96SCS -0.3DPR 4.2%DCE  
PTA +1.80T +1.52UDC +1.19FLC 78%R 4/2018

**BACON-HILL MONTROSS-ET**  
**71703339 TR TP TC TY TV TL TD**  
EX-92 GM  
**ALL NURE SUPERSIRE ELEONOR-ET**  
**ITA 33990320525**

**NO-FLA EXPO-ET**  
**3132343916100% RHAT RTPCTYTVTLTD**  
GTPI +2783  
PTA +2043M +76F +64P 80%R 4/2018  
PTA +936NM +.01%F +.01%P  
PTA +8.7PL 3.00SCS +2.4DPR 4.0%DCE  
PTA +1.98T +2.47UDC +1.95FLC 77%R 4/2018  
*Just fresh and looks great!*

**BACON-HILL MONTROSS-ET**  
**71703339 TR TP TC TY TV TL TD**  
EX-92 GM  
**NO-FLA ROBUST RHOLOND 33758**  
**3009976925**  
VG-86 V+V+E 3-09  
3-03 3 324 32,160 3.5 1112 3.1 996  
4-03 3 305 29,490 4.1 1207 3.1 922  
1-09 3 305 21,650 3.5 754 3.2 695

# ILLINI *Golden Opportunity* SALE



**EDG Riley Uno 18028-ET VG-88 DOM**  
2nd Dam of Lot 18

**18**

*1st Choice Imax Female*

Golden Oaks Farm  
PO Box 37  
Wauconda, IL 60084-0037  
847-224-7861  
cheinzmann@crowm-chicago.com

Choice of 4 Calves

*Genomic results for calves available on sale day, first two tested over +2700GTPI*

**SILVERRIDGE V IMAX**  
CAN 12264620 99% RHA TR TPTY TV TL TD  
GTPI +2694  
PTA +1707M +89F +56P 80%R 4/2018  
PTA +827NM +.09%F +.01%P  
PTA +5.9PL 2.93SCS -0.1DPR 2.6%DCE  
PTA +2.39T +2.81UDC +1.52FLC 78%R 4/2018

**GENOSOURCE JEDI 35158-ET**  
3137839303 99% RHA  
GTPI +2668  
PTA +1508M +68F +56P 77%R 4/2018  
PTA +774NM +.04%F +.04%P  
PTA +6.7PL 2.87SCS +3.2DPR 5.5%DCE  
PTA +2.08T +2.09UDC +1.40FLC 75%R 4/2018

**WESTENRADE ALTASPRING**  
NLD 949033666 TR TP TC TY TV TL TD  
**SILVERRIDGE V MOGUL EVON-ET**  
CAN 11638915  
VG-87

**S-S-I MONTROSS JEDI-ET**  
3123886035 TR TP TC TY TV TL TD  
EX-91  
**EDG RILEY UNO 18028-ET**  
3012559773 TR TP TL TD  
VG-88 VVVVE DOM 4-03  
3-08 3 305 28,750 4.9 1400 3.4 980

**3rd Dam: Co-Vista Robust Riley**  
EX-90 GMD DOM  
2-01 2 305 27,530 3.9 1069 3.3 920  
**4th Dam: Ms Pride Gold Invite**  
**5th Dam: Regancrest Shottle Ii-ET**  
VG-88 DOM  
3-08 2 364 32,390 3.6 1150 2.9 931  
LIFE 101,250 3.5 3567 3.0 2997  
**6th Dam: Regancrest Ito Isa**  
VG-86 GMD  
2-00 2 365 31,510 3.6 1143 3.3 1051  
**7th Dam: Regancrest Emory Dorissa-ET**  
VG-86 GMD DOM  
6-05 2 365 40,890 3.8 1545 3.2 1313  
LIFE 158,030 3.9 6129 3.4 5312  
**8th Dam: Snow-N Denises Dellia**  
EX-95-2E GMD DOM  
7-06 2 365 35,610 4.0 1431 3.1 1103  
LIFE 113,640 4.0 4555 3.4 3822  
**9th Dam: Snow-N Dorys Denise**  
EX-90-2E GMD DOM  
5-09 2 365 33,350 3.8 1256 3.1 1038  
LIFE 114,010 3.6 4153 3.2 3649



# ILLINI *Golden Opportunity* SALE



**Cookiecutter Harmony-ET +2634GTPI**  
Dam of Lots 19 & 20

19

*6 #1 IVF Female Montoya Embryos*

20

*6 #1 IVF Female Jared Embryos*

Bovine Genomic Partners  
Jason C. Lamoreaux  
11628 Old Belding Rd. NE  
Belding, MI 48809  
616-822-0101  
jlamauction@gmail.com

**SIRE OF LOT 19:**

**PEAK ALTAMONTOYA-ET**  
**313440707999% RHATRTPTCTYTVTLTD**  
GTPI +2757  
PTA +2019M +104F +79P 76%R 4/2018  
PTA +877NM +.10%F +.06%P  
PTA +5.2PL 2.76SCS -0.2DPR 5.4%DCE  
PTA +2.05T +1.81UDC +0.84FLC 75%R 4/2018  
*AltaMoreno x Supersire*

**COOKIECUTTER HARMONY-ET**  
**3134739176 100% RHA TY TV TL TD**

GTPI +2634  
PTA +1521M +80F +54P 78%R 4/2018  
PTA +785NM +.08%F +.03%P  
PTA +5.6PL 2.80SCS +0.2DPR 4.4%DCE  
PTA +2.32T +2.15UDC +1.88FLC 76%R 4/2018  
*Due this summer and looks tremendous!*

**SIRE OF LOT 20:**

**CLEAR-ECHO JED JARED 745-ET**  
**3127565651 99% RHATPTRTC TY TV TL TD**  
GTPI +2786  
PTA +1625M +81F +62P 78%R 4/2018  
PTA +897NM +.07%F +.04%P  
PTA +7.2PL 2.72SCS +3.3DPR 3.4%DCE  
PTA +1.90T +1.90UDC +0.91FLC 76%R 4/2018  
*Jedi x Kingboy*

**BACON-HILL PETY MODESTY-ET**  
**3013654627 TR TP TC TY TV TL TD**

VG-86  
**COOKIECUTTER DAY HALEY-ET**  
**3011584606**  
VG-88 VEVVE 3-09  
2-00 3 365 35,140 3.9 1379 3.2 1126  
3-03 3 365 31,900 4.4 1401 3.2 1031

**3rd Dam: Cookiecutter MOM Halo-ET**  
VG-88 DOM  
2-00 3 365 35,280 5.2 1819 3.5 1237  
**4th Dam: Cookiecutter Gld Holler-ET**  
VG-88 DOM  
2-03 3 365 40,730 3.5 1410 2.9 1172  
**5th Dam: Ms Kngs-Rnsm Champ Haley-ET**  
EX-90 GMD DOM  
3-11 3 365 43,690 3.7 1625 2.9 1274  
**6th Dam: Regancrest-JDV Hanna-ET**  
EX-90 GMD DOM  
4-07 3 365 45,110 4.3 1922 3.0 1364  
**7th Dam: Long-Haven Rudolph Dec-ET**  
EX-90-2E GMD DOM  
5-04 2 365 34,650 3.8 1332 3.1 1089  
LIFE 2306 166,900 4.3 7099 3.3 5569  
**8th Dam: Regancrest Elton Disrael-ET**  
VG-88 GMD DOM  
2-04 2 365 33,617 4.5 1499 3.3 1105  
**9th Dam: Snow-N Denises Dellia**  
EX-95-2E GMD DOM  
7-06 2 365 35,610 4.0 1431 3.1 1103  
LIFE 113,640 4.0 4555 3.4 3822  
**9th Dam: Snow-N Dorys Denise**  
EX-90-2E GMD DOM  
5-09 2 365 33,350 3.8 1256 3.1 1038  
LIFE 114,010 3.6 4153 3.2 3649

# ILLINI *Golden Opportunity* SALE



**View-Home Uno Hope-ET EX-92 DOM**  
Dam of Lots 21 & 22



**Pine-Tree 2149Robst 4846-ET VG-86 DOM**  
2nd Dam of Lots 21 & 22, 3rd Dam of Lot 23

**21**

**BGP Helix Hopeful-ET**

**Born: March 29, 2017**  
*Maternal Sister to Lot 22*  
*Potential 11th Generation VG-EX!*

**3143159826 100% RHA TR TL TD**

GTPI +2540

PTA +424M +88F +43P 76%R 4/2018

PTA +648NMS +.26%F +.11%P

PTA +2.9PL 2.84SCS +0.7DPR 4.6%DCE

PTA +2.56T +2.07UDC +1.13FLC 75%R 4/2018

**22**

**BGP Flagship Heaven-ET**

**Born: March 17, 2017**  
*Maternal Sister to Lot 21*

*Potential 11th Generation VG-EX!*

**3143159820 99% RHA TR TL TD**

GTPI +2461

PTA +246M +63F +31P 76%R 4/2018

PTA +597NMS +.20%F +.09%P

PTA +4.2PL 2.82SCS +2.6DPR 3.6%DCE

PTA +2.21T +1.50UDC +1.22FLC 75%R 4/2018

**SIRE OF LOT 22:**

**S-S-I 1STCLASS FLAGSHIP-ET**

**3127943686 99% RHATRPTCTY TV TL TD**

GTPI +2610

PTA +707M +66F +39P 80%R 4/2018

PTA +748NM +.14%F +.06%P

PTA +6.7PL 2.64SCS +2.4DPR 4.9%DCE

PTA +2.14T +2.27UDC +1.49FLC 80%R 4/2018

*Alta1stClass x Supersire*

Bovine Genomic Partners  
Jason C. Lamoreaux  
11628 Old Belding Rd. NE  
Belding, MI 48809  
616-822-0101  
jlamauction@gmail.com

**SIRE OF LOT 21:**

**AOT SILVER HELIX-ET**

**3131083927 100% RHA TR TP TY TV TL TD**

GTPI +2614

PTA +1409M +103F +59P 80%R 4/2018

PTA +761NM +.18%F +.06%P

PTA +4.0PL 2.95SCS -1.0DPR 4.9%DCE

PTA +2.15T +2.37UDC +1.01FLC 79%R 4/2018

*Silver x Supersire*

**VIEW-HOME UNO HOPE-ET**

**72364645 100% RHA TL TD**

EX-92 EEEEE DOM 4-03

2-00 2 365 25,810 4.7 1209 3.5 899

*Multiple grand-dtrs & sons over 2900GTPI 1000NMS*

**AMIGHETTI NUMERO UNO-ET**

**ITA 17990915143 TR TP TY TV TL TD**

GM

**PINE-TREE 2149ROBST 4846-ET**

**69804610**

VG-86 EEV+V DOM 6-07

2-04 3 365 32,000 4.8 1520 3.2 1036

**3rd Dam: Pine-Tree Zenith Sheen**

VG-87 DOM

1-11 3 305 24,500 3.9 959 3.0 740

**4th Dam: Pine-Tree Martha Sheen-ET**

VG-86 DOM

1-11 3 365 31,210 4.2 1305 3.1 968

**5th Dam: Pine-Tree Missy Martha-ET**

VG-86 GMD DOM

2-02 3 365 34,730 3.6 1266 3.1 1070

**6th Dam: Wesswood-HC Rudy Missy-ET**

EX-92-3E GMD DOM

4-11 3 365 40,880 4.1 1665 3.4 1385

*Global Cow of the Year 2014*

**7th Dam: Wesswood Elton Mimi**

EX-90 GMD DOM

3-05 2 365 35,380 3.3 1160 3.0 1054

**8th Dam: Wesswood Mandingo Ivy**

VG-87

6-05 2 365 36,330 3.6 1305 2.8 1018

LIFE 1835 144,060 3.4 4933 2.9 4139

**9th Dam: Wesswood Astro Matt Ester**

VG-87 GMD DOM

LIFE 1847 140,110 3.6 5029 3.0 4158

**10th Dam: Wesswood Bell Claudette**

VG-87 GMD DOM

9-10 2 365 38,810 3.6 1383 2.9 1140

LIFE 3634 280,980 3.6 9997 2.9 8092



# ILLINI *Golden Opportunity* SALE



**View-Home 1st Delphinium-ET VG-85-2Y**  
Dam of Lot 23

# 23

## *BGP Helix Dynamite-ET*

Bovine Genomic Partners  
Jason C. Lamoreaux  
11628 Old Belding Rd. NE  
Belding, MI 48809  
616-822-0101  
jlamauction@gmail.com

**3143159853 99% RHA TR TL TD**

**Born: May 7, 2017**

GTPI +2399  
PTA +1146M +62F +39P 75%R 4/2018  
PTA +576NMS +.07%F +.01%P  
PTA +3.7PL 2.88SCS -0.4DPR 4.6%DCE  
PTA +2.47T +2.96UDC +0.38FLC 74%R 4/2018

**AOT SILVER HELIX-ET**

**3131083927 100% RHA TR TP TY TV TL TD**  
GTPI +2614  
PTA +1409M +103F +59P 80%R 4/2018  
PTA +761NM +.18%F +.06%P  
PTA +4.0PL 2.95SCS -1.0DPR 4.9%DCE  
PTA +2.15T +2.37UDC +1.01FLC 79%R 4/2018

**SEAGULL-BAY SILVER-ET**

**72156794 TC TY TV TL TD**  
GM  
**COOKIECUTTER SSIRE HAS-ET**  
**3012489198**  
VG-88 DOM

**VIEW-HOME 1ST DELPHINIUM-ET**

**3130853949 99% RHA**  
VG-85-2Y VG-MS CAN GTPI +2330  
PTA +543M +36F +25P 78%R 4/2018  
PTA +488NM +.06%F +.03%P  
PTA +4.0PL 2.69SCS -0.2DPR 3.5%DCE  
PTA +2.80T +3.11UDC +0.96FLC 78%R 4/2018  
2-02 3 238 24,326 4.0 963 2.9 705 inc.

**ZAHBULLS ALTA1STCLASS-ET**

**71441918 TR TP TC TY TV TL TD**  
**VIEW-HOME MCC ALABAMA-ET**  
**72456685 TL TD**  
GP-82 +V+FV 3-07  
2-11 3 305 26,210 4.1 1086 3.1 816

**3rd Dam: Pine-Tree 2149Robst 4846-ET**  
VG-86 DOM  
2-04 3 365 32,000 4.8 1520 3.2 1036  
**4th Dam: Pine-Tree Zenith Sheen**  
VG-87 DOM  
1-11 3 305 24,500 3.9 959 3.0 740  
**5th Dam: Pine-Tree Martha Sheen-ET**  
VG-86 DOM  
1-11 3 365 31,210 4.2 1305 3.1 968  
**6th Dam: Pine-Tree Missy Martha-ET**  
VG-86 GMD DOM  
2-02 3 365 34,730 3.6 1266 3.1 1070  
**7th Dam: Wesswood-HC Rudy Missy-ET**  
EX-92-3E GMD DOM  
4-11 3 365 40,880 4.1 1665 3.4 1385  
*Global Cow of the Year 2014*  
**8th Dam: Wesswood Elton Mimi**  
EX-90 GMD DOM  
3-05 2 365 35,380 3.3 1160 3.0 1054  
**9th Dam: Wesswood Mandingo Ivy**  
VG-87  
6-05 2 365 36,330 3.6 1305 2.8 1018  
LIFE 1835 144,060 3.4 4933 2.9 4139  
**10th Dam: Wesswood Astro Matt Ester**  
VG-87 GMD DOM  
LIFE 1847 140,110 3.6 5029 3.0 4158  
**11th Dam: Wesswood Bell Claudette**  
VG-87 GMD DOM  
9-10 2 365 38,810 3.6 1383 2.9 1140  
LIFE 3634 280,980 3.6 9997 2.9 8092

# ILLINI *Golden Opportunity* SALE



**EDG KA Tango 57764-ET VG-85-2Y**  
Dam of Lot 24

**24**

## *BGP Flagship Tootsie-ET*

Bovine Genomic Partners  
Jason C. Lamoreaux  
11628 Old Belding Rd. NE  
Belding, MI 48809  
616-822-0101  
jlamauction@gmail.com

*Potential 12th Generation VG-EX!*

**Born: April 5, 2017**

**3143159836 99% RHA TR TL TD**

GTPI +2460  
PTA +1345M +72F +44P 75%R 4/2018  
PTA +627NMS +.08%F +.01%P  
PTA +3.7PL 2.87SCS +0.3DPR 4.4%DCE  
PTA +2.11T +2.06UDC +0.71FLC 75%R 4/2018

**S-S-I 1STCLASS FLAGSHIP-ET**  
**3127943686 99% RHA TR TP TC TY TV TL TD**

GTPI +2610  
PTA +707M +66F +39P 80%R 4/2018  
PTA +748NM +.14%F +.06%P  
PTA +6.7PL 2.64SCS +2.4DPR 4.9%DCE  
PTA +2.14T +2.27UDC +1.49FLC 80%R 4/2018

**ZAHBULLS ALTA1STCLASS-ET**  
**71441918 TR TP TC TY TV TL TD**

**S-S-I SUPRSIRE MIRI 8679-ET**  
**3011538078 TR TP TL TD**  
VG-89 DOM

**EDG KA TANGO 57764-ET**  
**3010356511 99% RHA TR TP TL TD**  
VG-85 +VGGV 2-06  
1-11 2 323 28,020 3.7 1030 3.2 888

**MR WELCOME HILL TANGO-ET**  
**70750485 TP TC TY TV TL TD**

**OCD MOGUL KIRSTIE ALLEY-ET**  
**3009533317**  
VG-86 +V++E DOM  
2-00 2 305 30,770 3.9 1206 3.3 1006  
3-07 3 260 29,690 3.4 1004 3.2 953

**3rd Dam: Vision-Gen SH Frd A12276-ET**  
EX-90 DOM  
2-01 3 365 28,700 3.7 1061 3.3 943  
**4th Dam: Applouis Jet Stream Alda-ET**  
VG-85 DOM  
5-05 2 30524,980 3.7 925 3.1 777  
**5th Dam: Morningview Otsd April-ET**  
VG-87 GMD DOM  
2-03 3 365 36,010 4.3 1560 3.4 1223  
**6th Dam: Morningview Gibbon Judy-ET**  
VG-85 GMD DOM  
2-04 2 305 25,010 3.9 964 3.0 752  
**7th Dam: Morningview Converse Judy**  
EX-93 GMD DOM  
4-05 2 365 38,100 4.1 1565 3.1 1197  
**8th Dam: Mornignview Aerostar Jix-ET**  
VG-87  
5-06 2 340 32,040 3.9 1249 3.2 1028  
LIFE 1400 110,030 3.7 4110 3.3 3670  
**9th Dam: Walnutt-Knoll Judy-ET**  
VG-87 GMD DOM  
4-08 2 357 37,210 4.0 1480 3.0 1116  
**10th Dam: Walnutt-Knoll Rorae Jenny**  
EX-91-2E GMD DOM  
7-04 2 365 29,830 4.1 1210 2.8 828  
LIFE 2581 156,590 4.0 6248 3.1 1598  
**11th Dam: Lynnberry Gem**  
VG-89  
6-02 2 365 27,770 4.1 1143



# ILLINI *Golden Opportunity* SALE



**K-Star Supersire Limelite VG-85**  
Maternal Sister to Dam of Lot 25

**25**

## *K-Star Detour Laddle*

Koester Dairy, Inc.  
Dan Koester  
1099 E Angle Rd.  
Dakota, IL 61018  
815-821-3789  
koesterdairy@gmail.com

**3146121831 100% RHA TR TP TC TL TD**  
GTPI +2461  
PTA +1261M +73F +46P 75%R 4/2018  
PTA +681NMS +.09%F +.03%P  
PTA +4.7PL 2.74SCS +0.1DPR 4.6%DCE  
PTA +1.27T +1.86UDC +0.61FLC 74%R 4/2018

**Born: September 15, 2017**

**RONELEE MIDNIGHT DETOUR-ET**  
**73143748 100% RHA TC TY TV TL TD**  
GTPI +2596  
PTA +1342M +73F +51P 80%R 4/2018  
PTA +795NM +.08%F +.04%P  
PTA +5.6PL 2.77SCS +1.0DPR 5.4%DCE  
PTA +1.61T +2.66UDC +0.62FLC 79%R 4/2018

**S-S-I EPIC MIDNIGHT-ET**  
**3009554689 TR TP TY TV TL TD**  
**RONELEE FEELING FANCY-ET**  
**142066386**  
EX-90

**K-STAR YODER LIMEAID-ET**  
**3131904890 100% RHA**  
GTPI +2477  
PTA +1051M +106F +49P 78%R 4/2018  
PTA +692NM +.24%F +.06%P  
PTA +2.6PL 2.99SCS -0.6DPR 5.1%DCE  
PTA +1.34T +1.23UDC +0.88FLC 78%R 4/2018  
1-11 3 125 11,499 4.8 550 3.3 385 inc.

**WOODCREST MOGUL YODER-ET**  
**72254526 TR TP TC TY TV TL TD**  
EX-90 GM  
**K-STAR FACEBOOK LIMERICK**  
**71528674**  
GP-83 VV+++ 3-09  
3-00 3 365 37,740 5.7 2143 3.6 1374  
*1st IL Fat*  
1-10 3 365 33,690 5.2 1750 3.4 1144

**3rd Dam: LaClar Junction Liberty**  
VG-86  
2-11 3 312 29,610 5.2 1534 3.3 979  
*National Elite Performer*  
**4th Dam: LaClar Billion Libilla**  
VG-85  
2-01 3 348 31,630 3.8 1206 3.2 1001

*Maternal Sister (pictured)*  
**K-Star Supersire Limelite VG-85**  
2-00 3 365 45,970 4.4 2039 3.3 1515  
*1st IL Fat & 1st IL Protein*  
*3 sons in AI*  
*Imax daughter over 2800GTPI*  
*10 daughters over 2700GTPI*

# ILLINI *Golden Opportunity* SALE



**Mil-R-Mor Gold Kara EX-93-3E**  
2nd Dam of Lot 26

# 26

## *Mil-R-Mor Robin Karlita-RC\*PO*

Mil-R-Mor  
Robert Miller  
765 E. Rock Grove Rd.  
Orangeville, IL 61060  
815-819-7282  
lorileeschultz@gmail.com

*Potential 9th Generation EX!*  
144359312 99% RHA RC PO

**Born: September 5, 2017**

**JA-BOB ROBIN-PP-RED-ET**  
72751311 99% RHA PP TL TD  
GTPI +1733  
PTA +341M -2F +3P 90%R 4/2018  
PTA +99NM -.05%F -.03%P  
PTA +2.0PL 2.71SCS -1.3DPR 6.4%DCE  
PTA +0.53T +0.87UDC +1.16FLC 79%R 4/2018

**MIL-R-MOR DAMION KARLA**  
141592228 100% RHA  
EX-91-2E EVEVE 6-01  
4-04 2 365 29,400 3.6 1073 2.9 856  
2-01 2 365 21,190 3.8 808 3.1 654  
3-04 2 285 15,380 3.8 591 3.1 475

**PINE-TREE RELIEF P-RC**  
69169920 PC TY TV TL TD

**GOLDEN-OAKS DURA RAE-P-RED**  
70560438 PO  
VG-88

**ERBACRES DAMION**  
130263722 TR TY TV TL TD  
EX-96  
**MIL-R-MOR GOLD KARA**  
139352131  
EX-93-3E EEEVEE 9-03  
7-04 2 365 35,890 3.8 1346 2.6 941  
8-06 2 365 32,200 3.8 1217 2.7 881  
5-10 2 365 31,000 3.3 1028 2.8 860  
4-06 2 365 30,200 3.6 1088 2.7 826  
3-02 2 365 25,530 3.4 871 2.9 732  
2-02 2 311 20,080 3.5 696 2.8 571  
LIFE 2302 181,760 3.6 6521 2.8 5027

**3rd Dam: Mil-R-Mor Kashmara**  
EX-90-3E  
2-11 2 365 27,850 4.4 1220 3.0  
**4th Dam: Pinehurst Kashmir**  
EX-91  
7-08 2 363 36,170 3.5 1282 3.0 1071  
LIFE 1814 119,750 3.7 4372 3.0 3562  
**5th Dam: Pinehurst Caress-ET**  
EX-93-4E GMD  
10-08 3 365 39,390 3.9 1542 2.7 1075  
LIFE 2906 240,080 3.8 9214 2.8 6840  
**6th Dam: Pinehurst Pleasure**  
EX-93-4E GMD  
8-09 3 365 35,770 3.6 1273 2.8 1011  
LIFE 2816 203,070 3.6 7210 3.0 4092  
**7th Dam: Pinehurst Precious**  
EX-95-4E GMD  
9-05 3 365 35,640 3.5 1257 2.9 1039  
LIFE 3666 266,416 3.4 9080 3.0 5001  
**8th Dam: Jan-Com Fond Matt Matilda**  
EX-97-4E GMD  
10-10 3 365 35,630 3.9 1391

# ILLINI *Golden Opportunity* SALE



**RuAnn Sanchez Ella-94960-ET EX-93**  
Dam of Lot 27

**27**

## *RuAnn Doorman Ella-74644-ET*

Stephen & Patrick Maddox  
7285 W. Davis Ave.  
Riverdale, CA 93656  
559-977-1889  
sdmaddox@yahoo.com

*Potential 8th Generation VG-EX!*  
3142581866 99% RHA TR TP TC TL TD

Born: September 5, 2017

**VAL-BISSON DOORMAN-ET**  
CAN 107281711 99% RHA TV TL TY TD  
VG-87 GTPI +2275  
PTA -22M +38F +25P 99%R 4/2018  
PTA +362NM +.14%F +.10%P  
PTA +2.2PL 2.53SCS -1.4DPR 5.5%DCE  
PTA +3.61T +2.54UDC +2.31FLC 99%R 4/2018

**RUANN SANCHEZ ELLA-94960-ET**  
3006192986 100% RHA TR TL TD  
EX-93 EEEVE 5-05  
4-10 3 365 38,900 3.8 1467 3.1 1215  
3-04 3 365 35,610 3.7 1302 3.1 1097  
2-00 3 365 28,860 3.5 1021 3.0 867  
6-01 3 323 25,450 3.6 904 3.1 781  
LIFE 1486 133,050 3.6 4839 3.1 4095

**DE-SU 521 BOOKEM-ET**  
CAN 66636657 TR TV TL TY TD 99% RHA  
VG-88 GM  
**VAL-BISSON SHOTTLE IMELDA-ET**  
CAN 106173432  
EX-94

**GEN-MARK STMATIC SANCHEZ**  
134422312 TR TP TY TV TL TD  
EX-94  
**RUANN MORTY ELLA-53536-ET**  
62526538  
EX-91 EEVVE 3-11  
3-02 3 365 36,570 3.4 1228 2.8 1012  
2-01 3 353 34,270 3.7 1255 2.7 909

**3rd Dam: RuAnn Magnum Ella-80163**  
VG-88  
4-00 3 320 38,290 3.5 1335 3.1 1188  
LIFE 1717 165,150 3.5 5803 3.1 5115  
**4th Dam: RuAnn Mandingo Ellen 88758**  
VG-86 GMD DOM  
5-10 3 365 34,510 3.6 1244 3.0 1033  
LIFE 2722 228,150 3.5 7992 2.9 6716  
**5th Dam: Hanover-Hill-W Mars Miss Ellie**  
VG-86 DOM  
3-03 3 365 26,810 3.9 1043 3.1 842  
LIFE 2699 204,280 3.9 7880 3.2 5831  
**6th Dam: Sleepy-Hollow Miss Ella**  
EX-91-3E  
9-00 3 365 28,010 4.1 1154  
LIFE 3021 200,790 4.2 8351 3.0 1402  
**7th Dam: Sleepy-Hollow Astro Ella**  
EX-90  
5-03 2 318 26,700 3.5 931  
LIFE 1780 123,500 3.8 4678



# ILLINI *Golden Opportunity* SALE



**Cleland Defiant Kailene-Red**  
Same Family as Lot 28



**Cleland Advent Korie-Red-ET EX-94-3E**  
Same Family as Lot 28

# 28

## *Cleland Defiant Konstance-Red*

Jim & Vicky Cleland  
9745 E. County Road P  
Clinton, WI 53525  
608-676-4562  
jasoncleland20@hotmail.com

*Potential 9th Generation VG-EX!*  
**PENDING 100% RHA**

**Born: June 8, 2017**

**SCIENTIFIC B DEFIANT-ET-RC**  
**141123484 100% RHA TP TC TY TV TL TD**  
GTPI +1649  
PTA +511M -29F +5P 99%R 4/2018  
PTA -158NM -.17%F -.04%P  
PTA -1.0PL 3.14SCS -2.9DPR 5.9%DCE  
PTA +3.47T +2.46UDC +1.57FLC 98%R 4/2018

**REGANCREST S BRAXTON-ET**  
**61898423 TR TY TV TL TD**  
EX-95  
**SCIENTIFIC GOLD DIOR RAE-ET-RC**  
**138328405 CV**  
EX-92 DOM

**CLELAND ABSOLUTE KOLORA-RED**  
**142644610 100% RHA**  
VG-88 VEV+E 4-02  
2-04 2 305 15,980 3.5 555 2.9 465

**APPLES ABSOLUTE-RED-ET**  
**139358472 CV TC TY TL TD**  
EX-94  
**CLELAND ADVENT KORRIE-RED**  
**138759476**  
VG-87 EEV+V 5-10  
3-04 2 347 21,780 4.4 963 2.9 633  
2-03 2 335 19,200 4.1 785 2.9 563  
4-04 2 336 18,420 4.0 730 3.2 585

*Same family as:*

**Cleland Defiant Kailene-Red (pictured)**  
*Unanimous All-American & Jr. All-American  
R&W Fall Yearling 2017*

**Cleland Advent Korie-Red-ET EX-94-3E (pictured)**  
8-06 2 365 35,810 4.4 1591 3.3 1191  
Life: 1986 147,420 4.6 6786 3.4 5058  
*Nom. All-American R&W 125,000 Lb. Cow 2016  
Nom. All-American R&W Aged Cow 2015  
All-American & Jr. All-American R&W Aged Cow 2013*

**3rd Dam: Crull-CKC Marker Kobie-RC**  
VG-87  
4-09 2 305 26,230 3.2 843 2.9 748  
Life: 1814 110,820 3.5 3841 3.0 3283  
**4th Dam: Cleland Ray Kobra-Red-ET**  
VG-85  
3-10 3 365 31,910 3.5 1121 3.2 1010  
Life: 1457 117,330 3.8 4512 3.1 3631  
**5th Dam: Weeks SBBL Krista 6-ET-RC**  
VG-86  
6-03 2 305 26,400 3.4 899 2.8 734  
Life: 1535 105,490 3.7 3937 3.1 3305  
**6th Dam: An-Joy Krista**  
VG-87 EX-MS DOM  
**7th Dam: An-Joy Valiant Krissy**  
VG-85 DOM  
**8th Dam: An-Joy Gallant Kristine**  
VG-85

# ILLINI *Golden Opportunity* SALE



**Markwell Durham Dawn-ET EX-94-2E**  
Dam of Lots 29 & 30

**29**

Dylan Reed  
883 N. 375 St.  
Vandalia, IL 62471  
618-425-3796  
dreed.11@hotmail.com

## *Oakfield GldDrms Desire-ET*

*Potential 6th Generation EX!*  
3134444551 100% RHA

**Born: March 2, 2016**  
**Fresh: February 20, 2018**  
*Maternal Sister to Lot 30*

**30**

Jonathan Lamb  
6880 Albion Rd.  
Oakfield, NY 14125  
585-704-2501  
jllacc@rochester.rr.com

## *Oakfield Blake Dragon-ET*

*Potential 6th Generation EX!*  
3134444940 99% RHA

**Born: June 1, 2017**  
*Maternal Sister to Lot 29*

**SIRE OF LOT 29:**

**HEAVENLY GOLDEN DREAMS-ET**  
**GBR 642262 100% RHA TV TL**  
GTPI +1816  
PTA -1063M -2F -23P 99%R 4/2018  
PTA +26NM +.15%F +.04%P  
PTA +0.5PL 2.64SCS +0.3DPR 6.4%DCE  
PTA +2.31T +2.65UDC +1.34FLC 99%R 4/2018  
*Goldwyn x Durham*

**MARWELL DURHAM DAWN-ET**

**136093956 100% RHA TV**  
EX-94-2E EEEEE 7-01  
4-08 2 365 29,970 3.2 959 3.3 988  
6-07 2 305 23,370 3.3 775 3.4 801

**SIRE OF LOT 30:**

**WALNUTLAWN BLAKE-ET**  
**CAN 11775997 99% RHA**  
GTPI +1975  
PTA -78M +15F +7P 92%R 4/2018  
PTA +117NM +.07%F +.03%P  
PTA +1.0PL 2.71SCS -3.4DPR 7.6%DCE  
PTA +3.77T +2.74UDC +2.07FLC 89%R 4/2018  
*Doorman x Atwood*

**REGANCREST ELTON DURHAM-ET**

**2250783 TR CV TL**  
EX-90 GM  
**MARWELL LUKE RAPTURE-ET**  
**15607283**  
EX-92-4E EEEEE GMD DOM 12-11  
5-06 2 365 39,400 4.2 1649 3.1 1230  
2-02 2 365 30,340 3.5 1047 3.2 970  
LIFE 1859 137,840 3.9 5347 3.4 4703

**3rd Dam: Markwell Bstar E Raven-ET**

EX-95-3E GMD DOM  
4-09 2 365 36,610 4.3 1580 3.2 1185  
LIFE 2387 160,020 4.1 6623 3.4 5458

**4th Dam: Markwell Mark Elite**

EX-92-4E GMD DOM  
7-00 2 365 36,230 3.9 1426 3.0 1096  
LIFE 3736 211,430 3.8 8108 3.4 7131

**5th Dam: Rockalli Mars Emily**

EX-94-4E GMD DOM  
3-10 2 365 28,270 3.7 1050 3.3 934  
LIFE 3113 182,970 3.8 7016 3.3 5983



# ILLINI *Golden Opportunity* SALE



**Ziems-LKH Damion Muddy-ET EX-92-2E EX-MS**  
Dam of Lot 31

**Ziems-LKH Outside Mis Mud-ET EX-94-3E EX-MS**  
2nd Dam of Lot 31

# 31

## *Avalanche Heifer Calf*

**Maternal Sisters to Lot 31**

**Reginald Monet EX-91**

*3rd Jr. 2-Year-Old Midwest Spring Nat'l 2013*

*2nd Jr. 2-Year-Old Wisconsin District 6 Show 2013*

**Muddy Diamondback**

*6th Spring Yearling Midwest Spring Nat'l 2017*

**Brady Muddy**

*2nd Winter Yearling Wisconsin District 6 Show 2017*

*6th Winter Yearling Wisconsin Championship Show 2017*

**Potential 8th Generation VG-EX!**

**Born: March 2018**

**PENDING 99% RHA**

Tim & Leah Ziembra  
1397 Hillside Rd.  
Cambridge, WI 53523  
315-730-3312  
tziembra@hotmail.com

**DYMENTHOLM MR APPLES AVALANCHE-RC**  
**CAN 11957107 99% RHA CV TY TL TD**  
GTPI +2149  
PTA +60M +22F +12P 80%R 4/2018  
PTA +204NM +.07%F +.04%P  
PTA +0.8PL 2.83SCS -0.7DPR 5.8%DCE  
PTA +3.73T +2.92UDC +2.54FLC 78%R 4/2018

**DE-SU BKM MCCUTCHEN 1174-ET**  
**69990138 TR TP TC TY TV TL TD**  
EX-93 GM  
**KHW REGMENT APPLE C-RED-ETN**  
**70244494**  
VG-89

**ZIEMS-LKH DAMION MUDDY-ET**  
**63837070 100% RHA TL TD**  
EX-92-2E EEEVE 8-10  
6-01 2 365 31,580 3.7 1180 2.8 887  
4-04 2 365 31,030 4.0 1251 2.8 858  
8-06 2 365 29,140 4.1 1207 2.8 810  
LIFE 132,340 3.9 5219 2.9 3837  
*2nd Aged Cow Wisconsin District 6 Show 2016*

**ERBACRES DAMION**  
**130263722**  
EX-96  
**ZIEMS-LKH OUTSIDE MS MUD-ET**  
**133621585**  
EX-94-3E EEEEE 10-01  
9-08 2 363 32,670 4.9 1600 3.2 1039  
2-02 3 365 28,880 4.8 1393 3.2 923  
6-00 2 365 25,870 4.1 1069 3.3 857  
7-03 2 365 22,540 4.5 1010 3.3 740  
3-08 3 313 20,950 4.7 980 3.5 730  
LIFE 136,100 4.6 6317 3.3 4478

**3rd Dam: East-Cupcake Muddy Water**  
EX-95-3E  
8-04 3 365 35,060 4.8 1698 3.0 1064  
LIFE 144,890 4.7 6856 3.2 4588  
**4th Dam: East-Cupcake Mississippi Mud**  
VG-85  
3-05 2 278 18,260 4.3 785 3.2 580  
**5th Dam: East-Cupcake Mississippi Slim**  
VG-86  
4-04 2 294 21,080 3.9 816 3.5 743  
**6th Dam: Frogmore Citamatt Maysie**  
EX-90  
7-04 2 305 28,480 3.6 1022 3.2 904  
LIFE 108,970 3.4 3754 3.2 3434  
**7th Dam: Provin-Mtn Rosafe May Royal**  
VG-85  
11-01 2 305 19,340 3.2 620 3.5 668  
LIFE 103,100 3.5 3611 3.5 668



# ILLINI *Golden Opportunity* SALE



**Goldie Sanchez Chardonay-ET EX-94-2E**  
Dam of Lot 32

**32**

## *Navs D Grigio-ET*

Janssen Cattle Co.  
Nate Janssen  
1936 Chippewa Dr.  
Wheaton, IL 60189  
847-224-7859  
natejanssen@yahoo.com

*Potential 8th Generation VG-EX!*  
71455255 99% RHA TR TL TD

**Born: March 23, 2017**

**VAL-BISSON DOORMAN-ET**  
CAN 107281711 99% RHA TV TL TY TD  
VG-87 GTPI +2275  
PTA -22M +38F +25P 99%R 4/2018  
PTA +362NM +.14%F +.10%P  
PTA +2.2PL 2.53SCS -1.4DPR 5.5%DCE  
PTA +3.61T +2.54UDC +2.31FLC 99%R 4/2018

**DE-SU 521 BOOKEM-ET**  
CAN 66636657 TR TV TL TY TD 99% RHA  
VG-88 GM  
**VAL-BISSON SHOTTLE IMELDA-ET**  
CAN 106173432  
EX-94

**GOLDIE SANCHEZ CHARDONAY-ET**  
140567322 100% RHA  
EX-94-2E EEEEE 6-00  
3-02 2 365 32,130 3.9 1243 3.3 1072  
4-11 2 365 22,490 4.0 893 3.6 808  
2-03 2 310 20,440 3.8 778 3.2 647  
*3rd Jr: 2-Yr-Old Eastern Fall Nat'l 2012*  
*3 EX and 12 VG Daughters*

**GEN-MARK STMATIC SANCHEZ**  
134422312 TR TP TY TV TL TD  
EX-94  
**R-Z BAXTER CARMEL-ET**  
139057296  
VG-89 DOM  
2-04 2 365 40,291 4.6 1858 3.6 1442

**3rd Dam: Ralma Goldwyn Carmel-ET**  
EX-92-2E GMD DOM  
5-02 3 305 41,400 4.3 1778 3.3 1366  
**4th Dam: Ralma Christmas Cookie-ET**  
VG-89 DOM  
2-06 2 365 28,710 4.5 1297 3.4 967  
**5th Dam: Ralma Christmas Fudge-ET**  
VG-88 GMD DOM  
2-03 2 365 31,810 4.1 1292 3.2 1027  
**6th Dam: Ralma Juror Faith**  
EX-91 GMD DOM  
4-02 2 365 47,860 4.5 2165 3.1 1497  
LIFE 1352 133,520 4.5 5986 3.3 4358  
**7th Dam: Ralma Leadman Fashion**  
VG-89  
4-10 2 365 40,710 3.7 1494 3.0 1232  
LIFE 1243 117,710 3.6 4295 3.2 3743

# ILLINI *Golden Opportunity* SALE



**Regancrest Encore Dalhia-ET VG-89**  
3rd Dam of Lot 33



**Snow-N Denises Dellia EX-95 GMD DOM**  
4th Dam of Lot 33

# 33

## *Erbacres Latrisha-ET*

Connor, Nevin & Delana Erbsen  
10974 Benson Rd.  
Lanark, IL 61046  
815-493-6445  
johnerbsen@aeroinc.net

3132921287 99% RHA

Born: March 3, 2017

**MR ALL ABOUT IT-ET-RC**  
72227624 99% RHA CD TY TV TL TD  
GTPI +2160  
PTA +284M +38F +19P 95%R 4/2018  
PTA +323NM +.10%F +.04%P  
PTA +0.8PL 2.90SCS -0.8DPR 4.8%DCE  
PTA +2.32T +2.62UDC +1.61FLC 93%R 4/2018

**DE-SU BKM MCCUTCHEN 1174-ET**  
69990138 TR TP TC TY TV TL TD  
EX-93 GM  
**MS CARMEL APPLE-RED-ET**  
69561887 CV

**ERBACRES LOVE OF PEACE-ETN**  
70244491 100% RHA  
EX-90 EEE+E 5-00  
4-06 2 365 22,020 4.2 926 3.7 811  
3-04 2 365 20,660 4.3 880 3.7 758  
2-04 2 344 18,120 4.2 770 3.7 673

**BRAEDALE GOLDWYN**  
CAN 10705608 CD TY TV TL  
GP-84 GM  
**ERBACRES DURHAM PEPSI-ET**  
135110841  
GP-83 +V+GV 2-08  
2-05 2 105 5,710 2.7 157 3.0 169

**3rd Dam: Regancrest Encore Dalhia-ET**  
VG-89  
2-01 2 365 29,250 3.3 971 3.3 968  
**4th Dam: Snow-N Denises Dellia**  
EX-95-2E GMD DOM  
7-06 2 365 35,610 4.0 1431 3.1 1103  
LIFE 113,640 4.0 4555 3.4 3822  
**5th Dam: Snow-N Dorys Denise**  
EX-90-2E GMD DOM  
5-09 2 365 33,350 3.8 1256 3.1 1038  
LIFE 114,010 3.6 4153 3.2 3649

# ILLINI *Golden Opportunity* SALE



**Astrahoe Roberta Sabrina-ET EX-91**  
Dam of Lot 34



**Astrahoe Storm R Roberta EX-93-2E**  
2nd Dam of Lot 34

# 34

## Hot-Shot GC Shannon-ET

Justin M. Irwin  
10946 Grange Hall Rd.  
Belvidere, IL 61008  
815-701-8090  
mmirwins@yahoo.com

**Born: June 2, 2017**  
**Potential 16th Generation EX!**  
**3140458878 100% RHA**

**MR CHASSITY GOLD CHIP-ET**  
**140145553 100% RHA TR TP TY TV TL TD**  
EX-94 GTPI +1805  
PTA -233M +0F -22P 99%R 4/2018  
PTA +81NM +.03%F -.06%P  
PTA +1.5PL 2.67SCS -1.4DPR 3.5%DCE  
PTA +2.33T +2.21UDC +1.87FLC 99%R 4/2018

**BRAEDALE GOLDWYN**  
**CAN 10705608 CD TY TV TL**  
GP-84 GM  
**REGANCREST S CHASSITY-ET**  
**62496899 TY TL**  
EX-92 GMD DOM

**ASTRAHOE ROBERTA SABRINA-ET**  
**138021102 100% RHA TL TD**  
EX-91 EEEEE 7-00  
6-10 3 365 34,190 4.1 1388 3.0 1025  
5-05 3 365 31,660 3.4 1084 3.0 937  
4-04 2 305 21,470 3.8 812 3.0 654  
3-05 2 286 19,570 3.9 765 3.3 641  
2-04 2 305 16,680 3.8 631 3.0 497  
LIFE 1777 131,420 3.8 5015 3.1 4033

**DONNANDALE SKYCHIEF-ET**  
**CAN 391661 TL**  
EX GM  
**ASTRAHOE STORM R ROBERTA**  
**133749586**  
EX-93-2E EEEVE 6-04  
6-02 3 365 41,400 3.1 1296 2.8 1178  
4-01 3 365 38,310 3.8 1442 3.1 1180  
2-07 2 305 20,750 3.3 676 3.0 630  
LIFE 1120 106,720 3.4 3623 3.0 3222

**3rd Dam: Astrahoe P Rosa Riatta-ET EX-91**  
3-08 3 365 34,190 3.7 1270 3.0 1017  
**4th Dam: Pinehurst Royal Rosa-ET EX-91-2E**  
3-10 3 365 41,400 3.3 1358 2.8 1145  
LIFE 1212 115,400 3.5 4073 2.9 3375  
**5th Dam: Pinehurst Roulade EX-92-2E**  
5-00 3 365 35,130 3.6 1271 3.0 1048  
LIFE 1761 142,070 3.8 5395 3.1 4436  
**6th Dam: Pinehurst Sweet Cleo EX-90**  
6-00 3 365 40,380 4.4 1776 3.0 1228  
LIFE 2173 191,570 3.9 7392 3.1 5875  
**7th Dam: Pinehurst Sweet Freedom EX-90**  
5-07 3 330 34,520 4.3 1500 3.1 1084  
**8th Dam: Pinehurst Sweet Delight**  
EX-91-3E GMD  
8-10 3 365 28,460 4.2 1194 3.2 917  
LIFE 2228 151,600 4.0 6116 3.2 4907  
**9th Dam: Pinehurst Rapture EX-96-4E GMD**  
5-04 3 365 31,460 3.8 1190  
LIFE 2297 160,790 3.9 6337 3.0 2469  
**10th Dam: Pinehurst Fragrance EX-90-2E**  
4-08 3 365 34,490 3.6 1234  
LIFE 2004 131,700 3.5 4659 3.1 612  
**11th Dam: Hayssen Fond Ariel EX-90**  
8-06 2 328 23,330 3.2 753  
LIFE 1936 105,270 3.4 3559  
**12th Dam: Hayssen D V Audrey EX-90-2E**  
9-03 2 365 23,670 4.4 1035  
LIFE 2413 126,251 4.4 5547  
**13th Dam: Whirlhill Q Rag Apple Ariel EX-92**  
6-02 2 365 26,755 4.2 1134  
LIFE 3861 228,465 4.5 9595  
**14th Dam: Arlite Posch EX-92 GMD**  
5-05 3 365 21,193 3.7 779  
LIFE 3586 144,739 4.7 5176  
**15th Dam: Audrey Posch EX-93-2E GMD**  
9-01 3 365 27,012 3.8 1016  
LIFE 3526 180,339 5.0 6775



# ILLINI *Golden Opportunity* SALE



**Astrahoe Stormatic Radiant EX-90 GMD**  
3rd Dam of Lot 35



**Astrahoe LJ Rosa Rebel-ET EX-92**  
4th Dam of Lot 35

**35**

## *Hightide Beemer Rockstar*

Scott Courtney  
2564 Pole Line Rd.  
Ridgeway, IA 52165  
563-380-1318  
courtneysalesllc@gmail.com

**Born: April 22, 2016**  
**Due: May 29, 2018 to 7HO12773**  
**Larcrest Kenosha-ET**  
**ultrasounded heifer**  
**Potential 17th Generation EX!**  
**143798536 99% RHA**

**POL BUTTE MC BEEMER-ET**  
**CAN 7525863 99% RHA TP TC TY TV TL TD**  
EX-92 GTP1 +1940  
PTA +399M +27F +12P 98%R 4/2018  
PTA +143NM +.04%F +.00%P  
PTA -0.1PL 2.93SCS -3.6DPR 5.2%DCE  
PTA +3.36T +2.40UDC +1.89FLC 96%R 4/2018

**HIGHTIDE GOLDWYN ROCKETT-ET**  
**142406429 100% RHA**  
EX-90 VEVVE 3-04  
3-01 2 365 28,700 3.9 1117 3.1 886  
2-01 2 323 23,800 4.1 974 3.1 734

**DE-SU BKM MCCUTCHEN 1174-ET**  
**69990138 TR TP TC TY TV TL TD**  
EX-93 GM  
**BUTZ-BUTLER GOLD BANNER-ET**  
**140145517**

**BRAEDALE GOLDWYN**  
**CAN 10705608 CD TY TV TL**  
GP-84 GM  
**CASTLEHOLM DUNDEE RIBBON-ET**  
**65597071**  
EX-92-3E EEEEE 9-02  
2-02 3 365 33,040 3.5 1153 2.8 937  
5-06 2 292 25,770 3.4 880 3.0 770  
3-07 2 365 25,060 3.4 841 3.0 753  
LIFE 1653 126,940 3.6 4512 3.1 3946

**3rd Dam: Astrahoe Stormatic Radiant**  
EX-91-2E GMD  
5-02 3 365 49,840 4.2 2087 2.7 1343  
LIFE 1163 130,530 4.0 5182 3.0 3914  
**4th Dam: Astrahoe LJ Rosa Rebel-ET**  
EX-92-2E  
7-05 2 365 48,580 4.2 2021 2.8 1376  
LIFE 1186 110,960 3.9 4326 3.0 3319  
**5th Dam: Pinhurst Royal Rosa-ET EX-91-2E**  
3-10 3 365 41,400 3.3 1358 2.8 1145  
LIFE 1212 115,400 3.5 4073 2.9 3375  
**6th Dam: Pinhurst Roulade EX-92-2E**  
5-00 3 365 35,130 3.6 1271 3.0 1048  
LIFE 1761 142,070 3.8 5395 3.1 4436  
**7th Dam: Pinhurst Sweet Cleo EX-90**  
6-00 3 365 40,380 4.4 1776 3.0 1228  
LIFE 2173 191,570 3.9 7392 3.1 5875  
**8th Dam: Pinhurst Sweet Freedom EX-90**  
5-07 3 330 34,520 4.3 1500 3.1 1084  
**9th Dam: Pinhurst Sweet Delight**  
EX-91-3E GMD  
8-10 3 365 28,460 4.2 1194 3.2 917  
LIFE 2228 151,600 4.0 6116 3.2 4907  
**10th Dam: Pinhurst Rapture EX-96-4E GMD**  
5-04 3 365 31,460 3.8 1190  
LIFE 2297 160,790 3.9 6337 3.0 2469  
**11th Dam: Pinhurst Fragrance EX-90-2E**  
4-08 3 365 34,490 3.6 1234  
LIFE 2004 131,700 3.5 4659 3.1 612  
**12th Dam: Hayssen Fond Ariel EX-90**  
8-06 2 328 23,330 3.2 753  
LIFE 1936 105,270 3.4 3559  
**13th Dam: Hayssen D V Audrey EX-90-2E**  
9-03 2 365 23,670 4.4 1035  
LIFE 2413 126,251 4.4 5547  
**14th Dam: Whirlhill Q Rag Apple Ariel EX-92**  
6-02 2 365 26,755 4.2 1134  
LIFE 3861 228,465 4.5 9595  
**15th Dam: Arlite Posch EX-92 GMD**  
5-05 3 365 21,193 3.7 779  
LIFE 3586 144,739 4.7 5176  
**16th Dam: Audrey Posch EX-93-2E GMD**  
9-01 3 365 27,012 3.8 1016  
LIFE 3526 180,339 5.0 6775

# ILLINI *Golden Opportunity* SALE



**Irwindale Spirte Brandi VG-88**  
2nd Dam of Lot 36

**36**

Dawn Irwin  
9400 Meridian Rd.  
Beason, IL 62512  
217-447-3220  
samirwin@itsintheair.net

*Irwindale Gold Chip Belle*

3130809215 100% RHA

Born: March 30, 2016

Fresh: March 12, 2018

**36½**

*Ammo Heifer Calf*

3143768598 99% RHA

Born: March 12, 2018

**MR CHASSITY GOLD CHIP-ET**  
140145553 100% RHA TR TP TY TV TL TD  
EX-94 GTPI +1805  
PTA -233M +0F -22P 99%R 4/2018  
PTA +81NM +.03%F -.06%P  
PTA +1.5PL 2.67SCS -1.4DPR 3.5%DCE  
PTA +2.33T +2.21UDC +1.87FLC 99%R 4/2018

**BRAEDALE GOLDWYN**  
CAN 10705608 CD TY TV TL  
GP-84 GM  
**REGANCREST S CHASSITY-ET**  
62496899 TY TL  
EX-92 GMD DOM

**IRWINDALE WINDBROOK BRENNIA**  
142887299 100% RHA  
2-00 2 365 30,250 3.6 1074 3.1 928

**GILLETTE WINDBROOK-ETS**  
CAN 7816429 CD TY TV TL TD  
EX-97  
**IRWINDALE SPIRTE BRANDI**  
141203050  
VG-88 EEEVV 4-11  
3-00 2 364 29,770 3.5 1049 3.1 920  
4-02 2 337 28,840 3.6 1043 3.0 863  
1-11 2 321 22,030 3.9 854 3.0 659

<p><b>3rd Dam: Irwindale Lou Bambi</b> VG-85 2-11 2 365 28,740 3.7 1072 3.2 916</p>
---

# ILLINI *Golden Opportunity* SALE



**Sugar-C Uno Essay-ET EX-91**  
Dam of Lot 37



**Ms Sugar-C Alexndr Queen-ET EX-92-2E**  
2nd Dam of Lot 37

# 37

## *Sugar-C D Back Nevada-ET-RC*

Sugar Creek Dairy  
Richard Adams  
N5624 County Road O  
Elkhorn, WI 53121  
262-728-9671  
marleenkadams@gmail.com

**Born: March 25, 2016**  
**Fresh: February 7, 2018**  
*Potential 14th Generation VG-EX!*  
**3132808092 99% RHA RC TP TL TD**  
*First test 82 lbs. 4.8F 3.3P*

**MR D APPLE DIAMONDBACK-RC**  
**3013721049 99% RHA TP TY TV TL TD**  
EX-93 GTP1 +1961  
PTA -355M +10F +10P 82%R 4/2018  
PTA +89NM +.09%F +.08%P  
PTA -0.2PL 2.98SCS -1.7DPR 6.8%DCE  
PTA +3.29T +2.48UDC +2.17FLC 79%R 4/2018

**VAL-BISSON DOORMAN-ET**  
**CAN 107281711 TR TP TY TV TL TD**  
VG-87  
**MS DELICIOUS APPLE-RED-ET**  
**139236776 TV TD**  
EX-94

**SUGAR-C UNO ESSAY-ET**  
**72065540 100% RHA TL TD**  
EX-91 EEEEE 4-10  
2-03 3 365 36,570 4.1 1505 3.1 1138  
3-08 3 309 30,560 4.2 1297 3.3 1004

**AMIGHETTI NUMERO UNO-ET**  
**ITA 17990915143 TR TP TY TV TL TD**  
GM  
**MS SUGAR-C ALEXNDR QUEEN-ET**  
**70159902**  
EX-92-2E EEEEE 6-03  
4-05 3 365 38,950 3.8 1475 2.9 1123  
2-00 3 365 37,940 3.7 1413 3.0 1140  
3-02 3 365 28,820 4.1 1168 3.2 923  
5-08 3 241 17,730 3.7 657 3.1 542  
LIFE 1412 128,770 3.8 4956 3.0 3909

**3rd Dam: Crescentmead PS Empress-ET**  
VG-86 GMD  
2-02 2 365 37,090 3.5 1316 2.7 1006  
**4th Dam: Crescentmead Morty Ebony-ET**  
VG-88 GMD  
2-03 2 365 33,900 3.9 1315 3.0 1009  
**5th Dam: Crescentmead Manfred Essay**  
EX-91 GMD DOM  
5-06 2 365 38,530 3.7 1409 3.0 1148  
LIFE 1409 101,220 3.8 3812 3.2 3241  
**6th Dam: Crescentmead Rudolph Easy**  
EX-90 DOM  
4-06 2 365 31,830 4.2 1324 3.0 966  
**7th Dam: Pintail-Point Essence-ET**  
EX-92-3E GMD DOM  
5-09 2 365 33,380 4.0 1319 3.1 1036  
LIFE 2593 184,240 4.1 7557 3.2 5942  
**8th Dam: Woodbine-K Rotate Estella-ET**  
EX-90-2E GMD DOM  
4-03 2 365 36,340 3.7 1356 3.0 1090  
LIFE 1487 118,940 3.8 4551 3.1 3685  
**9th Dam: Northcroft Ella Elevation**  
EX-97-4E GMD DOM  
7-07 2 365 48,731 4.2 2028  
LIFE 1892 205,347 3.9 8100 3.0 1227  
*4x All-American*  
**10th Dam: Northcroft Ella Arlinda**  
EX-91-2E GMD DOM  
7-03 2 365 25,600 3.4 863  
LIFE 2281 142,240 3.5 5001  
**11th Dam: Northcroft Ella Skyliner**  
VG-85  
3-11 2 357 19,480 3.6 702  
**12th Dam: Northcroft Ella Sovereign**  
VG-89  
LIFE 2678 130,466 3.7 4722  
**13th Dam: Northcroft Conk Design**  
VG-85  
LIFE 3292 134,970 4.2 4892



# ILLINI *Golden Opportunity* SALE



**Luck-E SS Martini-ET-RC EX-90**  
2nd Dam of Lot 38



**Whittier-CF Atwood Love-ET EX-91**  
Dam of Lot 40

**38**

## *Luck-E Absolute Matinee-Red*

J.T. Dorn  
c/o Andy & Sarah Lenkaitis  
6N411 Corron Rd.  
Saint Charles, IL 60175  
630-200-8617  
lenkaitisholsteins@gmail.com

**73278276 100% RHA**  
GP-83 V+V++ 2-06  
1-11 2 347 16,520 4.4 727 3.3 541

**Born: September 5, 2014**

**Bred: March 10, 2018 to 224HO4821  
Riverdown Unstoppable-Red**

**APPLES ABSOLUTE-RED-ET**  
**139358472 100% RHA CV TC TY TL TD**  
EX-94 GTPI +1487  
PTA -1550M +4F -12P 99%R 4/2018  
PTA -295NM +.24%F +.14%P  
PTA -4.4PL 3.44SCS -4.6DPR 11.4%DCE  
PTA +2.83T +3.25UDC +2.10FLC 99%R 4/2018

**LADINO PARK TALENT-IMP-ET**  
**AUS 930377**  
EX-90  
**KHW REGIMENT APPLE-RED-ET**  
**135511521 CV TL TD**  
EX-96-4E DOM

**LUCK-E BRAXTON MARTINA-RC**  
**69873606 100% RHA**  
VG-86 EEV+V 4-00  
3-02 3 293 30,150 3.3 990 2.7 829  
2-02 2 294 22,500 3.6 810 2.9 659  
4-01 3 155 16,190 4.5 729 2.8 449

**REGANCREST S BRAXTON-ET**  
**61898423 TR TY TV TL TD**  
EX-95  
**LUCK-E SS MARTINI-ET-RC**  
**62637069**  
EX-90 VEVVE 4-05  
4-01 2 365 39,260 3.5 1387 3.0 1170  
3-01 2 321 33,100 3.6 1177 3.0 995  
5-08 2 303 29,880 3.7 1113 3.2 943  
2-00 2 344 23,240 3.8 878 3.0 696  
6-07 2 147 17,550 3.2 561 2.9 501  
LIFE 1569 148,650 3.6 5365 3.0 4502

**3rd Dam: Logganlane Sky Matilda-ET**  
EX-92  
3-06 2 365 49,900 4.8 2383 3.0 1502  
*2nd IL Fat & 3rd IL Protein*  
LIFE 1678 180,570 4.3 7828 3.0 5498  
**4th Dam: Logganlane Pre Mary**  
EX 2\*  
9-01 2 365 26,482 3.3 871 3.0 797  
LIFE 1761 121,123 3.5 4194 3.0 3670

# ILLINI *Golden Opportunity* SALE

# 39

## *Misty-Manor Digger Sandra*

3130963034 100% RHA

Born: October 20, 2015

Megan L. Wiker  
1017 County Road J  
Mineral Point, WI 53565  
608-943-8757  
wiker@yousq.net

*Sister by Denali is VG as a 2-Yr-Old with record of*  
3-05 2 336 34,020 3.1 1043 3.2 1074

Fresh: March 17, 2018

**RONELEE GOLD DIGGER-ET**  
**3004373270 100% RHA TR CD TP TY TV TL TD**

EX-90 GTPI +2086  
PTA +231M -7F +11P 99%R 4/2018  
PTA +335NM -.06%F +.01%P  
PTA +3.6PL 2.65SCS +2.8DPR 4.3%DCE  
PTA +1.17T +1.80UDC +0.76FLC 99%R 4/2018

**MS MISTY-MANOR SUGAR**  
**62934274 100% RHA**

EX-90 EEEVE 6-00  
5-10 2 326 31,240 3.2 1001 2.8 869  
4-09 2 305 28,870 3.5 1008 3.0 876

**BRAEDALE GOLDWYN**  
**CAN 10705608 CD TY TV TL**  
GP-84 GM

**RONELEE OUTSIDE DABBLE-ET**  
**134644585 TY TV TL**  
EX-91-2E GMD DOM

**VELVET-VIEW-KJ SOCRATES-ET**  
**133126053 TR TV TL TD**

EX-94 GM  
**HUNSBERGER MANFRED SUGAR-ET**  
**128012972**  
EX-90 EEEVV GMD DOM 6-10  
3-11 2 289 30,150 3.6 1096 3.0 901  
6-04 2 301 27,640 3.7 1024 3.2 879  
7-04 2 305 27,070 3.6 962 3.2 868  
2-02 2 305 24,860 3.8 956 3.1 772  
LIFE 1614 134,200 3.7 5001 3.2 4251

**3rd Dam: Hunsberger Elton Tracy-ET**  
EX-91 GMD DOM  
5-01 2 365 44,270 3.9 1736 3.3 1461  
**4th Dam: Holmes-View Mark Tara**  
EX-91 GMD DOM  
3-09 2 305 36,540 3.7 1363 3.0 1091

# 40

## *Golden-Oaks Love Shack-ET*

3132672504 99% RHA

Born: May 3, 2016

Golden Oaks Farm  
PO Box 37  
Wauconda, IL 60084-0037  
847-224-7861  
eheinzmänn@crowm-chicago.com

**Due: May 24, 2018 to 224HO4506**  
**Blondin Zimmer Capture**  
**ultrasounded heifer**

**WALNUTLAWN SOLOMON-ET**  
**CAN 11775998 TR TP TY TV TL TD**  
GTPI +2047

PTA +101M +21F +12P 91%R 4/2018  
PTA +138NM +.06%F +.03%P  
PTA -0.6PL 2.88SCS -0.5DPR 6.5%DCE  
PTA +3.70T +2.48UDC +1.75FLC 86%R 4/2018

**WHITTIER-CF ATWOOD LOVE-ET**  
**140908952 100% RHA**

EX-91 EEEEE 3-07  
3-04 3 342 31,430 3.1 988 3.2 1006  
1-11 3 365 30,930 3.2 995 3.1 958

**VAL-BISSON DOORMAN-ET**  
**CAN 107281711 TR TP TY TV TL TD**  
EX-90

**MISTY SPRINGS LAVANGUARD SUE**  
**CAN 9979603**  
VG-89

**MAPLE-DOWNS-I G W ATWOOD-ET**  
**CAN 8956379 TR TP TY TV TL TD**

EX-90  
**CALBRETT SHOTTLE LUCY-ET**  
**CAN 7978111**  
EX-94-3E  
7-07 2 365 41,150 3.8 1570 3.1 1260  
5-05 2 365 32,680 3.6 1177 3.0 996  
4-04 2 351 32,450 4.1 1320 3.1 1005  
2-05 2 365 30,590 4.1 1242 3.4 1025  
6-06 2 341 29,710 3.6 1057 3.1 908  
LIFE 1958 177,700 3.9 6871 3.1 5575

**3rd Dam: Petinesca-I Durham Ladina**  
VG-89 6\*  
3-02 2 365 33,497 4.1 1367 3.1 1038  
**4th Dam: Savage-Leigh Belwood Linda**  
EX-92-2E GMD DOM  
2-10 2 365 40,240 5.8 2349 3.4 1358  
*1st National Fat & 1st Maryland Fat*  
Life: 126,760 5.2 6576 3.2 4076  
**5th Dam: Savage-Leigh Star Linda-ET**  
VG-87 GMD  
2-02 2 365 30,890 4.0 1236 3.1 952  
**6th Dam: Savage-Leigh Glenview Linda**  
EX-90 GMD DOM  
6-08 2 365 41,820 4.6 1936 2.8 1168  
Life: 150,300 4.4 6636 3.0 4528

# ILLINI *Golden Opportunity* SALE



**Carters-Corner Fever Pen-ET EX-92**  
Maternal Sister to Lot 41



**Carters-Corner Atwood Priss EX-92**  
Maternal Sister to Lot 41

**41**

## *Carters-Corner R Porsche-ET*

Tyler H. Carter  
211 IL Route 127  
Greenville, IL 62246  
618-664-1825  
tcarter908@yahoo.com

3130807001 100% RHA

Born: March 1, 2016

Sells Fresh

**REGANCREST REGINALD-ET**  
**62496439 100% RHA TY TD**  
GTPI+1889  
PTA +126M +26F +14P 99%R 4/2018  
PTA +82NM +.08%F +.04%P  
PTA -2.7PL 3.06SCS -1.4DPR 6.5%DCE  
PTA +2.45T +1.83UDC +0.53FLC 98%R 4/2018

**BRAEDALE GOLDWYN**  
**10705608 CD TY TV TL**  
GP-84 GM  
**REGAN-JOY DURHAM REGENIA-ET**  
**207184723 TV**  
EX-92 GMD DOM

*Maternal Sisters to Lot 35 (pictured)*

**Carters-Corner Atwood Priss EX-92**  
*Grand Champion Southern Spring Nat'l 2016*

**Carters-Corner Fever Pen-ET EX-92**  
*Grand Champion IL Championship 2017*

**MOHRFIELD SUPRA PRECIOUS**  
**137663859 100% RHA**  
EX-94-3E EEEEE 10-00  
5-00 2 305 25,720 4.5 1156 3.1 787  
2-03 2 365 21,070 4.7 982 3.4 720  
3-06 2 299 19,170 4.3 829 3.2 620  
*Jr. All-Illinois 5-Yr-Old 2012*  
*Res. Sr. Champion IL Championship Show 2011*  
*1st 4-Yr-Old Mid-East Fall Nat'l 2011*  
*2nd Fall Calf Mid-East Summer Nat'l 2007*

**BLONDIN SUPRA-ETS**  
**CAN 102027066**  
**SPEEDSIDE JED PIA-ET**  
**CAN 6953474**  
EX-94-2E EEEEE 7-07  
2-00 2 340 19,170 3.9 747 3.0 584  
*1st Dry Aged Cow Mid-East Spring Nat'l 2006*  
*1st 5-Yr-Old Mid-East Spring Nat'l 2003*  
*Nom. All-American 4-Yr-Old 2002*  
*1st Dry 3&4-Yr-Old Mid-East Spring Nat'l 2002*  
*1st Jr. 2-Yr-Old & Res. Int. Mid-East Spring Nat'l 2000*

**3rd Dam: Newhome Jethro Pinata**  
EX-2E  
7-00 2 305 22,732 4.1 935 3.3 750  
LIFE 5 lact 102,847 4.2 4325 3.4 3496  
**4th Dam: Norhurst Chris Pinata**  
EX-3E 2\*  
9-03 2 365 23,435 3.6 847 3.3 773  
LIFE 14 lact 272,048 3.5 9654 2.6 7073



# ILLINI *Golden Opportunity* SALE



**Tri-Day Ashlyn-ET EX-96-2E GMD DOM**  
4th Dam of Lot 42

# 42

## *MC-Country Brad-N-Angelina*

Kaycia, Allyson & Luke Zimmerman  
1059 S. Hoisington Rd.  
Winnebago, IL 61088  
815-335-1184  
bzimmerman@foxvalley.net

**3133190138 100% RHA**

**Born: January 5, 2016**

**Due: April 24, 2018 to 7HO11703**  
**Mr Apples Armani-ET-RC**

**REGANCREST-GV S BRADNICK-ET**  
**66625940 100% RHA TR TP TY TV TL TD**  
EX-95 GTPI +1910  
PTA +854M -21F +14P 99%R 4/2018  
PTA +162NM -.19%F -.04%P  
PTA +3.4PL 3.10SCS -1.9DPR 4.4%DCE  
PTA +2.44T +2.64UDC +2.40FLC 99%R 4/2018

**GEN-MARK STMATIC SANCHEZ**  
**134422312 TR TP TY TV TL TD**  
EX-94  
**REGANCREST BREYA-ET**  
**62496852 TL**  
EX-90 GMD DOM

**NMS GUTHRIE ASHLEY**  
**70454558 100% RHA**

**FUSTEAD GOLDWYN GUTHRIE-ET**  
**137191143 TR TP TY TV TL TD**  
EX-94  
**NMS FREMONT ARETHA**  
**70454517**  
VG-87 VV+VV 4-00  
4-02 2 307 33,150 2.9 972 3.0 1001  
3-01 2 333 29,090 3.0 872 3.1 894  
2-00 2 359 26,160 3.2 840 2.9 769

**3rd Dam: Kingsmill Ashlyns Armada-ET**  
EX-90  
4-05 2 363 26,000 3.1 815 3.1 810  
LIFE 1623 108,360 3.5 3788 3.2 3421  
**4th Dam: Tri-Day Ashlyn-ET**  
EX-96-2E GMD DOM  
4-09 2 365 43,090 4.8 2079 3.3 1422  
LIFE 1374 144,770 4.6 6665 3.4 4861  
*All-American 4-Yr-Old 2001*  
*All-American Sr. 3-Yr-Old 2000*  
**5th Dam: Bendy-Brook Odyssey Favorite**  
EX-92-2E DOM  
6-01 2 337 22,670 3.4 770 2.9 663  
**6th Dam: Bendy-Brook Star Fonda**  
VG-86  
3-11 2 290 23,390 3.5 826 2.9 680  
LIFE 1677 108,500 3.4 3725 3.0 3224

# ILLINI *Golden Opportunity* SALE



**Holbric Genius Lola-ET EX-93**  
3rd Dam of Lot 43



**Wendy-Oaks Titanic Miami-ET VG-87**  
2nd Dam of Lot 44 & 3rd Dam of Lot 45

**43**

## *Holbric Lotus Lyric-Red*

Jill R. Hentrich  
1213 IL Route 23  
Harvard, IL 60033  
847-691-2349

3137154089 100% RHA

Born: March 2, 2016

Due: April 26, 2018 to 7HO12587  
Mr D Apple Diamondback-RC  
ultrasounded heifer

**BLONDIN LOTUS-ET-RC**  
CAN 107308984 100% RHA TC TY TV TL  
GTPI +1394  
PTA -671M -23F -6P 94%R 4/2018  
PTA -268NM +.01%F +.05%P  
PTA -3.3PL 3.07SCS -4.0DPR 9.1%DCE  
PTA +2.14T +1.08UDC +0.64FLC 91%R 4/2018

**HOLBRIC BOLTON LADY A-RC**  
71616795 100% THA  
VG-87 V++VE 4-00  
4-11 2 356 22,670 4.0 910 2.9 665  
2-03 2 365 20,320 4.4 888 3.5 717  
3-11 2 307 19,110 3.8 735 3.1 586

**BRAEDALE GOLDWYN**  
CAN 10705608 CD TY TV TL  
GP-84 GM  
**ROCKYMOUNTAIN TAL LICORICE-ET-RC**  
CAN 7990215  
EX-95

**GEN-I-BEQ BOLTON-ET**  
CAN 101627672 TV TL  
**HOLBRIC DURHAM LAP DANCE**  
69319223  
GP-84 V++V+ 2-05  
2-01 2 233 14,390 4.4 628 3.4 483

**3rd Dam: Holbric Genius Lola-ET**  
EX-93-2E  
4-01 2 362 32,110 4.7 1525 3.3 1068  
LIFE 2077 133,270 5.2 6959 3.6 4783  
**4th Dam: Miss Arsenio Louann-RC**  
EX-90-2E  
4-11 2 365 26,750 4.3 1142 3.0 808  
LIFE 1582 100,670 4.4 4391 3.1 3135  
**5th Dam: Aaron Lee Jubilee Leanne**  
EX-91  
4-03 2 365 31,670 4.7 1480 3.2 1020  
**6th Dam: Aaron Lee SB Leanne-ET**  
VG-86  
3-00 2 327 14,833 4.8 714 3.3 490  
**7th Dam: Ananlea Unique Leanne**  
EX 3\*  
10-10 2 365 23,636 4.0 939 3.2 756  
LIFE 9 lact 189,029 4.3 8086  
**8th Dam: Ananlea Reflection Ormsby Leona**  
VG-85 2\*  
11-07 2 365 20,146 4.5 899  
LIFE 10 lact 168,817 4.3 7344

# ILLINI *Golden Opportunity* SALE

# 44

## Wendy-Oaks Kingboy Madussa

**Born:** December 5, 2015

**Fresh:** December 3, 2017

**Bred:** February 16, 2018 to 7HO13730

**Our-Favorite Undenied-ET**

**3132782922 99% RHA**

*Milking 83 lbs. 20SCC*

Gage Wendling  
13500 N. 400th St.  
Altamont, IL 62411  
618-483-5532  
kjholsteins@altamont.net

# 45

## Golden Dreams Heifer Calf

**Born:** December 3, 2017

**3148333420 99% RHA**

*Golden Dreams x Kingboy Madussa - Lot 44*

### MORNINGVIEW MCC KINGBOY-ET

**72044077 99% RHA TR TP TC TY TV TL TD**

EX-92 GTPI +2453

PTA +1213M +47F +40P 99%R 4/2018

PTA +521NM +.01%F +.01%P

PTA +3.1PL 2.69SCS +1.0DPR 3.8%DCE

PTA +3.21T +2.63UDC +1.25FLC 99%R 4/2018

### DE-SU BKM MCCUTCHEN 1174-ET

**69990138 TR TP TC TY TV TL TD**

EX-93 GM

### MORNINGVIEW SUPER MEGAN-ET

**68654508 TY**

EX-91 DOM

### WENDY-OAKS BLACKJACK MANGO

**64951245 100% RHA**

EX-90 EE+VE 9-03

7-11 2 351 22,750 4.0 906 3.1 698

6-10 2 319 22,700 3.6 815 3.0 680

### REGANCREST MR BLACKJACK-ET

**62496657 TR TV TL TD**

EX-90

### WENDY-OAKS TITANIC MIAMI-ET

**62473698**

VG-87 VV+EV 5-00

4-07 2 365 24,550 4.1 1018 3.3 820

3-04 2 305 24,080 3.6 871 3.3 786

2-02 2 305 22,790 3.5 787 3.0 673

### SIRE OF LOT 45:

**HEAVENLY GOLDEN DREAMS-ET**

**GBR 642262 100% RHA TV TL**

GTPI +1816

PTA -1063M -2F -23P 99%R 4/2018

PTA +26NM +.15%F +.04%P

PTA +0.5PL 2.64SCS +0.3DPR 6.4%DCE

PTA +2.31T +2.65UDC +1.34FLC 99%R 4/2018

*Goldwyn x Durham*

# 46

## Wendy-Oaks Lothario Ariel

**3132782923 100% RHA**

*Milking 70 lbs. 23SCC*

**Born:** December 27, 2015

**Fresh:** January 8, 2018

Macy Wendling  
13500 N. 400th St.  
Altamont, IL 62411  
618-483-5532  
kjholsteins@altamont.net

### COMESTAR LOTHARIO-ET

**CAN 105331852 100% RHA TY TL**

GTPI +1616

PTA -215M -8F -3P 98%R 4/2018

PTA -132NM +.00%F +.01%P

PTA -2.3PL 2.96SCS -3.5DPR 7.4%DCE

PTA +2.60T +1.75UDC +1.84FLC 96%R 4/2018

### BRAEDALE GOLDWYN

**CAN 10705608 CD TY TV TL**

GP-84 GM

### COMESTAR LAUTAMIE TITANIC-ET

**CAN 101760630**

VG-89

### WENDY-OAKS BOLIVIA ANGEL

**70385284 100% RHA**

VG-85 VVF+V 4-11

4-09 2 305 20,410 5.0 1030 3.3 669

3-05 2 305 18,510 5.4 1001 3.5 641

2-00 2 295 13,760 5.0 684 3.4 467

### MAGOR BOLIVIA ALLEN-ET

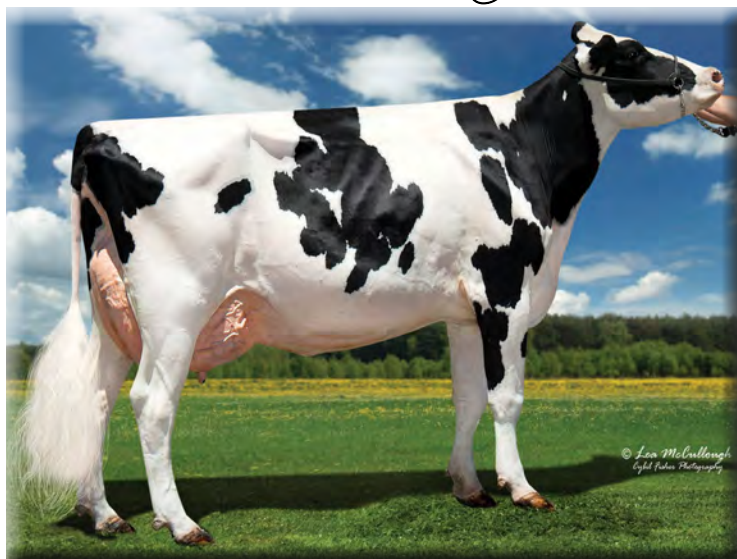
**HUN 3250511195 TY TV TL**

### WENDY-OAKS ADVENT ALICE-RC

**66693734**



# ILLINI *Golden Opportunity* SALE



**Team Dempsey Memory-ET VG-86-3Y**  
Dam of Lot 47



**Team Durham Morgan-ET EX-96-3E**  
2nd Dam of Lot 47

**47**

## *Lyonden Archrival Momento*

Dylan Reed  
883 N. 375 St.  
Vandalia, IL 62471  
618-425-3796  
dreed.11@hotmail.com

3134819845 100% RHA

Born: March 10, 2016

Bred: July 3, 2017 to 200HO10146  
Walnutlawn Solomon \*sexed\*  
Due: April 9, 2018  
\*Calf will also sell

**ECLIPSE ATWOODS ARCHRIVAL-ET**  
**AUS 1786521 100% RHA**  
GTPI+1844  
PTA -306M +12F -8P 92%R 4/2018  
PTA +50NM +.09%F +.00%P  
PTA +1.0PL 2.91SCS -2.5DPR 8.0%DCE  
PTA +3.35T +2.70UDC +2.15FLC 90%R 4/2018

**MAPLE-DOWNS-I G W ATWOOD-ET**  
**CAN 8956379 TR TP TV TL TY**  
EX-90  
**ANYA-ET**  
**DEU 1402793646**

**TEAM DEMPSEY MEMORY-ET**  
**70755887 100% RHA**  
VG-86 VVV+V 3-05  
2-06 2 365 25,960 3.6 922 3.1 804

**LIRR DREW DEMPSEY**  
**61083609**  
EX-93  
**TEAM DURHAM MORGAN-ET**  
**63391983**  
EX-96-3E EEEEE 10-05  
7-09 2 365 37,970 3.7 1387 2.7 1040  
4-10 2 365 36,980 2.9 1080 2.9 1083  
6-00 2 365 33,960 3.2 1101 2.9 988  
9-09 2 305 32,230 3.2 1042 2.8 905  
2-11 2 365 25,480 3.5 894 3.1 802  
2-00 2 296 19,590 3.5 686 3.1 599  
LIFE 231,200 3.3 7659 3.0 6892  
*HM All-American Production Cow 2015*  
*Supreme Champion Illinois State Fair 2015*  
*Grand Champion Mid-East Fall Nat'l 2012*

**3rd Dam: Irwindale Leduc Molly**  
EX-94-2E  
4-09 2 365 33,070 3.6 1206 3.3 1106  
LIFE 132,010 3.9 5138 3.4 4533  
*Illinois Cow of the Year 2008*  
**4th Dam: Irwindale Mark Macy**  
G-79  
2-04 2 311 15,600 3.8 588 3.3 507  
**5th Dam: Sun-Made C M Cottontail-ET**  
EX-90  
4-01 2 314 25,970 4.4 1150 3.2 838  
**6th Dam: Hill-Bluff AJ Merri-ET**  
EX-94-2E GMD  
7-07 2 365 40,280 3.8 1547 2.9 1176  
LIFE 173,647 3.8 6682 3.0 5150  
**7th Dam: Hill-Bluff Star Mollies Rorae**  
EX-91  
5-03 2 365 22,290 3.9 870 3.1 684  
**8th Dam: Hill-Bluff Star Molly**  
VG-87  
6-01 2 357 22,510 3.7 843 3.1 701  
**9th Dam: Bristol Skyway Molly**  
EX-92-4E  
**10th Dam: Man-O-War B F Baron Min**  
EX-91-3E  
**11th Dam: Man-O-War B F Crescent Minnie**  
VG-86  
**12th Dam: Spring Creek Pabst He Minnie**  
EX-90

# ILLINI *Golden Opportunity* SALE



**Ms Kingstead Cheif Adeen EX-94-2E DOM 7\***  
4th Dam of Lot 48

# 48

## *Silverview-Lane Door Audra*

Kyle Schneider  
1410 Richview Ln.  
Greenville, IL 62246

143727965 99% RHA

**Born: December 25, 2015**

**Due: May 2018 to 76HO369  
Butz-Butler Atwood Brady-ET**

**VAL-BISSON DOORMAN-ET**  
CAN 107281711 99% RHA TV TL TY TD  
VG-87 GTPI +2275  
PTA -22M +38F +25P 99%R 4/2018  
PTA +362NM +.14%F +.10%P  
PTA +2.2PL 2.53SCS -1.4DPR 5.5%DCE  
PTA +3.61T +2.54UDC +2.31FLC 99%R 4/2018

**DE-SU 521 BOOKEM-ET**  
CAN 66636657 TR TV TL TY TD 99% RHA  
VG-88 GM  
**VAL-BISSON SHOTTLE IMELDA-ET**  
CAN 106173432  
EX-94

**SILVERVIEW-LANE GW AUDRY-ET**  
142820610

**BRAEDALE GOLDWYN**  
CAN 10705608 CD TY TV TL  
GP-84 GM  
**SCH-SUNGLOW ALLISON-ET**  
141645207 TL TD  
EX-90 EEVVE 4-01  
4-00 2 305 22,850 3.7 838 2.9 663

**3rd Dam: BVK Durham Dixie-ET**  
EX-90  
2-06 2 365 32,410 3.2 1047 3.2 1051  
**4th Dam: Ms Kingstead Chief Adeen-ET**  
EX-94-2E DOM 7\*  
3-05 2 310 30,180 4.0 1209 3.6 1077  
LIFE 1382 100,760 4.0 4010 3.6 3649  
*2x Member All-American Produce of Dam  
Nom. All-American Jr. 3-Yr-Old & 4-Yr-Old*  
**5th Dam: C Aitkenbrae Starbuck Ada**  
EX-94-2E DOM 4\*  
2-05 2 362 25,000 3.6 908 3.4 845  
LIFE 1955 137,740 3.4 4747 3.2 4389  
*All-American Produce of Dam 2000 & 2001  
All-American Sr. 3-Yr-Old 1990  
Res. All-Time All-American 3-Yr-Old 2003*

# ILLINI *Golden Opportunity* SALE

# 49

## *Schluter Savannah Lee-Red-ET*

3132004965 100% RHA  
Milking 98 lbs.

Born: December 2, 2015

Fresh: March 2018

Kyle Schneider  
1410 Richview Ln.  
Greenville, IL 62246  
618-860-8519

**SCIENTIFIC B DEFIANT-ET-RC**  
**141123484 100% RHA TP TC TY TV TL TD**  
GTPI +1649  
PTA +511M -29F +5P 99%R 4/2018  
PTA -158NM -.17%F -.04%P  
PTA -1.0PL 3.14SCS -2.9DPR 5.9%DCE  
PTA +3.47T +2.46UDC +1.57FLC 98%R 4/2018

**HELMCREST DESTRY SARHA LEE-RED**  
**CAN 11165617 100% RHA**  
EX-90 EVVEE 6-07  
4-03 2 305 30,460 4.3 1307 3.1 954  
2-06 3 305 24,210 3.8 914 3.2 771

**REGANCREST S BRAXTON-ET**  
**61898423 TR TY TV TL TD**  
EX-95  
**SCIENTIFIC GOLD DIOR RAE-ET-RC**  
**138328405 CV**  
EX-92 DOM

**SCIENTIFIC DESTRY-ET-RC**  
**138122625 CD TY TV TL**  
EX-92  
**STONEDEN REDDEVIL ALANA-RED-ET**  
**CAN 7917496**  
VG-85-3Y CAN  
3-09 2 329 19,412 3.9 758 3.4 650  
2-04 2 308 16,278 3.7 604 3.0 487

**3rd Dam: Stelbro Rebecca Ayre VG-86**  
5-01 2 365 29,568 3.4 1012 3.1 946  
LIFE 105,755 3.5 3677 3.2 3419  
**4th Dam: Stelbro Elegant Rebecca-Red-ET**  
VG-86 20\*  
4-01 2 365 21,149 3.5 1091 3.1 950  
*All-American R&W Jr. 2-Yr-Old 2001*  
**5th Dam: Stelbro Renita Ranger-Red**  
EX-94-2E 8\*  
7-04 2 365 29,760 3.9 1168 3.1 924  
*All-American R&W Aged Cow & Sr. 2-Yr-Old*  
*Grand Champion Int'l R&W Show 2001*  
**6th Dam: Stelbro Enhancer Ripple-Red**  
EX-4E 9\*  
9-05 2 365 31,552 4.5 1413 3.2 1008  
LIFE 202,164 4.5 9112 3.4 6867  
**7th Dam: Stelbro Regal Rene EX-3E**  
LIFE 134,725 3.9 5190 3.4 4619  
**8th Dam: Stelbro Astra Starbrite VG-85**  
**9th Dam: Langstate Star VG-85**

# 50

## *Clearfield Brady Rock*

72825908 100% RHA

Born: June 1, 2017

Lila Sloan  
10016 E. Farm School Rd.  
Davis, IL 61019  
clearfield53@hotmail.com

**BUTZ-BUTLER ATWOOD BRADY-ET**  
**140610404 100% RHA TC TY TV TL TD**  
EX-93 GTPI +1483  
PTA -267M -26F -30P 98%R 4/2018  
PTA -239NM -.06%F -.08%P  
PTA -1.1PL 2.76SCS -4.3DPR 7.6%DCE  
PTA +3.12T +2.84UDC +1.61FLC 98%R 4/2018

**CLEARFIELD ISAAK ROCK-TW**  
**62232307 100% RHA**  
VG-85 V+VV 2-10  
2-03 2 365 26,630 3.7 996 3.1 827

**MAPLE-DOWNS-I G W ATWOOD-ET**  
**CAN 8956379**  
EX-90  
**REGANCREST BRASILIA-ET**  
**62496866**  
EX-92-2E DOM

**ME-DO-CREST ATWD ISAAK-ET**  
**65838567**  
**DREAMHART ATWOOD RAZ**  
**62232236**  
GP-84 V+VV+ 3-06  
2-04 2 365 25,570 4.4 1122 3.6 917



# ILLINI *Golden Opportunity* SALE



**Ms Do-N-Joy Dundie Laurie-ET EX-91**  
3rd Dam of Lot 51

**51**

## *Atwood Heifer Calf*

Johnathan Heinsoln  
34695 Kirkland Rd.  
Kirkland, IL 60146-8306  
815-979-5314  
redcarpetholsteins@yahoo.com

PENDING 100% RHA

Born: December 2017

**MAPLE-DOWNS-I G W ATWOOD-ET**  
**CAN8956379100%RHATRTPTYTVTLTD**  
EX-90 GTPI +1877  
PTA +14M +31F +5P 99%R 4/2018  
PTA +46NM +.11%F +.02%P  
PTA -0.6PL 3.05SCS -3.9DPR 9.7%DCE  
PTA +3.62T +2.48UDC +2.65FLC 99%R 4/2018

**BRAEDALE GOLDWYN**  
**CAN 10705608 CD TY TV TL**  
GP-84 GM  
**MD-DELIGHT DURHAM ATLEE-ET**  
**131704103**  
EX-92 GMD DOM

**REDCARPET LADDMANS LASAGNA**  
**3130383752 100% RHA**  
GP-83 +V+++ 2-10

**PALMYRA LADD MAN-P-ET-RC**  
**71506037 PC TY TV TL TD**  
**TTM RC SUPER LANVIN-ET**  
**69447117 TL TD**  
VG-86 EVVGV 4-05  
3-05 3 342 24,890 3.8 948 3.1 762  
4-06 3 305 24,230 4.2 1010 2.8 685

**3rd Dam: Ms Do-N-Joy Dundie Laurie-ET**  
EX-91  
4-03 2 365 34,000 3.6 1207 3.1 1048  
**4th Dam: Savage-Leigh Lil Linda-ET**  
EX-90 GMD DOM  
3-06 2 365 40,710 4.1 1650 3.1 1269  
**5th Dam: Savage-Leigh Belwood Linda**  
EX-92-2E GMD DOM  
2-10 2 365 40,240 5.8 2349 3.4 1358  
*1st National Fat & 1st Maryland Fat*  
LIFE 126,760 5.2 6576 3.2 4076  
**6th Dam: Savage-Leigh Star Linda-ET**  
VG-87 GMD  
2-02 2 365 30,890 4.0 1236 3.1 952  
**7th Dam: Savage-Leigh Glenview Linda**  
EX-90 GMD DOM  
6-08 2 365 41,820 4.6 1936 2.8 1168  
LIFE 150,300 4.4 6636 3.0 4528

# ILLINI *Golden Opportunity* SALE



**Luncrest Machree-1093-ET EX-93-2E**  
2nd Dam of Lot 52



**Go-Sho Bonvoyage Royale EX-94-3E**  
2nd Dam of Lot 53

# 52

## *Brite-Side Yoder Magnetic*

Oertel Farms, Inc.  
Jason Oertel  
32633 Delhi Rd.  
Brighton, IL 62012  
618-779-9060  
jtoertel@sbcglobal.net

**3132219776 100% RHA TR TL TD**

GTPI +2398  
PTA +291M +97F +18P 78%R 4/2018  
PTA +598NM +.32%F +.03%P  
PTA +2.6PL 2.82SCS -.3DPR 5.0%DCE  
PTA +2.06T +1.34UDC +1.80FLC 78%R 4/2018

**Born: June 1, 2016**

**Due: June 15, 2018 to 7HO12787**  
**Plain-Knoll King Royal-ET**

**WOODCREST MOGUL YODER-ET**  
**72254526 100% RHA TR TP TC TY TV TL TD**  
EX-90 GM GTPI +2690  
PTA +1243M +107F +53P 99%R 4/2018  
PTA +863NM +.21%F +.05%P  
PTA +5.1PL 3.02SCS -.3DPR 3.3%DCE  
PTA +1.90T +2.12UDC +1.69FLC 98%R 4/2018

**MOUNTFIELD SSI DCY MOGUL-ET**  
**3006972816 TR TP TC TY TV TL TD**  
EX-93 GM  
**WOODCREST PLANET YAKARA-ET**  
**3008363689**  
VG-85 DOM

**GOLDEN-OAKS MAGNIFICO-ET**  
**3013874047 100% RHA TL TD**  
VG-85 VVVV+ 2-05  
2-01 2 365 29,640 4.5 1348 3.1 925  
3-06 2 128 13,849 4.5 621 3.1 436 inc.

**AMIGHETTI NUMERO UNO-ET**  
**ITA 17990915143**  
GM  
**LUNCREST MACHREE-1093-ET**  
**62480189**  
EX-93-2E EEVVEE 6-10  
8-01 3 365 43,460 4.0 1751 3.1 1326  
6-08 3 365 40,830 4.2 1710 3.2 1290  
4-07 3 365 36,850 4.7 1733 3.0 1113  
5-09 3 293 35,650 3.9 1385 3.1 1104  
1-11 3 365 34,060 4.0 1354 3.0 1033  
9-07 3 220 21,680 3.8 829 3.1 646  
LIFE 239,160 4.1 9911 3.1 7411

**3rd Dam: Luncrest OTD Madison-794-ET**  
EX-92-3E GMD DOM  
6-07 2 365 32,390 4.6 1499 3.2 1021  
LIFE 197,210 4.4 8766 3.1 6192  
**4th Dam: Autumn-Ridge RD Meringue-ET**  
EX-90-2E  
7-01 2 365 32,670 3.4 1096 2.9 941  
Life: 139,910 3.1 4269 3.0 4165  
**5th Dam: Autumn-Ridge L Missy-ET**  
VG-87 GMD DOM  
7-10 3 365 38,400 3.5 1332 2.9 1120  
Life: 195,970 3.5 6777 3.0 5949  
**6th Dam: Col-Ray Barrett Mary**  
EX-93-2E GMD DOM  
8-05 2 365 30,280 3.4 1018 2.9 867  
Life: 149,130 3.4 5074 3.1 4590  
**7th Dam: Col-Ray Bootmaker Melisa**  
EX-90  
3-07 2 364 19,590 3.7 727  
**8th Dam: Tricialand Chief Trish**  
VG-85  
9-06 2 288 18,590 3.5 647

# ILLINI Golden Opportunity SALE

# 53

## Zehr-Go-Sho Atwood Royce

3133091870 100% RHA

Born: June 19, 2016

Daniel Zehr & Tessa & Stella Schmocker  
8722 E 1900 North Rd.  
Graymont, IL 61743  
815-743-5766

Due: August 13, 2018 to 54HO553  
Rainyridge Barnie-RC

**MAPLE-DOWNS-I G W ATWOOD-ET**  
**CAN 8956379 100% RHA TR TPT TY TV TL TD**  
EX-90 GTPI +1877  
PTA +14M +31F +5P 99%R 4/2018  
PTA +46NM +.11%F +.02%P  
PTA -0.6PL 3.05SCS -3.9DPR 9.7%DCE  
PTA +3.62T +2.48UDC +2.65FLC 99%R 4/2018

**BRAEDALE GOLDWYN**  
**CAN 10705608 CD TY TV TL**  
GP-84 GM  
**MD-DELIGHT DURHAM ATLEE-ET**  
**131704103**  
EX-92 GMD DOM

**ZEHR-GO-SLO DUN ROYALTY-ET**  
**3013444680 100% RHA**  
GP-82 VV+G+ 3-03  
2-00 2 305 11,650 4.0 467 3.3 388  
3-00 2 286 10,970 3.9 425 3.3 367

**REGANCREST DUNDEE-ET**  
**127640114 TY TV TL**  
EX-95  
**GO-SHO BONVOYAGE ROYALE**  
**135797231**  
EX-94-3E EEEEE 9-01  
4-07 2 318 31,810 4.2 1341 2.9 910  
3-05 2 365 30,770 4.3 1324 3.1 939  
2-06 2 249 18,530 3.9 723 3.0 556  
*3rd 4-Yr-Old WI State Show 2009*  
*3rd Sr. 3-Yr-Old Midwest Spring Nat'l 2008*  
*3rd Sr. 3-Yr-Old WI State Show 2008*  
*All-Wisconsin Sr. 2-Yr-Old 2007*  
*Grand Champion WI District 9 Show 2007*  
*HM Jr. Champion WI Jr. State Fair 2006*

**3rd Dam: Thal-View Milan Renee-ET**  
EX-90  
**4th Dam: Agarm Rose**  
EX-93  
4-04 2 325 19,506 4.8 928 3.6 701  
**5th Dam: Cranholme Rosebuck**  
VG-86  
6-11 2 352 22,500 4.8 1078 3.4 761  
LIFE 153,800 4.4 6770 3.5 5414  
**6th Dam: Pickland Marquis Rose**  
VG-88  
9-00 2 365 24,632 4.0 988 3.3 802  
LIFE 152,748 4.1 6268 3.4 5121

# 54

## To-Con Yoder Millie

3135402048 99% RHA TR TL TD

Born: January 10, 2016

Mitchell Dairy & Grain, LLC  
2917 Westfield Rd.  
Winnebago, IL 61088  
815-703-5614  
mitchellsholsteins@gmail.com

Fresh: January 29, 2018

**WOODCREST MOGUL YODER-ET**  
**72254526 100% RHA TR TP TC TY TV TL TD**  
EX-90 GM GTPI +2690  
PTA +1243M +107F +53P 99%R 4/2018  
PTA +863NM +.21%F +.05%P  
PTA +5.1PL 3.02SCS -0.3DPR 3.3%DCE  
PTA +1.90T +2.12UDC +1.69FLC 98%R 4/2018

**MOUNTFIELD SSI DCY MOGUL-ET**  
**3006972816 TR TP TC TY TV TL TD**  
EX-93 GM  
**WOODCREST PLANET YAKARA-ET**  
**3008363689**  
VG-85 DOM

**TO-CON MISSY MCCUTCHEN MAUD**  
**72552647 99% RHA**  
VG-85 E+V++ 3-10  
3-04 3 340 36,510 3.9 1418 2.9 1049  
2-02 3 365 28,770 4.0 1138 2.9 839

**DE-SU BKM MCCUTCHEN 1174-ET**  
**69990138 TR TP TC TY TV TL TD**  
EX-93 GM  
**TO-CON MEGHAN MILLION MISSY**  
GP-82 +G++V 5-04  
5-01 3 283 32,860 3.6 1197 2.8 912  
4-00 3 322 29,580 3.8 1119 2.9 847  
3-01 3 314 26,000 3.9 1016 3.1 812  
2-00 2 305 20,910 4.4 922 3.2 665  
Life: 111,550 3.9 4363 3.0 3310



# ILLINI *Golden Opportunity* SALE

# 55

## *Rbr-Frm Atwood Kaleidescope*

143810933 100% RHA

Born: April 5, 2016

Addison & Jacob Raber  
6654 E 1200 North Rd.  
Gridley, IL 61744  
815-867-0694  
amy@prairieland-designs.com

Due: August 23, 2018 to 7HO9264  
Lirr Drew Dempsey

**MAPLE-DOWNS-I G W ATWOOD-ET**  
CAN8956379100% RHATRTPTYTVTLTD  
EX-90 GTPI +1877  
PTA +14M +31F +5P 99%R 4/2018  
PTA +46NM +.11%F +.02%P  
PTA -0.6PL 3.05SCS -3.9DPR 9.7%DCE  
PTA +3.62T +2.48UDC +2.65FLC 99%R 4/2018

**LINDALE ABILITY KAROLYN**  
3014331206 100% RHA  
VG-85 V++VV 2-06  
2-00 3 305 18,500 4.8 879 3.4 631

**BRAEDALE GOLDWYN**  
CAN 10705608 CD TY TV TL  
GP-84 GM  
**MD-DELIGHT DURHAM ATLEE-ET**  
131704103  
EX-92 GMD DOM

**MR APPLES ABILITY-ET-RC**  
68571366 CV  
VG-86  
**LINDALE ALEX KALINDA**  
70755845  
VG-85 VVV+V 2-04  
2-03 2 354 28,070 4.0 1111 3.0 852

**3rd Dam: Kagwick Roy Kalilah VG-85**  
5-01 2 353 42,870 3.7 1574 3.2 1373  
Life: 199,890 3.5 7021 3.2 6354  
**4th Dam: Kagwick Osceola Kathy VG-88**  
7-04 2 311 26,030 4.0 1049 2.9 763  
Life: 147,730 3.7 5414 3.1 4587  
**5th Dam: Kagwick Leadman Kate VG-87**  
6-07 2 365 29,480 4.2 1239 3.2 950  
Life: 159,060 4.1 6556 3.2 5120

# 56

## *Holbric Atwood Apron-ET*

3146981423 100% RHA

Born: September 12, 2017

Holbric Holsteins  
1318 Rt. 23  
Harvard, IL 60033  
815-482-7426  
holbricholsteins@hotmail.com

**MAPLE-DOWNS-I G W ATWOOD-ET**  
CAN8956379100% RHATRTPTYTVTLTD  
EX-90 GTPI +1877  
PTA +14M +31F +5P 99%R 4/2018  
PTA +46NM +.11%F +.02%P  
PTA -0.6PL 3.05SCS -3.9DPR 9.7%DCE  
PTA +3.62T +2.48UDC +2.65FLC 99%R 4/2018

**KHW SHAMROCK ARALYN-ET-RC**  
70639380 100% RHA  
VG-88 VV+VE 5-06  
5-01 2 277 26,510 3.7 991 3.1 821  
4-02 2 277 22,940 4.2 956 3.1 705  
2-04 3 305 18,300 4.9 889 3.4 621

**BRAEDALE GOLDWYN**  
CAN 10705608 CD TY TV TL  
GP-84 GM  
**MD-DELIGHT DURHAM ATLEE-ET**  
131704103  
EX-92 GMD DOM

**LADYS-MANOR PL SHAMROCK-ET**  
68977120 TR TP TY TV TL TD  
EX-90 GM  
**KHW GOLDWYN AIKO-ET-RC**  
137658044 TV  
EX-91-2E EEEVE DOM 9-02  
5-07 2 365 29,150 5.1 1500 3.8 1104  
8-02 2 365 27,630 4.6 1275 3.9 1069  
2-06 2 365 24,660 6.4 1568 3.8 937  
LIFE 137,990 5.3 7261 3.9 5391

**3rd Dam: Kamps-Hollow Altitude-ET-RC**  
EX-95-2E DOM  
7-00 2 365 39,690 4.7 1849 3.3 1310  
LIFE 1844 144,460 4.4 6295 3.5 5015  
**4th Dam: Clover-Mist Alisha-ET-RC**  
EX-93-3E GMD DOM  
8-07 2 365 36,920 4.2 1553 3.2 1188  
LIFE 2999 226,470 4.7 10,659 3.4 7720  
**5th Dam: Clover-Mist Augy Star-ET \*RC**  
EX-94-4E DOM  
7-10 3 365 43,140 5.0 2136 3.3 1421  
LIFE 2486 206,250 4.7 9793 3.5 7187  
**6th Dam: D-R-A August**  
EX-96-4E DOM  
8-05 3 365 27,460 4.3 1187 3.2 871  
LIFE 3443 190,200 4.4 8281 3.3 4457  
*Nominated All-American Aged Cow 1986*  
*All-Wisconsin Aged Cow 1987*  
**7th Dam: D-R-A Ideal Precious Leader**  
EX-90-2E  
7-06 2 358 20,090 3.9 787 3.2 637  
LIFE 2456 133,250 4.0 5308  
**8th Dam: D-R-A Princess Lad Leader**  
EX-90-3E  
9-05 2 305 19,160 4.2 809

# ILLINI *Golden Opportunity* SALE



**KHW Shamrock Aralyn-ET-RC VG-88**  
Dam of Lot 56



**Ernlo Sheena Lynn-ET EX-91-2E DOM**  
2nd Dam of Lot 57

**57**

## *Crush Heifer Calf*

Holbric Holsteins  
1318 Rt. 23  
Harvard, IL 60033  
815-482-7426  
holbricholsteins@hotmail.com

PENDING 99% RHA

Born: December 3, 2017

### MAVERICK CRUSH

**CAN 12042760 TC TY TV TL TD**

GTPI +2290

PTA -122M +12F +12P 79%R 4/2018

PTA +354NM +.06%F +.06%P

PTA +4.5PL 2.33SCS +1.2DPR 7.3%DCE

PTA +3.72T +2.78UDC +1.86FLC 78%R 4/2018

### VAL-BISSON DOORMAN-ET

**CAN 107281711 TR TP TY TV TL TD**

VG-87

**EDG CLAIRE CLING-ET**

**71494758**

### HOLBRIC-ML SEASHELL-ET

**71616838 100% RHA TR TL TD**

VG-85 VEV++ 3-09

2-04 2 365 26,640 4.2 1130 3.4 898

3-09 2 359 22,100 4.7 1041 3.8 845

### SULLY HART MERIDIAN-ET

**69951907 TR TP TY TV TL TD**

GM

**ERNLO SHEENA LYNN-ET**

**137676635**

EX-91-2E EEEEE DOM 6-00

5-04 2 365 32,190 5.0 1607 3.1 1010

2-04 2 365 28,340 4.9 1402 3.4 975

### 3rd Dam: Ernlo Daisy Lynn-ET

EX-90 DOM

2-03 2 365 33,160 3.5 1174 3.3 1093

### 4th Dam: Kerndtway Jolt Daisy-ET

EX-94-2E GMD DOM

5-05 2 365 35,090 4.1 1498 3.1 1072

*HHM All-American Sr. 2-Yr-Old 1999*

### 5th Dam: Kerndtway Bstar Dime-ET

EX-90 GMD DOM

7-05 2 347 44,310 4.7 2061 2.7 1207

LIFE 167,139 4.2 6978 2.9 4917

### 6th Dam: Kerndtway Dollar Enhancer-ET

VG-88

LIFE 147,790 3.7 5456 3.0 4365

### 7th Dam: Al-Man Bell Julie

VG-87 GMD DOM

LIFE 194,710 3.9 7562 3.0 5861

### 8th Dam: Al-Man Mars Juliet

EX-90 DOM

5-11 2 365 29,610 3.4 1006 2.9 851

LIFE 149,450 3.4 5122 2.9 2749

### 9th Dam: Al-Man Apollo Jessie

VG-85 DOM

5-09 2 365 24,910 3.6 892

LIFE 103,030 3.5 3571 3.0 584

### 10th Dam: Al-Man June Standout

VG-85

4-10 2 365 23,140 3.9 892

### 11th Dam: Al-Man Jewel Homestead

VG-87

# ILLINI *Golden Opportunity* SALE



**Krull Broker Elegance EX-96-3E GMD DOM**  
3rd Dam of Lot 58, 4th Dam of Lot 59

# 58

## *Ziems Brady Estella-ET*

Ziems Farms & Tim & Leah Ziembra  
1397 Hillside Rd.  
Cambridge, WI 53523  
315-730-3312  
tziembra@hotmail.com

3129141398 100% RHA

**Born: March 4, 2016**

**Fresh: March 1, 2018**

*Entered as a Jr. 2-Yr-Old at the  
2018 Midwest Nat'l Spring Show*

**BUTZ-BUTLER ATWOOD BRADY-ET**  
**140610404 100% RHA TC TY TV TL TD**  
EX-93 GTPI +1483  
PTA -267M -26F -30P 98%R 4/2018  
PTA -239NM -.06%F -.08%P  
PTA -1.1PL 2.76SCS -4.3DPR 7.6%DCE  
PTA +3.12T +2.84UDC +1.61FLC 98%R 4/2018

**MAPLE-DOWNS-I G W ATWOOD-ET**  
**CAN 8956379 TR TP TY TV TL TD**  
EX-90  
**REGANCREST BRASILIA-ET**  
**62496866**  
EX-92-2E DOM

**ZIEMS-EF DUNDEE EBONY-ET**  
**64224182 100% RHA**  
EX-92-2E EEEEE 6-05  
5-04 2 363 22,440 4.6 1038 3.3 736  
2-05 2 305 19,420 4.3 834 3.2 616

**REGANCREST DUNDEE-ET**  
**127640114 TY TV TL**  
EX-95  
**BUDJON-JK GIBSON ENCHANT-ET**  
**135096040**  
EX-92-3E EEEVE 10-02  
3-11 2 365 27,910 3.7 1020 3.1 856  
6-05 2 365 26,210 3.7 982 2.9 766  
9-04 2 365 23,700 4.0 957 3.1 733  
2-01 3 365 23,630 3.8 888 2.9 695  
LIFE 1620 108,910 3.8 4115 3.0 3275

**3rd Dam: Krull Broker Elegance**  
EX-96-3E GMD DOM  
5-07 2 365 40,950 3.7 1522 3.1 1272  
LIFE 2356 183,710 3.7 6878 3.4 6267  
*Wisconsin Cow of the Year 2002*  
*HM All-American Aged Cow 1999 & 2000*  
*HM All-Canadian Mature Cow 1999*  
**4th Dam: Krull Starbuck Excellency**  
EX-90 DOM  
3-03 2 365 27,140 3.5 937 3.2 878  
**5th Dam: Krull TT Excellency**  
EX-90 DOM  
3-02 2 363 24,319 3.5 862 3.4 829  
LIFE 1733 109,780 3.7 4077 3.3 3605  
**6th Dam: Krull Boot Mark Excellency**  
EX-92-2E GMD DOM  
6-06 2 365 27,410 3.8 1040 3.1 868  
LIFE 3026 210,440 3.5 7105 3.0 4634  
**7th Dam: Krull Kingstead Excellency**  
EX-92-4E GMD



# ILLINI *Golden Opportunity* SALE

# 59

## Ziems Diamondback Energy

Ziems Farms & Tim & Leah Ziembra  
1397 Hillside Rd.  
Cambridge, WI 53523  
315-730-3312  
tziembra@hotmail.com

Born: December 4, 2016  
Implanted with embryo on 3/12  
Crush x Ziems-LKH Damion Muddy-ET  
Dam of Lot 31  
3129141406 99% RHA

**MR D APPLE DIAMONDBACK-RC**  
**3013721049 99% RHA TP TY TV TL TD**  
EX-93 GTPI +1961  
PTA -355M +10F +10P 82%R 4/2018  
PTA +89NM +.09%F +.08%P  
PTA -0.2PL 2.98SCS -1.7DPR 6.8%DCE  
PTA +3.29T +2.48UDC +2.17FLC 79%R 4/2018

**ZIEMS ATWOOD ELANI-ET**  
**72773295 100% RHA**  
VG-85 V+G+V 2-06  
2-02 2 305 19,140 4.4 844 3.4 648  
5th Fall Yrlg Mid-West Spring Nat'l 2016

**VAL-BISSON DOORMAN-ET**  
**CAN 107281711 TR TP TY TV TL TD**  
VG-87  
**MS DELICIOUS APPLE-RED-ET**  
**139236776 TV TD**  
EX-94

**MAPLE-DOWNS-I G W ATWOOD-ET**  
**CAN 8956379**  
EX-90  
**ZIEMS-EF DUNDEE EBONY-ET**  
**64224182**  
EX-92-2E EEEEE 6-05  
5-04 2 363 22,440 4.6 1038 3.3 736  
2-05 2 305 19,420 4.3 834 3.2 616

**3rd Dam: Budjon-JK Gibson Enchant-ET**  
EX-92-3E  
3-11 2 365 27,910 3.7 1020 3.1 856  
LIFE 1620 108,910 3.8 4115 3.0 3275  
**4th Dam: Krull Broker Elegance**  
EX-96-3E GMD DOM  
5-07 2 365 40,950 3.7 1522 3.1 1272  
LIFE 2356 183,710 3.7 6878 3.4 6267  
*Wisconsin Cow of the Year 2002*  
*HM All-American Aged Cow 1999 & 2000*  
*HM All-Canadian Mature Cow 1999*  
**5th Dam: Krull Starbuck Excellency**  
EX-90 DOM  
3-03 2 365 27,140 3.5 937 3.2 878  
**6th Dam: Krull TT Excellency**  
EX-90 DOM  
3-02 2 363 24,319 3.5 862 3.4 829  
LIFE 1733 109,780 3.7 4077 3.3 3605  
**7th Dam: Krull Boot Mark Excellency**  
EX-92-2E GMD DOM  
6-06 2 365 27,410 3.8 1040 3.1 868  
LIFE 3026 210,440 3.5 7105 3.0 4634  
**8th Dam: Krull Kingstead Excellency**  
EX-92-4E GMD

# 60

## Marwood-Ridge Aftershock Pride

3138922302 100% RHA

Born: March 1, 2017

Full Sister is VG-87

Renee Bauman  
8016 S. Union Rd.  
Union, IL 60180  
815-955-0874  
baumanfarms@aol.com

**MS ATLEES SHT AFTERSHOCK-ET**  
**65249839 100% RHA**  
EX-92 GTPI +1674  
PTA -20M +1F -14P 99%R 4/2018  
PTA -28NM +.01%F -.05%P  
PTA +1.3PL 2.84SCS -2.1DPR 10.9%DCE  
PTA +2.23T +1.97UDC +1.20FLC 99%R 4/2018

**MARWOOD-RIDGE BOLTON PHANCY**  
**140124642 100% RHA**  
VG-88 VE++E 7-09  
3-06 2 365 26,550 4.5 1204 3.1 836  
5-00 2 365 26,120 4.0 1057 2.9 763  
2-02 2 365 19,360 4.6 889 3.4 649  
7-08 2 305 19,160 4.3 818 2.9 547  
6-03 2 365 15,780 4.8 754 3.4 543  
LIFE: 118,510 4.5 5329 3.2 3780

**PICSTON SHOTTLE-ET**  
**GBR 598172 TY TV TL**  
EX-95  
**MD-DELIGHT DURHAM ATLEE-ET**  
**131704103 BT**  
EX-92 GMD DOM

**SANDY-VALLEY BOLTON-ET**  
**131823833 BY TV TL**  
EX-90 GM  
**MARWOOD-RIDGE JOLT PAPRIKA**  
**133950078**  
EX-91-2E EEEVE 11-10  
6-04 2 365 23,340 3.9 915 3.0 703  
7-08 2 365 22,390 4.0 899 3.0 675  
9-08 2 365 21,970 4.2 916 3.0 660  
4-10 2 365 21,370 4.0 859 3.1 671  
2-04 2 365 19,700 3.8 758 3.1 605  
3-08 2 365 18,270 4.0 736 3.3 599  
12-02 2 220 12,170 4.2 515 2.6 319  
LIFE 3459 170,170 4.2 7135 3.2 5448

# ILLINI *Golden Opportunity* SALE

# 61

## Golden-Oaks Mack 6549

Golden Oaks Farm  
PO Box 37  
Wauconda, IL 60084-0037  
847-224-7861  
eheinzmann@crown-chicago.com

3013874023 99% RHA  
EX-90 EEEVE 3-07  
2-10 3 306 31,520 3.1 974 3.1 977  
1-11 3 292 23,940 3.2 775 3.2 772

**Born: March 3, 2014**  
**Fresh: January 2018**

**COYNE-FARMS SROCK MACK-ET**  
**70801841 99% RHA TR TP TC TY TV TL TD**  
VG-88 GTPI +2283  
PTA +256M +49F +14P 99%R 4/2018  
PTA +460NM +.14%F +.02%P  
PTA +4.2PL 2.84SCS +0.2DPR 4.6%DCE  
PTA +2.39T +1.78UDC +1.97FLC 99%R 4/2018

**LADYS-MANOR PL SHAMROCK-ET**  
**68977120 TR TP TY TV TL TD**  
EX-90 GM  
**FOX BERRY STREAM MYRA 619-ET**  
**63203661**  
VG-86 GMD DOM

**GOLDEN-OAKS EX RUCILLE-ET**  
**70560651 100% RHA**  
EX-90 EEEEV 3-08  
3-04 3 365 37,380 2.7 1014 3.1 1141

**WABASH-WAY EXPLODE-ET**  
**138905680 TY TV TL**  
VG-88 GM  
**OPSALE-K ALXNDR GOLD RUSE-ET**  
**65975156**

**3rd Dam: Dewgood Goldrush-ET VG-89**  
2-01 2 365 35,560 3.7 1329 2.8 980  
**4th Dam: Okato Marita-ET**  
EX-91-2E GMD DOM  
4-10 2 365 38,510 4.0 1540 2.9 1135  
LIFE 104,260 4.0 4221 3.2 3301  
**5th Dam: Okato Mattie Anita-ET VG-86**  
2-01 2 317 22,340 4.1 908 3.1 687  
**6th Dam: Cedar-Shadows Luke Amber-ET**  
VG-85 GMD  
2-02 2 365 31,410 3.5 1113 3.0 948  
**7th Dam: Cedar-Peak Mark Alice-ET VG-86**  
5-00 2 365 32,150 3.7 1194 2.8 914  
**8th Dam: Cedar-Peak Tradition Amy EX-90**  
4-00 3 365 27,580 3.5 973 2.7 754  
**9th Dam: Bar-Lee Valiant Arlene VG-86**  
**10th Dam: Bar-Lee Ivan Star Arlyn**  
VG-88 DOM  
**11th Dam: Bar-Lee Elsie Arnell VG-87 GMD**  
**12th Dam: Bar-Lee Whiz Arlene VG-88 GMD**

# 62

## Marwood-Ridge GdChp Babcock

Ken R. Bauman  
8016 S. Union Rd.  
Union, IL 60180  
815-955-0874  
baumanfarms@aol.com

3138922277 100% RHA

**Born: November 21, 2015**

**Due: May 8, 2018 to 7HO12131**  
**Farnear-BH Mr McGirt-ET**

**MR CHASSITY GOLD CHIP-ET**  
**140145553 100% RHA TR TP TY TV TL TD**  
EX-94 GTPI +1805  
PTA -233M +0F -22P 99%R 4/2018  
PTA +81NM +.03%F -.06%P  
PTA +1.5PL 2.67SCS -1.4DPR 3.5%DCE  
PTA +2.33T +2.21UDC +1.87FLC 99%R 4/2018

**BRAEDALE GOLDWYN**  
**CAN 10705608 CD TY TV TL**  
GP-84 GM  
**REGANCREST S CHASSITY-ET**  
**62496899 TY TL**  
EX-92 GMD DOM

**MARWOOD-RIDGE PIPPEN BILLIE**  
**138370541 100% RHA**  
VG-88 VEVEV 8-04  
5-04 2 365 34,500 3.9 1359 3.1 1055  
6-11 2 365 33,990 4.1 1378 3.0 1027  
8-09 2 365 33,220 3.6 1196 2.7 903  
2-08 2 365 28,670 3.8 1087 2.9 840  
LIFE 190,460 4.1 7750 3.2 6123

**GLEN-TOCTIN PIPPEN-ET**  
**17188116 CV TL**  
EX-92  
**MARWOOD-RIDGE MIKLIN BEBE**  
**128615205**  
GP-80 VEGFF 9-06  
6-03 2 365 26,740 4.9 1305 3.3 880  
7-06 2 365 24,760 5.1 1262 3.4 831  
3-08 2 365 22,920 4.9 1122 3.2 740  
9-01 2 365 22,550 4.9 1098 3.3 750  
5-02 2 362 18,800 5.1 951 3.5 664  
2-01 2 365 19,280 4.7 904 3.3 638  
10-09 2 197 12,830 4.9 629 3.1 394  
LIFE 169,150 5.0 8471 3.4 5765

# ILLINI *Golden Opportunity* SALE



**Woodlawn Dundee Daphne-ET EX-91**  
2nd Dam of Lot 63

# 63

## *Slater Heifer Calf*

Kaycia, Allyson & Luke Zimmerman  
1059 S. Hoisington Rd.  
Winnebago, IL 61088  
815-335-1184  
bzimmerman@foxvalley.net

PENDING 99% RHA

Born: October 18, 2017

**WALNUTLAWN SLATER-ET**  
CAN 11776096 99% RHA TR TPTY TV TL TD  
GTPI +2058  
PTA +293M +47F +16P 80%R 4/2018  
PTA +199NM +.13%F +.03%P  
PTA -1.5PL 2.97SCS -1.7DPR 5.6%DCE  
PTA +3.31T +2.19UDC +1.10FLC 78%R 4/2018

**STANTONS HIGH OCTANE-ET**  
CAN 11696704 TR TP TY TV TL TD

**MISTY SPRINGS LAVANGUARD SUE**  
CAN 9979603  
VG-89

**OAKFIELD ARMANI MS DAISY-ET**  
3127602490 100% RHA TR TL TD  
*Will be scored in April, potential VG*

**MR APPLES ARMANI-ET-RC**  
68571374 CD TP TY TV TL TD  
EX-90  
**WOODLAWN DUNDEE DAPHNE-ET**  
66443355  
EX-91 EEEEE 5-06  
2-03 3 360 23,270 3.4 793 3.1 712  
5-04 3 253 17,650 3.4 602 3.1 555

**3rd Dam: Woodlawn Durham Dolly-ET**  
EX-92  
5-04 2 305 29,190 4.1 1194 3.1 911  
LIFE 1626 119,530 4.0 4829 3.4 1046  
**4th Dam: Woodlawn Juror Daisy**  
EX-93-3E DOM  
6-06 2 305 37,060 3.8 1407 3.1 1146  
LIFE 2434 220,760 4.0 8927 3.2 7011  
**5th Dam: Gorecroft W Victor Doll**  
EX-90  
2-03 3 365 30,660 3.4 1045 2.9 897  
LIFE 1625 133,400 3.5 4636 3.0 3962  
**6th Dam: C Gorecroft Dolly**  
EX-90 GMD  
8-11 3 365 42,500 4.3 1813 2.7 1131  
LIFE 1992 184,380 3.8 6994 2.8 5152



# ILLINI *Golden Opportunity* SALE



**Misty-Springs Shottle Silk-ET EX-90**  
2nd Dam of Lot 64

**64**

*Miss Silks Sassy*

Gingerich, Schmocker & Powell  
13330 County Road 42  
Millersburg, IN 46543  
574-5363061

3142567996 99% RHA

Born: July 20, 2017

**MR D APPLE DIAMONDBACK-RC**  
**3013721049 99% RHA TP TY TV TL TD**  
EX-93 GTPI +1961  
PTA -355M +10F +10P 82%R 4/2018  
PTA +89NM +.09%F +.08%P  
PTA -0.2PL 2.98SCS -1.7DPR 6.8%DCE  
PTA +3.29T +2.48UDC +2.17FLC 79%R 4/2018

**MS SILK GOLD CHIP SILVIA-ET**  
**3125564016 100% RHA**  
GP-83 VVG+ 2-04

**VAL-BISSON DOORMAN-ET**  
**CAN 107281711 TR TP TY TV TL TD**  
VG-87  
**MS DELICIOUS APPLE-RED-ET**  
**139236776 TV TD**  
EX-94

**MR CHASSITY GOLD CHIP-ET**  
**140145553 TR TP TY TV TL TD**  
EX-94  
**MISTY SPRINGS SHOTTLE SILK-ET**  
**CAN 7639269**  
EX-90 EEEEEV 4-10  
2-04 2 351 37,125 5.2 1948 3.0 1108

**3rd Dam: Willsona Freelance Sizzle**  
VG-86 10\*  
2-02 3 335 25,490 3.9 1003 2.9 739  
**4th Dam: Gen-I-Beq Convincer Silver**  
VG-88 16\*  
3-11 2 330 26,338 3.7 974 2.8 737  
**5th Dam: Glen Drummond Splendor**  
VG-86 36\*  
4-10 2 314 26,510 4.2 1124 3.0 795  
**6th Dam: Glen Drummond Aero Flower**  
VG-88 18\*  
2-03 2 326 25,622 4.0 1032 3.2 820  
**7th Dam: Glen Drummond Shower-ET**  
EX 14\*  
4-10 2 365 28,583 4.8 1380 3.4 972  
**8th Dam: Glen Drummond SC Jo Beth**  
EX-2E 7\*  
5-09 3 305 31,358 4.0 1263 972  
LIFE 6 lact 141,637 4.2 3593 2.3 3258  
**9th Dam: Glen Drummond Matt Beth**  
VG-85 4\*  
11-10 2 365 25,038 3.7 935 2.6 651  
LIFE 5 lact 105,953 4.1 4295  
**10th Dam: Glen Drummond Marquis Beth**  
VG  
**11th Dam: Ferglynn Rag Apple Berta**  
VG 3\*

# ILLINI *Golden Opportunity* SALE

# 65

## Kingboy Heifer Calf

PENDING 99% RHA

Born: March 2, 2018

J. Thomas Wiker  
1017 County Road J  
Mineral Point, WI 53565  
608-319-1091  
wiker@yousq.net

**MORNINGVIEW MCC KINGBOY-ET**  
**72044077 99% RHA TR TP TC TY TV TL TD**  
EX-92 GTPI +2453  
PTA +1213M +47F +40P 99%R 4/2018  
PTA +521NM +.01%F +.01%P  
PTA +3.1PL 2.69SCS +1.0DPR 3.8%DCE  
PTA +3.21T +2.63UDC +1.25FLC 99%R 4/2018

**DE-SU BKM MCCUTCHEN 1174-ET**  
**69990138 TR TP TC TY TV TL TD**  
EX-93 GM  
**MORNINGVIEW SUPER MEGAN-ET**  
**68654508 TY**  
EX-91 DOM

**DEBOER PAUL CELLO-ET**  
**57113832 100% RHA**  
VG-86 +VV+E 5-01  
4-02 2 305 25,930 3.8 982 3.1 803  
3-02 2 305 19,240 4.2 812 3.4 651  
2-02 2 309 17,930 3.9 694 3.2 579

**ENSENADA JEEVES PAUL-ET**  
**66451345**  
VG-88  
**DEBOER GOLDWYN SNOW CHERISH**  
**56183362**  
VG-87 VVVVE 6-04  
3-03 2 365 28,080 3.8 1065 3.2 908  
4-09 2 365 27,690 3.9 1088 3.3 910  
6-07 2 365 25,900 3.1 814 3.3 845  
2-04 2 279 14,160 4.6 658 3.5 497  
LIFE 1884 120,490 3.9 4754 3.4 4126

**3rd Dam: DeBoer Lou Sno Cherub-ET**  
GP-83  
5-05 2 365 28,040 4.4 1241 3.5 978  
LIFE 1659 106,650 4.3 4599 3.6 3793  
**4th Dam: DeBoer Fred Snow Angel**  
EX-90 GMD DOM  
3-04 2 340 39,990 5.1 2028 3.5 1407  
LIFE 2481 178,890 5.0 9007 3.4 6039  
**5th Dam: DeBoer Highlight Snowstorm**  
4-00 2 365 34,910 6.3 2209 3.3 1164  
LIFE 2673 217,030 5.4 11643 3.4 7430

# 66

## Twin-Prairie Spur Sable

3134442287 100% RHA

Born: December 31, 2015

Brennan Woker  
754 Dudleyville Rd.  
Greenville, IL 62246  
618-367-0263

Fresh: December 25, 2017

Bred: March 12, 2018 to -  
Mr D Apple Diamondback-RC

**DE-SU 527 SPUR-ET**  
**66636663 100% RHA TR TP TY TV TL TD**  
EX-92 GM GTPI +1973  
PTA +1121M +7F +18P 99%R 4/2018  
PTA +239NM -.12%F -.06%P  
PTA +3.2PL 2.80SCS -1.9DPR 5.7%DCE  
PTA +1.89T +1.72UDC +1.12FLC 99%R 4/2018

**ENSENADA TABOO PLANET-ET**  
**60597003 TR TP TY TV TL TD**  
EX-92 GM  
**DE-SU 7012-ET**  
**62720570**  
EX-92 GMD DOM

**TWIN-PRAIRIE SANCHEZ SATIN**  
**71780373 100% RHA**  
VG-86 VVG+  
3-01 2 305 29,780 4.0 1193 3.0 906  
2-00 2 314 21,210 3.4 728 3.0 640

**GEN-MARK STMATIC SANCHEZ**  
**134422312 TR TP TY TV TL TD**  
EX-94  
**TWIN-PRAIRIE DREAM ON DAISY**  
**69482281**  
GP-84 VVV++ 5-09

# ILLINI *Golden Opportunity* SALE

# 67

## *Stookeyholm Seaver Lacie*

*Potential 10th Generation VG-EX!*  
143859668 100% RHA

**Born: March 2, 2016**  
**Fresh: January 6, 2018**

Brennan Woker  
754 Dudleyville Rd.  
Greenville, IL 62246  
618-367-0263

### **R-E-W SEAVER-ET**

**137012381 100% RHA TR TP TY TL TD**

GTPI +1741

PTA -412M -25F +0P 99%R 4/2018

PTA -41NM -.04%F +.05%P

PTA -0.1PL 2.69SCS -0.1DPR 8.3%DCE

PTA +1.86T +1.73UDC +1.48FLC 98%R 4/2018

### **STOOKEYHOLM HAWK LOGAN**

**142260913 100% RHA**

VG-87 EEV+V 5-05

2-06 2 299 19,150 3.3 628 3.2 618

### **BRAEDALE GOLDWYN**

**CAN 10705608 CD TY TV TL**

GP-84 GM

**MORNINGVIEW DRH SANTA-ET**

**133019872 TV TL**

VG-88 DOM

### **MR DUNDEE HAWK-ET**

**139717107 TV TL**

**MS STOOKEYHOLM JET LUCIOUS**

**138730343**

EX-90-2E EVEVE 6-00

5-03 2 305 20,840 3.7 767 3.0 635

3-09 2 305 19,420 4.3 839 3.0 577

### **3rd Dam: Tex-Stein Durham Lilac**

VG-85

2-02 2 295 23,530 3.2 743 3.0 717

### **4th Dam: Tex-Stein Heath Lilly**

VG-87

4-09 2 305 21,040 3.5 734 3.0 626

### **5th Dam: Tex-Stein Luke Smith**

EX-90

3-03 3 365 29,610 4.0 1177 3.2 941

### **6th Dam: Tex-Stein Fancy Paul Baby**

VG-87

7-07 3 365 33,130 4.2 1396 3.0 1003

LIFE 2129 161,260 4.3 6862 3.2 5088

### **7th Dam: Tex-Stein Russ Chads Baby**

EX-90 GMD DOM

3-09 3 365 33,710 4.0 1337 3.0 1008

LIFE 1888 145,400 4.0 5821 3.0 4376

### **8th Dam: Tex-Stein Sexation Molly**

EX-92-3E DOM

5-02 2 365 25,070 4.1 1023 2.8 695

LIFE 2094 133,190 3.9 5216 2.9 3856

### **9th Dam: Whitis Fury Katrina**

VG-85

# 68

## *Rising-Sun Tony Tessa*

*Potential 12th Generation VG-EX!*  
144098929 100% RHA

**Born: January 15, 2016**  
**Fresh: February 12, 2018**

Brennan Woker  
754 Dudleyville Rd.  
Greenville, IL 62246  
618-367-0263

### **STOOKEYHOLM DEMPSEY TONY**

**143477682 100% RHA**

### **RISING-SUN FINALCUT ITESA**

**141244974 100% RHA**

EX-91 EEEEE 5-08

2-06 2 305 21,070 3.6 750 2.8 593

3-09 2 305 18,080 3.7 668 2.7 497

*2nd Mid-East Fall Nat'l Fall Yrlg 2012*

*4th Mid-East Fall Nat'l Fall Calf 2011*

### **LIRR DREW DEMPSEY**

**61083609 TR CD TP TY TV TL TD**

EX-93

**STOOKEYHOLM TOOTSIE-POP**

**138294045**

EX-93-2E

### **GILLETTE FINAL CUT-ET**

**CAN 7329252 TV TL**

VG-85

**RISING-SUN BLITZ ITASIA**

**138077073**

VG-85 VVV++

### **3rd Dam: Rising-Sun HiMetro Ila**

VG-88

3-02 2 305 34,020 3.9 1319 3.1 1057

### **4th Dam: Rising-Sun Durham Ida Belle**

EX-92-2E

3-05 2 305 38,370 4.3 1663 3.0 1150

### **5th Dam: Onceda-Baugo Lee Ivy-ET**

EX-91-2E

4-02 2 305 39,220 3.9 1533 3.2 1244

### **6th Dam: Sterlingdale Inspiration-ET**

EX-90

LIFE 2293 147,550 4.3 6320 3.2 4708

### **7th Dam: Sterlingdale Sexation F May**

EX-91-2E DOM

LIFE 2479 148,300 4.4 6458 3.3 4913

### **8th Dam: Scotchman Star May**

EX-90

4-05 2 365 24,440 3.6 884 2.9 697

### **9th Dam: Crescent-Fury May**

EX-91-3E DOM

LIFE 2192 134,430 4.1 5556 2.9 1362

*Res. All-American Produce of Dam 1978*

### **10th Dam: Crescent-Beauty Talent Fury**

EX-90

**11th Dam: Gene-Acres Felicia May Fury**

EX-97-5E



# ILLINI *Golden Opportunity* SALE

# 69

## *Robthom Jamison Aspen*

Dennis D. Bressner  
18813 E. 1100 North Rd.  
Fairbury, IL 61739  
815-848-3048  
denbressner@gmail.com

Born: December 25, 2014  
Due: June 2018 to 200HO2427  
Ardross Sterling-ET-RC  
*Potential 11th Generation VG-EX!*  
3125567248 100% RHA

### **ROBTHOM JAMESON-ET**

**141874157 100% RHA**  
GTPI +1827  
PTA -40M +23F -7P 82%R 4/2018  
PTA +181NM +.09%F -.02%P  
PTA +1.7PL 2.76SCS -.6DPR 5.2%DCE  
PTA +0.94T +0.68UDC +0.33FLC 78%R 4/2018

### **DIXIE-LEE BOLIVAR ADYSON-ET**

**139035227 100% RHA**  
VG-89 VEV+E 6-01  
6-09 2 365 28,810 3.3 963 3.0 870  
5-05 2 365 27,600 3.5 965 2.8 780  
2-03 2 365 25,540 3.4 874 2.9 744  
3-09 2 365 24,910 3.4 845 3.0 738  
LIFE 1798 126,180 3.5 4356 3.0 3796

### **MR CHASSITY GOLD CHIP-ET**

**140145553 TR TP TY TV TL TD**  
EX-94  
**ROBTHOM JIANA OUTSIDE-ET**  
**135004232**  
EX-94-2E

### **END-ROAD PVF BOLIVER-ET**

**123586443 TY TV TL TD**  
EX-96 GM  
**DIXIE-LEE WIN ADDY-ET**  
**123902337**  
EX-93-2E EEEEE GMD DOM 7-02  
4-10 2 365 57,705 4.0 2296 3.1 1781  
*1st MO Milk & 1st MO Fat*  
7-07 2 365 36,940 4.3 1601 3.0 1091  
2-03 2 365 30,700 3.9 1187 3.1 957  
LIFE 1527 159,310 4.0 6443 3.2 5027

### **3rd Dam: Dixie-Lee Aspen-ET**

EX-92 GMD DOM  
6-01 2 365 31,520 3.8 1193 3.2 997

### **4th Dam: Patrick-Orchard MW Abbie-ET**

EX-93-2E GMD DOM  
4-08 2 365 35,920 4.1 1458 3.1 1120

### **5th Dam: Lylehaven Mark Abbie-ET**

VG-86 GMD DOM  
3-09 2 365 31,120 3.6 1116 2.9 898

### **6th Dam: Yarsons Apolo Havn Amber-ET**

VG-86 GMD DOM  
3-04 2 365 29,840 3.9 1170 3.3 974

### **7th Dam: SueLawn Apollo Lee**

EX-90 GMD DOM  
9-00 2 365 26,480 4.9 1286  
LIFE 2741 161,390 4.6 7404

### **8th Dam: F-G-P Osborndale Dean Lu Lu**

EX-91-3E GMD  
5-01 2 305 18,430 4.4 806  
LIFE 3055 158,380 4.5 7124

### **9th Dam: F G P Osborndale Emperor Lucy**

EX-90-2E GMD  
10-09 2 365 20,200 4.0 807  
LIFE 3170 150,007 4.1 6124

### **10th Dam: Sumco Emperor Shirley**

VG-85  
8-11 2 365 20,041 3.9 786  
LIFE 2340 112,825 3.8 4314

# 70

## *Shanks Awesome Scarlett 213-RC*

3142495504 100% RHA

Born: March 13, 2017

Philip J. Shanks  
1976 Woodlawn Rd.  
Steward, IL 60553  
815-560-7615  
shanksp1992@gmail.com

### **LUCK-E AWESOME-RED**

**72186769 100% RHA CV TC TY TL TD**  
GTPI +1566  
PTA -915M -16F -24P 92%R 4/2018  
PTA -208NM +.07%F +.01%P  
PTA -0.9PL 3.12SCS -2.3DPR 9.4%DCE  
PTA +2.92T +3.59UDC +1.21FLC 87%R 4/2018

### **SCO-LO DURHAM SKYLARK-ET**

**141342216 100% RHA**  
EX-91-2E EEVVE 6-10  
4-11 2 305 27,360 3.0 820 2.8 755  
3-04 2 305 22,050 3.8 833 2.8 615  
2-01 2 305 15,310 3.8 581 2.7 421

### **APPLES ABSOLUTE-RED-ET**

**139358472 CV TC TY TL TD**  
EX-94  
**LUCK-E ADVENT ASIA-ET-RC**  
**63437444 TL TD**  
EX-94

### **REGANCREST ELTON DURHAM-ET**

**2250783 TR CV TL**  
EX-90 GM  
**ALGONQUIN LORENZO SKYLARK**  
**CAN 8873912**  
EX-92 EEEVE 4-10  
2-00 2 365 21,259 3.6 763 3.1 659

# ILLINI *Golden Opportunity* SALE



**Holbric Spa Jolly-Red VG-88**  
Dam of Lot 71

**71**

## 5 #1 Ammo-P IVF Embryos

Curtis, Evelyn & Agnes Griffin  
19436 220th St. NE  
Thief River Falls, MN 56701  
507-269-4640  
karakesh5@hotmail.com

Reverse Sorted IVF Embryos

**MR LEANINGHOUSE AMMO-P-RC**  
**74146951 99% RHA PC TC TY TV TL TD**  
GTPI +2168  
PTA +728M +33F +25P 79%R 4/2018  
PTA +272NM +.02%F +.01%P  
PTA +0.8PL 2.88SCS -1.2DPR 4.3%DCE  
PTA +3.15T +2.82UDC +1.72FLC 79%R 4/2018

**MORNINGVIEW MCC KINGBOY-ET**  
**72044077 TR TP TC TY TV TL TD**  
EX-92  
**MS ROLL-N-VIEW ALTHEA-RED-ET**  
**72193370 PC TV TL TD**  
EX-91

**HOLBRIC SPA JOLLY-RED**  
**3126918404 100% RHA**  
VG-88 VEVVV 2-09  
2-03 2 365 24,300 4.1 1000 3.5 853  
*Nom. All-American R&W Sr. Best 3 2017*  
*9th Sr. 2-Yr-Old Int'l RW Show 2017*  
*2nd Sr. 2-Yr-Old Midwest Fall Nat'l R&W Show 2017*  
*Grand, Int. & 1st Sr. 2-Yr-Old & BU MN Holstein*  
*Dist. 10 Show 2017*  
*Supreme, Best Udder of Show, Grand, Int. & 1st Sr.*  
*2-Yr-Old Holstein Pennington Co Fair 2017*  
*MN All-Minnesota R&W Sr. 2-Yr-Old 2017*  
*HM All-American R&W Jr. Best 3 2016*  
*All-Minnesota R&W Winter Yearling 2016*  
*1st Winter Yrlg MN Holstein Dist. 10 Show 2016*

**HOLBRIC-ML SPA-ET-RC**  
**70075844 TY**  
**MILGENE ADVENT JELLY-ET-RC**  
**63588798**  
VG-85 VVV+V 4-04  
6-00 2 365 30,600 4.8 1463 3.4 1027  
3-09 2 365 30,350 5.0 1523 3.6 1088  
7-09 2 203 22,500 4.6 1041 3.2 709  
2-04 2 365 21,800 4.7 1014 3.6 789  
LIFE 2035 141,460 5.1 7160 3.7 5230

**3rd Dam: Fitz-Sher-Hill Dur Jemini-RC**  
EX-93-3E DOM  
7-03 2 365 30,390 3.6 1084 2.9 870  
LIFE 2306 148,660 3.7 5574 3.2 4742  
**4th Dam: Fitz-Sher-Hill Janella-ET-RC**  
EX-90-2E  
LIFE 2493 188,990 3.6 6732 3.1 5923  
**5th Dam: Ja-Bob Jubilance-Red-ET**  
VG-89  
LIFE 2038 125,920 4.4 5532 3.4 4243  
**6th Dam: Sky-Hi Mars Helen-ET**  
EX-92 GMD DOM  
**7th Dam: Sky-Hi Boots Honey**  
VG-86 GMD  
**8th Dam: Sky-Hi Majority Honey**  
EX-90 GMD

# ILLINI *Golden Opportunity* SALE



**Val-Bisson Bookem Dona EX-92**  
Dam of Lots 72 & 73



**Val-Bisson Shottle Imelda EX-94 8\***  
2nd Dam of Lots 72 & 73

**72**

*6 #1 IVF Sexed Artist Embryos*

**73**

*6 #1 IVF Sexed Humblenkind Embryos*

GenoSource  
Amanda Hauck, Marketing Manager  
2188 78th St.  
Blairstown, IA 52209  
570-765-0536  
amandahauck@genosource.com

**SIRE OF LOT 71:**  
**STONE-FRONT ARTIST-ET**  
**3136876946 99% RHA TR TY TV TL TD**  
GTPI +2288  
PTA +278M +29F +19P 76%R 4/2018  
PTA +350NM +.07%F +.04%P  
PTA +2.9PL 2.49SCS -0.6DPR 5.8%DCE  
PTA +4.16T +2.93UDC +1.70FLC 75%R 4/2018  
*Crush x McCutchen*

**VAL-BISSON BOOKEM DONA**  
**CAN 107281662**  
EX-92 EEEEE 5-09  
2-02 3 305 25,920 4.0 1025 3.1 801  
*Full Sister to Doorman*

**SIRE OF LOT 72:**  
**COOKIECUTTER HUMBLENKIND-ET**  
**3130915852 100% RHATRTPTCTYTYTVTLTD**  
GTPI +2800  
PTA +1240M +68F +48P 79%R 4/2018  
PTA +885NM +.08%F +.04%P  
PTA +8.2PL 2.78SCS +2.5DPR 3.8%DCE  
PTA +2.92T +3.14UDC +2.62FLC 77%R 4/2018  
*Modesty x Epic*

**DE-SU 521 BOOKEM-ET**  
**66636657 TR TP TY TV TL TD**  
EX-90 GM  
**VAL-BISSON SHOTTLE IMELDA-ET**  
**CAN 106173432**  
EX-94 EEEEE 7-02 8\*  
4-03 2 365 40,505 3.8 1550 3.4 1378  
6-08 2 305 30,420 4.5 1379 3.7 1117  
1-11 2 365 25,531 4.2 1076 3.6 908  
LIFE 1106 104,156 4.2 4376 3.5 3675

**3rd Dam: Val-Bisson Goldwyn Maya-ET**  
VG-86 34\*  
5-09 2 365 39,800 3.7 1473 3.3 1313  
LIFE 3 lact 141,403 4.2 5972 3.5 4949  
**4th Dam: Val-Bisson Finley Dream**  
VG-87 14\*  
3-04 2 365 35,776 3.1 1116 3.1 1109  
LIFE 4 lact 122,285 3.2 3935 3.0 3668  
**5th Dam: Val-Bisson Rudolph Dakota**  
VG-88 9\*  
3-01 2 365 31,768 3.8 1206 3.1 985  
**6th Dam: Val-Bisson Supersire Dactyle**  
VG-86 2\*  
6-11 2 365 34,255 3.6 1239 2.6 891  
LIFE 5 lact 139,152 3.9 5445 2.9 4035  
**7th Dam: Val-Bisson Prelude Dahlia**  
VG-86 6\*  
4-11 2 321 34,218 3.8 1287 2.9 992  
**8th Dam: Loganway Blackstar Daily-ET**  
VG-86 6\*  
8-01 2 305 36,548 3.6 1323 2.8 1023  
LIFE 5 lact 189,122 3.7 6960 3.1 5863  
**9th Dam: Loganway Mark Delicious**  
VG-88 GMD DOM  
3-10 2 365 28,880 3.6 1047 2.7 780



# ILLINI *Golden Opportunity* SALE



**Regancrest S Chassity-ET EX-92 GMD DOM**  
2nd Dam of Lots 74 & 75

**74**

*5 #1 IVF Sexed Undenied Embryos*

**75**

*5 #1 IVF Sexed Tatoo Embryos*

Johnathan Heinsohn & Ryan Krull  
34695 Kirkland Rd.  
Krikland, IL 60146  
815-979-5314  
redcarpetholsteins@yahoo.com

**SIRE OF LOT 73:**

**OUR-FAVORITE UNDENIED-ET**

**3125220760 99% RHA TR TP**

GTPI +2185

PTA +305M +45F +14P 79%R 4/2018

PTA +255NM +.12%F +.02%P

PTA +0.6PL 2.96SCS -.9DPR 5.0%DCE

PTA +4.24T +2.32UDC +2.03FLC 79%R 4/2018

*Solomon x Atwood*

**MS CHASSITY ATWOOD 2485-ET**

**3013473922 100% RHA**

VG-87 VV+VV 2-09

2-05 3 305 25,740 3.3 857 2.7 694

**SIRE OF LOT 74:**

**DUCKETT CRUSH TATOO-ET**

**3137052923 99% RHATRTPCTYTVTLTD**

GTPI +2233

PTA +68M +8F +12P 76%R 4/2018

PTA +343NM +.02%F +.04%P

PTA +3.7PL 2.54SCS -1.1DPR 4.8%DCE

PTA +3.97T +3.63UDC +1.87FLC 76%R 4/2018

*Crush x Gold Chip*

**MAPLE-DOWNS-I G W ATWOOD-ET**

**CAN 8956379 TR TP TY TV TL TD**

EX-90

**REGANCREST S CHASSITY-ET**

**62496899 TY TL**

EX-92 EEEVE GMD DOM 4-05

3-10 2 365 42,280 4.3 1798 2.5 1070

2-01 2 365 36,680 4.3 1567 3.1 1124

LIFE 1071 105,520 4.2 4383 2.8 2959

*Global Cow of the Year 2011*

**3rd Dam: Regancrest Cinderella**

EX-92-2E GMD DOM

5-00 2 365 34,220 4.1 1418 3.1 1074

**4th Dam: Regancrest-PR Barbie-ET**

EX-92 GMD DOM

2-06 2 365 31,690 3.9 1237 3.3 1050

HM All-American Jr. 3-Yr-Old 2004

**5th Dam: Regancrest Juror Brina-ET**

EX-92 GMD

4-04 2 365 40,640 3.6 1478 2.8 1140

**6th Dam: Regancrest Aerostar Bert-ET**

EX-90 GMD DOM

5-02 2 365 37,790 3.6 1357 3.2 1215

LIFE 109,350 3.7 4031 3.3 3558

**7th Dam: Regancrest Mark Chairman Bea**

EX-91-2E GMD DOM

7-09 2 365 33,830 3.8 1276 3.1 1052

LIFE 140,130 4.1 5711 3.3 4616

**8th Dam: Regancrest Board Chairman Bea**

EX-90

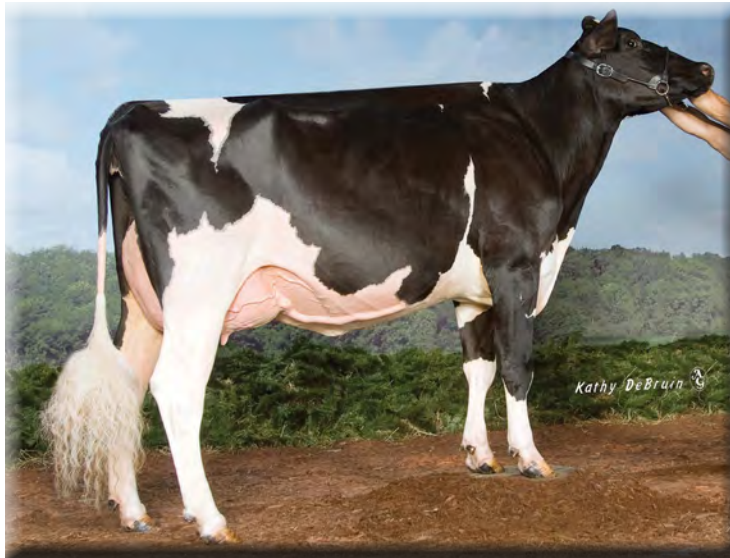
5-09 2 365 26,010 4.1 1059 3.4 884

**9th Dam: Regancrest Apache Standout Bea**

VG-86

LIFE 131,940 3.6 4744

# ILLINI *Golden Opportunity* SALE



**Ms Dundee Petra EX-94-2E**  
Dam of Lot 76

# 76

## 6 #1 DT McCutchen Embryos

O-C-E-C Embryos  
Scott Racha  
8566 Thompson Rd.  
Holland Patent, NY 13354  
315-865-5826  
scott.racha@yahoo.com

Free Shipping to Buyer

**DE-SU BKM MCCUTCHEN 1174-ET**  
**69990138 99% RHA TR TP TC TY TV TL TD**  
EX-93 GM GTPI +2300  
PTA +827M +51F +32P 99%R 4/2018  
PTA +404NM +.07%F +.02%P  
PTA +1.3PL 2.82SCS -1.6DPR 3.6%DCE  
PTA +3.15T +2.36UDC +2.04FLC 99%R 4/2018

**DE-SU 521 BOOKEM-ET**  
**66636657 TR TP TY TV TL TD**  
EX-90 GM  
**SULLY SHOTTLE MAY-TW**  
**138218285**  
EX-91 DOM

**MS DUNDEE PETRA**  
**139167171 100% RHA**  
EX-94-2E EEVVEE 6-09  
4-05 2 305 30,140 3.4 1033 2.9 882  
5-06 2 305 25,550 3.3 848 3.0 758  
3-02 2 305 24,690 3.3 816 2.8 701  
2-03 2 305 20,650 3.7 762 2.9 591  
6-08 2 229 16,760 3.6 597 3.0 511  
LIFE 1631 127,610 3.5 4444 3.0 3778  
*Only 5 Daughters Classified, they average VG-86*

**REGANCREST DUNDEE-ET**  
**127640144 TY TV TL**  
EX-95  
**MS ZACH LORENZO PAT**  
**135031539**  
EX-90-2E EEVVV 6-02  
5-08 2 365 28,890 3.9 1131 2.8 802  
4-02 2 365 26,760 3.9 1046 2.9 770  
2-11 2 365 24,370 3.9 953 2.9 718  
6-11 2 282 24,060 3.8 914 2.7 652  
1-11 2 321 20,040 3.7 743 2.8 555  
LIFE 1975 134,150 3.9 5222 2.9 3837  
*Only 3 Daughters Classified, EX-94, EX-90, VG-86*

**3rd Dam: Ms Zach M Chesapeake Patti**  
EX-92-3E  
5-03 2 342 26,460 4.1 1093 3.2 856  
LIFE 3293 226,100 3.9 8891 3.1 7111  
**4th Dam: Zach-M Supreme Pansy**  
EX-90  
5-01 2 365 26,350 4.5 1176 3.7 982  
LIFE 135,890 4.4 5976 3.7 4992  
**5th Dam: Quietcove-Peg Pam-ET**  
EX-93-3E EX-MS  
LIFE 2910 190,290 3.5 6718 3.2 6027  
**6th Dam: Eric-Dew Conductor Peggy**  
EX-95-4E EX-MS  
LIFE 2475 185,600 4.1 7557 3.2 4204

# ILLINI *Golden Opportunity* SALE



**Colganados D Avianca-Red-ET EX-92**  
Maternal Sister to Dam of Lot 77



## *Colganados-F Sid Athens*

Ashley R. Rickey  
9625 Union Valley Rd.  
Black Earth, WI 53515  
608-767-4436  
ashley.rickey876@gmail.com

*Potential 9th Generation VG-EX!*  
**3138043098 100% RHA**

**Born: March 15, 2017**

**PINE-TREE SID-ET**  
**62175895 100% RHA TR TP TY TL TD**  
GTP1+1578  
PTA -371M +6F -5P 99%R 4/2018  
PTA -78NM +.07%F +.02%P  
PTA -2.2PL 2.93SCS -4.7DPR 6.7%DCE  
PTA +2.27T +1.82UDC -0.25FLC 99%R 4/2018

**COLGANADOS SHAN ALYSHA-ET-RC**  
**3012559587 100% RHA TV TL TD**  
VG-87 VVV+V 3-11  
2-00 2 303 18,580 4.8 891 3.3 607  
3-08 2 191 14,270 4.4 633 3.2 454

*Full Sister to:*  
**Colganados D Avianca-Red-ET EX-92 (pictured)**  
*6th 4-Yr-Old Int'l R&W Show 2017*  
*8th Jr. 2-Yr-Old Int'l R&W Show 2015*  
*Res. All-American R&W Summer Yrlg 2014*

**REGANCREST-MR DRHAM SAM-ET**  
**207184639 TR TV TL**  
GM  
**PINE-TREE FINLEY MINNIE-ET**  
**61733050**  
EX-90 DOM

**LADYS-MANOR MAN-O-SHAN-ET**  
**70528492**  
EX-90  
**KHW REGMNT APPLE A1-RED-ETN**  
**70244495 CV TL TD**  
VG-87 VEVVV 2-09  
2-04 2 314 20,130 4.8 975 3.7 737

**3rd Dam: Kamps-Hollow Altitude-ET-RC**  
EX-95-2E DOM  
7-00 2 365 39,690 4.7 1849 3.3 1310  
LIFE 1844 144,460 4.4 6295 3.5 5015  
**4th Dam: Clover-Mist Alisha-ET-RC**  
EX-93-3E GMD DOM  
8-07 2 365 36,920 4.2 1553 3.2 1188  
LIFE 2999 226,470 4.7 10,659 3.4 7720  
**5th Dam: Clover-Mist Augy Star-ET \*RC**  
EX-94-4E DOM  
7-10 3 365 43,140 5.0 2136 3.3 1421  
LIFE 2486 206,250 4.7 9793 3.5 7187  
**6th Dam: D-R-A August**  
EX-96-4E DOM  
8-05 3 365 27,460 4.3 1187 3.2 871  
LIFE 3443 190,200 4.4 8281 3.3 4457  
*Nominated All-American Aged Cow 1986*  
*All-Wisconsin Aged Cow 1987*  
**7th Dam: D-R-A Ideal Precious Leader**  
EX-90-2E  
7-06 2 358 20,090 3.9 787 3.2 637  
LIFE 2456 133,250 4.0 5308  
**8th Dam: D-R-A Princess Lad Leader**  
EX-90-3E  
9-05 2 305 19,160 4.2 809





*Holstein Association USA Terms & Conditions for Public Sales*

**TERMS:** The terms of the sale are cash unless arrangements are made prior to the sale or are printed in the sale catalog. Only when the above conditions are met will the buyer be entitled to the warranties listed

below. In no case will animals be released unless settlement is made with the clerk of the sale.

**RESPONSIBILITY:** The seller, buyer, and manager of this sale are obligated to comply with the provisions of these terms and conditions.

**EXPORT SALES:** Buyer assumes all responsibility for health tests required by the importing country.

**BIDS:** The highest bidder is the buyer. Bidding parties or their agents are responsible for all bids placed. Every animal or lot presented for bidding is pledged to absolute sale. In case of dispute, the animal or lot will again be put up for advance bids, and if there is no advance bid, the animal or lot will be sold to the person the auctioneer accepted the last bid from. In case two or more claim the bid, the auctioneer will indicate the party whose bid he recognized. Other claimants will be given an opportunity to increase the bid and bidding will be restricted to the two or more claimants.

**BY-BIDDING:** Bidding directly or indirectly by the sole owner of any animal or lot is prohibited unless the intention to bid is disclosed specific to each animal in the catalog and announced when the animal enters the ring. Bidding by any member of a partnership, syndicate, or other entity having an ownership interest in an animal or lot is permitted.

**TRANSFER OF OWNERSHIP:** For all Registered Holsteins, the transfer of ownership to the buyer will be recorded on the records of Holstein Association USA and a certificate of registration showing that transfer of ownership will be provided to the buyer free of charge. For embryos, the transfer of ownership to the buyer will be recorded on the records of Holstein Association USA free of charge to the buyer.

**RISK:** All animals located at sale site are at the purchaser's risk as soon as struck off, but will be cared for free of charge for a maximum of 24 hours following the end of the sale.

**WARRANTIES:**

- 1) Each consignor warrants clear title to the animal or lot, and the right to sell same.
- 2) To the best of the seller's knowledge, each animal is sound and healthy in every respect and embryos have been recovered, processed, frozen, transferred and graded in keeping with IETS recommendations unless otherwise noted in the catalog or announced from the auction stand. Every precaution will be taken to represent the physical condition of each lot exactly as is known. Examination of all purchases should be made immediately after the purchase and before the close of the sale, and if found not to be as represented, complaint must be reported to the sale management before the close of the sale. In the event no complaint is filed, it is understood that the buyer assumes full ownership in the case of animals at sale site together with all risks, after which no representations of the seller can be challenged through the sale management. Heifers that never calved are in no way guaranteed as to the condition of their udders following calving.
- 3) **Breeding Warranty**

The seller guarantees all animals to be breeders, but not beyond the purchase price, with the following understanding:

- a. Females - All females are guaranteed to be breeders with the exception of:

1. Cows over 7 years of age when sold;
2. Cows and/or heifers carrying a pregnancy that is the result of an embryo transfer.

Report of a non-breeder must occur in writing within 3 months of the date of sale or before the animal reaches 21 months of age and must be submitted to the seller. The report must include the animal's examination record, a written statement of treatment, and a statement of the animals' inability to breed, by a licensed veterinarian. The seller has the option to refund the purchase price or make other settlement that is satisfactory to the buyer. In either case the rights of ownership of the animal return to the seller.

Females bred when sold and pronounced in calf are presumed to be pregnant but pregnancy is not guaranteed unless so announced. The seller makes no warranty that pregnant cows will deliver calves or that they will carry calves full term.

- b. If, after the sale, embryos or oocytes are recovered from a female or an attempt is made to superovulate her, this negates the breeding warranty unless there is a separate written agreement between buyer and seller.

**SHIPPING:** Assistance will be given in arranging shipping of the animals after the sale. All costs, risks and responsibility will be borne by the purchaser.

**PEDIGREE INFORMATION:** All production, classification, type and production summaries are current. Only information recorded on Holstein Association USA pedigrees is used. Any production or classification records supplied by the seller or consignor will be properly identified as provided by owner. Records in progress are identified as such.

**GENOMIC INFORMATION:** If genomic information on the animal or embryo is available, it must be dated and disclosed at or before the time of sale.

**EMBRYO TRANSFER:** All registered animals that have resulted from embryo transfer are identified with one of the following suffixes in the name: ET, ETS (from split embryo), or ETN (from nuclear transfer). If unregistered, the appropriate technology will be identified. Donor dams are identified.

**HEALTH WARRANTY:** The seller will provide an official health certificate to the buyer for each animal showing the results of all health tests made in preparation for this sale as required by the state where the cattle reside. Other health tests completed for this sale will be disclosed.

**ERRORS:** The material in this catalog has been carefully edited. If any errors or omissions are discovered, they will be announced. Such announcements take precedence over that printed in this catalog.

**ACCIDENT:** The sale management, the consignors, and the owner of the grounds will not be responsible in any case for the condition of the grounds or the behavior of the animals and disclaim any liability in the event of personal accident or property loss.

**LIMITATIONS OF WARRANTIES:** Warranties contained herein, unless terminated earlier, will cease upon the resale of an animal.

---

**STANDARD TERMS FOR PICKS OF FLUSHES**

25% down, balance due at the time of selection at 4-5 months of age based on the youngest calf born. Blood typing to be done by the seller prior to selection. Seller to be entitled to \$3/day board for every day exceeding 4-5 months of age. In the event the desired sex is not obtained from the offering, the following steps will be taken to fulfill the purchase agreement.

1. The seller shall offer choice of another flush already implanted or a future flush by mutually agreeable sire. No interest will be charged and terms will remain the same.
-

# WESEMANN FEEDS

**We at Wesemann's only produce feeds with the highest quality of ingredients, at a great price!**



## **Dairy Options**

**Custom mixes**

**Protein mixes**

**Young Stock Mixes**

**Robot Pellets**

**Dairy Top Dress**

**Calf Starters**

**Custom Show Feeds**

**Medicated/Un-Med. Pellets**



**Housing for calves Calf-Tel products**



# Why do Breeders Choose SUNSHINE GENETICS for IVF?

## **MORE** **HEALTHY CALVES** are born

The Trans Ova Genetics research program continues to produce a better embryo.

## **CONTINUOUS** **COORDINATION** & **COMMUNICATION**

With our Clients, the Trans Ova Genetics lab, semen suppliers, oocyte collection team and transfer veterinarians – **OUR SUPPORT STAFF** – **SECOND TO NONE.**

## **DONOR NUTRITION** **CARE & COMFORT**

Greater oocyte quality.

## **EXPERIENCED** **VETERINARIANS**

Involved from oocyte production to freezing Direct Transfer embryos for export – we can customize IVF to fit your genetic program.

## Perhaps it's the results!

**The Best Performance...**  
**for your donors**

**The Best Price...**  
**for your budget**

**The Best Personnel...**  
**to serve you**





# ILLINI *Golden Opportunity* SALE

## *Consignor Index*

Apple Partners, LLC.....	4	King, Johnathan.....	3
Bauman, Ken.....	62	Koester Dairy, Inc.....	25
Bauman, Renee.....	60	Lamb, Jonathan.....	30
Bovine Genomic Partners.....	19,20,21,22,23,24	Lamb, Jonathan & Alicia.....	12
Bressner, Dennis.....	69	Maddox, Stephen & Patrick.....	27
Carter, Tyler.....	41	Mil-R-Mor.....	26
Cleland, Jim & Vicky.....	28	Mitchell Dairy & Grain, LLC.....	54
Colganados Genetics.....	10	Oertel Farms, Inc.....	15,52
Courtney, Scott.....	35	PEAK Genetics.....	16,17
Dorn, J.T.....	38	Raber, Addison & Jacob.....	55
Engel, Matt.....	1	Racha, Scott.....	76
Erbsen, Connor, Nevin & Delana.....	33	Reed, Dylan.....	29,47
Gahm, Daryld.....	5,6,7,8	Rickey, Ashley.....	77
GenoSource.....	72,73	Schneider, Kyle.....	48,49
Gingerich, Schmocker & Powell.....	64	Shanks, Philip.....	70
Golden Oaks Farm.....	2,11,18,40,61	Sloan, Lila.....	50
Griffin, Curtis, Evelyn & Agnes.....	71	Sugar Creek Dairy.....	37
Heinsohn, Johnathan.....	51	Wendling, Gage.....	44,45
Heinsohn & Krull.....	74,75	Wendling, Macy.....	46
Hentrich, Jill.....	43	Wiker, J. Thomas.....	65
Holbric Holsteins.....	9,9½,56,57	Wiker, Megan.....	39
Irwin, Dawn.....	36,36½	Woker, Brennan.....	66,67,68
Irwin, Justin.....	34	Zehr & Schmocker.....	53
Janssen Cattle Co.....	32	Ziamba, Tim & Leah.....	31
Janssen & Wesemann.....	13	Ziems Farms & Ziamba.....	58,59
Keim, Dr. Chris.....	14	Zimmerman, Kaycia, Allyson & Luke.....	42,63

*Notes*

7H09264 Lirr Drew **DEMPSEY** (EX-93)

# Dempsey

Showcase  
SELECTIONS

# DOMINATION



Photos (l-r): TK-Plain-View Ripley (EX-95-EX-MS), HM grand champion, World Dairy Expo and reserve grand champion, RAWF, 2017, Milk Source LLC, Kaukauna, WI; Co-Vale Dempsey Dina 4270-ET (EX-94-EX-MS), reserve grand champion, World Dairy Expo and grand champion RAWF, 2017, Milk Source LLC & Ransom Rail Farms Inc., Kaukauna, WI. Both photos by Fletcher.

™Showcase Selections is a trademark of Select Sires Inc. **DEMPSEY** qualifies for semen export to Canada.

Let **DEMPSEY** help you dominate the winner's circle, call your Select Sires representative and place your order today!

PRAIRIE STATE SELECT SIRES

SELECT SIRES



**YOUR SUCCESS** *Our Passion.*

Phone: (847) 464-5281 ♦ [www.prairiestateselectsires.com](http://www.prairiestateselectsires.com)



