
Allegany-Steuben

– Holstein Club Spring Sale –

“The Oldest Continuous Club Sale in the Nation”



Canisteo, New York
Friday, April 28th, 2017 • 7:30 p.m.

"The Oldest Continuous Club Sale in the Nation"
Allegheny-Steuben
-- Holstein Club Spring Sale --

Friday, April 28th, 2017 • 7:30 p.m.

Canistota, New York

Sale to be held at the Allegheny-Steuben Holstein Club Barn, 6 miles south of Canistota on Rt. 36,
20 miles north of the PA/NY line.

GPS Address: 4310 State Rt. 36, Canistota, NY 14823

Sale Staff

Harold Fraley..... 570-546-6907
Adam Fraley 570-546-6907
Lavern Warriner 607-426-0521
Tom Harkenrider 607-279-3160
Billy Neal..... 607-425-0394
Martin Demun..... 607-590-0463
Jerry Smith..... 607-356-3467
Elwin Stebbins..... 607-324-5162
Mike McCaffrey..... 315-447-4699

Terms of Sale

**Cash or good check sale day! If you are buying through a member of the sale staff or someone else,
immediate payment is expected by overnight mail.**

**** All cattle are ready for immediate interstate shipment and are inoculated for shipping fever ****

Celebrating over 100 years of hosting & sponsoring Club Sales, the Allegheny-Steuben Sale series has been a continuous source of outstanding Registered Holsteins! This spring's sale will offer that same great quality in addition to a few select Protein Breed offerings! Numerous success stories exist of breeders purchasing cattle in our sales that went on to score well, show well, produce well, and serve as the foundation for profitable cow families.

We look forward to seeing you on April 28th!

The Allegheny-Steuben Holstein Club

- Semen Sale -

Select Sire Power - Andy Van Skiver

5 units of-7H12921-Vieuxsaule Wilson-ET
(Doorman x Atwood Caraibe VG-87, 2y)

5 units of-7H12922-Car-J Brokesa Delight
(Defiant x Atwood Brokasa EX-91)

5 units of-7H12600-Bacon-Hill Pety Modesty-ET
(Mogul Pety x Suprs Modesty VG-85 DOM, 2y)

5 units of-7H12843-Mr Eskdale Archangel-Red-ET
(Desired x Destry Angel VG-88 EXMS)

Genex Co-Op - Tim Mullen

10 units of 1HO11863-Co-Op Renegade-ET
(McCutchen x Atwood Rosette VG-86)

Semex - Dean Sharp

10 units of-200H010592 Stantons Expander-ET
(High Octane x Uno Enya VG-86, 2y)

Accelerated Genetics - Bill Van Skiver

10 units of14HO6809 – Canyon-Breeze At Airlift-ET
(Atwood x Shottle Auburn EX-90 DOM)

The Allegany-Steuben Junior Holstein club would like to thank everyone who donated! We would like to thank everyone who purchased semen tonight as well. Without everyone's continued support our Junior club would not be here today.

**Semen Sale Chairman,
Ethan Williamson**



St-Yle-Sa JumpnJoy-Red-ET
(2E-94 EEEEE)
 Dam of Lot 1



Scenic-Edge Joyful-Red-ET
(2E-92 EEEEE)
 2nd Dam of Lot 1

1

Roll-N-View Jump4Jo-Red-ET

Born 3/6/2015 Reg. 840 3124680364 100%RHA

- Fresh 3-1-17
- She looks Fantastic! Great show prospect for Jr. 2-Yr-Old Class!

B&M Winnie & C&A Galton
 6079 Manchester Rd.
 Poplar Grove, IL 61065
 815/737-8657

ST-JACOB DESTRY HEZTRY-ET
70074442 RC TV TL TTY TD

EX-91 EEEV 4-07 GTPI +1932
 PTA -418M -7F +3P 98%R 4/2017
 PTA +92NM +.03%F +.06%P 75%US
 PTA +1.2PL 3.00SCS +1.8DPR 6.8%DCE
 PTA +1.88T +1.75UDC +1.76FLC 99%R 4/2017

ST-YLE-SA JUMP4JOY-RED-ET
139758889 TL TD

EX-94 EEEEE 2E 6-01
 5-07 3 359 44260 4.4 1926 3.3 1450
 05-07 3 305 40900 4.4 1811 3.3 1346
 7-01 3 305 26580 4.7 1256 3.3 884
 3-00 2 305 21340 4.5 956 3.6 759
 4-00 2 305 19810 4.7 934 3.4 677
 LIFE 1358 115420 4.5 5230 3.4 3900
Jr. All-American R&W 4-Yr-Old 2013
Reserve Jr. All-American 5-Yr-Old 2014
1st Aged Cow, Senior & Grand Champion at NY
State Fair R&W Show 2016

SCIENTIFIC DESTRY-ET 138122625
RC TV TL TY

EX-92 EEEV 8-05 GTPI +1963
DUBEAU DUNDEE HEZBOLLAH
104117050C
 EX-92 EEEEE 4-05
 4-03 2 365 42046 4.4 1859 3.3 1379
Res. All-American 4-Year-Old 2011
2nd 4-Year-Old World Dairy Expo 2011

KHW KITE ADVENT-RED-ET 133002953
TV TL TD

EX-94 EEEE 5-00 GTPI +1586
SCENIC-EDGE JOYFUL-RED-ET
62723191
 EX-92 EEEEE 2E 6-00
 5-07 2 305 28970 4.4 1276 3.1 905
 3-08 2 305 25960 4.7 1223 3.4 889
 2-07 2 322 24310 4.4 1074 3.0 723
 LIFE 1349 113930 4.5 5096 3.2 3626
Supreme Champion WDE Junior Show 2008
Una Jr. All-American R&W 2006, 2007, 2008 & 2009
Unanimous All-American R&W 2006 & 2008
Reserve All-American R&W 2009
3rd 5-Year-Old World Dairy Expo R&W 2011

3rd Dam: Howard-Home Rmk Jena-Red-ET
 (VG-86, 2y)
 2-03 3 365 27300 4.3 1372 3.1 837
4th Dam: Howard-Home Promotion Joy-Red
 (EX-90 EVEE)
 4-08 2 316 25010 3.9 981 2.8 702
5th Dam: Howard-Home Caveman Joy-Red
 (VG-87)
 6-06 305 23370 3.8 985
 LIFE: 160620 3.9 6233
6th Dam: Howard-Home Jester Jamie
 (VG-85)
 3-08 305 21290 3.1 661



Luck-E Damion Tassel (2E-94 EX-MS)
 Dam of Lot 2

2

Oakfield Brady Temple-ET

Born 3/2/2016 Reg. 840 3134444557 100%RHA

• Potential 6th Generation Excellent!!

*Jonathan & Alicia Lamb
 Oakfield Corners Dairy
 6880 Albion Rd
 Oakfield, NY 14125
 585/704-2501*

BUTZ-BUTLER ATWOOD BRADY-ET
140610404 TV TL TY TD TC

EX-93 EEE+ 4-05 50K GTPI +1596
 PTA -176M -23F -25P 97%R 4/2017
 PTA -218NM -.06%F -.08%P 63%US
 PTA -1.9PL 2.78SCS -3.3DPR 7.8%DCE
 PTA +3.21T +2.98UDC +2.21FLC 95%R 4/2017

MAPLE-DOWNS-I G W ATWOOD-ET
8956379C TR TV TL TY TD

EX-90 EE+V 4-06 GTPI +1897
 PTA +3.44T +2.43UDC +2.63FLC 99%R 4/2017
REGANCREST BRASILIA-ET 62496866
 EX-92 EEEVE 2E GMD DOM 6-05 6*
 5-03 2 365 33481 3.9 1305 2.8 925
 2-03 3 365 33180 3.6 1186 3.0 989

• Sold as a package with sons & daughters for
 \$1.5 million in the 2009 Parade of Perfection Sale

LUCK-E DAMION TASSEL 62637135
 EX-94 EEEVE 2E 7-06

3-10 2 365 31980 4.7 1492 3.2 1037
 7-08 3 365 29610 3.9 1148 3.2 933
 6-08 2 309 27220 4.3 1182 3.4 939
 2-05 2 365 27000 4.2 1135 3.5 936
 LIFE 127668 4.2 5370 3.5 4427

Many EX & VG daughters!

ERBACRES DAMION 130263722
TR TV TL TY TD

EX-96 EEEE 11-01 GTPI +1468
 PTA +2.08T +1.13UDC +2.26FLC 99%R 4/2017
LUCK-E APPROVAL TAMMY 135408157
 EX-93 EEEVE 2E 6-01
 3-05 2 365 30660 4.5 1385 3.2 978
 5-00 2 365 39330 3.2 1257 2.9 1135
 2-02 2 365 22450 4.4 986 3.1 687
 LIFE 1517 122920 4.2 5120 3.2 3916

3rd Dam: Leepaul Rudolph Tassel
 (2E-91)
 4-09 2 354 34860 4.8 1656 3.3 1152
 LIFE 2090 172,830 4.7 8133 3.2 5522
4th Dam: Leepaul Astre Tassel *RC
 (3E-93)
 5-06 2 365 31390 4.5 1427 3.1 978
5th Dam: Leepaul A J Tickle-Red
 (3E-90)
 6-02 2 305 24475 4.3 1063 3.2 787
 LIFE 157662 4.4 6927 3.4 5291



Penn-Gate Storm Fleurel-ET
(2E-94 EEEEE DOM)
 Dam of Lot 3



Penn-Gate Skychief Finesse
(3E-95 EEEEE DOM)
 2nd Dam of Lot 3

3

Oakfield-Bro BE Fairmont-ET

Born 9/7/2016 Reg. 840 3134444775 99%RHA

- Backed by 4 direct EX-95 or EX-94 pt dams!
- Potential 5th Generation Excellent!!

Matthew & Jonathan Lamb
 3650 Batavia Oakfield Townline
 Oakfield, NY 14125
 585/704-2501

POL BUTTE MC BEEMER-ET **7525863C TV TL TY TD**

GTPI +2204
 PTA +839M +42F +24P 80%R 4/2017
 PTA +284NM +.04%F +.00%P 100%US
 PTA +3.65T +2.95UDC +2.78FLC 79%R 4/2017

PENN-GATE STORM FLEUREL-ET **133933714**

EX-94 EEEEE 2E DOM 6-04
 6-00 2 365 36770 3.4 1265 3.0 1090
 3-10 2 365 29710 3.7 1087 3.0 898
 2-03 2 305 21730 4.5 985 3.0 660
 LIFE 1220 101530 3.8 3882 3.0 3080

DE-SU BKM MCCUTCHEN 1174-ET **69990138 99%RHA TV TL TY TD**

EX-93 EEEE 4-10 GM GTPI +2464
BUTZ-BUTLER GOLD BANNER-ET
140145517
 VG-88-2Y CAN 1*
 2-06 2 365 33417 4.2 1409 3.1 1049

MAUGHLIN STORM-ET 5457798C **B/R TV TL**

CAN EX GM GTPI +1440
PENN-GATE SKYCHIEF FINESSE
15790548

EX-95 EEEEE 3E DOM 9-02
 9-02 2 365 36760 3.8 1386 3.2 1158
 4-09 2 365 31290 4.9 1538 3.2 1014
 3-09 2 352 30500 4.3 1336 3.6 1119
 8-00 2 337 25470 5.6 1407 3.2 839
 LIFE 2245 161510 4.5 7311 3.5 5590
 Res. Grand Champion PA Fall Show '00
 • 21 Excellent Daughters
 • 6 Excellent Sisters (2 @ EX-94)

Maternal Sister to Skychief Finesse:

~Penn-Gate Highlite Fame-ET
 (EX-94 EEEEE)
 4-09 2 365 30460 4.5 1345 3.2 968
 3-07 2 361 31090 3.8 1179 3.4 1049

Full Sister to Skychief Finesse:

~Penn-Gate Skychief Fifi-ET (2E-94)
 5-03 2 365 42850 4.2 1819 3.3 1409
 Highest producing cow ever @ Penn-Gate

3rd Dam: Penn-Gate Starbuck Finesse

(2E-94 EEEEE GMD DOM)
 8-02 2 305 30040 3.8 1133 3.4 1010
 LIFE 2220 166730 3.7 6252 3.5 5902
 Mem. of Nom. All-American Best 3 Females '90
 ~7 EX & 6 VG Daughters

4th Dam: Penn-Gate Elevation Flashie

(5E-94 EX-MS GMD DOM)
 7-01 2 365 32410 4.3 1382 3.2 1025
 LIFE 3872 260540 4.4 11435 3.3 7091
 2nd Eastern Nat'l Produce of Dam '94



Cookiecutter Ssire Has-ET
(VG-87 EX-MS DOM, 2y)
Dam of Lot 4



Cookiecutter MOM Halo-ET
(VG-88 EX-MS DOM, 2y)
2nd Dam of Lot 4 & 3rd Dam of Lot 5

4

AOT Charismatic Haze-ET

Born 10/21/2016 Reg. 840 3141134937 100%RHA
13K GTPI +2481
PTA +136M +84F +26P 75%R 4/2017
PTA +725NM +.29%F +.08%P
PTA +6.9PL 2.90SCS +1.7DPR 5.4%DCE
PTA +1.52T +1.91UDC +1.25FLC 73%R 4/2017
PTA +155FE +2.2FI 7.4%SCE

• **Potential 10th Generation Excellent Mammary System!**

AOT Genetics
c/o Thomas Kugler
28 Coons Rd
Valley Falls, NY 12185
518/366-3901

SEAGULL-BAY CHARISMATIC-ET
840 3124720331 99%RHA TR TV TL TY TD
140K GTPI +2516
PTA +935M +83F +29P 78%R 4/2017
PTA +764NM +.18%F +.00%P 100%R
PTA +8.0PL 2.81SCS +1.1DPR 4.8%DCE
PTA +1.52T +1.63UDC +1.75FLC 76%R 4/2017
PTA +141FE +1.7FI 8.4%SCE

COOKIECUTTER SSIRE HAS-ET
840 3012489198
VG-87 VE+GE DOM 2-10 GTPI +2530
PTA +1119M +93F +50P 81%R 4/2017
PTA +703NM +.18%F +.06%P
PTA +3.7PL 2.91SCS +4DPR 4.8%DCE
PTA +2.13T +1.68UDC +.56FLC 82%R 4/2017
2-01 3 365 37410 4.4 1646 3.2 1197
• **Multiple sons in A.I. - Many over +2700 GTPI!**
• **9th Generation Excellent Mammary System!**

STANTONS CATALYST-ET 10735541C TV
TL TY TD
50K GTPI +2206
EDG RUBY MOGUL ROSE-ET 72127371
77K GTPI +2405

SEAGULL-BAY SUPERSIRE-ET 69981349
TV TL TY TD
VG-88 EVVV 4-09 GM GTPI +2603 (4/17)
COOKIECUTTER MOM HALO-ET
840 3007069733
VG-88 VV+VE DOM 2-09 50K GTPI +2245
PTA +195M +42F +28P 93%R 4/2017
PTA +2.63T +2.42UDC +1.07FLC 94%R 4/2017
2-00 3 365 35410 5.2 1832 3.5 1241
• **Halo is the Dam of many high GTPI daughters & sons**
• **8th Generation Excellent Mammary System!**
• **Full Sister to Cookiecutter MOM Hue (VG-88, 2y CAN)**

3rd Dam: Cookiecutter Gld Holler-ET
(VG-88 VVV+E DOM, 2y)
2-03 3 365 40730 3.5 1410 3.1 1249
• 7 Maternal descendants sold in the 2016 National Convention Sale, avg. over \$50,000!
4th Dam: MS Kngs-Rnsm Champ Haley-ET
(EX-90 EX-MS GMD DOM)
3-11 3 365 43690 3.7 1625 3.1 1357
5th Dam: Regancrest-JDV Hanna-ET
(EX-90 EEVVE)
4-07 3 365 45110 4.3 1922 3.2 1449
6th Dam: Long-Haven Rudolph Dee-ET
(2E-90 EVVVE GMD DOM)
2-11 2 365 32720 4.8 1565 3.8 1252
LIFE 2306 166900 4.3 7099 3.5 5884
7th Dam: Regancrest Elton Disrael-ET
(VG-88 EX-MS DOM)
2-04 2 365 33617 4.5 1499 3.5 1169
Full Brother to Disrael:
Regancrest Elton Durham-ET (EX-90 GM)
8th Dam: Snow-N Denises Dellia
(2E-95 EX-MS GMD DOM 2*)
7-06 2 365 35610 4.0 1431 2.9 1035
LIFE 2558 180240 3.9 7108 3.2 5723
32 EX & 49 VG offspring
9th Dam: Snow-N Dorys Denise
(2E-90 EX-MS GMD DOM)
5-09 2 365 33350 3.8 1256 3.1 1038
LIFE 1604 114010 3.6 4153 3.2 3649



Cookiecutter Day Haley-ET
 (VG-87 VG-MS 2y)
 2nd Dam of Lot 5



Cookiecutter MOM Halo-ET
 (VG-88 EX-MS DOM, 2y)
 2nd Dam of Lot 4 & 3rd Dam of Lot 5

5

AOT Flagship Hailedon-ET

Born 1/4/2017 Reg. 840 3141134956 99%RHA
 30K GTPI +2640
 PTA +1747M +78F +54P 74%R 4/2017
 PTA +734NM +.04%F +.00%P
 PTA +6.6PL 2.93SCS +.5DPR 5.4%DCE
 PTA +2.92T +2.16UDC +1.71FLC 72%R 4/2017
 PTA +160FE +1.1FI 7.1%SCE

AOT Genetics
 c/o Thomas Kugler
 28 Coons Rd
 Valley Falls, NY 12185
 518/366-3901

S-S-I 1STCLASS FLAGSHIP-ET

840 3127943686 99%RHA TR TP TC TV TL TY TD
 77K GTPI +2715
 PTA +1134M +75F +46P 79%R 4/2017
 PTA +819NM +.12%F +.05%P 100%US
 PTA +8.4PL 2.73SCS +2.1DPR 4.8%DCE
 PTA +2.41T +1.96UDC +2.22FLC 77%R 4/2017
 PTA +151FE +2.7FI 6.0%SCE

COOKIECUTTER SS HAILMARY-ET

840 3126700343 TV TL TY TD
 140K GTPI +2541
 PTA +1673M +63F +49P 78%R 4/2017
 PTA +654NM +.00%F -.01%P
 PTA +5.5PL 2.79SCS +2.0DPR 4.6%DCE
 PTA +2.13T +1.59UDC +1.17FLC 75%R 4/2017
 PTA +134FE +2.1FI 7.2%SCE

ZAHBULLS ALTA1STCLASS-ET

71441918 TR TP TC TV TL TY TD
 77K GTPI +2372
 PTA +2.73T +3.21UDC +1.66FLC 84%R 4/2017

S-S-I SUPRSIRE MIRI 8679-ET

840 3011538078 99%RHA TR TP TL TD
 VG-88 VVVVE DOM 3-03
 2-00 3 365 39810 3.5 1402 3.1 1234

COGENT SUPERSHOT 755898903NLD

TV TL TY TD
 GTPI +2532

COOKIECUTTER DAY HALEY-ET

840 3011584606
 VG-87 VE+VV 2-10 GTPI +2437
 PTA +1353M +61F +43P 80%R 4/2016
 PTA +529NM +.04%F +.01%P
 PTA +1.9PL 2.78SCS +.4DPR 6.0%DCE
 PTA +2.79T +2.37UDC +1.42FLC 82%R 4/2016
 2-00 3 365 33510 3.9 1307 3.2 1068

• *Terrific udder and is a potential EX with another calving and should have a 9th generation EX-MS!!*

3rd Dam: Cookiecutter Mom Halo-ET

(VG-88 EX-MS DOM, 2y)
 2-00 3 365 35410 5.2 1832 3.5 1241
 • 8th Generation Excellent Mammary System!

4th Dam: Cookiecutter Gld Holler-ET

(VG-88 VVV+E DOM, 2y)
 2-03 3 365 40730 3.5 1410 3.1 1249
 • 7 Maternal descendants sold in the 2016 National Convention Sale, avg. over \$50,000!

5th Dam: MS Kngs-Rnsm Champ Haley-ET

(EX-90 EX-MS GMD DOM)
 3-11 3 365 43690 3.7 1625 3.1 1357

6th Dam: Regancrest-JDV Hanna-ET

(EX-90 EEVVE)
 4-07 3 365 45110 4.3 1922 3.2 1449

7th Dam: Long-Haven Rudolph Dee-ET

(2E-90 EVVEE GMD DOM)
 2-11 2 365 32720 4.8 1565 3.8 1252
 LIFE 2306 166900 4.3 7099 3.5 5884

8th Dam: Regancrest Elton Disrael-ET

(VG-88 EX-MS DOM)
 2-04 2 365 33617 4.5 1499 3.5 1169

9th Dam: Snow-N Denises Dellia

(2E-95 EX-MS GMD DOM 2*)
 LIFE 2558 180240 3.9 7108 3.2 5723

10th Dam: Snow-N Dorys Denise

(2E-90 EX-MS GMD DOM)
 5-09 2 365 33350 3.8 1256 3.1 1038



Kingemerling O-Sty Favor-ET (VG-86 VG-MS, 2y)
2nd Dam of Lot 6

6

Midas-Touch Forgiveness-ET

Born 5/10/2016 Reg. 840 3136887512 100%RHA

*Midas Touch Genetics
69 Halfway House Rd.
Waddington, NY 13694
315-322-4162*

BACON-HILL PETY MODESTY-ET

840 3013654627 TY

77K GTPI +2802

PTA +1909M +97F +64P 79%R 4/2017

PTA +977NM +.09%F +.03%P 100%US

PTA +7.7PL 3.03SCS +1.8DPR 3.2%DCE

PTA +2.20T +2.21UDC +1.67FLC 78%R 4/2017

PTA +221FE +1.9FI 6.2%SCE

KINGEMERLING HLOGN FRUIT-ET

71875787

VG-86 VV+VV 2-02 9K GTPI +2273

PTA +749M +19F +21P 80%R 4/2017

PTA +452NM -.03%F -.01%P

PTA +5.6PL 2.68SCS +2.8DPR 5.7%DCE

PTA +1.73T +1.60UDC +.94FLC 80%R 4/2017

2-00 2 299 24390 3.8 919 3.2 785

SIEMERS MOGUL PETY 840 3010660326

TV TL TY TD

VG-88 EVVV 3-00 GTPI +2457

BACON-HIL SUPRS MODESTY-ET

840 3010945893

VG-85 +V+VV DOM 2-06 GTPI +2476

COOKIECUTTER PETRON HALOGEN

840 3008710387 TV TL TY TD

50K GTPI +2132

PTA +1.65T +2.37UDC +.73FLC 98%R 4/2017

KINGEMERLING O-STY FAVOR-ET

70041158

VG-86 VVV+V 2-08 GTPI +2240

PTA +1773M +43F +40P 83%R 4/2017

PTA +1.32T +.93UDC +1.08FLC 79%R 4/2017

3-00 3 327 36410 3.9 1437 3.1 1139

2-01 3 271 26320 3.7 970 3.2 842

4-00 3 181 17100 4.7 809 3.2 542 (Inc)

3rd Dam: King-Emer Planet Faithy-ET

(VG-85)

3-05 3 301 29590 3.9 1158 3.4 996

4th Dam: Honeycrest Shottle Faith-ET

(EX-91 EEVVE DOM)

2-06 365 38220 4.4 1680 3.1 1179

- Multiple AI sons

5th Dam: Honeycrest Flower Girl-ET

(VG-85 +V+V+ GMD)

2-01 365 39910 3.7 1483 2.7 1067

6th Dam: Honeycrest Maryj Twilite-ET

(VG-86 GMD)

1-11 365 32200 4.0 1287 3.3 1069

7th Dam: Honeycrest Aerostar Mary-ET

(2E-90 GMD-DOM)

5-05 365 47470 3.7 1766 2.9 1396

LIFE 150600 3.7 5626 3.2 4819

- 16 sons in AI *Embryos exported

- 3 full sisters all VG or EX & over 40000M

8th Dam: Honeycrest Blkstar Kathryn

(EX-90 GMD-DOM)

3-06 365 28740 3.7 1074 3.4 976

9th Dam: Honeycrest Mars Kathleen

(VG-88 DOM)

4-06 365 27460 3.7 1004 3.4 925

10th Dam: Honeycrest Bell Kathleen (EX-90)

8-02 364 30070 3.7 1119 3.2 953



Ms Apples Affection-ET (2E-90)
 Dam of Lot 7 & 2nd Dam of Lot 7A



KHW Regiment Apple-Red-ET
 (3E-96 EEEEE DOM)
 2nd Dam of Lot 7 & 3rd Dam of Lot 7A

7 Arethusa LD Annalisa-Red-ET

Born 3/25/2014 Reg. 840 3123885900 100% RHA *PO *TL *TD

Philip J. Bachman
 439 Pushersiding Rd
 Ulysses, PA 16948
 814/848-7262

GP-81 +G+++ 2-06 12K GTPI +1801
 PTA +1.37T +.94UDC +1.82FLC 81%R 4/2017
 • Fresh 3-2-17

TIGER-LILY LADD P-RED-ET

69405976 RC TV TL TY TD
 EX-91 EEVE 4-02 GTPI +1956
 PTA -1263M -7F -7P 99%R 4/2017
 +149NM +.15%F +.12%P 34%US
 PTA +3.0PL 2.75SCS +2.4DPR 6.7%DCE
 PTA +2.13T +1.94UDC +1.04FLC 99%R 4/2017

MS APPLES AFFECTION-ET

139272453 RC
 EX-90 EEVVV 2E 7-04
 4-08 2 365 31630 4.4 1387 3.2 1022
 3-03 2 365 29190 4.7 1372 3.2 947
 2-00 2 343 22980 4.5 1045 3.1 722
 6-11 2 295 21080 4.1 864 3.3 695
 LIFE 1749 140210 4.5 6299 3.2 4548
 • Sold for \$250,000 in the Global Glamour Sale

Maternal Sister to:
 Ms D Apple Danielle-Red EX94-EX95MS
 Ms Candy Apple-Red EX94
 Ms Delicious Apple-Red EX94
 Ms Apples Applause-ET EX94 *RC
 Ms Apples Angel-ET EX94 *RC
 Ms Apples Aria EX92-EX94MS *RC
 Jr. Champion IA State Holstein Show 2011

SCIENTIFIC DESTROY-ET 138122625

RC TV TL TY
 EX-92 EEVE 8-05 GTPI +1921
TIGER-LILY LAWNBOY LULU-RED
6658065 TL
 VG-87 VV+VV 2-08
 4-07 3 305 32020 4.5 1441 3.4 1075

COMESTAR STORMATIC-ET 6947936

TV TL
 CAN EX GM GTPI +1453
KHW REGIMENT APPLE-RED-ET
135511521 CV
 EX-96 EEEEE 3E DOM 9-06
 9-01 2 365 36750 4.3 1582 3.5 1280
 LIFE 2898 240640 4.7 11394 3.7 9013
 2013 HI Red Impact Cow of the Year
 Unan. All-American R&W 125,000lb. Cow 2013
 All-American R&W Aged Cow 2011
 HI World Champion R&W Cow 2010
 Nom All-American 5-Yr-Old 2009
 HHM All-American Jr 3-Yr-Old 2007
 Unanimous All-American Jr 2-Yr-Old 2006
 All-American R&W Jr 2-Yr-Old 2006

Lot 7A

Arethusa Awesome

Amore-Red

Born 3/18/2016 Reg. 3132146745 100% RHA

SIRE: LUCK-E AWESOME-RED
72186769 CV TL TY TD
 140K GTPI +1647
 PTA -839M -4F -20P 79%R 4/2017
 PTA +3.00T +3.22UDC +1.38FLC 4/2017

DAM: SELLS AS LOT 7

3rd Dam: Kamps-Hollow Altitude-ET

(2E-95 EEEEE DOM 2*)
 7-00 2 365 39690 4.7 1849 3.5 1385
 LIFE 1844 144460 4.4 6295 3.7 5288
 • Dam of KHW Kite Advent-Red-ET (EX-94)
 • Red Impact Cow of the Year 2009
 • Wisconsin Cow of the Year 2009

4th Dam: Clover-Mist Alisha-ET

(3E-93 EEEEE GMD DOM)
 5-03 3 365 34670 4.8 1654 3.3 1154
 LIFE 2999 226470 4.7 10659 3.6 8149

5th Dam: Clover-Mist Augy Star-ET *RC

(4E-94 EEEEE DOM)
 7-10 3 365 43140 5.0 2136 3.3 1421
 LIFE 2486 206250 4.7 9793 3.5 7187

6th Dam: D-R-A August

(4E-96 EX-MS DOM)
 8-05 3 365 27460 4.3 1187 3.2 871
 LIFE 3443 190200 4.4 8281 3.3 4457
 Nom. All-American Aged Cow '86
 All-Wisconsin Aged Cow '87

7th Dam: D-R-A Ideal Precious Leader

(2E-90 EX-MS)
 7-06 2 358 20090 3.9 787 3.2 637
 LIFE 2456 133250 4.0 5308

8th Dam: D-R-A Princess Lad Leader (3E-90)

9-05 2 305 19160 4.2 809



Regancrest Chanel-ET (EX-92 EX-MS)
 Dam of Lot 8

8

Midas-Touch Byway Chanel-ET

Born 6/1/2016 Reg. 840 3136887527 100%RHA

• *Potential 8th Generation Excellent!*

Midas Touch Genetics
 69 Halfway House Rd
 Waddington, NY 13694-3166
 315/322-4162

OH-RIVER-SYN BYWAY-ET 71310557

TR TV TL TY TD

77K GTPI +2143

PTA +970M +8F +21P 80%R 4/2017

PTA +196NM -.10%F -.03%P 100%US

PTA +1.1PL 2.94SCS -1.0DPR 6.1%DCE

PTA +3.74T +3.66UDC +1.85FLC 79%R 4/2017

REGANCREST CHANEL-ET 66625236

EX-92 EEVEE 5-11 50K

4-11 2 365 30220 4.2 1261 3.3 1011

3-04 2 365 24380 4.2 1019 3.7 894

1-11 2 365 22170 4.5 997 3.5 767

Maternal sister to:

-Regancrest S Chassity-ET (EX-92 GMD DOM)

3-10 2 365 42280 4.3 1798 2.7 1150

LIFE 1071 105520 4.2 4383 3.0 3158

Global Cow of the Year 2011

Sold for \$1,500,000 in package

Dam of AI sires Gold Chip & Colt 45

SULLY HART MERIDIAN-ET 69951907

TR TY TD

GM 50K GTPI +2435

SANDY-VALLEY ATWD BARBIE-ET

69250651

EX-91 EEVEE 5-01 GTPI +1816

2-04 3 365 32120 3.5 1118 3.3 1071

4-09 3 305 25500 3.6 925 3.3 829

BRAEDALE GOLDWYN 10705608C

TY TV TL

GP-84-8Y CAN Extra GM GTPI +1871

PTA +1.76T +1.49UDC +1.43FLC 99%R 4/2017

REGANCREST CINDERELLA 61361673

EX-92 EEEEE 2E GMD DOM 6-03 7*

2-05 2 365 32300 4.4 1437 3.2 1029

5-00 2 365 34220 4.1 1418 3.1 1074

1st Mideast Fall Nat'l Sr. 2-Year-Old 2006

3rd Midwest Spring Nat'l Sr. 3-Year-Old 2007

5th Midwest Fall Nat'l 5-Year-Old 2009

3rd Dam: Regancrest-PR Barbie-ET

(EX-92 EEEEE GMD DOM 6*)

2-06 2 365 31690 3.9 1237 3.3 1050

HM All-American Jr. 3-Year-Old 2004

4th Dam: Regancrest Juror Brina-ET

(EX-92 EEVEE GMD)

4-04 2 365 40640 3.6 1478 3.0 1217

Grand Champion & BU IA Dist 1 Sh 2000

Res. Grand Champion 2000 IA State Fair

5th Dam: Regancrest Aerostar Bert-ET

(EX-90 EEVVV GMD DOM)

5-022 365 37790 3.6 1357 3.2 1215

LIFE 1305 109350 3.7 4031 3.3 3558

6th Dam: Regancrest Mark Chairman Bea

(2E-91 GMD DOM)

7-09 2 365 33630 3.8 1276 3.1 1052

LIFE 2036 140130 4.1 5711 3.3 4616

7th Dam: Regancrest Board Chairman Bea

(EX-90 EX-MS)

5-09 2 365 26010 4.1 1059 3.4 884

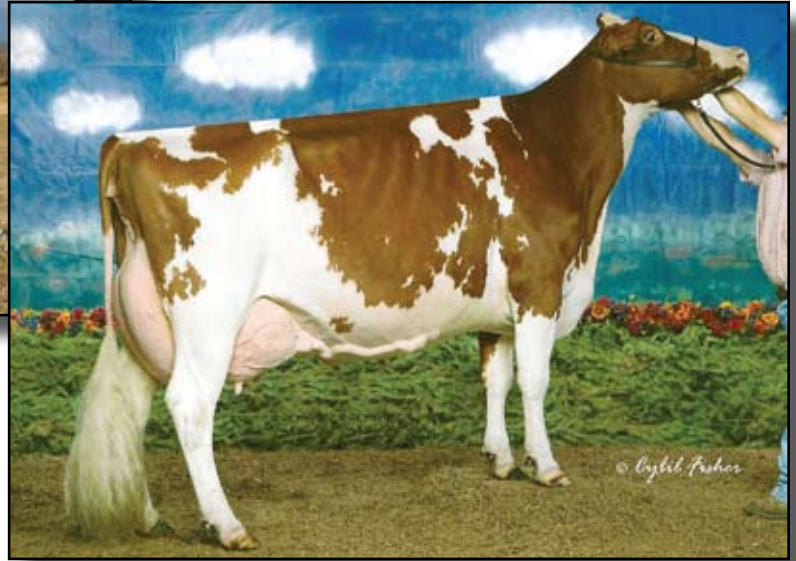
8th Dam: Regancrest Apache Standout Bea

(VG-86 EX-MS)

LIFE 2432 131940 3.6 4744



Mer-Gold Advent Ms Meg-Red
(EX-92 EEVVE)
 2nd Dam of Lot 9



Derrwyn Miss Special-Red-ET
(4E-94 EEEEE DOM)
 3rd Dam of Lot 9

9 Hinz-Bos Camelot Morgana
 Born 3/1/2017 Reg. 840 3139217936 100%RHA

Justin O. Hinz
 7923 Centerville Rd
 Fillmore, NY 14735
 585/689-0251

MR CHASSITYS CAMELOT 142160978
TL TD
 9K GTPI +1827
 PTA -45M +2F -4P 88%R 4/2017
 PTA -16NM +02%F -.01%P 100%US
 PTA -.1PL 2.88SCS -3.2DPR 6.5%DCE
 PTA +3.47T +2.54UDC +2.63FLC 78%R 4/2017

HINZ-BOS STERLING MARIAH-ET
72651692 RC

MAPLE-DOWNS-I G W ATWOOD-ET
8956379C TR TV TL TY TD
 EX-90 EE+V 4-06 GTPI +1897
 PTA +3.44T +2.43UDC +2.63FLC 99%R 4/2017
MS CHASSITY SANCHZ CAROL-ET
140538591
 EX-92 EEEEE 2E 6-10
 3-07 2 305 26900 3.8 1011 3.1 834
 2-02 2 305 19310 3.3 646 3.1 596

ARDROSS STERLING-ET 9638586C
RC TY
 Extra 50K GTPI +1746
MER-GOLD ADVENT MS MEG-RED
135918319
 EX-92 EEVVE 6-03
 6-02 2 365 36940 4.8 1788 3.1 1149
 2-00 2 365 27950 4.6 1286 3.2 886
 4-02 2 362 27330 4.4 1201 3.4 934
 LIFE 1317 105420 4.6 4862 3.3 3438

3rd Dam: Derrwyn Miss Special-Red-ET
(4E-94 EEEEE DOM)
 5-02 2 365 43260 4.2 1834 3.1 1360
 LIFE 1904 163440 4.0 6585 3.1 5087
 Res. All-American R&W Sr. 2-Year-Old 2003
 3X All-American R&W
 Holstein Internat'l Red Cow of the Year 2008
 1st Sr. 3Y & Res. Int. Champ R&W WDE 2004
 1st 5Y & Res. Grand Champ R&W WDE 2006
4th Dam: Derrwyn Factor Miata-Red
(2E-94 EEEVE)
 6-11 2 365 36900 4.2 1560 3.0 1119
 LIFE 1959 152150 4.2 6417 3.3 4991
 HM All-American R&W Aged Cow 2003
5th Dam: Derrwyn TT Mystic *RC (VG-86)
 6-02 2 365 27200 3.9 1068 2.8 749
 LIFE 2119 140260 4.0 5669 2.8 3905
6th Dam: Derrwyn Gold Mistress
(2E-91 EVEE)
 5-02 2 365 23540 3.4 793 2.9 683
7th Dam: Derrwyn Magic Missy
(VG-88 VVVV) 4Y 19680 3.3 644 2.8 558
8th Dam: Derrwyn Bootmaker Misty
(VG-85 VG-MS) LIFE 2599 134650 3.4 4609
9th Dam: Derrwyn Hagen Dawn (VG-88)
 LIFE 3397 193260 3.6 6874
10th Dam: Win-Day-Wood Hillside Ben
(2E-91 EEEV) LIFE 3025 158770 3.6 5728



Ms Atlees Shot Aleena-ET
(EX-92 EEEEE)
 Dam of Lot 10



Ms Atlees Roy Autumn-ET
(EX-90 EX-MS)
 2nd Dam of Lot 10

10 Midas-Touch DM Aleeda-ET
 Born 9/13/2016 Reg. 840 3136887564 99%RHA

Midas Touch Genetics
 69 Halfway House Rd
 Waddington, NY 13694-3166
 315/322-4162

VAL-BISSON DOORMAN 107281711C
TV TL TY TD 99% RHA
 VG-87-CAN 50K GTPI +2361
 PTA +43M +42F +26P 99%R 4/2017
 PTA +395NM +.15%F +.09%P 26%US
 PTA +2.7PL 2.56SCS -.9DPR 5.8%DCE
 PTA +3.59T +2.57UDC +2.13FLC 98%R 4/2017

DE-SU BOOKEM-ET 66636657 99%RHA
TR TV TL TY TD
 VG-88 EV+V 6-07 GM GTPI +2341
 PTA +1269M +30F +48P 99%R 4/2017
VAL-BISSON SHOTTLE IMELDA-ET
106173432C
 EX-94 EEEEE 7-02
 4-03 2 365 40505 3.8 1550 3.6 1455
 1-11 2 365 25531 4.2 1076 3.7 957

MS ATLEES SHOT ALEENA-ET
70041667
 EX-92 EEEEE 4-05
 3-00 2 300 26480 4.4 1164 3.1 824
 4-00 2 272 17800 4.4 775 3.2 568
1st Spring Calf Northeast Fall Nat'l 2011

PICSTON SHOTTLE-ET 598172GBR
TV TL TY
 EX-96-GBR GM GTPI +1937
 PTA +1.18T +.89UDC +.69FLC 99%R 4/2017
MS ATLEES ROY AUTUMN-ET 63164290
 EX-90 VEEVE 4-09 GTPI +1442
 1-09 2 365 30199 4.6 1383 3.3 988
Una All-American Milking Fall Yearling 2008
1st Milking Fall Yearling World Dairy Expo 2008
1st Milking Fall Yearling Northeast Fall Nat'l 2008
People's Choice Winner 2008
All-American Fall Heifer Calf 2007
1st Fall Heifer & Jr. Champion WDE 2007

Maternal Sister to Autumn (2nd Dam):
 -Ms Atlees Goldwyn Ariel-ET (EX-92)
 2-00 2 365 28330 4.2 1186 3.3 934
 Res. All-American Jr. 2-Year-Old 2009
 -Maternal brothers include Atwood & Aftershock

3rd Dam: MD-Delight Durham Atlee-ET
 (EX-92 EEEEE DOM)
 3-11 2 365 38290 5.5 2091 3.3 1249
 2nd NY Fat
 2-08 2 365 32520 4.3 1400 3.3 1074
 All-American Sr. 3-Year-Old 2005
 1st Sr. 3-Year-Old WDE 2005
 Res. Int. Champion WDE 2005
4th Dam: MD-Delight Strm Amberlee-ET
 (VG-88 EVEVV DOM)
 2-02 2 365 26170 3.7 969 3.2 835
5th Dam: MS Kingstead Chief Adeen-ET
 (2E-94 EEEEE DOM)
 3-05 2 310 30180 4.0 1209 3.6 1077
 LIFE 1382 100760 4.0 4010 3.6 3649
 Nom. All-American Jr. 3 Year-Old '00
 Nom. All-American 4 Year-Old '01
 2X Mem. AA Produce w/ All-World full sister
 Full Sister to Adeen:
 Shoremar S Alicia-ET (3E-97 EX-MS)
 6-10 2 365 35760 4.3 1544 3.4 1215
 All-American Aged Cow '03
 All-American & All-Canadian 5-Year-Old '00
 All-Canadian 4-Year-Old '99
 All-Canadian Jr. 2-Year-Old '97
6th Dam: C Aitkenbrae Starbuck Ada
 (2E-94 EEEEE DOM)
 13-08 2 365 25150 3.0 764 3.4 843
 All-American Produce of Dam 2000 & 2001
 All-American Sr. 3-Year-Old 1990
 Res. All-Time All-American 3-Year-Old 2003
 1st 3-Yr-Old & Grand Champ Eastern Nat'l '90



Pyramid-BL Black Beauty-ET
(EX-90 EX-MS)
 Dam of Lot 11



Rainyridge Tony Beauty (5E-CAN 9*)
 3rd Dam of Lot 11

11

Hinz-Bos G Chip Banshee-ET

Born 6/1/2014 Reg. 72651685 100%RHA

• *Sells Fresh*

Justin O. Hinz
 7923 Centerville Rd
 Fillmore, NY 14735
 585/689-0251

MR CHASSITY GOLD CHIP-ET
140145553 TR TV TL TY TD

EX-94 EEVE 6-00 GTPI +1880
 PTA -227M +1F -22P 99%R 4/2017
 PTA +104NM +.04%F -.06%P 55%US
 PTA +1.8PL 2.67SCS -.4DPR 3.5%DCE
 PTA +2.39T +2.47UDC +2.15FLC 99%R 4/2017

BRAEDALE GOLDWYN 10705608C
TY TV TL

GP-84-8Y CAN Extra GM GTPI +1873
REGANCREST S CHASSITY-ET 62496899
TL TY
 EX-92 EEVE GMD DOM 4-05
 3-10 2 365 42280 4.3 1798 2.7 1150
 2-01 2 365 36680 4.3 1567 3.3 1193
Global Cow of the Year 2011

PYRAMID-BL BLACK BEAUTY-ET
133766363

EX-90 EEVE 5-10
 5-05 2 365 40350 4.3 1724 2.9 1167
 2-06 2 305 22390 4.0 888 3.2 715

SILKY GIBSON-ET 6215479C BY TV TL
 EX-96 CAN GTPI +1349

STANHOPE BREA STARBUCK-ET
6813573C
 EX-94 EEEEE 2E 9-05
 9-00 2 305 29430 5.3 1563 3.0 880
 5-11 2 305 27240 4.8 1307 2.9 786
 3-04 2 362 22410 3.9 882 3.3 739
Maternal sister to Brea:
Rayverley Prelude Evelyn-ET (EX 3E 7)*
 8-08 2 365 25046 3.9 968 3.5 873

3rd Dam: Rainyridge Tony Beauty
 (EX-CAN 5E 9*)

10-5 2 365 29081 3.5 1005 3.1 913
 LIFE 8 Lact 199869 3.3 6592 3.2 6455
 All-Canadian Mature Cow 1992-93-95-99
 Grand Champion International Show 1999
 Res Grand Champion Royal Winter Fair 1999
 All-American Aged Cow 1992-95-99
 Res Grand Champion Royal Winter Fair 1995
 Grand Champion Royal Winter Fair 1993
 Nom All-Canadian Mature Cow 1991
 HM All-Canadian 4-Yr-Old Cow 1989

4th Dam: Despicks Temp Diane
 (VG-85-CAN)

8-01 2 313 17524 3.5 619 3.2 562
 LIFE 7 Lact 109278 3.7 4032 3.3 1578



Tomalynn Goldwyn Melanie-ET (VG-88 EX-MS)
 Dam of Lot 12

12 **Roll-N-View Dman Malorie-ET**

Born 3/1/2017 Reg. 840 3140280085 99%RHA

Roll-N-View
 c/o Cooper Galton
 2146 State Route 436
 Nunda, NY 14517
 585/319-7184

VAL-BISSON DOORMAN 107281711C
TV TL TY TD 99%RHA
 VG-87-CAN 50K GTPI +2361
 PTA +43M +42F +26P 99%R 4/2017
 PTA +395NM +.15%F +.09%P 26%US
 PTA +2.7PL 2.56SCS -.9DPR 5.8%DCE
 PTA +3.59T +2.57UDC +2.13FLC 98%R 4/2017

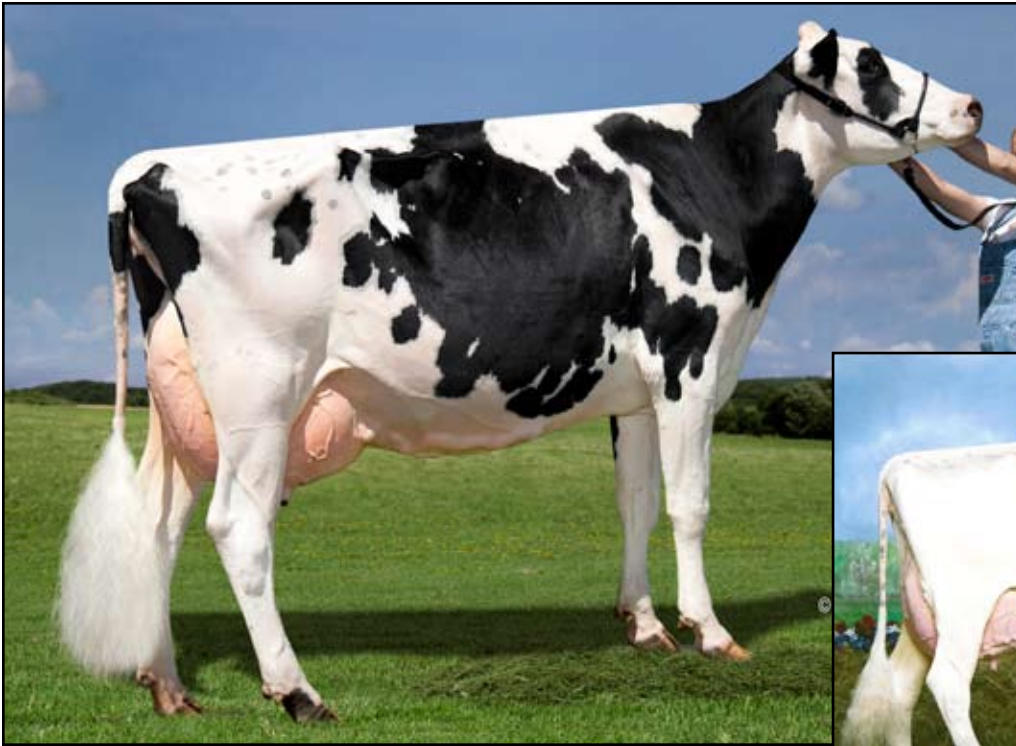
DE-SU BOOKEM-ET 66636657 99%RHA
TR TV TL TY TD
 VG-88 EV+V 6-07 GM GTPI +2341
 PTA +1269M +30F +48P 99%R 4/2017
VAL-BISSON SHOTTLE IMELDA-ET
106173432C
 EX-94 EEEEE 7-02
 4-03 2 365 40505 3.8 1550 3.6 1455
 1-11 2 365 25531 4.2 1076 3.7 957

TOMALYNN GOLDWYN MELANIE-ET
9787883C
 VG-88 EV+VE 3-07

4th Sr. 3-Year-Old World Dairy Expo 2013
3rd Sr. 3-Year-Old Eastern Fall Nat'l 2013

BRAEDALE GOLDWYN 10705608C
TY TV TL
 GP-84-8Y CAN Extra GM GTPI +1871
 PTA +1.76T +1.49UDC +1.43FLC 99%R 4/2017
TOMALYNN ALLEN MIN 8410874C
 EX-94 5E CAN 1*
 7-02 2 365 34244 3.9 1335 2.8 971
 8-07 2 365 32539 3.6 1170 3.0 963
 4-06 2 310 24773 3.8 934 3.0 742
1st Mature Cow Lindsay Ex. 2013
2nd Mature Cow Lindsay EX. 2011
HM Grand Champion Lindsay Ex. 2008
Nom. All-Ontario 2007
Res. Grand Champion Lindsay Ex. 2007

3rd Dam: Tomalynn MacGregor Maizie
 (VG-85-3Y CAN)
 4-05 2 324 25639 3.8 970 3.2 816
4th Dam: Tomalynn Approval Mazdet
 (GP-81-3Y CAN)
 4-05 2 317 20353 3.7 743 3.5 705
5th Dam: Tomalynn Insp Mazdina
 (VG-85-4Y CAN)
 5-01 2 301 20139 3.7 743 3.3 655
6th Dam: Grasshill Mazda
 (VG-85-3Y CAN)
 4-00 2 340 24524 4.0 977 3.4 825
7th Dam: Grasshill Sheik Mizz-ET
 (VG-85-4Y CAN 1*)
 4-01 2 365 22624 3.9 891 3.4 776
 LIFE 8 Lact. 145638 3.9 5615 2.7 3889



Ms Mikelholm-GH Ross Bandit
(2E-93 EEEEE)
 2nd Dam of Lot 13



LBH Superman Bottle (EX-91 EX-MS)
 3rd Dam of Lot 13

13 Mikelholm Sid Bikini
 Born 6/2/2016 Reg. 840 3126434279 100%RHA

Emily Mikel
 6321 E Bethany Leroy Rd.
 Stafford, NY 14143
 585/768-6494

PINE-TREE SID-ET 62175895 TY
 VG-86-2Y CAN ST GTPI +1602
 PTA -418M +5F -6P 99%R 4/2017
 PTA -67NM +.08%F +.03%P 16%US
 PTA -2.2PL 2.92SCS -4.1DPR 6.7%DCE
 PTA +2.26T +1.98UDC +.04FLC 99%R 4/2017

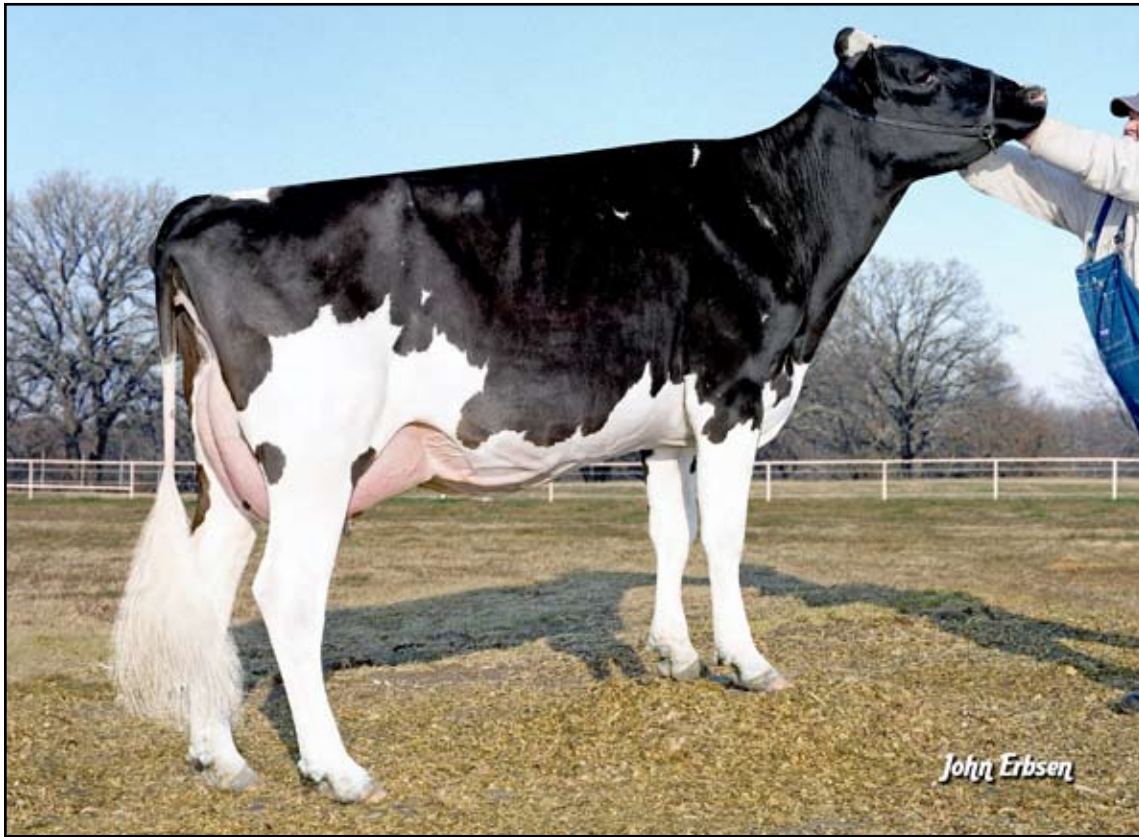
MIKELHOLM SANCHEZ BABES
65873313
 VG-88 VVVEV 3-10
 1-11 2 365 24000 3.9 925 3.1 742

REGANCREST-MR DRHAM SAM-ET
207184639 TR TV TL
 GM GTPI +1476
PINE-TREE FINLEY MINNIE-ET
61733050
 EX-90 VVEVE DOM 6-11
 4-09 2 305 26120 3.5 911 3.0 786

GEN-MARK STMATIC SANCHEZ
134422312 TR TP TV TL TY TD
 EX-94 EEEE 6-07 GTPI +1630

MS MIKELHOLM-GH ROSS BANDIT
65873256
 EX-93 EEEEE 2E 6-01
 4-06 2 365 35220 3.5 1219 3.3 1145
 3-02 2 365 29860 3.8 1144 3.2 961
 2-02 2 317 20740 3.8 783 3.3 676

3rd Dam: LBH Superman Bottle
 (EX-91 EEEVE)
 3-03 3 322 33170 3.1 1026 3.4 1115
4th Dam: Up-And-At-Em Bubble Blossom
 (VG-88 VG-MS)
 4-05 3 365 36770 4.1 1125 3.1 1149
 LIFE 2096 143070 3.3 4765 3.2 4523
5th Dam: Seawayview Astre Bubbles
 2nd Int. Calf Dundas 1999
6th Dam: Seawayview Bubbles
 (VG-85-5Y CAN)
 4-01 2 365 31074 3.3 1038 3.4 1049
7th Dam: Seawayview Champagne
 (VG-87-4Y CAN)
 3-03 2 311 21757 4.2 908 3.4 736
8th Dam: Seawayview Midnight Bubbles
 (VG-83-3Y CAN)
9th Dam: Seawayview Marlin Chrissy
 (VG-86-4Y CAN)



Miss Elegant Delight-ET (VG-88 EX-MS DOM 2y)
 2nd Dam of Lot 14

14 Hinz-Bs Ovrtime Democrat-ET
 Born 6/30/2014 Reg. 72651704 100% RHA

Bruce Hinz
 7759 Centerville Rd.
 Fillmore, NY 14735
 585/689-0249

• Sells Fresh

PINE-TREE OVERTIME P-ET 71178789
 TR PO TV TL TY TD
 50K GTPI +1978
 PTA -304M +45F +6P 99%R 4/2017
 PTA +233NM +.21%F +.06%P 35%US
 PTA +1.2PL 2.88SCS -.5DPR 7.5%DCE
 PTA +1.63T +1.59UDC +.29FLC 99%R 4/2017

OCD DETOUR DYNAMIC-RED-ET
 840 3010974993 DR1 TL TD
 VG-87 VVVVVV 4-02 GTPI+1970

AMIGHETTI NUMERO UNO-ET
 17990915143ITA TV TL TY TD
 GM GTPI +2374
 PTA +2.26T +2.24UDC +1.24FLC 99%R 4/2017
HICKORYMEA SIGNIF OHIO-P-ET
 140759222 PP
 EX-90 VE+EE 4-05
 4-01 2 305 39450 3.8 1498 3.1 1222

STONEDEN DETOUR-RED-ET 8360695C
 TV TL
 GTPI +1640
MISS ELEGANT DELIGHT-ET 63238366
 VG-88 VV+E DOM 2-09
 2-02 3 305 27850 3.4 958 3.1 855

3rd Dam: Windsor-Manor Z-Delight (EX-93)
 2-03 365 33290 3.8 1278 3.1 1046
 • Sold for \$94,000
 Maternal sister:
 Windsor-Manor Zebbee-ET (EX-91)
 4-06 365 34580 3.9 1346 3.0 1030
 • Sold for \$51,000
4th Dam: Windsor-Manor Rud Zip
 (4E-95 EEEEE GMD-DOM)
 4-07 365 39230 3.8 1490 3.1 1224
 LIFE 203770 4.2 8620 3.4 6841
5th Dam: Windsor-Manor Jolt Zippy
 (3E-90 VEEVE)
 7-07 361 34090 3.7 1255 2.9 987
 LIFE 162800 3.8 6236 3.1 4990
6th Dam: Windsor-Manor Che Zipper-ET
 (GP-83, VG-MS)
 5-03 365 36410 3.1 1127 2.8 1029
 LIFE 167380 3.2 5368 2.9 4907
7th Dam: Windsor-Manor Star Zara
 (2E-91 EEEVE GMD)
 6-01 365 41590 3.5 1453 3.2 1315
 LIFE 204030 3.7 7450 3.3 6657
8th Dam: Windsor-Manor Melvin Zebra
 (VG-85 VG-MS)
 3-08 365 27820 3.8 1050 3.3 797
9th Dam: Del-Myr Tony Zadie (VG-87)
 2-03 365 23600 3.5 835 3.4 797
10th Dam: Big-Sinks Jerry Zinna Addie
 (VG-85)
 3-01 365 22650 3.0 673 3.1 710
11th Dam: Big-Sinks Elevation Maym Zinna
 (2E-90 GMD)
 LIFE 241760 3.3 7868
12th Dam: Big-Sinks Bootmaker Ariel Maym
 (VG-85 GMD)
 4-00 365 23510 3.5 812
13th Dam: Emperor Alice Ariel
 (VG-85 GMD)
 LIFE 169080 3.6 6155



Kulp-Dale Adv Romoma-Red-ET
(VG-88 EX-MS)
 2nd Dam of Lot 15



Ms Koenen Lad Rea PP-Red-ET
(VG-87 VG-MS)
 Dam of Lot 15

15

Rollen-NS Homerun Edna P-ET *RC *PO *TD *TL

Nathaniel A Faus
 4605 County Road 29
 Rock Stream, NY 14878
 607/426-4094

Born 5/5/2015 Reg. 840 3132477520 100%RHA

12K GTPI +2068
 PTA +579M +34F +36P 75%R 4/2017
 PTA +355NM +.05%F +.07%P
 PTA +3.0PL 2.94SCS +.1DPR 6.5%DCE
 PTA +.94T +.64UDC +.13FLC 74%R 4/2017

• Due 5-30-17 to Stantons Business Plan-ET 14H07671

PINE-TREE HOMERUN-P-ET 72064036

TR PC TC TV TL TY TD

77K GTPI +2390
 PTA +1973M +58F +55P 79%R 4/2017
 PTA +621NM -.06%F -.02%P 100%US
 PTA +5.9PL 2.73SCS +.0DPR 6.3%DCE
 PTA +1.04T +.86UDC +.55FLC 78%R 4/2017
 PTA +129FE +0.3FI 6.6%SCE

MS KOENEN LAD REA PP-RED-ET
70179809 PP TL TD

VG-87 VEV+V 3-07 GTPI +1834
 PTA +2.43T +1.88UDC +1.19FLC 83%R 4/2017
 3-04 2 305 23920 4.2 999 3.3 784
 2-04 2 283 20890 4.7 980 3.3 697
1st Sr. 2-Yr-Old WNY Spring Dairy Preview 2015

SEAGULL-BAY SUPERSIRE-ET 69981349

TV TL TY TD

VG-88 EVVV 4-09 GM GTPI +2603 (4/17)

PINE-TREE 4184 TOUBI 4864 69804628

RC PO

VG-85 V+V+V 3-11 GTPI +1847
 3-04 3 305 31110 3.8 1196 3.1 976

TIGER-LILY LADD P-RED-ET 69405976

RC TV TL TY TD

EX-91 EEVE 4-02 GTPI +1956
 PTA +2.13T +1.94UDC +1.04FLC 99%R 4/2017

KULP-DALE ADV ROMOMA-RED-ET
62887153 PO

VG-88 VVVVE 3-06 GTPI +1682
 PTA +1.84T +1.70UDC +.96FLC 89%R 4/2017
 2-02 2 365 24270 4.8 1154 3.8 911

• Potential 8th Generation Excellent Roxy!!

3rd Dam: Golden-Oaks Rmn Rae2-Red-ET

(VG-88 VVVVVV)
 4-08 2 365 28390 4.4 1255 3.6 1019

4th Dam: Golden-Oaks Perk Rae-Red-ET *PO

(EX-90 EEVEE)
 1-11 3 365 31030 3.7 1161 3.2 983

2006 Genetic Award Winner WDE-Jr. 2-Yr-Old

5th Dam: Scientific Beauty Rae-ET

(EX-90 DOM)
 4-03 2 365 33710 4.7 1595 3.5 1179

6th Dam: Scientific Jubilant Rae-ET

(EX-90 EEEVV DOM)
 5-11 3 365 38880 4.1 1608 3.6 1403

LIFE 1394 117590 4.0 4707 3.6 4242

7th Dam: C Hanoverhill Tony Rae

(3E-96 EX-MS GMD DOM 5*)
 6-11 3365 40221 4.1 1660 3.5 1408

8th Dam: 2E-94 GMD

9th Dam: Mil-R-Mor Roxette

(EX-90 GMD-DOM 30*)
 LIFE 121417 4.7 5725

10th Dam: C Glenridge Citation Roxy

(4E-97 GMD)
 LIFE 209784 4.5 9471

*2X Queen of the Breed

*Mem of All-Time All-Am Prod. of Dam

*16-EX daus.; over 100 EX descendants!

11th Dam: EX-90 GMD

LIFE 218636 3.9 8581

*3X All-American Produce of Dam

12th Dam: VG-85 w/249,580 LIFE milk



Forever-Hopeful Ivy-ET (3E-92 EX-MS)
2nd Dam of Lot 16



Mactalla Leader Ida (3E-94 EX-MS)
3rd Dam of Lot 16

16 Roll-N-View Hyclass Ida

Born 12/1/2016 Reg. 840 3130800035 100%RHA

*Roll-N-View
c/o Cooper Galton
2146 State Route 436
Nunda, NY 14517
585/319-7184*

GEN-COM HY-CLASS 106566047C

RC TV TL TY TD
140K GTPI +1598
PTA -1699M -27F -28P 79%R 4/2017
PTA -202NM +.15%F +.09%P 100%US
PTA -.6PL 3.12SCS +.5DPR 8.0%DCE
PTA +2.20T +2.44UDC +2.26FLC 77%R 4/2017

ROLL-N-VIEW HEATH IVANA

72193393
GP-83 VV+++ 3-01

• Fresh again 2nd calf & looks great! More points here!

APPLES ABSOLUTE-RED-ET 139358472

CV TL TY TD
EX-94 EEVE 5-08 ST GTPI +1500
PTA +2.75T +2.72UDC +2.07FLC 99%R 4/2017
RF GOLDWYN HAILEY 7757321C
EX-94 EEEEE 5-08
6-01 2 365 34490 4.2 1450 3.3 1130
*All-American Aged Cow 2012
2X Res. All-American 2011 & 2013*

ST-JACOB ALEXANDER HEATH-ET

70074454 TV TL TY TD
GTPI +1495
FOREVER-HOPEFUL IVY-ET
63048289 TR

EX-92 EEVVE 3E 9-03
6-08 3 305 35720 3.5 1255 3.3 1168
7-09 2 365 29010 3.4 984 3.1 909
4-01 2 355 24220 3.6 880 3.2 777
2-10 2 365 21160 3.5 736 3.0 638
LIFE 1557 118270 3.5 4141 3.2 3777

3rd Dam: Mactalla Leader Ida

(3E-94 EEVVE)
6-07 2 305 23640 4.0 954 3.4 793
3-03 2 304 18600 4.0 737 3.4 624
Nom All-American Aged Cow 2004
Junior All-American Aged Cow 2004
Res Supreme Champ, WDE Jr Show 2004
Grand Champion, WDE Jr Show 2004



Howardviewwg Gold Casey-ET (2E-94 EEEEE)
 Maternal Sister to the 2nd Dam of Lot 17

17 Roll-N-View Hvezda Cystal

Born 6/6/2016 Reg. 840 3130799978 100%RHA

Roll-N-View
 c/o Todd Galton
 2146 State Route 436
 Nunda, NY 14517
 585/319-7184

ORBE-VIEW S STRM HVEZDA-ET
52760801 RC TV TL TY TD
 GTPI +1606
 PTA -27M -12F +5P 99%R 4/2017
 PTA -225NM -.04%F +.02%P 38%US
 PTA -4.1PL 2.91SCS -1.8DPR 9.9%DCE
 PTA +1.93T +.87UDC +1.78FLC 98%R 4/2017

LYLEHAVEN EXTRME CRISTAL-ET
70908324
 GP-84 V+V++ 2-09

PURSUIT SEPTEMBER STORM-ET
6820564C RC TV TL
 EX ST GM CAN 50K GTPI +1499
ORBE-VIEW DURHAM HALLIE
131228496 CV
 EX-93 EEEEE 3E DOM 9-06
 3-11 2 365 30930 2.9 906 2.9 911
 LIFE 1890 118730 3.0 3577 3.2 3741

MR ANDIS ALTAEXTREME 66960987
TV TL TY TD
 GTPI +1792
HOWARDVIEWWG ASPN CELINA-ET
139698785 B/R
 EX-90 EEE+E 5-04
 3-11 2 301 22440 3.9 884 3.2 717
 2-11 2 317 19300 4.3 821 3.3 646
 1-11 2 287 18450 4.1 759 3.2 597

Maternal Sister to:
 Howard-View GW Casey (2E-94 EEEEE)
 4-05 2 363 37190 4.1 1529 3.1 1168
 HHM Jr. All-American Aged Cow 2015
 1st 4-Year-Old & Res. Grand Champion Mideast Fall
 Nat'l 2013

3rd Dam: Lylehaven Durham Carbernet
 (EX-95 EEEEE DOM)
 3-08 2 365 40660 4.4 1802 3.6 1475
 LIFE 1289 121110 4.1 5011 3.6 4319
 Nom. All-American 5-Year-Old 2010
 2nd 5-Year-Old World Dairy Expo 2010
 1st 5-Year-Old & Grand Champion KY State
 Fair '10
 3rd Summer Yearling Eastern Fall Nat'l 2006
4th Dam: Lylehaven Chardonnay-Red-ET
 (3E-91 EEVEE GMD)
 4-09 2 365 34320 4.2 1448 3.4 1179
 LIFE 2369 192910 4.3 8284 3.5 6688
5th Dam: Belroux Storm Cristal
 (EX-96 EX-MS)
 3-00 2 365 25130 4.0 1012 3.3 824
 Nom. All-Canadian Mature Cow '07
 All-Canadian Mature Cow '06
 1st Mature Cow & Res. Grand RAWF '06
 1st Mature Cow and
 Res. Grand Quebec Int'l '06
 Res. Grand Champ Quebec Spring '05
 Res. All-Canadian Mature Cow '04
 HM All-Canadian Jr. 3-Year-Old '00
 Dam of Cairo @ Genex +4.04 +2049G
6th Dam: Belroux Lindy Irene
 (VG-86-3Y 2* CAN)
 7-07 2 313 22533 4.1 926 3.3 735
 LIFE 1852 103175 4.1 4198 3.3 3453
7th Dam: Belroux Star Irene
 (VG-86-3Y CAN)



Saxton-Hill Devil Teeki (2E-92 EX-MS)
2nd Dam of Lot 18

18

Kevetta Ladd Teka-P *RC *PO *TL *TD

Born 12/6/2013 Reg. 840 3013924131 100%RHA

GP-81 ++GG+ 2-07 9K GTPI +1754

2-02 3 365 29415 3.8 1118 3.0 878

• *Fresh 3-1-17 & looks fantastic!*

Coyne Farms, Inc. & John Barrett
5947 Avon Lima Rd
Avon, NY 14414
585/202-1327

TIGER-LILY LADD P-RED-ET

69405976 RC TV TL TY TD

EX-91 EEVE 4-02 GTPI +1939

PTA -1263M -7F -7P 99%R 4/2017

PTA +149NM +.15%F +.12%P 34%US

PTA +3.0PL 2.75SCS +2.4DPR 6.7%DCE

PTA +2.13T +1.94UDC +1.04FLC 99%R 4/2017

PTA -7FE +2.0FI 7.6%SCE

SCIENTIFIC DESTROY-ET 138122625

RC TV TL TY

EX-92 EEVE 8-05 GTPI +1963

TIGER-LILY LAWNBOY LULU-RED

65658065 TL

VG-87 VV+VV 2-08

4-07 3 305 32020 4.5 1441 3.4 1075

ORBE-VIEW S STRM HVEZDA-ET

52760801 RC TV TL TY TD

50K GTPI +1606

SAXTON-HILL DEVIL TEEKI

140246629 RC

EX-92 EEVVE 2E 6-03

4-01 2 305 38450 4.0 1535 2.9 1112

5-05 2 305 36000 3.7 1327 2.8 1007

3-00 2 347 33080 3.9 1303 3.0 1002

2-00 2 287 18420 3.7 680 3.0 554

LIFE 1471 141900 3.9 5481 2.9 4178

KEVETTA HVEZDA TEQUILA

60017639

GP-83 +VF++ 2-05

2-02 2 128 12090 3.5 423 2.9 351

3rd Dam: Saxton-Hill Miss Tee Rose

(VG-86 VVGVV)

3-06 365 23670 4.1 959 3.2 764

4th Dam: Saxton-Hill Tulip-ET

(EX-90 EEEFE)

6-01 365 39490 5.8 2293 3.6 1436

LIFE 141200 5.4 7577 3.7 5242

5th Dam: Saxton-Hill Taylor

(2E-92 EEVEE)

9-03 3 365 34340 4.8 1640 2.9 996

6-11 3 365 36220 4.5 1636 3.2 1164

LIFE 2598 191340 4.7 9076 3.4 6496

6th Dam: Saxton-Hill Starbuck Dayne

(EX-90)

9-01 3 365 30630 4.3 1312 3.1 940

LIFE 2950 186870 4.5 8356 3.2 5926

7th Dam: Win-Pin Apache Dawn

(VG-87 VG-MS)

7-05 2 305 20520 3.8 787

5-05 2 305 17990 4.6 834 3.0 532



Curr-Vale Shottle Delight
(EX-92 EEEEE)
 2nd Dam of Lot 19



Curr-Vale Goldwyn Delicious
(2E-94 EEEEE DOM)
 3rd Dam of Lot 19

19 Ms Rollen-NS Dish P-Red-ET

Rollen N's Dairy
 6190 Reading Rd
 Rock Stream, NY 14878
 607/243-7690

Born 5/16/2014 Reg. 73756166 100%RHA *PO *TL *TD
 GP-82 G++++ 2-00 13K GTPI +1930

• Fresh 3-30-17

OCD LADD DOGMA-P-ET
840 3009533665 RC PC TV TL TY TD
 50K GTPI +2050
 PTA -122M +10F +4P 87%R 4/2017
 PTA +277NM +.06%F +.03%P 100%US
 PTA +3.4PL 2.79SCS +2.1DPR 7.0%DCE
 PTA +1.74T +1.97UDC +.79FLC 80%R 4/2017

CURR-VALE DELIGHTED-RED-ET
70356792 PO TL TY
 50K GTPI +1862
 2-04 2 279 22610 3.1 694 2.8 636
 3-04 2 139 11360 3.4 383 2.7 312 (Inc)

TIGER-LILY LADD P-RED-ET 69405976
RC TV TL TY TD
 EX-91 EEEV 4-02 GTPI +1956
 PTA +2.13T +1.94UDC +1.04FLC 99%R 4/2017
MISS ELEGANT DELIGHT-ET 63238366
 VG-88 VV++E DOM 2-09
 2-02 3 305 27850 3.4 958 2.9 803

SANDY-VALLEY COLT P-RED-TW
68731810 PC TV TL TY TD
 50K GTPI +1792
CURR-VALE SHOTTLE DELIGHT
66401468 RC TV
 EX-92 EEEEE 4-10 GTPI +1911
 4-00 3 362 19920 4.4 882 3.4 679
 2-04 3 325 18100 4.7 851 3.5 641
 • 8th Generation Excellent!
 • Many high GTPI brothers & sisters!

3rd Dam: Curr-Vale Goldwyn Delicious
 (2E-94 EX-MS DOM)

3-02 3 365 32957 4.3 1412 3.1 1027
 • Former #1 EX *RC Cow of the Breed

4th Dam: Curr-Vale Durham Apricot
 (3E-91 EX-MS DOM)

6-05 3 365 44260 2.9 1263 3.0 1317
 LIFE 242590 3.4 8190 3.1 7627

5th Dam: Pineyvale Outside Apple-ET
 (2E-90)

5-07 3 305 26440 6.0 1585 3.5 923
 LIFE 178870 4.9 8721 3.2 5722

6th Dam: Pineyvale Jed Anna
 (3E-93 EEEEE)

5-10 2 305 30560 4.1 1244 3.0 932
 LIFE 2577 208840 4.2 8703 3.1 6570

7th Dam: Pineyvale Ann-Red
 (4E-94 EEEEE)

7-10 2 305 32190 3.9 1254 2.8 908
 LIFE 2121 160900 3.8 6186 2.9 4676

8th Dam: Pineyvale Starbuck All-Star
 (3E-92 EEEEE DOM)

7-08 2 305 35830 3.7 1313 3.1 1122
 LIFE 2703 253810 3.7 9329 3.1 7843

9th Dam: Pineyvale TT Ada-OC
 (EX-90 EVEE)

6-01 2 305 22040 4.4 967 3.3 728

10th Dam: Pineyvale Flame Alison
 (VG-85 DOM)

5-10 2 305 18590 3.2 603
 LIFE 2340 136810 3.3 4448

11th Dam: Pineyvale Citation Supreme Ann
 (VG-88 VVEV)

6-10 2 301 19390 3.1 595

12th Dam: Pineyvale Texal Supreme Ann
 (VG-86)

6-02 2 351 20200 3.2 652



Rainyridge Rampage Barb-Red (2E-93 CAN)
3rd Dam of Lot 20

20 Rollen-NS Jedi Bedi-ET *TL *TR *TD

Born 6/15/2016 Reg. 60227573 99%RHA
14K GTPI +2554
PTA +1311M +37F +53P 75%R 4/2017
PTA +645NM -.04%F +.05%P
PTA +7.3PL 2.87SCS +4.4DPR 6.2%DCE
PTA +1.70T +1.15UDC +1.44FLC 73%R 4/2017
PTA +109FE +4.3FI 8.3%SCE

• *High Protein, Super Productive Life
& Very High DPR!*

Nathaniel A Faus
4605 County Road 29
Rock Stream, NY 14878
607/426-4094

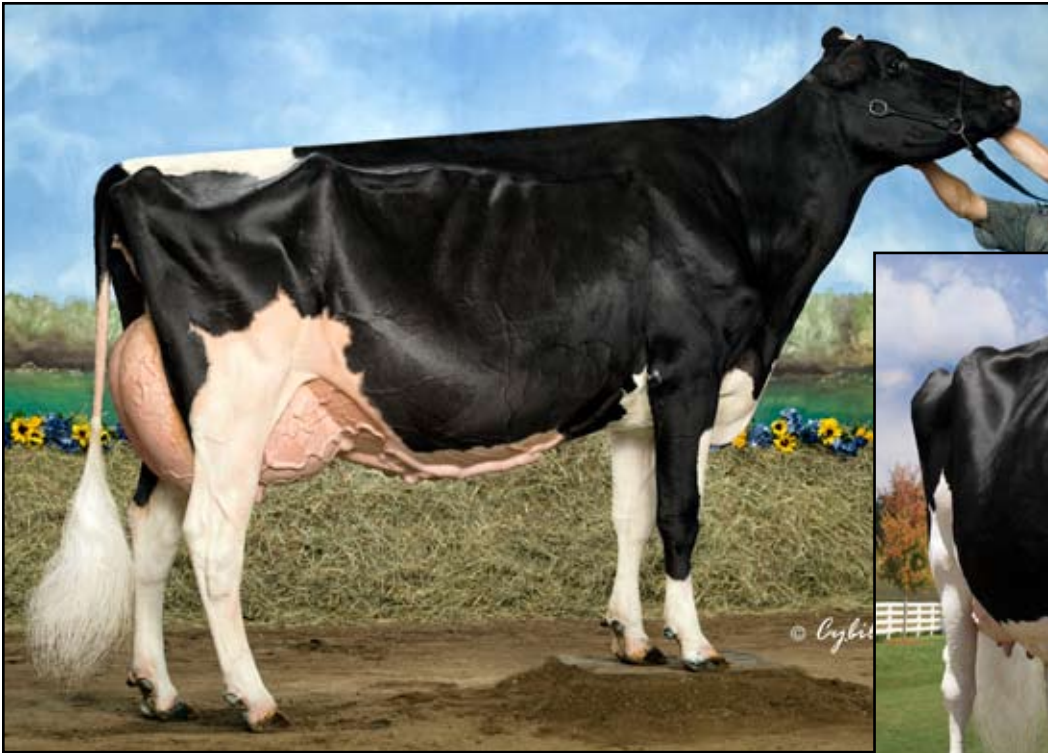
S-S-I MONTROSS JEDI-ET
840 3123886035 99%RHA TV TL TY TD
77K GTPI +2867
PTA +2726M +82F +89P 79%R 4/2017
PTA +897NM -.07%F +.02%P 100%US
PTA +7.2PL 2.95SCS +2.3DPR 4.0%DCE
PTA +2.04T +1.43UDC +1.72FLC 79%R 4/2017
PTA +212FE +2.5FI 9.1%SCE

MS PILAR BRIANN 72589951 RC PO
13K GTPI +2064
PTA +250NM +.09%F +.10%P
PTA +4.4PL 2.74SCS +3.2DPR 6.8%DCE
PTA +1.64T +2.00UDC +.92FLC 77%R 4/2017

BACON-HILL MONTROSS-ET 71703339
TV TL TY TD
VG-88 VV+E 2-11 GM GTPI +2744
S-S-I SUPRSIRE MIRI 8679-ET
840 3011538078 99%RHA
VG-88 VVVVE DOM 3-03 GTPI +2689
2-00 3 365 39810 3.5 1402 3.1 1234

COOKIECUTTER PETRON HALOGEN
840 3008710387 TP TV TL TY TD
50K GTPI +2132
RAINYRIDGE COLT CUTTERC-RED-ET
11393554C TL TD
GP-83 G+G+V 2-08 12K GTPI +1750

3rd Dam: Rainyridge Rampage Barb-Red
(2E-93 CAN)
5-00 2 365 40450 3.3 1340 3.0 1224
LIFE 4 Lact. 113447 3.5 3918 3.1 3567
4th Dam: Rainyridge Talent Barbara
(EX-95 EEEEE 12*)
3-04 2 365 34465 3.6 1257 3.3 1133
All-American 5-Year-Old 2010
5th Dam: RF Outside Breeze
(2E-95 EEEEE 2*)
8-00 3 365 37970 3.9 1484 3.4 1299
LIFE 1896 165379 4.6 7560 3.6 5973
Nom. All-West 5-Year-Old 2008
6th Dam: Rayverley Briana Milan-ET
(EX 2E CAN)
6-03 2 365 27075 3.4 928 3.2 862
7-11 2 316 26096 3.4 875 3.1 800
7th Dam: Rainyridge Tony Beauty
(EX 5E CAN)
10-05 2 365 29081 3.5 1005 3.1 913
LIFE 8 Lact. 199869 3.3 6592 3.2 6455
All-Canadian Mature Cow '92, '93, '95, '99
All-American Aged Cow '92, '95 & '99
Grand Champion WDE 1999 (14 years old!!)
8th Dam: Despics Tempo Diane
(VG-85-3Y CAN)
LIFE 7 Lact. 109278 3.7 4032



Rainyridge Talent Barbara
(EX-95 EEEEE 12*)
 4th Dam of Lots 20 & 21

21

Rollen-NS Hotshot 75-ET *TL *TD *RC

Born 4/25/2016 Reg. 60227570 100%RHA
 14K GTPI +2251
 PTA -242M +24F +9P 75%R 4/2017
 PTA +477NM +.12%F +.06%P
 PTA +7.1PL 2.73SCS +4.1DPR 7.0%DCE
 PTA +1.13T +1.47UDC +.93FLC 73%R 4/2017
 PTA +41FE +4.2FI 8.0%SCE

• *PL, DPR & Durability look great on this heifer!*

Nathaniel A Faus
 4605 County Road 29
 Rock Stream, NY 14878
 607/426-4094

S-S-I P-K SHTGLASS HOTSHOT
72190820 TR TP TV TL TY TD

77K GTPI +2509
 PTA +1268M +65F +43P 79%R 4/2017
 PTA +718NM +.07%F +.02%P 100%US
 PTA +7.5PL 2.67SCS +2.9DPR 7.0%DCE
 PTA +.88T +.79UDC +1.08FLC 79%R 4/2017
 PTA +132FE +3.3FI 6.1%SCE

BUTZ-BUTLER SHOTGLASS-ET
70476870 TR TP TV TL TY TD

EX-91 EEEE 4-03 50K GTPI +2250
S-S-I TWIST MOJO 7326-ET
840 3008328724
 GP-80 +GGF+ DOM 3-02
 3-00 3 305 25890 4.1 1060 3.4 883

MS PILAR BRIANN 72589951 RC PO

13K GTPI +2064
 PTA +250NM +.09%F +.10%P
 PTA +4.4PL 2.74SCS +3.2DPR 6.8%DCE
 PTA +1.64T +2.00UDC +.92FLC 77%R 4/2017

COOKIECUTTER PETRON HALOGEN
840 3008710387 TP TV TL TY TD

50K GTPI +2132
RAINYRIDGE COLT CUTTERC-RED-ET
11393554C TL TD
 GP-83 G+G+V 2-08 12K GTPI +1750

3rd Dam: Rainyridge Rampage Barb-Red
 (2E-93 CAN)

5-00 2 365 40450 3.3 1340 3.0 1224
 LIFE 4 Lact. 113447 3.5 3918 3.1 3567

4th Dam: Rainyridge Talent Barbara
 (EX-95 EEEEE 12*)

3-04 2 365 34465 3.6 1257 3.3 1133
 All-American 5-Year-Old 2010

5th Dam: RF Outside Breeze
 (2E-95 EEEEE 2*)

8-00 3 365 37970 3.9 1484 3.4 1299
 LIFE 1896 165379 4.6 7560 3.6 5973

Nom. All-West 5-Year-Old 2008

6th Dam: Rayverley Briana Milan-ET
 (EX 2E CAN)

6-03 2 365 27075 3.4 928 3.2 862
 7-11 2 316 26096 3.4 875 3.1 800

7th Dam: Rainyridge Tony Beauty
 (EX 5E CAN)

10-05 2 365 29081 3.5 1005 3.1 913
 LIFE 8 Lact. 199869 3.3 6592 3.2 6455
 All-Canadian Mature Cow '92, '93, '95, '99
 All-American Aged Cow '92, '95 & '99
 Grand Champion WDE 1999 (14 years old!!)

8th Dam: Despics Tempo Diane
 (VG-85-3Y CAN)

LIFE 7 Lact. 109278 3.7 4032



Silver-Shade Bell Dreamer (2E-9I GMD DOM)
5th Dam of Lot 22

22 EGL-Acres Braxton Cai-Lynn

Born 12/1/2013 Reg. 840 3011328044 99%RHA

2-00 3 365 31240 3.2 999 3.0 938

• Sells Fresh

Emily G Lampson
5357 State Route 39
Castile, NY 14427
585/567-2548

REGANCREST S BRAXTON-ET 61898423 TR TV TL TY TD

EX-95 EEEV 5-09 77K GTPI +1449
PTA +1019M -11F +2P 99%R 4/2017
PTA -229NM -.17%F -.10%P 50%US
PTA -3.2PL 3.06SCS -5.2DPR 6.9%DCE
PTA +2.50T +1.05UDC +1.33FLC 99%R 4/2017

HINZ-BOS RAVISHING DAME 141697295 99%RHA

GP-84 VV+V+ 2-06
3-00 2 305 31310 3.6 1125 3.1 975
4-03 2 305 29270 3.0 877 2.9 847
1-11 2 305 24450 3.5 849 3.0 743

PICSTON SHOTTLE-ET 598172GBR TV TL TY

EX-96-GBR GM GTPI +1937
PTA +1.18T +.89UDC +.69FLC 99%R 4/2017
**REGANCREST-PR BARBIE-ET
60602011 TV**
EX-92 EEEEE GMD DOM 7-01
2-06 2 365 31690 3.9 1237 3.1 990
HM All-American Jr. 3-Year-Old 2004

REGANCREST RAVISH 64943912 99%RHA TR TV TL TY TD

50K GTPI +1890
**O-C-E-C OUTSIDE DAIQUIRI-ET
840 3000943229**
VG-87 VEVVV 6-09
5-03 3 288 32160 3.6 1154 3.1 1005
6-02 3 305 34550 3.2 1089 3.2 1091

3rd Dam: Silver-Shade Aero-Dynamic

(2E-9I EEEEE)
6-06 2 365 37480 3.5 1328 3.1 1168
4-09 2 365 34450 3.8 1323 3.4 1168

4th Dam: Silver-Shade Mark Diedre-ET

(EX-90 EEEVV)
6-01 2 365 29900 3.7 1120 3.1 916
LIFE 1609 106090 4.0 4193 3.1 3315

5th Dam: Silver-Shade Bel Dreamer

(2E-9I EEEEV GMD DOM)
7-01 2 365 30520 3.7 1131 3.2 986

6th Dam: Knoxland Valiant M Dream

(2E-9I EVEE GMD DOM)
3-02 2 365 28230 4.2 1184 3.4 948

7th Dam: Knoxland Elevation M Starry

(VG-85 GMD DOM)
2-11 2 353 24840 4.4 1100

8th Dam: Knoxland DT M Star

(4E-92 EEEE GMD DOM)
6-04 2 365 34250 3.2 1085 3.1 1069

9th Dam: Knoxland Marquis Star

(VG-85 DOM)
8-00 2 288 20850 3.2 676
LIFE 2067 142430 3.2 4526 3.1 663

10th Dam: Kay-Ben Marquis Sensation

(VG-85 GMD)
6-01 2 305 22000 3.3 718
LIFE 2005 120640 3.1 3790

11th Dam: Milkmore Reflector M Sandy

(VG-85 VG-MS)
4-02 2 357 14440 3.8 555



Buckhorn-Acres Rubie-Red-ET (VG-89 EEVVV)
3rd Dam of Lot 23

23

Zimmerview Satelit Reggy-ET *RC *TL *TD

Rollen N's Dairy
6190 Reading Rd
Rock Stream, NY 14878
607/243-7690

Born 4/1/2016 Reg. 60227569 99%RHA
14K GTPI +2231
PTA +810M +49F +33P 75%R 4/2017
PTA +423NM +.07%F +.03%P
PTA +2.9PL 2.89SCS +1.0DPR 7.6%DCE
PTA +1.75T +1.22UDC +1.18FLC 72%R 4/2017

VENTURE SATELLITE P-ET
11946389C 99%RHA TR PC TL TD

77K GTPI +2211
PTA +360M +57F +26P 78%R 4/2017
PTA +392NM +.17%F +.07%P 100%US
PTA +2.8PL 2.78SCS -.7DPR 7.2%DCE
PTA +1.90T +1.11UDC +1.68FLC 76%R 4/2017
PTA +103FE +0.1FI 9.6%SCE

ZIMMERVIEW SYMPTC
REMMY-RED 72521939 PC

GP-83 V+V++ 3-01 9K GTPI +2365
2-03 3 365 33570 3.6 1204 3.1 1025

VIEUXSAULA FLAME-ET 71699265
99%RHA TR TP TV TL TY TD

VG-87-2Y CAN 50K GTPI +2298
VENTURE EPIC SCARLET P-ET
11567164 PO
VG-85-3Y CAN
2-03 2 365 23164 6.0 1389 3.8 869

DYMENTHOLM S SYMPATICO-ET
11004723C RC TV TL TY

GTPI +2420
BUCKHORN-ACRES ROBIN-RED-ET
139327582 PO
GP-84 VVGV 4-11 50K GTPI +1842
4-03 2 290 29030 4.2 1215 3.4 996
5-03 2 278 28460 3.7 1065 3.4 981
2-02 2 305 25820 3.8 978 3.4 872
3-04 2 293 22530 4.0 890 3.5 788
6-02 2 230 27770 3.0 830 3.3 912
LIFE 1845 165200 3.6 6018 3.4 5607

3rd Dam: Buckhorn-Acres Rubie-Red-ET
(VG-89 EEVVV)

4-07 365 34630 3.1 1085 3.2 1098
LIFE 122940 3.5 4338 3.4 3752

4th Dam: Sellcrest T Roseanne-Red-ET
(2E-93 EEEEE GMD DOM)

6-02 339 38920 4.6 1769 3.2 1224
LIFE 115040 4.7 5401 3.8 4350

1st Aged Dry Cow Grand Int'l R&W 2003
Member 1st Prod Grand Int'l R&W 2002

5th Dam: Clover-Mist Regina-RED-ET
(2E-92 EEEEE DOM)

6-01 365 32320 4.2 1359 3.6 1157
LIFE 128340 4.6 5946 3.6 4599

6th Dam: Augys Rose Regal-RED-ET
(2E-90 VVEE)

4-07 351 23550 4.9 1157 3.4 791
LIFE 102830 4.9 5022 3.3 3432

7th Dam: D-R-A August
(4E-96 EX-MS DOM)

8-05 3 365 27460 4.3 1187 3.2 871
LIFE 3443 190200 4.4 8281 3.3 4457

Nom. All-American Aged Cow '86
All-Wisconsin Aged Cow '87

8th Dam: D-R-A Ideal Precious Leader
(2E-90 EX-MS)

7-06 2 358 20090 3.9 787 3.2 637
LIFE 2456 133250 4.0 5308

9th Dam: D-R-A Princess Lad Leader (3E-90)
9-05 2 305 19160 4.2 809



Cook-Farm Zenith Brie-ET (EX-90 EX-MS)
2nd Dam of Lot 24

24 Roll-N-View Latimer Ajaxs

Born 3/23/2015 Reg. 840 3124680381 99%RHA

• Due 5-4-17 to Capital Gain

*Roll-N-View
c/o Cooper Galton
2146 State Route 436
Nunda, NY 14517
585/319-7184*

GENERATIONS LATIMER-ET
11161769C 99%RHA TV TL
GTPI +2087
PTA +481M +12F +26P 99%R 4/2017
PTA +302NM -.02%F +.04%P 67%US
PTA +1.7PL 3.06SCS +3.1DPR 4.6%DCE
PTA +.54T +.55UDC -.08FLC 98%R 4/2017

ROLL-N-VIEW WNBK BREEZE-ET
72193368 TL TD
GP-81 G++++ 2-03 9K GTPI +1915

BADGER-BLUFF FANNY FREDDIE
60996956 99% RHA TV TL TY TD
GM GTPI +2176
COMESTAR GOLDWYN LILAC-ETS
103455285C
VG-89-5Y CAN
4-06 2 365 50606 4.6 2308 3.4 1739
LIFE 1044 106756 4.6 4863 3.5 3783

GILLETTE WINDBROOK-ETS 7816429C
EX-97 CAN GTPI +1988
PTA +2.23T +1.25UDC +2.06FLC 99%R 4/2017
COOK-FARM ZENITH BRIE-ET
63590987
EX-90 EEE+E 4-08 GTPI +1855
Dam of:
-Roll-N-View Alex Bristol
All-American Spring Calf 2010
Maternal Sister to:
-Cook-Farm Bwm Buttercup-ET (EX-93 GMD)
2-01 2 365 33340 4.6 1543 3.3 1085
Buttercup is a 9th Generation VG or EX!

3rd Dam: Hidden-View Brooke-ET
(EX-92 EEEEE GMD)
4-03 2 365 39040 3.7 1439 3.3 1294
8th Generation VG or EX!
4th Dam: Hidden-View Beth-ET
(VG-88 VVV+E GMD DOM)
3-09 3 305 41620 3.0 1244 3.0 1269
LIFE1114 114360 3.5 3959 3.2 3619
Numerous Embryos Exported
5th Dam: Hidden-View Emory Beauty-ET
(2E-90 EX-MS GMD DOM)
5-01 2 365 45030 3.8 1696 3.2 1437
LIFE 2210 228700 3.8 8593 3.3 7466
6th Dam: Hidden-View Lead Becca-ET
(3E-91 GMD DOM)
6-06 2 365 45560 3.9 1796 3.0 1381
LIFE 2379 216980 4.0 8760 3.2 7017
7th Dam: VG-87 GMD DOM
7-01 2 365 40190 3.9 1579 3.0 1189
LIFE 1206 111830 3.9 4355 3.1 3454
8th Dam: VG-88 DOM
1-11 2 365 30030 3.4 1023 3.3 989
9th Dam: 3E-92
7-03 2 365 35570 3.6 1279 3.3 1178
LIFE 2189 166890 3.8 6276 3.4 5746
10th Dam: EX-90
3-01 2 365 29190 3.3 950

25

Alben-Acres Integral Jade

Peggy Bennett
4763 Pine Hill Rd
Albion, NY 14411
585/356-4500

Born 9/23/2015 Reg. 143631668 100%RHA

• Bred 12-6-16, Due 9-13-17 to Mr Apples
Armani-ET 68571374

3rd Dam: Marbank Outside Jubilee
(EX-90 EEEEV)
5-09 2 365 35530 3.8 1325 3.3 1152
LIFE 1623 132690 3.8 5025 3.3 4314
4th Dam: Marbank Janie Mason
(GP-80-2Y CAN)
1-10 3 365 25177 3.3 840 3.1 791
5th Dam: Marbank Jen Jethro
(VG-85-3Y CAN)
4-10 2 362 29550 3.5 1043 2.9 860
LIFE 6 Lact. 146253 3.3 4883 3.0 4354

BLONDIN INTERGRAL-ET
108109390C RC TV TL TY TD
77K GTPI +2279
PTA -86M +53F +9P 80%R 4/2017
PTA +402NM +.21%F +.04%P 100%US
PTA +3.0PL 2.65SCS +.7DPR 7.2%DCE
PTA +2.50T +2.76UDC +1.91FLC 79%R 4/2017

ALBEN-ACRES GOLD CHIP JADA
71362336
VG-88 VVEVV 3-09
3-06 3 286 25110 4.3 1090 2.9 717
2-03 3 305 22870 4.0 924 2.9 665

DYMENTHOLM S SYMPATICO-ET
11004723C RC TV TL TY
GTPI +2420
VAL-BISSON SHOTTLE IMELDA-ET
106173432C
EX-94 EEEEE 7-02
4-03 2 365 40505 3.8 1550 3.6 1455

MR CHASSITY GOLD CHIP-ET
140145553 TR TV TL TY TD
EX-94 EEVE 6-00 GTPI +1880
ALBEN-ACRES ASPEN JOSEY 139584598
VG-85 VEV++ 6-01
2-00 3 365 23440 4.5 1054 3.2 748
4-04 3 289 26170 4.0 1035 3.1 800
6-07 3 342 23950 4.3 1021 3.1 746
3-05 3 283 25970 3.8 985 3.1 804
5-04 3 282 19980 4.0 808 3.0 593
LIFE 1637 124210 4.1 5143 3.1 3859

26

Sco-Li GR Brdnk Kennedy

Scott & Lisa Bush
386 Watercure Hill Rd.
Elmira, NY 14901
607/733-5899

Born 12/11/2016 Reg. 144095609 100%RHA

REGANCREST-GV S BRADNICK-ET
66625940 TR TP TV TL TY TD
EX-95 EEEE 5-09 GTPI +1951
PTA +828M -24F +13P 99%R 4/2017
PTA +141NM -.20%F -.04%P 60%US
PTA +3.4PL 3.11SCS -2.0DPR 4.4%DCE
PTA +2.41T +2.73UDC +2.70FLC 99%R 4/2017

SCO-LI GOLD RUSH K KENDALL
142925276
2-01 2 303 15030 4.0 606 3.4 518

GEN-MARK STMATIC SANCHEZ
134422312 TR TP TV TL TY TD
EX-94 EEEE 6-07 GTPI +1630
REGANCREST BREYA-ET 6249685 TL
EX-90 VEEVE GMD DOM 7-09
2-02 2 365 31960 3.6 1164 3.0 965
7-07 3 308 28190 5.4 1511 3.8 1084

SCHUGS SEPTMBR GOLD RUSH-ET
140344327 TR
TPI +1696
SCO-LI LEADER KENSIE-TW 56210218

27

Sco-Li Sham Defnt Kailee

Scott & Lisa Bush
386 Watercure Hill Rd.
Elmira, NY 14901
607/733-5899

Born 12/2/2016 Reg. 144095579 100%RHA

SCIENTIFIC B DEFIANT-ET 141123484
RC TL TV TY TD
VG-87 EVV+ 4-08 GTPI +1768
PTA +435M -28F +3P 98%R 4/2017
PTA -124NM -.16%F -.04%P 84%US
PTA -9PL 3.13SCS -2.0DPR 6.0%DCE
PTA +3.60T +2.64UDC +2.26FLC 97%R 4/2017

SCO-LI SHAM WOW K KAPRISUN
143345345

REGANCREST S BRAXTON-ET 61898423
TR TV TL TY TD
EX-95 EEVE 5-09 GTPI +1449
SCIENTIFIC GOLD DIOR RAE-ET
138328405 RC CV
EX-92 EEEEE DOM 4-03
4-02 2 365 31910 4.7 1495 3.4 1099
2-02 2 365 31900 4.7 1484 3.7 1172

MORSAN MR SHAM WOW-ET 9626865C
TR TV TL TY TD
GTPI +1830 (12/16)
SCO-LI PRINCE KIT KAT 53803076
VG-87 EV+VV 5-09
4-06 2 305 25700 4.2 1076 3.1 799
3-03 2 305 23720 3.8 904 3.2 765
2-03 2 305 18740 4.0 753 3.2 600
LIFE 1789 101090 4.1 4125 3.2 3192

28

Sco-Li Armani Am Myrna

Scott & Lisa Bush
386 Watercure Hill Rd.
Elmira, NY 14901
607/733-5899

Born 3/23/2015 Reg. 143521411 100% RHA

• Fresh 3-29-17

MR APPLES ARMANI-ET 68571374
RC TV TL TY TD
EX-90 EEEV 4-10 GTPI +2087
PTA -1491M +33F -4P 99%R 4/2017
PTA +249NM +.35%F +.16%P 67%US
PTA +.9PL 2.79SCS +2.0DPR 5.3%DCE
PTA +1.97T +2.00UDC +2.10FLC 98%R 4/2017

SCO-LI DUNDEE MYRA 53803035
VG-88 EEE+V 6-11
6-04 2 305 24060 4.4 1064 3.6 870
3-04 2 305 20860 4.8 994 3.8 787
5-04 2 305 21780 4.5 986 3.8 823
4-04 2 288 19680 4.7 929 3.7 737
2-01 2 305 18050 4.6 828 3.8 678
LIFE 1682 113630 4.7 5288 3.7 4258

BRAEDALE GOLDWYN 10705608C
TY TV TL
GP-84-8Y CAN Extra GM GTPI +1871
PTA +1.76T +1.49UDC +1.43FLC 99%R 4/2017
KHW REGIMENT APPLE-RED-ET
135511521 CV
EX-96 EEEEE 3E DOM 9-06
9-01 2 365 36750 4.3 1582 3.5 1280
LIFE 2898 240640 4.711394 3.7 9013
2013 HI Red Impact Cow of the Year

REGANCREST DUNDEE-ET 127640114
TV TL TY
EX-95 EEEV 6-08 GTPI +1386
GLENSITE HARP MAMIE 132990998
5-04 2 365 32540 3.6 1157 3.3 1074
3-02 2 365 22980 4.3 981 3.5 800
2-02 2 335 25650 3.7 937 3.2 825
6-07 2 224 21670 3.9 836 3.4 731
LIFE 1700 134650 3.8 5172 3.4 4527

3rd Dam: Glensite BC Sunbuck Marissa
(EX-90 EX-MS)
4-04 2 309 24460 3.7 904 3.3 816

29

Defiant Female Pending

Scott & Lisa Bush
386 Watercure Hill Rd.
Elmira, NY 14901
607/733-5899

Born 3/29/2017 Reg. Pending 100% RHA

SCIENTIFIC B DEFIANT-ET 141123484
RC TL TV TY TD
VG-87 EVV+ 4-08 GTPI +1768
PTA +435M -28F +3P 98%R 4/2017
PTA -124NM -.16%F -.04%P 84%US
PTA -.9PL 3.13SCS -2.0DPR 6.0%DCE
PTA +3.60T +2.64UDC +2.26FLC 97%R 4/2017

SCO-LI ARMANI AM MYRNA
143521411

• Fresh 3-29-17
• Sells as Lot 28

REGANCREST S BRAXTON-ET 61898423
TR TV TL TY TD
EX-95 EEEV 5-09 GTPI +1449
SCIENTIFIC GOLD DIOR RAE-ET
138328405 RC CV
EX-92 EEEEE DOM 4-03
4-02 2 365 31910 4.7 1495 3.4 1099
2-02 2 365 31900 4.7 1484 3.7 1172

MR APPLES ARMANI-ET 68571374
RC TV TL TY TD
EX-90 EEEV 4-10 GTPI +2087
SCO-LI DUNDEE MYRA 53803035
VG-88 EEE+V 6-11
6-04 2 305 24060 4.4 1064 3.6 870
3-04 2 305 20860 4.8 994 3.8 787
5-04 2 305 21780 4.5 986 3.8 823
4-04 2 288 19680 4.7 929 3.7 737
2-01 2 305 18050 4.6 828 3.8 678
LIFE 1682 113630 4.7 5288 3.7 4258

3rd Dam: Glensite Harp Mamie
5-04 2 365 32540 3.6 1157 3.3 1074
LIFE 1700 134650 3.8 5172 3.4 4527
4th Dam: Glensite BC Sunbuck Marissa
(EX-90 EX-MS)
4-04 2 309 24460 3.7 904 3.3 816

30

Car-Bu PR Wenda Shottle

Carl & Barbara George
2272 Fisher Blake Rd
Freedom, NY 14065
716/492-1489

Born 1/11/2015 Reg. 72113397 100% RHA

• Sells Fresh

PICSTON SHOTTLE-ET 598172GBR
TV TL TY
EX-96-GBR GM GTPI +1937
PTA +478M +27F +11P 99%R 4/2017
PTA +192NM +.03%F -.02%P 13%US
PTA +1.9PL 2.77SCS -.1DPR 8.1%DCE
PTA +1.18T +.89UDC +.69FLC 99%R 4/2017

CAR-BU SMILE SHOT-TW 69600115
VG-85 VV+V 3-03
2-11 3 365 34630 4.5 1558 3.3 1144
1-10 3 335 27060 4.2 1131 3.2 871
4-02 3 305 26220 4.5 1167 3.0 787

CAROL PRELUDE MTOTO-ET
6001001962ITA
GM GTPI +1689
CONDON AERO SHARON 5372153C
EX-90

LINCOLN-HILL SHOT LASER-ET
62072898 TR TV TL TY TD
EX-92 EEEE 8-08 GTPI +1929
CAR-BU PROMISE JEEVES 63955444
VG-88 VE+VV 5-08
5-02 3 365 35480 4.5 1609 3.4 1192
4-01 3 352 34990 4.2 1457 3.4 1181
2-11 3 306 28910 4.7 1365 3.4 983
6-09 3 273 27380 4.3 1167 3.1 841
1-11 3 305 22730 4.4 1011 3.4 779
LIFE 1740 155660 4.4 6920 3.2 4970

31 Jdeep-Valley Sassy Sparkle

Born 8/1/2014 Reg. 143156765 100%RHA

• Due 6-2017 to a grade bull

Jacob Geiser
209 Tickner Ln.
Mansfield, PA 16933
570/549-2319

ERNEST-ANTHONY TURBO-ET

135647723

EX-90 VEEE 1-05 50K GTPI +1151
PTA -1325M +0F -24P 99%R 4/2017
PTA -375NM +.19%F +.06%P 11.8%US
PTA -3.3PL 3.26SCS -4.8DPR 11.9%DCE
PTA +.66T -.26UDC +.22FLC 99%R 4/2017

DEEP-VALLEY PROMOTE SASSY

140406311

VG-87 VVVVV 5-00
3-05 2 305 22120 4.2 918 2.9 652
4-07 2 305 21590 3.8 813 2.8 608
2-02 2 354 18330 3.4 630 3.0 556

EK-OSEEANA ASPEN-ET 129854100

TV TL

EX-91 50K GTPI +1261
ERNEST-ANTHONY SD TOBI-ET
15803361

EX-96 EEEEE 3E DOM 9-02
6-00 2 365 44090 5.0 2191 3.2 1423
LIFE 1701 151933 5.5 8372 3.4 5150
HM All-American 125,000lb. Cow 2004

WINDY-KNOLL-VIEW PROMOTE-ET

132815970

EX-92 EEEE 5-11 50K GTPI +1428

DEEP-VALLEY LDRSP SNOWFLAKE

136052041

VG-85 EVE++ 6-00
5-00 2 305 19780 4.0 794 3.1 619
3-10 2 305 18040 4.1 731 3.3 597
2-10 2 305 13950 4.7 650 3.2 450
6-07 2 254 14500 4.2 612 3.0 439

3rd Dam: Deep-Valley Mon Sherie *RC

(VG-86 VG-MS)
3-11 2 305 22650 3.5 798 3.3 751

4th Dam: Deep-Valley Ajjet Sybil-Red

(EX-90 EEVVV)
9-03 2 305 21450 4.5 957 3.0 640
LIFE 3001 169320 4.2 7068 3.0 5139

5th Dam: Deep-Valley Valiant Bren Jess

(5E-93 EEEVE DOM)
5-02 2 365 29743 4.0 1181 2.8 834
LIFE 3280 210663 4.3 9125 2.9 6081

6th Dam: Deep-Valley Elevation Brenda

(VG-87 VEVV DOM 7-08)
7-10 2 365 27500 3.7 1031 2.8 757
LIFE 3379 217460 3.9 8452 2.8 6095

32 Car-Bu A Mai Mogul Pety-TW

Born 4/20/2015 Reg. 72113410 100%RHA

• Sells Fresh

Carl & Barbara George
2272 Fisher Blake Rd
Freedom, NY 14065
716/492-1489

SIEMERS MOGUL PETY

840 3010660326 TV TL TY TD

VG-88 EVVV 3-00 GTPI +2457
PTA +1321M +53F +45P 96%R 4/2017
PTA +598NM +.01%F +.02%P 100%US
PTA +4.5PL 2.96SCS -.1DPR 3.9%DCE
PTA +2.74T +2.86UDC +1.72FLC 91%R 4/2017

CAR-BU SUPRSTN MAISIE-ET

69600058

GP-81 +V+G+ 2-04 GTPI +1862
2-11 3 316 38790 3.0 1153 2.8 1087
1-11 3 302 33960 2.8 950 2.7 924
3-11 3 246 30280 3.0 910 2.7 829
LIFE 864 103030 2.9 3013 2.8 2840

MOUNTFIELD SSI DCY MOGUL-ET

840 3006972816 TR TV TL TY TD

EX-91 EEVE 5-03 GM GTPI +2494
PTA +2.30T +2.48UDC +2.42FLC 99%R 4/2017

RANSOM-RAIL EXPOLIDE PETY-ET

69379131

EX-90 EEV+E GMD DOM 4-00
3-10 3 365 52260 3.8 1978 3.5 1803

CHARLESDALE SUPERSTITION-ET

62065919 TR TC TV TL TY TD

GM GTPI +2127
CAR-BU A MAISIE WIZARD-TW
61328685

VG-86 VVVEV 2-10
3-02 3 365 33700 3.7 1236 2.9 971
4-09 3 305 31940 3.9 1251 3.0 947
2-02 3 298 26730 3.6 952 2.7 719
5-08 3 213 22880 4.2 950 3.0 687
LIFE 1340 128100 3.8 4903 2.9 3751

33

Mattockstead Anchor Bow

James T. Jenkins

6365 Austinville Rd

Columbia Cross Roads, PA 16914

570/297-4786

Born 5/28/2013 Reg. 71441704 100%RHA

GP-80 ++++G 3-03

2-04 2 305 19510 3.9 752 3.0 583

• Fresh 3-15-17

COCALICO SHOTTLE ANCHOR-ET

141244992

PTPI +1693

PTA -56M +13F +2P 68%R 4/2017

PTA -30NM +.06%F +.01%P 100%US

PTA -.7PL 2.85SCS -1.9DPR

PTA +1.43T +.73UDC +.72FLC 44%R 4/2017

PICSTON SHOTTLE-ET 598172GBR

TV TL TY

EX-96-GBR GM GTPI +1937

PTA +1.18T +.89UDC +.69FLC 99%R 4/2017

CRANBERRY-MDWS GIBSON AFTER

136277990

EX-94 EEEEE 2E 6-06

3-07 2 365 31160 4.5 1407 3.2 993

LIFE 2383 158100 4.5 7130 3.4 5332

MATTOCKSTEAD ROSS BIANCA

66790682

VG-86 VVVGV 6-01

5-05 2 304 22010 3.4 740 3.0 663

4-05 2 289 20350 2.5 506 3.0 611

3-04 2 305 21210 2.4 517 3.1 664

PLAIN-O DURHAM ROSS-331-ET

60549654 TR TV TL TD

EX-90 EEVV 6-10 GTPI +1668

MATTOCKSTEAD ROMEO BRYNNE

62887047

GP-80 ++FG+ 2-10

2-05 2 290 25270 4.1 1041 3.0 749

34

Leona-View Atwood Gold-Tw

James T. Jenkins

6365 Austinville Rd

Columbia Cross Roads, PA 16914

570/297-4786

Born 11/27/2014 Reg. 72876684 100%RHA

• Fresh 3-1-17

MAPLE-DOWNS-I G WATWOOD-ET

8956379C TR TV TL TY TD

EX-90 EE+V 4-06 GTPI +1897

PTA -20M +30F +4P 99%R 4/2017

PTA +46NM +.11%F +.02%P 52%US

PTA -.5PL 3.04SCS -3.2DPR 9.8%DCE

PTA +3.44T +2.43UDC +2.63FLC 99%R 4/2017

BRAEDALE GOLDWYN 10705608C

TY TV TL

GP-84-8Y CAN Extra GM GTPI +1871

PTA +1.76T +1.49UDC +1.43FLC 99%R 4/2017

MD-DELIGHT DURHAM ATLEE-ET

131704103

EX-92 EEEEE GMD DOM 4-06

3-11 2 365 38290 5.5 2091 3.3 1249

All-American Sr. 3-Year-Old 2005

MATTOCKSTEAD GABOR GLORIA

66790710

VG-85 VVVGV 5-03

3-06 2 305 24700 2.7 676 2.7 670

WILLOW-MARSH-CC GABOR-ET

60845420 TV TR TL TY TD

EX-94 EEEE 8-10 GM GTPI +1983

MATTOCKSTEAD ENCORE GLORY

134937711

VG-87 VVVVV 5-06

5-02 2 305 24380 4.2 1013 2.9 713

4-02 2 305 26430 3.6 952 2.8 741

2-07 2 305 22790 3.6 818 2.9 671

3rd Dam: Mattockstead Integrity Gina

(VG-88 VEVVV)

4-04 2 305 37060 2.8 1028 2.8 1045

3-05 2 283 34650 2.9 1013 2.8 987

LIFE 1077 113030 3.0 3371 2.9 3239

35

Three-Miles Corey Herman *MALE*

Chase & Bethany Miles

111 Bordell Cross Rd.

Smethport, PA 16749

814/887-9299

Born 8/14/2016 Reg. 143971337 100%RHA

EVEN-PAR COREY-ET 71630805

TR CV TP TV TL TY TD

50K GTPI +2183

PTA +414M +37F +13P 93%R 4/2017

PTA +325NM +.08%F +.01%P 100%US

PTA +2.5PL 2.71SCS -.7DPR 8.2%DCE

PTA +2.71T +2.43UDC +1.97FLC 79%R 4/2017

SHEEMA JEEVES CAMERON-ET

66747411 TV TL TY TD

GTPI +2023

EVEN-PAR ALEX CIENNA-ET 66758420

EX-93 EEVVE 2E GMD DOM 6-10

3-08 2 305 33860 3.8 1281 2.9 990

THREE-MILES COLBY HEMI

135831906

EX-94 EEEEE 4E 12-02

7-09 2 365 28100 4.1 1140 3.1 858

9-03 2 365 26800 3.8 1011 3.0 809

5-05 2 288 24570 4.1 1008 2.9 723

10-07 2 347 23940 4.0 952 3.1 732

6-05 2 313 22600 4.0 910 3.1 696

3-11 3 305 19370 4.4 850 3.2 622

2-00 2 311 19200 3.7 711 3.2 611

3-00 2 267 18550 3.7 694 3.2 588

LIFE 2927 204100 4.1 8356 3.1 6332

SOLID-GOLD COLBY-ET 60697343

TR TV TL TY TD

EX-93 EEVE 9-05 GM GTPI +1762

HIGHCROFT MEGAIDER HOLLY

130012090

GP-81 +V+F+ 5-01

6-06 2 365 25780 4.4 1126 3.0 773

4-11 2 365 25170 4.3 1070 3.1 787

8-03 2 365 22900 4.5 1039 3.0 685

2-04 2 365 20560 4.5 917 3.2 666

3-11 2 305 19490 4.6 890 3.4 664

LIFE 2433 142880 4.4 6352 3.2 4540

3rd Dam: Highcroft Astroaider Hope

(GP-84 VG-MS)

3-08 2 336 17450 4.0 701 3.2 555

4th Dam: Highcroft Bell Astro Higgie

(EX-91 EEEVE)

3-04 2 365 20550 3.9 808 3.5 713

5th Dam: Highcroft Val Bell Honie

(GP-84 DOM)

LIFE 2463 141230 4.1 5822 3.4 4803

36 Three-Miles Corvette Bala

Chase & Bethany Miles
111 Bordell Cross Rd.
Smethport, PA 16749
814/887-9299

Born 11/14/2014 Reg. 143305888 100%RHA

• Fresh 12-18-16, Bred 2-28-17 to Mr D Apple
Diamondback 840 3013721049

3rd Dam: Three-Miles Bonita
(VG-88 VG-MS)
6-05 3 365 39380 3.3 1286 3.3 1292
LIFE 1925 165500 3.3 5463 3.3 5521
4th Dam: Three-Miles Bokanna
(EX-90 EVEVE)
6-03 2 365 27300 4.2 1158 3.4 915
LIFE 1829 117330 4.3 5061 3.5 4122

SONNEK GC CORVETTE-ET 71391400
TR TP TV TL TY TD
EX-90 EVEV 3-04 77K GTPI +2059
PTA -.65M +19F +8P 98%R 4/2017
PTA +141NM +.08%F +.04%P 100%US
PTA +.4PL 2.80SCS -.5DPR 4.4%DCE
PTA +2.86T +2.12UDC +2.74FLC 89%R 4/2017

THREE-MILES AFTRSHOCK BONUS
141104931
VG-87 +VVEV 5-04
5-02 2 327 26030 4.2 1094 3.1 815
4-01 2 331 25810 3.8 989 3.1 797
3-01 2 287 20020 3.8 763 3.2 636
2-03 2 262 17210 3.4 588 3.1 536

MR CHASSITY GOLD CHIP-ET
140145553 TR TV TL TY TD
EX-94 EEVE 6-00 GTPI +1880
PTA +2.39T +2.47UDC +2.15FLC 99%R 4/2017
SONNEK DAMION CHARLIE-ET
138545776
EX-94 EEEEE 3E 9-05
6-00 2 365 31230 4.2 1315 3.5 1102
LIFE 2136 147750 4.0 5896 3.7 5452

MS ATLEES SHT AFTERSHOCK-ET
65249839 TV TL TY TD
EX-92 EEVE 7-05 GTPI +1723
THREE-MILE NOBEL BODE 134118154
VG-88 VV+VE 8-10
4-10 3 365 34140 3.0 1030 3.1 1056
6-04 2 365 25450 3.5 879 3.1 790
7-06 2 334 25970 3.4 871 3.1 804
2-11 2 319 24320 3.1 751 3.2 768
3-11 2 279 21710 3.1 669 3.1 676
2-00 2 271 18420 2.8 519 3.1 577
LIFE 2196 166840 3.2 5283 3.1 5243

37 Three-Miles Alexndr Balsum

Chase & Bethany Miles
111 Bordell Cross Rd.
Smethport, PA 16749
814/887-9299

Born 12/18/2016 Reg. 144034594 100%RHA

3rd Dam: Three-Mile Nobel Bode
(VG-88 EX-MS)
4-10 3 365 34140 3.0 1030 3.1 1056
LIFE 2196 166840 3.2 5283 3.1 5243
4th Dam: Three-Miles Bonita
(VG-88 VG-MS)
6-05 3 365 39380 3.3 1286 3.3 1292
LIFE 1925 165500 3.3 5463 3.3 5521
5th Dam: Three-Miles Bokanna
(EX-90 EVEVE)
6-03 2 365 27300 4.2 1158 3.4 915
LIFE 1829 117330 4.3 5061 3.5 4122

GOLDEN-OAKS ST ALEXANDER-ET
61133837 TR TV TL TY TD
EX-94 EEEE 8-02 GTPI +1730
PTA +167M +51F +2P 99%R 4/2017
PTA +123NM +.16%F -.01%P 53%US
PTA -.6PL 3.09SCS -.3.2DPR 9.1%DCE
PTA +.92T +.39UDC +.74FLC 99%R 4/2017

THREE-MILES CORVETTE BALA
143305888

• Sells as Lot 36

COMESTAR STORMATIC-ET 6947936
TV TL
EX CAN GM GTPI +1457
NEU-WAY PATRON ALLIE-ET 17216847
CV TM
VG-87 VE+VV GMD DOM 2-08 GTPI +1593
1-11 2 365 35440 3.9 1398 3.3 1168

SONNEK GC CORVETTE-ET 71391400
TR TP TV TL TY TD
EX-90 EVEV 3-04 77K GTPI +2059
PTA +2.86T +2.12UDC +2.74FLC 89%R 4/2017
THREE-MILES AFTRSHOCK BONUS
141104931
VG-87 +VVEV 5-04
5-02 2 327 26030 4.2 1094 3.1 815
4-01 2 331 25810 3.8 989 3.1 797
3-01 2 287 20020 3.8 763 3.2 636
2-03 2 262 17210 3.4 588 3.1 536

38 Three-Miles Defiant Bobbi

Chase & Bethany Miles
111 Bordell Cross Rd.
Smethport, PA 16749
814/887-9299

Born 4/30/2016 Reg. 143845603 100%RHA

3rd Dam: Three-Miles Bandino
(VG-88 EX-MS)
5-00 2 365 34380 3.4 1181 3.3 1123
LIFE 3425 235770 3.7 8760 3.4 7907

4th Dam: Three-Miles Bandanna
(4E-92 EX-MS)
8-10 2 357 31500 3.7 1150 3.1 963
LIFE 3260 235700 3.7 8708 3.1 7403

SCIENTIFIC B DEFIANT-ET 141123484
RC TL TV TY TD
VG-87 EVV+ 4-08 GTPI +1768
PTA +435M -28F +3P 98%R 4/2017
PTA -124NM -.16%F -.04%P 84%US
PTA -.9PL 3.13SCS -2.0DPR 6.0%DCE
PTA +3.60T +2.64UDC +2.26FLC 97%R 4/2017

THREE-MILES DUSK BENNI
142129821
GP-82 +++G+ 3-05
2-03 2 365 28020 3.1 862 3.2 897
3-07 2 262 19820 3.6 707 3.1 609

REGANCREST S BRAXTON-ET 61898423
TR TV TL TY TD
EX-95 EEVE 5-09 GTPI +1449
SCIENTIFIC GOLD DIOR RAE-ET
138328405 RC CV
EX-92 EEEEE DOM 4-03
4-02 2 365 31910 4.7 1495 3.4 1099
2-02 2 365 31900 4.7 1484 3.7 1172

SCIENTIFIC SS DUSK-ET 135782006 TV
RC TL TY TD
EX-94 EEVE 4-07 GTPI +1665
THREE-MILES BOSS BANNER-TW
136762171
GP-82 ++VG+ 5-06
5-07 2 365 36730 3.1 1134 3.0 1088
7-03 2 365 36580 2.9 1054 2.8 1039
4-02 2 365 31090 2.8 870 3.0 942
1-11 2 365 26210 3.1 817 3.2 832
LIFE 2192 170390 3.0 5182 3.1 5239

39 Danshire Attic Harmony

Daniel & Shirley Tice
Rr 3 Box 216
Coudersport, PA 16915
814/274-8551

Born 6/11/2016 Reg. 144112953 100% RHA

ALLYNDALE-I ATTIC-ET 8956386C
TV TL TY
GP-83-2Y CAN GTPI +1673
PTA -876M +15F -11P 99%R 4/2017
PTA -59NM +.18%F +.06%P 29%US
PTA -1.9PL 2.90SCS -2.3DPR 9.4%DCE
PTA +2.09T +1.76UDC +1.26FLC 97%R 4/2017

DANSHIRE HOPEFULL 143378581
VG-86 VE+GV 5-01
3-10 2 305 26510 3.2 840 3.2 846

BRAEDALE GOLDWYN 10705608C
TY TV TL
GP-84-8Y CAN Extra GM GTPI +1871
PTA +1.76T +1.49UDC +1.43FLC 99%R 4/2017
MD-DELIGHT DURHAM ATLEE-ET
131704103
EX-92 EEEEE GMD DOM 4-06
3-11 2 365 38290 5.5 2091 3.3 1249
All-American Sr. 3-Year-Old 2005

SCIENTIFIC SS DEUCE-ET 135781957
RC TV TL TY
EX-90 EEV+ 4-07 GTPI +1670
DANSHIRE JAD EHORIZON 131997198
VG-87 VEVGE 12-01
5-10 2 305 24390 4.1 995 3.2 775
13-00 2 305 23810 3.9 929 3.2 751
4-05 2 305 20170 4.3 866 3.2 654
8-03 2 305 19650 4.4 865 3.4 6660
11-05 2 305 21170 3.8 798 3.3 691
LIFE 4023 240510 4.310386 3.3 8038

40 Danshire Absolute Rosanne *RC

Leon W. & Cathy L. Tice
1312 Dividing Ridge Road
Coudersport, PA 16915
814/274-8659

Born 11/3/2016 Reg. 144112962 100% RHA

APPLES ABSOLUTE-RED-ET
139358472 CV TL TY TD
EX-94 EEVE 5-08 ST GTPI +1500
PTA -1580M +7F -12P 99%R 4/2017
PTA -265NM +.26%F +.14%P 64%US
PTA -4.0PL 3.45SCS -4.0DPR 11.1%DCE
PTA +2.75T +2.72UDC +2.07FLC 99%R 4/2017

DANSHIRE SAILING RUBY 142379338
VG-85 VV+GV 3-02
2-09 2 305 22070 3.4 743 2.8 620

LADINO PARK TALENT-IMP-ET
930377AUS RC TV TL
EX-90-6Y AUS ST GTPI +1367
KHW REGIMENT APPLE-RED-ET
135511521 CV
EX-96 EEEEE 3E DOM 9-06
9-01 2 365 36750 4.3 1582 3.5 1280
LIFE 2898 240640 4.711394 3.7 9013
2013 HI Red Impact Cow of the Year

PREMIER-KERNDT SAILING-ET
62433020 TY TD
GTPI +1801
DANSHIRE LHEROS ROSELE 139060344
GP-83 VVVG+ 5-06
3-05 2 305 21350 3.6 775 3.2 679
2-04 2 305 15150 4.0 604 3.1 476
4-06 2 305 16530 3.6 596 3.0 504

3rd Dam: Danshire Rebecca
(VG-85 VG-MS)
5-09 2 305 20950 4.5 946 3.4 714

41 Danshire Gsun Monalisa

Leon Tice
1312 Dividing Ridge Road
Coudersport, PA 16915
814/274-8659

Born 4/18/2016 Reg. 144112971 100% RHA

TOC-FARM GOLDSUN-ET
53990032335ITA
GTPI +1514
PTA -1080M -43F -22P 99%R 4/2017
PTA -239NM -.01%F +.04%P 22%US
PTA -.6PL 2.87SCS -1.9DPR 7.3%DCE
PTA +1.82T +2.41UDC +.41FLC 99%R 4/2017

DANSHIRE TUNDEL MAE
143378684 RC
VG-85 VVGV+ 3-11
3-05 2 305 26060 4.2 1105 3.3 869
2-04 2 305 19290 4.7 908 3.2 611

BRAEDALE GOLDWYN 10705608C
TY TV TL
GP-84-8Y CAN Extra GM GTPI +1871
PTA +1.76T +1.49UDC +1.43FLC 99%R 4/2017
TOC-FARM ALLEN AMYLY
53000628285ITA

PEACHEY TUNDEL-RED 137221291
EX-92 EEEE 4-05 GTPI +1667
DANSHIRE TRIBUTE MINOU 13906371
GP-83 +++G+ 5-04
3-01 2 305 22020 3.9 858 3.0 661
4-03 2 285 15080 4.4 662 3.3 494
2-00 2 305 15620 4.0 631 3.1 487
5-02 2 295 17660 3.5 618 2.9 517

3rd Dam: Danshire Mercedes
(VG-85 VG-MS)
3-03 2 305 22030 3.8 838 3.3 737
LIFE 2291 130640 3.7 4898 3.3 4369

42 Danshire Absolute Dallas *RC

Leon W. & Cathy L. Tice
1312 Dividing Ridge Road
Coudersport, PA 16915
814/274-8659

Born 6/15/2016 Reg. 144113271 100% RHA

APPLES ABSOLUTE-RED-ET
139358472 CV TL TY TD
EX-94 EEVE 5-08 ST GTPI +1500
PTA -1580M +7F -12P 99%R 4/2017
PTA -265NM +.26%F +.14%P 64%US
PTA -4.0PL 3.45SCS -4.0DPR 11.1%DCE
PTA +2.75T +2.72UDC +2.07FLC 99%R 4/2017

DANSHIRE REGINALD DELILAH
142379310
VG-87 VV++V 4-09
3-05 2 305 21360 3.4 732 3.3 699
2-04 2 305 17840 3.5 626 3.2 579
4-05 2 217 13340 3.8 505 3.2 427

LADINO PARK TALENT-IMP-ET
930377AUS RC TV TL
EX-90-6Y AUS ST GTPI +1367
KHW REGIMENT APPLE-RED-ET
135511521 CV
EX-96 EEEEE 3E DOM 9-06
9-01 2 365 36750 4.3 1582 3.5 1280
LIFE 2898 240640 4.711394 3.7 9013
2013 HI Red Impact Cow of the Year

REGANCREST REGINALD-ET 62496439
TY TD
GTPI +1990
DANSHIRE DAMION DOTSY 141273013
VG-86 VVV+V 6-01
5-09 2 305 24510 3.1 768 3.1 750
4-07 2 305 19460 3.4 665 3.1 610

43 Danshire Sid Delaney

Leon W. & Cathy L. Tice
1312 Dividing Ridge Road
Coudersport, PA 16915
814/274-8659

Born 10/2/2016 Reg. 144113178 100% RHA

• Maternal Sister to Danshire Reginald
Delilah (VG-87 VG-MS), dam of Lot 42

PINE-TREE SID-ET 62175895 TY
VG-86-2Y CAN ST GTPI +1602
PTA -418M +5F -6P 99%R 4/2017
PTA -67NM +.08%F +.03%P 16%US
PTA -2.2PL 2.92SCS -4.1DPR 6.7%DCE
PTA +2.26T +1.98UDC +.04FLC 99%R 4/2017

DANSHIRE DAMION DOTSY
141273013
VG-86 VVV+V 6-01
5-09 2 305 24510 3.1 768 3.1 750
4-07 2 305 19460 3.4 665 3.1 610

REGANCREST-MR DRHAM SAM-ET
207184639 TR TV TL
GM GTPI +1476
PINE-TREE FINLEY MINNIE-ET
61733050
EX-90 VVEVE DOM 6-11
4-09 2 305 26120 3.5 911 3.0 786

ERBACRES DAMION 130263722
TR TV TL TY TD
EX-96 EEEE 11-01 GTPI +1468
PTA +2.08T +1.13UDC +2.26FLC 99%R 4/2017
DANSHIRE ADMIRAL DOUT 138941769
GP-82 ++FG+ 5-09
4-00 2 305 16030 3.7 597 3.2 517
3-01 2 304 15300 3.4 518 2.9 442
5-03 2 305 14150 3.5 498 3.0 425

44 Wellwyn Eclips Belize-P *JERSEY*

Hannah R Bachman
439 Pushersiding Rd
Ulyssess, PA 16948

Born 3/23/2015 Reg. 119330601

• Fresh 3-2017, heifer calf sells as Lot 45

MAACK DAIRY ECLIPES-P-ET 114845461
CDCB GPTA 04/01/2017 12699DAUS 99%R -620M
0.21% 11F 8%ILE
0.07% -9P -61CM\$ -69NM\$ -91FM\$ -174GM\$
-0.9PL 2.0LIV -5.1DPR -3.6CCR 4.7HCR 3.24SCS
GPTAT 99%R 1.2 GJUI 13.9 GJPI 99%R -20

WELLWYN AJ BUGSY 118632942

FOREST GLEN AVERY ACTION-ET
111023978
GPTAT 99%R 1.2 GJUI 16.0 GJPI 99%R 19
MILLSTREAM HENERY ETTA BELLE-P
EX-90%
2-01 2 305 19920 5.0 996 3.5 689

STEINHAUERS IATOLA APPLEJACK
115488982
GPTAT 99%R 1.5 GJUI 14.7 GJPI 96%R 26
WELLWYN GOVERNOR BILLIE JO
117357585
GP-84%
1-11 2 263 11180 4.9 547 3.4 384
2-10 2 301 14530 4.6 674 3.7 531

45 Valentino Female Pending *JERSEY*

Hannah R Bachman
439 Pushersiding Rd
Ulyssess, PA 16948

Born 3/2017 Reg. Pending

ALL LYNNS LOUIE VALENTINO-ET
116279413
99%R 694M -0.06% 22F 52%ILE
-0.01% 24P 341CM\$ 335NM\$ 322FM\$ 208GM\$
6.2PL 3.0LIV -2.3DPR -2.8CCR 0.6HCR 3.00SCS
GPTAT 99%R 2.0 GJUI 18.2 GJPI 99%R 87

BHF-SSF PARADE LOUIE-ET 113486117
GPTAT 99%R 0.2 GJUI -6.4 GJPI 99%R -19
D&E PARAMOUNT VIOLET 67007718
EX-90%
5-02 3 305 27600 4.2 1167 3.5 953

WELLWYN ECLIPS BELIZE-P
119330601

• Sells as Lot 44

MAACK DAIRY ECLIPES-P-ET
114845461
GPTAT 99%R 1.2 GJUI 13.9 GJPI 99%R -20
WELLWYN AJ BUGSY 118632942

46 Country Ayre Koop Rita *JERSEY*

Jasmine Bond
8597 Balcom Cross Rd
South Dayton, NY 14138

Born 4/2/2014 Reg. 73394344

GP-83%

1-11 2 305 11480 4.4 509 3.5 405

• Due 4-19-17 to Tower Vue Prime
Tequila-ET

3rd Dam: Country Ayre Centurion Rae
(VG-87%)

4-05 3 301 18500 5.1 939 3.8 701

3-04 3 305 18960 4.7 887 3.7 705

4th Dam: Country Ayre Alf Norma Rae
(VG-86%)

4-07 2 19580 4.8 947 3.7 726

5th Dam: Country Ayre Merit Norma
(VG-87%)

4-00 2 302 18260 5.1 936 4.0 723

TOWER VUE KOOP 117646632
90%R -1433M 0.13% -44F 0%ILE
0.12% -30P -398CM\$ -409NM\$ -440FM\$ -430GM\$
-2.6PL -2.7LIV -2.9DPR -3.6CCR -0.9HCR 3.31SCS
GPTAT 86%R 1.3 GJUI 18.0 GJPI 82%R -116

TOWER VUE PRIME TEQUILA-ET
114816452
GPTAT 99%R 1.6 GJUI 23.9 GJPI 97%R -129
AVONLEA CONNECTED TO
KANADA-ET 115582202
EX-95%
5-00 2 305 21920 5.8 1262 4.0 878

COUNTRY AYRE HEADLINE RITZ
2861

GP-83%

4-02 3 305 19690 5.0 993 3.6 700

3-01 3 305 20580 4.5 917 3.6 747

5-04 3 219 18510 4.7 872 3.2 600

1-10 3 305 17980 4.4 783 3.2 571

SCHULTZ RESCUE HEADLINE
114114336
GPTAT 99%R 0.9 GJUI 9.1 GJPI 99%R 62
COUNTRY AYRE ROCKET RAMI
67034261
EX-90%
4-01 3 286 17520 6.3 1098 4.0 693
3-01 3 305 16220 5.4 879 4.1 658
5-00 3 305 11780 4.9 573 3.9 454

47 Harbro Maui Raelynn *JERSEY*

Jasmine Bond
8597 Balcom Cross Rd
South Dayton, NY 14138

Born 3/16/2016 Reg. 67107539

AHLEM VALENTINO MAUI 21838
68951472
95%R 348M -0.12% -7F 23%ILE
-0.04% 5P 177CM\$ 191NM\$ 221FM\$ 125GM\$
6.0PL 3.5LIV -0.4DPR -0.9CCR -0.3HCR 3.13SCS
GPTAT 89%R 2.2 GJUI 30.1 GJPI 88%R 46

ALL LYNNS LOUIE VALENTINO-ET
116279413
99%R 694M -0.06% 22F 52%ILE
GPTAT 99%R 2.0 GJUI 18.2 GJPI 99%R 87
AHLEM HEADLINE MAID 34174-ET
69041380
EX-90%
6-02 3 305 25410 4.5 1140 3.5 878

3rd Dam: Country Ayre Rocket Rami
(EX-90%)

4-01 3 286 17520 6.3 1098 4.0 693

4th Dam: Country Ayre Centurion Rae
(VG-87%)

4-05 3 301 18500 5.1 939 3.8 701

5th Dam: Country Ayre Alf Norma Rae
(VG-86%)

4-07 2 19580 4.8 947 3.7 726

6th Dam: Country Ayre Merit Norma
(VG-87%)

4-00 2 302 18260 5.1 936 4.0 723

COUNTRY AYRE KOOP RITA 73394344
GP-83%

1-11 2 305 11480 4.4 509 3.5 405

• Sells as Lot 46

TOWER VUE KOOP 117646632
GPTAT 86%R 1.3 GJUI 18.0 GJPI 82%R -116
COUNTRY AYRE HEADLINE RITZ 2861
GP-83%
4-02 3 305 19690 5.0 993 3.6 700
3-01 3 305 20580 4.5 917 3.6 747
5-04 3 219 18510 4.7 872 3.2 600
1-10 3 305 17980 4.4 783 3.2 571

48

Three-Miles Colton Demi *JERSEY*

Chase B Miles
111 Bordell Cross Rd
Smethport, PA 16749

Born 6/2/2016 Reg. 119812136

CHILLI ACTION COLTON-ET
66738335
97%R -984M 0.29% 9F 18%ILE
0.10% -17P 126CM\$ 109NM\$ 66FM\$ 126GM\$
2.0PL 3.1LIV 1.3DPR 1.6CCR 2.5HCR 3.11SCS
GPTAT 91%R 1.4 GJUI 23.6 GJPI 92%R 36

THREE-MILES TEQUILA DEE DEE
118642314
GP-82%

FOREST GLEN AVERY ACTION-ET
111023978
GPTAT 99%R 1.2 GJUI 16.0 GJPI 99%R 19
FAMILY HILL CONNECTION CHILLI-
ET 114535186
EX-91%
2-04 2 266 17560 7.6 1335 4.0 694

TOWER VUE PRIME TEQUILA-ET
114816452
GPTAT 99%R 1.6 GJUI 23.9 GJPI 97%R -129
CBM JACE DROPPY 115550281
EX-90%

3rd Dam: CBM Parade Drop
(VG-87)

49

Roll-N-View Doorman Janelle

Tracey A. Coyle
3351 Butter Creek Rd
Genesee, PA 16923
814/698-2468

Born 3/13/2015 Reg. 840 3124680372 99%RHA

• Sells Fresh

3rd Dam: Bakeracre Paramount Jill
(VG-85-4Y CAN 2*)

7-06 2 329 21676 3.8 816 3.0 659

4th Dam: Bakerholm Martie Jill
(VG-85-3Y CAN)

4-08 2 365 17346 3.6 617 3.7 637

5th Dam: Bakerholm Admiral Jean
(VG-86-3Y)

5-06 2 365 23708 3.8 899

LIFE 6 Lact. 118341 3.8 4455

6th Dam: Bakerholm Apex Jenny
(VG-85-7Y CAN 2*)

VAL-BISSON DOORMAN 107281711C
TV TL TY TD 99%RHA
VG-87-CAN 50K GTPI +2361
PTA +43M +42F +26P 99%R 4/2017
PTA +395NM +.15%F +.09%P 26%US
PTA +2.7PL 2.56SCS -.9DPR 5.8%DCE
PTA +3.59T +2.57UDC +2.13FLC 98%R 4/2017

O-C-E-C LINJ JACKIE-ET 72193309

DE-SU BOOKEM-ET 66636657 99%RHA
TR TV TL TY TD
VG-88 EV+V 6-07 GM GTPI +2341
PTA +1269M +30F +48P 99%R 4/2017
VAL-BISSON SHOTTLE IMELDA-ET
106173432C
EX-94 EEEEE 7-02
4-03 2 365 40505 3.8 1550 3.6 1455
1-11 2 365 25531 4.2 1076 3.7 957

SUNNYLODGE LINJET 5578386C TV TL
EX CAN GTPI +1292
BAKERACRE SKYCHIEF JACKLYN
6819231C
EX CAN
3-04 2 365 25562 3.5 897 3.2 816
2-05 2 324 21314 3.7 787 3.0 633

50

Ger-Wood Defiant Chaz *MALE*

Dwi-Bet Farms
3243 Mose Rd
Addison, NY 14801
607/426-0989

Born 3/10/2016 Reg. 840 3135444017 100%RHA

3rd Dam: Kan-B-Done Fotune Cricket
(VG-85 VG-MS, 2y)

3-01 2 305 19740 4.0 791 3.9 761

4th Dam: Kan-B-Done Lheros Carlene
(VG-85)

3-07 2 240 19430 3.4 655 3.0 586

5th Dam: Kan-B-Done Eland Creampuff
(EX-90 EX-MS)

7-08 2 305 28580 3.6 1032 3.2 914

LIFE 2070 167860 3.8 6357 3.2 5454

6th Dam: Kan-B-Done Durham Cream-Tw
(GP-83)

5-01 2 305 27100 3.8 1038 3.4 917

7th Dam: Will-Tri Stardust Casper
(VG-87 VVVVVV)

6-02 2 305 30480 4.0 1205 3.0 926

LIFE 2132 164510 4.0 6513 3.2 5237

SCIENTIFIC B DEFIANT-ET 141123484
RC TL TV TY TD
VG-87 EVV+ 4-08 GTPI +1768
PTA +435M -28F +3P 98%R 4/2017
PTA -124NM -.16%F -.04%P 84%US
PTA -.9PL 3.13SCS -2.0DPR 6.0%DCE
PTA +3.60T +2.64UDC +2.26FLC 97%R 4/2017

KAN-B-DONE GOLDSUN CLAIRE
142507308

REGANCREST S BRAXTON-ET 61898423
TR TV TL TY TD
EX-95 EEEV 5-09 GTPI +1449
SCIENTIFIC GOLD DIOR RAE-ET
138328405 RC CV
EX-92 EEEEE DOM 4-03
4-02 2 365 31910 4.7 1495 3.4 1099
2-02 2 365 31900 4.7 1484 3.7 1172

TOC-FARM GOLDSUN-ET
53990032335ITA
GTPI +1514
PTA +1.82T +2.41UDC +.41FLC 99%R 4/2017
KAN-B-DONE SANCHEZ CRYSTAL
141068693
VG-88 EVVVE 3-06



HOLSTEIN ASSOCIATION TERMS AND CONDITIONS FOR PUBLIC SALES

EFFECTIVE MARCH 2, 1996 - Amended October 1, 1997, June 28, 2000, June 23, 2002, March 26, 2010 and March 24, 2016

TERMS: The terms of the sale are cash unless arrangements are made prior to the sale or are printed in the sale catalog. Only when the above conditions are met will the buyer be entitled to the warranties listed below. In no case will animals be released unless settlement is made with the clerk of the sale.

RESPONSIBILITY: The seller, buyer, and manager of this sale are obligated to comply with the provisions of these terms and conditions.

EXPORT SALES: Buyer assumes all responsibility for health tests required by the importing country.

BIDS: The highest bidder is the buyer. Bidding parties or their agents are responsible for all bids placed. Every animal or lot presented for bidding is pledged to absolute sale. In case of dispute, the animal or lot will again be put up for advance bids, and if there is no advance bid, the animal or lot will be sold to the person the auctioneer accepted the last bid from. In case two or more claim the bid, the auctioneer will indicate the party whose bid he recognized. Other claimants will be given an opportunity to increase the bid and bidding will be restricted to the two or more claimants.

BY-BIDDING: Bidding directly or indirectly by the sole owner of any animal or lot is prohibited unless the intention to bid is disclosed specific to each animal in the catalog and announced when the animal enters the ring. Bidding by any member of a partnership, syndicate, or other entity having an ownership interest in an animal or lot is permitted.

TRANSFER OF OWNERSHIP: For all Registered HolsteinsSM, the transfer of ownership to the buyer will be recorded on the records of Holstein Association USA and a certificate of registration showing that transfer of ownership will be provided to the buyer free of charge. For embryos, the transfer of ownership to the buyer will be recorded on the records of Holstein Association USA free of charge to the buyer.

RISK: All animals located at sale site are at the purchaser's risk as soon as struck off, but will be cared for free of charge for a maximum of 24 hours following the end of the sale.

WARRANTIES:

- 1) Each consignor warrants clear title to the animal or lot, and the right to sell same.
- 2) To the best of the seller's knowledge, each animal is sound and healthy in every respect and embryos have been recovered, processed, frozen, transferred and graded in keeping with IETS recommendations unless otherwise noted in the catalog or announced from the auction stand. Every precaution will be taken to represent the physical condition of each lot exactly as is known. Examination of all purchases should be made immediately after the purchase and before the close of the sale, and if found not to be as represented, complaint must be reported to the sale management before the close of the sale. In the event no complaint is filed, it is understood that the buyer assumes full ownership in the case of animals at sale site together with all risks, after which no representations of the seller can be challenged through the sale management. Heifers that never calved are in no way guaranteed as to the condition of their udders following calving. The sex of an embryo or fetus is in no way guaranteed.

3) Breeding Warranty

The seller guarantees all animals to be breeders, but not beyond the purchase price, with the following understanding:

- a. Males - Should any bull after reaching the age of fourteen months fail to prove a breeder after being used for two months on cows or heifers known to be breeders, the matter shall be reported in writing to the seller within three months of the sale date. The report must include the animal's examination record, a written statement of treatment, and a statement of the animals' inability to breed,

by a licensed veterinarian. The seller has the option to refund the purchase price or make other settlement that is satisfactory to the buyer. In either case the rights of ownership of the animal return to the seller. The seller makes no guarantees with respect to the ability to freeze semen.

- b. Females - All females are guaranteed to be breeders with the exception of:
 1. Cows over 7 years of age when sold;
 2. Cows and/or heifers carrying a pregnancy that is the result of an embryo transfer.

Report of a non-breeder must occur in writing within 3 months of the date of sale or before the animal reaches 21 months of age and must be submitted to the seller. The report must include the animal's examination record, a written statement of treatment, and a statement of the animals' inability to breed, by a licensed veterinarian. The seller has the option to refund the purchase price or make other settlement that is satisfactory to the buyer. In either case the rights of ownership of the animal return to the seller.

Females bred when sold and pronounced in calf are presumed to be pregnant but pregnancy is not guaranteed unless so announced. The seller makes no warranty that pregnant cows will deliver calves or that they will carry calves full term.

- c. If, after the sale, embryos or oocytes are recovered from a female or an attempt is made to superovulate her, this negates the breeding warranty unless there is a separate written agreement between buyer and seller.

SHIPPING: Assistance will be given in arranging shipping of the animals after the sale. All costs, risks and responsibility will be borne by the purchaser.

PEDIGREE INFORMATION: All production, classification, type and production summaries are current. Only information recorded on Holstein Association USA pedigrees is used. Any production or classification records supplied by the seller or consignor will be properly identified as provided by owner. Records in progress are identified as such.

GENOMIC INFORMATION: If genomic information on the animal or embryo is available, it must be dated and disclosed at or before the time of sale.

EMBRYO TRANSFER: All registered animals that have resulted from embryo transfer are identified with one of the following suffixes in the name: ET, ETS (from split embryo), or ETN (from nuclear transfer). If unregistered, the appropriate technology will be identified. Donor dams are identified.

HEALTH WARRANTY: The seller will provide an official health certificate to the buyer for each animal showing the results of all health tests made in preparation for this sale as required by the state where the cattle reside. Other health tests completed for this sale will be disclosed.

ERRORS: The material in this catalog has been carefully edited. If any errors or omissions are discovered, they will be announced. Such announcements take precedence over that printed in this catalog.

ACCIDENT: The sale management, the consignors, and the owner of the grounds will not be responsible in any case for the condition of the grounds or the behavior of the animals and disclaim any liability in the event of personal accident or property loss.

LIMITATIONS OF WARRANTIES: Warranties contained herein, unless terminated earlier, will cease upon the resale of an animal.

- Index -

Consignor.....	Lot #
AOT Genetics	4, 5
Bachman, Hannah	44, 45
Bachman, Philip	7, 7A
Bennett, Peggy	25
Bond, Jasmine.....	46, 47
Bush, Scott & Lisa.....	26, 27, 28, 29
Coyle, Tracey A.....	49
Coyne Farms, Inc. & John Barrett	18
Dwi-Bet Farms.....	50
Geiser, Jacob	31
George, Carl & Barbara.....	30, 32
Hinz, Bruce	14
Hinz, Justin	9, 11
Jenkins, James.....	33, 34
Lamb, Jonathan & Alicia	2
Lamb, Matthew & Jonathan	3
Lampson, Emily	22
Midas Touch Genetics	6, 8, 10
Mikel, Emily	13
Miles, Chase & Bethany.....	35, 36, 37, 38
Miles, Chase	48
Nathaniel Faus	15, 20, 21
Rollen N's Dairy	19, 23
Roll-N-View	12, 16, 17, 24
Tice, Daniel & Shirley.....	39
Tice, Leon & Cathy	40, 42, 43
Tice, Leon	41
Winnie, B&M & C&A Galton	1



*For your grain, corn silage, soybean, wheat,
and alfalfa seed needs, we're here to be
your most profitable relationship.*

For more information and dealer locations near you, please contact the
District Manager for western NY:



Kent Williams
717-327-8095



kent.williams@hubnerseed.com

SHUR-GAIN

Attention Farmers

Call Us Today for Your
Customized Feeding Solutions

*"Helping You Get More
Milk for Your Money"*

**3422 Dutch Hollow Rd.
Strykersville, NY 14145
585-457-9471**

ADM

Sweet Unique

Cell Feed

An alternative
to traditional
sweet feed!

Minimizes
respiration with
beta-carotene
and yeast culture

Sweet feed
replaces the
corn and sugar
which longer

Doesn't dry
out or break
the traditional
sweet feed

See how Sweet Unique works for your farm. Visit www.adm.com/ADM/SweetUnique today.

Your equipment solution.

Sales. Parts. Service. All in one place.

- Diverse product offering from Case IH, Claas, Kuhn Krause and more
- Extensive parts network and expert service support
- Best-in-class precision farming specialists
- Support for all makes and models



Contact us at one of our eight agriculture locations:

Adams Center, Jim Munroe 800-962-4686

Albany, Josh Clark 800-926-4227

Auburn, Mark Bailey 800-362-4686

Batavia, Thomas Lewis 800-388-4113

Binghamton, Chuck Miller 607-754-6570

Canandaigua, John Poppoon 800-388-6111

Elmira, Ed Bigelow 607-739--8741

Hornell, Kris Bower 607-324-2110



MONROE TRACTOR

we keep you working

monroetractor.com